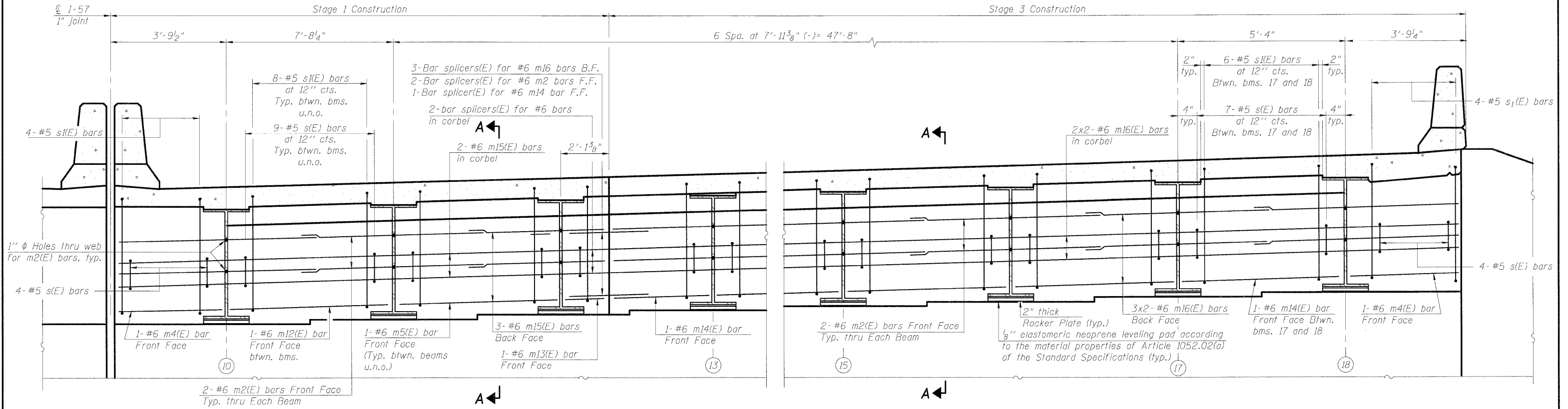


STATE OF ILLINOIS
DEPARTMENT OF TRANSPORTATION

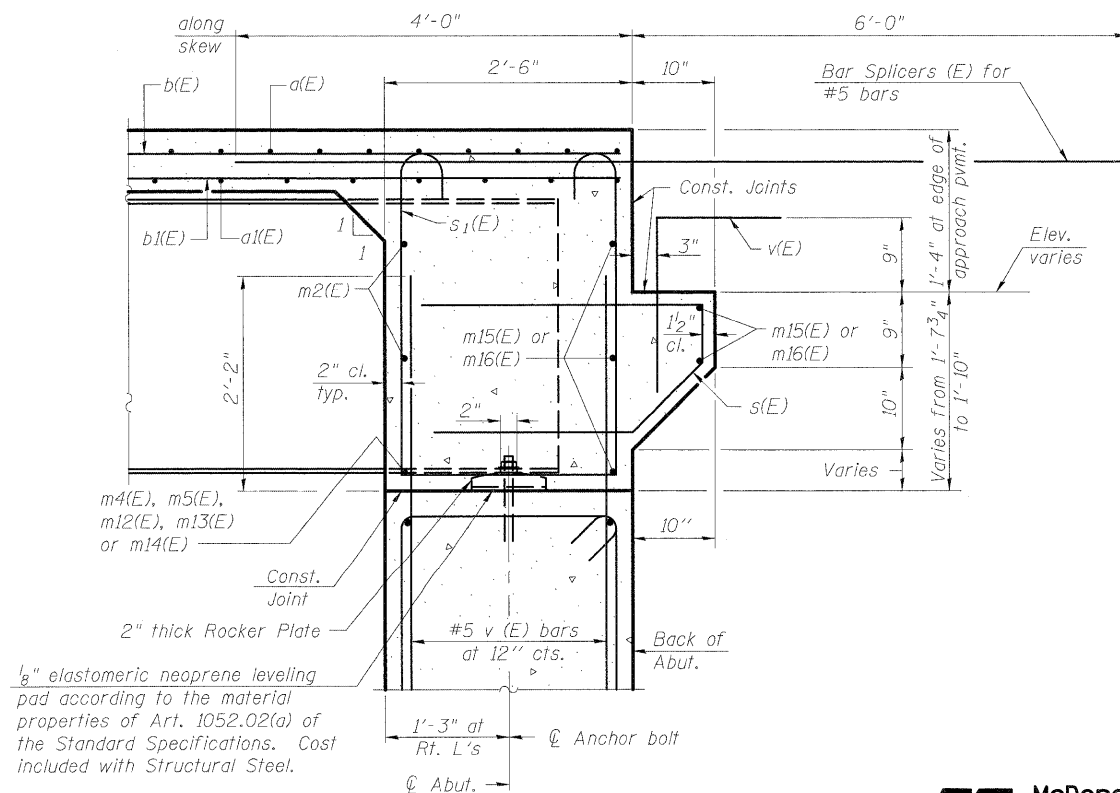


DIAPHRAGM ELEVATION AT WEST ABUTMENT (NB)

Looking West

MIN. BAR LAP

#6 bar = 3'-4"



SECTION A-A

Dimensions at right angles to abutment, except as shown.

Notes:
 Reinforcement bars in diaphragm are billed with superstructure on sheet SH-22.
 Concrete in diaphragm is included with Concrete Superstructure on sheet SH-22.
 For details of bars s(E) & s1(E) see sheet SH-22.
 The s(E) and s1(E) bars shall be placed parallel to the beams. Spacing for these bars shall be at right angles to the beams.

DESIGNED	AWW
CHECKED	PMH
DRAWN	AMV
CHECKED	AWW



McDonough Associates Inc.
 Engineers / Architects
 130 East Randolph Street
 Chicago, Illinois 60601
 (312) 946-8600

SHEET NO. SH-27 SHEETS SH-56	F.A.I. RTE.	SECTION	COUNTY	TOTAL SHEETS	SHEET NO.
	57	(46-2) HBR	KANKAKEE	558	298
CONTRACT NO. 66409					
FED. ROAD DIST. NO. 3 ILLINOIS FED. AID PROJECT					