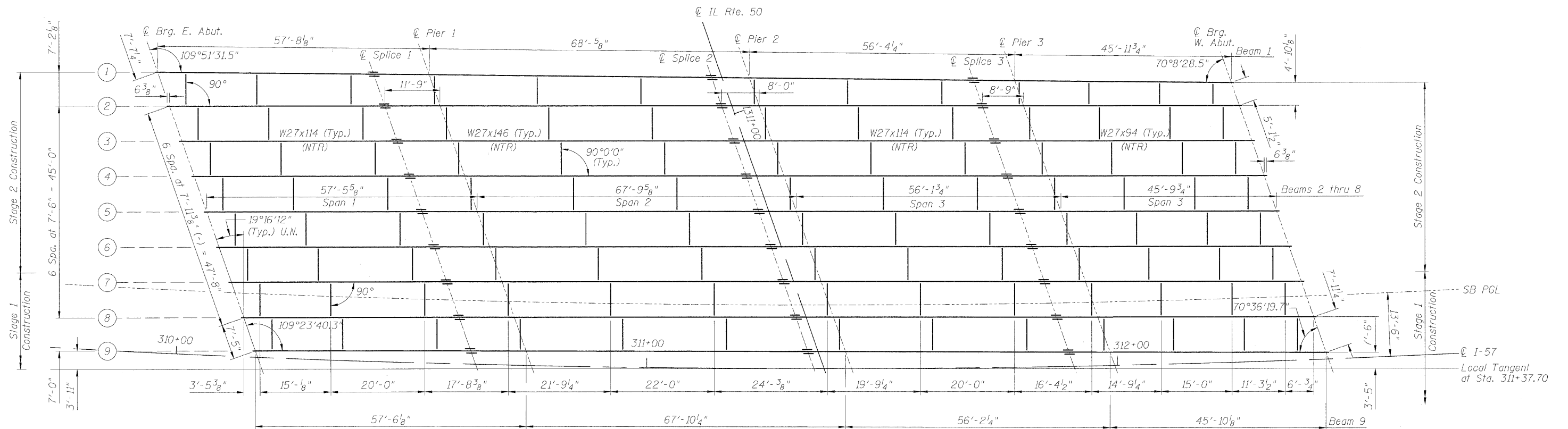


STATE OF ILLINOIS
DEPARTMENT OF TRANSPORTATION



FRAMING PLAN

(SB Bridge)

NTR denotes notch toughness requirements
See note sheet no. SH-35.
For notes see sheet no. SH-2.

*All cross frames or diaphragms shall be installed as steel is erected and secured with erection pins and bolts except as otherwise noted. Individual cross frames or diaphragms at supports may be temporarily disconnected to install bearing anchor rods.

**All structural steel shall be AASHTO M270 Grade 50 except diaphragms.

DESIGNED	PMH
CHECKED	MGB
DRAWN	PMH
CHECKED	BB



McDonough Associates Inc.
Engineers / Architects
130 East Randolph Street
Chicago, Illinois 60601
(312) 946-8600

SHEET NO. SH-32 SHEETS SH-56	F.A.I. RTE.	SECTION	COUNTY	TOTAL SHEETS	SHEET NO.
	57	(46-2) HBR	KANKAKEE	558	303
CONTRACT NO. 66409					
FED. ROAD DIST. NO. 3 ILLINOIS FED. AID PROJECT					

SB FRAMING PLAN
STRUCTURE NO. 046-0144 (S.B.)
& STRUCTURE NO. 046-0145 (N.B.)