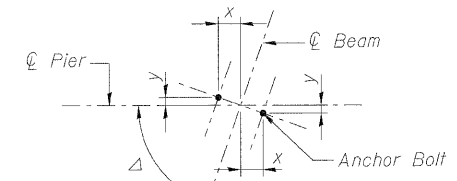
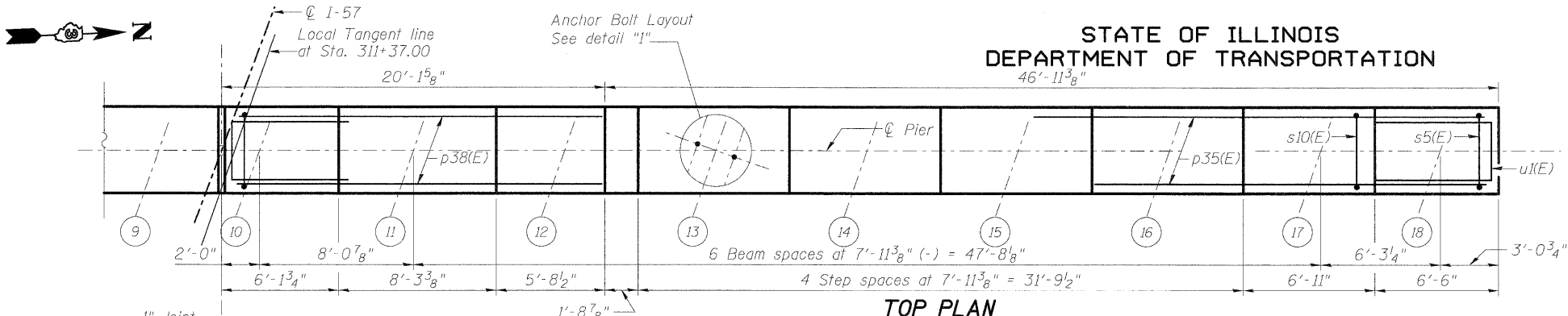


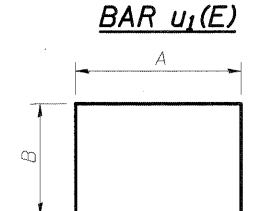
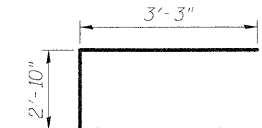
STATE OF ILLINOIS  
DEPARTMENT OF TRANSPORTATION

PIER 1 BILL OF MATERIAL



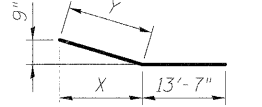
Beam No.	Δ	x	y
10	70°36'19.7"	11 1/2"	4 1/8"
11 thru 17	70°43'48"	11 3/8"	4"
18	70°1'55.6"	11 1/2"	4 1/8"

DETAIL "1"  
ANCHOR BOLT LAYOUT



A & B DIMENSIONS

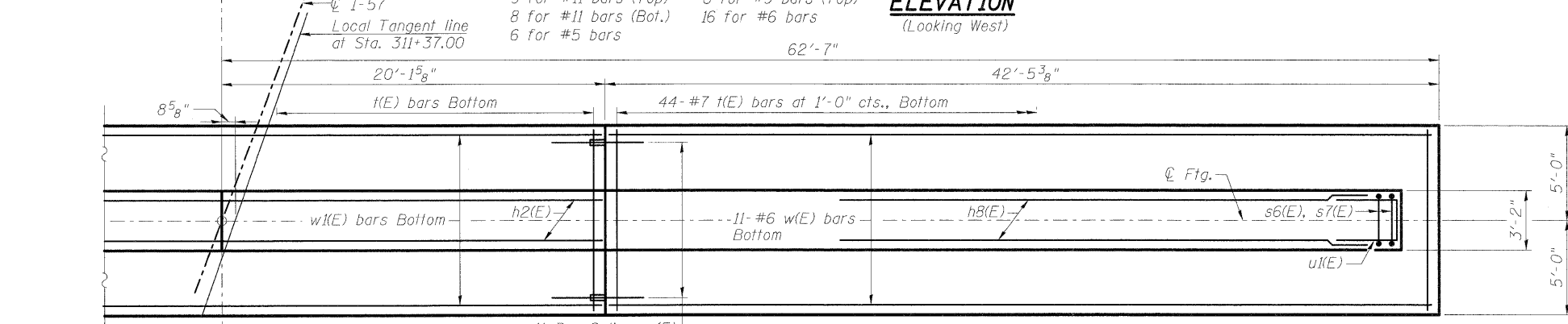
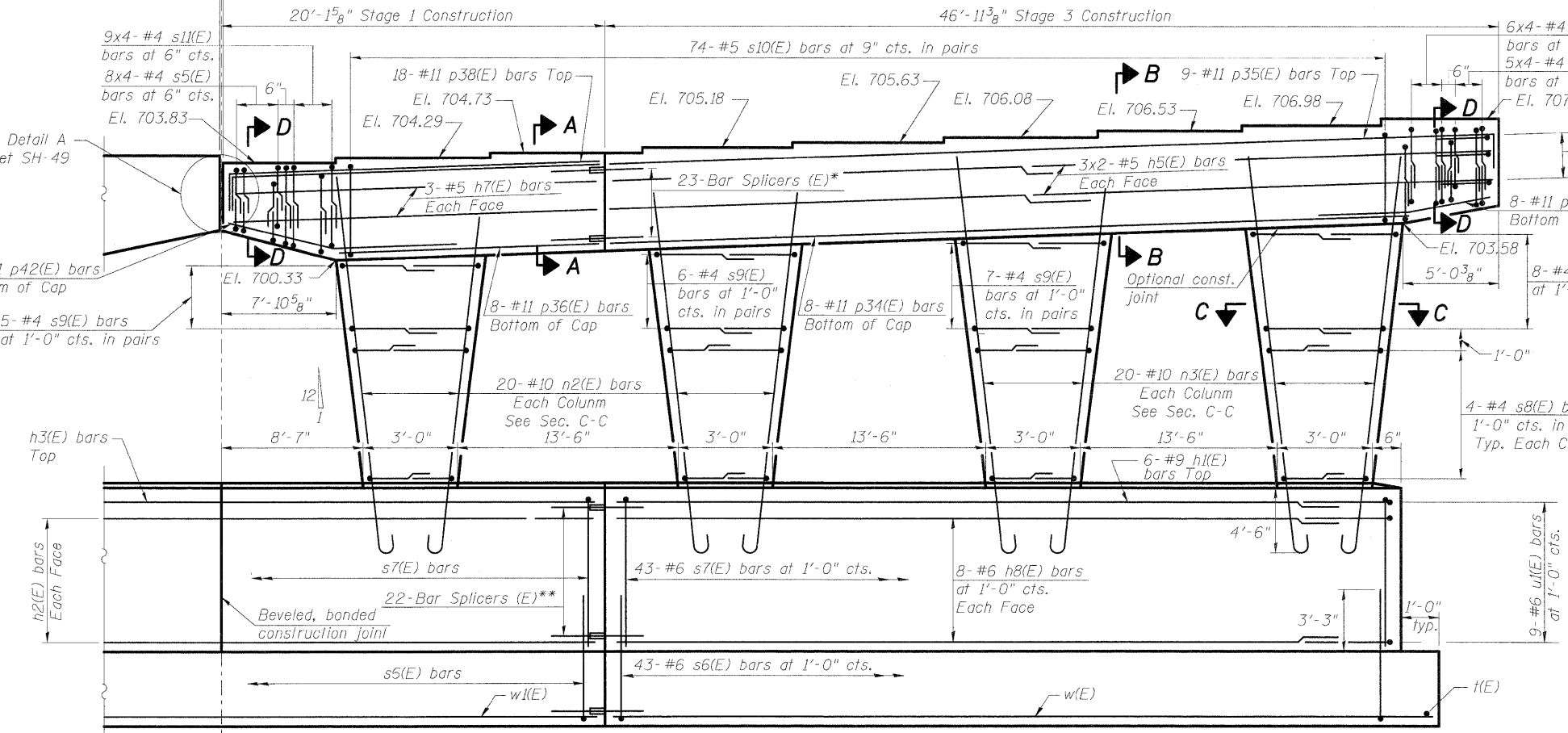
Bar	A	B
s5(E)	2'-10"	2'-5"
s6(E)	2'-10"	5'-0"
s7(E)	2'-10"	7'-2"
s8(E)	2'-6"	2'-8"
s9(E)	2'-6"	3'-4"
s11(E)	2'-10"	2'-8"
s12(E)	2'-10"	3'-0"



X & Y DIMENSIONS

Bar	X	Y
p39(E)	6'-0 1/2"	6'-1"
p40(E)	4'-10 1/4"	4'-11"
p41(E)	8'-4 3/8"	8'-5"
p42(E)	7'-7 1/2"	7'-8"

Bar	Stage 1 No.	Stage 2 No.	Stage 3 No.	Size	Length	Shape
h1(E)		6	6	#9	41'-1"	—
h2(E)	16			#6	40'-9"	—
h3(E)	6			#9	40'-9"	—
h4(E)		12		#5	25'-5"	—
h5(E)			12	#5	25'-1"	—
h6(E)	6			#5	20'-7"	—
h7(E)	6			#5	19'-10"	—
h8(E)		16	16	#6	41'-1"	—
n(E)		40		#10	14'-10"	U
n1(E)	20	20		#10	17'-1"	U
n2(E)	20		20	#10	17'-8"	U
n3(E)			40	#10	19'-0"	U
p32(E)		8		#11	41'-3"	—
p33(E)		9		#11	49'-4"	—
p34(E)			8	#11	41'-9"	—
p35(E)			9	#11	48'-8"	—
p36(E)	16			#11	12'-1"	—
p37(E)	18			#11	22'-7"	—
p38(E)	18			#11	21'-9"	—
p39(E)		8		#11	19'-8"	—
p40(E)			8	#11	18'-6"	—
p41(E)	8			#11	22'-0"	—
p42(E)	8			#11	21'-3"	—
s5(E)	32	28		#4	7'-8"	□
s6(E)	42	43	43	#6	12'-10"	□
s7(E)	42	43	43	#6	17'-2"	□
s8(E)	16	24	24	#4	7'-10"	□
s9(E)	20	24	42	#4	9'-2"	□
s10(E)	68	112	114	#5	10'-7"	□
s11(E)	36	28	20	#4	8'-2"	□
s12(E)	72		24	#4	8'-10"	□
t(E)	42	44	44	#7	9'-8"	—
u1(E)	6	12	12	#6	9'-4"	—
w(E)		11	11	#6	42'-1"	—
w1(E)	11			#7	40'-9"	—
				Braced Excavation	Cu. Yd.	1,140
				Reinforcement Bars, Epoxy Coated	Pound	51,600
				Concrete Structures	Cu. Yd.	292



DESIGNED	PMH
CHECKED	MGB
DRAWN	PMH
CHECKED	MJL

FOOTING PLAN  
Maximum Applied Service Bearing Pressure = 3.71 ksf

Notes:  
Space reinforcement in cap to miss anchor bolts.  
Pour steps monolithically with cap.  
For Sections A-A, B-B, C-C and D-D and End View see Sheet SH-43.

McDonough Associates Inc.  
Engineers / Architects  
130 East Randolph Street  
Chicago, Illinois 60601  
(312) 946-8600

SHEET NO. SH-44 SHEETS SH-56	F.A.I. R.T.E.	SECTION	COUNTY	TOTAL SHEETS	SHEET NO.
	57	(46-2) HBR	KANKAKEE	558	315
CONTRACT NO. 66409					
FED. ROAD DIST. NO. 3 ILLINOIS FED. AID PROJECT					

PIER 1 (NB)  
STRUCTURE NO. 046-0144 (S.B.)  
& STRUCTURE NO. 046-0145 (N.B.)

C DIMENSIONS

Bar	C
n(E)	13'-5"
n1(E)	15'-8"
n2(E)	16'-3"
n3(E)	17'-7"