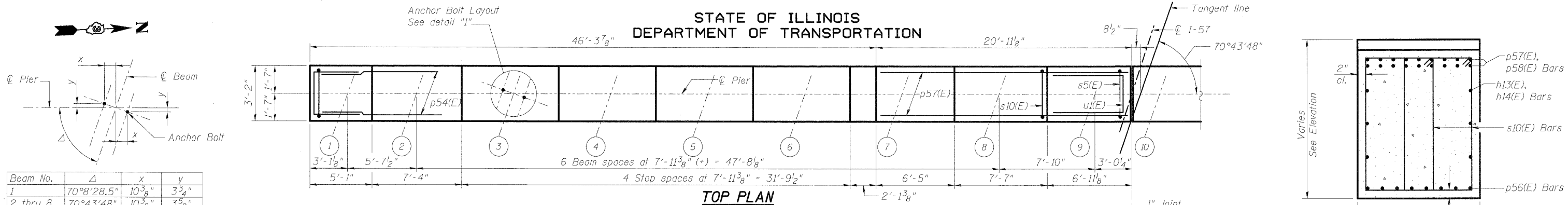
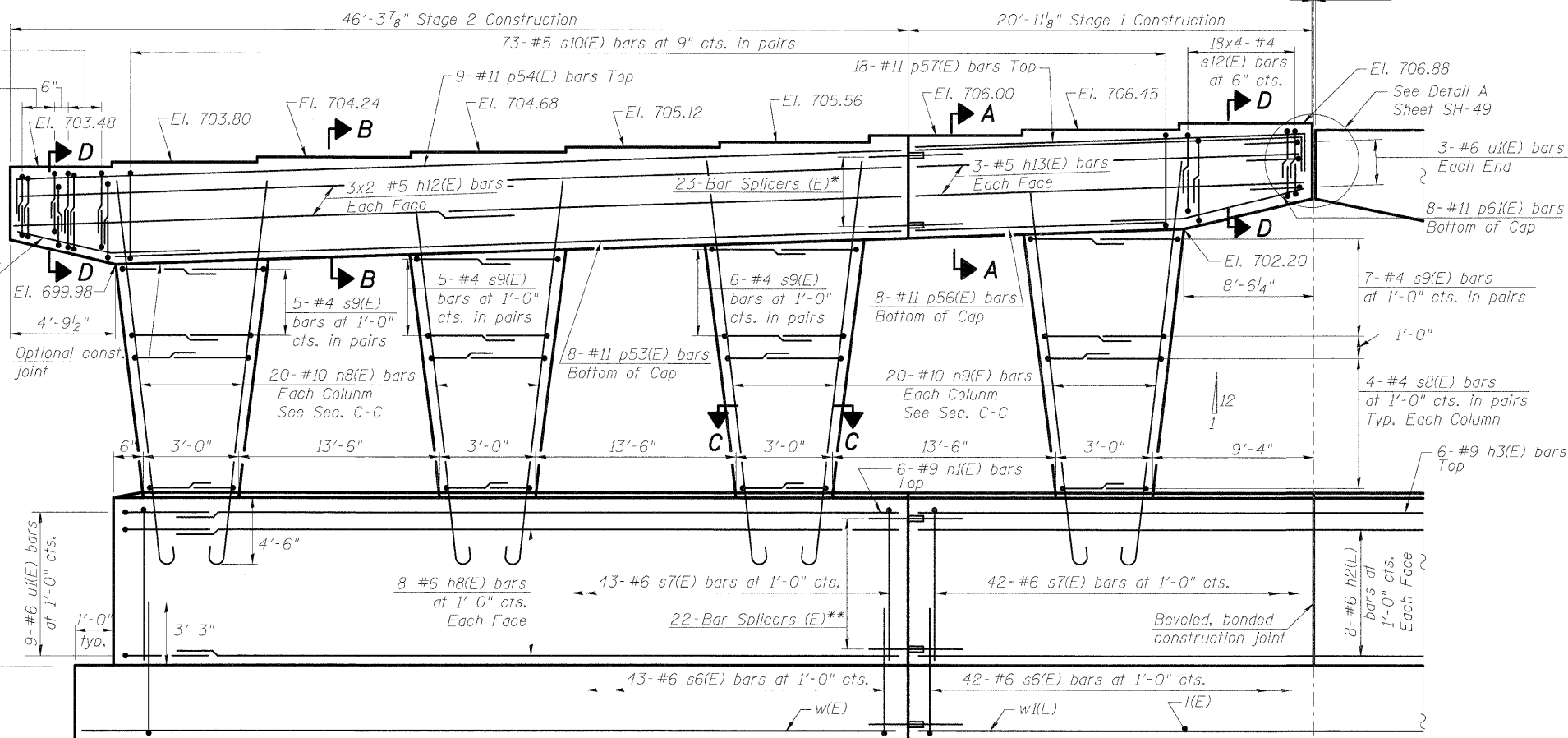
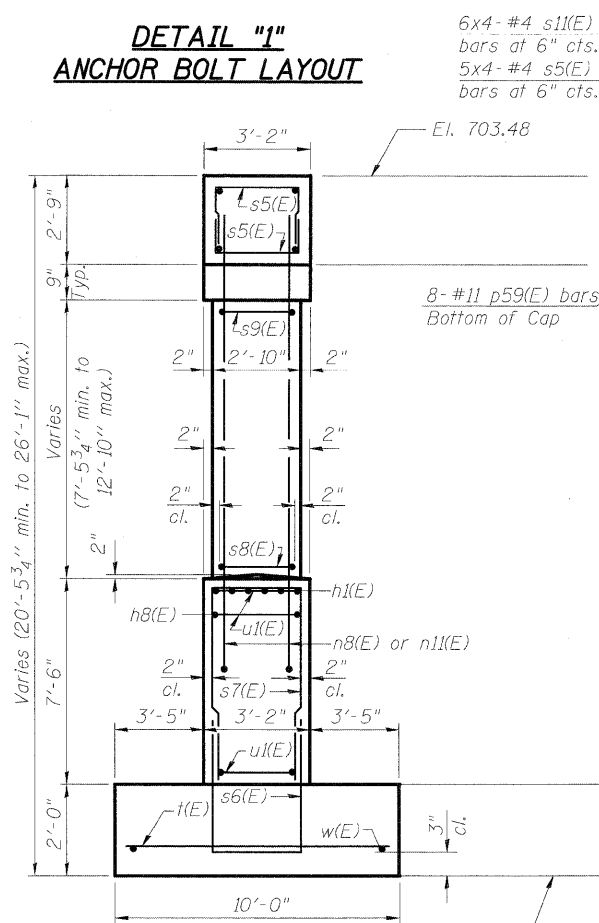


STATE OF ILLINOIS
DEPARTMENT OF TRANSPORTATION



DETAIL "1"
ANCHOR BOLT LAYOUT

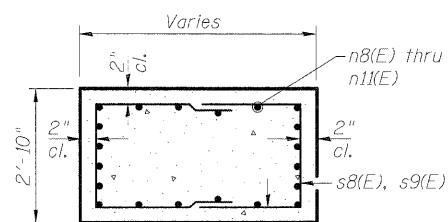


ELEVATION
(Looking West)

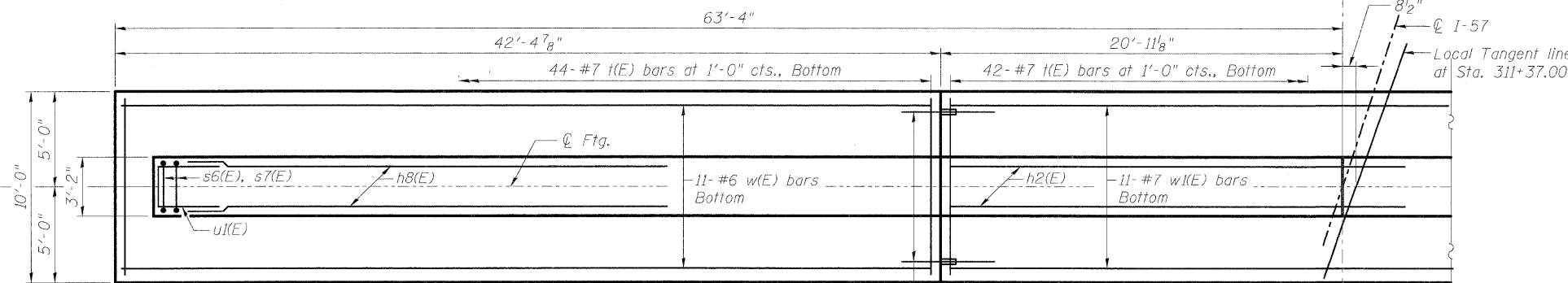
*9 for #11 bars (Top)
8 for #11 bars (Bot.)
6 for #5 bars

**6 for #9 bars (Top)
16 for #6 bars

END VIEW



SECTION C-C



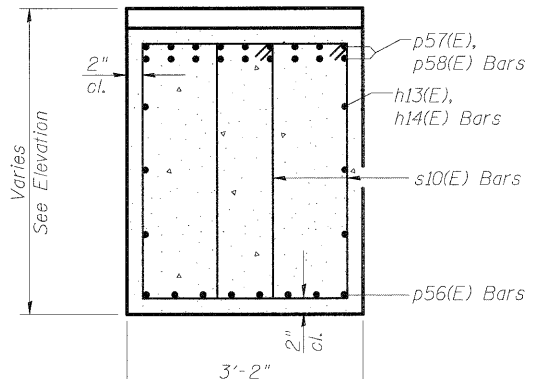
FOOTING PLAN

Maximum Applied Service Bearing Pressure = 3.71 ksf

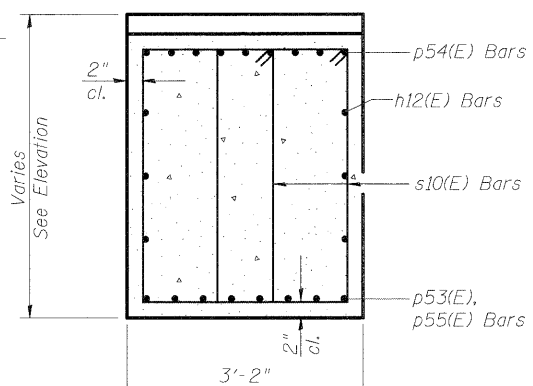
MINIMUM BAR LAP

Top bars (Pier)
#5 bar = 2'-11"

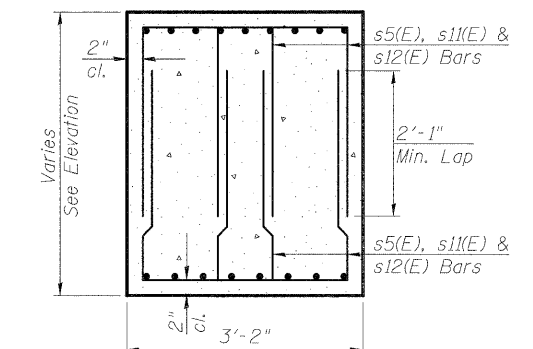
Other bars
#4 bar = 2'-1"
#6 bar = 3'-1"



SECTION A-A



SECTION B-B



SECTION D-D
Typ. Each End

Notes:
Space reinforcement in cap to miss anchor bolts.
Pour steps monolithically with cap.
For Bill of Material, see Sheet SH-48.

PIER 3 (SB)
STRUCTURE NO. 046-0144 (S.B.)
& STRUCTURE NO. 046-0145 (N.B.)

DESIGNED	PMH
CHECKED	MGB
DRAWN	PMH
CHECKED	MJL

McDonough Associates Inc.
Engineers / Architects
130 East Randolph Street
Chicago, Illinois 60601
(312) 946-8600

SHEET NO. SH-47 SHEETS SH-56	F.A.I. RTE.	SECTION	COUNTY	TOTAL SHEETS	SHEET NO.
	57	(46-2) HBR	KANKAKEE	558	318
CONTRACT NO. 66409					
FED. ROAD DIST. NO. 3 ILLINOIS FED. AID PROJECT					