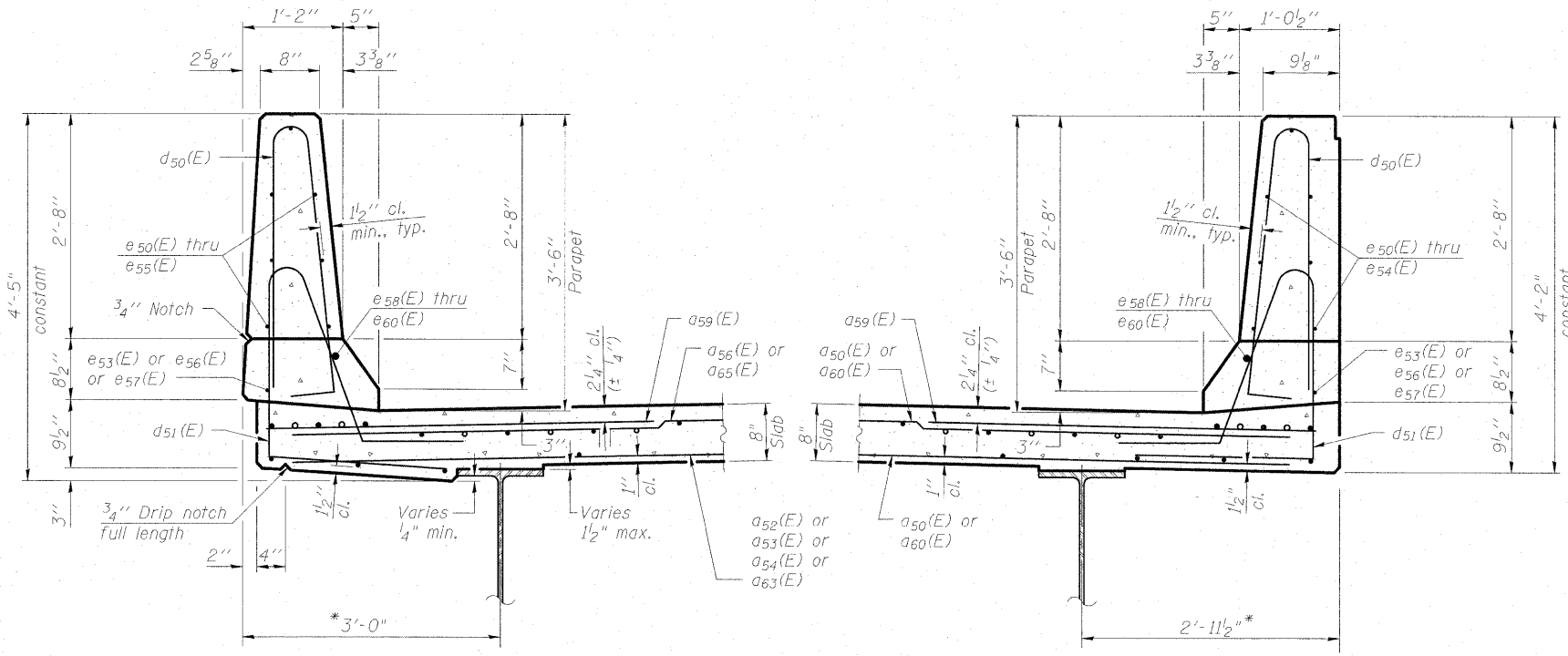


STATE OF ILLINOIS
DEPARTMENT OF TRANSPORTATION



SECTION THRU OUTSIDE PARAPET

*Measured perpendicular to edge of deck

SECTION THRU MEDIAN PARAPET

*Measured perpendicular to edge of deck

SUPERSTRUCTURE BILL OF MATERIAL

Bar	Stage 1		Stage 2		Stage 3		Size	Length	Shape
	S.B. No.	N.B. No.	S.B. No.	N.B. No.	S.B. No.	N.B. No.			
a50(E)		546					#5	20'-1"	—
a51(E)				229			#5	31'-1"	—
a52(E)			1	80			#5	28'-1"	—
a53(E)				74			#5	27'-0"	—
a54(E)			5	75			#5	25'-11"	—
a55(E)				317			#5	27'-3"	—
a56(E)			1	111			#5	32'-6"	—
a57(E)				102			#5	31'-5"	—
a58(E)			7	104			#5	30'-4"	—
a59(E)	155	155	155	155			#6	6'-6"	—
a60(E)	546						#5	19'-7"	—
a61(E)				229			#5	22'-0"	—
a62(E)				546			#5	25'-9"	—
a63(E)				111			#5	45'-10"	—
a64(E)				317			#5	18'-4"	—
a65(E)				154			#5	53'-9"	—
a66(E)				1			#5	18'-9"	—
a67(E)				1			#5	23'-0"	—
a68(E)				16	16		#5	1'-6"	—
b50(E)		38		104			#5	17'-4"	—
b51(E)	95	95	325	260			#5	30'-11"	—
b52(E)		132		354			#5	31'-2"	—
b53(E)	40	42	132	112			#6	39'-0"	—
b54(E)	38		130				#5	17'-11"	—
b55(E)	132		426				#5	31'-4"	—
d50(E)	186	186	187	186			#5	6'-10"	RP
d51(E)				187			#5	7'-8"	RP
d52(E)	186	186					#5	7'-8"	RP

See cutting diagram

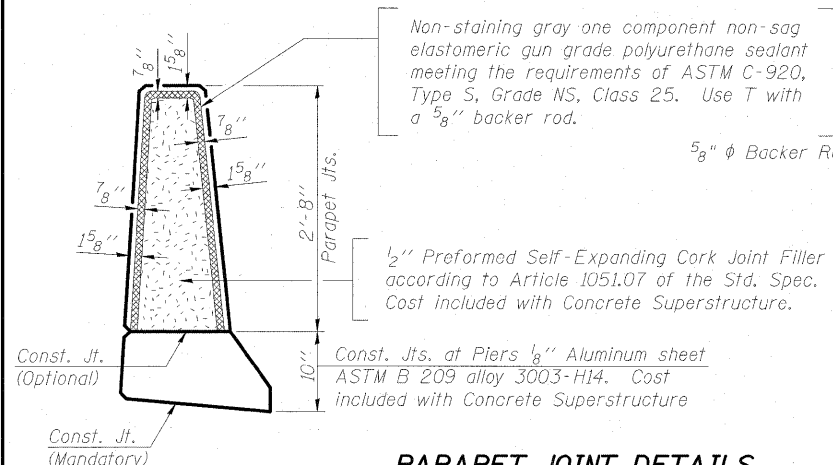
Bars indicated thus 19x5-#5 etc. indicates 19 line of bars with 5 lengths per line.

SUPERSTRUCTURE BILL OF MATERIAL (cont.)

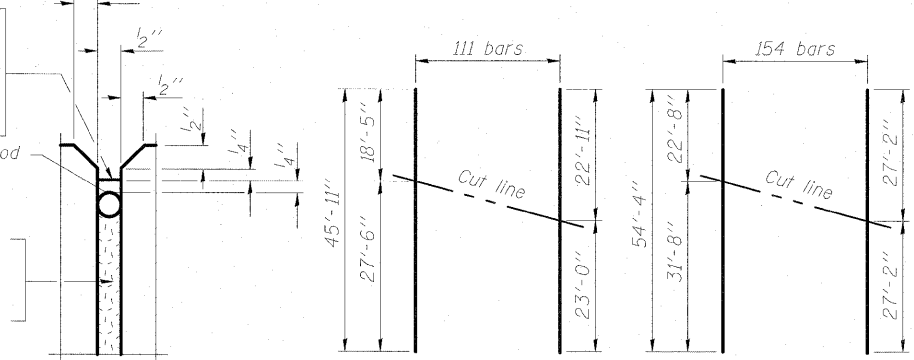
Bar	Stage 1		Stage 2		Stage 3		Size	Length	Shape
	S.B. No.	N.B. No.	S.B. No.	N.B. No.	S.B. No.	N.B. No.			
e50(E)	3	3	3	3			#4	14'-3"	—
e51(E)	3	3	3	3			#4	13'-11"	—
e52(E)	36	36	36	36			#4	14'-1"	—
e53(E)	32	32	32	32			#4	7'-8"	—
e54(E)	21	21		21			#4	16'-9"	—
e55(E)				21			#4	16'-11"	—
e56(E)	4	4	4	4			#4	22'-8"	—
e57(E)	2	2	2	2			#4	26'-9"	—
e58(E)	4	4	4	4			#8	24'-3"	—
e59(E)	4	4	4	4			#8	7'-8"	—
e60(E)	2	2	2	2			#8	28'-4"	—
m50(E)		10					#6	20'-2"	—
m51(E)				20			#6	30'-1"	—
m52(E)		12	18	28			#6	11'-3"	—
m53(E)		4	3	10			#6	7'-6"	—
m54(E)	2	2	2	2			#6	2'-7"	—
m55(E)		2					#6	1'-6"	—
m56(E)				2			#6	5'-8"	—
m57(E)				1			#6	8'-3"	—
m58(E)				1			#6	5'-0"	—
m59(E)	10						#6	19'-8"	—
m60(E)			10				#6	36'-5"	—
m61(E)			10				#6	32'-0"	—
m62(E)	12						#6	9'-1"	—
m63(E)			18				#6	10'-1"	—
m64(E)	4		10				#6	7'-2"	—
m65(E)	2						#6	1'-8"	—
m66(E)			2				#6	5'-2"	—
m67(E)			3				#6	4'-6"	—
v50(E)	22	22	32	21			#5	6'-10"	U
v51(E)	38	38	122	99			#5	8'-8"	U
v52(E)	20	20	105	92			#5	5'-9"	U
v50(E)	22	22	43	35			#5	3'-7"	Γ
v52(E)	16	16	86	74			#5	4'-1"	Γ

Reinforcement Bars, Epoxy Coated
Concrete Superstructure

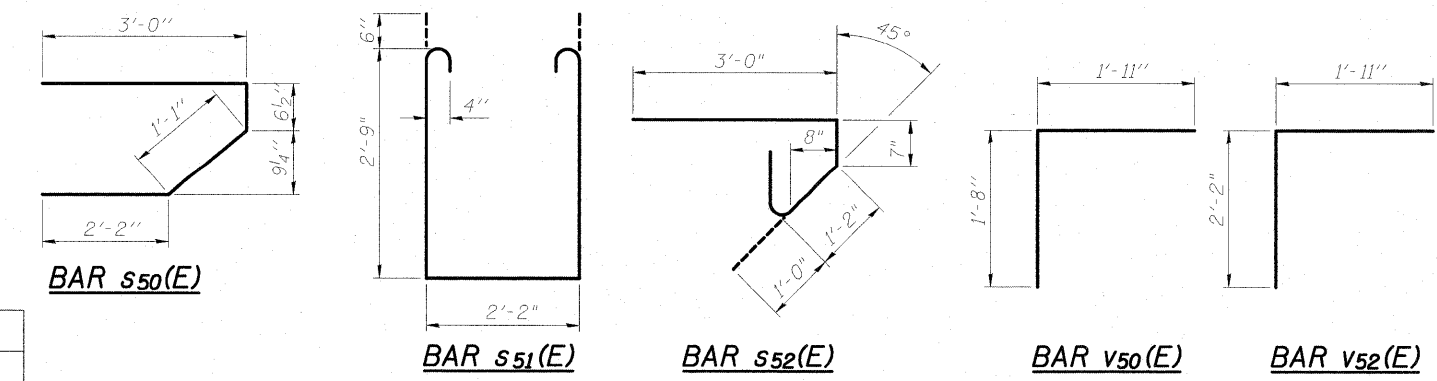
Pound 213,459
Cu. Yd. 876



PARAPET JOINT DETAILS



CUTTING DIAGRAMS



BARS d50(E) & d52(E)

Bar	a
d51(E)	2 1/2"
d52(E)	0"

DESIGNED	AWW
CHECKED	PMH
DRAWN	AMV
CHECKED	AWW

DECK DETAILS AND BILL OF MATERIAL
STRUCTURE NO. 046-0146 (S.B.)
& STRUCTURE NO. 046-0147 (N.B.)

McDonough Associates Inc.
Engineers / Architects
130 East Randolph Street
Chicago, Illinois 60601
(312) 946-8600

SHEET NO. SR-17 SHEETS SR-48	F.A.I. RTE.	SECTION	COUNTY	TOTAL SHEETS	SHEET NO.
	57	(46-2) VBR	KANKAKEE	558	344
	CONTRACT NO. 66409				
FED. ROAD DIST. NO. 3 ILLINOIS FED. AID PROJECT					