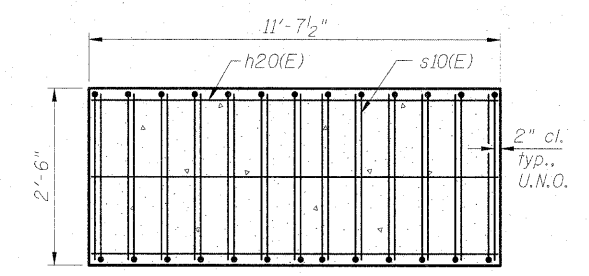
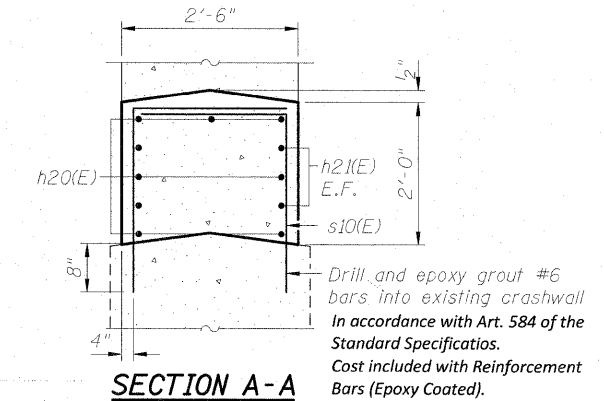
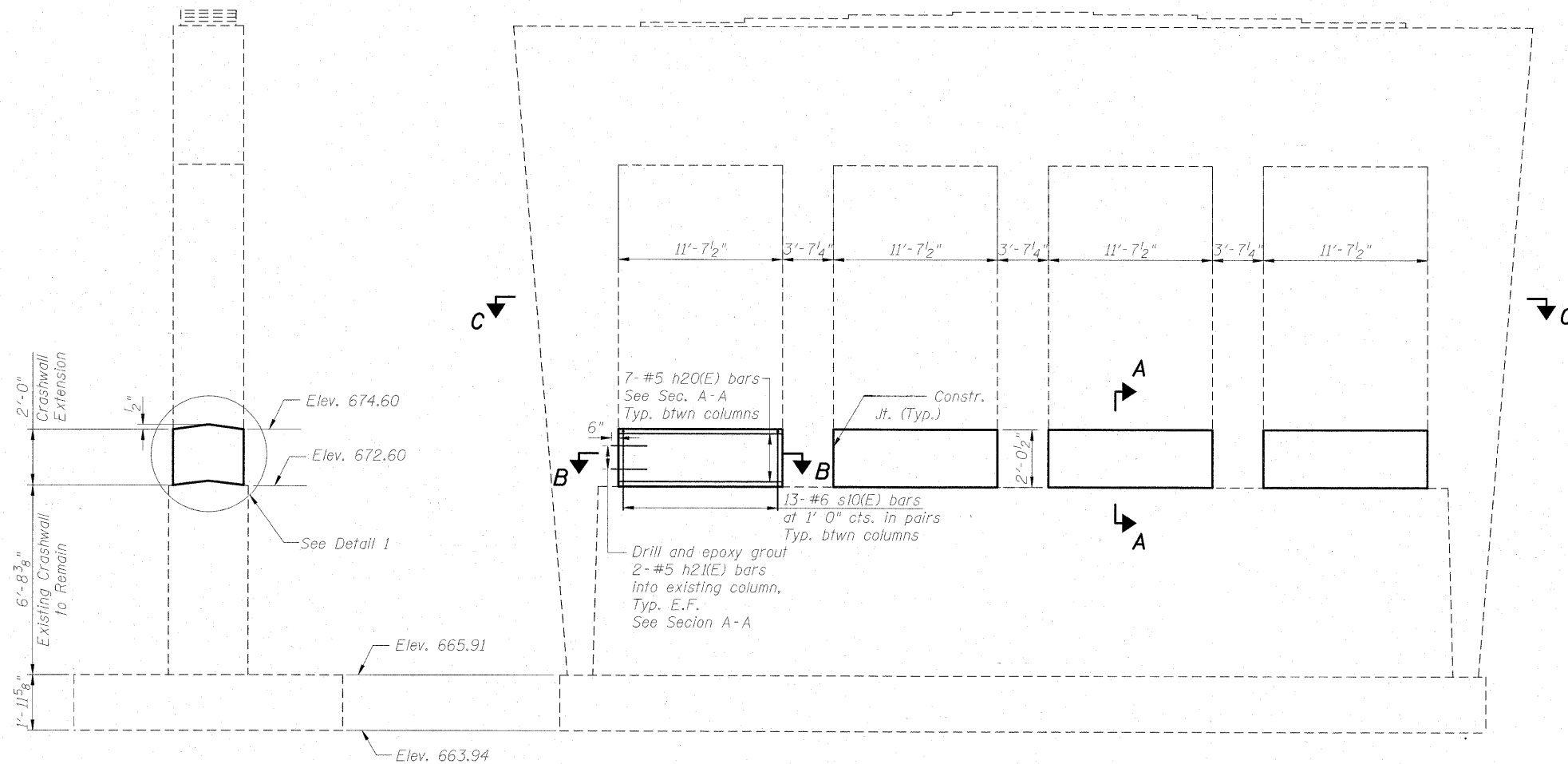


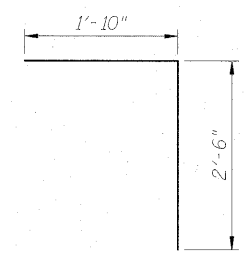
STATE OF ILLINOIS  
DEPARTMENT OF TRANSPORTATION



SECTION B-B

BILL OF MATERIAL

Bar	No.	Size	Length	Shape
h <sub>20</sub> (E)	28	#5	11'-3"	—
h <sub>21</sub> (E)	16	#5	2'-6"	—
s <sub>10</sub> (E)	104	#6	4'-4"	└
Concrete Structures			Cu. Yd.	8.6
Reinforcement Bars, Epoxy Coated			Pound	1,050



BAR s<sub>10</sub>(E)

**CRASHWALL EXTENSION**  
**ARMOUR RD. OVER I-57**  
**F.A.I. RT. 57 - SEC. (46-2) HBR**  
**KANKAKEE COUNTY**  
**STATION 185+54.65**  
**STRUCTURE NO. 046-0126**

DESIGNED	PMH
CHECKED	BB
DRAWN	PMH
CHECKED	BB

**McDonough Associates Inc.**  
Engineers / Architects  
130 East Randolph Street  
Chicago, Illinois 60601  
(312) 946-8600

SHEET NO. CW-1 SHEETS CW-1	F.A.I. RTE.	SECTION	COUNTY	TOTAL SHEETS	SHEET NO.
	57	(46-2) HBR	KANKAKEE	558	380
			CONTRACT NO. 66409		
FED. ROAD DIST. NO. 3 ILLINOIS FED. AID PROJECT					

ELEVATION  
(Looking West)

SECTION C-C

END VIEW