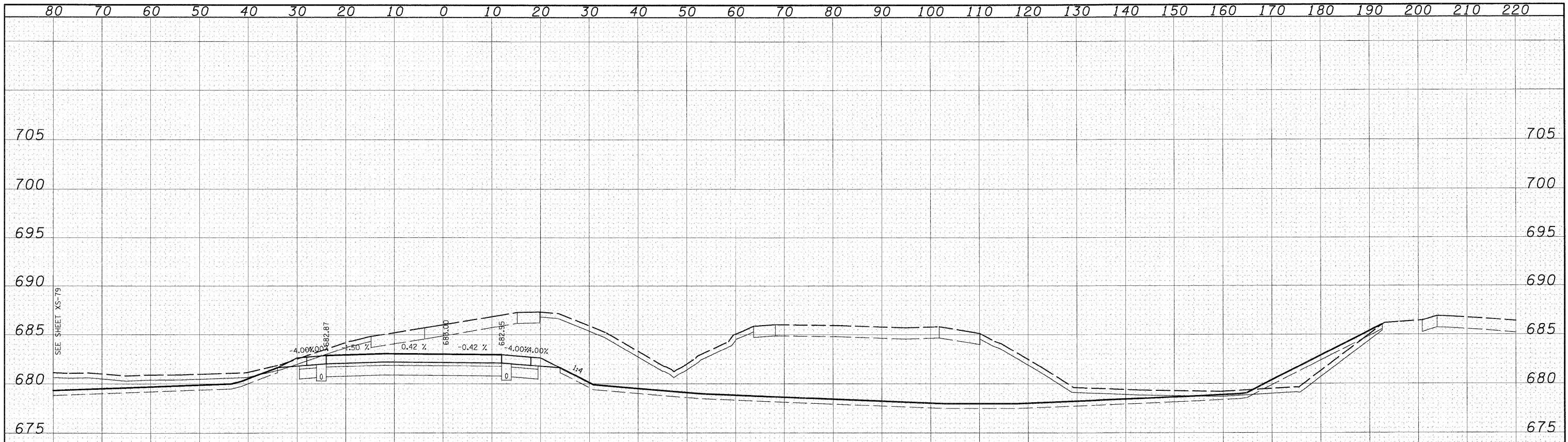


DATE	
BY	
FINAL SURVEY	
PLOTTED	
NOTE BOOK	
AREAS	
AREAS CHECKED	
NO.	

DATE	
BY	
ORIGINAL SURVEY	
PLOTTED	
NOTE BOOK	
AREAS	
AREAS CHECKED	
NO.	



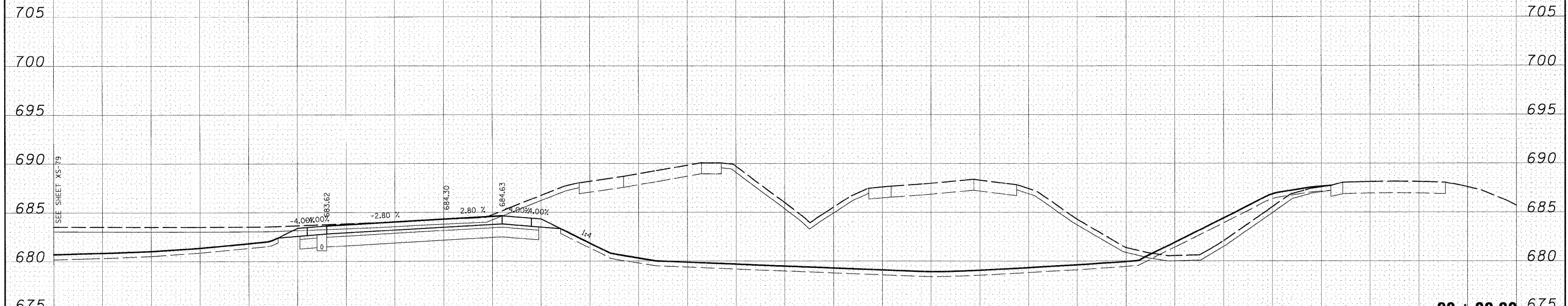
STAGE 1 EARTH EX 0 SQ FT  
 TOPSOIL/UNSUITABLE EX 0 SQ FT  
 EMBANKMENT 0 SQ FT

STAGE 2 EARTH EX 952 SQ FT  
 TOPSOIL/UNSUITABLE EX 194 SQ FT  
 EMBANKMENT 0 SQ FT

STAGE 3 EARTH EX 0 SQ FT  
 TOPSOIL/UNSUITABLE EX 0 SQ FT  
 EMBANKMENT 0 SQ FT

STAGE 4 EARTH EX 502 SQ FT  
 TOPSOIL/UNSUITABLE EX 54 SQ FT  
 EMBANKMENT 30 SQ FT

**30 + 00.00**



STAGE 1 EARTH EX 0 SQ FT  
 TOPSOIL/UNSUITABLE EX 0 SQ FT  
 EMBANKMENT 0 SQ FT

STAGE 2 EARTH EX 1470 SQ FT  
 TOPSOIL/UNSUITABLE EX 213 SQ FT  
 EMBANKMENT 0 SQ FT

STAGE 3 EARTH EX 0 SQ FT  
 TOPSOIL/UNSUITABLE EX 0 SQ FT  
 EMBANKMENT 0 SQ FT

STAGE 4 EARTH EX 449 SQ FT  
 TOPSOIL/UNSUITABLE EX 43 SQ FT  
 EMBANKMENT 51 SQ FT

**29 + 00.00**

FILE NAME = I:\Dgn\sheets\xs203.dgn	USER NAME = EricG	DESIGNED - JCL	REVISED -	<b>STATE OF ILLINOIS DEPARTMENT OF TRANSPORTATION</b>	<b>RAMP E CROSS SECTIONS</b>		F.A.I. RTE. 57	SECTION (46-2) I, HBR, VBR	COUNTY KANKAKEE	TOTAL SHEETS 558	SHEET NO. 525	
PLOT SCALE = 1:10	CHECKED - E.JG	REVISIED -	REVISIED -		SCALE: 1"=10'H; 1"=5'V	SHEET NO. 7 OF 13 SHEETS	STA. 29+00.00	TO STA. 30+00.00	<b>XS-RAMP E-07</b>		CONTRACT NO. 66409	
PLOT DATE = 12/21/2010	DATE - 12/17/10	REVISIED -	REVISIED -		FED. ROAD DIST. NO. 3 ILLINOIS FED. AID PROJECT							