

F.A.P. RTE.	SECTION	COUNTY	TOTAL SHEETS	SHEET NO.
786	(110-B)	LASALLE	5	1
ILLINOIS CONTRACT NO. 66B22				

STATE OF ILLINOIS
DEPARTMENT OF TRANSPORTATION
DIVISION OF HIGHWAYS
**PROPOSED
HIGHWAY PLANS**
FAP ROUTE 786 (IL 170)
SECTION (110-B)

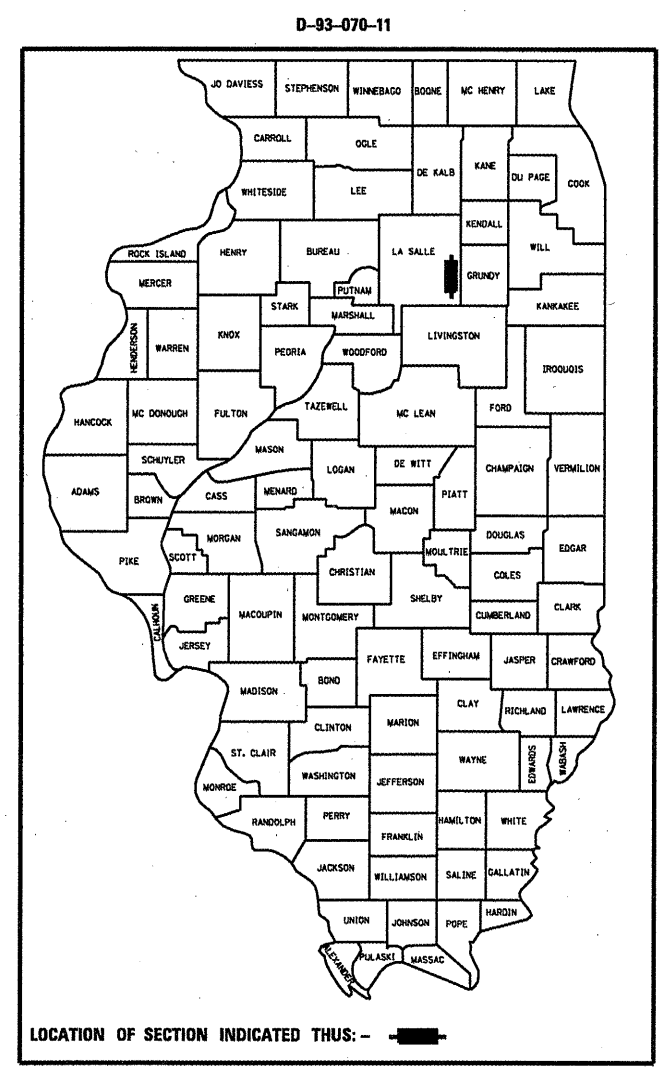
INDEX OF SHEETS

1. COVER SHEET
2. GENERAL NOTES
3. SUMMARY OF QUANTITIES
4. TYPICAL SECTION
5. GENERAL PLAN AND ELEVATION SN 050-0072

STANDARDS

- | | |
|-----------|--|
| 000001-06 | STANDARD SYMBOLS, ABBREVIATIONS AND PATTERNS |
| 001006 | DECIMAL OF AN INCH AND OF A FOOT |
| 701001-02 | OFF-ROAD OPERATIONS 2L, 2W, MORE THAN 15' (4.5 m) AWAY |
| 701006-03 | OFF-ROAD OPERATIONS 2L, 2W, 15' (4.5 m) TO 24" (600 mm) FROM PAVEMENT EDGE |
| 701201-04 | LANE CLOSURE, 2L, 2W, DAY ONLY, FOR SPEEDS Δ 45 MPH |
| 701301-04 | LANE CLOSURE, 2L, 2W, SHORT TIME OPERATIONS |
| 701901-01 | TRAFFIC CONTROL DEVICES |

BRIDGE REPAIR
S.N. 050-0072
FAP ROUTE 786 (IL 170) OVER
AN UNNAMED CREEK
8.33 MILES SOUTH OF US 6
LASALLE COUNTY
C-93-088-11



FUNCTIONAL CLASSIFICATION
RURAL - MINOR ARTERIAL
FAP RTE. 786 (IL 170)
2009 ADT 1650
P.V. 72.73%
S.U. 21.21%
M.U. 6.06%

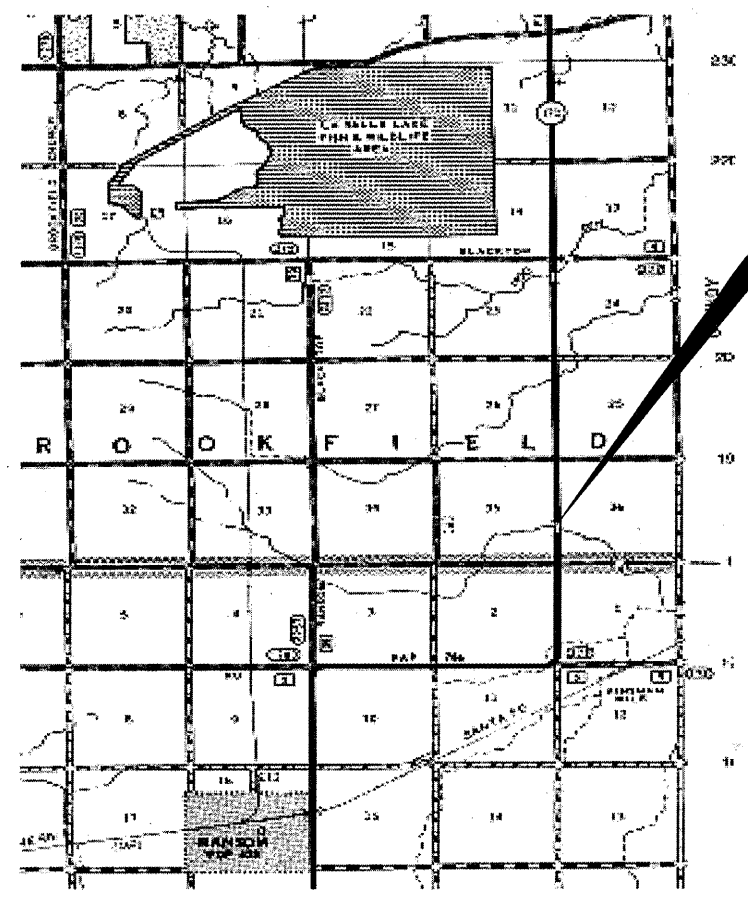
STATE OF ILLINOIS
DEPARTMENT OF TRANSPORTATION
DIVISION OF HIGHWAYS

SUBMITTED 3-16 20 11
Evan S. Thekaldan
DEPUTY DIRECTOR OF HIGHWAYS, REGION ENGINEER

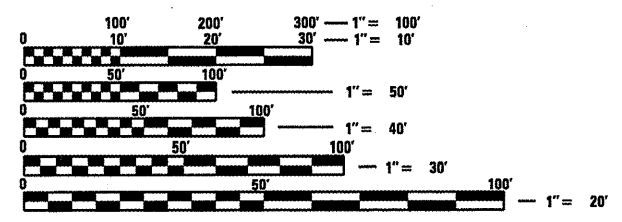
March 25 20 11
Scott E. Stitt, P.E.
Acting ENGINEER OF DESIGN AND ENVIRONMENT

March 25 20 11
Christine M. Reed, Esq.
DIRECTOR OF HIGHWAYS, CHIEF ENGINEER

**PRINTED BY THE AUTHORITY
OF THE STATE OF ILLINOIS**



LOCATION MAP - NOT TO SCALE
POINT LOCATION



FULL SIZE PLANS HAVE BEEN PREPARED USING STANDARD ENGINEERING SCALES. REDUCED SIZED PLANS WILL NOT CONFORM TO STANDARD SCALES. IN MAKING MEASUREMENTS ON REDUCED PLANS, THE ABOVE SCALES MAY BE USED.

J.U.L.I.E.
JOINT UTILITY LOCATION INFORMATION FOR EXCAVATION
1-800-892-0123
OR 811

PROJECT ENGINEER: JOE KANNEL P.E.
UNIT CHIEF: RON WOODSHANK
TOWNSHIP: BROOKFIELD
CONTRACT NO. 66B22

GENERAL NOTES

PLAN DIMENSIONS AND DETAILS RELATIVE TO EXISTING PLANS ARE SUBJECT TO NOMINAL CONSTRUCTION VARIATIONS. THE CONTRACTOR SHALL FIELD VERIFY EXISTING DIMENSIONS AND DETAILS AFFECTING NEW CONSTRUCTION AND MAKE NECESSARY APPROVED ADJUSTMENTS PRIOR TO CONSTRUCTION OR ORDERING OF MATERIALS. SUCH VARIATIONS SHALL NOT BE CAUSE FOR ADDITIONAL COMPENSATION FOR A CHANGE IN SCOPE OF THE WORK; HOWEVER, THE CONTRACTOR WILL BE PAID FOR THE QUANTITY ACTUALLY FURNISHED AT THE UNIT PRICE BID FOR THE WORK.

COST OF REMOVAL AND RE-INSTALLATION OF ALL MEMBERS NECESSARY TO COMPLETE THE WORK AS DETAILED ON THE PLANS AND AS SPECIFIED IN THE SPECIAL PROVISIONS SHALL BE INCLUDED WITH FURNISHING AND ERECTING STRUCTURAL STEEL.

FOR STABILIZATION, ALL TYPE III BARRICADES SHALL REQUIRE A MINIMUM OF FOUR SAND BAGS PER BARRICADE.

ANY REFERENCE TO A STANDARD IN THESE PLANS SHALL BE INTERPRETED TO MEAN THE EDITION AS INDICATED BY THE SUBNUMBER SHOWN IN THE LIST OF STANDARDS OR THE COPY INCLUDED IN THESE PLANS.

THE CONTRACTOR SHALL CONTACT JULIE AT LEAST 48 HOURS PRIOR TO EXCAVATION TO DETERMINE WHICH UTILITIES ARE IN THE AREA.

COMMITMENTS

1. SN 050-0072 IS RESTRICTED TO 20 TON LOAD LIMIT

DATE: 3-16-11

PREPARED BY: Dan Beaud
DISTRICT STUDIES & PLANS ENGINEER

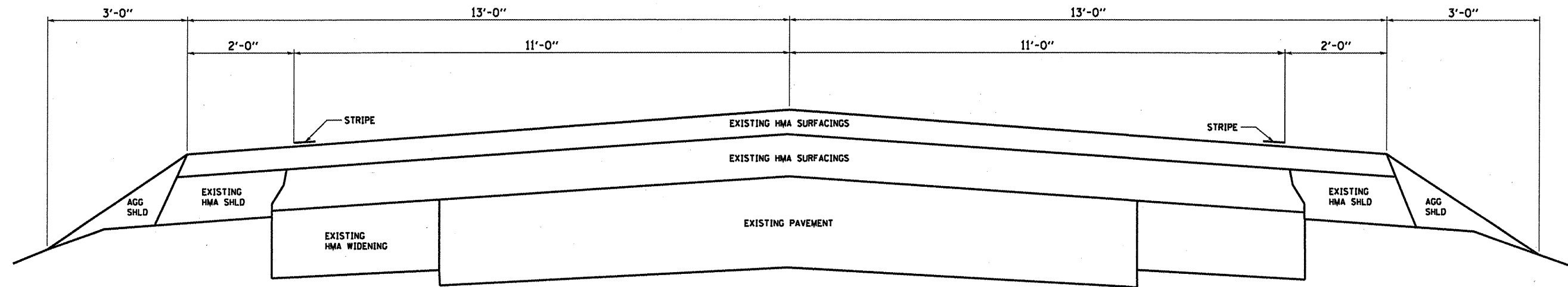
EXAMINED BY: [Signature]
DISTRICT CONSTRUCTION ENGINEER

Wayne L. Phillips
DISTRICT MATERIALS ENGINEER

Bruce C. Grober
DISTRICT OPERATIONS ENGINEER

FILE NAME =	USER NAME = woodshankr1	DESIGNED - RQN_WOODSHANK	REVISED -	STATE OF ILLINOIS DEPARTMENT OF TRANSPORTATION	GENERAL NOTES	F.A.P. RTE.	SECTION	COUNTY	TOTAL SHEETS	SHEET NO.	
c:\pw\work\p1\dot\woodshankr1\d0257538	366922-sht-details.DGN	DRAWN - RQN_WOODSHANK	REVISED -			786	(110-B1)	LASALLE	5	2	
	PLOT SCALE = 100.0000' / IN.	CHECKED -	REVISED -			SCALE: _____ SHEET NO. 1 OF 1 SHEETS STA. _____ TO STA. _____					
	PLOT DATE = Mar 15, 2011 - 02:39:28 PM	DATE -	REVISED -			ILLINOIS FED. AID PROJECT					

CODE NO.	ITEM	UNIT	TOTAL QUANTITY	CONSTR. CODE	
				100% STATE ROADWAY	0040 RURAL
54103300	CORRUGATED STRUCTURAL PLATE PIPE ARCHES 37 SQ. FT.	FOOT	142	142	
59300100	CONTROLLED LOW-STRENGTH MATERIAL	CU YD	228	228	
67100100	MOBILIZATION	L SUM	1	1	
70100450	TRAFFIC CONTROL AND PROTECTION, STANDARD 701201	L SUM	1	1	
X0325444	TEMPORARY CONCRETE BARRIER (INSTALL ONLY)	FOOT	156	156	
Z0030030	IMPACT ATTENUATORS (FULLY REDIRECTIVE, NARROW), TEST LEVEL 3	EACH	4	4	

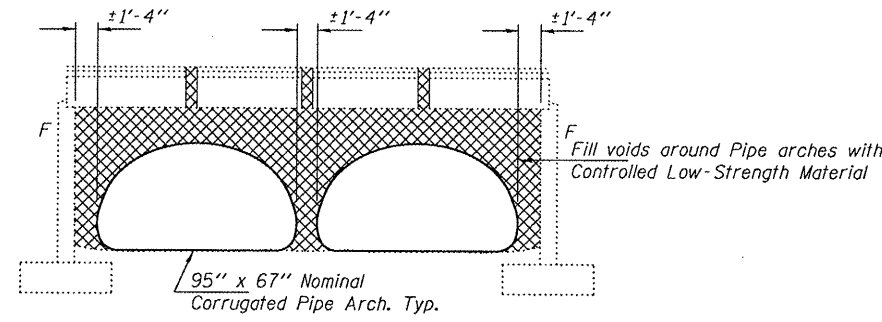


TYPICAL SECTION

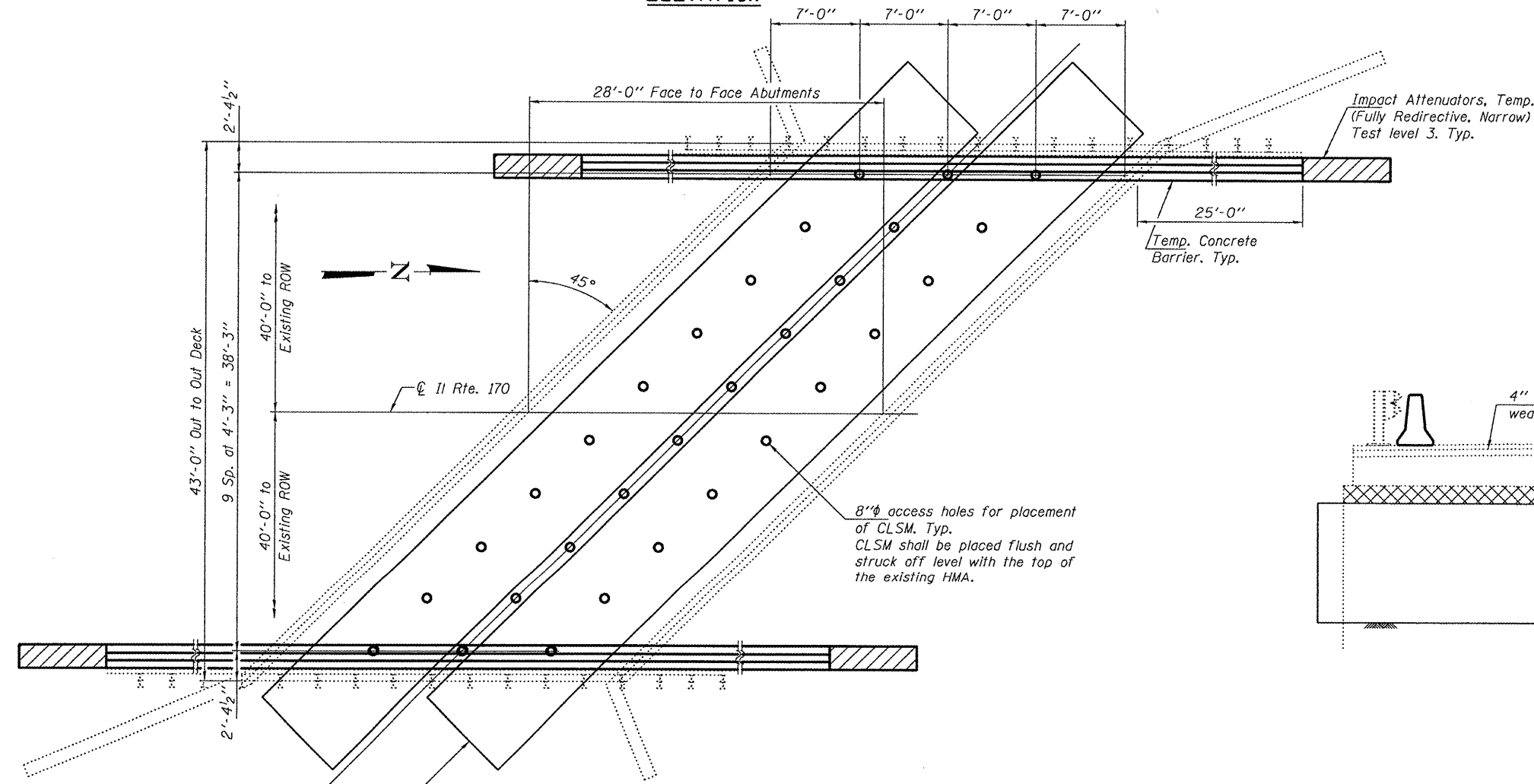
FILE NAME = c:\pwork\pwork\woodshankr1\d0257538	USER NAME = woodshankr1	DESIGNED - RON. WOODSHANK	REVISED -	STATE OF ILLINOIS DEPARTMENT OF TRANSPORTATION	TYPICAL ROADWAY SECTION	F.A.P. RTE. 786	SECTION (110-B)I	COUNTY LASALLE	TOTAL SHEETS 5	SHEET NO. 4
	PLOT SCALE = 1/8" = 1' IN.	DRAWN - RON. WOODSHANK	REVISED -			SCALE: _____	SHEET NO. 1 OF 1 SHEETS	STA. _____ TO STA. _____	CONTRACT NO. 66B22 ILLINOIS FED. AID PROJECT	
PLOT DATE = Mar 15, 2011 - 02:39:53 PM	CHECKED -	DATE -	REVISED -							

GENERAL NOTES

Plan dimensions and details relative to existing plans are subject to nominal construction variations. The Contractor shall field verify existing dimensions and details affecting new construction and make necessary approved adjustments prior to construction or ordering of materials. Such variations shall not be cause for additional compensation for a change in scope of the work, however, the Contractor will be paid for the quantity actually furnished at the unit price bid for the work.

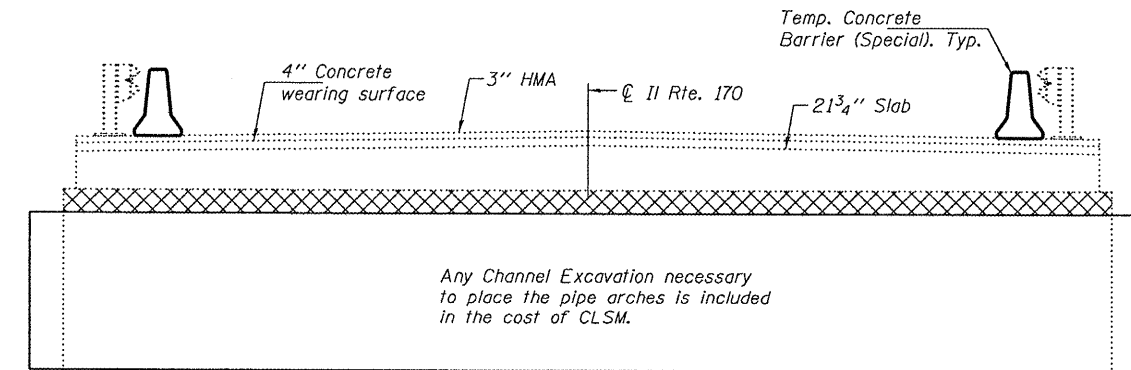


ELEVATION



Pipe shall be cut flush with edge of deck after the CLSM has cured. Typ.

PLAN



SECTION THRU DECK

TOTAL BILL OF MATERIAL

ITEM	UNIT	QUANTITY
Temporary Concrete Barrier (Install only)	Foot	156
Controlled Low-Strength Material	Cu. Yd.	228.0
Corrugated Structural Plate Pipe Arches 37 Sq. Ft.	Foot	142
Impact Attenuators, Temp. (Fully Redirective, Narrow) Test level 3	Each	4



Expires: November 30, 2012

DESIGNED - [Signature]	EXAMINED - [Signature]	DATE - MARCH 23, 2011
CHECKED - [Signature]	PASSED - [Signature]	
DRAWN - baliva		
CHECKED - [Signature]		

STATE OF ILLINOIS
DEPARTMENT OF TRANSPORTATION

GENERAL PLAN & ELEVATION
SN 050-0072

F.A.P. RTE. 786	SECTION 110-B1	COUNTY LaSALLE	TOTAL SHEETS 5	SHEET NO. 5
CONTRACT NO. 66B22			ILLINOIS FED. AID PROJECT	

SHEET NO. 1 OF 1 SHEETS