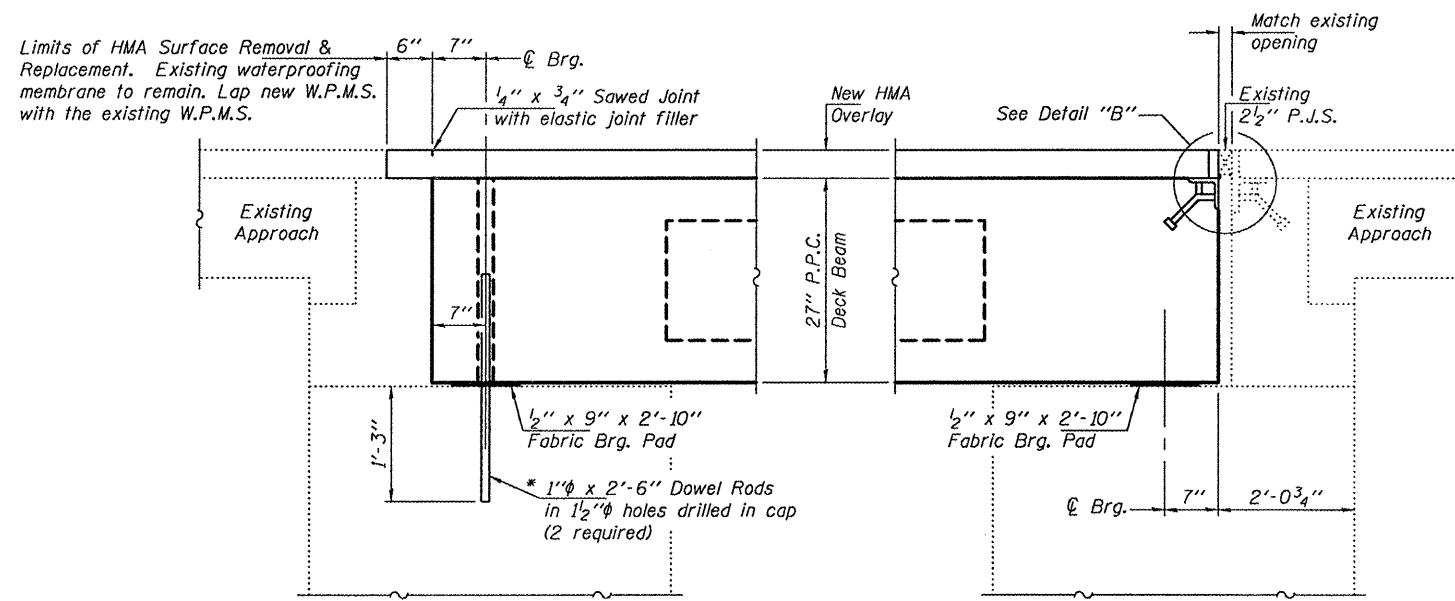


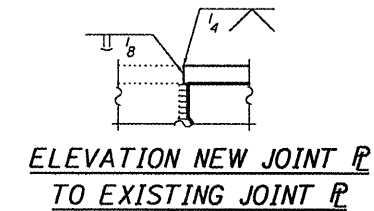
CROSS SECTION
(Looking North)



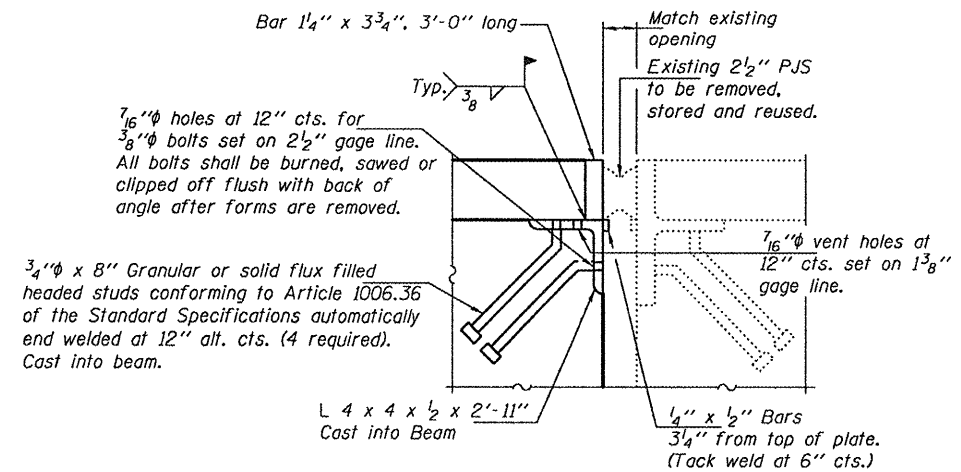
SECTION THRU SOUTH ABUTMENT.

SECTION THRU NORTH ABUTMENT.

* Existing dowel rods are to be burned off, ground flush, and sealed with epoxy prior to placement of new beams. Cost included in Removal of Existing PPC Deck Beams. After beams have been erected holes shall be drilled into cap and dowel rods placed. Dowel holes shall be filled with non-shrink grout to top of beam and allowed to cure a minimum of 24 hours prior to grouting the shear keys.



ELEVATION NEW JOINT P TO EXISTING JOINT P



DETAIL "B"

DESIGNED - ATH	EXAMINED - <i>Jayne F. [Signature]</i>	DATE - MARCH 15, 2011
CHECKED - GGE	ACTING ENGINEER OF STRUCTURAL SERVICES	
DRAWN - Kyle M. Steffen	PASSED - <i>[Signature]</i>	
CHECKED - ATH GGE	ACTING ENGINEER OF BRIDGES AND STRUCTURES	

DESIGNED - ATH	EXAMINED - <i>Jayne F. [Signature]</i>	DATE - MARCH 15, 2011
CHECKED - GGE	ACTING ENGINEER OF STRUCTURAL SERVICES	
DRAWN - Kyle M. Steffen	PASSED - <i>[Signature]</i>	
CHECKED - ATH GGE	ACTING ENGINEER OF BRIDGES AND STRUCTURES	

STATE OF ILLINOIS
DEPARTMENT OF TRANSPORTATION

REPAIR DETAILS
SN 046-0107

F.A.U. RTE. 6188	SECTION (39C-BR1)	COUNTY KANKAKEE	TOTAL SHEETS 9	SHEET NO. 9
CONTRACT NO. 66B23			ILLINOIS FED. AID PROJECT	

SHEET NO. 4 OF 4 SHEETS