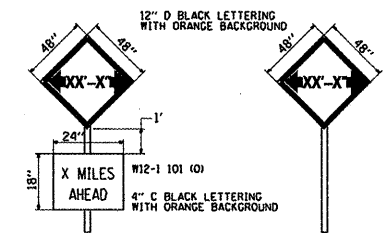


STOP HERE ON RED
R10-6A-2430

STOP HERE ON RED
R10-6A-2430

PLAN
SN 027-0070
STAGE I

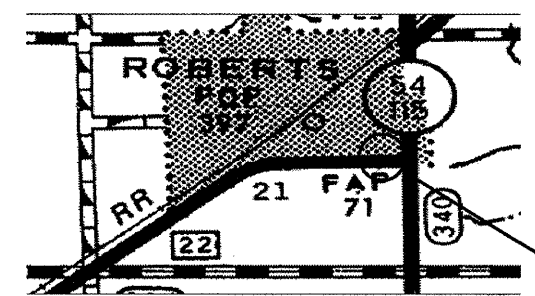
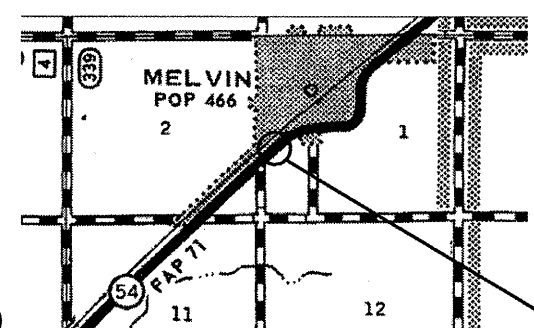
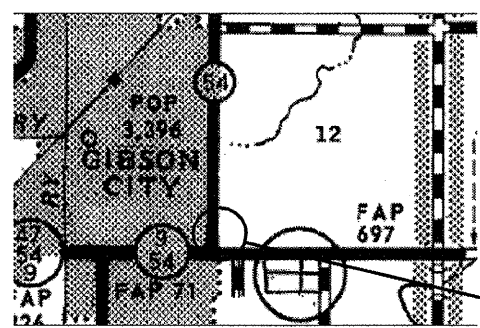


TO BE POST MOUNTED AS SHOWN ELSEWHERE IN THE PLANS.
THE ENGINEER WILL NOTIFY DISTRICT 3 BUREAU OF OPERATIONS 14 CALENDAR DAYS PRIOR TO INSTALLING ANY TRAFFIC CONTROL DEVICES THAT WILL RESTRICT THE PAVEMENT WIDTH.
THE CONTRACTOR SHALL BE RESPONSIBLE FOR COORDINATING WITH THE ENGINEER TO MEET THIS REQUIREMENT.

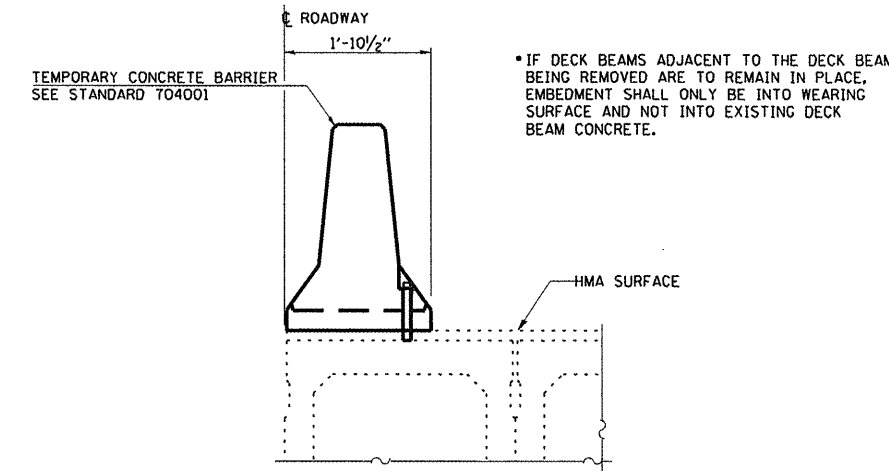
WIDTH RESTRICTION SIGNING DETAILS

TABLE OF WIDTH RESTRICTION SIGNS				
NO. OF SIGNS	TYPE OF SIGN	SIGN	LOCATION	WIDTH RESTRICTION & MILES AHEAD
1	WIDTH RESTRICTION	A	IL ROUTE 54 NB AT INTERSECTION WITH IL ROUTE 9	10'-6" 2.0 MILES AHEAD
1	WIDTH RESTRICTION	B	IL ROUTE 54 SB	10'-6" 7.39 MILES AHEAD
1	WIDTH RESTRICTION	C	IL ROUTE 54 SB AT INTERSECTION WITH IL ROUTE 115	10'-6" 12.86 MILES AHEAD

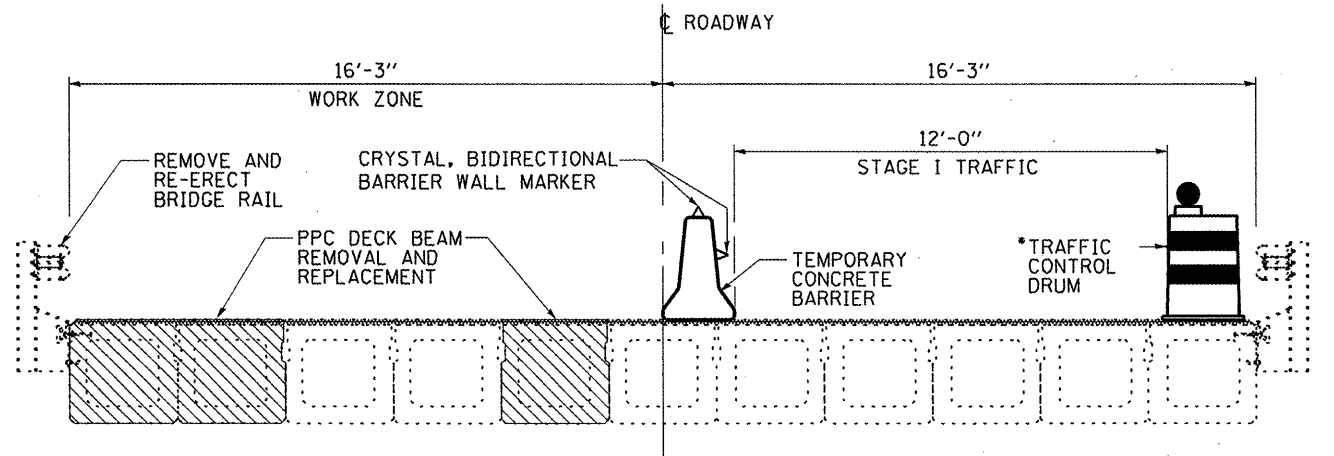
NOTE 1: WIDTH RESTRICTION SIGNS WITHIN TRAFFIC CONTROL AND PROTECTION STANDARDS SHALL BE PLACED AFTER THE ROAD CONSTRUCTION AHEAD SIGN AT A DISTANCE DETERMINED BY THE ENGINEER.



- ① TYPE III BARRICADE TO BE PLACED WHEN NO WORK IS BEING PERFORMED.
- ② BARRIER WALL/GUARDRAIL MARKERS AT 25' CTS. SEE STANDARDS 635011 AND T04001



ANCHOR DETAIL



CROSS SECTION
LOOKING WEST

*TRAFFIC CONTROL DRUMS SHALL REMAIN IN PLACE DURING STAGE I CONSTRUCTION

SYMBOLS

- WORK AREA
- SIGN
- TYPE III BARRICADE
- TRAFFIC SIGNAL WITH BACKPLATES
- DRUM WITH STEADY BURNING BI-DIRECTIONAL LIGHT
- TEMPORARY CONCRETE BARRIER
- TEMPORARY IMPACT ATTENUATOR
- CRYSTAL, BI-DIRECTIONAL BARRIER WALL/GUARDRAIL MARKER

GENERAL NOTES

THIS DETAIL SHEET SHALL BE USED WHERE, AT ANY TIME TRAFFIC CONTROL AND PROTECTION, STANDARD, 701321 AND 704001 ARE SPECIFIED.

TEMPORARY PAVEMENT MARKINGS WHEN SHOWN ON TRAFFIC CONTROL AND PROTECTION STANDARDS OR PLAN DETAILS, SHALL BE PAID FOR ACCORDING TO ARTICLE 703.07 OF THE STANDARD SPECIFICATIONS.

TEMPORARY PAVEMENT MARKING REMOVAL SHALL NOT BE PAID FOR SEPARATELY BUT SHALL BE INCLUDED IN THE COST OF THE STANDARD OR DETAILS REQUIRING TEMPORARY PAVEMENT MARKING.

NOTE: SEE TRAFFIC CONTROL AND PROTECTION STANDARD 701321 FOR DETAILS NOT SHOWN