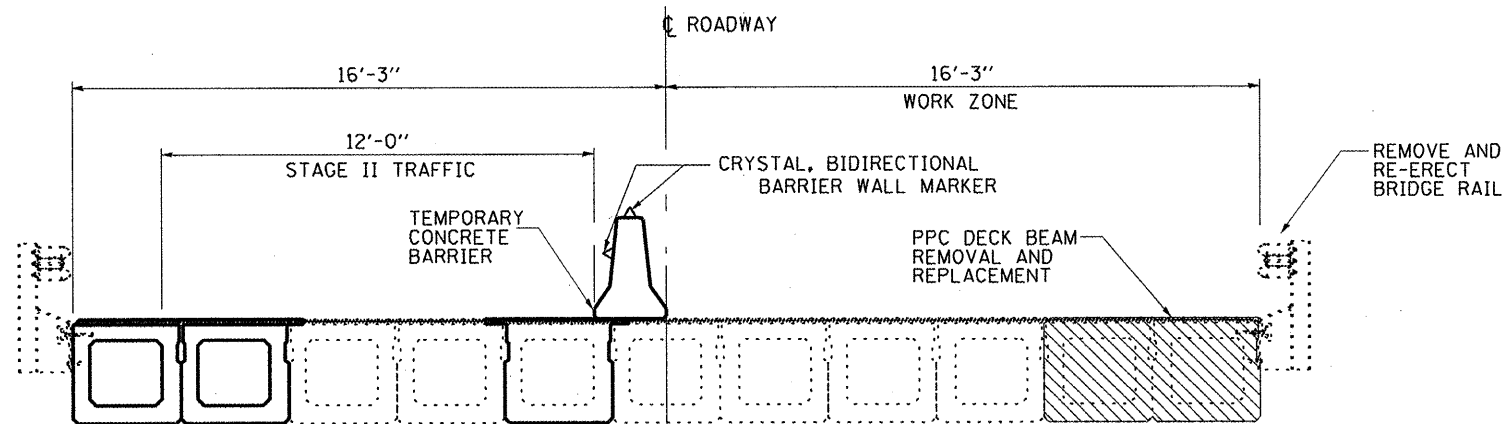


PLAN
SN 027-0070
STAGE II

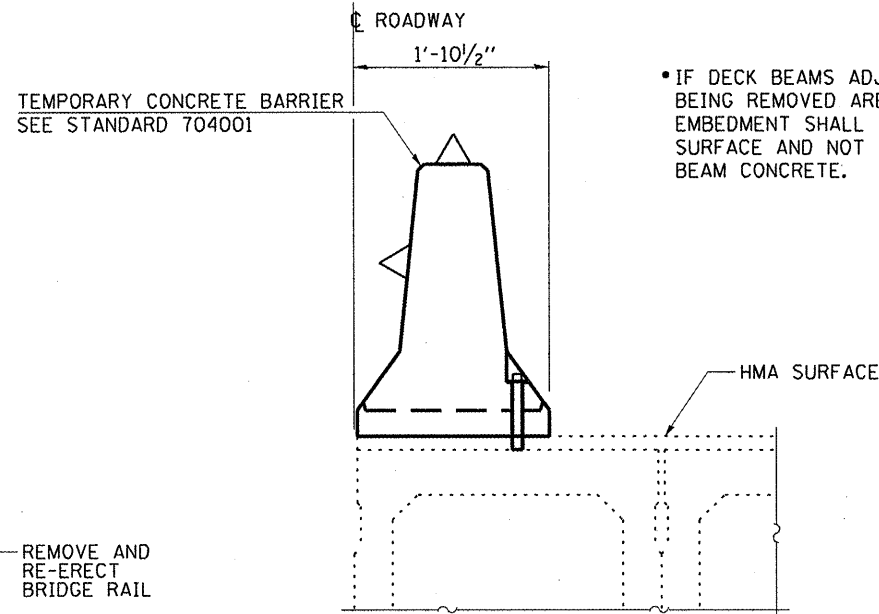
SYMBOLS

- WORK AREA
- SIGN
- TYPE III BARRICADE
- TRAFFIC SIGNAL WITH BACKPLATES
- DRUM WITH STEADY BURNING BI-DIRECTIONAL LIGHT
- TEMPORARY CONCRETE BARRIER
- TEMPORARY IMPACT ATTENUATOR
- CRYSTAL, BI-DIRECTIONAL BARRIER WALL/GUARDRAIL MARKER

- ① TYPE III BARRICADE TO BE PLACED WHEN NO WORK IS BEING PERFORMED.
- ② BARRIER WALL/GUARDRAIL MARKERS AT 25' CTS. SEE STANDARDS 635011 AND 704001



CROSS SECTION
LOOKING WEST



ANCHOR DETAIL

GENERAL NOTES

THIS DETAIL SHEET SHALL BE USED WHERE, AT ANY TIME TRAFFIC CONTROL AND PROTECTION, STANDARD, 701321 AND 704001 ARE SPECIFIED.

TEMPORARY PAVEMENT MARKINGS WHEN SHOWN ON TRAFFIC CONTROL AND PROTECTION STANDARDS OR PLAN DETAILS, SHALL BE PAID FOR ACCORDING TO ARTICLE 703.07 OF THE STANDARD SPECIFICATIONS.

TEMPORARY PAVEMENT MARKING REMOVAL SHALL NOT BE PAID FOR SEPARATELY BUT SHALL BE INCLUDED IN THE COST OF THE STANDARD OR DETAILS REQUIRING TEMPORARY PAVEMENT MARKING.

NOTE: SEE TRAFFIC CONTROL AND PROTECTION STANDARD 701321 FOR DETAILS NOT SHOWN

FILE NAME =	USER NAME = potelyj	DESIGNED - RON WOODSHANK	REVISED -	STATE OF ILLINOIS DEPARTMENT OF TRANSPORTATION	TRAFFIC CONTROL DETAILS STAGE II	F.A.P. RTE.	SECTION	COUNTY	TOTAL SHEETS	SHEET NO.
c:\pw_work\p\dot\potelyj\0257632\0366	26-shrt-details.DGN	DRAWN - RON WOODSHANK	REVISED -			71	(115-BR)	FORD	11	6
	PLOT SCALE = 100.0/30' / IN.	CHECKED -	REVISED -			CONTRACT NO. 66B26				
	PLOT DATE = Feb 25, 2011 - 07:27:06 AM	DATE -	REVISED -			ILLINOIS FED. AID PROJECT				