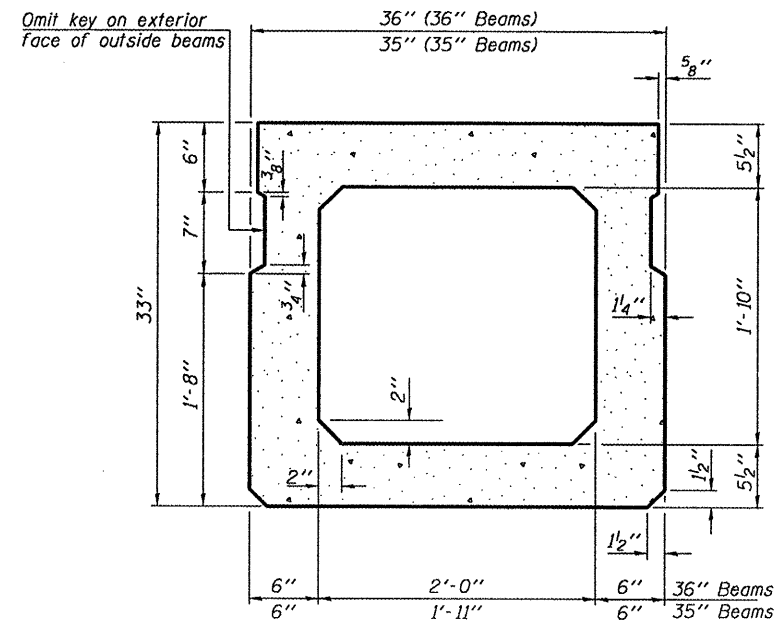
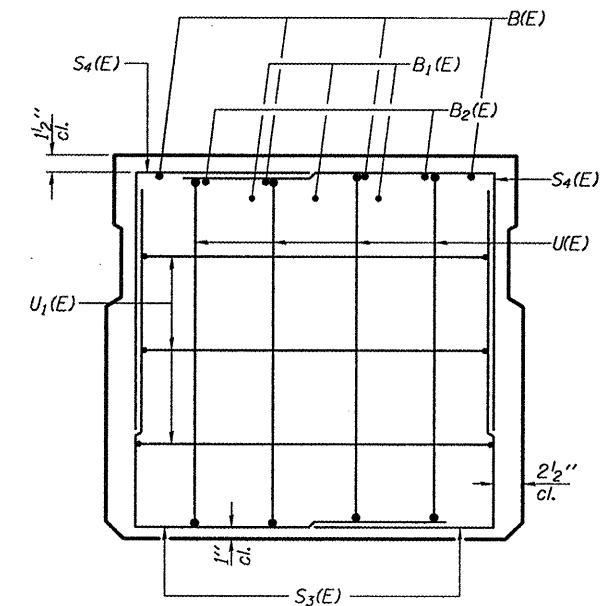


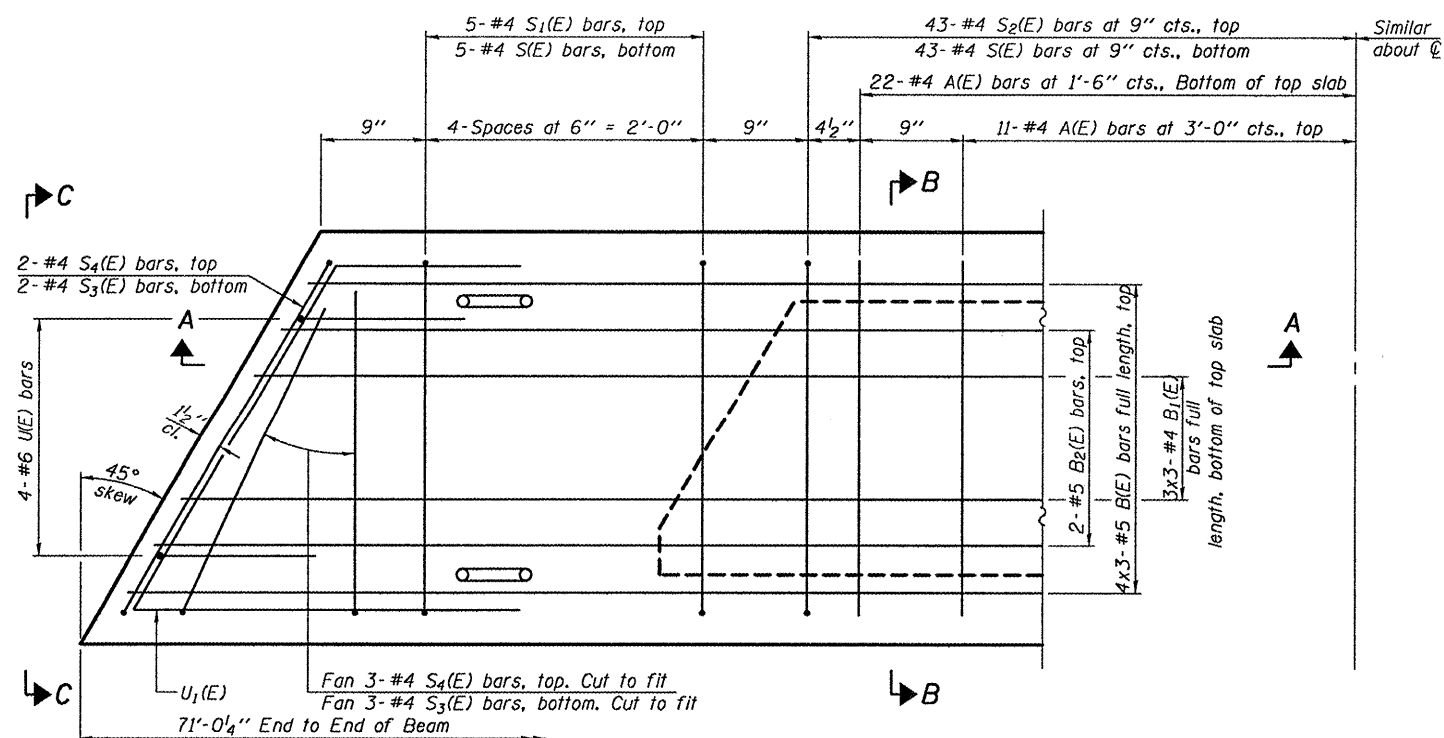
SECTION A-A



SECTION B-B
(Showing dimensions)



VIEW C-C

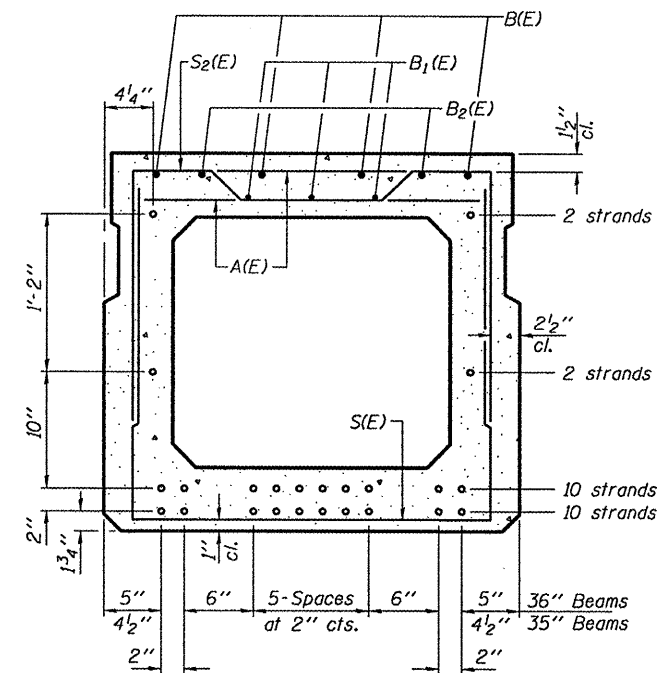


PLAN VIEW

Note: Spacing of S(E) and S2(E) bars may be adjusted up to 4" in the immediate area of the transverse tie diaphragms to miss the block outs for the transverse ties.

MINIMUM BAR LAP

#4 bar = 2'-0"
#5 bar = 2'-6"



SECTION B-B

(Showing reinforcement and permissible strand locations)

Note: Place the number of strands specified in each row symmetrically about the centerline of beam in the permissible strand locations shown.

BAR LIST
ONE 35" BEAM ONLY
(For information only)

Bar	No.	Size	Length	Shape
A(E)	66	#4	2'-7"	—
B(E)	12	#5	25'-3"	—
B1(E)	9	#4	24'-11"	—
B2(E)	4	#5	10'-0"	—
S(E)	96	#4	7'-4"	—
S1(E)	10	#4	6'-2"	┌
S2(E)	86	#4	6'-5"	┌
S3(E)	10	#4	4'-11"	┌
S4(E)	10	#4	4'-4"	┌
U(E)	8	#6	5'-0"	┌
U1(E)	6	#4	8'-5"	┌

Note: See sheet 3 of 5 for additional details and Bill of Material.

BAR LIST
ONE 36" BEAM ONLY
(For information only)

Bar	No.	Size	Length	Shape
A(E)	66	#4	2'-7"	—
B(E)	12	#5	25'-3"	—
B1(E)	9	#4	24'-11"	—
B2(E)	4	#5	10'-0"	—
S(E)	96	#4	7'-5"	—
S1(E)	10	#4	6'-3"	┌
S2(E)	86	#4	6'-6"	┌
S3(E)	10	#4	4'-11"	┌
S4(E)	10	#4	4'-4"	┌
U(E)	8	#6	5'-0"	┌
U1(E)	6	#4	8'-6"	┌

Note: See sheet 3 of 5 for additional details and Bill of Material.

PD-3336-L

7-1-10

DESIGNED - IJL
CHECKED - ATH
DRAWN - Kyle M. Steffen
CHECKED - IJL ATH

EXAMINED
PASSED
ACTING ENGINEER OF BRIDGES AND STRUCTURES

DATE - MARCH 15, 2011

STATE OF ILLINOIS
DEPARTMENT OF TRANSPORTATION

P.P.C. DECK BEAM DETAILS
SN 027-0070

SHEET NO. 2 OF 5 SHEETS

F.A.P. RTE. 71
SECTION (115-BR1)
COUNTY FORD
TOTAL SHEETS 11
SHEET NO. 8
CONTRACT NO. 66B26
ILLINOIS FED. AID PROJECT