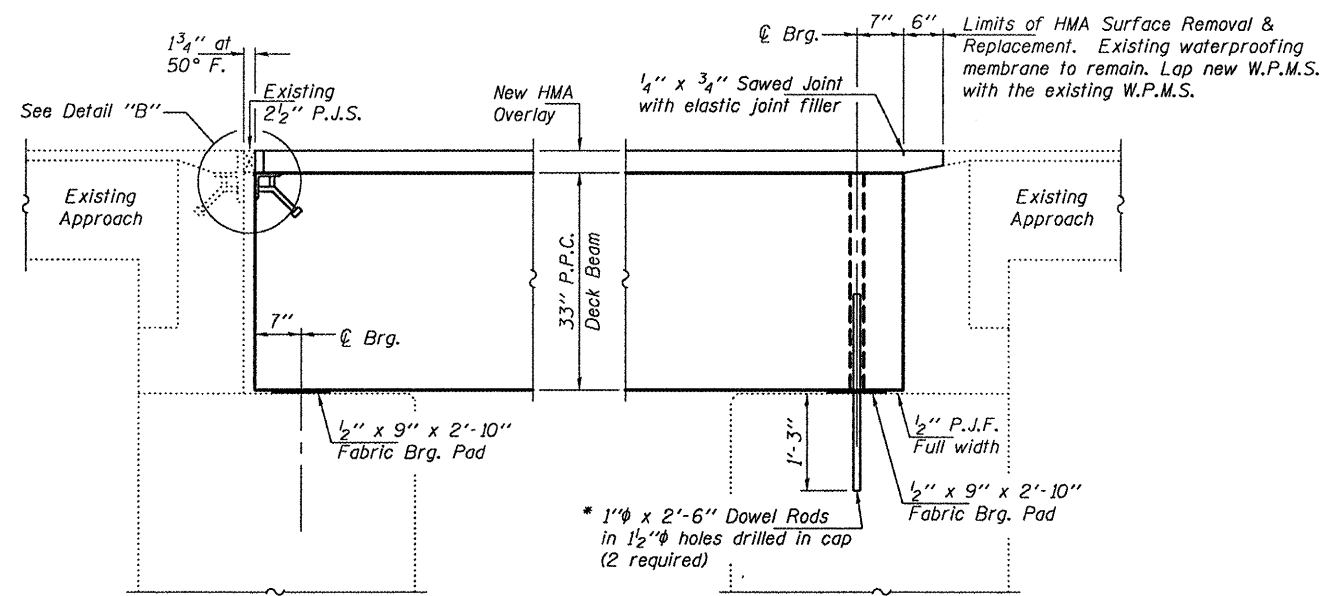
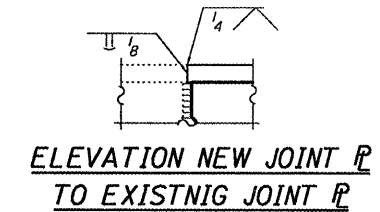


**CROSS-SECTION**  
(Looking West)

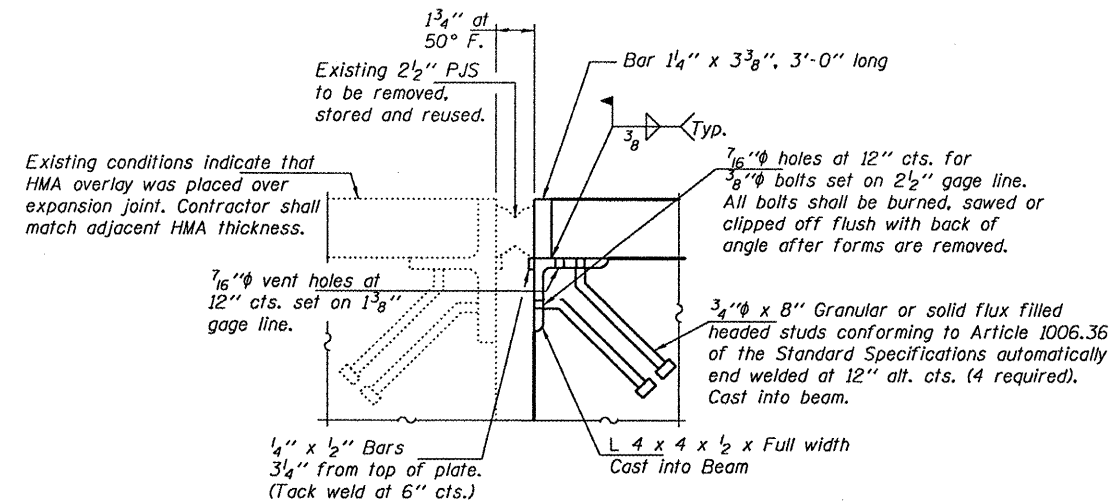


**SECTION THRU EAST ABUTMENT**  
(Dimensions are at Rt. L's)

**SECTION THRU WEST ABUTMENT**  
(Dimensions are at Rt. L's)



**ELEVATION NEW JOINT R TO EXISTING JOINT R**



**DETAIL "B"**

\* Existing dowel rods are to be burned off, ground flush, and sealed with epoxy prior to placement of new beams. Cost included in Removal of Existing PPC Deck Beams. After beams have been erected holes shall be drilled into cap and dowel rods placed. Dowel holes shall be filled with non-shrink grout to top of beam and allowed to cure a minimum of 24 hours prior to grouting the shear keys.

DESIGNED - IJL	EXAMINED - <i>James F. J. [Signature]</i>	DATE - MARCH 15, 2011
CHECKED - ATH	ACTING ENGINEER OF STRUCTURAL SERVICES	
DRAWN - Kyle M. Steffen	PASSED - <i>[Signature]</i>	
CHECKED - IJL ATH	ACTING ENGINEER OF BRIDGES AND STRUCTURES	

STATE OF ILLINOIS  
DEPARTMENT OF TRANSPORTATION

REPAIR DETAILS  
SN 027-0070

F.A.P. RTE. 71	SECTION (115-BR1)	COUNTY FORD	TOTAL SHEETS 11	SHEET NO. 10
			CONTRACT NO. 66B26	
ILLINOIS FED. AID PROJECT				

SHEET NO. 4 OF 5 SHEETS