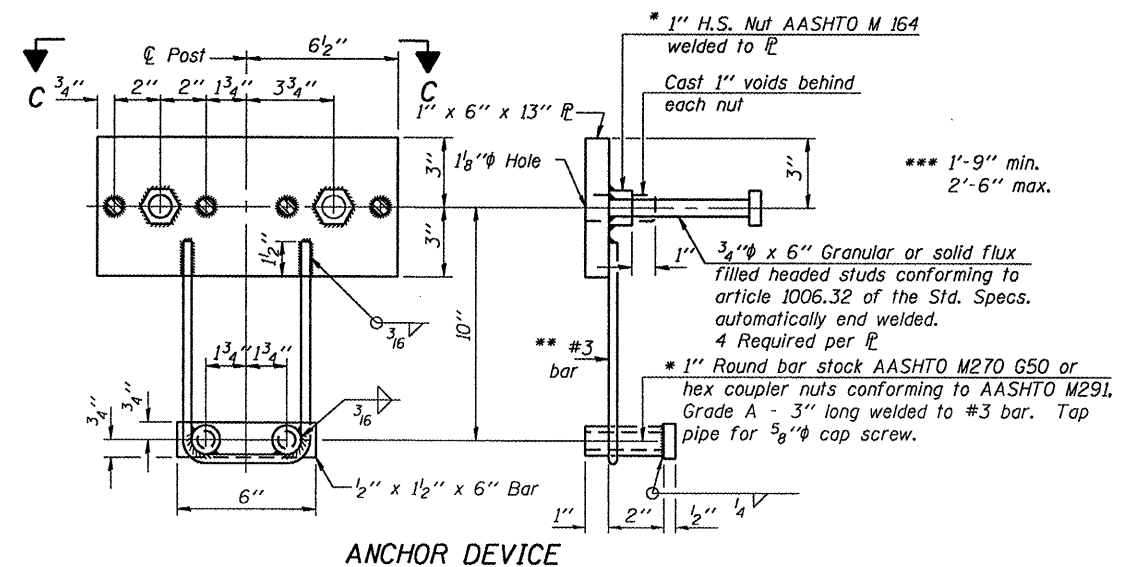
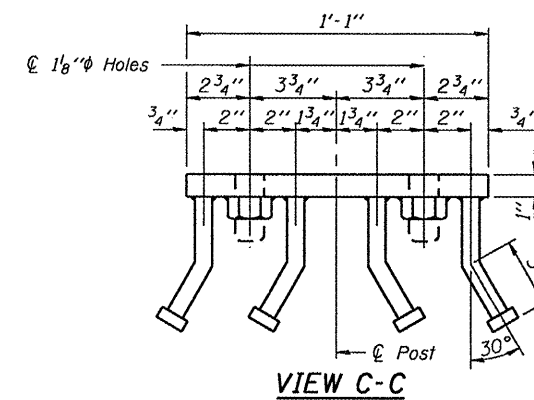


Cost of all labor and materials required for the removal, storage and reinstallation of the existing posts and railing is included in the unit cost per foot for Removing and Re-erecting Existing Railing.

- \* Threaded areas shall be plugged or blocked off during casting of beam.
- \*\* Whenever the lower insert assemblies interfere with strand locations, the #3 bars shall be cut and adjusted in order to allow raising or lowering of the lower inserts. Maximum adjustment not to exceed 1/2".
- \*\*\* The studs of the anchor devices shall be placed below the top reinforcement bars and the outermost longitudinal reinforcement bar shall be placed directly above the studs of the rail post anchor device.



- \* Threaded areas shall be plugged or blocked off during casting of beam.
- \*\* Whenever the lower insert assemblies interfere with strand locations, the #3 bars shall be cut and adjusted in order to allow raising or lowering of the lower inserts. Maximum adjustment not to exceed 1/2".



**BILL OF MATERIAL**

Item	Unit	Quantity
Removing and Re-erecting Existing Railing	Foot	142

DESIGNED - IJL	EXAMINED - <i>James F. Duff</i>	DATE - MARCH 15, 2011
CHECKED - ATH	ACTING ENGINEER OF STRUCTURAL SERVICES	
DRAWN - Kyle M. Steffen	PASSED - <i>Carl P...</i>	
CHECKED - IJL ATH	ACTING ENGINEER OF BRIDGES AND STRUCTURES	

STATE OF ILLINOIS  
DEPARTMENT OF TRANSPORTATION

RAIL POST & ANCHOR DETAILS  
SN 027-0070

SHEET NO. 5 OF 5 SHEETS

F.A.P. RTE. 71	SECTION (115-BR)I	COUNTY FORD	TOTAL SHEETS 11	SHEET NO. 11
			CONTRACT NO. 66B26	
ILLINOIS FED. AID PROJECT				