

F.A.P. RTE.	SECTION	COUNTY	TOTAL SHEETS	SHEET NO.
71	(115-BR)I	FORD	11	1
		ILLINOIS	CONTRACT NO. 66B26	

**STATE OF ILLINOIS**  
**DEPARTMENT OF TRANSPORTATION**  
**DIVISION OF HIGHWAYS**  
**PROPOSED**  
**HIGHWAY PLANS**

**FAP ROUTE 71 (IL 54)**  
**SECTION (115-BR)I**

**BRIDGE REPAIR**  
**SN 027-0070**  
**CARRYING FAP 71 (IL 54) OVER A DITCH**  
**2.33 MILES NORTH OF IL ROUTE 9**  
**FORD COUNTY**  
**C-93-092-11**

**INDEX OF SHEETS**

1. COVER SHEET
2. GENERAL NOTES
3. SUMMARY OF QUANTITIES
4. TYPICAL SECTIONS
- 5 - 6. STAGING DETAILS
7. PLAN AND ELEVATION SN 027-0070
- 8 - 9. P.P.C. DECK BEAM DETAILS SN 027-0070
10. REPAIR DETAILS
11. RAIL POST AND ANCHOR DETAILS

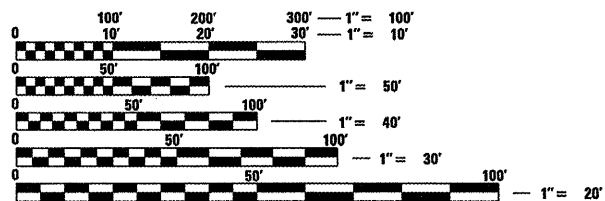
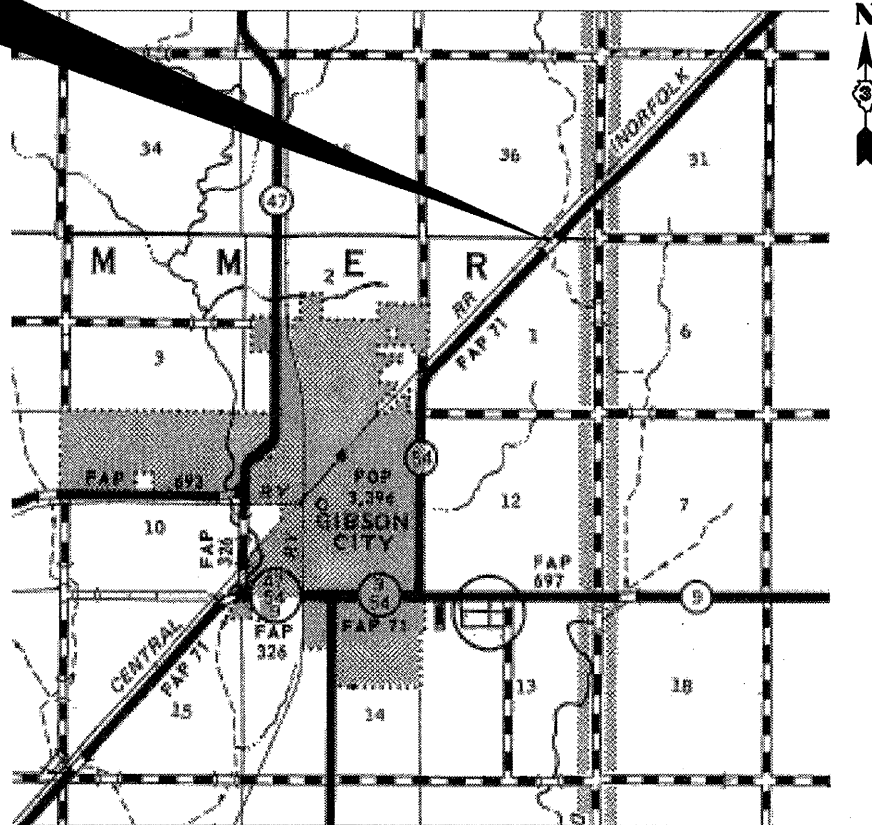
**STANDARDS**

- |           |  |
|-----------|--|
| 000001-06 | STANDARD SYMBOLS, ABBREVIATIONS AND PATTERNS                               |
| 001006    | DECIMAL OF AN INCH AND OF A FOOT   |
| 701001-02 | OFF-ROAD OPERATIONS 2L, 2W, MORE THAN 4.5 m (15') AWAY                     |
| 701006-03 | OFF-ROAD OPERATIONS 2L, 2W, 4.5 m (15') TO 600 mm (24") FROM PAVEMENT EDGE |
| 701011-02 | OFF-ROAD MOVING OPERATIONS 2L, 2W, DAY ONLY                                |
| 701201-04 | LANE CLOSURE, 2L, 2W, DAY ONLY, FOR SPEEDS ≥ 45 MPH                        |
| 701301-04 | LANE CLOSURE, 2L, 2W, SHORT TIME OPERATIONS                                |
| 701321-11 | LANE CLOSURE, 2L, 2W, BRIDGE REPAIR WITH BARRIER                           |
| 701901-01 | TRAFFIC CONTROL DEVICES  |
| 704001-06 | TEMPORARY CONCRETE BARRIER   |



**FUNCTIONAL CLASSIFICATION**  
 MINOR ARTERIAL  
 FAP RTE. 71 (IL 54)  
 2009 ADT 1800  
 P.V. 92.72%  
 S.U. 5.00%  
 M.U. 8.33 %

**PROJECT LOCATION**



FULL SIZE PLANS HAVE BEEN PREPARED USING STANDARD ENGINEERING SCALES. REDUCED SIZED PLANS WILL NOT CONFORM TO STANDARD SCALES. IN MAKING MEASUREMENTS ON REDUCED PLANS, THE ABOVE SCALES MAY BE USED.

J.U.L.I.E.  
 JOINT UTILITY LOCATION INFORMATION FOR EXCAVATION  
 1-800-892-0123  
 OR 811

**PROJECT ENGINEER: JOE KANNEL P.E.**  
**UNIT CHIEF: RON WOODSHANK**  
**TOWNSHIP: DRUMMER**

**CONTRACT NO. 66B26**

STATE OF ILLINOIS  
 DEPARTMENT OF TRANSPORTATION  
 DIVISION OF HIGHWAYS

SUBMITTED 02/25 20 11  
Evan S. Therkalden  
 DEPUTY DIRECTOR OF HIGHWAYS, REGION ENGINEER

March 05 20 11  
Scott E. Stitt P.E. /br  
 acting ENGINEER OF DESIGN AND ENVIRONMENT

March 05 20 11  
Christine M. Reed /br  
 DIRECTOR OF HIGHWAYS, CHIEF ENGINEER

**PRINTED BY THE AUTHORITY**  
**OF THE STATE OF ILLINOIS**

**GENERAL NOTES**

PLAN DIMENSIONS AND DETAILS RELATIVE TO EXISTING PLANS ARE SUBJECT TO NOMINAL CONSTRUCTION VARIATIONS. THE CONTRACTOR SHALL FIELD VERIFY EXISTING DIMENSIONS AND DETAILS AFFECTING NEW CONSTRUCTION AND MAKE NECESSARY APPROVED ADJUSTMENTS PRIOR TO CONSTRUCTION OR ORDERING OF MATERIALS. SUCH VARIATIONS SHALL NOT BE CAUSE FOR ADDITIONAL COMPENSATION FOR A CHANGE IN SCOPE OF THE WORK; HOWEVER, THE CONTRACTOR WILL BE PAID FOR THE QUANTITY ACTUALLY FURNISHED AT THE UNIT PRICE BID FOR THE WORK.

COST OF REMOVAL AND RE-INSTALLATION OF ALL MEMBERS NECESSARY TO COMPLETE THE WORK AS DETAILED ON THE PLANS AND AS SPECIFIED IN THE SPECIAL PROVISIONS SHALL BE INCLUDED WITH FURNISHING AND ERECTING STRUCTURAL STEEL.

FOR STABILIZATION, ALL TYPE III BARRICADES SHALL REQUIRE A MINIMUM OF FOUR SAND BAGS PER BARRICADE.

ANY REFERENCE TO A STANDARD IN THESE PLANS SHALL BE INTERPRETED TO MEAN THE EDITION AS INDICATED BY THE SUBNUMBER SHOWN IN THE LIST OF STANDARDS OR THE COPY INCLUDED IN THESE PLANS.

THE CONTRACTOR SHALL CONTACT JULIE AT LEAST 48 HOURS PRIOR TO EXCAVATION TO DETERMINE WHICH UTILITIES ARE IN THE AREA.

**COMMITMENTS**

NONE 01/26/2011

	HMA SURFACE
PG GRADE	PG64-22
DESIGN AIR VOIDS	4.0% @ N50
MIXTURE COMPOSITION	IL 12.5 or IL 9.5
FRICTION AGGREGATE	MIXTURE C
DENSITY CONTROL METHOD	NUCLEAR

DATE: 02/25/2011  
 PREPARED BY: Dave Brunk  
 DISTRICT STUDIES & PLANS ENGINEER  
 EXAMINED BY: Hubert K. Long  
 DISTRICT CONSTRUCTION ENGINEER  
Wayne Phillips  
 DISTRICT MATERIALS ENGINEER  
Bruce A. Husch  
 DISTRICT OPERATIONS ENGINEER

CODE NO.	ITEM	UNIT	TOTAL QUANTITY	CONSTR. CODE
				STATE FUNDS 100% STATE STRUCTURE 0014 RURAL
40603310	HOT-MIX ASPHALT SURFACE COURSE, MIX "C", N50	TON	16	16
50400605	PRECAST PRESTRESSED CONCRETE DECK BEAMS (33" DEPTH)	SQ FT	1059.4	1059.4
58100200	WATERPROOFING MEMBRANE SYSTEM	SQ YD	135	135
58300100	PORTLAND CEMENT MORTAR FAIRING COURSE	FOOT	426	426
67100100	MOBILIZATION	L SUM	1	1
70100405	TRAFFIC CONTROL AND PROTECTION, STANDARD 701321	EACH	1	1
70100450	TRAFFIC CONTROL AND PROTECTION, STANDARD 701201	L SUM	1	1
70106500	TEMPORARY BRIDGE TRAFFIC SIGNALS	EACH	1	1
70400100	TEMPORARY CONCRETE BARRIER	FOOT	260	260
70400200	RELOCATE TEMPORARY CONCRETE BARRIER	FOOT	260	260
X0320047	REMOVAL OF EXISTING PRECAST PRESTRESSED CONCRETE DECK BEAMS	SQ FT	1065.3	1065.3
Z0007122	REMOV <sup>ING</sup> AND RE-ERECT <sup>ING</sup> EXISTING RAILING	FOOT	142	142
X4400196	HOT-MIX ASPHALT SURFACE REMOVAL, SPECIAL	SQ YD	16.7	16.7
Z0001900	ASBESTOS BEARING PAD REMOVAL	EACH	5	5
Z0030250	IMPACT ATTENUATORS, TEMPORARY (NON- REDIRECTIVE), TEST LEVEL 3	EACH	2	2
Z0030350	IMPACT ATTENUATORS, RELOCATE (NON- REDIRECTIVE), TEST LEVEL 3	EACH	2	2

FILE NAME =	USER NAME = potelyj	DESIGNED - RON WOODSHANK	REVISED -
ca:\pw_work\pwidot\potelyj\d0257632\036826-shd-details.DGN		DRAWN - RON WOODSHANK	REVISED -
PLOT SCALE = 100.0/431 / IN.		CHECKED -	REVISED -
PLOT DATE = Feb 24, 2011 - 03:58:06 PM		DATE -	REVISED -

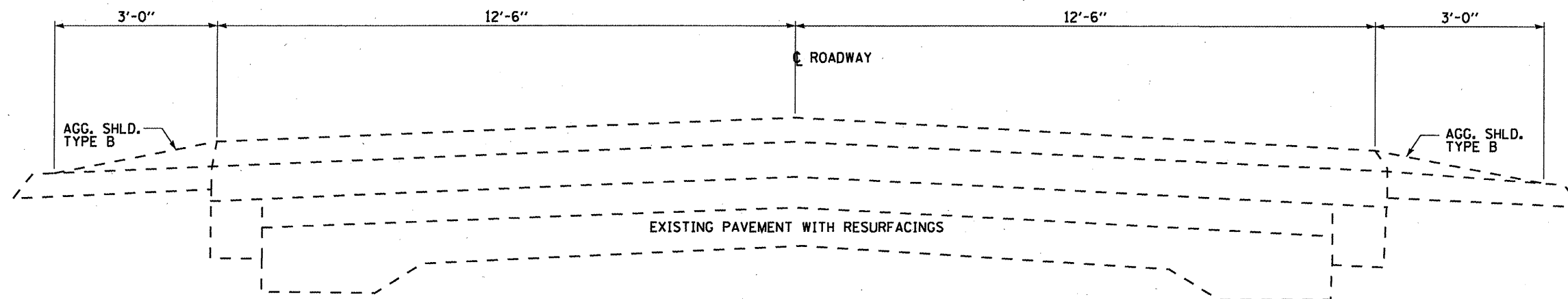
**STATE OF ILLINOIS  
DEPARTMENT OF TRANSPORTATION**

**SUMMARY OF QUANTITIES**

SCALE: \_\_\_\_\_ SHEET NO. 1 OF 1 SHEETS STA. \_\_\_\_\_ TO STA. \_\_\_\_\_

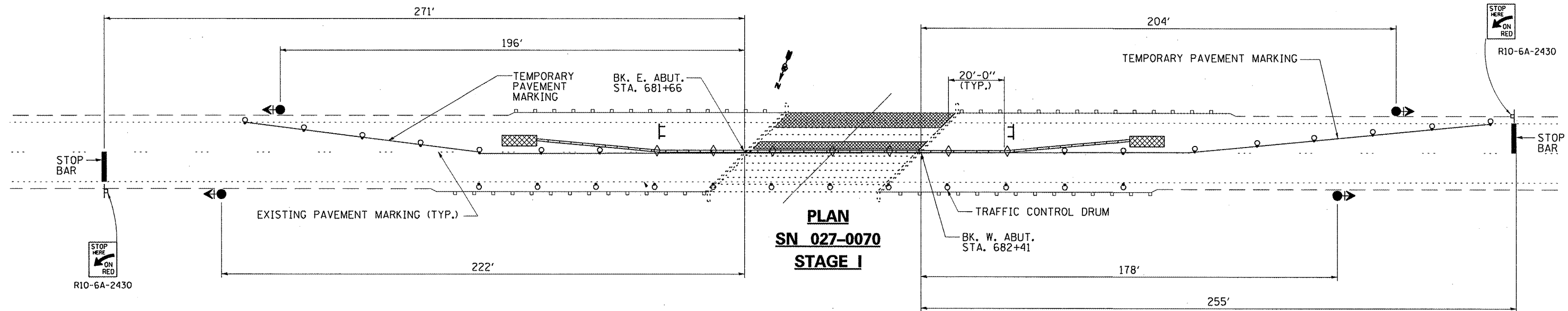
F.A.P. RTE.	SECTION	COUNTY	TOTAL SHEETS	SHEET NO.
71	(115-BRI)	FORD	11	3
CONTRACT NO. 66B26			ILLINOIS FED. AID PROJECT	

Rev.



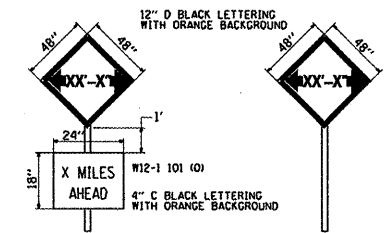
**TYPICAL ROADWAY SECTION**

FILE NAME =	USER NAME = woodshank-r	DESIGNED - RON WOODSHANK	REVISED -	STATE OF ILLINOIS DEPARTMENT OF TRANSPORTATION	TYPICAL ROADWAY SECTION	F.A.P. RTE. =	SECTION	COUNTY	TOTAL SHEETS	SHEET NO.	
c:\pw_work\pwidot\woodshank-r\d0256221\	Deck Beam Repl 11-0366826-shd-details.DGN	DRAWN - RON WOODSHANK	REVISED -			71	(115-BR1)	FORD	11	4	
	PLOT SCALE = 100.0000' / IN.	CHECKED -	REVISED -			CONTRACT NO. 66B26		ILLINOIS FED. AID PROJECT			
	PLOT DATE = Feb 14, 2011 - 8:23:45 AM	DATE -	REVISED -			SCALE: _____	SHEET NO. 1 OF 1 SHEETS	STA. _____ TO STA. _____			



STOP HERE ON RED  
R10-6A-2430

STOP HERE ON RED  
R10-6A-2430

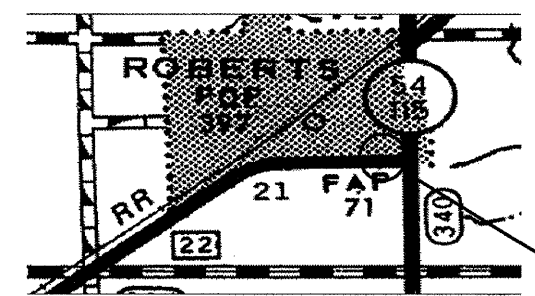
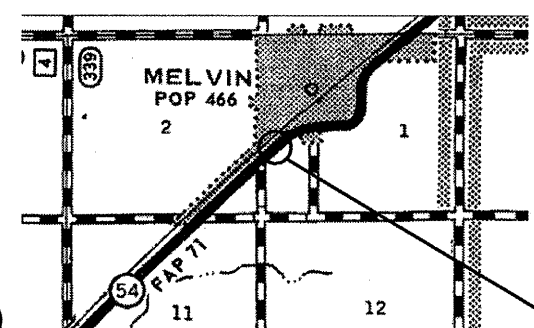
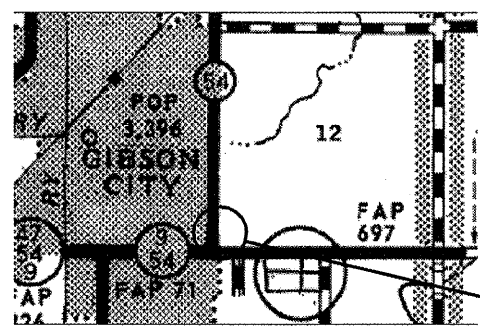


TO BE POST MOUNTED AS SHOWN ELSEWHERE IN THE PLANS.  
THE ENGINEER WILL NOTIFY DISTRICT 3 BUREAU OF OPERATIONS 14 CALENDAR DAYS PRIOR TO INSTALLING ANY TRAFFIC CONTROL DEVICES THAT WILL RESTRICT THE PAVEMENT WIDTH.  
THE CONTRACTOR SHALL BE RESPONSIBLE FOR COORDINATING WITH THE ENGINEER TO MEET THIS REQUIREMENT.

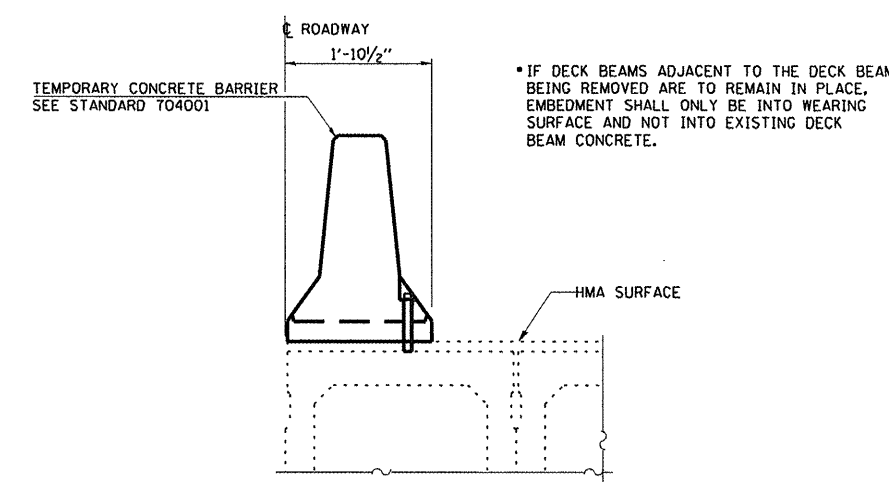
**WIDTH RESTRICTION SIGNING DETAILS**

TABLE OF WIDTH RESTRICTION SIGNS				
NO. OF SIGNS	TYPE OF SIGN	SIGN	LOCATION	WIDTH RESTRICTION & MILES AHEAD
1	WIDTH RESTRICTION	A	IL ROUTE 54 NB AT INTERSECTION WITH IL ROUTE 9	10'-6" 2.0 MILES AHEAD
1	WIDTH RESTRICTION	B	IL ROUTE 54 SB	10'-6" 7.39 MILES AHEAD
1	WIDTH RESTRICTION	C	IL ROUTE 54 SB AT INTERSECTION WITH IL ROUTE 115	10'-6" 12.86 MILES AHEAD

NOTE 1: WIDTH RESTRICTION SIGNS WITHIN TRAFFIC CONTROL AND PROTECTION STANDARDS SHALL BE PLACED AFTER THE ROAD CONSTRUCTION AHEAD SIGN AT A DISTANCE DETERMINED BY THE ENGINEER.



- ① TYPE III BARRICADE TO BE PLACED WHEN NO WORK IS BEING PERFORMED.
- ② BARRIER WALL/GUARDRAIL MARKERS AT 25' CTS. SEE STANDARDS 635011 AND 704001



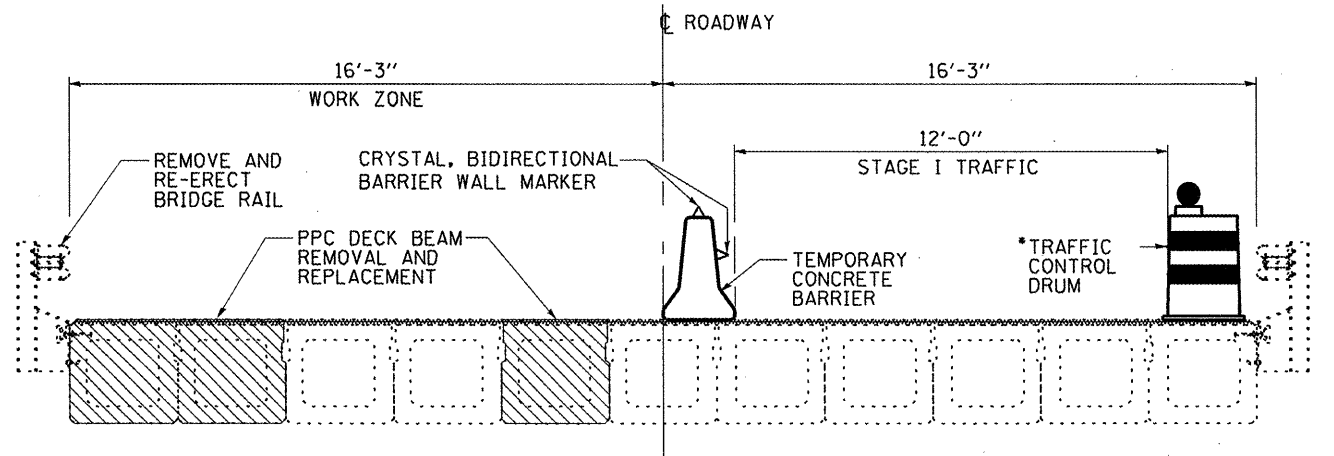
**ANCHOR DETAIL**

**GENERAL NOTES**

THIS DETAIL SHEET SHALL BE USED WHERE, AT ANY TIME TRAFFIC CONTROL AND PROTECTION, STANDARD, 701321 AND 704001 ARE SPECIFIED.

TEMPORARY PAVEMENT MARKINGS WHEN SHOWN ON TRAFFIC CONTROL AND PROTECTION STANDARDS OR PLAN DETAILS, SHALL BE PAID FOR ACCORDING TO ARTICLE 703.07 OF THE STANDARD SPECIFICATIONS.

TEMPORARY PAVEMENT MARKING REMOVAL SHALL NOT BE PAID FOR SEPARATELY BUT SHALL BE INCLUDED IN THE COST OF THE STANDARD OR DETAILS REQUIRING TEMPORARY PAVEMENT MARKING.



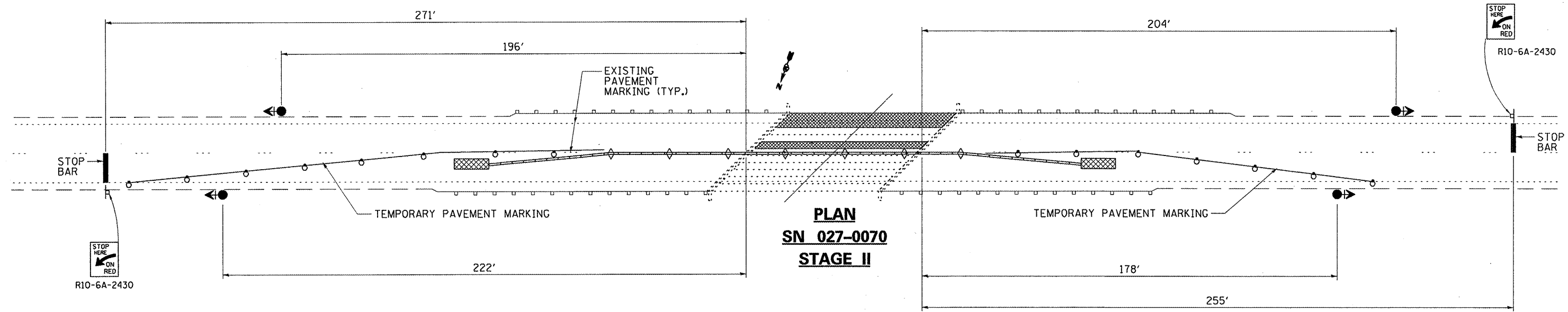
**CROSS SECTION LOOKING WEST**

\*TRAFFIC CONTROL DRUMS SHALL REMAIN IN PLACE DURING STAGE I CONSTRUCTION

**SYMBOLS**

- WORK AREA
- SIGN
- TYPE III BARRICADE
- TRAFFIC SIGNAL WITH BACKPLATES
- DRUM WITH STEADY BURNING BI-DIRECTIONAL LIGHT
- TEMPORARY CONCRETE BARRIER
- TEMPORARY IMPACT ATTENUATOR
- CRYSTAL, BI-DIRECTIONAL BARRIER WALL/GUARDRAIL MARKER

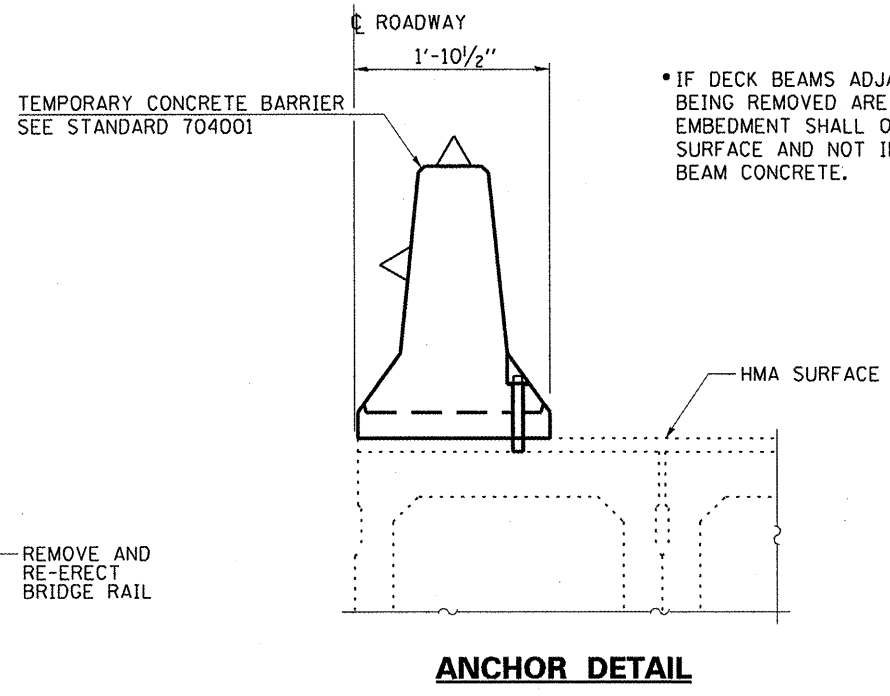
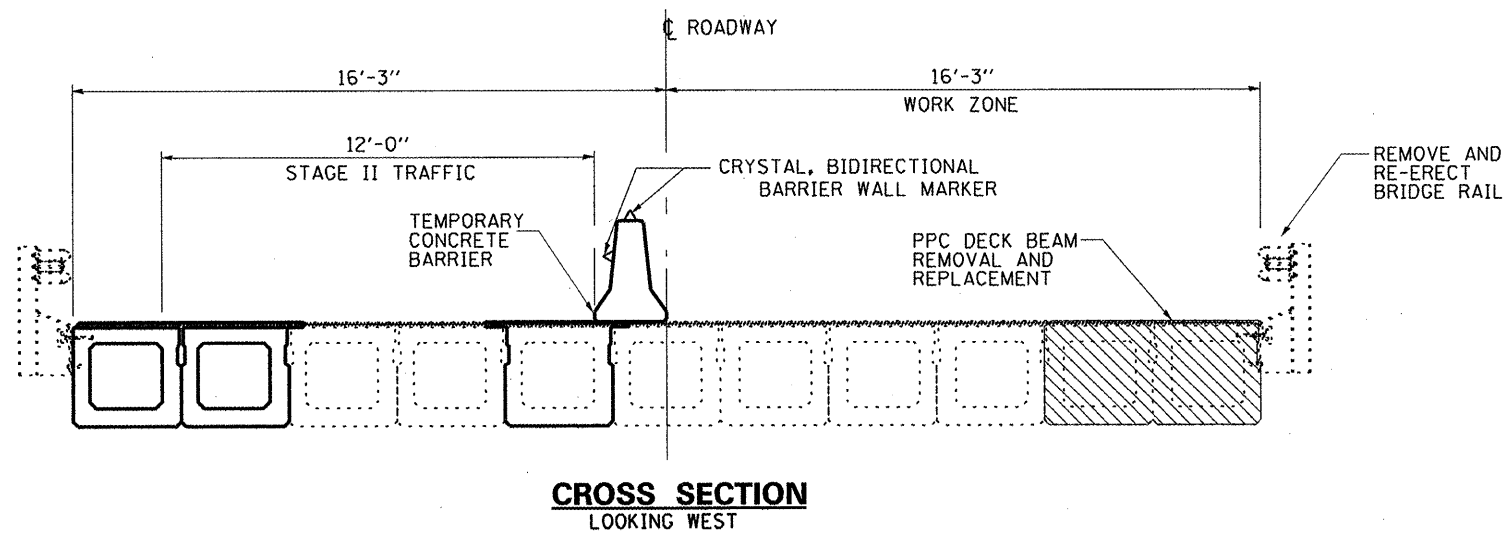
NOTE: SEE TRAFFIC CONTROL AND PROTECTION STANDARD 701321 FOR DETAILS NOT SHOWN



**SYMBOLS**

- WORK AREA
- SIGN
- TYPE III BARRICADE
- TRAFFIC SIGNAL WITH BACKPLATES
- DRUM WITH STEADY BURNING BI-DIRECTIONAL LIGHT
- TEMPORARY CONCRETE BARRIER
- TEMPORARY IMPACT ATTENUATOR
- CRYSTAL, BI-DIRECTIONAL BARRIER WALL/GUARDRAIL MARKER

- ① TYPE III BARRICADE TO BE PLACED WHEN NO WORK IS BEING PERFORMED.
- ② BARRIER WALL/GUARDRAIL MARKERS AT 25' CTS. SEE STANDARDS 635011 AND 704001



• IF DECK BEAMS ADJACENT TO THE DECK BEAM BEING REMOVED ARE TO REMAIN IN PLACE, EMBEDMENT SHALL ONLY BE INTO WEARING SURFACE AND NOT INTO EXISTING DECK BEAM CONCRETE.

**GENERAL NOTES**

THIS DETAIL SHEET SHALL BE USED WHERE, AT ANY TIME TRAFFIC CONTROL AND PROTECTION, STANDARD, 701321 AND 704001 ARE SPECIFIED.

TEMPORARY PAVEMENT MARKINGS WHEN SHOWN ON TRAFFIC CONTROL AND PROTECTION STANDARDS OR PLAN DETAILS, SHALL BE PAID FOR ACCORDING TO ARTICLE 703.07 OF THE STANDARD SPECIFICATIONS.

TEMPORARY PAVEMENT MARKING REMOVAL SHALL NOT BE PAID FOR SEPARATELY BUT SHALL BE INCLUDED IN THE COST OF THE STANDARD OR DETAILS REQUIRING TEMPORARY PAVEMENT MARKING.

NOTE: SEE TRAFFIC CONTROL AND PROTECTION STANDARD 701321 FOR DETAILS NOT SHOWN

FILE NAME =	USER NAME = potelyj	DESIGNED - RON WOODSHANK	REVISED -	<b>STATE OF ILLINOIS DEPARTMENT OF TRANSPORTATION</b>	<b>TRAFFIC CONTROL DETAILS STAGE II</b>	F.A.P. RTE.	SECTION	COUNTY	TOTAL SHEETS	SHEET NO.
ct:\pw_work\p\dot\potelyj\0257632\036626-sht-details.DGN	26-sht-details.DGN	DRAWN - RON WOODSHANK	REVISED -			71	(115-BR)	FORD	11	6
PLOT SCALE = 100.0130 / IN.		CHECKED -	REVISED -			CONTRACT NO. 66B26				
PLOT DATE = Feb 25, 2011 - 07:27:06 AM		DATE -	REVISED -			ILLINOIS FED. AID PROJECT				

**GENERAL NOTES**

All structural steel shall conform to AASHTO Classification M-270 Gr. 36, unless otherwise noted.

Plan dimensions and details relative to existing plans are subject to nominal construction variations. The Contractor shall field verify existing dimensions and details affecting new construction and make necessary approved adjustments prior to construction or ordering of materials. Such variations shall not be cause for additional compensation for a change in scope of the work, however, the Contractor will be paid for the quantity actually furnished at the unit price bid for the work.

The contractor is advised that the existing PPC Deck Beams are in a deteriorated condition with reduced load carrying capacity. It is the contractors responsibility to account for the condition of the beams when developing construction procedures.

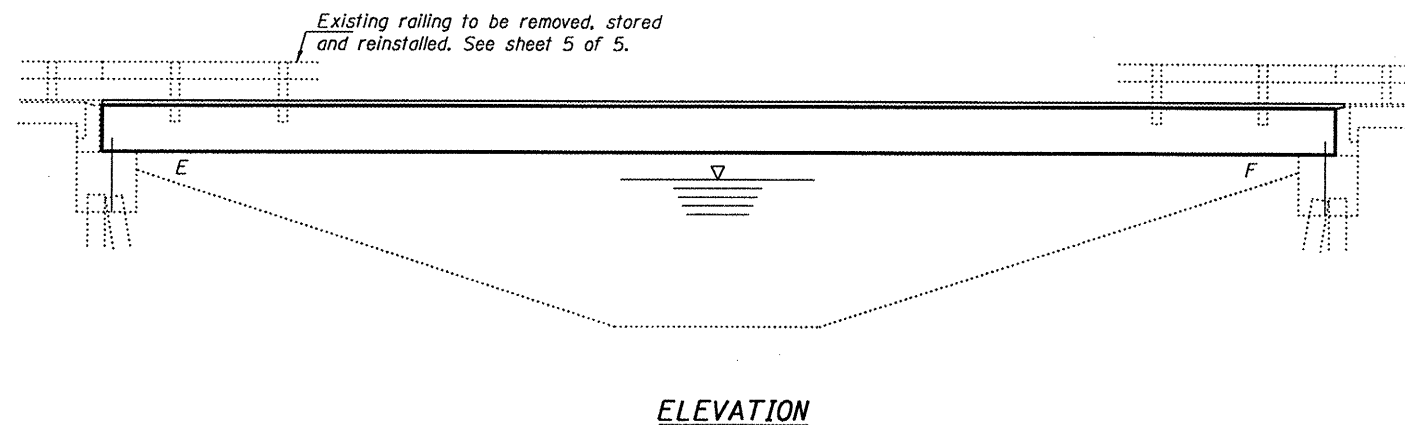
If the contractor's procedure for existing beam removal or placement of new beams involves placement of cranes or other heavy equipment on the bridge, a detailed procedure shall be submitted to the Engineer for approval. The procedure shall include calculations, prepared and sealed by an Illinois Licensed Structural Engineer, verifying that the equipment and procedure used will not overstress the new or existing beams. To distribute load to multiple beams and protect the existing surface, in all cases a double layer mat of heavy timbers shall be used at all times under crane tracks or wheels and any outriggers in the down position. If necessary, shims shall be used under the crane mat to ensure uniform contact with the underlying beams. If heavy equipment will be placed on new PPC deck beams, the following shall be done prior to placement of the timber mats: placement and tightening of transverse tie assemblies, grouting and curing the dowel rods 24 hours minimum and grouting and curing the shear keys.

Any damage done to the bridge during beam removal shall be repaired by the Contractor. Cost to be included in the cost of Removal of Existing PPC Deck Beams.

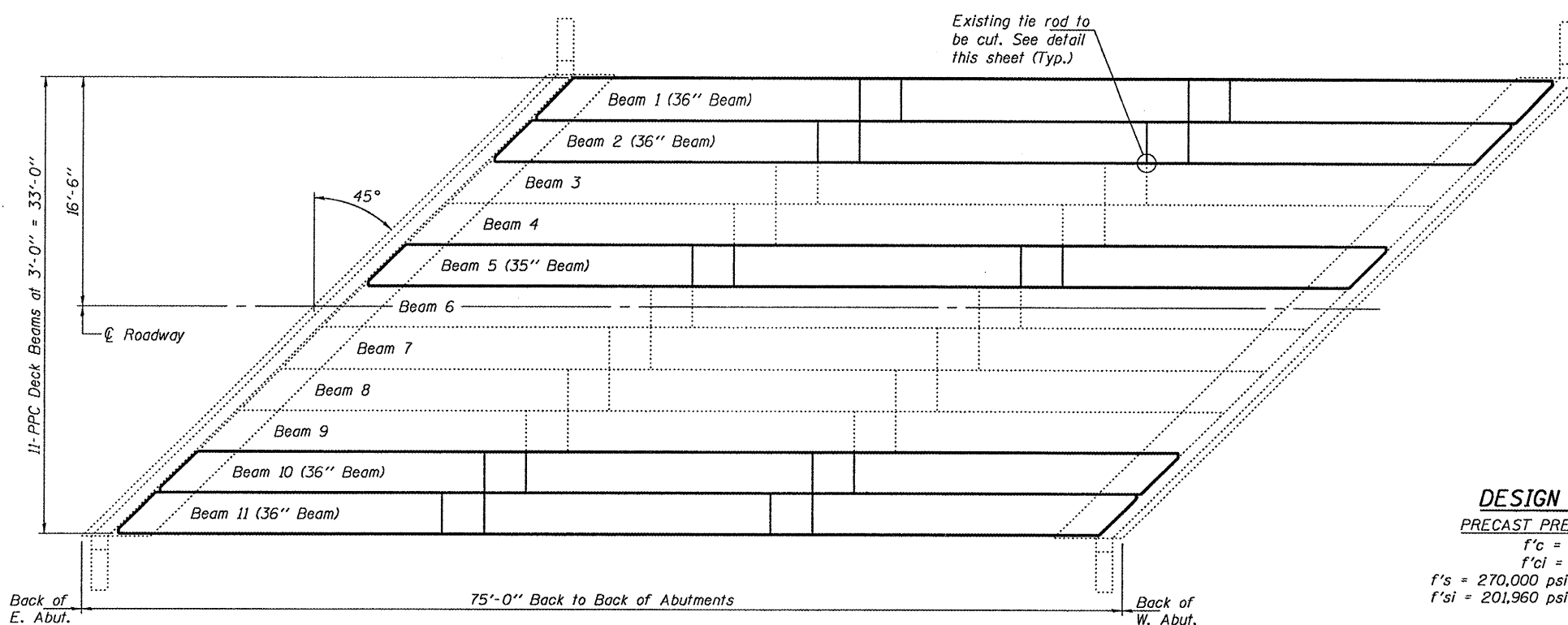
The top surface of the beams shall be finished according to the IDOT Manual for Fabrication of Precast Prestressed Concrete Products.

Temporary concrete barrier shall only be anchored into the overlay and not into the PPC Deck Beams.

All structural steel shall be shop painted with the inorganic zinc rich primer per AASHTO M300, Type 1. Cost included with PPC Deck Beams.



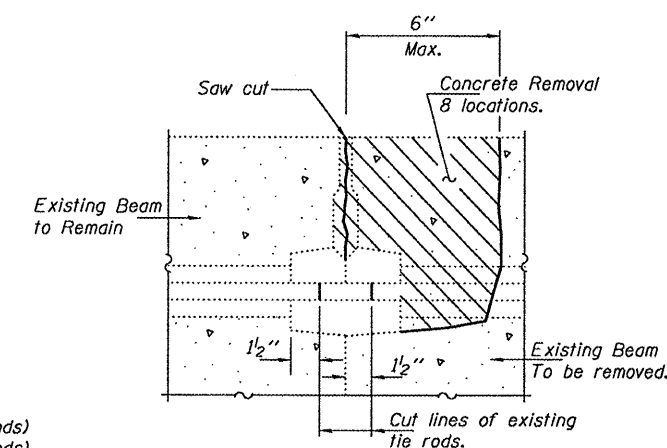
**ELEVATION**



**PLAN**

**DESIGN STRESSES**

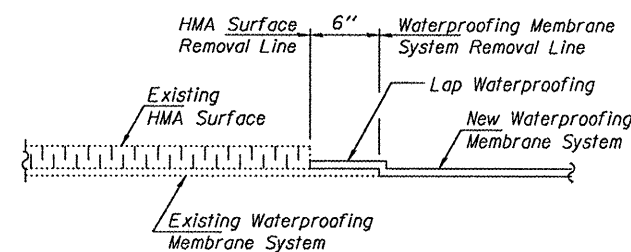
PRECAST PRESTRESSED UNITS  
 $f'_c = 6,000$  psi  
 $f'_{ci} = 5,000$  psi  
 $f'_s = 270,000$  psi ( $\frac{1}{2}$ "  $\phi$  low lax strands)  
 $f'_{si} = 201,960$  psi ( $\frac{1}{2}$ "  $\phi$  low lax strands)



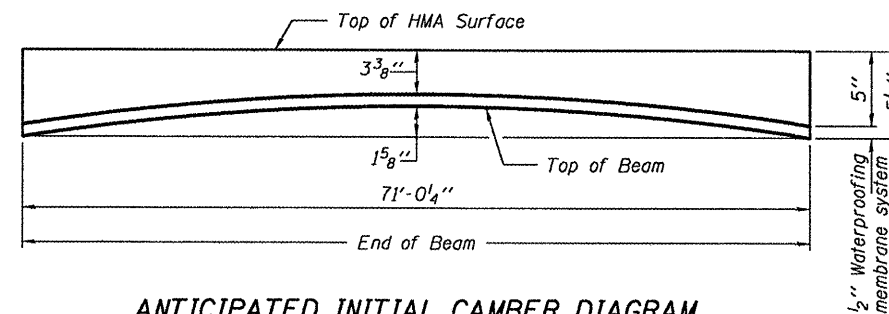
**BEAM REMOVAL DETAIL AT TRANSVERSE TIES**

**TOTAL BILL OF MATERIAL**

ITEM	UNIT	QUANTITY
Removal of Existing PPC Deck Beams	Sq. Ft.	1065.3
Precast Prestressed Concrete Deck Beams (33" Depth)	Sq. Ft.	1059.4
Hot-Mix Asphalt Surface Removal (Special)	Sq. Yd.	16.7
HMA Surface Course Mix "C" N50	Tons	31.8
PC Mortar Fairing Course	Foot	426
Waterproofing Membrane System	Sq. Yd.	135.1
Asbestos Bearing Pad Removal	Each	5
Removing and Re-erecting Existing Railing	Foot	142



**WATERPROOFING TREATMENT**



**ANTICIPATED INITIAL CAMBER DIAGRAM**



DESIGNED - <i>David Carl Puzey</i>	EXAMINED - <i>John F. J...</i>	DATE - MARCH 15, 2011
CHECKED - <i>Kyle M. Steffen</i>	PASSED - <i>John F. J...</i>	
CHECKED - <i>ISL 4TH</i>		

STATE OF ILLINOIS  
DEPARTMENT OF TRANSPORTATION

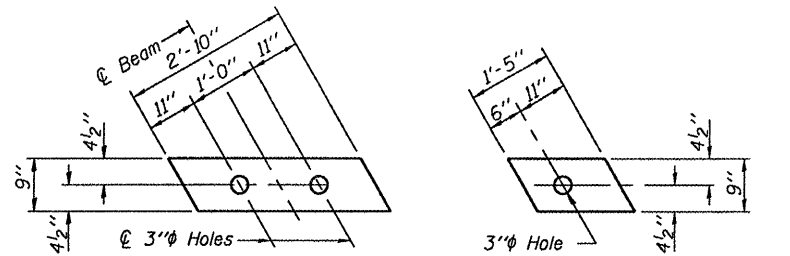
GENERAL PLAN & ELEVATION  
IL 54 OVER DRAINAGE DITCH  
SN 027-0070

F.A.P. RTE. 71	SECTION (115-BR)I	COUNTY FORD	TOTAL SHEETS 11	SHEET NO. 7
CONTRACT NO. 66B26			ILLINOIS FED. AID PROJECT	

SHEET NO. 1 OF 5 SHEETS







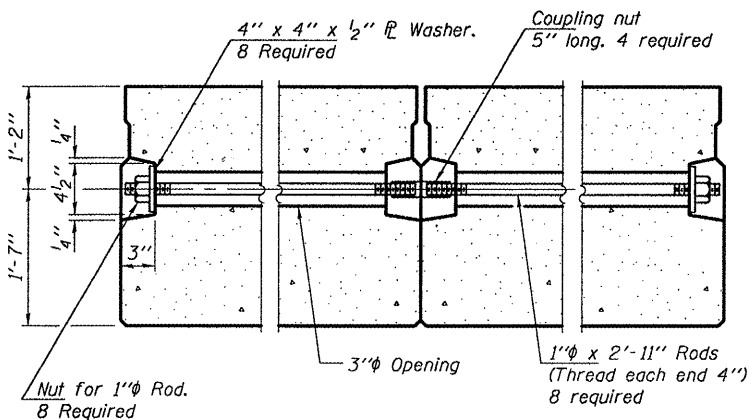
**FABRIC BEARING PAD**

**FABRIC ADJUSTING SHIM**

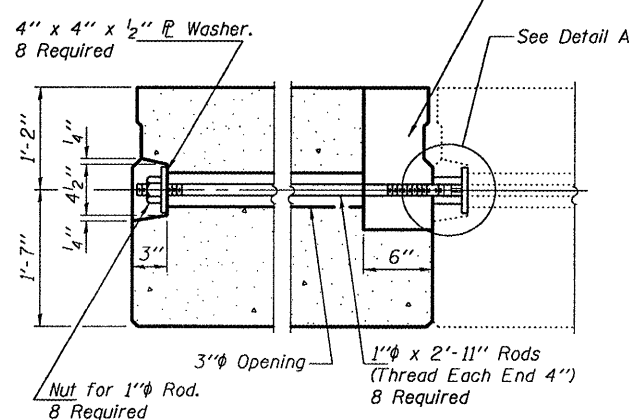
**FIXED**

Note: Omit holes when using expansion bearings.

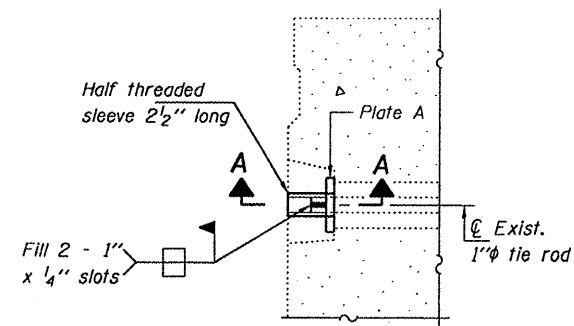
6" x 6" x 16 1/2" Blockout to be filled with non-shrink grout as specified in the special provision Concrete Deck Beams (Min. compressive strength at 7 days = 6,000 psi) after beams have been installed. Cost shall be included in the cost of Precast Prestressed Concrete Deck Beams (33" Depth).



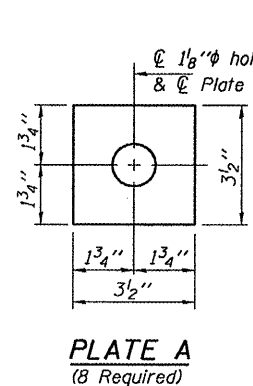
**TYPICAL TRANSVERSE TIE ASSEMBLY FOR NEW BEAM ADJACENT TO NEW BEAM**



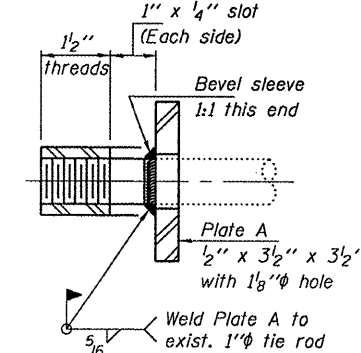
**TYPICAL TRANSVERSE TIE ASSEMBLY FOR NEW BEAM ADJACENT TO EXISTING BEAM**



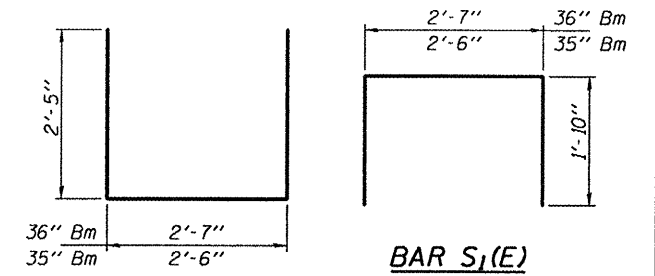
**DETAIL A**



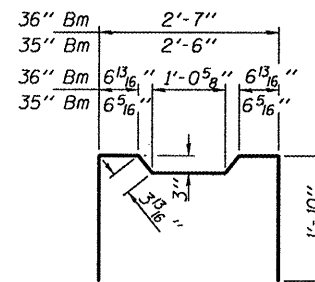
**PLATE A (8 Required)**



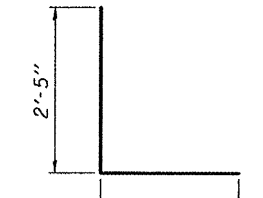
**SECTION A-A (8 Required)**



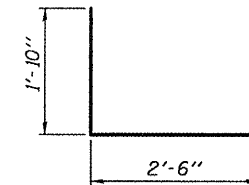
**BAR S(E)**



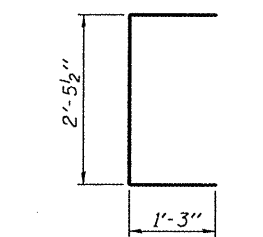
**BAR S2(E)**



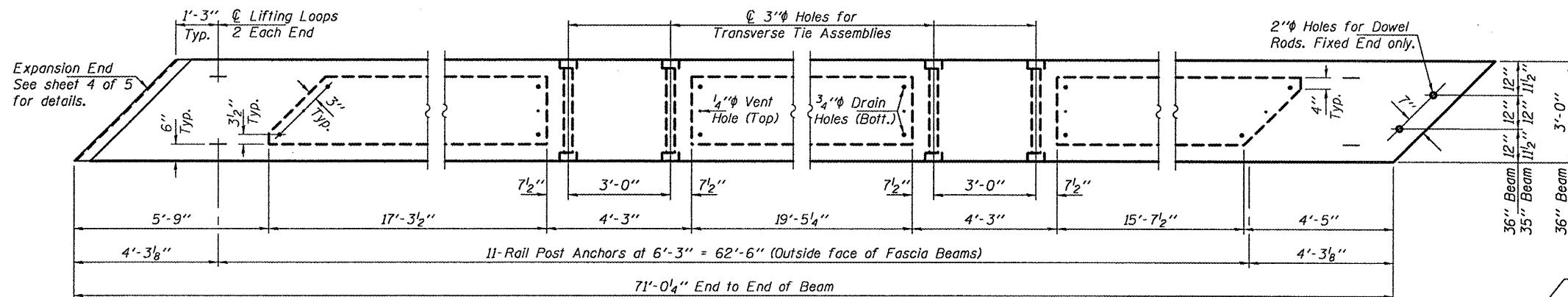
**BAR S3(E)**



**BAR S4(E)**



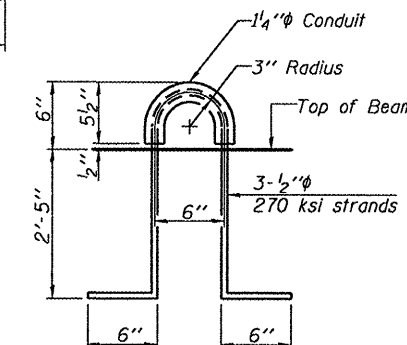
**BAR U(E)**



**BEAM PLAN**

**NOTES**

Prestressing steel shall be uncoated high strength, low relaxation 7-wire strand, Grade 270. The nominal diameter shall be 1/2" and the nominal cross-sectional area shall be 0.153 sq. in. The 1" rods in the transverse tie assembly shall be tightened to a snug fit and the threads set. Pockets on exterior faces of bridge shall be filled with grout after transverse tie assembly is in place. Reinforcement bars shall conform to ASTM A 706, Grade 60. (See Special Provisions). Two 3/8" fabric adjusting shims of the dimensions shown shall be provided for each bearing pad location. A minimum 2 1/2" lifting pin shall be used to engage the lifting loops during handling. Corrosion Inhibitor, per Article 1020.05(b)(12) and 1021.06 of the Standard Specifications, shall be used in the concrete for precast prestressed concrete deck beams. Compressive strength of prestressed concrete, f'c, shall be 6000 psi. Compressive strength of prestressed concrete at release, f'ci, shall be 5000 psi.



**LIFTING LOOP DETAIL**

**BILL OF MATERIAL**

Precast Prestressed Conc. Deck Bms. (33" depth)	Sq. Ft.	1059.4
---	---------	--------

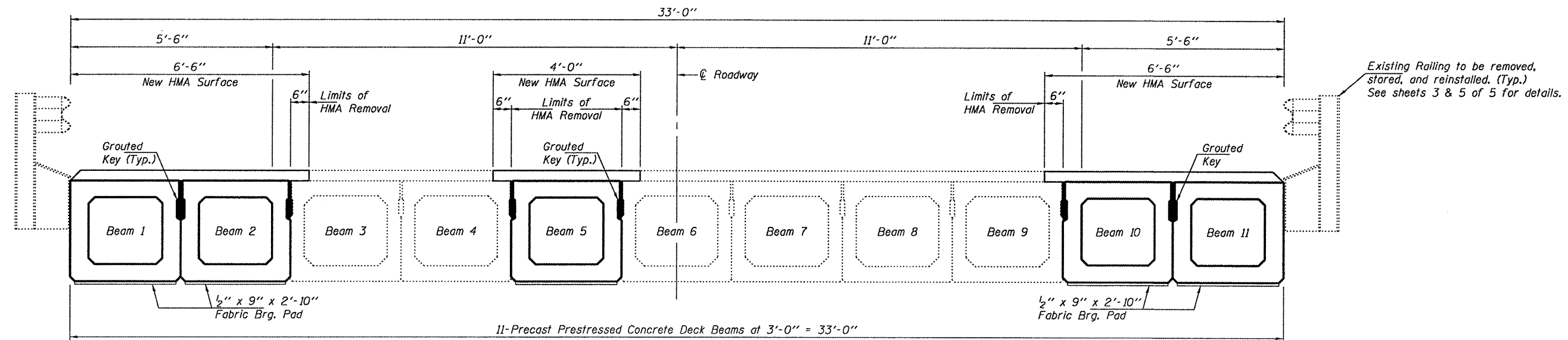
DESIGNED - IJL	EXAMINED - <i>James F. J...</i>
CHECKED - ATH	ACTING ENGINEER OF STRUCTURAL SERVICES
DRAWN - Kyle M. Steffen	PASSED - <i>Carl...</i>
CHECKED - IJL ATH	ACTING ENGINEER OF BRIDGES AND STRUCTURES

DATE - MARCH 15, 2011	STATE OF ILLINOIS DEPARTMENT OF TRANSPORTATION
-----------------------	--

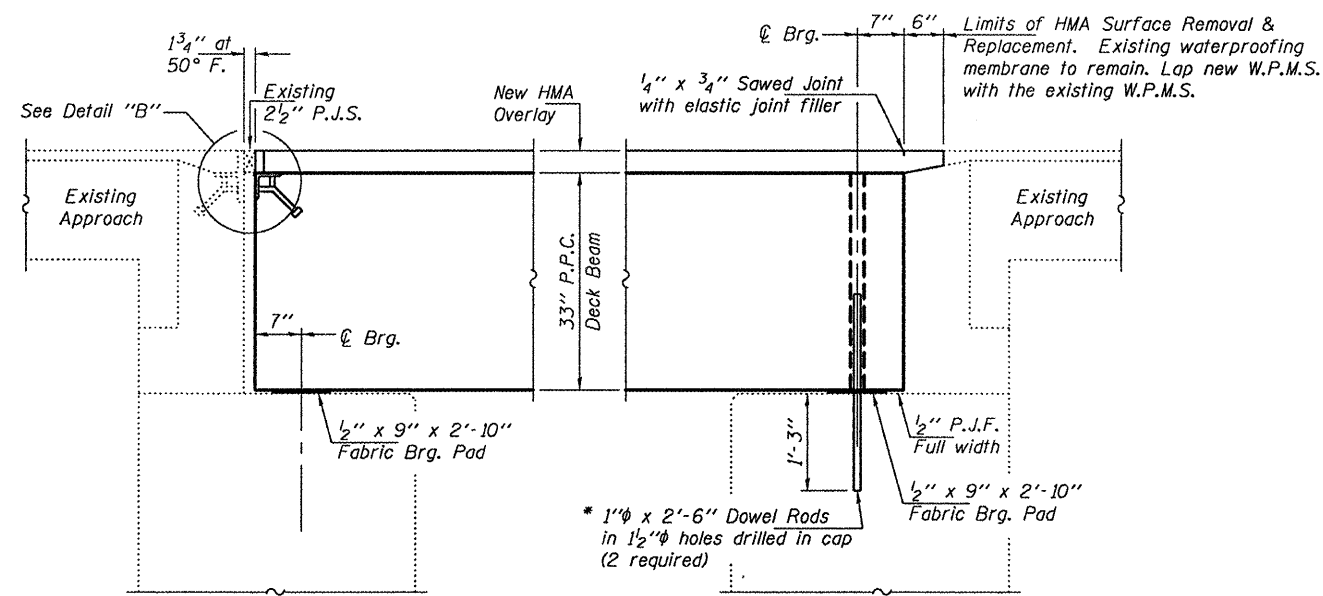
STATE OF ILLINOIS DEPARTMENT OF TRANSPORTATION
--

P.P.C. DECK BEAM DETAILS SN 027-0070	SHEET NO. 3 OF 5 SHEETS
--------------------------------------	-------------------------

F.A.P. RTE. 71	SECTION (115-BR1)	COUNTY FORD	TOTAL SHEETS 11	SHEET NO. 9
CONTRACT NO. 66B26				
ILLINOIS FED. AID PROJECT				

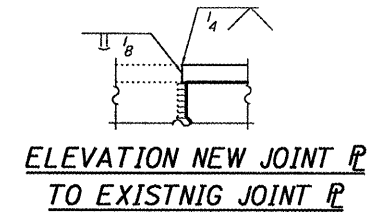


**CROSS-SECTION**  
(Looking West)

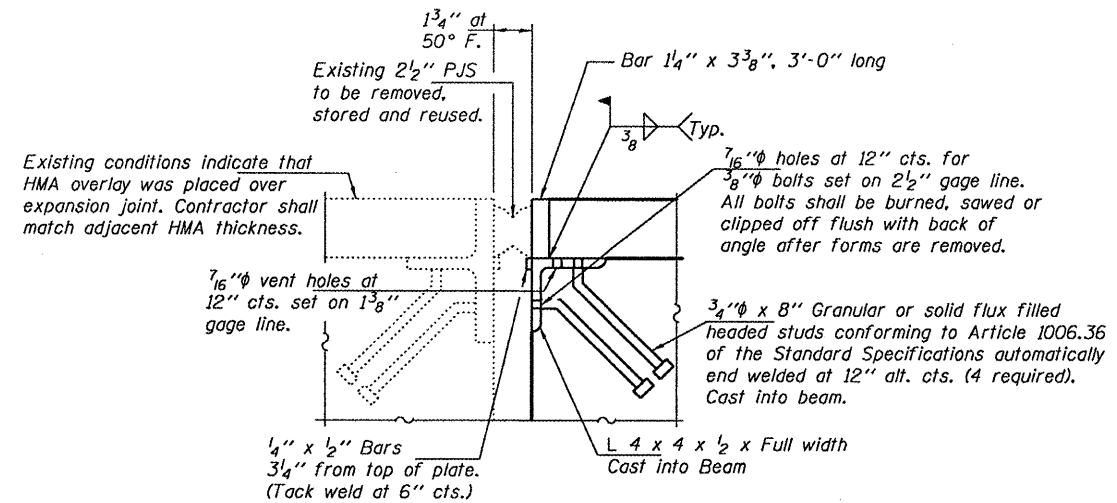


**SECTION THRU EAST ABUTMENT**  
(Dimensions are at Rt. L's)

**SECTION THRU WEST ABUTMENT**  
(Dimensions are at Rt. L's)



**ELEVATION NEW JOINT P TO EXISTING JOINT P**



**DETAIL "B"**

\* Existing dowel rods are to be burned off, ground flush, and sealed with epoxy prior to placement of new beams. Cost included in Removal of Existing PPC Deck Beams. After beams have been erected holes shall be drilled into cap and dowel rods placed. Dowel holes shall be filled with non-shrink grout to top of beam and allowed to cure a minimum of 24 hours prior to grouting the shear keys.

DESIGNED - IJL	EXAMINED	DATE - MARCH 15, 2011
CHECKED - ATH	ACTING ENGINEER OF STRUCTURAL SERVICES	
DRAWN - Kyle M. Steffen	PASSED	
CHECKED - IJL ATH	ACTING ENGINEER OF BRIDGES AND STRUCTURES	

**STATE OF ILLINOIS**  
**DEPARTMENT OF TRANSPORTATION**

**REPAIR DETAILS**  
**SN 027-0070**

F.A.P. RTE.	SECTION	COUNTY	TOTAL SHEETS	SHEET NO.
71	(115-BR1)	FORD	11	10
CONTRACT NO. 66B26				
ILLINOIS FED. AID PROJECT				

SHEET NO. 4 OF 5 SHEETS

