

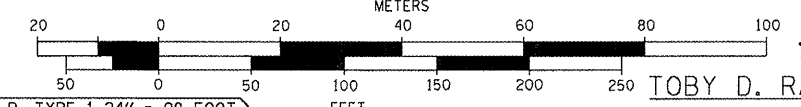
SS1 PIPE UNDERDRAINS 4" = 54 FOOT

SS2 STA. 755+87  
PIPE UNDERDRAINS 4" (SPECIAL) = 36 FOOT  
CONCRETE HEADWALLS FOR PIPE DRAINS = 1 EACH (43' RT.)  
INV = 520.50

STA. 753+60, 47' LT.  
PIPE CULVERTS, CLASS D, TYPE 1 18" = 36 FOOT  
END SECTIONS 18" = 2 EACH  
USFL = 520.30  
DSFL = 516.50

- ① TRAFFIC BARRIER TERMINAL, TYPE (SPECIAL) TANGENT
  - ② STEEL PLATE BEAM GUARDRAIL, TYPE A, 6 FOOT POSTS
  - ③ TRAFFIC BARRIER TERMINAL, TYPE 6
- SEE SCHEDULE OF QUANTITIES FOR STATION LIMITS

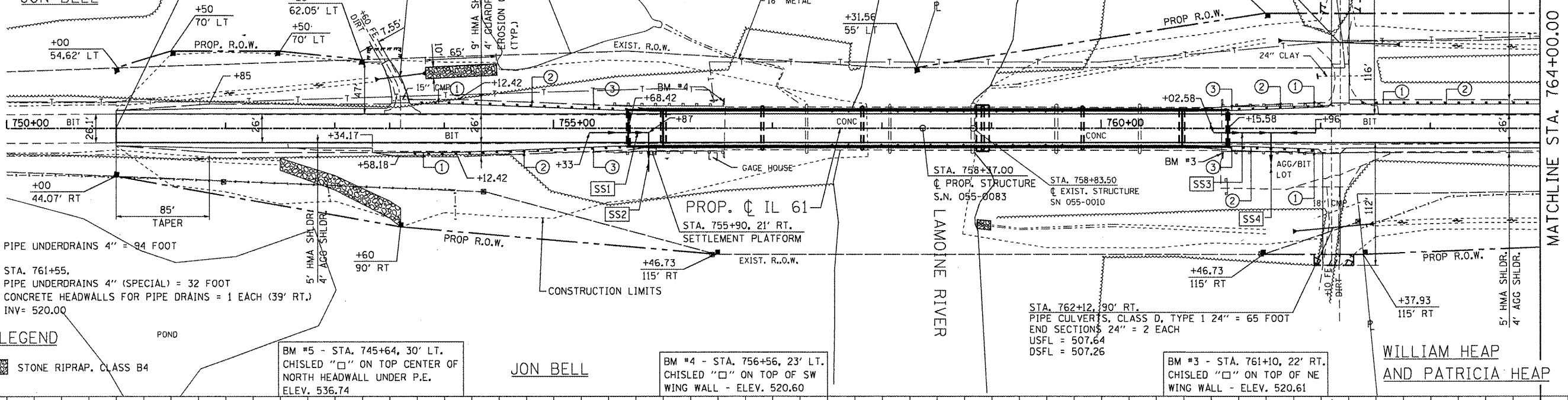
GRAPHIC SCALE



TOBY D. RAYMOND AND LINDA L. RAYMOND

JON BELL

BEGIN IMPROVEMENT SECTION 105BR-1 STA. 751+00.00



SS3 PIPE UNDERDRAINS 4" = 94 FOOT

SS4 STA. 761+55,  
PIPE UNDERDRAINS 4" (SPECIAL) = 32 FOOT  
CONCRETE HEADWALLS FOR PIPE DRAINS = 1 EACH (39' RT.)  
INV = 520.00

STA. 758+37.00  
PROP. STRUCTURE  
S.N. 055-0083

STA. 758+83.50  
EXIST. STRUCTURE  
S.N. 055-0010

STA. 762+12, 90' RT.  
PIPE CULVERTS, CLASS D, TYPE 1 24" = 65 FOOT  
END SECTIONS 24" = 2 EACH  
USFL = 507.64  
DSFL = 507.26

BM #3 - STA. 761+10, 22' RT.  
CHISLED "□" ON TOP OF NE WING WALL - ELEV. 520.61

WILLIAM HEAP AND PATRICIA HEAP

MATCHLINE STA. 764+00.00

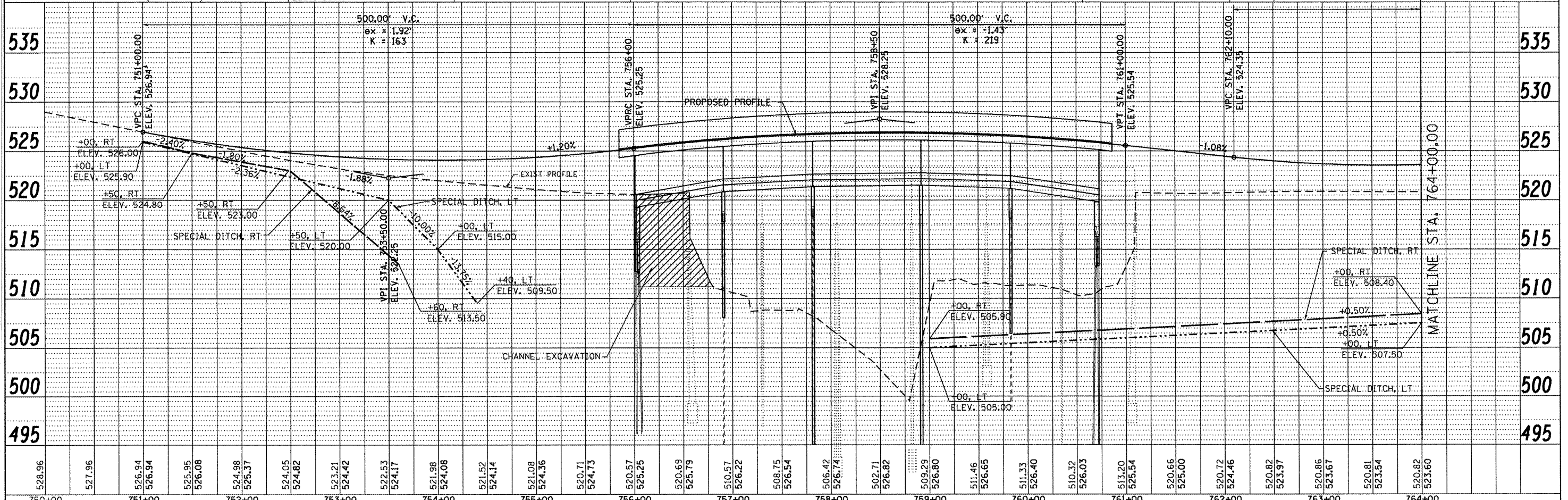
LEGEND

STONE RIPRAP, CLASS B4

BM #5 - STA. 745+64, 30' LT.  
CHISLED "□" ON TOP CENTER OF NORTH HEADWALL UNDER P.E.  
ELEV. 536.74

JON BELL

BM #4 - STA. 756+56, 23' LT.  
CHISLED "□" ON TOP OF SW WING WALL - ELEV. 520.60



USER NAME = gjameson	DESIGNED -	REVISED -
FILE NAME = D468482-shr-plan.dwg	CHECKED -	REVISED -
PLOT DATE = 12/21/2019	DRAWN -	REVISED -
PLOT TIME = 10:27:33 AM	CHECKED -	REVISED -

**WHKS & CO.**  
ENGINEERING

7018 KINGSMILL CT.,  
SPRINGFIELD, IL  
(217) 483-9457  
DESIGN FIRM #184001036

STATE OF ILLINOIS  
DEPARTMENT OF TRANSPORTATION

PROPOSED PLAN AND PROFILE SHEET

SCALE: 1" = 50' SHEET NO. 1 OF 2 SHEETS STA. 751+00.00 TO STA. 764+00.00

F.A. RTE. 542	SECTION 105BR-1	COUNTY MCDONOUGH	TOTAL SHEETS 117	SHEET NO. 23
CONTRACT NO. 68482			ILLINOIS FED. AID PROJECT	