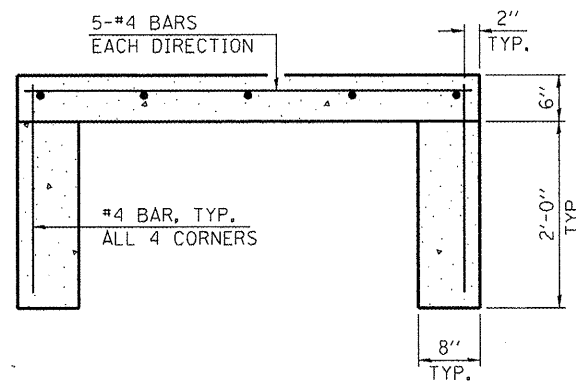


PLAN



SECTION A-A

NOTES:

1. LOCATION OF USGS STREAM GAGE HOUSE PAD TO BE DETERMINED DURING CONSTRUCTION. SEE SPECIAL PROVISION.
2. REINFORCEMENT BARS SHALL BE EPOXY COATED.
3. CONCRETE AND REINFORCEMENT FOR GAGE HOUSE PAD SHALL BE PAID FOR AS "CONCRETE STRUCTURES" AND "REINFORCEMENT BARS, EPOXY COATED".
4. EXCAVATION TO PLACE GAGE HOUSE PAD SHALL BE ACCORDING TO SECTION 502 OF THE STANDARD SPECIFICATIONS AND THE COST SHALL BE INCLUDED WITH "CONCRETE STRUCTURES".
5. USGS STREAM GAGE HOUSE WILL BE ATTACHED TO THE CONCRETE PAD WITH 1/2" CONCRETE ANCHORS.

GAGE HOUSE PAD

USER NAME = gjameson
 PLOT SCALE = 2x8 1/2" / IN.
 PLOT DATE = 12/21/2010

DESIGNED - JAC	REVISED -
DRAWN - DLH	REVISED -
CHECKED - SDS	REVISED -
DATE -	REVISED -

WHKS & CO.
 ENGINEERING
 7018 KINGSMILL CT.
 SPRINGFIELD, IL
 (217) 483-9457
 DESIGN FIRM #184001036

STATE OF ILLINOIS
DEPARTMENT OF TRANSPORTATION

USGS STREAM GAGE HOUSE PAD DETAIL	
SCALE: NTS	SHEET NO. OF SHEETS STA. TO STA.

F.A.P. RTE.	SECTION	COUNTY	TOTAL SHEETS	SHEET NO.
542	105BR-1	MCDONOUGH	117	28
CONTRACT NO. 68482				
ILLINOIS FED. AID PROJECT				