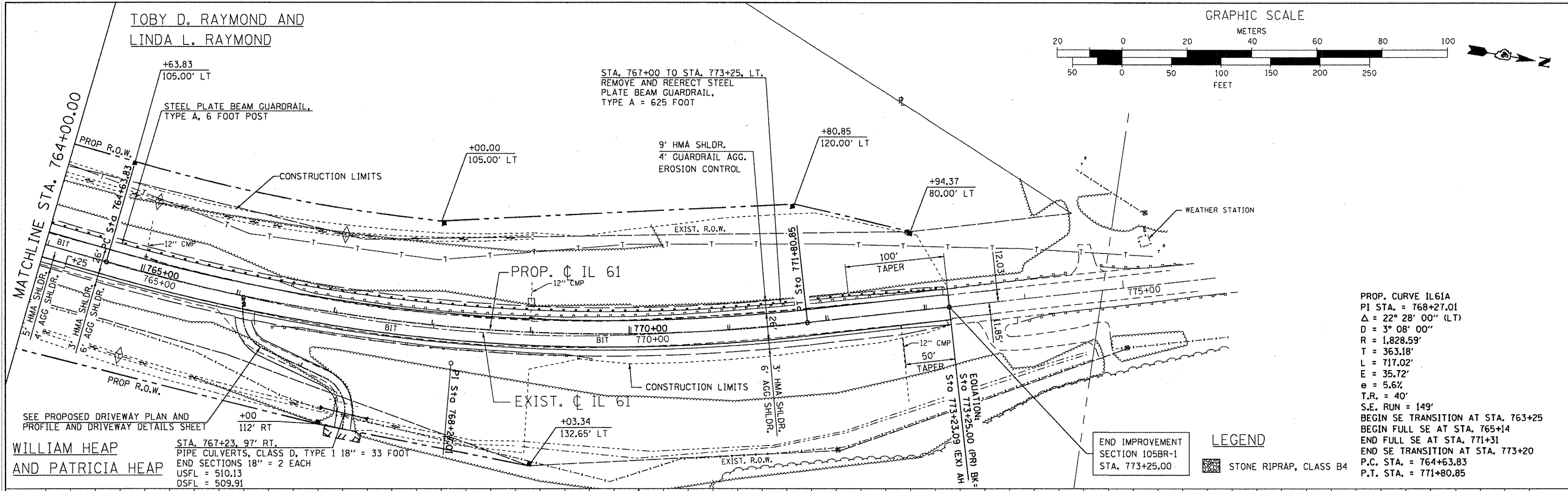
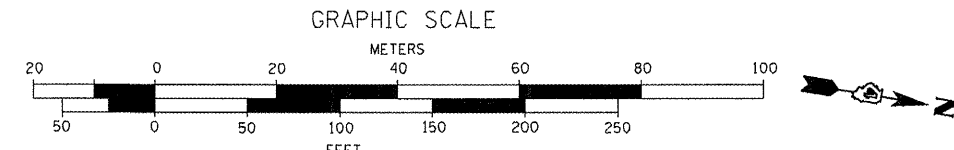


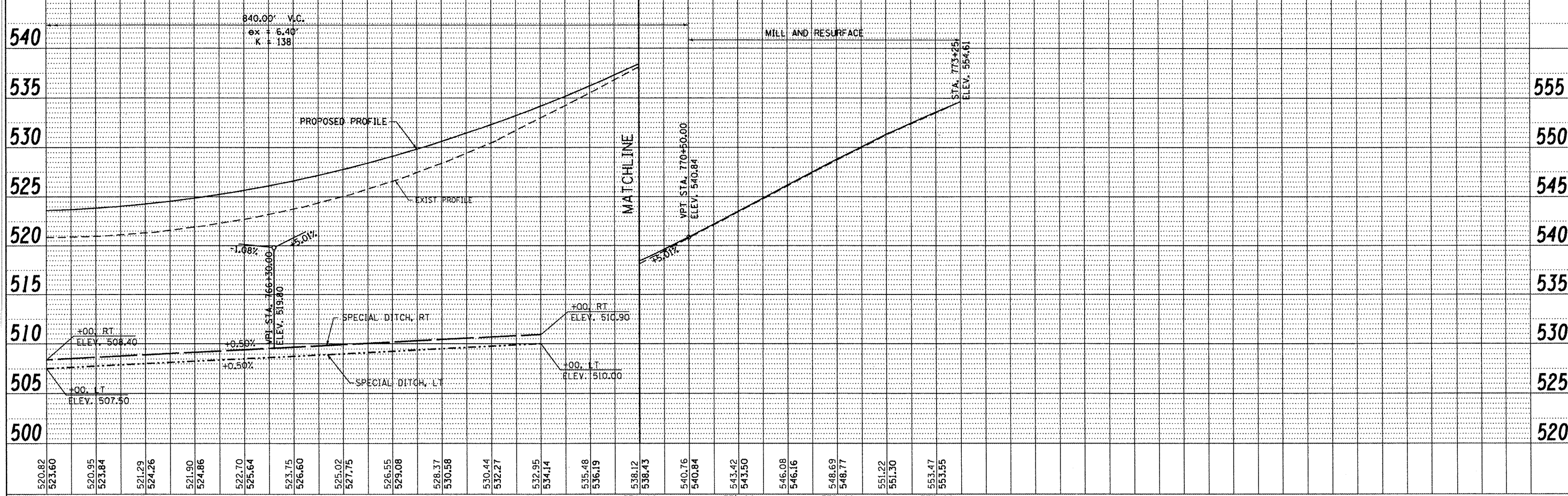
TOBY D. RAYMOND AND  
LINDA L. RAYMOND



PROP. CURVE IL61A  
PI STA. = 768+27.01  
 $\Delta$  = 22° 28' 00" (LT)  
D = 3° 08' 00"  
R = 1,828.59'  
T = 363.18'  
L = 717.02'  
E = 35.72'  
e = 5.6%  
T.R. = 40'  
S.E. RUN = 149'  
BEGIN SE TRANSITION AT STA. 763+25  
BEGIN FULL SE AT STA. 765+14  
END FULL SE AT STA. 771+31  
END SE TRANSITION AT STA. 773+20  
P.C. STA. = 764+63.83  
P.T. STA. = 771+80.85

WILLIAM HEAP  
AND PATRICIA HEAP

STA. 767+23.97' RT.  
PIPE CULVERTS, CLASS D, TYPE 1 18" = 33 FOOT  
END SECTIONS 18" = 2 EACH  
USFL = 510.13  
DSFL = 509.91



520.82 523.60	520.95 523.84	521.29 524.26	521.90 524.86	522.70 525.64	523.75 526.60	525.02 527.75	526.55 529.08	528.37 530.58	530.44 532.27	532.95 534.14	535.48 536.19	538.12 538.43	540.76 540.84	543.42 543.50	546.08 546.16	548.69 548.77	551.22 551.30	553.47 553.55
------------------	------------------	------------------	------------------	------------------	------------------	------------------	------------------	------------------	------------------	------------------	------------------	------------------	------------------	------------------	------------------	------------------	------------------	------------------

**WHKS & CO.**  
ENGINEERING

7018 KINGSMILL CT.,  
SPRINGFIELD, IL  
(217) 483-9457  
DESIGN FIRM #184001038

**STATE OF ILLINOIS**  
**DEPARTMENT OF TRANSPORTATION**

**PROPOSED PLAN AND PROFILE SHEET**

SCALE: 1" = 50' SHEET NO. 2 OF 2 SHEETS STA. 764+00.00 TO STA. 773+25.00

F.A. RTE. 542	SECTION 105BR-1	COUNTY McDONOUGH	TOTAL SHEETS 114	SHEET NO. 24
CONTRACT NO. 68482			ILLINOIS FED. AID PROJECT	