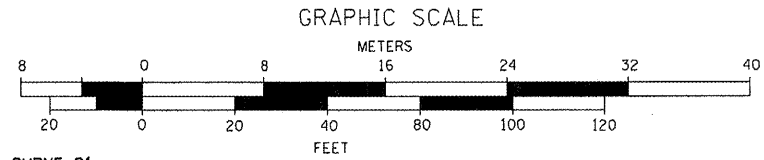
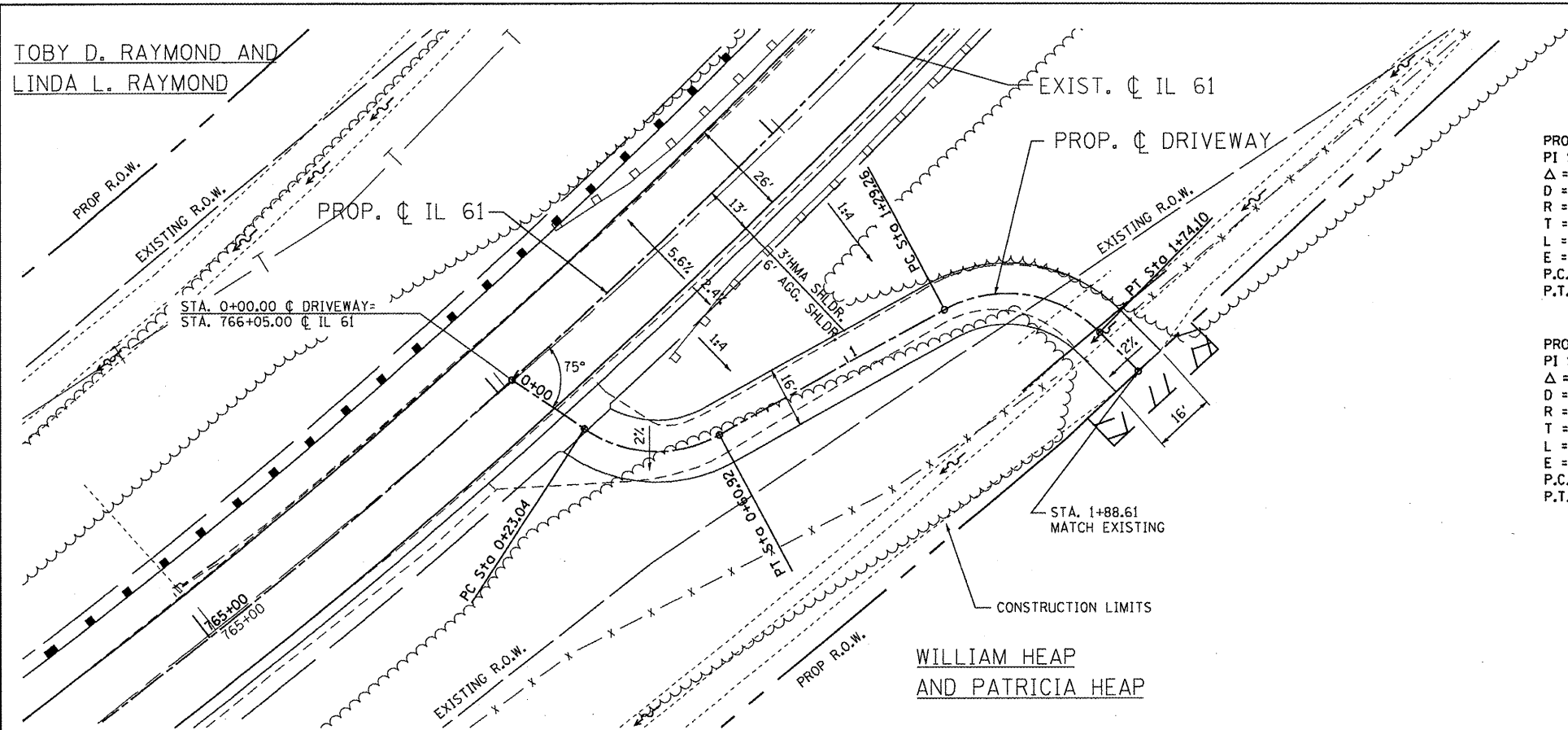
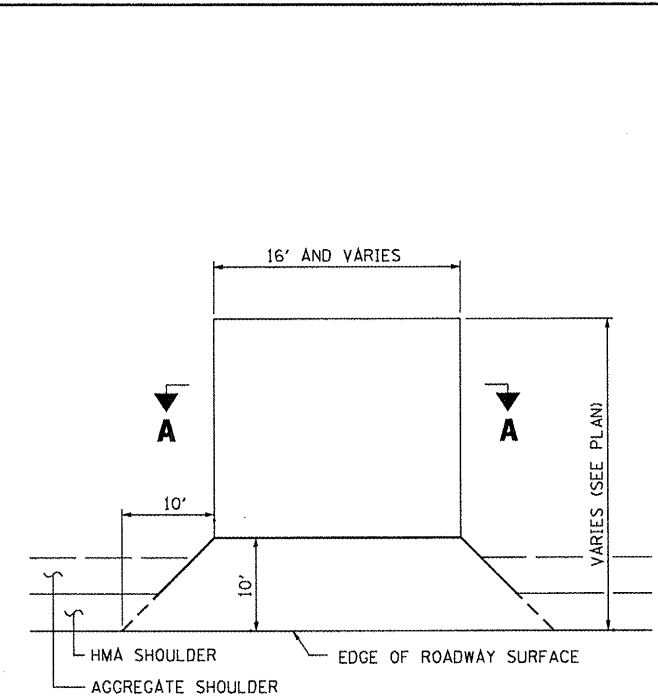


TOBY D. RAYMOND AND
LINDA L. RAYMOND



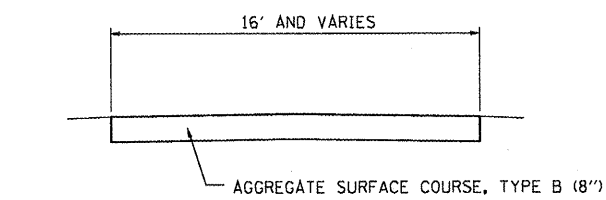
PROP. CURVE D1
PI STA. = 0+44.07
 $\Delta = 62^\circ 00' 23''$ (LT)
D = 163' 42' 08"
R = 35.00'
T = 21.03'
L = 37.88'
E = 5.83'
P.C. STA = 0+23.04
P.T. STA = 0+60.92

PROP. CURVE D2
PI STA. = 1+55.35
 $\Delta = 73^\circ 24' 50''$ (RT)
D = 163' 42' 08"
R = 35.00'
T = 26.09'
L = 44.85'
E = 8.66'
P.C. STA = 1+29.26
P.T. STA = 1+74.10

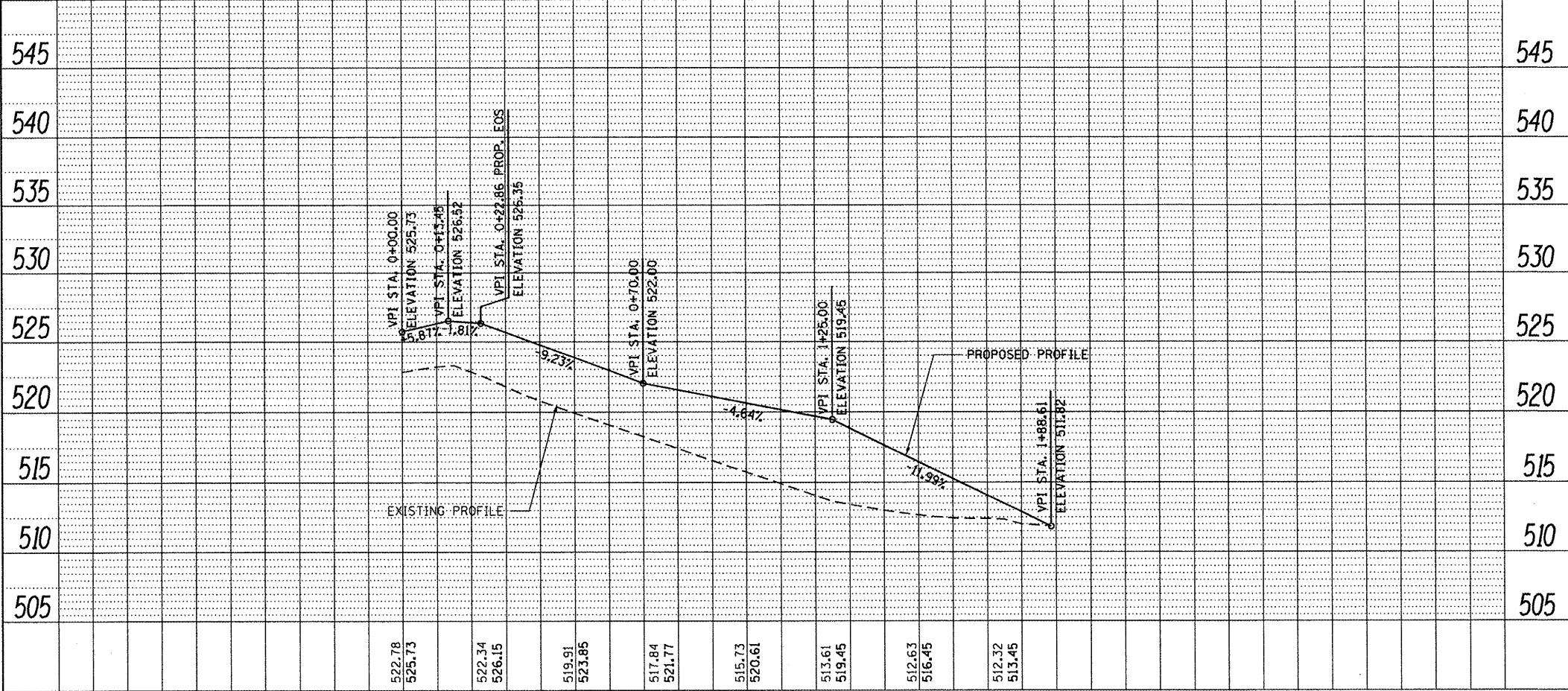


TYPICAL FIELD ENTRANCE PLAN

STA. 753+60.00, LT.
STA. 762+10.00, RT.
STA. 762+18.00, LT.
STA. 766+05.00 RT.



TYPICAL SECTION THRU ENTRANCE (A-A)



USER NAME = g_jameson	DESIGNED -	REVISED -
FILE NAME = D468482-shft-plan-D	CHECKED -	REVISED -
PLOT DATE = 12/21/2010	DRAWN -	REVISED -
PLOT TIME = 10:27:44 AM	CHECKED -	REVISED -

WHKS & CO.
ENGINEERING

7018 KINGSMILL CT.,
SPRINGFIELD, IL
(217) 483-9457
DESIGN FIRM #184001036

STATE OF ILLINOIS
DEPARTMENT OF TRANSPORTATION

**PROPOSED DRIVEWAY PLAN AND PROFILE
AND DRIVEWAY DETAIL SHEET**

SCALE: 1" = 20' SHEET NO. 1 OF 1 SHEETS STA. 0+00.00 TO STA. 1+88.61

F.A. RTE. 542	SECTION 105BR-1	COUNTY McDONOUGH	TOTAL SHEETS 117	SHEET NO. 25
CONTRACT NO. 68482				
ILLINOIS FED. AID PROJECT				