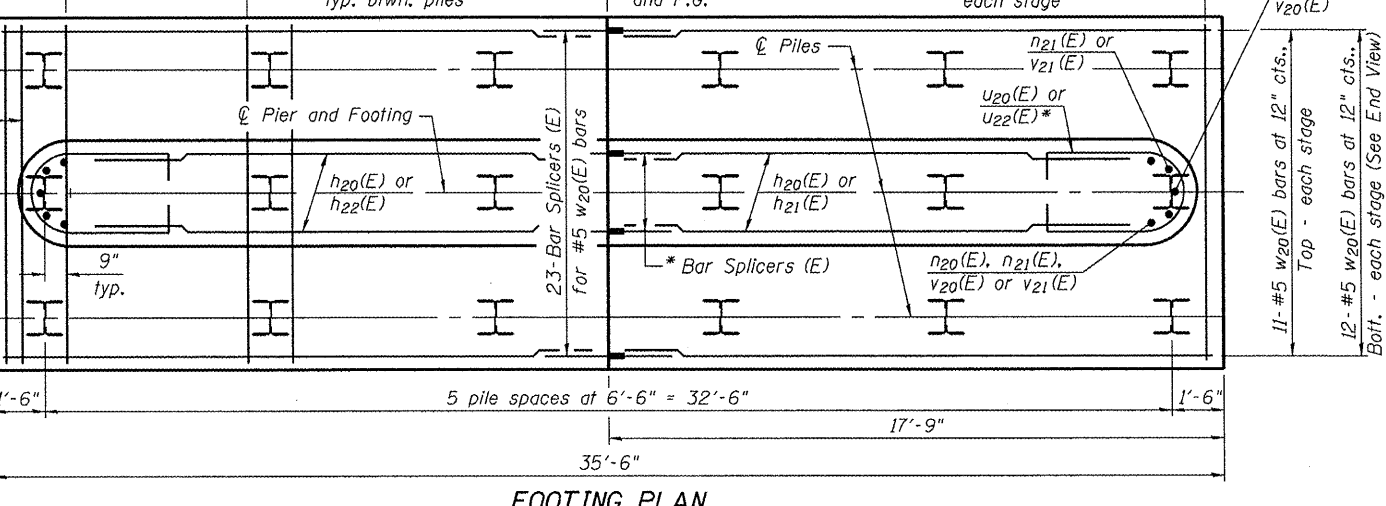


PILE DATA
 Type: HP 14x73 w/ Pile Shoes
 Nominal Required Bearing: 578 k
 Factored Resistance Available: 269 k
 Est. Length: 51'-0"
 No. Production Piles: 17
 No. Test Piles: 1

* Mechanical splices (E) shall be used as detailed in elevation view.
 ** Adjacent to the stage construction joint, provide 6 bars in Stage I and 5 bars in Stage II.



**PIER 2
BILL OF MATERIAL**

Bar	No.	Size	Length	Shape
h20(E)	84	#6	15'-4"	—
h21(E)	30	#6	13'-3"	—
h22(E)	30	#6	11'-0"	—
n20(E)	34	#9	8'-6"	U
n21(E)	36	#9	10'-6"	U
p20(E)	20	#6	15'-4"	—
s20(E)	32	#5	13'-7"	□
s21(E)	512	#5	3'-9"	L
s22(E)	168	#3	3'-5"	L
t20(E)	59	#7	9'-8"	—
t21(E)	38	#5	9'-8"	—
u20(E)	8	#6	13'-4"	U
u21(E)	42	#6	12'-8"	U
u22(E)	30	#6	10'-8"	U
v1(E)	30	#8	4'-2"	U
v20(E)	34	#9	24'-0"	—
v21(E)	36	#9	22'-0"	—
w20(E)	46	#5	17'-5"	—
Structure Excavation		Cu. Yd.	103	
Cofferdam Excavation		Cu. Yd.	352	
Cofferdam (Location 1)		Each	1	
Seal Coat Concrete		Cu. Yd.	61.5	
Concrete Structures		Cu. Yd.	145	
Reinforcement Bars, Epoxy Coated		Pound	18,060	
Furnishing Steel Piles HP 14x73		Foot	867	
Driving piles HP 14x73		Foot	867	
Test Piles Steel HP 14x73		Each	1	
Pile Shoes		Each	18	

Notes:
 Four steps monolithically with cap.
 For details of piles, see sheet 31 of 41.
 Seal coat designed for E.W.S. Elevation shown.
 The s21(E) and s22(E) cross-tie bars shall be placed so that the 90° hooked ends of two successive cross-ties alternate end for end.
 For details of Bar Splicers and Mechanical Splicers see sheet 32 of 41.
 Mechanical splices designated (E) shall be epoxy coated.