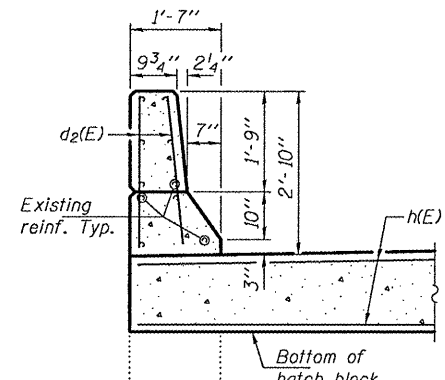
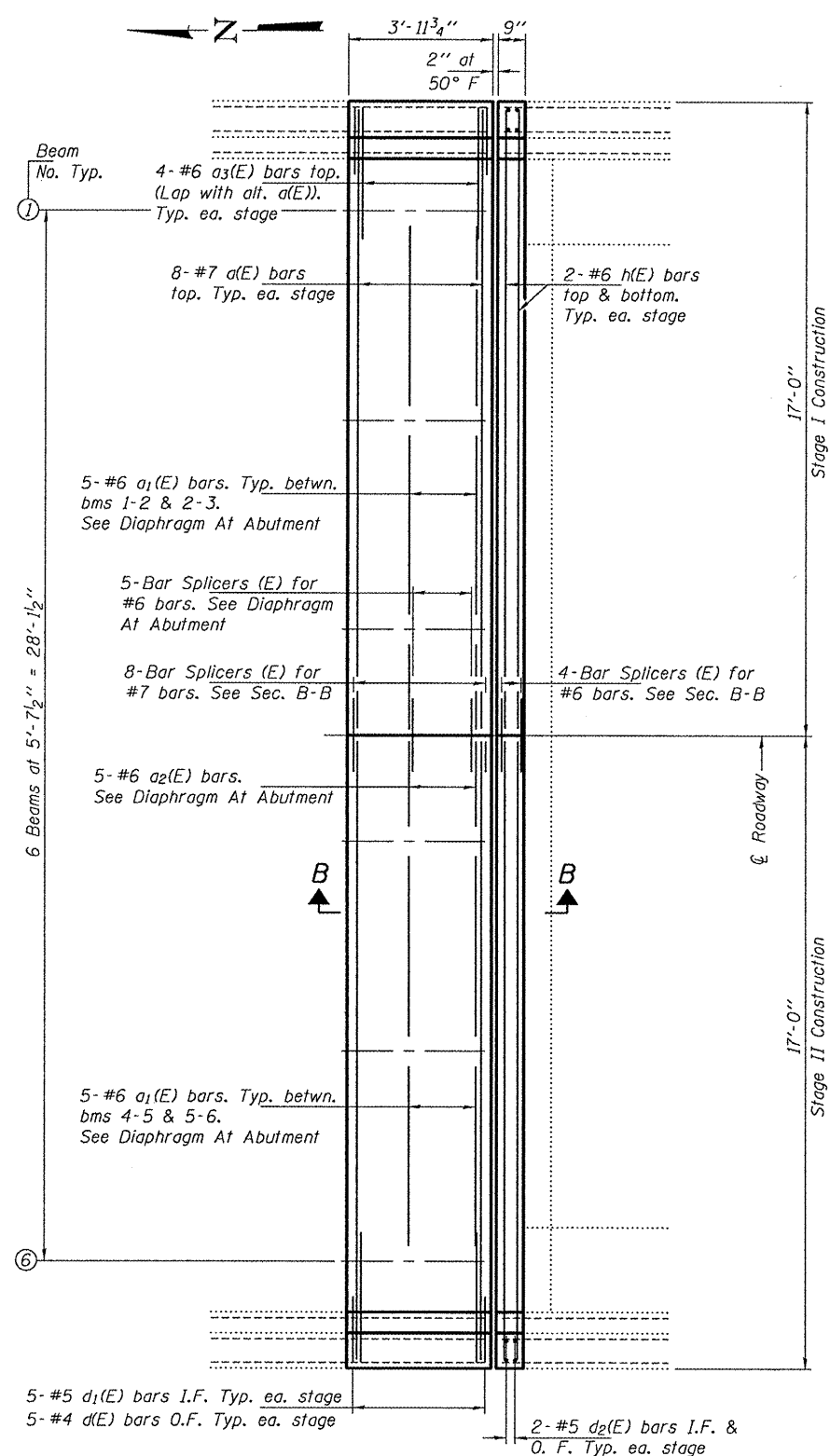


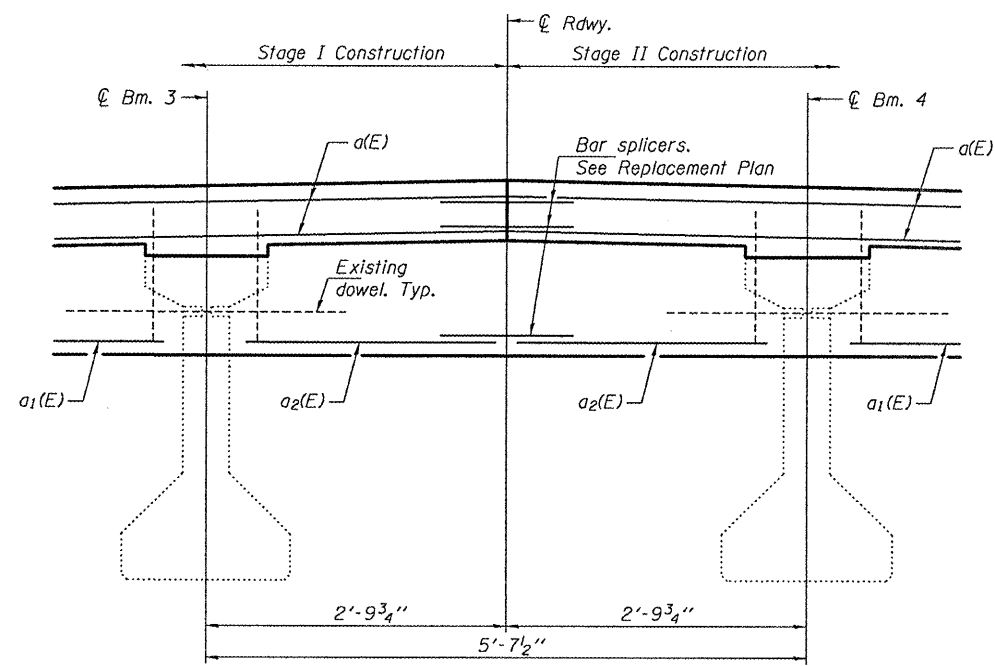
**SECTION B-B**



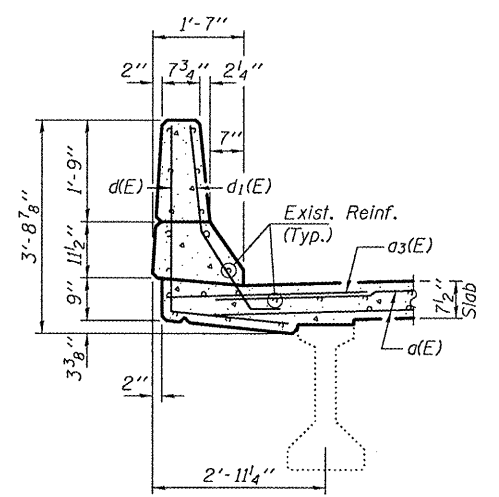
**SECTION AT APPROACH PARAPET**



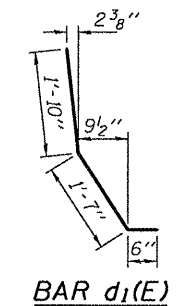
**REPLACEMENT PLAN**



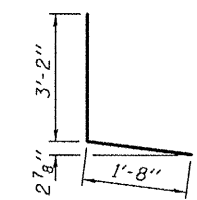
**DIAPHRAGM AT ABUTMENT**  
(Looking South)



**TYPICAL PARAPET SECTION**



**BAR d1(E)**



**BAR d(E)**

**BILL OF MATERIAL**

Bar	No.	Size	Length	Shape
a(E)	16	#7	16'-8"	—
a1(E)	20	#6	4'-9"	—
a2(E)	10	#6	2'-3"	—
a3(E)	8	#6	4'-0"	—
d(E)	10	#4	4'-10"	L
d1(E)	10	#5	3'-11"	L
d2(E)	8	#5	2'-8"	—
h(E)	8	#6	16'-8"	—
Bar Splicers	Each		17	
Concrete Removal			Cu. Yd.	8.8
Concrete Superstructure			Cu. Yd.	8.8
Reinforcement Bars, Epoxy Coated			Lbs.	1070

DESIGNED IJL  
 CHECKED ATH  
 DRAWN balva  
 CHECKED IJL ATH

EXAMINED *James F. Joffe* DATE MARCH 30, 2011  
 ACTING ENGINEER OF STRUCTURAL SERVICES

PASSED *Carl King*  
 ACTING ENGINEER OF BRIDGES AND STRUCTURES

**STATE OF ILLINOIS**  
**DEPARTMENT OF TRANSPORTATION**

**REPAIR DETAILS**  
**SN 036-0010**

F.A.P. RTE. 534 SECTION 111BR11 COUNTY HENDERSON SHEET NO. 10B TOTAL SHEETS 18 CONTRACT NO. 68998

SHEET NO. 3 OF 5 SHEETS

ILLINOIS FED. AID PROJECT