

STATE OF ILLINOIS
DEPARTMENT OF TRANSPORTATION
DIVISION OF HIGHWAYS

**PROPOSED
HIGHWAY PLANS**

F.A.P. 313 US34
SECTION (6BR)I
PROJECT BRIDGE BEAM REPLACEMENT

HENDERSON COUNTY

C-94-015-11
R4W

F.A.P. RTE.	SECTION	COUNTY	TOTAL SHEETS	SHEET NO.
313	(6BR)I	Henderson	9	1
Fed. Road Dist. No. 4		ILLINOIS	CONTRACT NO. 68A17	

*9+4 = 13

D-94-009-11

INDEX OF SHEETS:

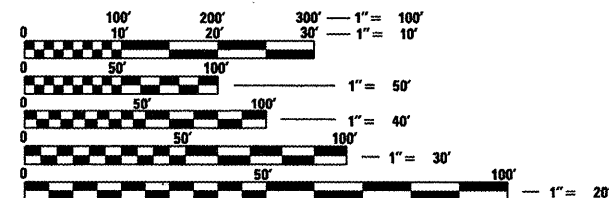
1. COVER SHEET
2. GENERAL NOTES & COMMITMENTS
- 3-4. SUMMARY OF QUANTITIES
5. TYPICAL SECTIONS
6. SCHEDULE OF QUANTITIES
7. GENERAL LAYOUT
8. PROPOSED TRAFFIC CONTROL
9. WIDTH RESTRICTION SIGNING

STANDARDS:

- 701001-02
- 701006-03
- 701201-04
- 701321-11

D4 STANDARDS:

- 630011-D4
- 630101-D4



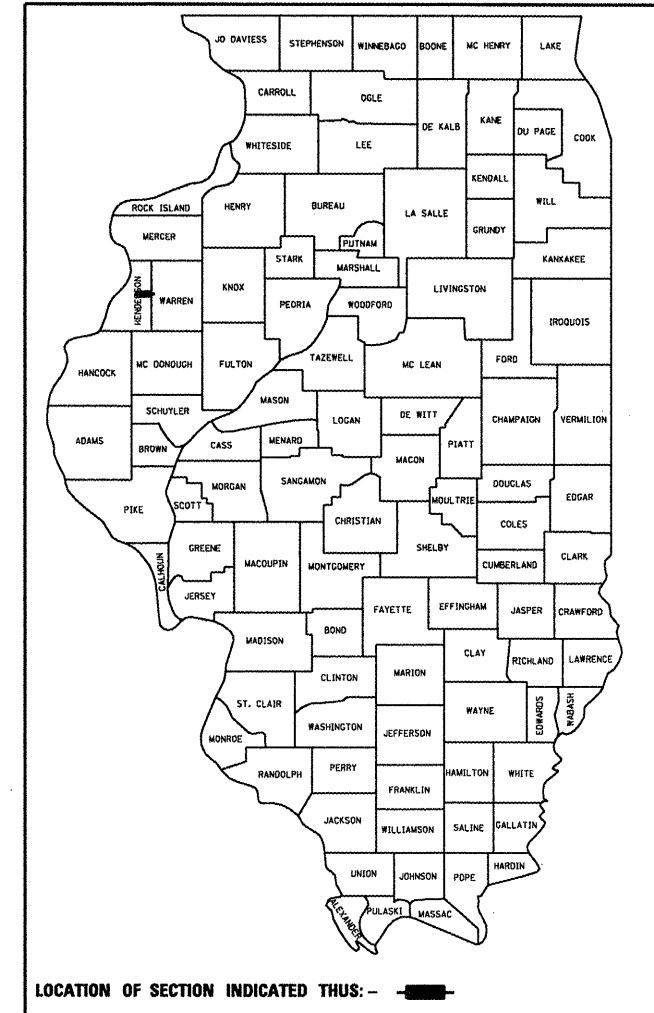
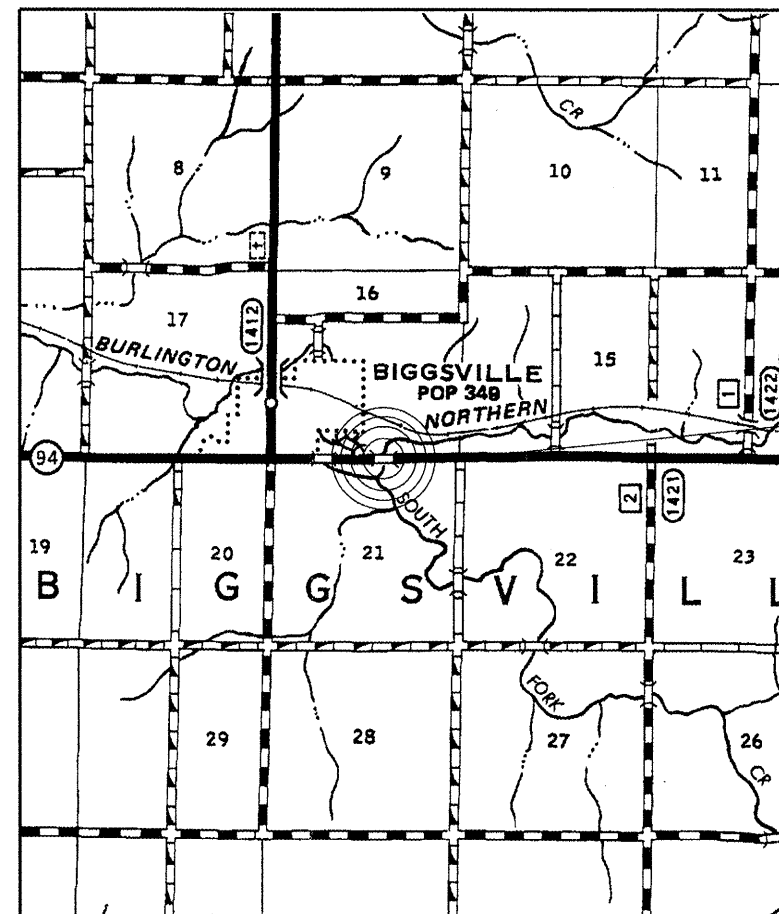
FULL SIZE PLANS HAVE BEEN PREPARED USING STANDARD ENGINEERING SCALES. REDUCED SIZED PLANS WILL NOT CONFORM TO STANDARD SCALES. IN MAKING MEASUREMENTS ON REDUCED PLANS, THE ABOVE SCALES MAY BE USED.

J.U.L.I.E.
JOINT UTILITY LOCATION INFORMATION FOR EXCAVATION
1-800-892-0123
OR 811

PROJECT ENGINEER: JIM MILLER (309) 671-3451
PROJECT DESIGNER: DANIEL CORP (309) 671-3473

CONTRACT NO. 68A17

ADT: 4100



LOCATION OF SECTION INDICATED THUS: —

(6BR)I STRUCTURE OVER TOM'S CREEK

REPLACEMENT OF 1 DECK BEAM ON STRUCTURE CARRYING US 34
OVER TOM'S CREEK (SN 036-0003), 0.5 MILE EAST OF IL94 JCT

STATE OF ILLINOIS
DEPARTMENT OF TRANSPORTATION
DIVISION OF HIGHWAYS

SUBMITTED 2/4/2011

Joseph L. Crane
DEPUTY DIRECTOR OF HIGHWAYS, REGION ENGINEER

March 25 2011
Scott E. Still
ENGINEER OF DESIGN AND ENVIRONMENT

March 25 2011
Christine M. Reed
DIRECTOR OF HIGHWAYS, CHIEF ENGINEER

PRINTED BY THE AUTHORITY
OF THE STATE OF ILLINOIS

COMMITMENTS

No commitments have been made for this project.

GENERAL NOTES

Plan dimensions and details relative to existing structure have been taken from existing plans and are subject to nominal construction variations. It shall be the Contractor's responsibility to verify such dimensions and details in the field and make necessary approved adjustments prior to construction or ordering of materials. Such variations shall not be cause for additional compensation for a change in the scope of the work, however, the Contractor will be paid for the quantity actually furnished at the unit price bid for the work.

FILE NAME = SN 036-0003 US34ovrD1dTomCrk.dgn	USER NAME = corpdm	DESIGNED - D CORP	REVISED - -----	STATE OF ILLINOIS DEPARTMENT OF TRANSPORTATION	COMITMENTS & GENERAL NOTES	F.A.P. RTE. 313	SECTION (6BR)I	COUNTY HENDERSON	TOTAL SHEET NO. 2	SHEET NO. 9
PLOT SCALE = 100.0000' / IN.	CHECKED - C JONES	REVISED - -----	PPC BEAM REPL.			CONTRACT NO. 68A17				
PLOT DATE = 2/4/2011	DATE - 2/03/2011	REVISED - -----	SCALE: -----			SHEET NO. 2 OF 9 SHEETS	STA. 625+30.00 TO STA. 625+73.00	ILLINOIS FED. AID PROJECT		

SUMMARY OF QUANTITIES

CONT. MAINT

100% STATE 0014
HENDERSON

CODE NO.	ITEM	UNIT	RURAL	TOTAL
40603540	POLYMERIZED SURFACE COURSE, MIX "D", N70 <i>HOT-MIX ASPHALT</i>	TON	1.4	1.4
50400405	PRECAST PRESTRESSED CONCRETE DECK BEAMS (21" DEPTH)	SQFT	129	129
58100200	WATERPROOFING MEMBRANE SYSTEM	SQYD	17.1	17.1
58300100	PORTLAND CEMENT MORTAR FAIRING COURSE	FOOT	43	43
67100100	MOBILIZATION	LSUM	1	1
70100405	TRAFFIC CONTROL AND PROTECTION, STANDARD 701321	EACH	1	1
70100450	TRAFFIC CONTROL AND PROTECTION, STANDARD 701201	LSUM	1	1
70100500	TRAFFIC CONTROL AND PROTECTION, STANDARD 701326	LSUM	1	1
70106500	TEMPORARY BRIDGE TRAFFIC SIGNALS	EACH	1	1
70300520	PAVEMENT MARKING TAPE, TYPE III 4"	FOOT	727	727
70301000	WORKZONE PAVEMENT MARKING REMOVAL	SQFT	242	242

FILE NAME =
SN 036-0003 US34ovr-01dTomCrk.dgn

USER NAME = corpdm
PLOT SCALE = 100.0000' / IN.
PLOT DATE = 2/4/2011

DESIGNED - D CORP
DRAWN - D CORP
CHECKED - C JONES
DATE - 2/03/2011

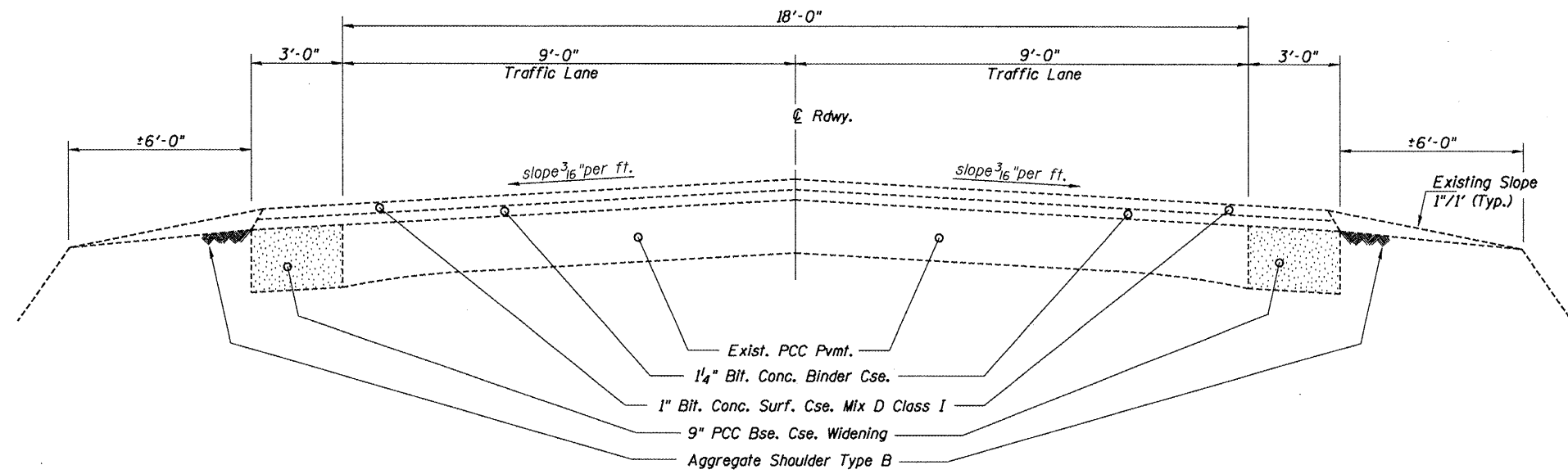
REVISED - -----
REVISED - -----
REVISED - -----
REVISED - -----

**STATE OF ILLINOIS
DEPARTMENT OF TRANSPORTATION**

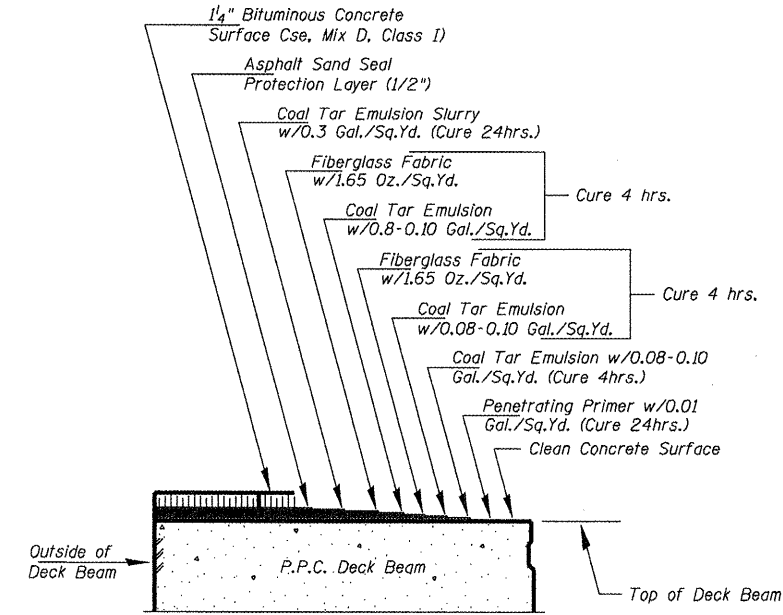
SUMMARY OF QUANTITIES

SCALE: ----- SHEET NO. 3 OF 9 SHEETS STA. 625+30.00 TO STA. 625+73.00

F.A.P. RTE. 313	SECTION (6BR)1	COUNTY HENDERSON	TOTAL SHEETS 3	SHEET NO. 9
PPC BEAM REPL.			CONTRACT NO. 68A17	
ILLINOIS FED. AID PROJECT				

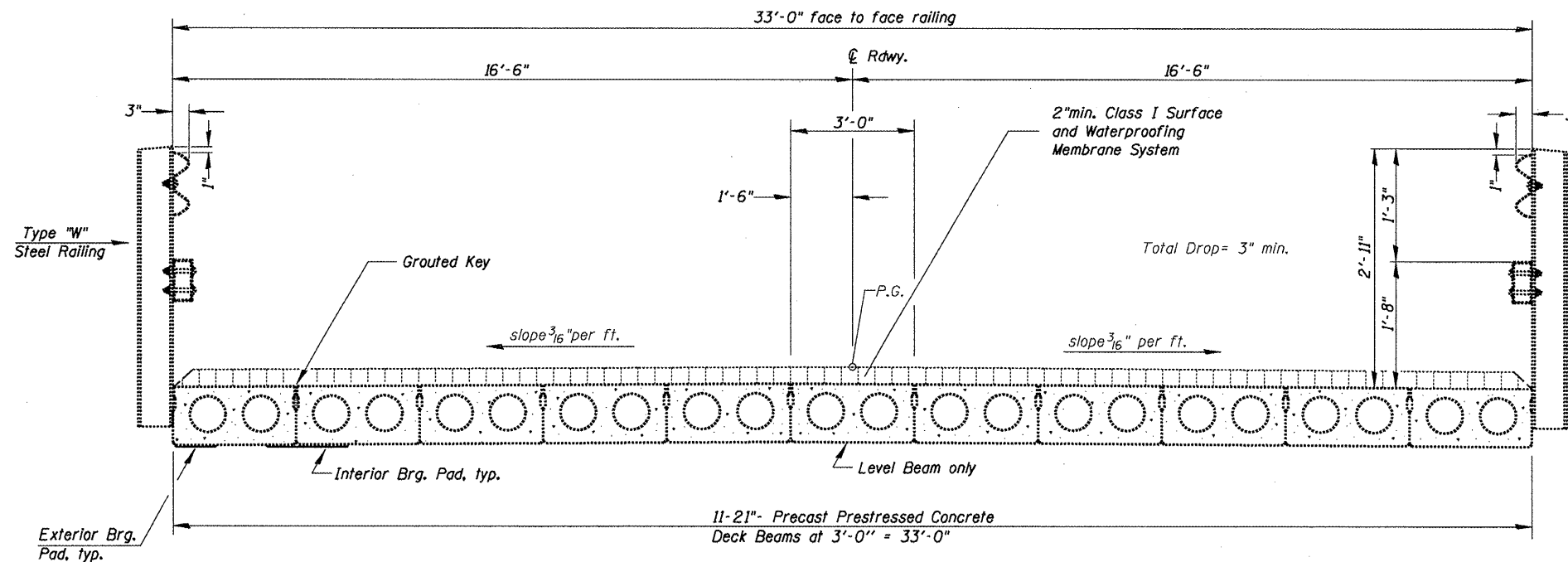


ROADWAY SECTION

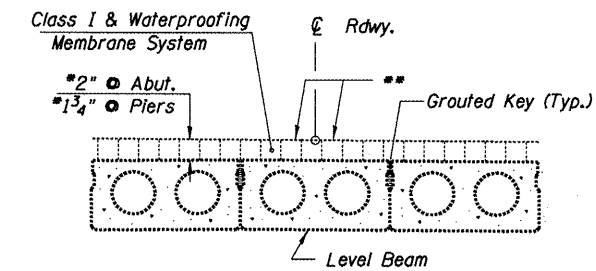


EXISTING DECK SURFACING DETAIL

***NOTE**
Plan dimensions and details relative to the existing structure have been taken from existing plans and are subject to nominal variations. Field inspections have revealed an existing overlay/shoulder thickness of up to 6" on top of the PPC deck beams.



BRIDGE CROSS SECTION



CLASS I DETAIL & WATERPROOFING TREATMENT
(Center Beam)

** Vary slopes over level beam as required to obtain equal thickness at adjacent beams.

SN.036-0003 US.34
over Old Tom Crk.

FILE NAME = SN 036-0003 US34overOldTomCrk.dgn	USER NAME = corpdm	DESIGNED - D CORP	REVISED -	STATE OF ILLINOIS DEPARTMENT OF TRANSPORTATION	TYPICAL SECTIONS		F.A.P. RTE. 313	SECTION (6BR)	COUNTY HENDERSON	TOTAL SHEETS 5	SHEET NO. 9	
PLOT SCALE = 1/8" = 1'-0"	CHECKED - C JONES	DATE - 2/03/2011	REVISED -		SCALE: _____	SHEET NO. 5 OF 9 SHEETS	STA. 625+30.00 TO STA. 625+73.00	PPC BEAM REPL.	CONTRACT NO. 68A17			
PLOT DATE = 2/4/2011	DATE - 2/03/2011	REVISED -	REVISED -		[ILLINOIS] FED. AID PROJECT							

SCHEDULE OF QUANTITIES

PAVEMENT MARKING LINE, 4" & PAVEMENT MARKING REMOVAL

LOCATION STA. TO STA.	PVMT. MRKG. LINE, 4"		PVMT. MRKG. REM.	
	WHITE LENGTH (FOOT)	YELLOW LENGTH (FOOT)	WHITE EDGELINE (SQ.FT.)	YELLOW SKIP DASH (SQ.FT.)
Sta. 624+35 to Sta. 626+48Rt.	243		81	
Sta. 624+55 to Sta. 626+48 C		80		27
Sta. 624+10 to Sta. 627+11 LT.	43			
TOTAL		366		109

PAVEMENT MARKING TAPE TYPE III, 4" & WORKZONE PAVEMENT MARKING REMOVAL

LOCATION STA. TO STA.	TEMP. PVMT. MRKG. LINE-4" WHITE (FT.)	TEMP. PVMT. MRKG. LINE-4" WHITE (FT.)	WORK ZONE PVMT. MRKG. REM. (FT.)
Sta. 623+10 to Sta. 624+30		124 (Taper)	124 (Taper)
Sta. 624+55 to Sta. 625+98		193 (C)	193 (C)
Sta. 625+98 to Sta. 627+15		167 (Taper)	167 (Taper)
Sta. 624+30 to Sta. 625+30	100 (Edge)		100 (Edge)
Sta. 625+30 to Sta. 625+73	43 (Deck)		43 (Deck)
Sta. 625+73 to Sta. 626+73	100 (Edge)		100 (Edge)
SUB-TOTAL	243	484	
TOTAL		727	727

TRAFFIC CONTROL

LOCATION STA. TO STA.	TEMP. CONC. BARRIER (FT)	IMPACT ATTEN. TEMP. (EACH)	T,C.&P. STANDARD 701201 (EACH)	T,C.&P. STANDARD 701321 (EACH)	T,C.&P. STANDARD 701326 (EACH)
Sta. 623+89 to Sta. 627+10	213				
JOBSITE		2	1	1	1
TOTAL	213	2	1	1	1

TEMPORARY TRAFFIC SIGNALS

LOCATION	TRAFFIC SIGNALS(EACH)
Jobsite Traffic Control	1
TOTAL	1

PAVEMENT MIX SPECIFICATION

The following mixture requirements are applicable as replacement for the existing HMA Surface Removal quantity on the bridge deck.

MIXTURE USE(S):	**SURFACE COURSE
AC/PG:	SBS or SBR 70-22
RAP% (MAX):	10% Max
Design Air Voids:	4.0% @ N=70
Mixture Composition: (Graduation Mixture)	IL. 9.5 or 12.5
Friction Aggregate:	Mixture D (dolomite only)

** Individual lift thickness will be no less than 3x nominal maximum and no more than 6x nominal maximum aggregate size.

BITUMINOUS WIDENING MIX SPECIFICATION

The following mixture requirements are applicable to this project:

MIXTURE USE(S):	SURFACE LIFT	LOWER LIFTS
AC/PG:	PG 64-22	PG 64-22
RAP% (MAX): **	15% Max	25% Max
Design Air Voids:	4.0% @ N=50	4.0% @ N=50
Mixture Composition: (Graduation Mixture)	IL. 9.5 or 12.5	IL 19.0
Friction Aggregate:	Mixture D (dolomite only)	N/A

** If RAP option is selected, the asphalt cement grade may need to be adjusted by the Materials Engineer.

SHOULDER REMOVAL/REPLACEMENT

BITUMINOUS CONCRETE SHOULDER REMOVAL			
LEFT WEST APPROACH	SQ.YD.	LEFT EAST APPROACH	SQ.YD.
Sta. 626+94 to Sta. 626+03	22.5	Sta. 625+00 to Sta. 624+09	22.5
RIGHT WEST APPROACH		RIGHT EAST APPROACH	
N/A		N/A	
TOTAL			45.0
HMA BASE COURSE WIDENING, 9"			
LEFT WEST APPROACH	SQ.YD.	LEFT EAST APPROACH	SQ.YD.
Sta. 626+94 to Sta. 626+03	22.5	Sta. 625+00 to Sta. 624+09	22.5
RIGHT WEST APPROACH		RIGHT EAST APPROACH	
N/A		N/A	
TOTAL			45.0

NOTE
Additional pay items that may not be included in the SCHEDULE OF QUANTITIES pertain to the superstructure repair and are designated on the Bridge Office Repair Details, (pages 13-15). Width Restriction Signing is on Sheet 12.

SCHEDULE OF QUANTITIES

PPC BEAM REPL.

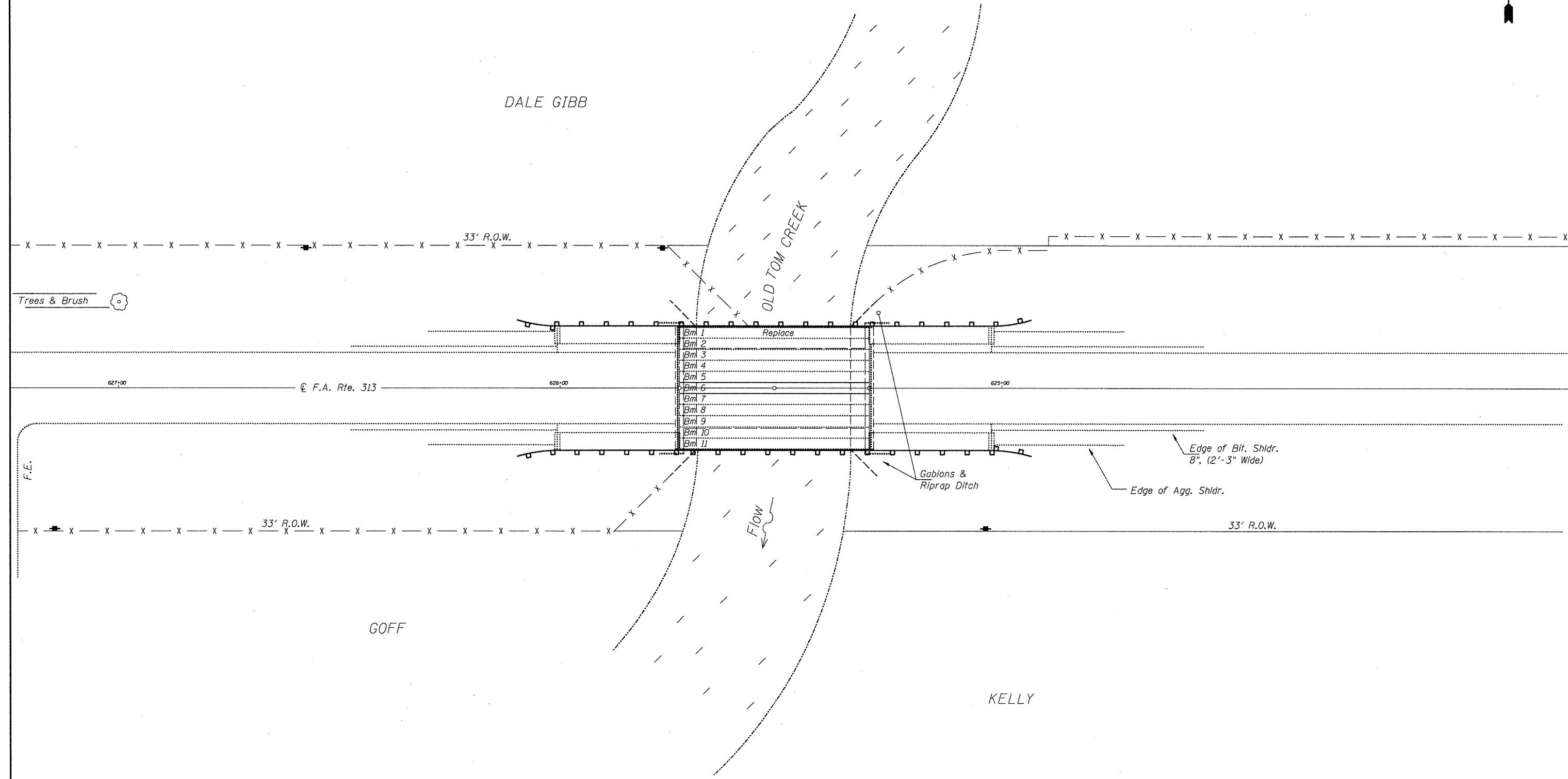
FILE NAME = SN 036-0003 US34ovr01dTomCrk.dgn	USER NAME = corpdm	DESIGNED - D CORP	REVISED -	STATE OF ILLINOIS DEPARTMENT OF TRANSPORTATION	SCHEDULE OF QUATITIES	F.A.P. RTE. 313	SECTION (6BR)I	COUNTY HENDERSON	TOTAL SHEETS 6	SHEET NO. 9		
PLT SCALE = 100.0000' / IN.	CHECKED - C JONES	REVISED -	SCALE: _____			SHEET NO. 6 OF 9 SHEETS	STA. 625+30.00 TO STA. 625+73.00	ILLINOIS FED. AID PROJECT				
PLT DATE = 2/4/2011	DATE - 2/03/2011	REVISED -										

B.M. - Chisled square on SW end of W.abutment of bridge, Sta. 625+73, Elev. 645.45

T10N- R2W- 4th P.M.
SE 1/4 SECTION 16



DALE GIBB



GOFF

KELLY

NW 1/4 SECTION 21

SN.036-0003 US.34
over Old Tom Crk.

FILE NAME =
SN 036-0003 US34ovrOldTomCrk.dgn

USER NAME = corpdm
PLOT SCALE = 100.0000' / IN.
PLOT DATE = 2/4/2011

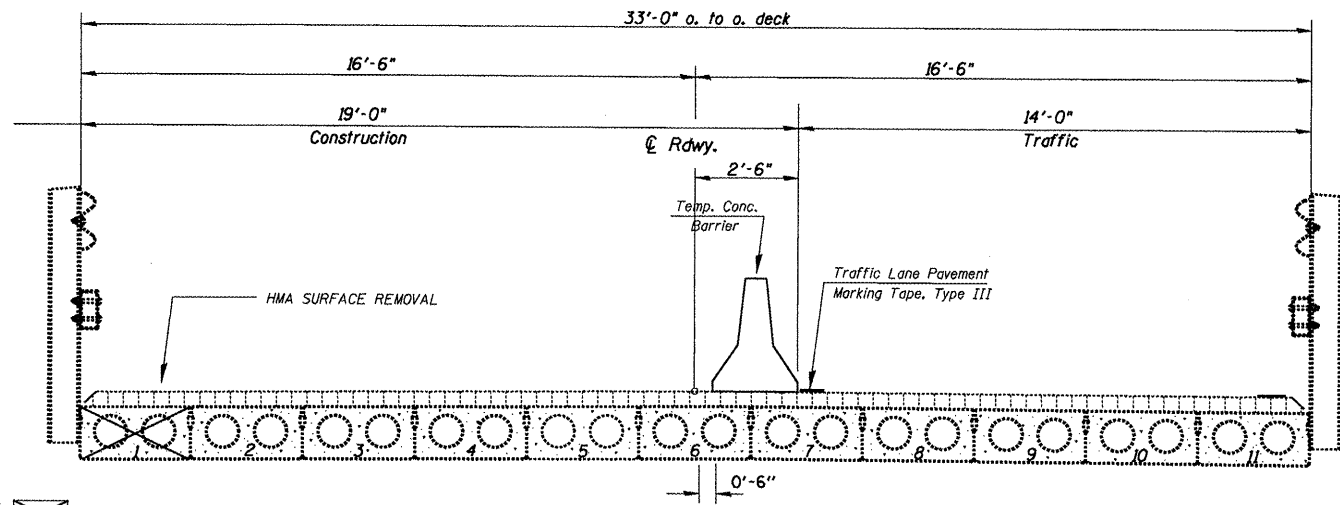
DESIGNED - D CORP	REVISED -
DRAWN - D CORP	REVISED -
CHECKED - C JONES	REVISED -
DATE - 2/03/2011	REVISED -

STATE OF ILLINOIS
DEPARTMENT OF TRANSPORTATION

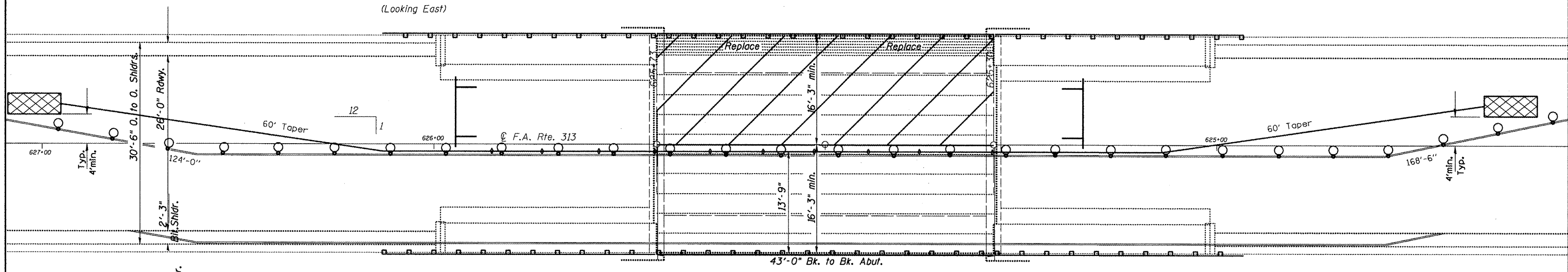
GENERAL LAYOUT

SCALE: SHEET NO. 7 OF 9 SHEETS STA. 625+30.00 TO STA. 625+73.00

F.A.P. RTE. 313	SECTION (6BR)1	COUNTY HENDERSON	TOTAL SHEETS 7	SHEET NO. 9
PPC BEAM REPL.		CONTRACT NO. 68A17		
ILLINOIS FED. AID PROJECT				



ELEVATION



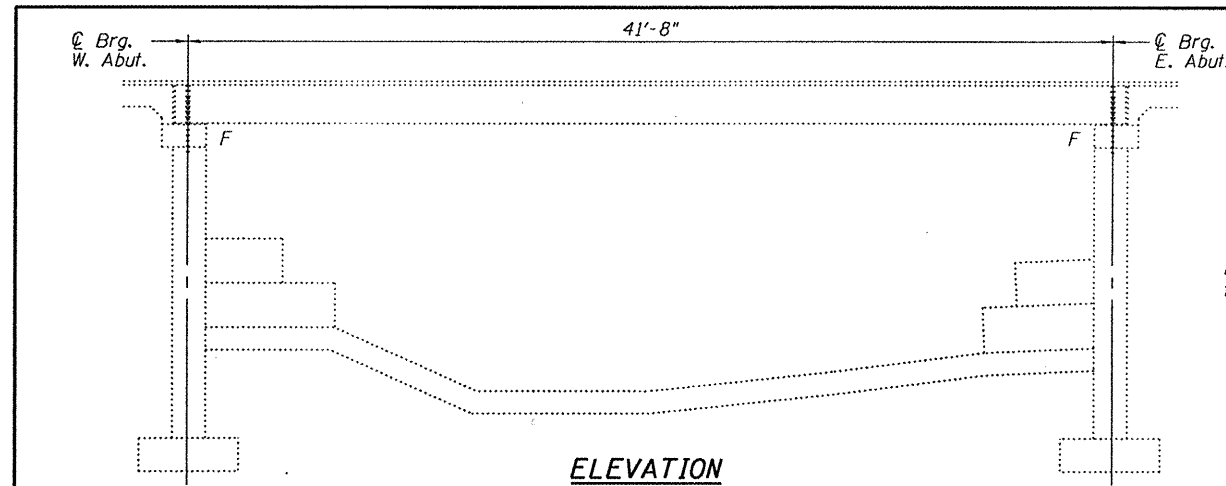
- SYMBOLS**
- Work Area
 - Type II Barricade
 - Drum w/steady burning light
 - Type C bidirectional reflector
 - Temporary Concrete Barrier
 - Impact Attenuator NRD TL3



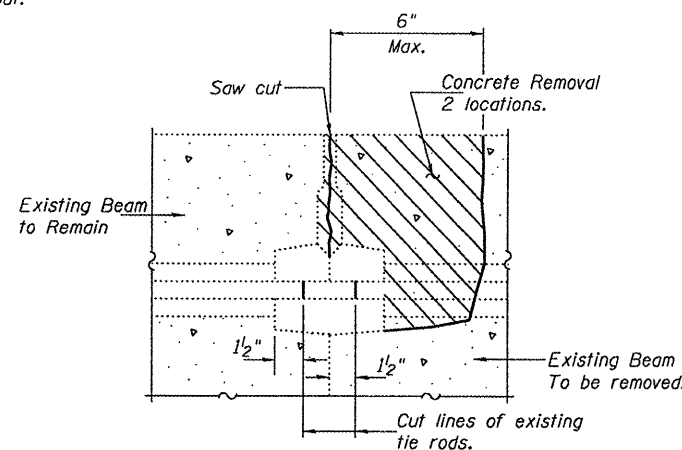
NOTES
 Refer to Highway Standard 701321 for exact placement of traffic management devices and other clarifications as construction staging symbols and dimensioning were duplicated off of this standard. Temporary Traffic Signals shown in Standard 701321 are to be installed by others. Removal of these signals is included in this contract. See Special Provisions.

SN.036-0003 US.34
 over Old Tom Crk.

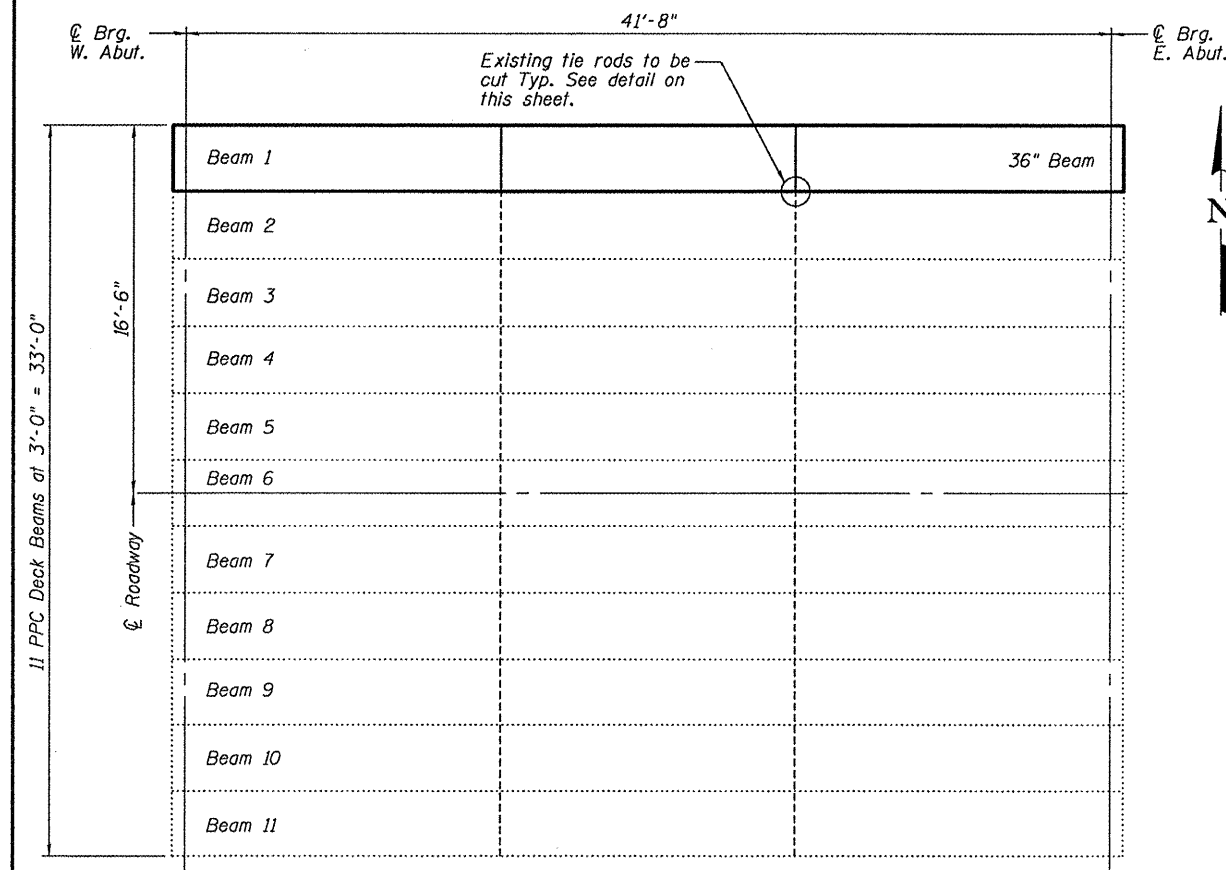
FILE NAME = SN 036-0003 US34avrD1dTomCrk.dgn	USER NAME = corpdm	DESIGNED - D CORP	REVISED -	STATE OF ILLINOIS DEPARTMENT OF TRANSPORTATION	PROPOSED TRAFFIC CONTROL	F.A.P. RTE. = 313	SECTION = (6BR)	COUNTY = HENDERSON	TOTAL SHEETS = 8	SHEET NO. = 9	
PLOT SCALE = 1/8" = 1' IN.	CHECKED - C JONES	REVISED -	SCALE: _____			SHEET NO. 8 OF 9 SHEETS	PPC BEAM REPL.	CONTRACT NO. 68A17		ILLINOIS FED. AID PROJECT	
PLOT DATE = 2/4/2011	DATE = 2/03/2011	REVISED -	STA. 625+30.00 TO STA. 625+73.00								



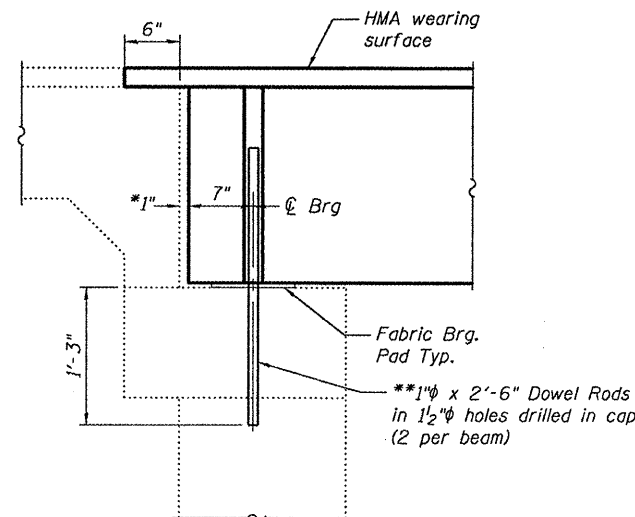
ELEVATION



BEAM REMOVAL DETAIL AT TRANSVERSE TIES



PLAN



TYPICAL SECTION AT ABUTMENTS

*1" Joint shall be filled with non-shrink grout. Dimension may vary to accommodate tolerance in beam lengths.

**Existing dowel rods are to be burned off, ground flush, and sealed with epoxy prior to placement of new beams. Cost included in Removal of Existing PPC Deck Beams. After beams have been erected holes shall be drilled into cap and dowel rods placed. Dowel holes shall be filled with non-shrink grout to top of beam and allowed to cure a minimum of 24 hours prior to grouting the shear keys.

GENERAL NOTES

The contractor is advised that the existing PPC Deck Beams are in a deteriorated condition with reduced load carrying capacity. It is the contractor's responsibility to account for the condition of the beams when developing construction procedures.

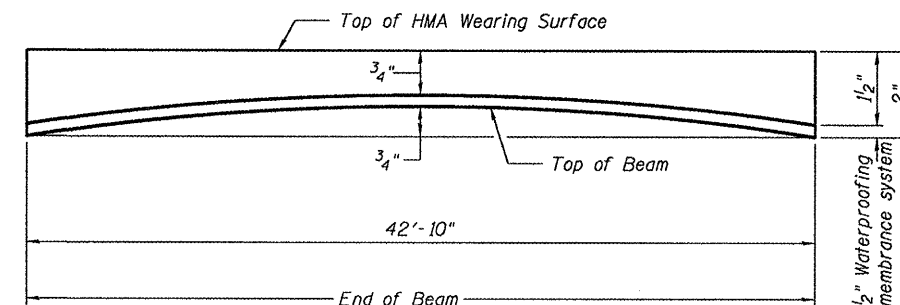
Any damage done to the bridge during beam removal shall be repaired by the Contractor. Cost to be included in the cost of Removal of Existing PPC Deck Beams.

The top surface of the beams shall be finished according to the IDOT Manual for Fabrication of Precast Prestressed Concrete Products.

Plan dimensions and details relative to existing plans are subject to routine variations. The Contractor shall field verify existing dimensions and details affecting new construction and make necessary approved adjustments prior to construction or ordering of materials. Such variations shall not be cause for additional compensation for a change in scope of the work, however, the Contractor will be paid for the quantity actually furnished based upon the unit price bid for the work.

If the contractor's procedure for existing beam removal or placement of new beams involves placement of cranes or other heavy equipment on the bridge, a detailed procedure shall be submitted to the Engineer for approval. The procedure shall include calculations, prepared and sealed by an Illinois Licensed Structural Engineer, verifying that the equipment and procedure used will not overstress the new or existing beams. To distribute load to multiple beams and protect the existing surface, in all cases a double layer mat of heavy timbers shall be used at all times under crane tracks or wheels and any outriggers in the down position. If necessary, shims shall be used under the crane mat to ensure uniform contact with the underlying beams. If heavy equipment will be placed on new PPC deck beams, the following shall be done prior to placement of the timber mats: placement and tightening of transverse tie assemblies, grouting and curing the dowel rods 24 hours minimum and grouting and curing the shear keys.

Temporary concrete barrier shall only be anchored into the overlay and not into the PPC Deck Beams.



ANTICIPATED INITIAL CAMBER DIAGRAM

DESIGN STRESSES PRECAST UNITS

f'c = 5,000 psi
f'ci = 4,000 psi
f's = 270,000 psi (1/2" φ low lax strands)
f'si = 201,960 psi (1/2" φ low lax strands)

TOTAL BILL OF MATERIAL

ITEM	UNIT	QUANTITY
Removal of Existing PPC Deck Beams	Sq. Ft.	129
Precast Prestressed Concrete Deck Beams (21" Depth)	Sq. Ft.	129
Removing and Re-Erecting Existing Railing	Foot	43
Waterproofing Membrane System	Sq. Yd.	17.1
PC Mortar Fairing Course	Foot	43
Hot-Mix Asphalt Surface Removal (Deck)	Sq. Yd.	2.4
Polymerized HMA Surface Course Mix "D" N70	Tons	1.4



Expires 11/30/2012

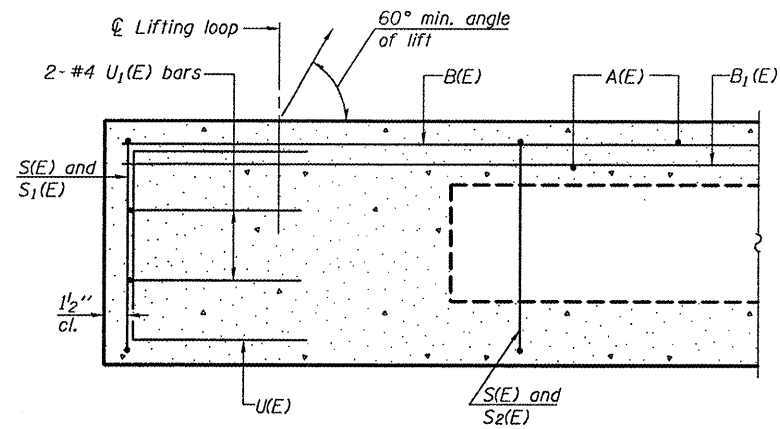
DESIGNED - <i>David H. DeLia</i>	EXAMINED - <i>David Carl Puzey</i>	DATE - MARCH 14, 2011
CHECKED - <i>Drew Christopher</i>	PASSED - <i>David Carl Puzey</i>	
DRAWN - <i>Drew Christopher</i>		
CHECKED - <i>JSL</i>		

STATE OF ILLINOIS
DEPARTMENT OF TRANSPORTATION

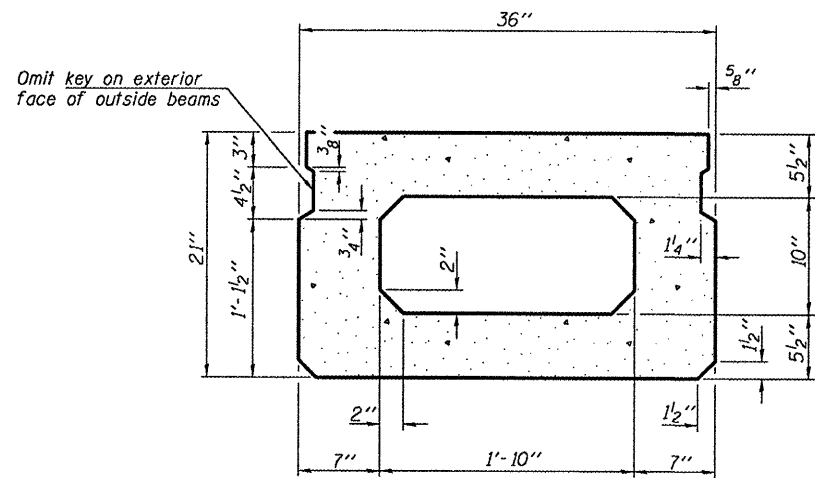
PLAN AND ELEVATION
SN 036-0003

SHEET NO. 1 OF 4 SHEETS

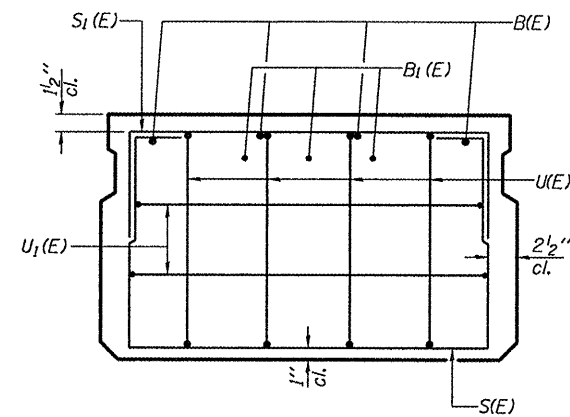
F.A. RTE. 45	SECTION (6BR)I	COUNTY Henderson	TOTAL SHEETS 9	SHEET NO. 8A
CONTRACT NO. 68A17			ILLINOIS FED. AID PROJECT	



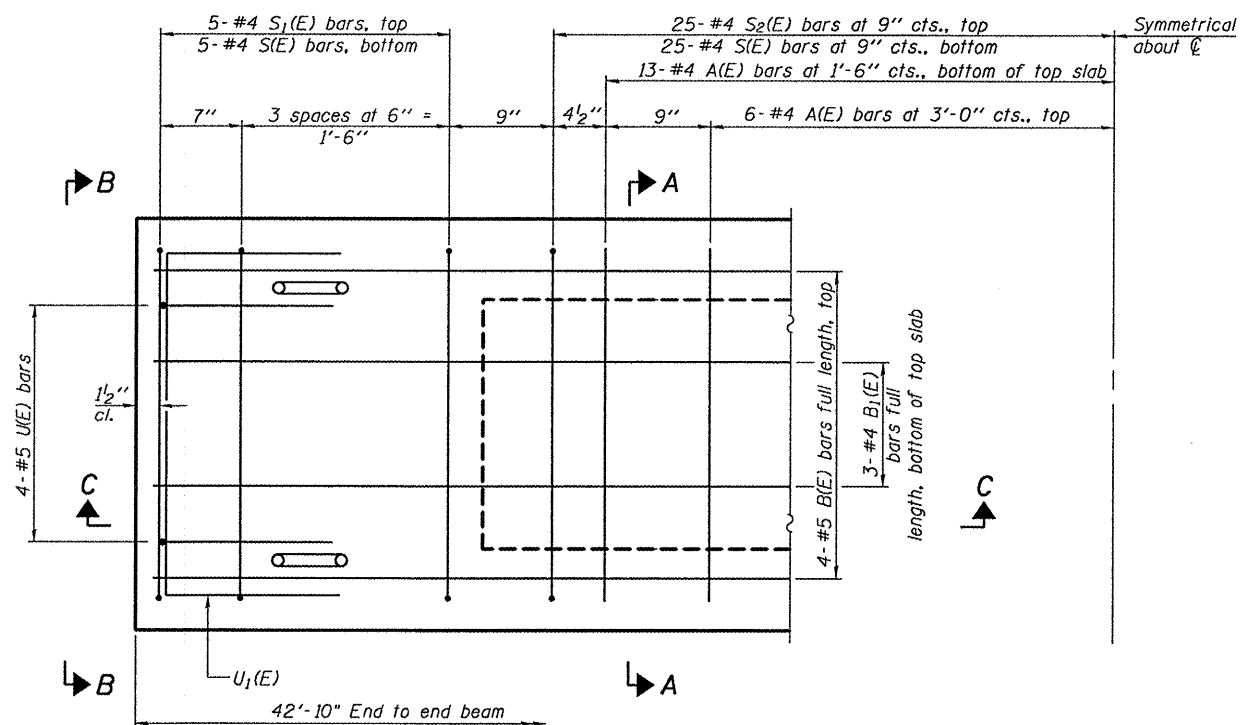
SECTION C-C



SECTION A-A
(Showing dimensions)

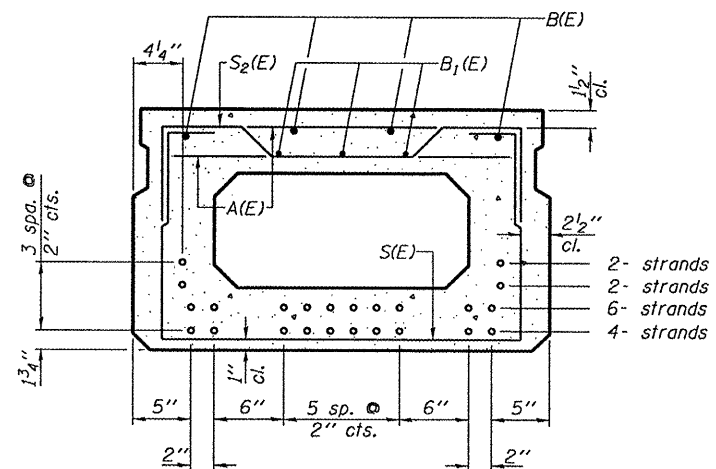


VIEW B-B



PLAN VIEW

Note: Spacing of S(E) and S2(E) bars may be adjusted up to 4" in the immediate area of the transverse tie diaphragms to miss the block outs for the transverse ties.



SECTION A-A
(Showing reinforcement and permissible strand locations)

Note: Place the number of strands specified in each row symmetrically about the centerline of beam in the permissible strand locations shown.

BAR LIST
ONE BEAM ONLY
(For information only)

Bar	No.	Size	Length	Shape
A(E)	37	#4	2'-7"	—
B(E)	4	#5	42'-7"	—
B1(E)	3	#4	42'-7"	—
S(E)	60	#4	6'-5"	□
S1(E)	10	#4	5'-7"	□
S2(E)	50	#4	5'-10"	□
U(E)	8	#5	4'-0"	□
U1(E)	4	#4	5'-0"	□

Note: See sheet 3 of 4 for additional details and Bill of Material.

DESIGNED - V.H.V.
CHECKED - I.J.L.
DRAWN - Drew Christopher
CHECKED - V.H.V. I.J.L.

EXAMINED
PASSED
ACTING ENGINEER OF STRUCTURAL SERVICES
ACTING ENGINEER OF BRIDGES AND STRUCTURES

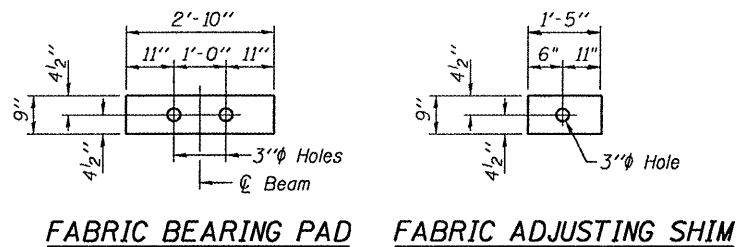
DATE - MARCH 14, 2011

STATE OF ILLINOIS
DEPARTMENT OF TRANSPORTATION

BEAM DETAILS
SN 036-0003

SHEET NO. 2 OF 4 SHEETS

F.A. RTE.	SECTION	COUNTY	TOTAL SHEETS	SHEET NO.
45	(6BR)I	Henderson	9	8B
CONTRACT NO. 68A17			ILLINOIS FED. AID PROJECT	



FABRIC BEARING PAD FABRIC ADJUSTING SHIM

FIXED

Note: Omit holes when using expansion bearings.

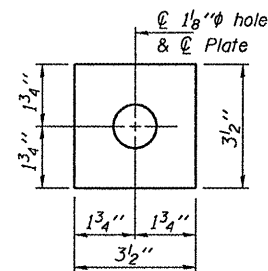
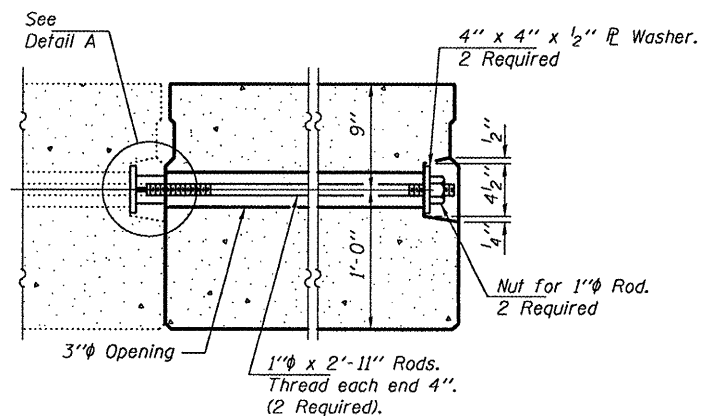
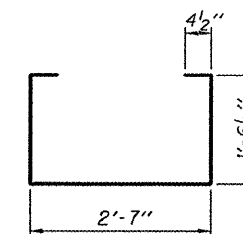


PLATE A
(2 Required)

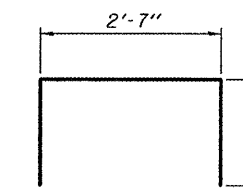


TRANSVERSE TIE ASSEMBLY

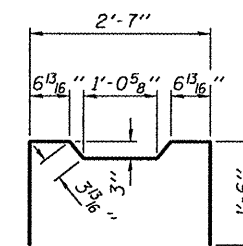
**Limits of HMA Surface Removal. Existing waterproofing to remain. Lap new waterproofing 6" over existing waterproofing.



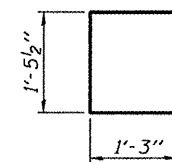
BAR S1(E)



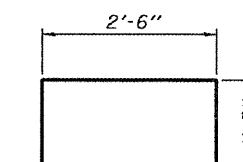
BAR S2(E)



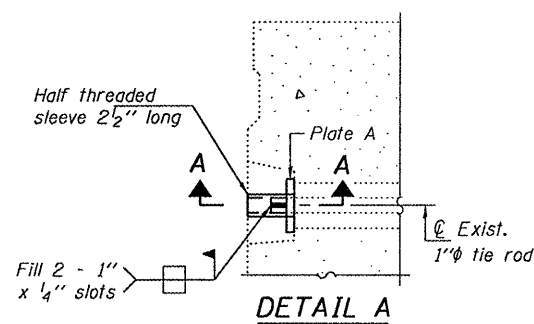
BAR U1(E)



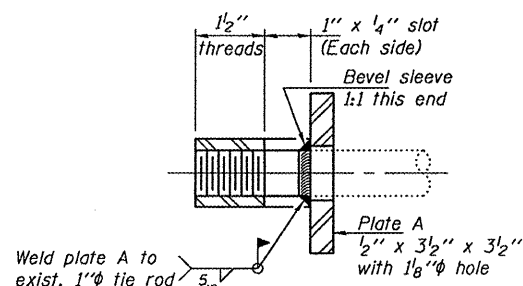
BAR U2(E)



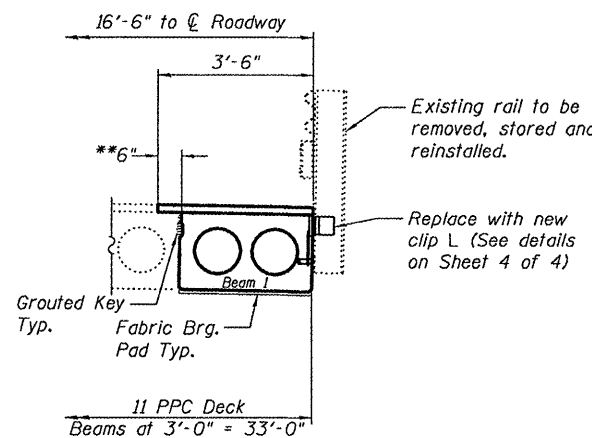
BAR U3(E)



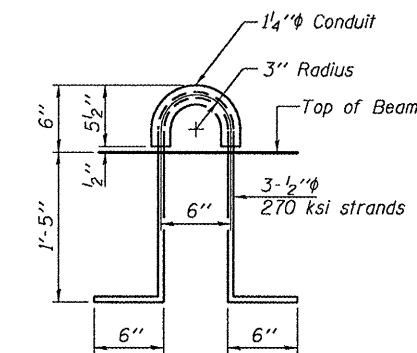
DETAIL A



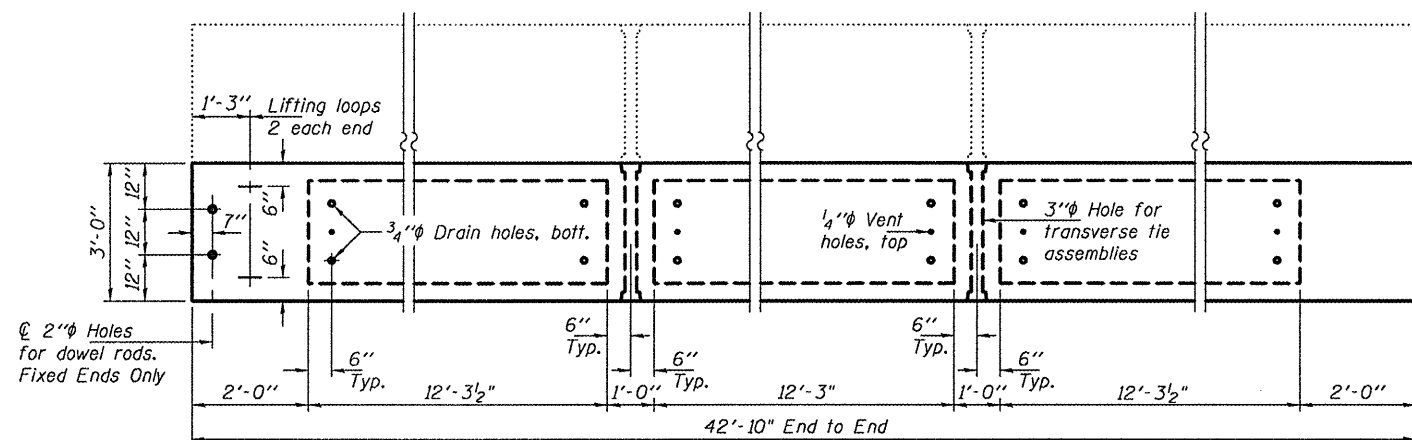
SECTION A-A
(2 Required)



DECK CROSS SECTION
(Looking West)



LIFTING LOOP DETAIL



PLAN

NOTES

Prestressing steel shall be uncoated high strength, low relaxation 7-wire strand, Grade 270. The nominal diameter shall be 1/2" and the nominal cross-sectional area shall be 0.153 sq. in. The 1" rods in the transverse tie assembly shall be tightened to a snug fit and the threads set. Pockets on exterior faces of bridge shall be filled with grout after transverse tie assembly is in place. Reinforcement bars shall conform to ASTM A 706 (IL MOD), Grade 60. (See Special Provisions). Two 1/8" fabric adjusting shims of the dimensions shown shall be provided for each bearing pad location. A minimum 2 1/2" lifting pin shall be used to engage the lifting loops during handling. Corrosion Inhibitor, per Article 1020.05(b)(12) and 1021.06 of the Standard Specifications, shall be used in the concrete for precast prestressed concrete deck beams. Compressive strength of prestressed concrete, f'c, shall be 5000 psi. Compressive strength of prestressed concrete at release, f'ci, shall be 4000 psi.

BILL OF MATERIAL

Precast Prestressed Conc. Deck Bms. (21" depth)	Sq. Ft.	129
---	---------	-----

DESIGNED - V.H.V.	CHECKED - I.J.L.
DRAWN - Drew Christopher	CHECKED - V.H.V. I.J.L.

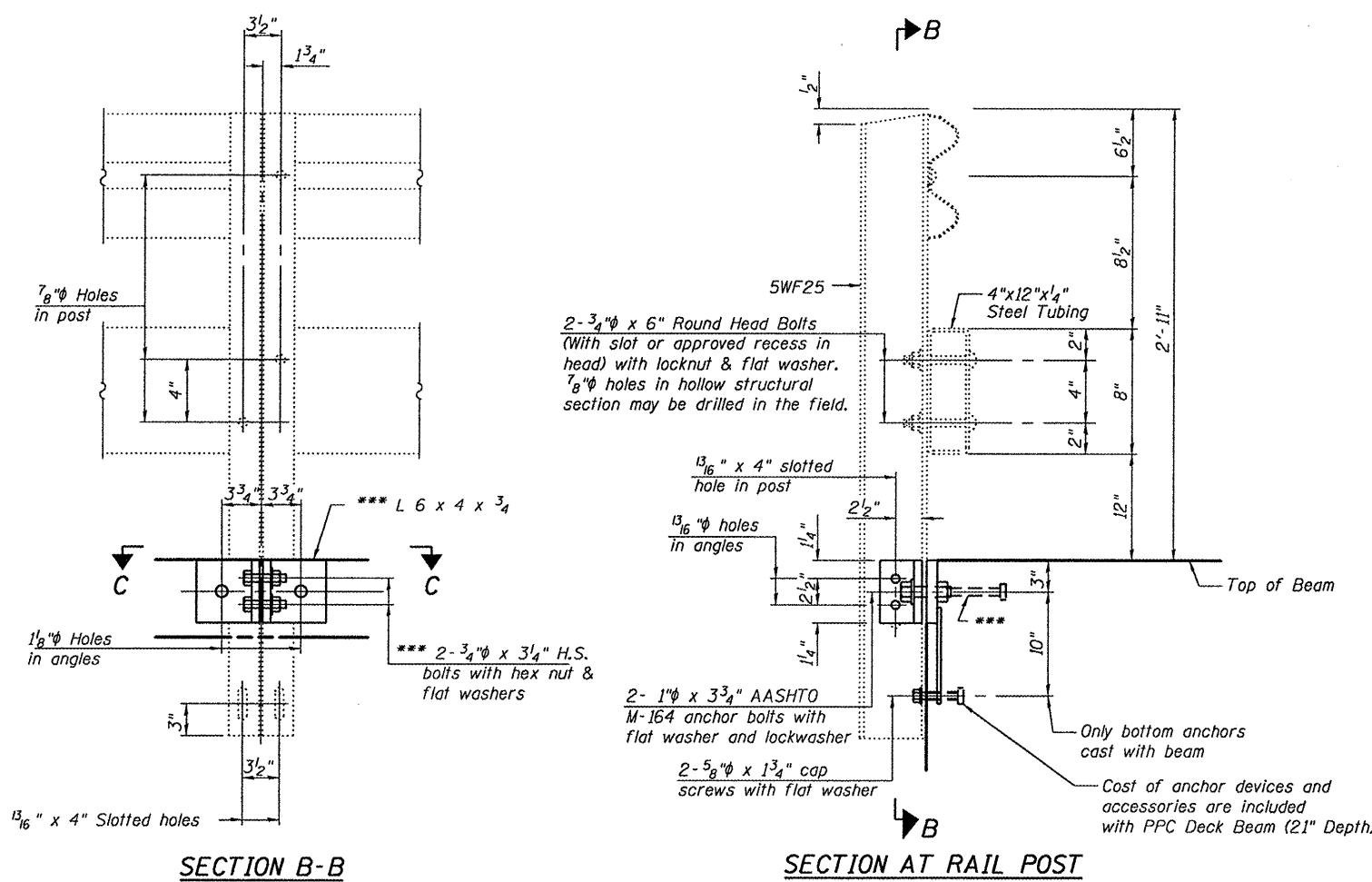
EXAMINED	DATE - MARCH 14, 2011
PASSED	

STATE OF ILLINOIS
DEPARTMENT OF TRANSPORTATION

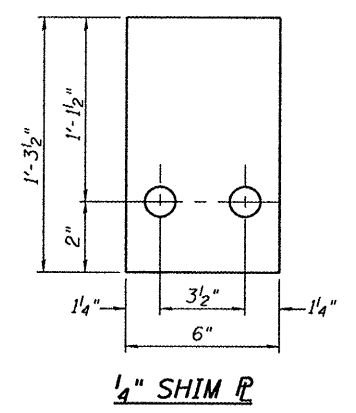
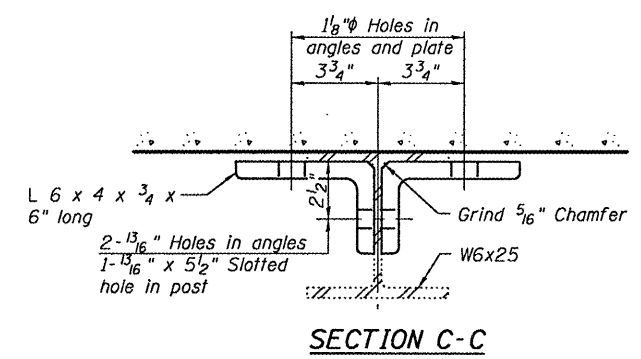
BEAM DETAILS
SN 036-0003

SHEET NO. 3 OF 4 SHEETS

F.A. RTE.	SECTION	COUNTY	TOTAL SHEETS	SHEET NO.
45	(6BR)I	Henderson	9	8C
CONTRACT NO. 68A17			ILLINOIS FED. AID PROJECT	



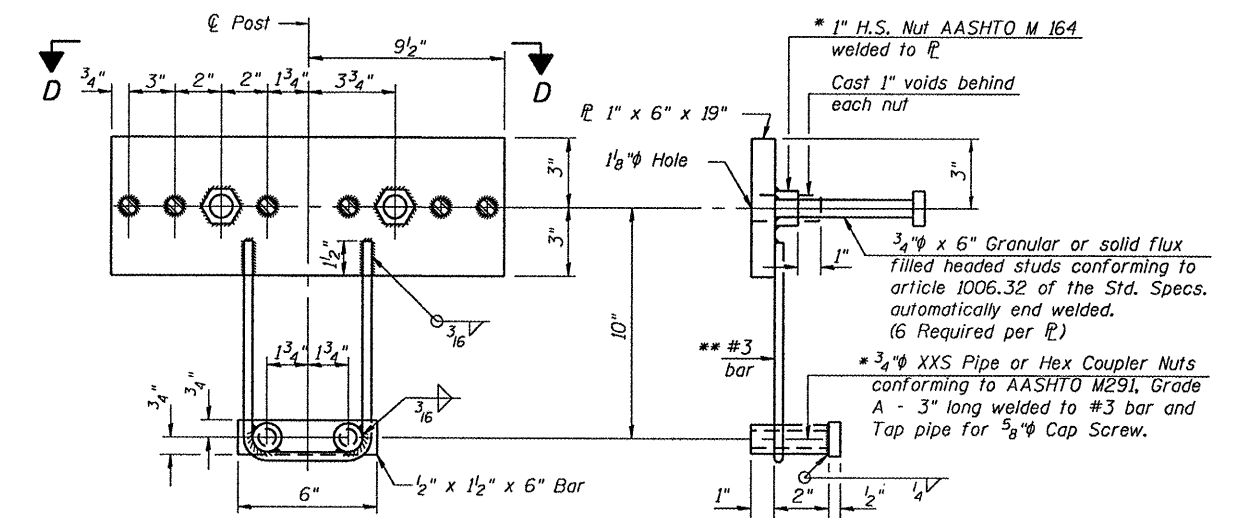
*** Cost included with Removing and Re-Erecting Existing Railing.



Notes:
 All field drilled holes shall be coated with an approved zinc rich paint before erection.
 For multi-span bridges, sufficient 1/4" x 6" x 1'-2" galvanized steel shims shall be provided to align rail between adjacent spans. Cost included with PPC Deck Beam (21" Depth).
 All steel rail members shall be galvanized according to Article 509.05 of the Standard Specifications.

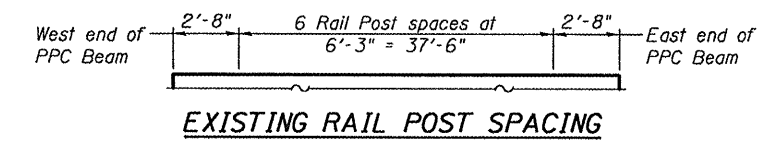
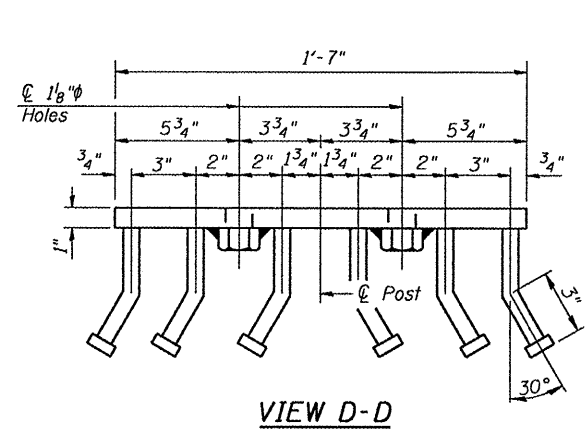
*** The studs of the anchor devices shall be placed below the top reinforcement bars and the outermost longitudinal reinforcement bar shall be placed directly above the studs of the rail post anchor device.

The cost of all labor and materials for removing, storing and reinstalling the existing posts and railing is included in the cost per foot for Removing and Re-Erecting Existing Railing.



* Threaded areas shall be plugged or blocked off during casting of beam. Galvanized after fabrication.

** Whenever the lower insert assemblies interfere with strand locations, the #3 bars shall be adjusted in order to allow raising or lowering of the lower inserts. Maximum adjustment not to exceed 1/2".

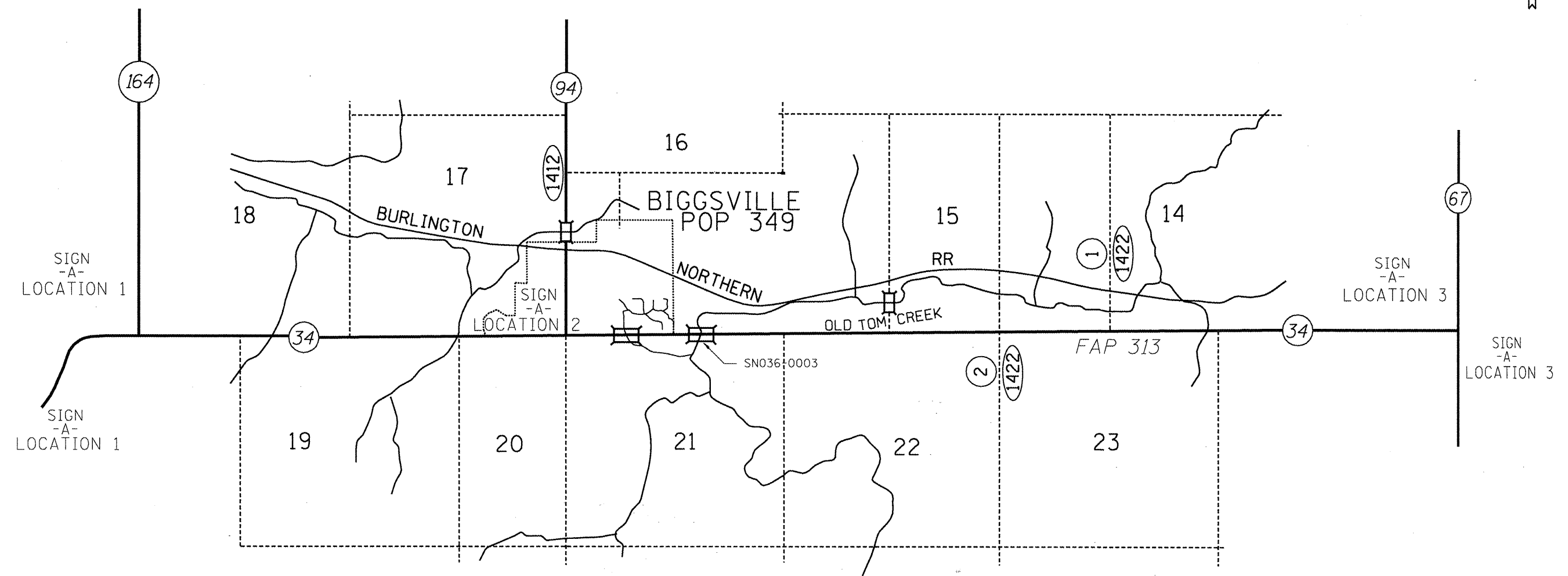


DESIGNED - V.H.V.	EXAMINED - <i>James F. [Signature]</i>	DATE - MARCH 14, 2011
CHECKED - I.J.L.	ACTING ENGINEER OF STRUCTURAL SERVICES	
DRAWN - Drew Christopher	PASSED - <i>Carl [Signature]</i>	
CHECKED - V.H.V. I.J.L.	ACTING ENGINEER OF BRIDGES AND STRUCTURES	

STATE OF ILLINOIS
 DEPARTMENT OF TRANSPORTATION

RAIL DETAILS
 SN 036-0003
 SHEET NO. 4 OF 4 SHEETS

F.A. RTE.	SECTION	COUNTY	TOTAL SHEETS	SHEET NO.
45	(6BR)I	Henderson	9	8D
CONTRACT NO. 8A17				
ILLINOIS FED. AID PROJECT				



SN.036-0003 SIGNING DISTANCES

	SIGN -A-	SIGN -B-
LOCATION 1	2 EA.	NA
LOCATION 2	1 EA.	
LOCATION 3	2 EA.	
LOCATION 4		

CONTRACTOR PROVIDED MAX. WIDTH
XX-XX
XX MILES SIGN -A-

IDOT PROVIDED US. 34

SEE SPECIAL PROVISIONS FOR SIGNING DETAILS.