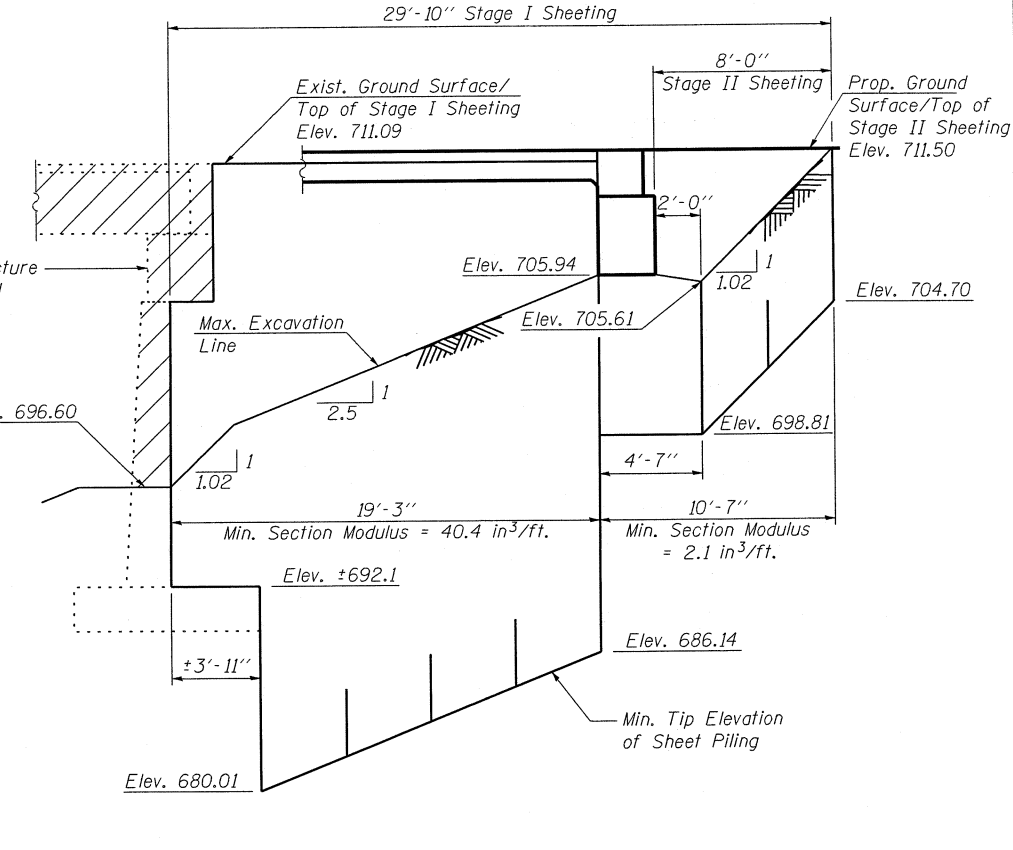
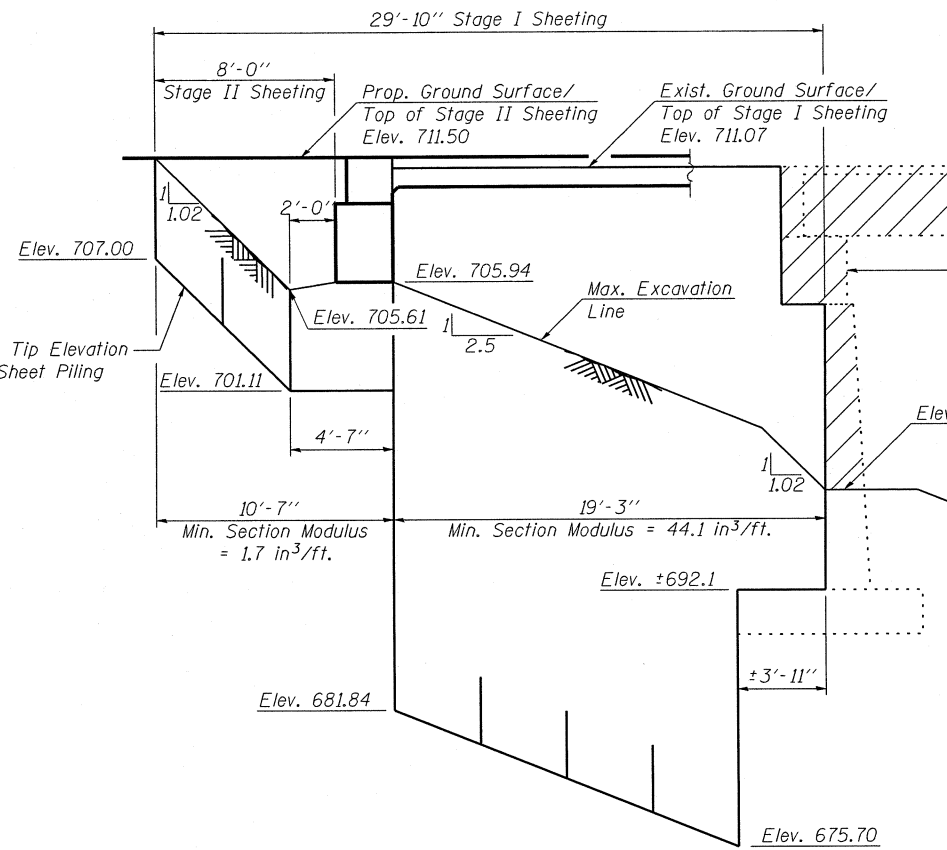
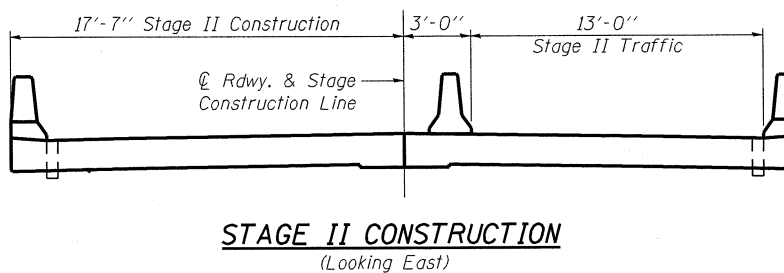
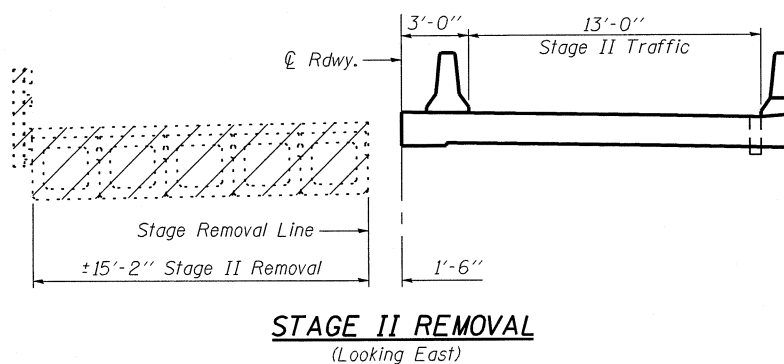
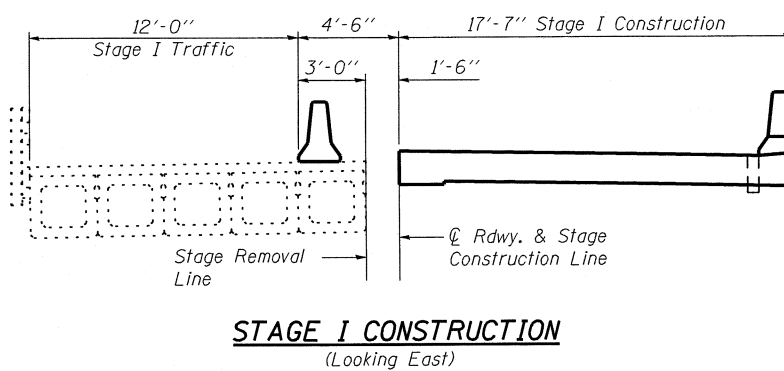
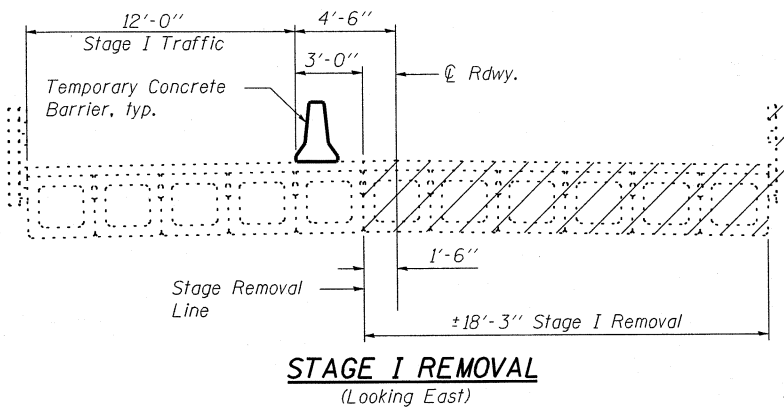


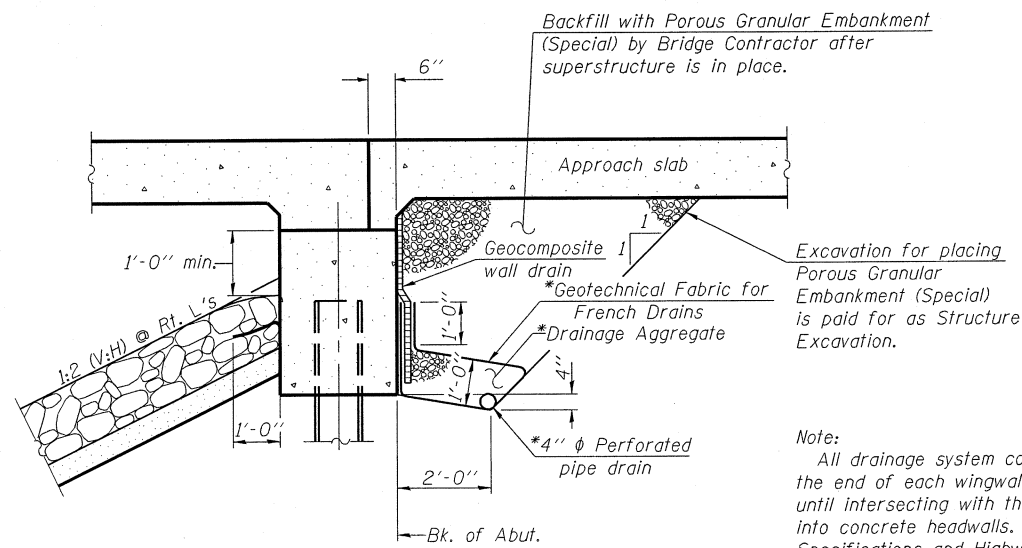
STATE OF ILLINOIS
DEPARTMENT OF TRANSPORTATION



BILL OF MATERIAL

Item	Unit	Total
Temporary Sheet Piling	Sq. Ft.	1257

TEMPORARY SHEET PILING DETAILS



Notes:
Slopes and horizontal dimensions are measured parallel to \odot roadway.
If the Contractor chooses to alter the temporary cantilevered sheet piling design requirements shown on the plans, a design submittal including plan details and calculations will be required for review and acceptance by the Engineer.
The Contractor shall connect the first sheet to the existing abutment wall to ensure stability of sheets driven to the top of the existing footing. This connection shall be reviewed and accepted by the Engineer and included in the cost for Temporary Sheet Piling.

Note:
All drainage system components shall extend to 2'-0" from the end of each wingwall except an outlet pipe shall extend until intersecting with the side slopes. The pipes shall drain into concrete headwalls. (See Article 601.05 of the Standard Specifications and Highway Standard 601101).

Staging Notes:
Hatched areas indicate Removal of Existing Structures.
Removal of existing bridge railing is included with Removal of Existing Structures.
For quantity and location of Temporary Concrete Barrier, see Roadway Plans.

DESIGNED - BAS
CHECKED - KEF
DRAWN - SGM
CHECKED - BAS

STAGING DETAILS
STRUCTURE NO. 074-0087

SHEET NO.	F.A.S. RTE.	SECTION	COUNTY	TOTAL SHEETS	SHEET NO.
16 SHEETS	1517	11BR-1	PIATT	48	19
			CONTRACT NO. 70613		
FED. ROAD DIST. NO. _ ILLINOIS FED. AID PROJECT					

*Included in the cost of Pipe Underdrains for Structures, 4".