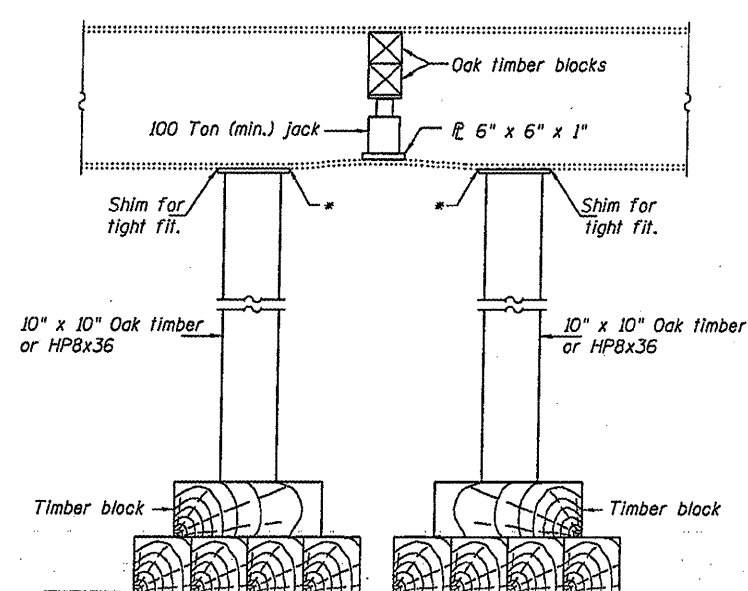
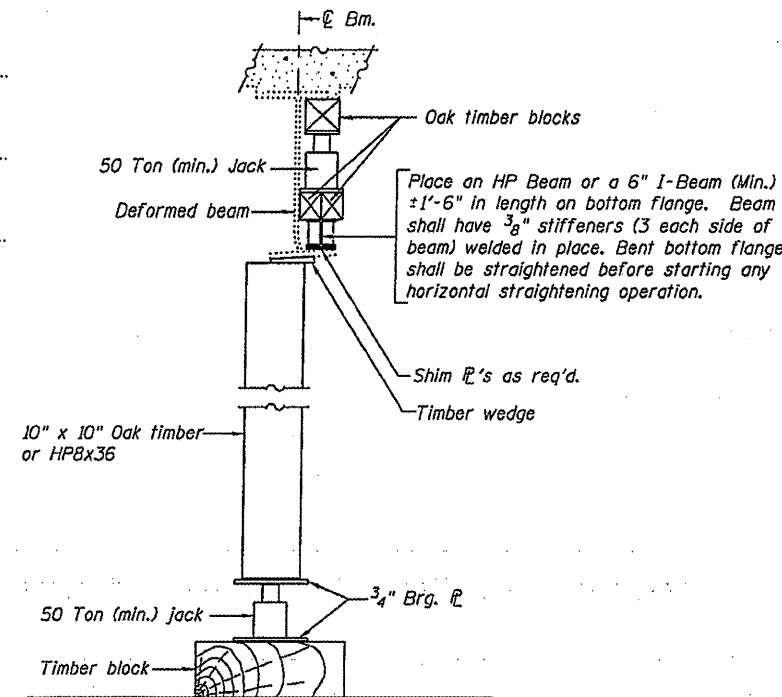
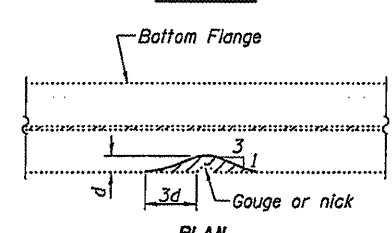
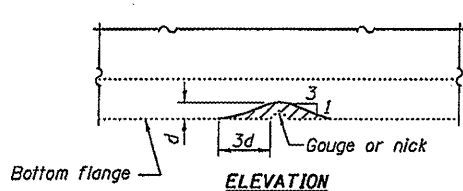
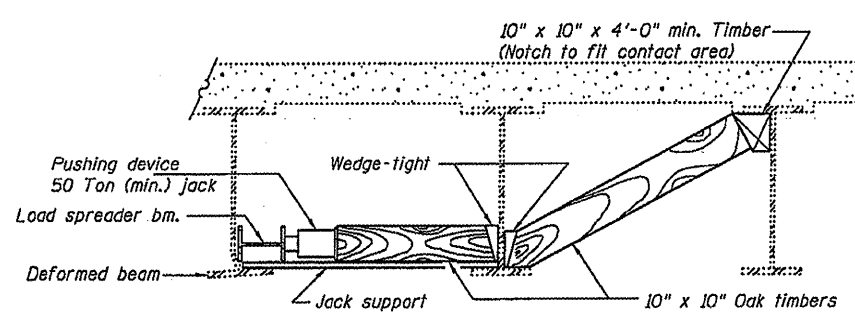
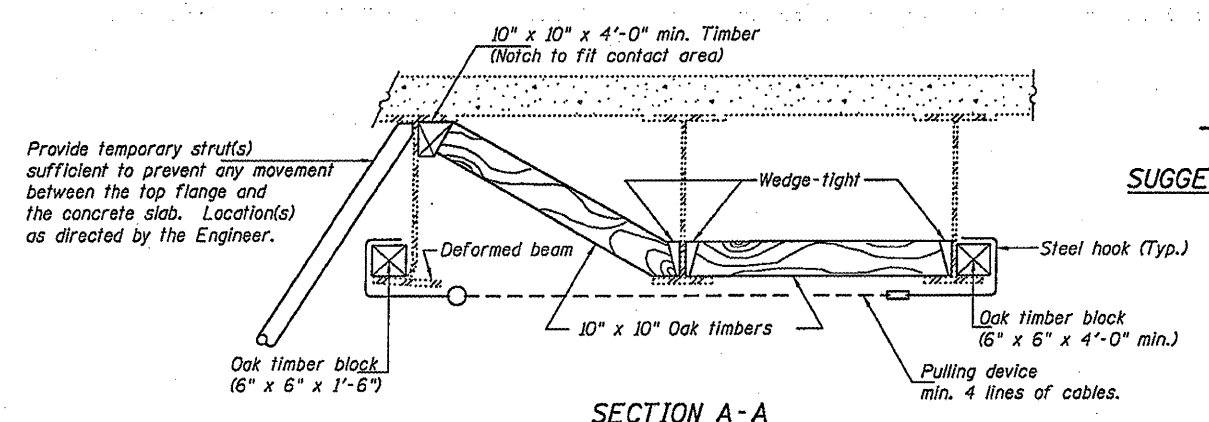


PARTIAL PLANS
SUGGESTED BEAM STRAIGHTENING METHODS
 Straightening force shall be maintained on all load transfer blocking during beam straightening.

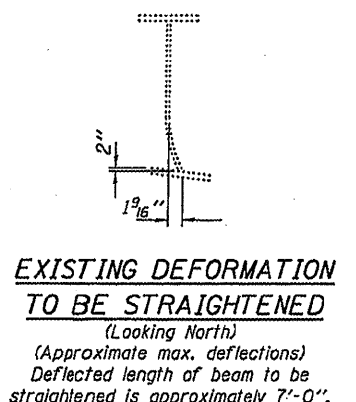


* Edge of plate shall line up with edge of deformation.
 Note:
 Braces and jack assembly shall be placed on same side of web.
 Bent bottom flange shall be straightened before starting any horizontal straightening operations.



GRINDING DETAIL

Grind existing nicks, gouges and shallow cracks in the damaged beams as detailed. Ground surfaces shall be inspected for cracks using magnetic particle testing prior to initiating any beam straightening operations. Any cracks that cannot be removed by grinding approximately 1/4" deep shall be identified and reported to the Bureau of Bridges and Structures for further disposition. Ground surfaces shall be spot cleaned and painted with an aluminum epoxy-mastic primer followed by a finish coat to match the color of the existing beam. Cost of grinding, testing and spot painting included with Beam Straightening.



REP-11-14-2005

DESIGNED VHV	EXAMINED	DATE MARCH 11, 2011
CHECKED ATH	PASSED	
DRAWN Baliva		
CHECKED VHV ATH		

STATE OF ILLINOIS
 DEPARTMENT OF TRANSPORTATION

REPAIR DETAILS
 SN 010-0146

F.A.I. RTE.	SECTION	COUNTY	TOTAL SHEETS	SHEET NO.
72	410-TIMBIBOR,BJR	CHAMPAIGN	14	8
CONTRACT NO. 70865			ILLINOIS FED. AID PROJECT	

SHEET 2 OF 3 SHEETS