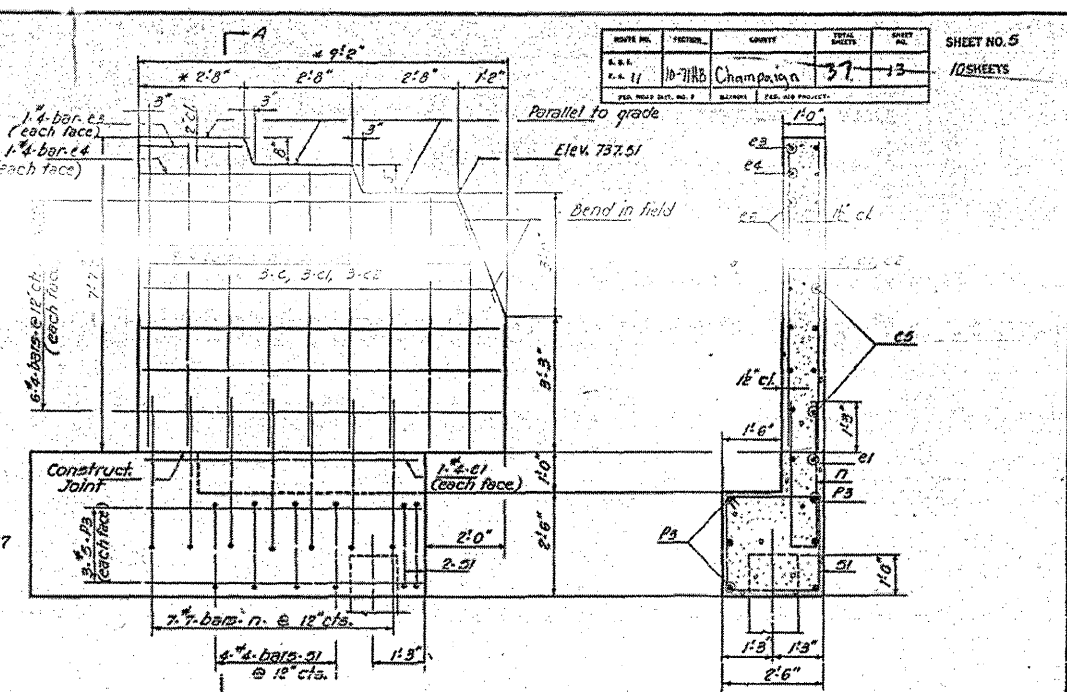
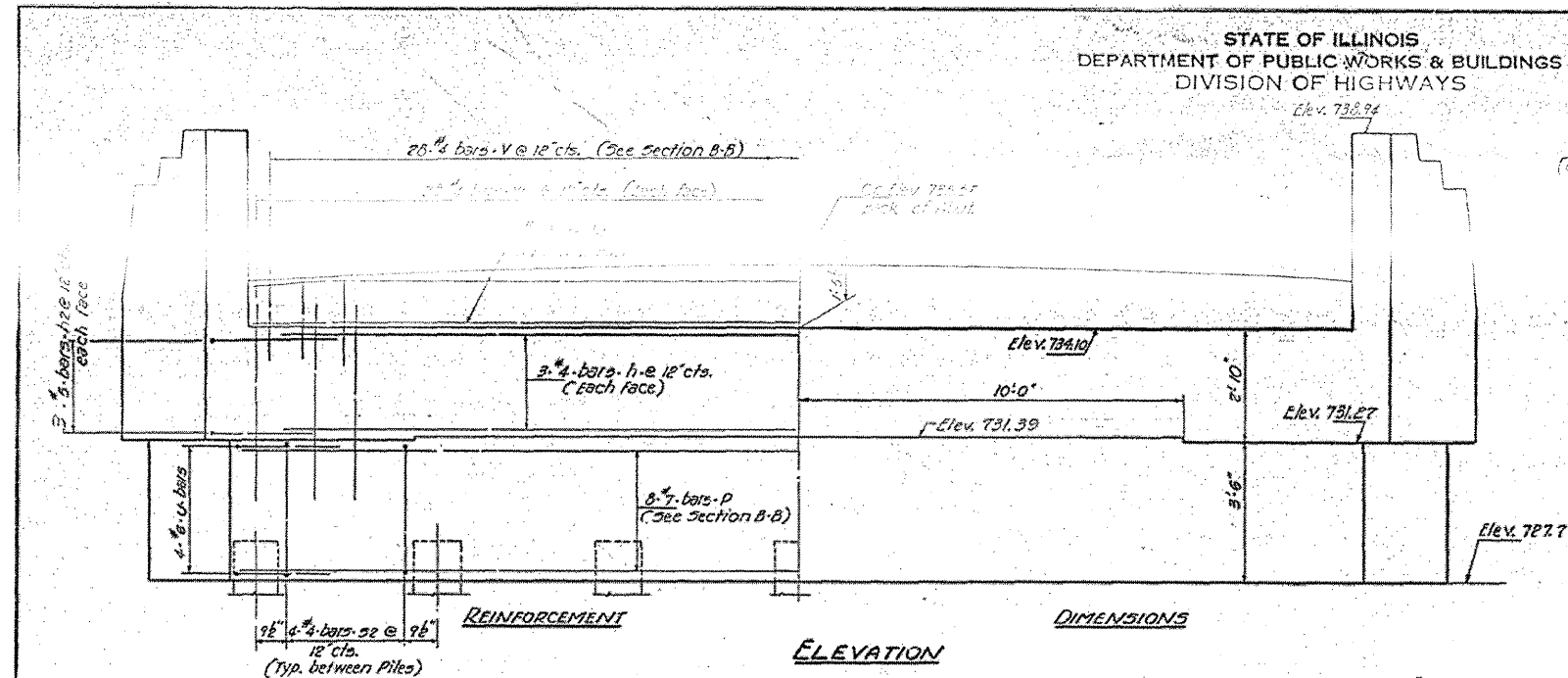
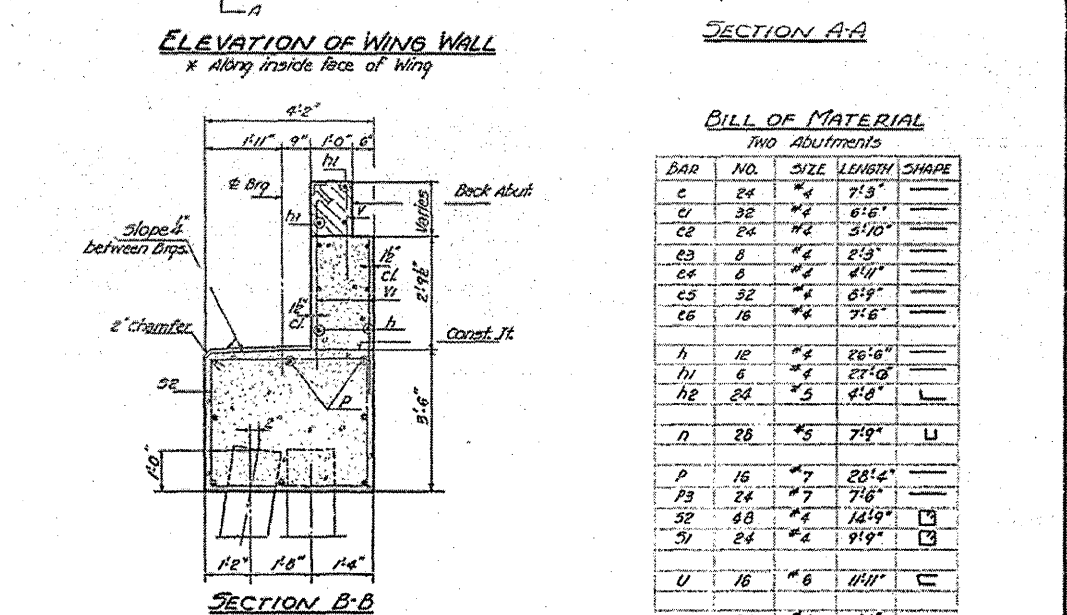
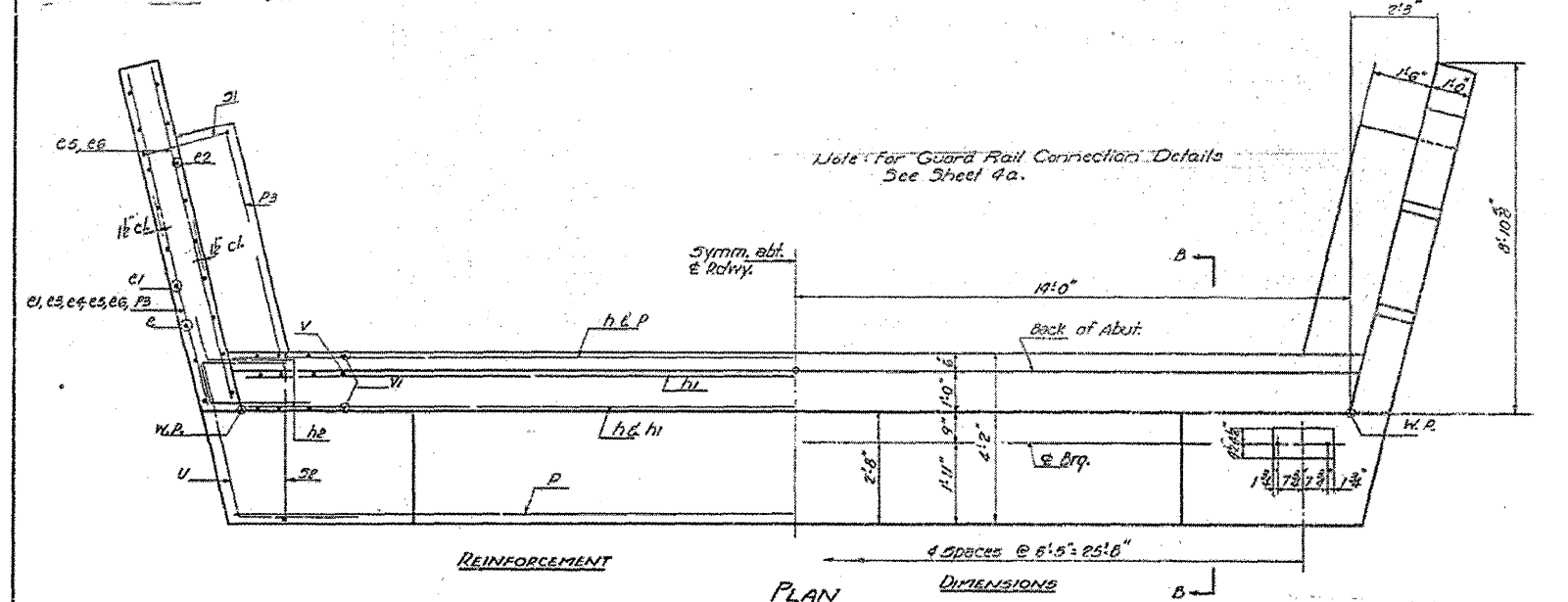


# AS-BUILT PLANS FOR INFORMATION ONLY

STATE OF ILLINOIS  
DEPARTMENT OF PUBLIC WORKS & BUILDINGS  
DIVISION OF HIGHWAYS



REVISE NO.	SECTION	QUANTITY	DATE	BY	SHEET NO.
1	10-71HB	Champaign	37	13	10 SHEETS



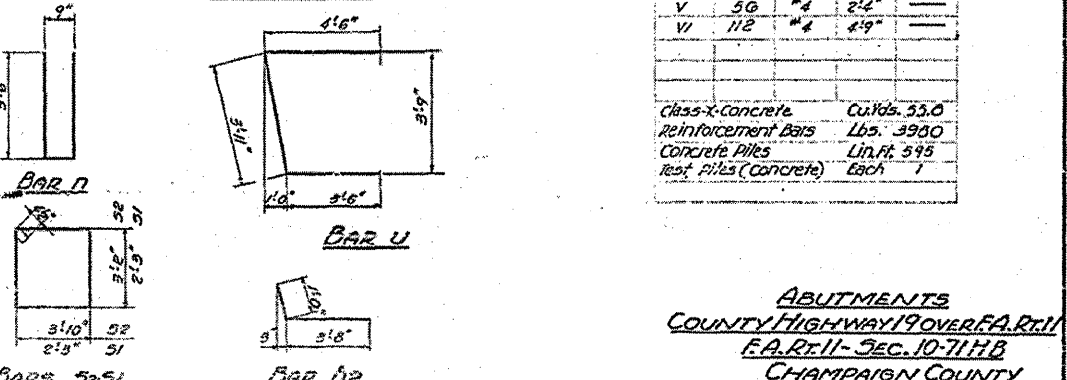
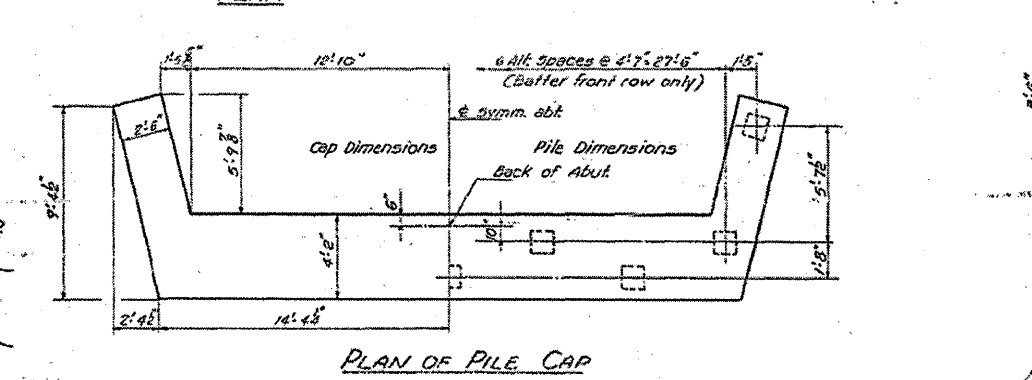
**BILL OF MATERIAL**  
TWO Abutments

BAR NO.	SIZE	LENGTH	SHAPE
C	24	#4	7'-3"
C1	32	#4	6'-6"
C2	24	#4	3'-10"
C3	8	#4	2'-9"
C4	8	#4	4'-4"
C5	52	#4	6'-9"
C6	16	#4	7'-6"
H	12	#4	26'-6"
H1	6	#4	27'-0"
H2	24	#5	4'-8"
N	28	#5	7'-9"
P	16	#7	28'-4"
P3	24	#7	7'-6"
S2	48	#4	14'-9"
S1	24	#4	9'-9"
U	16	#6	11'-11"
V	56	#4	2'-4"
V1	112	#4	4'-9"

**PILE DATA**  
Type: Concrete  
Capacity: 30 Tons Min.  
Esl. Length: 35 FT.  
No. Reqd: 18 (Includes 1 Test Pile)

DESIGNED: P.H. Hagen  
CHECKED: P.H. Hagen  
DRAWN: P.H. Hagen  
CHECKED: P.H. Hagen

MARCH 29 1962  
EXAMINED: H.G. Beumann  
PASSED: [Signature]  
APPROVED: R.L. [Signature]



Class-X Concrete Coids. 53.0  
Reinforcement Bars Lbs. 3900  
Concrete Piles Lin. Ft. 595  
Test Piles (Concrete) Each 1

**ABUTMENTS**  
COUNTY HIGHWAY 19 OVER F.A.R.T.I.  
F.A.R.T.I. - SEC. 10-71HB  
CHAMPAIGN COUNTY  
STATION 1780+09.74