

STATE OF ILLINOIS  
 DEPARTMENT OF TRANSPORTATION  
 DIVISION OF HIGHWAYS

**PROPOSED  
 HIGHWAY PLANS**

FAP ROUTE 326 (IL. 47)  
 SECTION 10-4TS  
 TRAFFIC SIGNAL INSTALLATION  
 CHAMPAIGN COUNTY

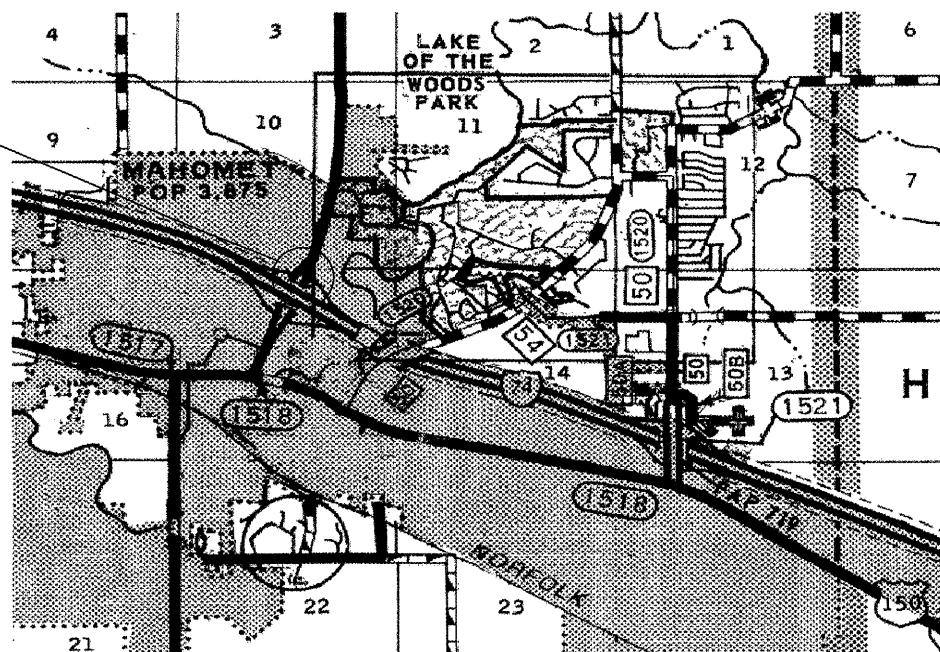
C-95-066-10

F.A.P. RTE.	SECTION	COUNTY	TOTAL SHEETS	SHEET NO.
326	10-4TS	CHAMPAIGN	8	1
		ILLINOIS	CONTRACT NO. 70889	

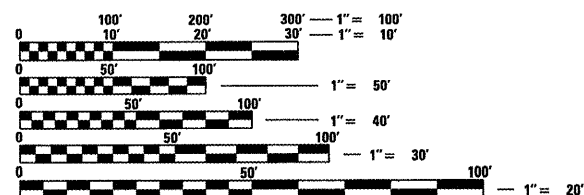
FOR INDEX OF SHEETS, SEE SHEET NO. 2



TRAFFIC SIGNAL INSTALLATION  
 SECTION 10-4TS  
 IL 47 & I-74 NORTH RAMP



VILLAGE OF MAHOMET



FULL SIZE PLANS HAVE BEEN PREPARED USING STANDARD ENGINEERING SCALES. REDUCED SIZED PLANS WILL NOT CONFORM TO STANDARD SCALES. IN MAKING MEASUREMENTS ON REDUCED PLANS, THE ABOVE SCALES MAY BE USED.

J.U.L.I.E.  
 JOINT UTILITY LOCATION INFORMATION FOR EXCAVATION  
 1-800-892-0123  
 OR 811

PROJECT ENGINEER: SCOTT NEIHART  
 PROJECT MANAGER: ROGER BIGGS

CONTRACT NO. 70889

STATE OF ILLINOIS  
 DEPARTMENT OF TRANSPORTATION  
 DIVISION OF HIGHWAYS

SUBMITTED 2/4 20 11

*Joyce A. Cooney*  
 DEPUTY DIRECTOR OF HIGHWAYS, REGION ENGINEER

March 25 20 11  
*Scott E. Stitt P.E.*  
 acting ENGINEER OF DESIGN AND ENVIRONMENT

March 25 20 11  
*Christine M. Reed*  
 DIRECTOR OF HIGHWAYS, CHIEF ENGINEER

PRINTED BY THE AUTHORITY  
 OF THE STATE OF ILLINOIS

GENERAL NOTES

G.N.-100

ENGLISH UNITS OF MEASUREMENT SHALL GOVERN OVER AND SUPERSEDE ANY METRIC UNITS SHOWN IN THIS CONTRACT. WHERE INCLUDED, METRIC UNITS ARE FOR INFORMATION ONLY.

G.N.-105.07

EXISTING STATE-OWNED AND MAINTAINED UTILITY LINES ARE SHOWN ON THE PLANS TO INDICATE THEIR PRESENCE AND APPROXIMATE LOCATION. THE CONTRACTOR SHALL NOTIFY THE DISTRICT OPERATIONS ENGINEER TWO WEEKS PRIOR TO COMMENCING ANY EXCAVATION IN THE VICINITY OF THESE LINES. THE STATE WILL THEN LOCATE AND MARK THE HORIZONTAL LOCATIONS OF THE LINES AND PROVIDE ANY AVAILABLE INFORMATION AS TO THEIR DEPTH. SHOULD ANY OF THE LINES BE DAMAGED BY THE CONTRACTOR'S OPERATION, THE CONTRACTOR SHALL REPAIR THEM TO THE SATISFACTION OF THE ENGINEER AND AT NO COST TO THE STATE.

ALSO THERE MAY BE UTILITIES PRESENT WHICH WERE INSTALLED BY THE STATE BUT ARE MAINTAINED BY OTHERS (CITY, TOWN, ETC.) THE APPROXIMATE LOCATIONS OF THESE LINES ARE ALSO SHOWN ON THE PLANS ALONG WITH THE NAME OF THE MAINTAINING AGENCY. THE CONTRACTOR SHALL COORDINATE THE LOCATING OF THESE LINES WITH THE LOCAL AGENCY PRIOR TO COMMENCING ANY EXCAVATION OR BORING IN THEIR VICINITY. SHOULD THESE LINES BE DAMAGED BY THE CONTRACTOR'S OPERATIONS, THE CONTRACTOR SHALL REPAIR THEM TO THE SATISFACTION OF, AND AT NO COST TO, THE LOCAL AGENCY AND THE STATE.

G.N.-107.31

UTILITY LINES WERE PLOTTED FROM INFORMATION FURNISHED BY THE VARIOUS UTILITY COMPANIES INVOLVED (QUALITY LEVEL C &/OR QUALITY LEVEL D) AND THE ACCURACY SHOULD BE CONSIDERED APPROXIMATE ONLY.

UTILITY COMPANIES MAY BE ADJUSTING THEIR FACILITIES DURING CONSTRUCTION. THE CONTRACTOR SHALL COOPERATE WITH THESE ORGANIZATIONS WHILE THESE ADJUSTMENTS ARE BEING PERFORMED. J.U.L.I.E. - JOINT UTILITY LOCATION INFORMATION FOR EXCAVATORS SYSTEM (800)892-0123 OR 811.

G.N.-1004.01

COARSE AGGREGATE GRADATION CA-10 MAY BE USED WHENEVER COARSE AGGREGATE CA-6 IS SPECIFIED IN THE STANDARD SPECIFICATIONS.

STANDARDS IN THE PLANS

STANDARD	DESCRIPTION
000001-06	STANDARD SYMBOLS, ABBREVIATIONS AND PATTERNS
001001-02	AREAS OF REINFORCEMENT BARS
001006	DECIMAL OF AN INCH AND OF A FOOT
701406-06	LANE CLOSURE FREEWAY DAY ONLY
701701-07	URBAN LANE CLOSURE MULTILANE INTERSECTION
701901-01	TRAFFIC CONTROL DEVICES
805001-01	ELECTRIC SERVICE INSTALLATION DETAILS
814001-02	HANDHOLES
814006-02	DOUBLE HANDHOLES
857001-01	STANDARD PHASE DESIGNATION DIAGRAMS AND PHASE SEQUENCE
873001-02	TRAFFIC SIGNAL GROUNDING AND BONDING
877001-04	STEEL MAST ARM ASSEMBLY AND POLE
878001-08	CONCRETE FOUNDATION DETAILS
880006-01	TRAFFIC SIGNAL MOUNTING DETAILS - POST AND BRACKET MOUNT
886001-01	DETECTOR LOOP INSTALLATIONS
886006-01	TYPICAL LAYOUTS FOR DETECTION LOOPS

INDEX OF SHEETS

- 1 COVER SHEET
- 2 GENERAL NOTES, STANDARDS IN THE PLANS, INDEX
- 3 SUMMARY OF QUANTITIES
- 4 - 6 TRAFFIC SIGNAL PLAN SHEETS
- 7 - 8 TRAFFIC SIGNAL DETAILS

FILE NAME *	USER NAME *	DESIGNED -	REVISED -	<b>STATE OF ILLINOIS DEPARTMENT OF TRANSPORTATION</b>	F.A.P. RTE.	SECTION	COUNTY	TOTAL SHEETS	SHEET NO.
et:\pw\work\pwi\d01\biggsrd\02256410\057069-Design.dgn	biggsrd	DRAWN -	REVISED -		326	10-4TS	CHAMPAIGN	8	2
PLOT SCALE = 40.0000 "/ IN.		CHECKED -	REVISED -		CONTRACT NO. 70889				
PLOT DATE = 2/4/2011		DATE -	REVISED -		ILLINOIS FED. AID PROJECT				
				SCALE:	SHEET NO. OF SHEETS		STA. TO STA.		

## SUMMARY OF QUANTITIES

LOCATION OF WORK:

FAP 326  
IL 47  
&  
I-74 WB RAMPS

100% State

CONSTRUCTION TYPE CODE:

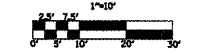
0021

CODE NO	ITEM	EQUIPMENT	UNIT	TOTAL QUANTITY	QUANTITY
87301900	ELECTRIC CABLE IN CONDUIT, GROUNDING CONDUCTOR, NO. 6 1C		FOOT	448.0	448.0
67100100	MOBILIZATION		L SUM	1.0	1.0
70100700	TRAFFIC CONTROL AND PROTECTION, STANDARD 701406		L SUM	1.0	1.0
70102635	TRAFFIC CONTROL AND PROTECTION, STANDARD 701701		L SUM	1.0	1.0
78000650	THERMOPLASTIC PAVEMENT MARKING-LINE 24"		FOOT	76.0	76.0
80500100	SERVICE INSTALLATION, TYPE A		EACH	1.0	1.0
81012300	CONDUIT IN TRENCH, 1" DIA., PVC		FOOT	23.0	23.0
81012500	CONDUIT IN TRENCH, 1 1/2" DIA., PVC		FOOT	845.0	845.0
81012600	CONDUIT IN TRENCH, 2" DIA., PVC		FOOT	143.0	143.0
81012700	CONDUIT IN TRENCH, 2 1/2" DIA., PVC		FOOT	15.0	15.0
81013100	CONDUIT IN TRENCH, 5" DIA., PVC		FOOT	4.0	4.0
81021350	CONDUIT PUSHED, 3" DIA., PVC		FOOT	270.0	270.0
81400100	HANDHOLE		EACH	5.0	5.0
81400300	DOUBLE HANDHOLE		EACH	1.0	1.0
81500100	GULFBOX JUNCTION		EACH	2.0	2.0
81900200	TRENCH AND BACKFILL FOR ELECTRICAL WORK		FOOT	1,006.0	1,006.0
85700200	FULL-ACTUATED CONTROLLER AND TYPE IV CABINET		EACH	1.0	1.0
86200200	UNINTERRUPTIBLE POWER SUPPLY, STANDARD		EACH	1.0	1.0
87301245	ELECTRIC CABLE IN CONDUIT, SIGNAL NO. 14 5C		FOOT	1,248.0	1,248.0
87301255	ELECTRIC CABLE IN CONDUIT, SIGNAL NO. 14 7C		FOOT	252.0	252.0
87301515	ELECTRIC CABLE IN CONDUIT, LEAD-IN, NO. 18 3 PAIR		FOOT	1,839.0	1,839.0
87301805	ELECTRIC CABLE IN CONDUIT, SERVICE, NO. 6 2C		FOOT	36.0	36.0
87502660	TRAFFIC SIGNAL POST, ALUMINUM 12 FT.		EACH	3.0	3.0
87502680	TRAFFIC SIGNAL POST, ALUMINUM 14 FT.		EACH	1.0	1.0
87700200	STEEL MAST ARM ASSEMBLY AND POLE, 32 FT.		EACH	1.0	1.0
87700290	STEEL MAST ARM ASSEMBLY AND POLE, 50 FT.		EACH	1.0	1.0
87800100	CONCRETE FOUNDATION, TYPE A		FOOT	12.4	12.4
87800200	CONCRETE FOUNDATION, TYPE D		FOOT	3.5	3.5
87800415	CONCRETE FOUNDATION, TYPE E 36-INCH DIAMETER		FOOT	26.0	26.0
88040070	SIGNAL HEAD, POLYCARBONATE, LED, 1-FACE, 3-SECTION, BRACKET MOUNTED		EACH	7.0	7.0
88040090	SIGNAL HEAD, POLYCARBONATE, LED, 1-FACE, 3-SECTION, MAST ARM MOUNTED		EACH	3.0	3.0
88040150	SIGNAL HEAD, POLYCARBONATE, LED, 1-FACE, 5-SECTION, BRACKET MOUNTED		EACH	1.0	1.0
88040160	SIGNAL HEAD, POLYCARBONATE, LED, 1-FACE, 5-SECTION, MAST ARM MOUNTED		EACH	1.0	1.0
88200100	TRAFFIC SIGNAL BACKPLATE		EACH	4.0	4.0
88500100	INDUCTIVE LOOP DETECTOR		EACH	6.0	6.0
88600100	DETECTOR LOOP, TYPE I		FOOT	330.0	330.0
X7015005	CHANGEABLE MESSAGE SIGN		CAL DA	9.0	9.0

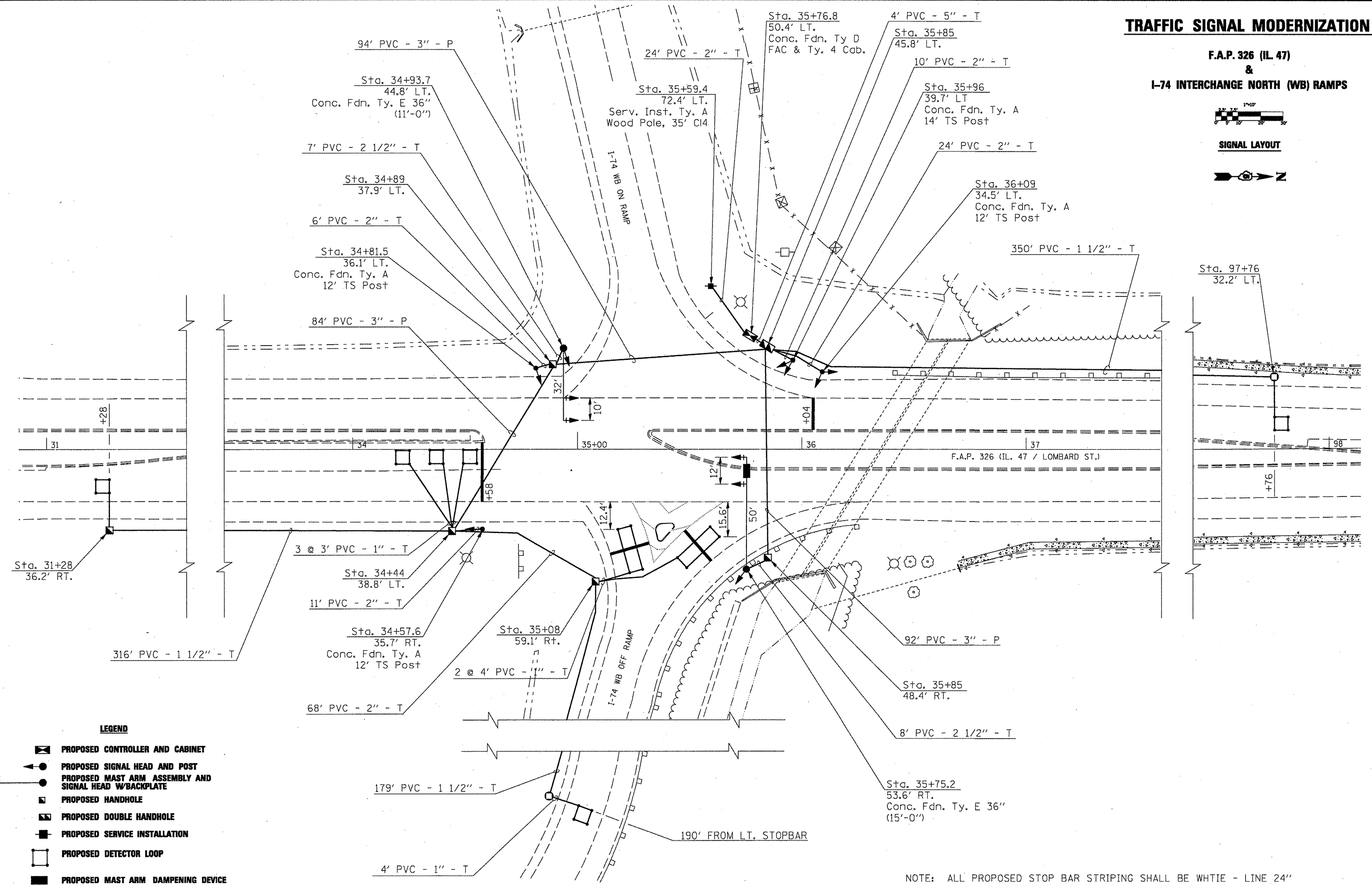
FILE NAME =	USER NAME = biggard	DESIGNED - RDB	REVISED -	<b>STATE OF ILLINOIS DEPARTMENT OF TRANSPORTATION</b>	F.A.P. RTE.	SECTION	COUNTY	TOTAL SHEETS	SHEET NO.	
at:\p\work\p\widot\biggard\d0256410\057089-Design.dgn		DRAWN - RDB	REVISED -		326	10-4TS	CHAMPAIGN	8	3	
PLOT SCALE = 40.0000" / IN.		CHECKED -	REVISED -		CONTRACT NO. 70889					
PLOT DATE = 2/4/2011		DATE -	REVISED -		[ILLINOIS] FED. AID PROJECT					
					SCALE:	SHEET NO.	OF	SHEETS	STA.	TO STA.

**TRAFFIC SIGNAL MODERNIZATION**

F.A.P. 326 (IL. 47)  
&  
I-74 INTERCHANGE NORTH (WB) RAMPS



SIGNAL LAYOUT



**LEGEND**

- PROPOSED CONTROLLER AND CABINET
- PROPOSED SIGNAL HEAD AND POST
- PROPOSED MAST ARM ASSEMBLY AND SIGNAL HEAD W/BACKPLATE
- PROPOSED HANDHOLE
- PROPOSED DOUBLE HANDHOLE
- PROPOSED SERVICE INSTALLATION
- PROPOSED DETECTOR LOOP
- PROPOSED MAST ARM DAMPENING DEVICE

FILE NAME =	USER NAME = biggsrd	DESIGNED - RDB	REVISED -
c:\pwwork\pwwork\biggsrd\0296410\0570889-Design.dgn		DRAWN - RDB	REVISED -
PLOT SCALE = 48.0000' / IN.		CHECKED -	REVISED -
PLOT DATE = 2/17/2011		DATE -	REVISED -

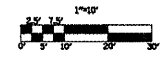
**STATE OF ILLINOIS  
DEPARTMENT OF TRANSPORTATION**

SCALE:	SHEET NO.	OF SHEETS	STA.	TO STA.
--------	-----------	-----------	------	---------

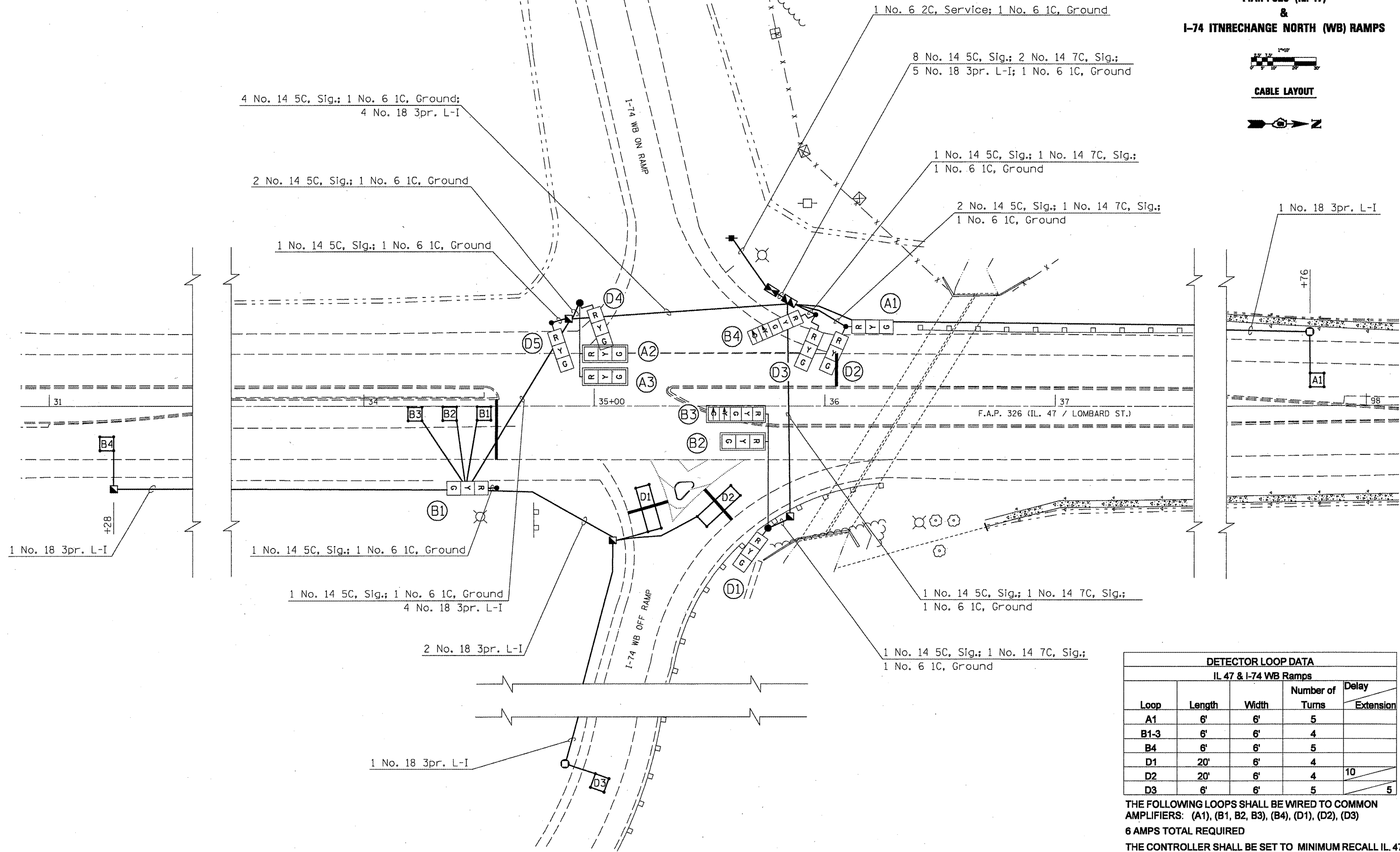
F.A.P. RTE.	SECTION	COUNTY	TOTAL SHEETS	SHEET NO.
326	10-4TS	CHAMPAIGN	8	4
CONTRACT NO. 70889			ILLINOIS FED. AID PROJECT	

# TRAFFIC SIGNAL MODERNIZATION

F.A.P. 326 (IL. 47)  
&  
I-74 INTERCHANGE NORTH (WB) RAMPS



CABLE LAYOUT



DETECTOR LOOP DATA				
IL 47 & I-74 WB Ramps				
Loop	Length	Width	Number of Turns	Delay Extension
A1	6'	6'	5	
B1-3	6'	6'	4	
B4	6'	6'	5	
D1	20'	6'	4	
D2	20'	6'	4	10
D3	6'	6'	5	5

THE FOLLOWING LOOPS SHALL BE WIRED TO COMMON AMPLIFIERS: (A1), (B1, B2, B3), (B4), (D1), (D2), (D3)  
6 AMPS TOTAL REQUIRED  
THE CONTROLLER SHALL BE SET TO MINIMUM RECALL IL. 47

FILE NAME =	USER NAME = bsggd	DESIGNED - RDB	REVISED -
ca:\pwork\pwork\dot\bsggd\0206410\057089-Design.dgn		DRAWN - RDB	REVISED -
PLOT SCALE = 40.0000" / IN.		CHECKED -	REVISED -
PLOT DATE = 2/18/2011		DATE -	REVISED -

**STATE OF ILLINOIS  
DEPARTMENT OF TRANSPORTATION**

SCALE:	SHEET NO.	OF	SHEETS	STA.	TO STA.
--------	-----------	----	--------	------	---------

F.A.P. RTE.	SECTION	COUNTY	TOTAL SHEETS	SHEET NO.
326	10-4TS	CHAMPAIGN	8	5
CONTRACT NO. 70889				
ILLINOIS FED. AID PROJECT				

**SCHEDULES**

**CONCRETE FOUNDATION, TYPE A**

Sta. 34+57.6; 35.7' RT.	3.1	FOOT
Sta. 34+81.5; 36.1' LT.	3.1	FOOT
Sta. 35.96.0; 34.5' LT.	3.1	FOOT
Sta. 36+09.0; 34.5' LT.	3.1	FOOT

TOTAL = 12.4 FOOT

**CONCRETE FOUNDATION, TYPE E 36 INCH DIA.**

Sta. 34+93.7; 44.8' LT.	11	FOOT
Sta. 35+75.2; 53.6' RT.	15	FOOT

TOTAL = 26 FOOT

**HANDHOLE**

Sta. 31+28; 36.2' RT.	1	
Sta. 34+44; 38.8' RT.	1	
Sta. 35+08; 59.1' RT.	1	
Sta. 34+89; 37.9' LT.	1	
Sta. 34+85; 48.4' RT.	1	

TOTAL = 5 EACH

**TRAFFIC SIGNAL POST, ALUMINUM, 12 FT.**

Sta. 34+57.6; 35.7' RT.	1	EACH
Sta. 34+81.5; 36.1' LT.	1	EACH
Sta. 36+09.0; 34.5' LT.	1	EACH

TOTAL = 3 EACH

**TRAFFIC SIGNAL POST, ALUMINUM, 14 FT.**

Sta. 35+96.0; 39.7' LT.	1	EACH
-------------------------	---	------

**GULFBOX JUNCTION**

Ramp Approach	1	FOOT
Sta. 97+76; 32.2' RT.	1	FOOT

TOTAL = 2 FOOT

**THERMOPLASTIC PAVMENT MARKING - LINE 24"**

NB APPROACH	26	FOOT
SB APPROACH	14	FOOT
RAMP APPROACH LT.	18	FOOT
RAMP APPROACH RT.	18	FOOT

TOTAL = 76 FOOT

**GENERAL NOTES**

1. THE FINAL LOCATIONS OF ALL TRAFFIC CONTROL ITEMS SHALL BE VERIFIED BY THE ENGINEER IN THE FIELD.
2. ALL TRAFFIC SIGNAL MAST ARMS MUST BE DESIGNED FOR THE LOADINGS SHOWN ON THE HIGHWAY STANDARDS OR THESE SIGNAL PLANS, WHICHEVER IS GREATER.
3. SIGNAL FACES FOR THE NORTH APPROACH ARE NOTED AS "A", "B" FOR THE SOUTH APPROACH, "C" FOR THE WEST APPROACH, AND "D" FOR THE EAST APPROACH.
4. THE CONTRACTOR SHALL BE RESPONSIBLE FOR OBTAINING ELECTRICAL SERVICE FOR THE TRAFFIC SIGNALS. THE CONTRACTOR SHALL CONTACT THE UTILITY COMPANY PRIOR TO COMMENCEMENT OF WORK TO OBTAIN UTILITY COMPANY REQUIREMENTS FOR THE SERVICE INSTALLATION

**BILL OF MATERIALS**

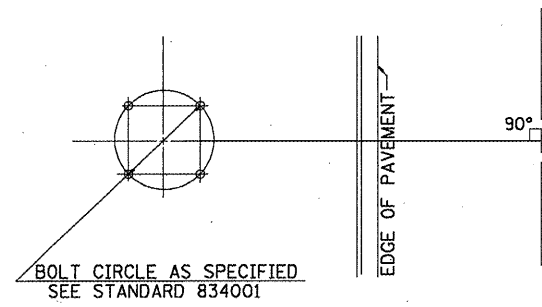
IL. 47 & I-74 WB RAMPS

ITEM	UNIT	QUANTITY
ELECTRIC CABLE IN CONDUIT, GROUND, NO. 6 1C (GREEN)	FOOT	448
SERVICE INSTALLATION, TYPE A	EACH	1
CONDUIT IN TRENCH, 1" DIA., PVC	FOOT	23
CONDUIT IN TRENCH, 1 1/2" DIA., PVC	FOOT	845
CONDUIT IN TRENCH, 2" DIA., PVC	FOOT	143
CONDUIT IN TRENCH, 2 1/2" DIA., PVC	FOOT	15
CONDUIT IN TRENCH, 5" DIA., PVC	FOOT	4
CONDUIT PUSHED, 3" DIA., PVC	FOOT	270
HANDHOLE	EACH	5
DOUBLE HANDHOLE	EACH	1
GULFBOX JUNCTION	EACH	2
TRENCH AND BACKFILL FOR ELECTRICAL WORK	FOOT	1006
FULL-ACTUATED CONTROLLER AND TYPE IV CABINET	EACH	1
UNINTERRUPTIBLE POWER SUPPLY	EACH	1
ELECTRIC CABLE IN CONDUIT, SIGNAL NO. 14 5C	FOOT	1248
ELECTRIC CABLE IN CONDUIT, SIGNAL NO. 14 7C	FOOT	252
ELECTRIC CABLE IN CONDUIT, LEAD-IN, NO. 18 3 PAIR	FOOT	1839
ELECTRIC CABLE IN CONDUIT, SERVICE NO. 6 2C	FOOT	36
TRAFFIC SIGNAL POST, ALUMINUM 12 FT.	EACH	3
TRAFFIC SIGNAL POST, ALUMINUM 14 FT.	EACH	1
STEEL MAST ARM ASSEMBLY AND POLE, 32 FT.	EACH	1
STEEL MAST ARM ASSEMBLY AND POLE, 50 FT.	EACH	1
CONCRETE FOUNDATION, TYPE A	FOOT	12.4
CONCRETE FOUNDATION, TYPE D	FOOT	3.5
CONCRETE FOUNDATION, TYPE E 36-INCH DIAMETER	FOOT	26
SIGNAL HEAD, POLYCARBONATE, LED, 1-FACE, 3-SECTION, BRACKET MOUNTED	EACH	7
SIGNAL HEAD, POLYCARBONATE, LED, 1-FACE, 3-SECTION, MAST ARM MOUNTED	EACH	3
SIGNAL HEAD, POLYCARBONATE, LED, 1-FACE, 5-SECTION, BRACKET MOUNTED	EACH	1
SIGNAL HEAD, POLYCARBONATE, LED, 1-FACE, 5-SECTION, MAST ARM MOUNTED	EACH	1
TRAFFIC SIGNAL BACKPLATE	EACH	4
INDUCTIVE LOOP DETECTOR	EACH	5
DETECTOR LOOP, TYPE I	FOOT	330

**GENERAL NOTES**

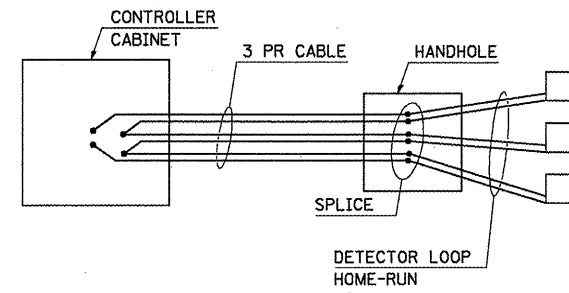
1. THE FOLLOWING SIGNAL HEADS SHALL BE WIRED IN PARALLEL AT THE MAST POLE HANDHOLE: (A2, A3), (B2, B3) - EACH MAST ARM MOUNTED SIGNAL HEAD SHALL HAVE ITS OWN INDIVIDUAL CABLE FROM THE MAST POLE HANDHOLE TO THE SIGNAL HEAD.
2. THE ACTUAL LOCATION OF ALL SIGNAL FOUNDATIONS, HANDHOLES, AND TRAFFIC CONTROLLER WILL BE DETERMINED IN THE FIELD BY THE ENGINEER.
3. POST MOUNTED SIGNALS SHALL BE INSTALLED SO THAT NO PART OF THE SIGNAL HEAD IS WITHIN 2 FT. OF THE FACE OF THE CURB.
4. ALL MAST ARM POLES SHALL BE A MINIMUM OF 6 FT. FROM THE CENTER OF THE POLE TO THE FACE OF CURB (ON THE MAST ARM SIDE) OR AS SHOWN ON THE PLANS.
5. ALIGN ADJACENT RED INDICATIONS TO SAME HEIGHT ABOVE PAVEMENT.
6. THE BASE FOR A TRAFFIC SIGNAL POST SHALL BE SITUATED SUCH THAT THE HANDHOLE IS LOCATED ON A SIDE AWAY FROM A TRAVELED LANE.
8. THE ANTI-BACKUP FEATURE SHALL BE HARDWIRED ON THE BACKPANEL OF THE CONTROLLER CABINET.

FILE NAME =	USER NAME = biggard	DESIGNED - RDB	REVISED -	<b>STATE OF ILLINOIS DEPARTMENT OF TRANSPORTATION</b>	SCALE:	SHEET NO. OF SHEETS STA. TO STA.	F.A.P. RTE.	SECTION	COUNTY	TOTAL SHEETS	SHEET NO.
cr:\pw\work\pwi\dot\biggard\d0256410\0570899-Design.dgn	DRAWN - RDB	REVISED -	326				10-4TS	CHAMPAIGN	8	6	
PLOT SCALE = 48.0000' / IN.	CHECKED -	REVISED -	CONTRACT NO. 70889								
PLOT DATE = 2/17/2011	DATE -	REVISED -	ILLINOIS FED. AID PROJECT								

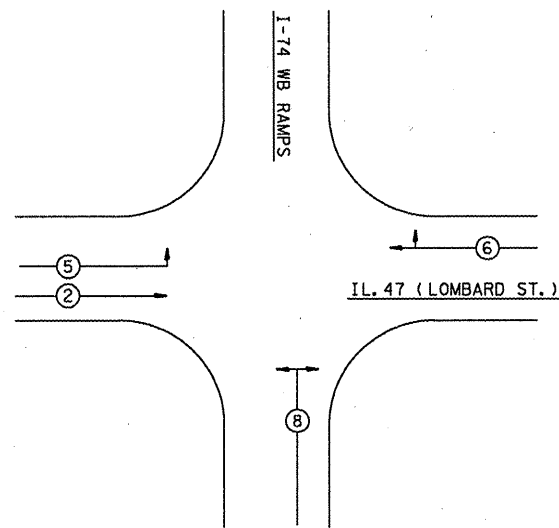


**DETAIL OF MAST ARM FOUNDATION  
BOLT PATTERN**

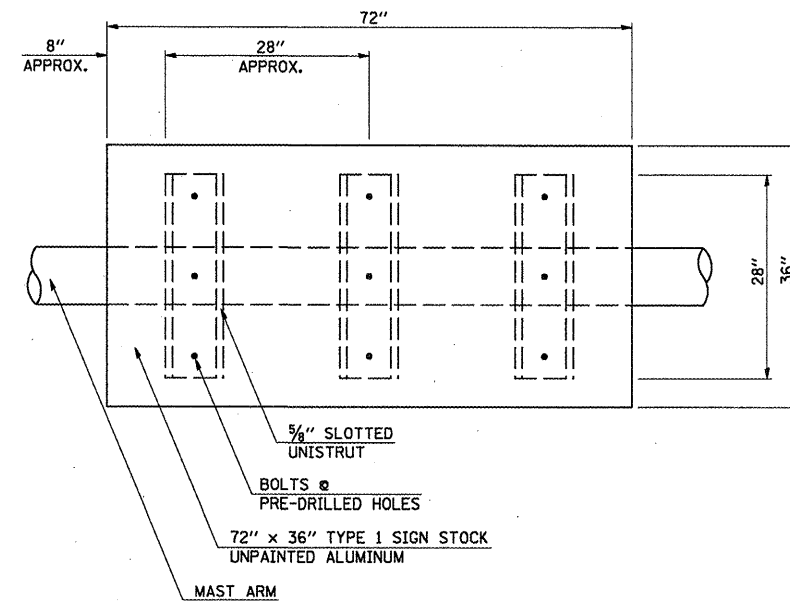
**DETAIL OF DETECTOR LOOP WIRING  
WIRED IN SERIES WITH MULTI-PAIR CABLE**



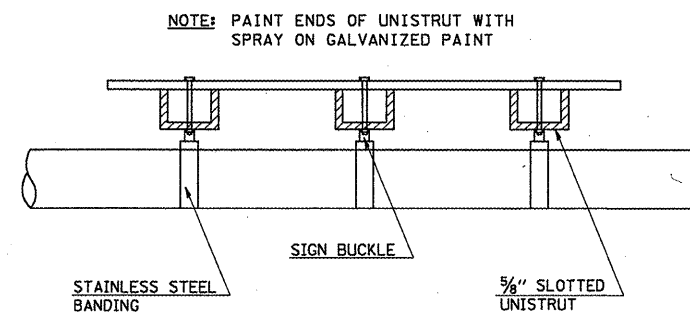
**PHASE DESIGNATION DIAGRAM**



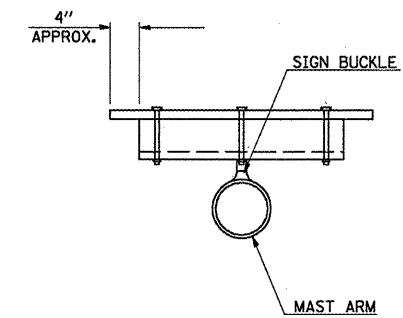
**MAST ARM DAMPENING DEVICE MOUNTING DETAIL**



**PLAN VIEW**



**ELEVATION**



**CROSS SECTION**

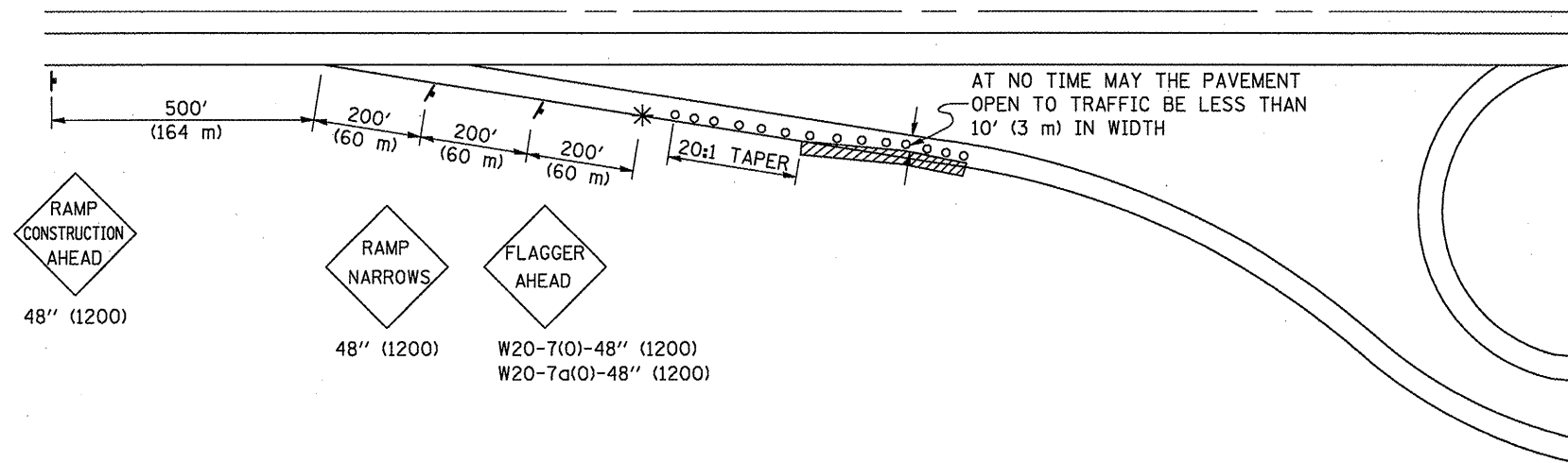
FILE NAME =	USER NAME = biggs-d	DESIGNED - BDB	REVISED -
c:\pwwork\pwwork\biggs-d\02256410\0570889-Design.dgn		DRAWN - BDB	REVISED -
PLOT SCALE = 48.0000' / IN.		CHECKED -	REVISED -
PLOT DATE = 2/9/2011		DATE -	REVISED -

**STATE OF ILLINOIS  
DEPARTMENT OF TRANSPORTATION**

SCALE: _____	SHEET NO. _____ OF _____ SHEETS	STA. _____ TO STA. _____
--------------	---------------------------------	--------------------------

F.A.P. RTE. 326	SECTION 1Q-41S	COUNTY CHAMPAIGN	TOTAL SHEETS 8	SHEET NO. 7
CONTRACT NO. 70889				ILLINOIS FED. AID PROJECT

**APPLICATION NO. 1  
DAY OPERATION ONLY  
PARTIAL RAMP CLOSURE**



**GENERAL NOTES**

CONSTRUCTION OPERATIONS SHALL BE CONFINED TO AN AREA NARROW ENOUGH THAT A MINIMUM OF 10' (3. m) OF PAVEMENT SHALL BE OPEN TO TRAFFIC AT ALL TIMES.

FULL WIDTH PAVEMENT ON THE RAMPS SHALL BE OPEN TO TRAFFIC AT NIGHT.

WHEN NO WORK IS BEING PERFORMED, THE FLAGGER WILL NOT BE REQUIRED. IF THE FLAGGER IS NOT PRESENT, THE FLAGGER SIGNS SHALL BE REMOVED OR COVERED.

ALL SIGNS SHALL BE POST MOUNTED IF WORK IN THE AREA EXCEEDS FOUR DAYS OF DAYTIME OPERATIONS.

LONGITUDINAL DIMENSIONS MAY BE ADJUSTED SLIGHTLY TO FIT FIELD CONDITIONS.

ALL VEHICLES, EQUIPMENT, WORKERS (EXCEPT FLAGGER) AND THEIR ACTIVITIES ARE RESTRICTED AT ALL TIMES TO ONE SIDE OF THE PAVEMENT UNLESS OTHERWISE AUTHORIZED BY THE DISTRICT ENGINEER.

**SYMBOLS**

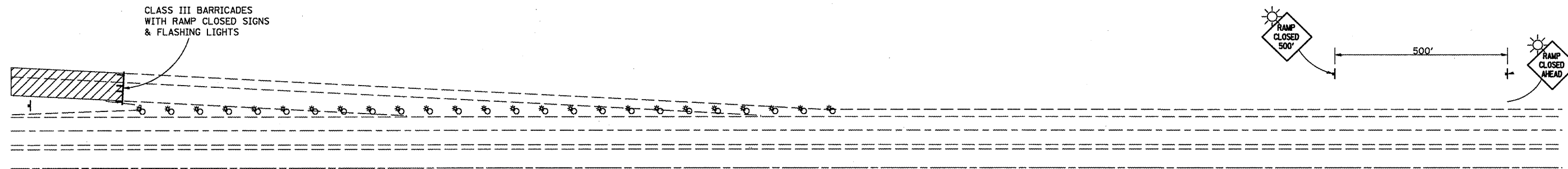
- (APPLICATION NO. 1) TYPE I OR II BARRICADES OR DRUMS @ 50' (15 m) CTS.
- ⊙ (APPLICATION NO. 2) TYPE I OR II BARRICADES OR DRUMS @ 25' (7.5 m) CTS. W/STEADY BURNING LIGHTS
- \* (APPLICATION NO. 1) FLAGGER PLACED AS DIRECTED BY THE ENGINEER
- † SIGN ON PORTABLE OR PERMANENT SUPPORT
- ▨ WORK AREA

**TYPICAL APPLICATIONS**

- PAVEMENT PATCHING
- PIPE UNDERDRAINS
- HMA RESURFACING

Traffic Control for all ramps shall be in accordance with the appropriate application of plan detail **TRAFFIC CONTROL FOR RAMPS** and will not be paid for separately, but shall be included in the contract lump sum prices for **Traffic Control and Protection, Standard 701401** and **Traffic Control and Protection, Standard 701406**.

**APPLICATION NO. 2  
RAMP CLOSURE**



**GENERAL NOTES**

STEADY BURN LIGHTS ARE NOT REQUIRED FOR DAYTIME OPERATIONS.

CONTACT THE DISTRICT TRAFFIC OPERATIONS ENGINEER AT 217-465-4181, ONE WEEK PRIOR TO CLOSING THE RAMP.

Note: All dimensions are in INCHES (millimeters) unless otherwise shown.

FILE NAME =	USER NAME = bigger-d	DESIGNED -	REVISED - 11/06
c:\pw\work\pwidot\bigger-d\0256410\0570089-Design.dgn		DRAWN -	REVISED -
	PLOT SCALE = 48.0000' / IN.	CHECKED -	REVISED -
	PLOT DATE = 2/4/2011	DATE -	REVISED -

**STATE OF ILLINOIS  
DEPARTMENT OF TRANSPORTATION**

**TRAFFIC CONTROL FOR RAMPS**

SCALE: SHEET NO. OF SHEETS STA. TO STA.

DISTRICT 5 DETAIL NO. 70103710				
F.A.P. RTE.	SECTION	COUNTY	TOTAL SHEETS	SHEET NO.
326	10-4TS	CHAMPAIGN	8	8
CONTRACT NO. 70889				
FED. ROAD DIST. NO. ILLINOIS FED. AID PROJECT				