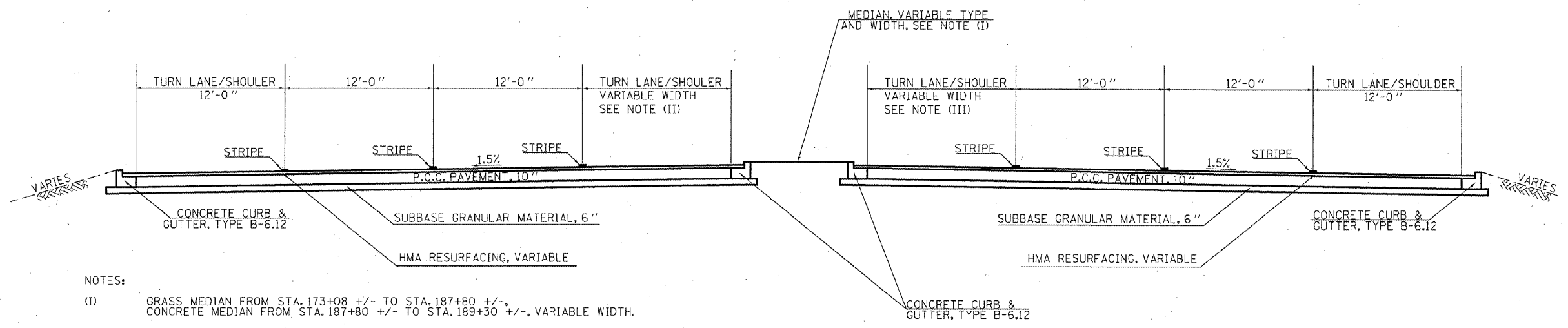


EXISTING TYPICAL CROSS SECTION FAP 693 (IL 9) (6B)

(5B) STA. 172+67.00 TO STA. 193+07.00

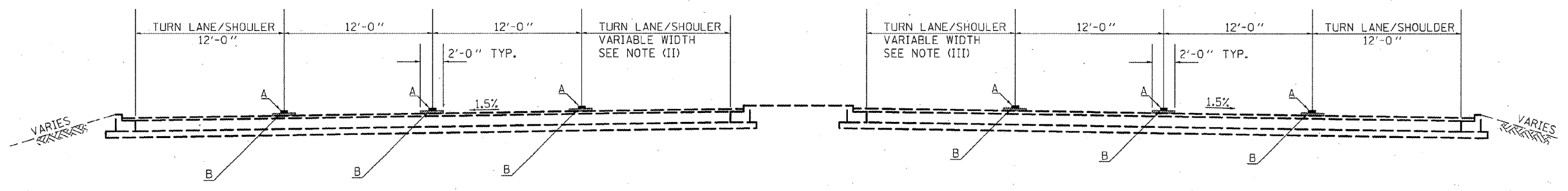


NOTES:

- (I) GRASS MEDIAN FROM STA. 173+08 +/- TO STA. 187+80 +/-, CONCRETE MEDIAN FROM STA. 187+80 +/- TO STA. 189+30 +/-, VARIABLE WIDTH.
- (II) TURN LANE WIDTH VARIES (SEE BELOW):
 12'-0" FROM STA. 173+55 TO STA. 175+20
 VARIES FROM 12'-0" @ STA. 175+20 TO 0'-0" @ STA. 177+30
 12'-0" FROM STA. 183+54 TO STA. 186+57
 VARIES FROM 12'-0" @ STA. 186+57 TO 0'-0" @ STA. 189+21
 12'-0" FROM STA. 190+24 TO STA. 193+07
- (III) TURN LANE WIDTH VARIES (SEE BELOW):
 VARIES FROM 0'-0" @ STA. 179+53 TO 12'-0" @ STA. 181+53
 12'-0" FROM STA. 181+53 TO STA. 185+13
 VARIES FROM 0'-0" @ STA. 186+63 TO 12'-0" @ STA. 189+21
 12'-0" FROM STA. 189+21 TO STA. 190+24

PROPOSED TYPICAL CROSS SECTION FAP 693 (IL 9) (6B)

(5B) STA. 172+67.00 TO STA. 193+07.00



A = STRIPE/RAISED REFLECTIVE PAVEMENT MARKER AS REQUIRED.
 B = MICRO-SURFACING, SINGLE PASS, TYPE 2 (20 LBS/SQ. YD.)

REVISIED SHEET 4/13/11

FILE NAME =	USER NAME = ceerlookbm	DESIGNED - BMC	REVISED -
o:\pwork\pudot\ceerlookbm\d8243284\570892-sh-typical.dgn		DRAWN - BMC	REVISED -
PLOT SCALE = 48.0000' / 1"		CHECKED -	REVISED -
PLOT DATE = 4/7/2011		DATE - 12-22-2010	REVISED -

**STATE OF ILLINOIS
DEPARTMENT OF TRANSPORTATION**

TYPICAL CROSS SECTIONS
 SCALE: N/A SHEET NO. 5A OF 5 SHEETS STA. 166+09.85 TO STA. 172+67.00

F.A.P. RTE.	SECTION	COUNTY	TOTAL SHEETS	SHEET NO.
• 693 & 704 •• (129)1-2, (1,2)1, & (FAP 101)	••	MCLEAN	55	12A
CONTRACT NO. 70892			ILLINOIS FED. AID PROJECT	