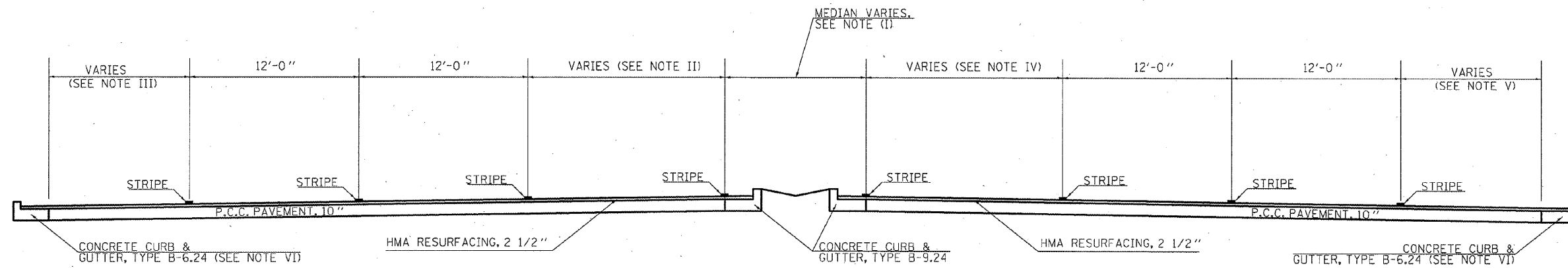


EXISTING TYPICAL CROSS SECTION FAP 693 (IL 9) (7B)

(5B) STA. 129+29.00 TO STA. 203+84.05



NOTES:

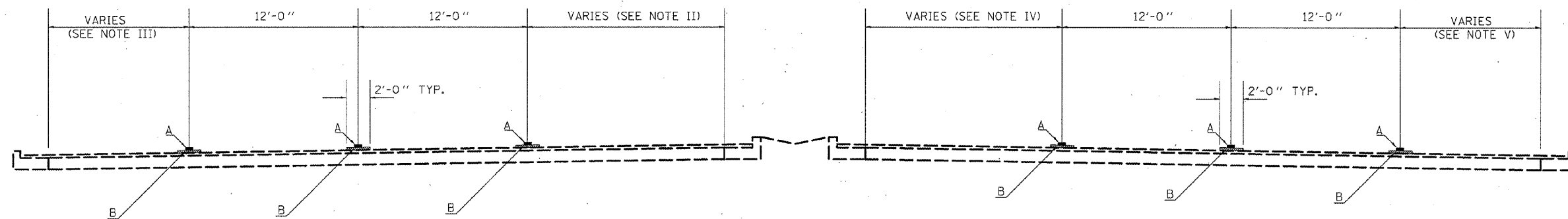
- (I) MEDIAN TYPE VARIES BETWEEN CONCRETE AND GRASS FROM STA. 129+29 TO STA. 177+53 +/-, MEDIAN WIDTH VARIES FROM 0' TO 22' FROM STA. 129+29 TO STA. 203+84.05.
- (II) 0' TO 14' & VAR. TURN LANE. SEE BELOW FOR LOCATIONS: STA. 130+50 +/- TO STA. 135+58 +/-, STA. 157+31 +/- TO STA. 162+16 +/-, STA. 183+60 +/- TO STA. 188+67 +/-.
- (III) VARIES: 10' BITUMINOUS SHOULDER FROM STA. 129+29 TO STA. 144+67, 12' TO 0' RT. TURN LANE W/ VARIABLE WIDTH BITUMINOUS SHOULDER FROM STA. 144+67 TO STA. 149+30, 10' BITUMINOUS SHOULDER FROM STA. 149+30 TO STA. 177+53, 12' TO 0' RT. TURN LANE W/ VARIABLE WIDTH BITUMINOUS SHOULDER FROM STA. 183+60 +/- TO STA. 188+60 +/-, 10' BITUMINOUS SHOULDER FROM STA. 188+60 TO STA. 203+84.05

NOTES:

- (IV) 0' TO 14' & VAR. TURN LANE. SEE BELOW FOR LOCATIONS: STA. 137+13 TO STA. 144+89, STA. 151+27 TO STA. 157+31, STA. 176+39 TO STA. 183+60, STA. 197+04 TO STA. 203+84.05
- (V) VARIES: 12' RT. TURN LANE W/ VARIABLE WIDTH BITUMINOUS SHOULDER FROM STA. 129+29 TO 130+50, 10' BITUMINOUS SHOULDER FROM STA. 130+50 TO STA. 150+23, 0' TO 12' RT. TURN LANE W/ VARIABLE WIDTH BITUMINOUS SHOULDER FROM STA. 150+23 TO STA. 156+38, 10' BITUMINOUS SHOULDER FROM STA. 158+20 TO 202+84
- (VI) CURB & GUTTER LOCATIONS ARE VARIABLE FROM STA. 129+29 TO STA. 203+84.05.

PROPOSED TYPICAL CROSS SECTION FAP 693 (IL 9) (7B)

(6B) STA. 129+29.00 TO STA. 203+84.05



- A = STRIPE/RAISED REFLECTIVE PAVEMENT MARKER AS REQUIRED.
- B = MICRO-SURFACING, SINGLE PASS, TYPE 2 (20 LBS/SQ. YD.)

REVISIED SHEET 4/13/11

FILE NAME =	USER NAME = ceerlockbm	DESIGNED - BMC	REVISED -	STATE OF ILLINOIS DEPARTMENT OF TRANSPORTATION	TYPICAL CROSS SECTIONS			F.A.P. RTE.	SECTION	COUNTY	TOTAL SHEETS	SHEET NO.	
at:\pwwork\pwwork\ceerlockbm\0243284\572892-shr-typical.dgn	PLOT SCALE = 48,0000' / 1" =	DRAWN - BMC	REVISED -		SCALE: N/A	SHEET NO. 5B OF 5 SHEETS	STA. 166+09.85 TO STA. 172+67.00	*	**	MCLEAN	55	12B	
	PLOT DATE = 4/7/2011	CHECKED -	REVISED -										
		DATE - 12-22-2010	REVISED -										

* 693 & 704
** (129)-2, (1.21), & (FAP 101)

ILLINOIS FED. AID PROJECT