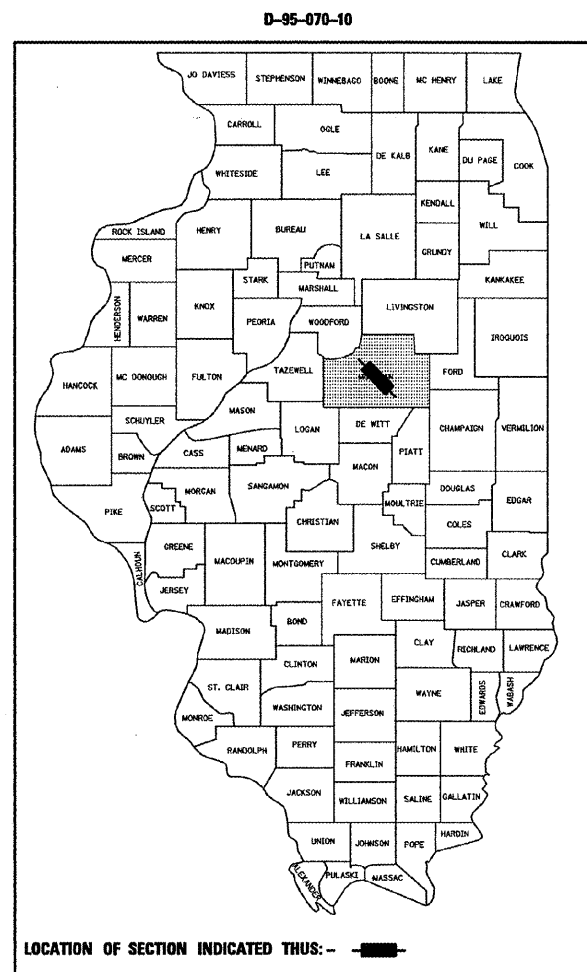


F.A.P. RTE.	SECTION	COUNTY	TOTAL SHEETS	SHEET NO.
693/704	*	MCLEAN	55	01
FED. ROAD DIST. NO.		ILLINOIS	CONTRACT NO. 70892	
* (129)I-2 & (1,2)I (FAP 10)I				

FOR PROJECT LOCATION MAPS SEE SHEET NO. 02  
INDEX OF SHEETS, SEE SHEET NO. 03  
FOR SUMMARY OF QUANTITIES, SEE SHEET NO. 04

**DEPARTMENT OF TRANSPORTATION**  
**DIVISION OF HIGHWAYS**  
**PROPOSED**  
**HIGHWAY PLANS**  
**FAP 693 (IL 9)**  
**FAP 704 (I-55 BUS)**  
**SECTION (129)I-2 & (1,2)I & (FAP 10)I**  
**MCLEAN COUNTY**



**CURRENT ADT TRAFFIC DATA (2010)**  
**FAP 704 (I-55 BUS) ADT = 43,500**  
**FAP 693 (IL 9) ADT = 8,400**

**DESIGN DESIGNATION**  
**OTHER PRINCIPAL ARTERIAL**

**MICRO-SURFACING**  
**(CENTERLINE & EDGELINES)**  
**C-95-070-10**

**FAP 693 (IL 9) - CARRI DR. TO WALTON DR.**  
**GROSS & NET LENGTH = 2735 FEET = 0.518 MILES**

**FAP 693 (IL 9) - SERVICE DR. TO HERSHEY RD.**  
**GROSS & NET LENGTH = 3919 FEET = 0.742 MILES**

**RAMPS AT INTERSECTION OF FAP 693 (IL 9) & FAP 704 (I-55 BUS)**  
**GROSS & NET LENGTH = 1420 FEET = 0.269 MILES**

**FAP 693 (IL 9) - CARNAHAN DR. TO HARVEST POINTE BLVD.**  
**GROSS & NET LENGTH = 8746 FEET = 1.656 MILES**

**FAP 704 (I-55 BUS)**  
**GROSS & NET LENGTH = 4860 FEET = 0.920 MILES**

**PROJECT TOTALS**  
**GROSS & NET LENGTH = 21680 FEET = 4.106 MILES**

**J.U.L.I.E.**  
**JOINT UTILITY LOCATION INFORMATION FOR EXCAVATION**  
**1-800-892-0123 OR 811**  
**T23N & T24N**

**PROJECT ENGINEER: KEVIN TRAPP**  
**SQUAD LEADER: MATT BOWER**  
**DESIGNER: BRENT CEARLOCK**  
**PHONE: (217)465-4181**  
**CONTRACT NO. 70892**

**STATE OF ILLINOIS**  
**DEPARTMENT OF TRANSPORTATION**  
**DIVISION OF HIGHWAYS**

SUBMITTED 4/18 20 11

*Joseph E. Cowen*  
DEPUTY DIRECTOR OF HIGHWAYS, REGION THREE ENGINEER

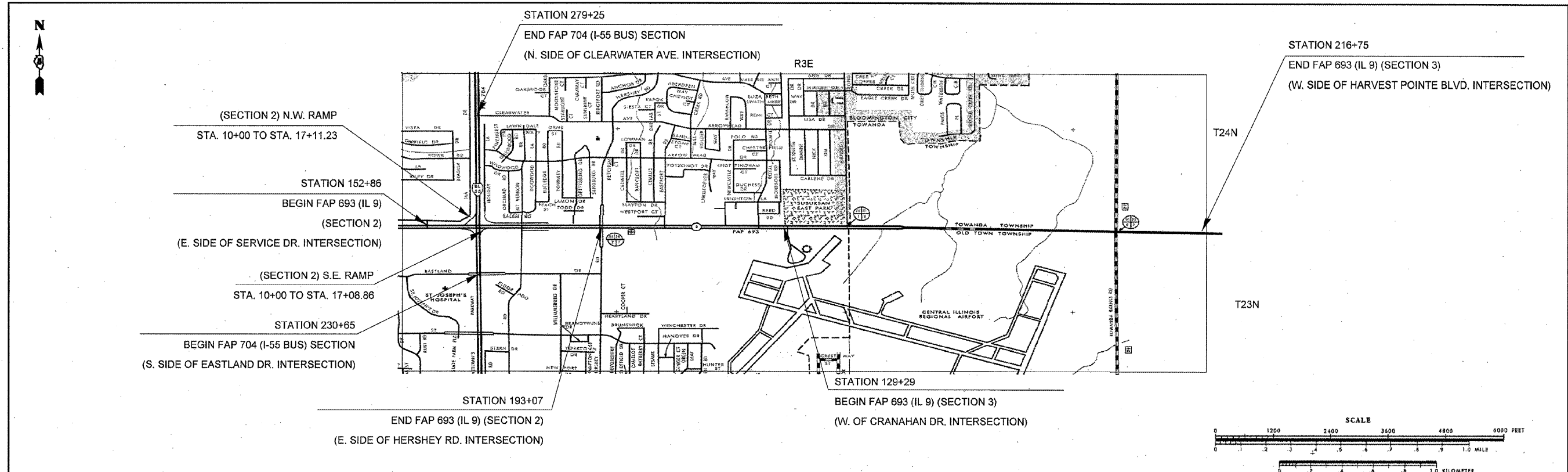
March 05 20 11  
*Scott E. Stitt P.E. /sr*  
AGING ENGINEER OF DESIGN AND ENVIRONMENT

March 25 20 11  
*Christine M. Reed /sr*  
DIRECTOR OF HIGHWAYS, CHIEF ENGINEER

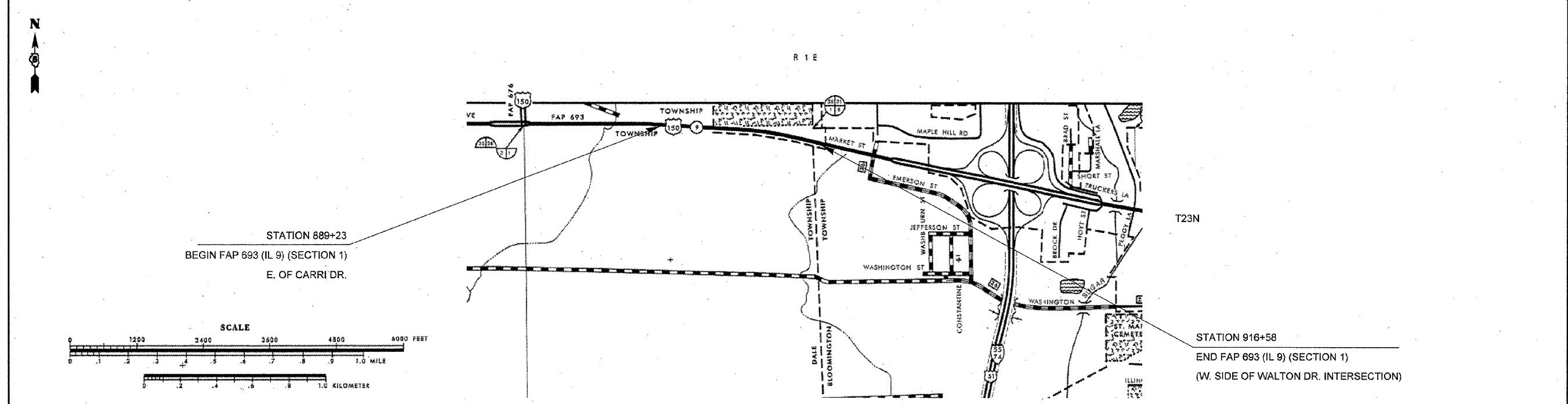
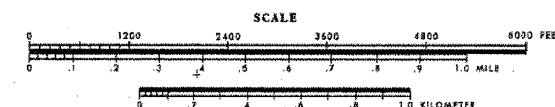
**PRINTED BY THE AUTHORITY**  
**OF THE STATE OF ILLINOIS**

▲ REVISED SHEET 4/13/11

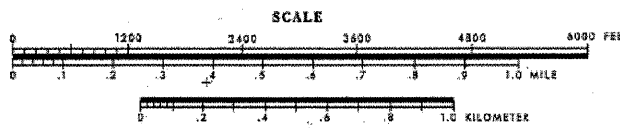
PLOT DATE = 12/29/2010  
FILE NAME = c:\pwworkspace\cearlock\ad024328\10570892-rht-cover.dgn  
PLOT SCALE = 1/8" = 100'-0"  
USER NAME = cearlock



FAP 704 (I-55 BUS) & FAP 693 (IL 9)



FAP 693 (IL 9)



REVISI<sup>o</sup>N SHEET 4/13/11

FILE NAME =	USER NAME = ceerlockbm	DESIGNED - BMC	REVISED 4-5-2011
c:\pwwork\pvidot\ceerlockbm\0243284\	070892-shr-gemnote.dgn	DRAWN - BMC	REVISED -
	PLOT SCALE = 40.0000' / 1 in.	CHECKED -	REVISED -
	PLOT DATE = 4/7/2011	DATE - 12-22-10	REVISED -

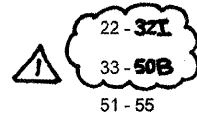
STATE OF ILLINOIS  
DEPARTMENT OF TRANSPORTATION

PROJECT LOCATION  
SCALE: N/A SHEET NO. 1 OF 1 SHEETS STA. - TO STA. -

• 693 & 704				
•• (1291)-2 & (1,2) & (FAP 101)				
F.A.P. RTE.	SECTION	COUNTY	TOTAL SHEETS	SHEET NO.
•	••	MCLEAN	55	02
CONTRACT NO. 70892				
ILLINOIS FED. AID PROJECT				

# INDEX OF SHEETS

SHEET NO.	DESCRIPTION
1	COVER SHEET
2	PROJECT LOCATION MAPS
3	HIGHWAY STANDARDS/INDEX OF SHEETS
4	GENERAL NOTES
5	SUMMARY OF QUANTITIES
6 - 12	TYPICAL SECTIONS - FAP 693 (IL 9)
13 - 21	TYPICAL SECTIONS - FAP 704 (VETERANS PKWY)
22 - <del>32</del>	SCHEDULE OF QUANTITIES
33 - <del>50B</del>	MICRO-SURFACING & PAVEMENT MARKING DETAILS
51 - 55	PAVEMENT MARKING DETAILS



# HIGHWAY STANDARDS

STANDARD NO.	DESCRIPTION
000001-06	STANDARD SYMBOLS, ABBREVIATIONS, AND PATTERNS
001006	DECIMAL OF AN INCH AND A FOOT
701411-07	LANE CLOSURE, MULTILANE, AT ENTRANCE OR EXIT RAMP, FOR SPEEDS $\geq$ 45 MPH
701426-04	LANE CLOSURE, MULTILANE, INTERMITTENT OR MOVING OPER., FOR SPEEDS $\geq$ 45 MPH
701601-07	URBAN LANE CLOSURE, MULTILANE, 1W OR 2W WITH NONTRAVERSABLE MEDIAN
701602-05	URBAN LANE CLOSURE, MULTILANE, 2W WITH BIDIRECTION LEFT TURN LANE
701701-07	URBAN LANE CLOSURE, MULTILANE INTERSECTION
701901-01	TRAFFIC CONTROL DEVICES
780001-02	TYPICAL PAVEMENT MARKINGS
781001-03	TYPICAL APPLICATIONS RAISED REFLECTIVE PAVEMENT MARKERS

⚠ REVISIED 4/13/11

FILE NAME : c:\p\work\avidot\cearlockbm\d0243284\	USER NAME : cearlockbm 5708942.rst-gennats.dgn	DESIGNED - BMC	DRAWN - BMC	CHECKED -	DATE - 12-22-10	REVISED -	REVISED -	REVISED -	REVISED -	<b>STATE OF ILLINOIS DEPARTMENT OF TRANSPORTATION</b>	<b>INDEX OF SHEETS/HIGHWAY STANDARDS</b>	SCALE: N/A	SHEET NO. 1 OF 1 SHEETS	STA. -	TO STA. -	F.A.P. RTE.	SECTION	COUNTY	TOTAL SHEETS	SHEET NO.		
																	* 693 & 704 ** (129)-2 & (12) & (FAP 10)	MCCLEAN	55	03	CONTRACT NO. 70892	ILLINOIS FED. AID PROJECT

# GENERAL NOTES

G.N.-100: ENGLISH UNITS OF MEASUREMENT SHALL GOVERN OVER AND SUPERSEDE ANY METRIC UNITS SHOWN IN THIS CONTRACT. WHERE INCLUDED, METRIC UNITS ARE FOR INFORMATION ONLY.

G.N.-100A: ELECTRONIC FILES AND/OR ELECTRONIC SURVEY INFORMATION INCLUDING CADD FILES WILL NOT BE AVAILABLE TO THE CONTRACTOR.

G.N.-451 (SPECIAL): AN APPLICATION RATE OF 0.41 POUNDS/FOOT WAS USED TO DETERMINE THE FIBER ASPHALT QUANTITY.

G.N.-703A: SHORT TERM PAVEMENT MARKING SHALL BE APPLIED TO THE PAVEMENT AFTER ANY OF THE FOLLOWING: COLD MILLING AND/OR PLACING BITUMINOUS MATERIALS (PRIME COAT), LEVELING BINDER (MACHINE METHOD), BINDER AND SURFACE COURSES. SHORT TERM PAVEMENT MARKING PLACED ON THE SURFACE, SHALL COINCIDE WITH THE FINAL PAVEMENT STRIPING. SHORT TERM PAVEMENT MARKINGS PLACED PRIOR TO THE SURFACE SHALL COINCIDE WITH THE EXISTING PAVEMENT MARKINGS. USE 4 FEET PER 40 FEET (OR 10% PER STATION).

G.N.-703 (SPECIAL): PAINT WILL NOT BE ALLOWED TO BE USED FOR SHORT TERM PAVEMENT MARKINGS AND TEMPORARY PAVEMENT MARKINGS. PAVEMENT MARKING TAPE SHALL BE USED AT ALL LOCATIONS WHERE WORK ZONE PAVEMENT MARKINGS ARE CALLED OUT IN THE PLANS. NO ADDITIONAL COMPENSATION WILL BE ALLOWED.

G.N.-781: RAISED REFLECTIVE PAVEMENT MARKERS SHALL BE PLACED IN ACCORDANCE WITH STANDARD 781001, AND THE DETAILS SHOWN IN THE PLANS. IF THERE IS ANY DISCREPANCY BETWEEN THE STANDARD AND THE DETAILS IN THE PLANS, THE DETAILS IN THE PLANS SHALL GOVERN. THE FINAL PAVEMENT MARKINGS SHALL BE IN PLACE PRIOR TO PLACING THE RAISED REFLECTIVE PAVEMENT MARKERS AND THE RAISED REFLECTIVE PAVEMENT MARKERS SHALL BE PLACED MIDWAY IN THE 30 FOOT (9m) SPACE BETWEEN THE DASHED CENTERLINE STRIPES (WHEN APPLICABLE).

NO COMMITMENTS

▲ REVISED SHEET 4/13/11

• 693 & 704  
 \*\* (129)-2 & (1,2) & (FAP 10)

FILE NAME =	USER NAME = ceerlockbm	DESIGNED - BMC	REVISED 4-5-2011	<b>STATE OF ILLINOIS DEPARTMENT OF TRANSPORTATION</b>	<b>GENERAL NOTES</b>	F.A.P. RTE.	SECTION	COUNTY	TOTAL SHEETS	SHEET NO.
c:\pwwork\pwwork\ceerlockbm\0243284\0578912-sht-gennote.dgn		DRAWN - BMC	REVISED -			•	**	MCLEAN	55	04
PLOT SCALE = 40.0000' / in.		CHECKED -	REVISED -			CONTRACT NO. 70892				
PLOT DATE = 4/7/2011		DATE - 12-22-10	REVISED -	SCALE: N/A	SHEET NO. 1 OF 1 SHEETS	STA. -	TO STA. -	ILLINOIS FED. AID PROJECT		

## SUMMARY OF QUANTITIES

### I-55 BUS.

LOCATION:	FAP 693 (IL 9) SECTION 1 MCLEAN CO. STA. 889+23 TO STA. 916+58 URBAN 100% STATE	FAP 704 (VETERANS PKWY) MCLEAN CO. STA. 230+65 TO STA. 279+25 URBAN 100% STATE	FAP 693 (IL 9 - SERVICE DR. TO HERSHEY RD.) SECTION 2 MCLEAN CO. *STA. 152+86 TO *STA. 193+07 URBAN 100% STATE	FAP 693 (IL 9 - CARNAHAN DR. TO TOWANDA BARNES RD.) SECTION 3 MCLEAN CO. STA. 129+29 TO STA. 216+75 URBAN 100% STATE
-----------	--	--	---	---

\* NOTE: N.W. RAMP : STA. 10+00 TO 17+11.23 & S.E. RAMP: STA. 10+00 TO 17+08.86 ARE INCLUDED

CONSTRUCTION CODE:    0005                      0005                      0005                      0005

PAY ITEM CODE	PAY ITEM DESCRIPTION	UNIT	TOTAL	QTY.	QTY.	QTY.	QTY.
40600100	BITUMINOUS MATERIALS (PRIME COAT)	GALLON	2460.0	278.0	737.0	472.0	973.0
67100100	MOBILIZATION	LSUM	1.0	0.2	0.2	0.4	0.2
70300100	SHORT TERM PAVEMENT MARKING	FOOT	8275.0	1252.0	2727.0	1468.0	2828.0
70301000	WORK ZONE PAVEMENT MARKING REMOVAL	SQ FT	2756.0	417.0	908.0	489.0	942.0
* 78005110	EPOXY PAVEMENT MARKING - LINE 4"	FOOT	59853.0	8128.0	12751.0	7593.0	31381.0
* 78100100	RAISED REFLECTIVE PAVEMENT MARKER	EACH	1597.0	194.0	639.0	358.0	406.0
78300100	PAVEMENT MARKING REMOVAL	SQ FT	19931.0	2707.0	4246.0	2528.0	10450.0
78300200	RAISED REFLECTIVE PAVEMENT MARKER REMOVAL	EACH	1585.0	181.0	639.0	359.0	406.0
X0326240	MICRO-SURFACING TEST STRIP	EACH	1.0	0.2	0.2	0.4	0.2
X7010216	TRAFFIC CONTROL AND PROTECTION, (SPECIAL)	LSUM	1.0	0.2	0.2	0.4	0.2
X7015005	CHANGEABLE MESSAGE SIGN	CAL DA	30.0		20.0	10.0	
Z0004005	FIBER ASPHALT	POUND	1968.0	1818.0	150.0		
Z0026346	NIGHTTIME WORK ZONE LIGHTING	LSUM	1.0		0.5	0.5	
Z0063804	MICRO-SURFACING, SINGLE PASS, TYPE II, MIXTURE D	SQ YD	24597.0	2782.0	7384.0	4720.0	9731.0

\*SPECIALTY ITEM

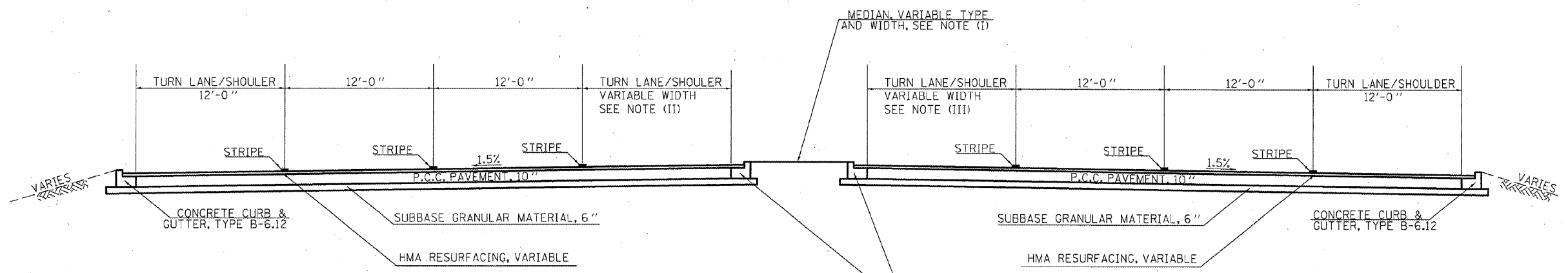
▲ REVISED SHEET 4/13/11

FILE NAME =	USER NAME = ceerlockbm	DESIGNED BMC	REVISED 4-5-2011	<b>STATE OF ILLINOIS DEPARTMENT OF TRANSPORTATION</b>	<b>SUMMARY OF QUANTITIES</b>				F.A.P. RTE.	SECTION	COUNTY	TOTAL SHEETS	SHEET NO.
ce:\pvc\work\pvidot\ceerlockbm\024328410378992-ahh-500.dgn	PLOT SCALE = 48.0000' / 1" =	DRAWN BMC	REVISED -		SCALE: -	SHEET NO. 1 OF 1 SHEETS	STA. -	TO STA. -	*	**	MCLEAN	55	05
	PLOT DATE = 4/7/2011	CHECKED -	REVISED -		CONTRACT NO. 70892								
		DATE 12-22-10	REVISED -		FED. ROAD DIST. NO.    ILLINOIS FED. AID PROJECT								

\* 693 & 704  
\*\* (1291)-2 & (1,2) & (FAP 10)

**EXISTING TYPICAL CROSS SECTION FAP 693 (IL 9) (6B)**

(5B) STA. 172+67.00 TO STA. 193+07.00

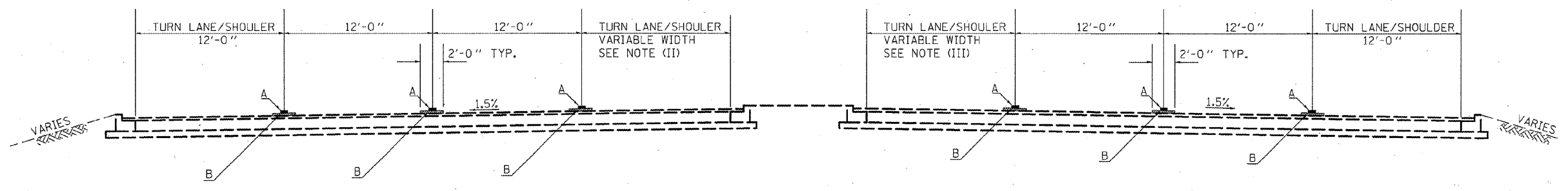


NOTES:

- (I) GRASS MEDIAN FROM STA. 173+08 +/- TO STA. 187+80 +/-, CONCRETE MEDIAN FROM STA. 187+80 +/- TO STA. 189+30 +/-, VARIABLE WIDTH.
- (II) TURN LANE WIDTH VARIES (SEE BELOW):  
 12'-0" FROM STA. 173+55 TO STA. 175+20  
 VARIES FROM 12'-0" @ STA. 175+20 TO 0'-0" @ STA. 177+30  
 12'-0" FROM STA. 183+54 TO STA. 186+57  
 VARIES FROM 12'-0" @ STA. 186+57 TO 0'-0" @ STA. 189+21  
 12'-0" FROM STA. 190+24 TO STA. 193+07
- (III) TURN LANE WIDTH VARIES (SEE BELOW):  
 VARIES FROM 0'-0" @ STA. 179+53 TO 12'-0" @ STA. 181+53  
 12'-0" FROM STA. 181+53 TO STA. 185+13  
 VARIES FROM 0'-0" @ STA. 186+63 TO 12'-0" @ STA. 189+21  
 12'-0" FROM STA. 189+21 TO STA. 190+24

**PROPOSED TYPICAL CROSS SECTION FAP 693 (IL 9) (6B)**

(5B) STA. 172+67.00 TO STA. 193+07.00



A = STRIPE/RAISED REFLECTIVE PAVEMENT MARKER AS REQUIRED.  
 B = MICRO-SURFACING, SINGLE PASS, TYPE 2 (20 LBS/SQ. YD.)

**REVISIED SHEET 4/13/11**

FILE NAME =	USER NAME = ceerlookbm	DESIGNED - BMC	REVISED -
o:\pwork\pudot\ceerlookbm\d8243284\570892-sh-typical.dgn		DRAWN - BMC	REVISED -
PLOT SCALE = 48.0000' / 1"		CHECKED -	REVISED -
PLOT DATE = 4/7/2011		DATE - 12-22-2010	REVISED -

**STATE OF ILLINOIS  
 DEPARTMENT OF TRANSPORTATION**

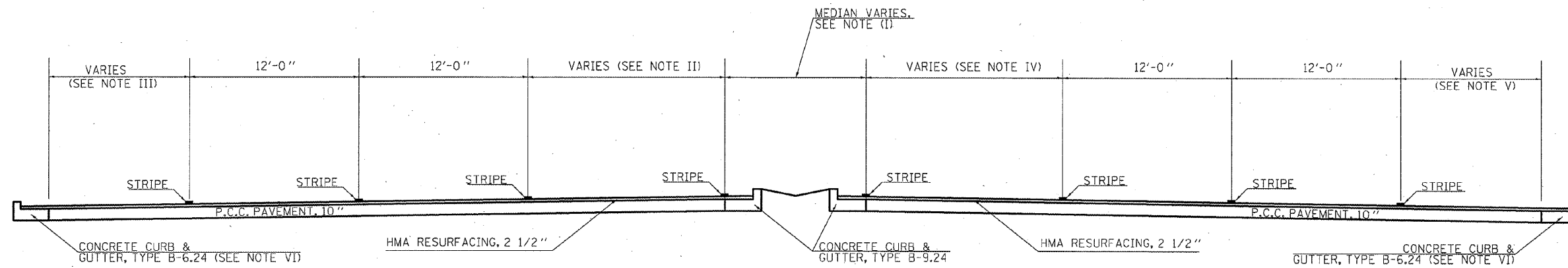
**TYPICAL CROSS SECTIONS**

SCALE: N/A      SHEET NO. 5A OF 5 SHEETS      STA. 166+09.85 TO STA. 172+67.00

F.A.P. RTE.	SECTION	COUNTY	TOTAL SHEETS	SHEET NO.
	**	MCLEAN	55	12A
CONTRACT NO. 70892				
ILLINOIS FED. AID PROJECT				

**EXISTING TYPICAL CROSS SECTION FAP 693 (IL 9) (7B)**

**(5B) STA. 129+29.00 TO STA. 203+84.05**



**NOTES:**

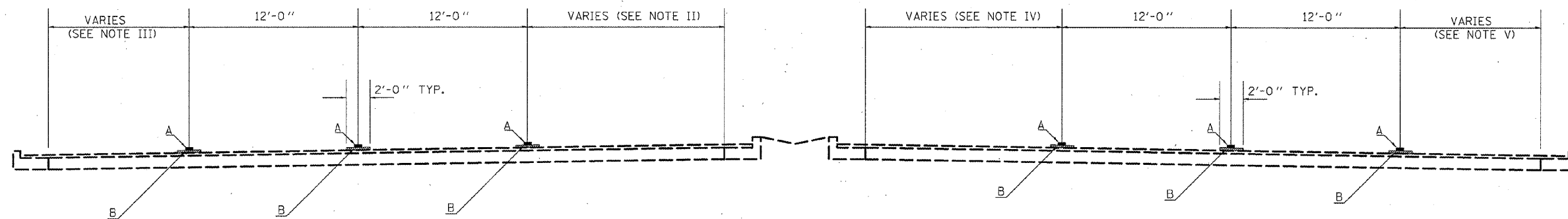
- (I) MEDIAN TYPE VARIES BETWEEN CONCRETE AND GRASS FROM STA. 129+29 TO STA. 177+53 +/-, MEDIAN WIDTH VARIES FROM 0' TO 22' FROM STA. 129+29 TO STA. 203+84.05.
- (II) 0' TO 14' & VAR. TURN LANE. SEE BELOW FOR LOCATIONS: STA. 130+50 +/- TO STA. 135+58 +/-, STA. 157+31 +/- TO STA. 162+16 +/-, STA. 183+60 +/- TO STA. 188+67 +/-.
- (III) VARIES: 10' BITUMINOUS SHOULDER FROM STA. 129+29 TO STA. 144+67, 12' TO 0' RT. TURN LANE W/ VARIABLE WIDTH BITUMINOUS SHOULDER FROM STA. 144+67 TO STA. 149+30, 10' BITUMINOUS SHOULDER FROM STA. 149+30 TO STA. 177+53, 12' TO 0' RT. TURN LANE W/ VARIABLE WIDTH BITUMINOUS SHOULDER FROM STA. 183+60 +/- TO STA. 188+60 +/-, 10' BITUMINOUS SHOULDER FROM STA. 188+60 TO STA. 203+84.05

**NOTES:**

- (IV) 0' TO 14' & VAR. TURN LANE. SEE BELOW FOR LOCATIONS: STA. 137+13 TO STA. 144+89, STA. 151+27 TO STA. 157+31, STA. 176+39 TO STA. 183+60, STA. 197+04 TO STA. 203+84.05
- (V) VARIES: 12' RT. TURN LANE W/ VARIABLE WIDTH BITUMINOUS SHOULDER FROM STA. 129+29 TO 130+50, 10' BITUMINOUS SHOULDER FROM STA. 130+50 TO STA. 150+23, 0' TO 12' RT. TURN LANE W/ VARIABLE WIDTH BITUMINOUS SHOULDER FROM STA. 150+23 TO STA. 156+38, 10' BITUMINOUS SHOULDER FROM STA. 158+20 TO 202+84
- (VI) CURB & GUTTER LOCATIONS ARE VARIABLE FROM STA. 129+29 TO STA. 203+84.05.

**PROPOSED TYPICAL CROSS SECTION FAP 693 (IL 9) (7B)**

**(6B) STA. 129+29.00 TO STA. 203+84.05**



- A = STRIPE/RAISED REFLECTIVE PAVEMENT MARKER AS REQUIRED.
- B = MICRO-SURFACING, SINGLE PASS, TYPE 2 (20 LBS/SQ. YD.)

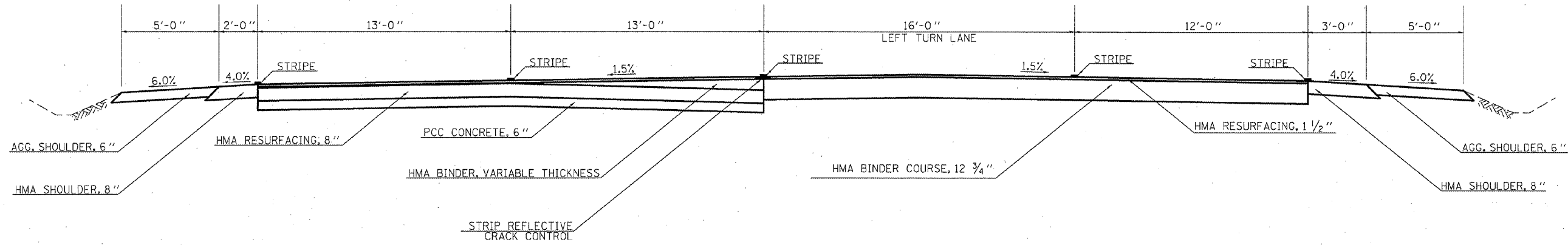
**REVISIED SHEET 4/13/11**

FILE NAME =	USER NAME = ceerlockbm	DESIGNED - BMC	REVISED -	<b>STATE OF ILLINOIS DEPARTMENT OF TRANSPORTATION</b>	<b>TYPICAL CROSS SECTIONS</b>			F.A.P. RTE.	SECTION	COUNTY	TOTAL SHEETS	SHEET NO.
at:\pwwork\pwwork\ceerlockbm\0243284\572892-shr-typical.dgn	PLOT SCALE = 48,0000' / 1" =	DRAWN - BMC	REVISED -		SCALE: N/A	SHEET NO. 5B OF 5 SHEETS	STA. 166+09.85 TO STA. 172+67.00	*	**	MCLEAN	55	12B
PLOT DATE = 4/7/2011	DATE = 12-22-2010	CHECKED -	REVISED -		CONTRACT NO. 70892							
		DATE = 12-22-2010	REVISED -		ILLINOIS FED. AID PROJECT							

\* 693 & 704  
\*\* (129)-2, (1,2), & (FAP 10)

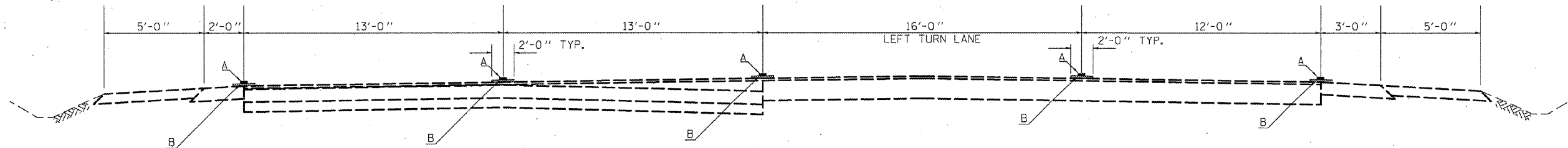
EXISTING TYPICAL CROSS SECTION FAP 693 (IL 9) (8B)

(7B) STA. 203+84.05 TO STA. 216+49.81



PROPOSED TYPICAL CROSS SECTION FAP 693 (IL 9) (8B)

(7B) STA. 203+84.05 TO STA. 216+49.81



A = STRIPE/RAISED REFLECTIVE PAVEMENT MARKER AS REQUIRED.  
 B = MICRO-SURFACING, SINGLE PASS, TYPE 2 (20 LBS/SQ. YD.)

REVISIED SHEET 4/13/11

FILE NAME =	USER NAME = ceerlockbm	DESIGNED - BMC	REVISED -	<b>STATE OF ILLINOIS DEPARTMENT OF TRANSPORTATION</b>	<b>TYPICAL CROSS SECTIONS</b>			F.A.P. RTE.	SECTION	COUNTY	TOTAL SHEETS	SHEET NO.	
cr:\pw\work\pwidot\ceerlockbm\d243284\270892-shr-typical.dgn	PLOT SCALE = 48.0000' / 1"	DRAWN - BMC	REVISED -		SCALE: N/A	SHEET NO. 5C OF 5 SHEETS	STA. 166+09.85 TO STA. 172+67.00	•	••	MCLEAN	55	12C	
	PLOT DATE = 4/7/2011	CHECKED -	REVISED -										
		DATE - 12-22-2010	REVISED -										

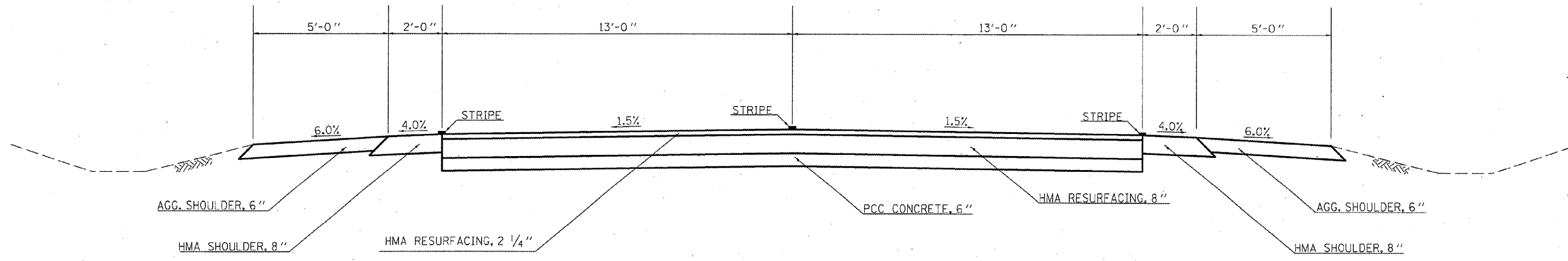
• 693 & 704  
 •• (129)-2, (1,2), & (FAP 101)

ILLINOIS FED. AID PROJECT



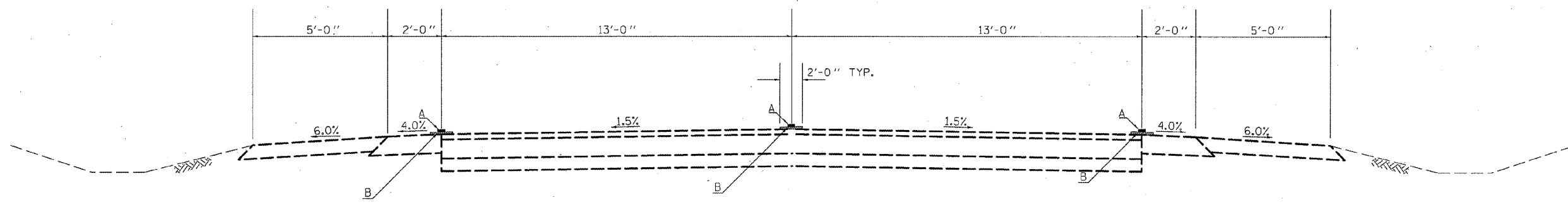
EXISTING TYPICAL CROSS SECTION FAP 693 (IL 9) (9B)

ⓑ STA. 216+49.81 TO STA. 216+75.00



PROPOSED TYPICAL CROSS SECTION FAP 693 (IL 9) (9B)

ⓑ STA. 216+49.81 TO STA. 216+75.00



A = STRIPE/RAISED REFLECTIVE PAVEMENT MARKER AS REQUIRED.  
 B = MICRO-SURFACING, SINGLE PASS, TYPE 2 (20 LBS/SQ. YD.)

⚠ REVISIED SHEET 4/13/11

FILE NAME =	USER NAME = oee-lockm	DESIGNED - BMC	REVISED -
ct:\pw_work\pwsdet\oee\lockm\40243284\578992-shs-typical.dgn		DRAWN - BMC	REVISED -
PLOT SCALE = 40.0000" / in.		CHECKED -	REVISED -
PLOT DATE = 4/7/2011		DATE - 12-22-2010	REVISED -

STATE OF ILLINOIS  
 DEPARTMENT OF TRANSPORTATION

TYPICAL CROSS SECTIONS		
SCALE: N/A	SHEET NO. 50 OF 5 SHEETS	STA. 166+09.85 TO STA. 172+67.00

F.A.P. RTE.	SECTION	COUNTY	TOTAL SHEETS	SHEET NO.
*	**	MCLEAN	55	12D
CONTRACT NO. 70892				
ILLINOIS FED. AID PROJECT				

\* 693 & 704  
 \*\* (129)I-2, (1,2), & (FAP 10)

## SCHEDULE OF QUANTITIES

### 40600100 - BITUMINOUS MATERIALS (PRIME COAT) & Z0063804 MICRO-SURFACING, SINGLE PASS, TYPE II, MIXTURE D

LOCATION	RAMP OR DIRECTION	STATION	TO	STATION	# OF LINES	LENGTH (FT)	WIDTH (FT)	MICRO-SURFACING AREA (SQ. YD.)	PRIME COAT (GALLONS)
FAP 693 (IL 9)	E.B. & W.B.	889+23	-	900+78	4.0	4620.0	2.0	1026.7	102.7
FAP 693 (IL 9)	E.B. & W.B.	900+78	-	916+58	5.0	7900.0	2.0	1755.6	175.6
FAP 693 SECTION 1 SUBTOTAL =								2782.2	278.2
FAP 693 (IL 9)	SE RAMP	10+27	-	16+58	1.0	631.0	2.0	140.2	14.0
FAP 693 (IL 9)	SE RAMP	10+60	-	16+58	1.0	598.0	2.0	132.9	13.3
FAP 693 (IL 9)	NW RAMP	10+34	-	16+85	1.0	651.0	2.0	144.7	14.5
FAP 693 (IL 9)	NW RAMP	10+62	-	16+52	1.0	590.0	2.0	131.1	13.1
FAP 693 (IL 9)	E.B.	152+86	-	153+39	1.0	53.0	2.0	11.8	1.2
FAP 693 (IL 9)	E.B.	154+17	-	163+17	1.0	900.0	2.0	200.0	20.0
FAP 693 (IL 9)	E.B.	162+52	-	163+12	1.0	60.0	2.0	13.3	1.3
FAP 693 (IL 9)	E.B.	152+86	-	163+17	1.0	1031.0	2.0	229.1	22.9
FAP 693 (IL 9)	E.B.	152+86	-	153+30	1.0	44.0	2.0	9.8	1.0
FAP 693 (IL 9)	E.B.	154+20	-	157+75	1.0	355.0	2.0	78.9	7.9
FAP 693 (IL 9)	E.B.	163+12	-	163+17	1.0	5.0	2.0	1.1	0.1
FAP 693 (IL 9)	E.B.	164+24	-	165+79	1.0	155.0	2.0	34.4	3.4
FAP 693 (IL 9)	E.B.	168+04	-	169+35	1.0	131.0	2.0	29.1	2.9
FAP 693 (IL 9)	E.B.	164+24	-	172+67	1.0	843.0	2.0	187.3	18.7
FAP 693 (IL 9)	E.B.	164+24	-	165+00	1.0	76.0	2.0	16.9	1.7
FAP 693 (IL 9)	E.B.	168+30	-	168+98	1.0	68.0	2.0	15.1	1.5
FAP 693 (IL 9)	E.B.	170+50	-	172+67	1.0	217.0	2.0	48.2	4.8
FAP 693 (IL 9)	E.B.	172+67	-	193+07	2.0	4080.0	2.0	906.7	90.7
FAP 693 (IL 9)	E.B.	179+53	-	185+25	1.0	572.0	2.0	127.1	12.7

▲ REVISED SHEET 4/13/11

\* 693 & 704  
\*\* (129)-2, (1,2), & (FAP 101)

FILE NAME =	USER NAME = ceerlockbn	DESIGNED BMC	REVISED 4-5-2011	<b>STATE OF ILLINOIS DEPARTMENT OF TRANSPORTATION</b>	<b>SCHEDULE OF QUANTITIES</b>			F.A.P. RTE.	SECTION	COUNTY	TOTAL SHEETS	SHEET NO.	
o:\pwork\pudot\ceerlockbn\40243284\578892-sht-schedule.dgn		DRAWN BMC	REVISED -		SCALE: N/A	SHEET NO. 1 OF 11 SHEETS	STA. -	TO STA. -	*	**	MCLEAN	55	22
		CHECKED	REVISED -		FED. ROAD DIST. NO.			ILLINOIS FED. AID PROJECT					
		DATE 12-20-2010	REVISED -	CONTRACT NO. 70892									

## SCHEDULE OF QUANTITIES

### 40600100 - BITUMINOUS MATERIALS (PRIME COAT) & 70063804 MICRO-SURFACING, SINGLE PASS, TYPE II, MIXTURE D (CONT.)

LOCATION	RAMP OR DIRECTION	STATION	TO	STATION	# OF LINES	LENGTH (FT)	WIDTH (FT)	MICRO-SURFACING AREA (SQ. YD.)	PRIME COAT (GALLONS)
FAP 693 (IL 9)	E.B.	186+63		191+56	1.0	493.0	2.0	109.6	11.0
FAP 693 (IL 9)	W.B.	155+79	-	158+87	1.0	308.0	2.0	68.4	6.8
FAP 693 (IL 9)	W.B.	153+77	-	156+87	1.0	310.0	2.0	68.9	6.9
FAP 693 (IL 9)	W.B.	158+61	-	159+39	1.0	78.0	2.0	17.3	1.7
FAP 693 (IL 9)	W.B.	162+38	-	163+17	1.0	79.0	2.0	17.6	1.8
FAP 693 (IL 9)	W.B.	152+86	-	163+17	1.0	1031.0	2.0	229.1	22.9
FAP 693 (IL 9)	W.B.	152+86	-	153+45	1.0	59.0	2.0	13.1	1.3
FAP 693 (IL 9)	W.B.	158+06	-	159+21	1.0	115.0	2.0	25.6	2.6
FAP 693 (IL 9)	W.B.	161+59	-	163+17	1.0	158.0	2.0	35.1	3.5
FAP 693 (IL 9)	W.B.	168+56	-	171+48	1.0	292.0	2.0	64.9	6.5
FAP 693 (IL 9)	W.B.	164+24	-	164+33	1.0	9.0	2.0	2.0	0.2
FAP 693 (IL 9)	W.B.	168+97	-	172+67	1.0	370.0	2.0	82.2	8.2
FAP 693 (IL 9)	W.B.	164+33	-	172+67	1.0	834.0	2.0	185.3	18.5
FAP 693 (IL 9)	W.B.	164+39	-	170+58	1.0	619.0	2.0	137.6	13.8
FAP 693 (IL 9)	W.B.	172+20	-	172+67	1.0	47.0	2.0	10.4	1.0
FAP 693 (IL 9)	W.B.	172+67	-	193+07	2.0	4080.0	2.0	906.7	90.7
FAP 693 (IL 9)	W.B.	172+68	-	177+30	1.0	462.0	2.0	102.7	10.3
FAP 693 (IL 9)	W.B.	183+70	-	189+21	1.0	551.0	2.0	122.4	12.2
FAP 693 (IL 9)	W.B.	190+24	-	193+07	1.0	283.0	2.0	62.9	6.3
FAP 693 SECTION 2 SUBTOTAL =								4719.6	472.0

▲ REVISED SHEET 4/13/11

FILE NAME =	USER NAME = cserlockbn	DESIGNED BMC	REVISED 4-5-2011	STATE OF ILLINOIS DEPARTMENT OF TRANSPORTATION	SCHEDULE OF QUANTITIES		F.A.P. RTE.	SECTION	COUNTY	TOTAL SHEETS	SHEET NO.
et:\pw_work\lowdot\cserlockbn\02432841	570692-sht-schedule.dgn	DRAWN BMC	REVISED -		SCALE: N/A	SHEET NO. 2 OF 11 SHEETS	STA. -	TO STA. -	MCLEAN	55	23
	PLOT SCALE = 48.0000' / in.	CHECKED -	REVISED -						CONTRACT NO. 70892		
	PLOT DATE = 4/7/2011	DATE 12-20-2010	REVISED -					ILLINOIS FED. AID PROJECT			

• 693 & 704  
•• (129)I-2, (1,2)I, & (FAP 10)I

## SCHEDULE OF QUANTITIES

### 40600100 - BITUMINOUS MATERIALS (PRIME COAT) & Z0063804 MICRO-SURFACING, SINGLE PASS, TYPE II, MIXTURE D (CONT.)

LOCATION	RAMP OR DIRECTION	STATION	TO	STATION	# OF LINES	LENGTH (FT)	WIDTH (FT)	MICRO-SURFACING AREA (SQ. YD.)	PRIME COAT (GALLONS)
FAP 693 (IL 9)	E.B.	129+29	-	202+84	2.0	14710.0	2.0	3268.9	326.9
FAP 693 (IL 9)	E.B.	129+29	-	130+20	1.0	91.0	2.0	20.2	2.0
FAP 693 (IL 9)	E.B.	130+50	-	131+75	1.0	125.0	2.0	27.8	2.8
FAP 693 (IL 9)	E.B.	137+13	-	145+24	1.0	811.0	2.0	180.2	18.0
FAP 693 (IL 9)	E.B.	151+27	-	161+00	1.0	973.0	2.0	216.2	21.6
FAP 693 (IL 9)	E.B.	168+92	-	170+04	1.0	112.0	2.0	24.9	2.5
FAP 693 (IL 9)	E.B.	176+39	-	187+09	1.0	1070.0	2.0	237.8	23.8
FAP 693 (IL 9)	E.B.	190+65	-	191+77	1.0	112.0	2.0	24.9	2.5
FAP 693 (IL 9)	E.B.	197+04	-	216+75	1.0	1971.0	2.0	438.0	43.8
FAP 693 (IL 9)	E.B.	202+84	-	216+75	1.0	1391.0	2.0	309.1	30.9
FAP 693 (IL 9)	W.B.	129+29	-	216+75	2.0	17492.0	2.0	3887.1	388.7
FAP 693 (IL 9)	W.B.	130+20	-	135+58	1.0	538.0	2.0	119.6	12.0
FAP 693 (IL 9)	W.B.	140+70	-	141+49	1.0	79.0	2.0	17.6	1.8
FAP 693 (IL 9)	W.B.	143+82	-	144+89	1.0	107.0	2.0	23.8	2.4
FAP 693 (IL 9)	W.B.	152+78	-	162+16	1.0	938.0	2.0	208.4	20.8
FAP 693 (IL 9)	W.B.	168+92	-	170+04	1.0	112.0	2.0	24.9	2.5
FAP 693 (IL 9)	W.B.	177+53	-	188+67	1.0	1114.0	2.0	247.6	24.8
FAP 693 (IL 9)	W.B.	190+65	-	191+77	1.0	112.0	2.0	24.9	2.5
FAP 693 (IL 9)	W.B.	197+44	-	216+75	1.0	1931.0	2.0	429.1	42.9
FAP 693 SECTION 3 SUBTOTAL =								9730.9	973.1

▲ REVISED SHEET 4/13/11

• 693 & 704  
•• (129)I-2, (1,2)I, & (FAP 10)I

FILE NAME =	USER NAME = ceeerlookbm	DESIGNED BMC	REVISED 4-5-2011	<b>STATE OF ILLINOIS DEPARTMENT OF TRANSPORTATION</b>	<b>SCHEDULE OF QUANTITIES</b>			F.A.P. RTE.	SECTION	COUNTY	TOTAL SHEETS	SHEET NO.	
en:\ps\work\p\dot\ceerlookbm\d0243284\1070892-sht-schedule.dgn	DRAWN BMC	REVISED -						•	••	MCLEAN	55	24	
PLOT SCALE = 40,0000' / in.	CHECKED -	REVISED -			SCALE: N/A			SHEET NO. 3 OF 11 SHEETS		STA. -	TO STA. -	CONTRACT NO. 70892	
PLOT DATE = 4/7/2011	DATE 12-20-2010	REVISED -			FED. ROAD DIST. NO.		ILLINOIS FED. AID PROJECT						

## SCHEDULE OF QUANTITIES

### 40600100 - BITUMINOUS MATERIALS (PRIME COAT) & Z0063804 MICRO-SURFACING, SINGLE PASS, TYPE II, MIXTURE D (CONT.)

LOCATION	RAMP OR DIRECTION	STATION	TO	STATION	# OF LINES	LENGTH (FT)	WIDTH (FT)	MICRO-SURFACING AREA (SQ. YD.)	PRIME COAT (GALLONS)
FAP 704 (I-55 BUS)	S.B.	230+65	-	240+03	1.0	938.0	2.0	208.4	20.8
FAP 704 (I-55 BUS)	S.B.	245+91	-	247+67	1.0	176.0	2.0	39.1	3.9
FAP 704 (I-55 BUS)	S.B.	251+57	-	259+35	1.0	778.0	2.0	172.9	17.3
FAP 704 (I-55 BUS)	S.B. & N.B.	230+65	-	279+25	4.0	19440.0	2.0	4320.0	432.0
FAP 704 (I-55 BUS)	S.B.	230+65	-	238+72	1.0	807.0	2.0	179.3	17.9
FAP 704 (I-55 BUS)	S.B.	241+36	-	242+29	1.0	93.0	2.0	20.7	2.1
FAP 704 (I-55 BUS)	S.B.	246+55	-	279+25	1.0	3270.0	2.0	726.7	72.7
FAP 704 (I-55 BUS)	S.B.	231+50	-	237+66	1.0	616.0	2.0	136.9	13.7
FAP 704 (I-55 BUS)	S.B.	246+55	-	257+62	1.0	1107.0	2.0	246.0	24.6
FAP 704 (I-55 BUS)	S.B.	277+60	-	279+25	1.0	165	2.0	36.7	3.7
FAP 704 (I-55 BUS)	N.B.	230+65	-	232+81	1.0	216	2.0	48.0	4.8
FAP 704 (I-55 BUS)	N.B.	236+72	-	247+69	1.0	1097	2.0	243.8	24.4
FAP 704 (I-55 BUS)	N.B.	251+97	-	252+91	1.0	94	2.0	20.9	2.1
FAP 704 (I-55 BUS)	N.B.	256+67	-	278+58	1.0	2191	2.0	486.9	48.7
FAP 704 (I-55 BUS)	N.B.	230+65	-	233+05	1.0	240	2.0	53.3	5.3
FAP 704 (I-55 BUS)	N.B.	235+41	-	242+69	1.0	728	2.0	161.8	16.2
FAP 704 (I-55 BUS)	N.B.	246+59	-	248+31	1.0	172	2.0	38.2	3.8
FAP 704 (I-55 BUS)	N.B.	269+15	-	279+25	1.0	1010	2.0	224.4	22.4
FAP 704 SUBTOTAL =								7364.0	736.4
PROJECT TOTAL								24596.7	2459.7
USE =								24597.0	2460.0

▲ REVISED SHEET 4/13/11

• 693 & 704  
\*\* (129)I-2, (1,2)I, & (FAP 10)I

FILE NAME =	USER NAME = ceerlockbm	DESIGNED BMC	REVISED 4-5-2011	<b>STATE OF ILLINOIS DEPARTMENT OF TRANSPORTATION</b>	<b>SCHEDULE OF QUANTITIES</b>			F.A.P. RTE.	SECTION	COUNTY	TOTAL SHEETS	SHEET NO.
ca:\pwwork\pwwork\ceerlockbm\d02432841	70892-sht-schedule.dgn	DRAWN BMC	REVISED -		SCALE: N/A	SHEET NO. 4 OF 11 SHEETS	STA. -	TO STA. -	MCCLEAN	55	25	
	PLOT SCALE = 40.0000" / 1"	CHECKED -	REVISED -		FED. ROAD DIST. NO. ILLINOIS FED. AID PROJECT			CONTRACT NO. 70892				
	PLOT DATE = 4/7/2011	DATE 12-20-2010	REVISED -									

## SCHEDULE OF QUANTITIES

### 70300100 - SHORT-TERM PAVEMENT MARKING

### 70301000 - WORK ZONE PAVEMENT MARKING REMOVAL

LOCATION	RAMP OR DIRECTION	STATION	TO	STATION	# OF LINES	LENGTH (FT.)	AREA (SQ. FT.)
FAP 693 (IL 9)	E.B. & W.B.	889+23	-	916+58	4.0	1094.0	364.3
FAP 693 (IL 9)	W.B.	900+78	-	916+58	1.0	158.0	52.6
FAP 693 SECTION 1 SUBTOTAL =						1252.0	416.9
FAP 693 (IL 9)	NW RAMP	10+62	-	16+85	1.0	62.3	20.7
FAP 693 (IL 9)	NW RAMP	10+62	-	16+24	1.0	56.2	18.7
FAP 693 (IL 9)	SE RAMP	10+78	-	16+58	1.0	58.0	19.3
FAP 693 (IL 9)	SE RAMP	10+88	-	16+58	1.0	57.0	19.0
FAP 693 (IL 9)	E.B.	152+86	-	163+12	1.0	102.6	34.2
FAP 693 (IL 9)	W.B.	153+00	-	157+06	1.0	40.6	13.5
FAP 693 (IL 9)	W.B.	153+77	-	154+98	1.0	12.1	4.0
FAP 693 (IL 9)	E.B.	155+44	-	157+95	1.0	25.1	8.4
FAP 693 (IL 9)	E.B.	155+79	-	158+97	1.0	31.8	10.6
FAP 693 (IL 9)	E.B.	156+76	-	157+75	1.0	9.9	3.3
FAP 693 (IL 9)	E.B.	158+97	-	163+12	1.0	41.5	13.8
FAP 693 (IL 9)	W.B.	159+21	-	163+12	1.0	39.1	13.0
FAP 693 (IL 9)	E.B.	164+24	-	168+04	1.0	38.0	12.7
FAP 693 (IL 9)	W.B.	164+39	-	168+90	1.0	45.1	15.0
FAP 693 (IL 9)	W.B.	164+39	-	172+67	1.0	82.8	27.6
FAP 693 (IL 9)	W.B.	168+56	-	171+48	1.0	29.2	9.7
FAP 693 (IL 9)	W.B.	168+98	-	170+79	1.0	18.2	6.1
FAP 693 (IL 9)	E.B.	169+35	-	172+67	1.0	33.2	11.1
FAP 693 (IL 9)	E.B.	171+59	-	172+67	1.0	10.8	3.6

△ REVISED SHEET 4/13/11

• 693 & 704  
\*\* (129)I-2, (1,2)I, & (FAP 10)I

FILE NAME =	USER NAME = ceerlockbm	DESIGNED BMC	REVISED 4-5-2011	<b>STATE OF ILLINOIS DEPARTMENT OF TRANSPORTATION</b>	<b>SCHEDULE OF QUANTITIES</b>			F.A.P. RTE.	SECTION	COUNTY	TOTAL SHEETS	SHEET NO.
en:\pwork\pwork\ceerlockbm\2243264\678932-sht-schedule.dgn	678932-sht-schedule.dgn	DRAWN BMC	REVISED -		SCALE: N/A	SHEET NO. 5 OF 11 SHEETS	STA. -	TO STA. -	MCLEAN	55	26	
	PLOT SCALE = 48.0000' / in.	CHECKED -	REVISED -		FED. ROAD DIST. NO.			ILLINOIS FED. AID PROJECT				
	PLOT DATE = 4/7/2011	DATE 12-20-2010	REVISED -		<b>CONTRACT NO. 70892</b>							

## SCHEDULE OF QUANTITIES

### 70300100 - SHORT-TERM PAVEMENT MARKING (CONT.)

### 70301000 - WORK ZONE PAVEMENT MARKING REMOVAL (CONT.)

LOCATION	RAMP OR DIRECTION	STATION	TO	STATION	# OF LINES	LENGTH (FT.)	AREA (SQ. FT.)
FAP 693 (IL 9)	E.B./W.B.	173+55	-	183+54	2.0	199.8	66.5
FAP 693 (IL 9)	W.B.	173+55	-	175+20	1.0	16.5	5.5
FAP 693 (IL 9)	W.B. SHOULDER	173+55	-	183+91	1.0	41.4	13.8
FAP 693 (IL 9)	W.B. SHOULDER	185+19	-	189+21	1.0	16.1	5.4
FAP 693 (IL 9)	W.B.	185+19	-	186+57	1.0	13.8	4.6
FAP 693 (IL 9)	E.B./W.B.	185+19	-	190+24	2.0	101.0	33.6
FAP 693 (IL 9)	W.B.	191+08	-	193+07	2.0	39.8	13.3
FAP 693 (IL 9)	E.B.	191+25	-	193+07	1.0	18.2	6.1
FAP 693 (IL 9)	E.B.	176+48	-	184+20	1.0	77.2	25.7
FAP 693 (IL 9)	E.B.	185+19	-	190+59	1.0	54.0	18.0
FAP 693 (IL 9)	E.B./W.B.	191+08	-	193+07	2.0	39.8	13.3
FAP 693 (IL 9)	E.B.	179+53	-	183+54	1.0	40.1	13.4
FAP 693 (IL 9)	E.B.	188+52	-	190+24	1.0	17.2	5.7
FAP 693 SECTION 2 SUBTOTAL =						1468.4	489.0
FAP 693 (IL 9)	E.B.	129+29	-	130+50	1.0	12.1	4.0
FAP 693 (IL 9)	E.B.	131+75	-	148+82	1.0	170.7	56.8
FAP 693 (IL 9)	E.B.	144+89	-	157+00	1.0	121.1	40.3
FAP 693 (IL 9)	E.B.	158+20	-	183+11	1.0	249.1	83.0
FAP 693 (IL 9)	E.B.	184+22	-	203+54	1.0	193.2	64.3
FAP 693 (IL 9)	W.B.	129+29	-	143+82	1.0	145.3	48.4
FAP 693 (IL 9)	W.B.	144+89	-	156+84	1.0	119.5	39.8
FAP 693 (IL 9)	W.B.	158+13	-	183+11	1.0	249.8	83.2
FAP 693 (IL 9)	W.B.	184+22	-	203+15	1.0	189.3	63.0

▲ REVISED SHEET 4/13/11

FILE NAME =	USER NAME = ceo-lockbn	DESIGNED BMC	REVISED 4-5-2011	<b>STATE OF ILLINOIS DEPARTMENT OF TRANSPORTATION</b>	<b>SCHEDULE OF QUANTITIES</b>			F.A.P. RTE.	SECTION	COUNTY	TOTAL SHEETS	SHEET NO.	
at:\p\work\p\dot\ceo\lockbn\08243294\070892-sht-schedule.dgn		DRAWN BMC	REVISED -		SCALE: N/A	SHEET NO. 6 OF 11 SHEETS	STA. -	TO STA. -	*	**	MCLEAN	55	27
		CHECKED -	REVISED -		FED. ROAD DIST. NO. ILLINOIS FED. AID PROJECT								
		DATE 12-20-2010	REVISED -		CONTRACT NO. 70892								

\* 693 & 704  
\*\* (129)I-2, (1,2)I, & (FAP 10)I

## SCHEDULE OF QUANTITIES

### 70300100 - SHORT-TERM PAVEMENT MARKING (CONT.)

### 70301000 - WORK ZONE PAVEMENT MARKING REMOVAL (CONT.)

LOCATION	RAMP OR DIRECTION	STATION	TO	STATION	# OF LINES	LENGTH (FT.)	AREA (SQ. FT.)
FAP 693 (IL 9)	W.B.	204+77	-	212+35	1.0	75.8	25.2
FAP 693 (IL 9)	W.B. SHOULDER	129+29	-	143+82	1.0	58.1	19.4
FAP 693 (IL 9)	W.B.	131+75	-	133+31	1.0	15.6	5.2
FAP 693 (IL 9)	W.B.	144+67	-	147+25	1.0	25.8	8.6
FAP 693 (IL 9)	W.B. SHOULDER	149+30	-	156+38	1.0	28.3	9.4
FAP 693 (IL 9)	W.B.	152+78	-	156+84	1.0	40.6	13.5
FAP 693 (IL 9)	W.B.	158+13	-	160+00	1.0	18.7	6.2
FAP 693 (IL 9)	W.B. SHOULDER	158+13	-	183+00	1.0	99.5	33.1
FAP 693 (IL 9)	W.B.	177+53	-	183+11	1.0	55.8	18.6
FAP 693 (IL 9)	W.B.	184+22	-	186+24	1.0	20.2	6.7
FAP 693 (IL 9)	W.B.	184+22	-	186+33	1.0	21.1	7.0
FAP 693 (IL 9)	W.B. SHOULDER	188+60	-	202+45	1.0	55.4	18.4
FAP 693 (IL 9)	W.B.	197+44	-	203+15	1.0	57.1	19.0
FAP 693 (IL 9)	W.B.	204+77	-	212+35	2.0	151.6	50.5
FAP 693 (IL 9)	W.B.	212+35	-	216+75	1.0	44.0	14.7
FAP 693 (IL 9)	E.B.	129+29	-	130+92	1.0	16.3	5.4
FAP 693 (IL 9)	E.B. SHOULDER	131+75	-	150+23	1.0	73.9	24.6
FAP 693 (IL 9)	E.B.	139+31	-	143+82	1.0	45.1	15.0
FAP 693 (IL 9)	E.B.	152+49	-	153+38	1.0	8.9	3.0
FAP 693 (IL 9)	E.B.	153+04	-	156+84	1.0	38.0	12.7
FAP 693 (IL 9)	E.B.	158+20	-	161+00	1.0	28.0	9.3
FAP 693 (IL 9)	E.B. SHOULDER	158+20	-	182+02	1.0	95.3	31.7
FAP 693 (IL 9)	E.B.	178+09	-	183+11	1.0	50.2	16.7
FAP 693 (IL 9)	E.B.	184+22	-	187+09	1.0	28.7	9.6
FAP 693 (IL 9)	E.B. SHOULDER	184+68	-	202+45	1.0	71.1	23.7
FAP 693 (IL 9)	E.B.	199+62	-	203+15	1.0	35.3	11.8
FAP 693 (IL 9)	E.B.	204+77	-	216+75	1.0	119.8	39.9
FAP 693 SECTION 3 SUBTOTAL =						2828.3	941.8

⚠ REVISSED SHEET 4/13/11

\* 693 & 704  
\*\* (1291)-2, (1,2)I, & (FAP 10)I

FILE NAME =	USER NAME = oserlockbm	DESIGNED BMC	REVISED 4-5-2011	<b>STATE OF ILLINOIS DEPARTMENT OF TRANSPORTATION</b>	<b>SCHEDULE OF QUANTITIES</b>			F.A.P. RTE.	SECTION	COUNTY	TOTAL SHEETS	SHEET NO.	
et:\pwork\pvidot\oselockbm\0243284\	70892-sh-schedule.dgn	DRAWN BMC	REVISED -		SCALE: N/A	SHEET NO. 7 OF 11 SHEETS	STA. -	TO STA. -	*	**	MCLEAN	55	28
	PLOT SCALE = 40,0000' / in.	CHECKED -	REVISED -							CONTRACT NO. 70892			
	PLOT DATE = 4/7/2011	DATE 12-20-2010	REVISED -							ILLINOIS FED. AID PROJECT			



## SCHEDULE OF QUANTITIES

### 70300100 - SHORT-TERM PAVEMENT MARKING (CONT.)

### 70301000 - WORK ZONE PAVEMENT MARKING REMOVAL (CONT.)

LOCATION	RAMP OR DIRECTION	STATION	TO	STATION	# OF LINES	LENGTH (FT.)	AREA (SQ. FT.)
FAP 704 (I-55 BUS)	N.B. & S.B.	230+65	-	279+25	4.0	1944.0	647.4
FAP 704 (I-55 BUS)	S.B.	232+46	-	237+40	1.0	49.4	16.5
FAP 704 (I-55 BUS)	S.B.	232+46	-	238+02	1.0	55.6	18.5
FAP 704 (I-55 BUS)	S.B.	232+89	-	236+19	1.0	33.0	11.0
FAP 704 (I-55 BUS)	N.B.	237+61	-	242+09	1.0	44.8	14.9
FAP 704 (I-55 BUS)	N.B.	237+86	-	241+91	1.0	40.5	13.5
FAP 704 (I-55 BUS)	N.B.	239+06	-	241+26	1.0	22.0	7.3
FAP 704 (I-55 BUS)	N.B.	242+81	-	246+46	2.0	73.0	24.3
FAP 704 (I-55 BUS)	N.B.	247+78	-	251+87	2.0	81.8	27.2
FAP 704 (I-55 BUS)	S.B.	252+15	-	257+33	1.0	51.8	17.2
FAP 704 (I-55 BUS)	S.B.	252+36	-	257+06	1.0	47.0	15.7
FAP 704 (I-55 BUS)	S.B.	253+02	-	256+48	1.0	34.6	11.5
FAP 704 (I-55 BUS)	S.B.	258+78	-	277+05	1.0	73.1	24.3
FAP 704 (I-55 BUS)	N.B.	256+67	-	277+05	1.0	81.5	27.1
FAP 704 (I-55 BUS)	N.B.	271+44	-	277+05	1.0	56.1	18.7
FAP 704 (I-55 BUS)	S.B.	278+37	-	279+25	3.0	26.4	8.8
FAP 704 (I-55 BUS)	N.B. & S.B.	278+67	-	279+25	2.0	11.6	3.9
FAP 704 (I-55 BUS) TOTAL =						2726.2	907.8
TOTAL =						8274.9	2755.5
USE =						8275.0	2756.0

▲ REVISED SHEET 4/13/11

• 693 & 704  
\*\* (129)I-2, (L2)I, & (FAP 10)I

FILE NAME =	USER NAME = cealockbm	DESIGNED BMC	REVISED 4-5-2011	<b>STATE OF ILLINOIS DEPARTMENT OF TRANSPORTATION</b>	<b>SCHEDULE OF QUANTITIES</b>			F.A.P. RTE.	SECTION	COUNTY	TOTAL SHEETS	SHEET NO.
ci:\pwwork\pwwork\cealockbm\08243284\70892-shr-schedule.dgn	DRAWN BMC	CHECKED	REVISED -		SCALE: N/A	SHEET NO. 8 OF 11 SHEETS	STA. -	TO STA. -	MCLEAN	55	29	
PLOT SCALE = 48,0000' / 1" =	DATE 12-20-2010	REVISED -	REVISED -		FED. ROAD DIST. NO.			ILLINOIS FED. AID PROJECT				
PLOT DATE = 4/7/2011					CONTRACT NO. 70892							

## SCHEDULE OF QUANTITIES

### 78005110 - EPOXY PAVEMENT MARKING - LINE 4"

4" SKIP DASH LINES (WHITE)						
LOCATION	RAMP OR DIRECTION	STATION	TO	STATION	# OF LINES	LENGTH (FT.)
FAP 693 (IL 9)	E.B. & W.B.	889+23	-	907+58	2.0	917.5
FAP 693 (IL 9)	W.B.	906+79	-	907+58	1.0	19.8
FAP 693 (IL 9)	E.B. & W.B.	909+22	-	916+58	3.0	552.0
FAP 693 SECTION 1 SUBTOTAL =						1489.3
FAP 693 (IL 9)	E.B.	152+86	-	163+12	1.0	256.5
FAP 693 (IL 9)	W.B.	153+00	-	157+06	1.0	101.5
FAP 693 (IL 9)	E.B.	155+79	-	157+87	1.0	52.0
FAP 693 (IL 9)	W.B.	159+21	-	163+12	1.0	97.8
FAP 693 (IL 9)	NW	10+62	-	16+24	1.0	140.5
FAP 693 (IL 9)	NW	11+16.5	-	16+85	1.0	142.1
FAP 693 (IL 9)	SE	10+78	-	16+58	1.0	145.0
FAP 693 (IL 9)	SE	10+88	-	16+58	1.0	142.5
FAP 693 (IL 9)	E.B./W.B.	173+55	-	183+54	2.0	499.5
FAP 693 (IL 9)	E.B./W.B.	185+19	-	190+24	2.0	252.5
FAP 693 (IL 9)	E.B./W.B.	191+08	-	193+07	2.0	99.5
FAP 693 SECTION 2 SUBTOTAL =						1929.4
FAP 693 (IL 9)	E.B.	129+29	-	130+50	1.0	30.3
FAP 693 (IL 9)	E.B.	131+75	-	143+82	1.0	301.8
FAP 693 (IL 9)	E.B.	144+89	-	157+00	1.0	302.8
FAP 693 (IL 9)	E.B.	158+20	-	183+11	1.0	622.8
FAP 693 (IL 9)	E.B.	184+22	-	198+58	1.0	359.0
FAP 693 (IL 9)	W.B.	129+29	-	143+82	1.0	363.3
FAP 693 (IL 9)	W.B.	144+89	-	156+84	1.0	298.8
FAP 693 (IL 9)	W.B.	158+13	-	183+11	1.0	624.5
FAP 693 (IL 9)	W.B.	184+22	-	203+15	1.0	473.3
FAP 693 (IL 9)	W.B.	204+77	-	212+35	1.0	189.5
FAP 693 SECTION 3 SUBTOTAL =						3565.8

### 78005110 - EPOXY PAVEMENT MARKING - LINE 4" (CONT.)

4" SKIP DASH LINES (WHITE) (CONT.)						
LOCATION	RAMP OR DIRECTION	STATION	TO	STATION	# OF LINES	LENGTH (FT.)
FAP 704 (I-55 BUS)	N.B. & S.B.	230+65	-	231+00	4.0	35.0
FAP 704 (I-55 BUS)	S.B.	232+46	-	241+36	2.0	445.0
FAP 704 (I-55 BUS)	N.B.	232+81	-	241+91	2.0	455.0
FAP 704 (I-55 BUS)	S.B.	232+89	-	236+19	1.0	82.5
FAP 704 (I-55 BUS)	N.B.	238+87	-	241+26	1.0	59.8
FAP 704 (I-55 BUS)	S.B.	242+40	-	246+46	2.0	203.0
FAP 704 (I-55 BUS)	N.B.	242+81	-	246+46	2.0	182.5
FAP 704 (I-55 BUS)	S.B.	247+78	-	251+48	3.0	277.5
FAP 704 (I-55 BUS)	N.B.	247+78	-	251+87	2.0	204.5
FAP 704 (I-55 BUS)	S.B.	252+36	-	277+05	2.0	1234.5
FAP 704 (I-55 BUS)	N.B.	253+02	-	277+05	2.0	1201.5
FAP 704 (I-55 BUS)	S.B.	253+02	-	256+48	1.0	86.5
FAP 704 (I-55 BUS)	S.B.	278+37	-	279+25	2.0	44.0
FAP 704 (I-55 BUS)	N.B. & S.B.	278+67	-	279+25	2.0	29.0
FAP 704 (I-55 BUS) TOTAL =						4540.3
4" SKIP-DASH (WHITE) TOTAL =						11524.7

### 4" SKIP-DASH (YELLOW)

LOCATION	RAMP OR DIRECTION	STATION	TO	STATION	# OF LINES	LENGTH (FT.)
FAP 693 (IL 9)	E.B. & W.B.	889+23	-	905+84	2.0	830.5
FAP 693 (IL 9)	E.B. & W.B.	905+84	-	907+58	1.0	43.5
FAP 693 SECTION 1 SUBTOTAL =						874.0
FAP 704 (I-55 BUS)	-	-	-	-	-	-
4" SKIP-DASH (YELLOW) TOTAL =						874.0

**REVISSED SHEET 4/13/11**

• 693 & 704  
•• (129)I-2, (L2)I, & (FAP 10)I

FILE NAME =	USER NAME = ceerlockm	DESIGNED BMC	REVISED 4-5-2011	<b>STATE OF ILLINOIS DEPARTMENT OF TRANSPORTATION</b>	<b>SCHEDULE OF QUANTITIES</b>	F.A.P. RTE.	SECTION	COUNTY	TOTAL SHEETS	SHEET NO.
et:\pwork\pindot\ceerlockm\02243284\70892-sht-schedu1.dgn		DRAWN BMC	REVISED -			*	**	MCLEAN	55	30
PLOT SCALE = 48,0000' / in.		CHECKED -	REVISED -							
PLOT DATE = 4/7/2011		DATE 12-20-2010	REVISED -							
				SCALE: N/A	SHEET NO. 9 OF 11 SHEETS	STA. -	TO STA. -	FED. ROAD DIST. NO. (ILLINOIS) FED. AID PROJECT		
							CONTRACT NO. 70892			

## SCHEDULE OF QUANTITIES

### 78005110 - EPOXY PAVEMENT MARKING - LINE 4" (CONT.)

4" LANE LINE EXTENSION (WHITE)						
LOCATION	RAMP OR DIRECTION	STATION	TO	STATION	# OF LINES	LENGTH (FT.)
FAP 693 (IL 9)	W.B.	910+77	-	912+54	1.0	59.0
FAP 693 (IL 9)	E.B.	913+08	-	915+38	1.0	76.7
FAP 693 SECTION 1 SUBTOTAL =						135.7
FAP 693 (IL 9)	E.B.	174+31	-	176+48	1.0	72.3
FAP 693 (IL 9)	E.B.	179+53	-	181+62	1.0	69.7
FAP 693 (IL 9)	E.B.	179+69	-	181+62	1.0	64.3
FAP 693 (IL 9)	E.B.	186+57	-	189+21	1.0	88.0
FAP 693 SECTION 2 SUBTOTAL =						294.3
FAP 693 (IL 9)	E.B.	151+27	-	153+04	1.0	59.0
FAP 693 (IL 9)	W.B.	160+00	-	162+16	1.0	72.0
FAP 693 (IL 9)	W.B.	186+24	-	188+67	1.0	81.0
FAP 693 SECTION 3 SUBTOTAL =						212.0
FAP 704 (I-55 BUS)						
4" LANE LINE EXTENSION (WHITE) TOTAL =						642.0

4" SOLID (YELLOW-SINGLE)						
LOCATION	RAMP OR DIRECTION	STATION	TO	STATION	# OF LINES	LENGTH (FT.)
FAP 693 (IL 9)	E.B. & W.B.	889+23	-	907+58	2.0	3670.0
FAP 693 SECTION 1 SUBTOTAL =						3670.0
FAP 704 (I-55 BUS)	S.B.	258+78	-	277+05	1.0	1827.0
FAP 704 (I-55 BUS)	N.B.	256+67	-	277+05	1.0	2038.0
FAP 704 (I-55 BUS) TOTAL =						3865.0
4" SOLID (YELLOW-SINGLE) TOTAL =						7535.0

### 78005110 - EPOXY PAVEMENT MARKING - LINE 4" (CONT.)

4" SOLID (YELLOW-DOUBLE)						
LOCATION	RAMP OR DIRECTION	STATION	TO	STATION	# OF LINES	LENGTH (FT.)
FAP 693 (IL 9)	E.B. & W.B.	909+22	-	913+08	1.0	772.0
FAP 693 (IL 9)	W.B.	912+54	-	916+58	1.0	808.0
FAP 693 SECTION 1 SUBTOTAL =						1580.0
FAP 693 (IL 9)	E.B. & W.B.	152+78	-	156+84	2.0	1624.0
FAP 693 (IL 9)	E.B. & W.B.	158+20	-	161+00	2.0	1120.0
FAP 693 (IL 9)	E.B. & W.B.	177+53	-	183+11	1.0	1116.0
FAP 693 (IL 9)	E.B. & W.B.	184+22	-	187+09	2.0	1148.0
FAP 693 (IL 9)	E.B. & W.B.	197+44	-	199+62	2.0	872.0
FAP 693 (IL 9)	E.B. & W.B.	199+62	-	203+15	1.0	706.0
FAP 693 (IL 9)	E.B. & W.B.	204+77	-	216+75	1.0	2396.0
FAP 693 SECTION 3 SUBTOTAL =						8982.0
FAP 704 (I-55 BUS)						
4" SOLID (YELLOW-DOUBLE) TOTAL =						10562.0

### 78005110 - EPOXY PAVEMENT MARKING - LINE 4" (CONT.)

4" SOLID (WHITE)						
LOCATION	RAMP OR DIRECTION	STATION	TO	STATION	# OF LINES	LENGTH (FT.)
FAP 693 (IL 9)	E.B.	906+48	-	907+58	1.0	110.0
FAP 693 (IL 9)	W.B.	909+22	-	910+77	1.0	155.0
FAP 693 (IL 9)	E.B.	915+38	-	916+52	1.0	114.0
FAP 693 SECTION 1 SUBTOTAL =						379.0

▲ REVISED SHEET 4/13/11

• 693 & 704  
•• (1291)-2, (1,2)I, & (FAP 101)

FILE NAME =	USER NAME = ceer-lockbm	DESIGNED BMC	REVISED 4-5-2011	STATE OF ILLINOIS DEPARTMENT OF TRANSPORTATION	SCHEDULE OF QUANTITIES	F.A.P. RTE.	SECTION	COUNTY	TOTAL SHEETS	SHEET NO.
at:\p\work\p\widot\ceerlockbm\d8243284\78005110-sht-schedule.dgn		DRAWN BMC	REVISED -			*	**	MCLEAN	55	31
PLOT SCALE = 40,0000' / 1" =		CHECKED -	REVISED -		SCALE: N/A					
PLOT DATE = 4/7/2011		DATE 12-20-2010	REVISED -		SHEET NO. 10 OF 11 SHEETS	STA. -	TO STA. -	FED. ROAD DIST. NO.	ILLINOIS FED. AID PROJECT	CONTRACT NO. 70892

78005110 - EPOXY PAVEMENT MARKING - LINE 4" (CONT.)

SCHEDULE OF QUANTITIES

4" SOLID (WHITE) (CONT.)

78005110 - EPOXY PAVEMENT MARKING - LINE 4" (CONT.)

LOCATION	RAMP OR DIRECTION	STATION	TO	STATION	# OF LINES	LENGTH (FT.)
FAP 693 (IL 9)	NW RAMP	10+62	-	11+16.5	1.0	54.5
FAP 693 (IL 9)	W.B.	153+77	-	154+98	2.0	242.0
FAP 693 (IL 9)	E.B.	155+44	-	157+95	1.0	251.0
FAP 693 (IL 9)	W.B.	157+87	-	158+87	1.0	100.0
FAP 693 (IL 9)	E.B.	158+97	-	163+12	1.0	415.0
FAP 693 (IL 9)	W.B.	164+39	-	168+90	1.0	451.0
FAP 693 (IL 9)	W.B.	168+56	-	169+89	1.0	133.0
FAP 693 (IL 9)	W.B.	168+97	-	170+79	2.0	364.0
FAP 693 (IL 9)	E.B.	171+59	-	172+67	1.0	108.0
FAP 693 (IL 9)	W.B.	173+55	-	183+90	1.0	1035.0
FAP 693 (IL 9)	W.B.	173+55	-	175+20	1.0	165.0
FAP 693 (IL 9)	E.B.	176+48	-	179+69	1.0	321.0
FAP 693 (IL 9)	E.B.	181+62	-	183+54	2.0	384.0
FAP 693 (IL 9)	E.B.	183+54	-	184+20	1.0	66.0
FAP 693 (IL 9)	W.B.	185+19	-	186+57	1.0	138.0
FAP 693 (IL 9)	W.B.	185+19	-	189+21	1.0	402.0
FAP 693 (IL 9)	E.B.	187+50	-	190+59	1.0	309.0
FAP 693 (IL 9)	E.B.	191+08	-	191+58	1.0	50.0
FAP 693 (IL 9)	W.B.	191+08	-	193+07	1.0	199.0
FAP 693 (IL 9)	W.B.	191+25	-	193+07	1.0	182.0
FAP 693 SECTION 2 SUBTOTAL =						5369.5
FAP 693 (IL 9)	E.B.	129+29	-	130+92	1.0	163.0
FAP 693 (IL 9)	E.B. SHOULDER	129+29	-	130+20	1.0	91.0
FAP 693 (IL 9)	E.B. SHOULDER	131+75	-	150+23	1.0	1848.0
FAP 693 (IL 9)	E.B.	139+31	-	143+82	1.0	451.0
FAP 693 (IL 9)	E.B.	152+49	-	157+00	1.0	451.0
FAP 693 (IL 9)	E.B.	153+04	-	156+84	1.0	380.0

LOCATION	RAMP OR DIRECTION	STATION	TO	STATION	# OF LINES	LENGTH (FT.)
FAP 693 (IL 9)	E.B. SHOULDER	158+20	-	182+02	1.0	2382.0
FAP 693 (IL 9)	E.B.	178+09	-	183+11	1.0	502.0
FAP 693 (IL 9)	E.B. SHOULDER	184+68	-	202+84	1.0	1816.0
FAP 693 (IL 9)	E.B.	198+58	-	203+54	1.0	496.0
FAP 693 (IL 9)	E.B.	199+62	-	203+15	1.0	353.0
FAP 693 (IL 9)	E.B. SHOULDER	205+07	-	216+75	1.0	1168.0
FAP 693 (IL 9)	W.B. SHOULDER	129+29	-	143+82	1.0	1453.0
FAP 693 (IL 9)	W.B.	131+79	-	133+31	1.0	152.0
FAP 693 (IL 9)	W.B.	144+67	-	147+25	1.0	258.0
FAP 693 (IL 9)	W.B. SHOULDER	149+30	-	156+38	1.0	708.0
FAP 693 (IL 9)	W.B. SHOULDER	158+13	-	182+81	1.0	2468.0
FAP 693 (IL 9)	W.B.	158+20	-	160+00	1.0	180.0
FAP 693 (IL 9)	W.B.	184+22	-	186+24	1.0	202.0
FAP 693 (IL 9)	W.B.	184+22	-	186+33	1.0	211.0
FAP 693 (IL 9)	W.B. SHOULDER	188+60	-	202+45	1.0	1385.0
FAP 693 (IL 9)	W.B.	204+77	-	207+82	1.0	305.0
FAP 693 (IL 9)	W.B.	204+77	-	216+75	1.0	1198.0
FAP 693 SECTION 3 SUBTOTAL =						18621.0

78005110 - EPOXY PAVEMENT MARKING - LINE 4" (CONT.)

LOCATION	RAMP OR DIRECTION	STATION	TO	STATION	# OF LINES	LENGTH (FT.)
FAP 704 (I-55 BUS)	N.B. & S.B.	230+65	-	231+00	2.0	70.0
FAP 704 (I-55 BUS)	S.B.	232+46	-	238+02	1.0	556.0
FAP 704 (I-55 BUS)	S.B.	232+46	-	237+40	1.0	494.0
FAP 704 (I-55 BUS)	N.B.	237+61	-	242+09	1.0	448.0
FAP 704 (I-55 BUS)	N.B.	237+86	-	241+91	1.0	405.0
FAP 704 (I-55 BUS)	N.B.	242+81	-	246+46	1.0	365.0
FAP 704 (I-55 BUS)	S.B.	247+78	-	251+48	1.0	370.0
FAP 704 (I-55 BUS)	S.B.	252+15	-	257+33	1.0	518.0
FAP 704 (I-55 BUS)	S.B.	252+36	-	257+06	1.0	470.0
FAP 704 (I-55 BUS)	N.B.	271+44	-	277+05	1.0	561.0
FAP 704 (I-55 BUS)	S.B.	278+37	-	279+25	1.0	88.0
FAP 704 (I-55 BUS) TOTAL =						4345.0

4" SOLID (WHITE) TOTAL = 28714.5

PROJECT TOTAL = 59852.2

USE = 59853.0

REVISI<sup>o</sup> SHEET 4/13/11

FILE NAME =	USER NAME = ceerlockbn	DESIGNED BMC	REVISED 4-5-2011	STATE OF ILLINOIS DEPARTMENT OF TRANSPORTATION	SCHEDULE OF QUANTITIES			F.A.P. RTE.	SECTION	COUNTY	TOTAL SHEETS	SHEET NO.	
cr:\pwwork\pwwork\ceerlockbn\j8243264\78005110-sht-schedule.dgn	DRAWN BMC	REVISED -	REVISED -					*	**	MCLEAN	55	32	
PLOT SCALE = 48.0000' / 1" =	CHECKED -	REVISED -	REVISED -		SCALE: N/A			SHEET NO. 11 OF 11 SHEETS			STA. - TO STA. -	FED. ROAD DIST. NO.	ILLINOIS FED. AID PROJECT
PLOT DATE = 4/11/2011	DATE 12-20-2010	REVISED -	REVISED -		CONTRACT NO. 70892								

• 693 & 704  
\*\* (1291)-2, (1,2), & (FAP 101)

## SCHEDULE OF QUANTITIES

### 78100100 - RAISED REFLECTIVE PAVEMENT MARKERS

#### 4" SKIP-DASH (WHITE) WITH SINGLE RRPMS (FAP 693)

LOCATION	RAMP OR DIRECTION	STATION	TO	STATION	LENGTH (FT.)	# OF LINES	ONE-WAY CRYSTAL (EACH)	TWO-WAY AMBER (EACH)	ONE-WAY AMBER (EACH)
FAP 693 (IL 9)	E.B. & W.B.	889+23	-	907+58	3670.0	2.0	46	-	-
FAP 693 (IL 9)	E.B. & W.B.	909+22	-	916+58	2208.0	3.0	28	-	-
FAP 693 SECTION 1 SUBTOTAL =							74	-	-
FAP 693 (IL 9)	NW RAMP	10+62	-	16+24	562.0	1.0	16	-	-
FAP 693 (IL 9)	NW RAMP	11+16.5	-	16+85	568.5	1.0	16	-	-
FAP 693 (IL 9)	SE RAMP	10+78	-	16+58	580.0	1.0	16	-	-
FAP 693 (IL 9)	SE RAMP	10+88	-	16+58	570.0	1.0	16	-	-
FAP 693 (IL 9)	E.B.	152+86	-	163+12	1026.0	1.0	26	-	-
FAP 693 (IL 9)	W.B.	153+00	-	157+06	406.0	1.0	10	-	-
FAP 693 (IL 9)	E.B.	155+79	-	157+87	208.0	1.0	6	-	-
FAP 693 (IL 9)	W.B.	159+21	-	163+12	391.0	1.0	10	-	-
FAP 693 (IL 9)	W.B.	164+39	-	172+67	828.0	1.0	22	-	-
FAP 693 (IL 9)	E.B.	164+24	-	168+04	380.0	1.0	10	-	-
FAP 693 (IL 9)	E.B.	169+35	-	172+67	332.0	1.0	9	-	-
FAP 693 (IL 9)	W.B.	169+89	-	171+48	159.0	1.0	4	-	-
FAP 693 (IL 9)	E.B./W.B.	173+55	-	183+54	999.0	2.0	50	-	-
FAP 693 (IL 9)	E.B./W.B.	185+19	-	190+24	505.0	2.0	26	-	-
FAP 693 (IL 9)	E.B./W.B.	191+08	-	193+07	199.0	2.0	10	-	-
FAP 693 SECTION 2 SUBTOTAL =							247	-	-

### 78100100 - RAISED REFLECTIVE PAVEMENT MARKERS (CONT.)

#### 4" SKIP-DASH (WHITE) WITH SINGLE RRPMS (FAP 693) (CONT.)

LOCATION	RAMP OR DIRECTION	STATION	TO	STATION	LENGTH (FT.)	# OF LINES	ONE-WAY CRYSTAL (EACH)	TWO-WAY AMBER (EACH)	ONE-WAY AMBER (EACH)
FAP 693 (IL 9)	E.B.	129+29	-	130+50	121.0	1.0	2	-	-
FAP 693 (IL 9)	E.B.	131+75	-	143+82	1207.0	1.0	16	-	-
FAP 693 (IL 9)	E.B.	144+89	-	157+00	1211.0	1.0	16	-	-
FAP 693 (IL 9)	E.B.	158+20	-	183+11	2491.0	1.0	32	-	-
FAP 693 (IL 9)	E.B.	184+22	-	198+58	1436.0	1.0	18	-	-
FAP 693 (IL 9)	W.B.	129+29	-	143+82	1453.0	1.0	19	-	-
FAP 693 (IL 9)	W.B.	144+89	-	156+84	1195.0	1.0	15	-	-
FAP 693 (IL 9)	W.B.	158+13	-	183+11	2498.0	1.0	32	-	-
FAP 693 (IL 9)	W.B.	184+22	-	203+15	1893.0	1.0	24	-	-
FAP 693 (IL 9)	W.B.	204+77	-	212+35	758.0	1.0	10	-	-
FAP 693 SECTION 3 SUBTOTAL =							184	-	-

#### 4" SOLID/SKIP-DASH (YELLOW) WITH SINGLE RRPMS (FAP 693)

LOCATION	RAMP OR DIRECTION	STATION	TO	STATION	LENGTH (FT.)	# OF LINES	ONE-WAY CRYSTAL (EACH)	TWO-WAY AMBER (EACH)	ONE-WAY AMBER (EACH)
FAP 693 (IL 9)	E.B. & W.B.	889+23	-	905+84	3322.0	2.0	-	84	-
FAP 693 (IL 9)	W.B.	905+84	-	907+58	174.0	1.0	-	5	-
FAP 693 SECTION 1 SUBTOTAL =							-	89	-

▲ SHEET ADDED

4/13/11

\* 693 & 704  
\*\* (129)1-2, (1,2)1, & (FAP 10)1

FILE NAME =	USER NAME = ceo-lockbn	DESIGNED BMC	REVISED 4-5-2011	<b>STATE OF ILLINOIS DEPARTMENT OF TRANSPORTATION</b>	<b>SCHEDULE OF QUANTITIES</b>			F.A.P. RTE.	SECTION	COUNTY	TOTAL SHEETS	SHEET NO.
er:\pwork\puidot\ceolockbn\d243264	57892-sht-schedule.dgn	DRAWN BMC	REVISED -		SCALE: N/A	SHEET NO. 11A OF 11 SHEETS	STA. - TO STA. -	*	**	MCLEAN	55	32A
	PLOT SCALE = 40.0000' / 1"	CHECKED -	REVISED -					CONTRACT NO. 70892				
	PLOT DATE = 4/7/2011	DATE 12-20-2010	REVISED -		ILLINOIS FED. AID PROJECT							

## SCHEDULE OF QUANTITIES

### 78100100 - RAISED REFLECTIVE PAVEMENT MARKERS (CONT.)

#### 4" SOLID (WHITE) WITH SINGLE RRPMS (FAP 693) (CONT.)

ONE-WAY  
CRYSTAL  
(EACH)    TWO-WAY  
AMBER  
(EACH)    ONE-WAY  
AMBER  
(EACH)

#### 78100100 - RAISED REFLECTIVE PAVEMENT MARKERS (CONT.)

##### 4" SOLID (WHITE) WITH SINGLE RRPMS (FAP 693)

LOCATION	RAMP OR DIRECTION	STATION	TO	STATION	LENGTH (FT.)	# OF LINES	ONE-WAY CRYSTAL (EACH)	TWO-WAY AMBER (EACH)	ONE-WAY AMBER (EACH)
FAP 693 (IL 9)	E.B.	906+48	-	907+58	110.0	1.0	3	-	-
FAP 693 (IL 9)	W.B.	909+22	-	910+77	155.0	1.0	4	-	-
FAP 693 (IL 9)	E.B.	915+38	-	916+52	114.0	1.0	3	-	-
FAP SECTION 1 SUBTOTAL =							10	-	-
FAP 693 (IL 9)	NW RAMP	10+62	-	11+16.5	54.5	1.0	2	-	-
FAP 693 (IL 9)	W.B.	153+77	-	154+98	121.0	1.0	3	-	-
FAP 693 (IL 9)	E.B.	155+44	-	157+95	251.0	1.0	7	-	-
FAP 693 (IL 9)	E.B.	156+76	-	157+75	99.0	1.0	3	-	-
FAP 693 (IL 9)	E.B.	157+87	-	158+87	100.0	1.0	3	-	-
FAP 693 (IL 9)	E.B.	158+97	-	163+12	415.0	1.0	11	-	-
FAP 693 (IL 9)	W.B.	164+39	-	168+90	451.0	1.0	12	-	-
FAP 693 (IL 9)	W.B.	168+56	-	169+89	133.0	1.0	4	-	-
FAP 693 (IL 9)	W.B.	168+97	-	170+79	182.0	1.0	5	-	-
FAP 693 (IL 9)	E.B.	171+59	-	172+67	108.0	1.0	3	-	-
FAP 693 (IL 9)	W.B.	173+55	-	175+20	165.0	1.0	5	-	-
FAP 693 (IL 9)	E.B.	176+48	-	179+89	321.0	2.0	17	-	-
FAP 693 (IL 9)	E.B.	181+62	-	183+54	192.0	2.0	10	-	-
FAP 693 (IL 9)	W.B.	185+19	-	186+57	138.0	1.0	4	-	-
FAP 693 (IL 9)	E.B.	187+50	-	190+24	274.0	1.0	7	-	-
FAP 693 (IL 9)	E.B.	188+52	-	190+24	172.0	1.0	5	-	-
FAP 693 (IL 9)	W.B.	191+25	-	193+07	182.0	2.0	10	-	-
FAP SECTION 2 SUBTOTAL =							111	-	-

LOCATION	RAMP OR DIRECTION	STATION	TO	STATION	LENGTH (FT.)	# OF LINES	ONE-WAY CRYSTAL (EACH)	TWO-WAY AMBER (EACH)	ONE-WAY AMBER (EACH)
FAP 693 (IL 9)	E.B.	129+29	-	130+92	163.0	1.0	5	-	-
FAP 693 (IL 9)	E.B.	139+31	-	143+82	451.0	1.0	12	-	-
FAP 693 (IL 9)	E.B.	152+49	-	156+38	389.0	1.0	10	-	-
FAP 693 (IL 9)	E.B.	153+04	-	156+84	380.0	1.0	10	-	-
FAP 693 (IL 9)	E.B.	178+09	-	183+11	502.0	1.0	13	-	-
FAP 693 (IL 9)	E.B.	198+58	-	203+54	496.0	1.0	13	-	-
FAP 693 (IL 9)	E.B.	199+62	-	203+15	353.0	1.0	9	-	-
FAP 693 (IL 9)	W.B.	131+79	-	133+31	152.0	1.0	4	-	-
FAP 693 (IL 9)	W.B.	144+67	-	147+25	258.0	1.0	7	-	-
FAP 693 (IL 9)	W.B.	158+20	-	160+00	180.0	1.0	5	-	-
FAP 693 (IL 9)	W.B.	184+22	-	188+24	202.0	1.0	6	-	-
FAP 693 (IL 9)	W.B.	184+22	-	186+33	211.0	1.0	6	-	-
FAP 693 (IL 9)	W.B.	204+77	-	207+82	305.0	1.0	8	-	-
FAP SECTION 3 SUBTOTAL =							108	-	-

#### 4" DOUBLE SOLID (YELLOW) WITH SINGLE RRPMS (FAP 693)

ONE-WAY  
CRYSTAL  
(EACH)    TWO-WAY  
AMBER  
(EACH)    ONE-WAY  
AMBER  
(EACH)

LOCATION	RAMP OR DIRECTION	STATION	TO	STATION	LENGTH (FT.)	# OF LINES	ONE-WAY CRYSTAL (EACH)	TWO-WAY AMBER (EACH)	ONE-WAY AMBER (EACH)
FAP 693 (IL 9)	E.B.	909+22	-	910+77	155.0	1.0	-	4	-
FAP 693 (IL 9)	E.B.	910+77	-	913+08	231.0	1.0	-	-	6
FAP 693 (IL 9)	W.B.	912+54	-	915+00	246.0	1.0	-	-	7
FAP 693 (IL 9)	E.B. & W.B.	915+00	-	916+58	158.0	1.0	-	4	-
FAP SECTION 1 SUBTOTAL =							-	8	13
FAP 693 (IL 9)	E.B. & W.B.	152+78	-	156+84	406.0	2.0	-	21	-
FAP 693 (IL 9)	E.B. & W.B.	158+20	-	161+00	280.0	2.0	-	14	-
FAP 693 (IL 9)	E.B. & W.B.	177+53	-	183+11	558.0	1.0	-	14	-
FAP 693 (IL 9)	E.B. & W.B.	184+22	-	187+09	287.0	2.0	-	15	-
FAP 693 (IL 9)	E.B. & W.B.	197+44	-	199+62	218.0	2.0	-	11	-
FAP 693 (IL 9)	E.B. & W.B.	199+62	-	203+15	353.0	1.0	-	9	-
FAP 693 (IL 9)	E.B. & W.B.	204+77	-	216+75	1198.0	1.0	-	30	-
FAP SECTION 3 SUBTOTAL =							-	114	-

▲ SHEET ADDED

4/13/11

\* 693 & 704  
\*\* (129)1-2, (1,2)1, & (FAP 10)1

FILE NAME =	USER NAME = ceer-lockbn	DESIGNED BMC	REVISED 4-5-2011	<b>STATE OF ILLINOIS DEPARTMENT OF TRANSPORTATION</b>	<b>SCHEDULE OF QUANTITIES</b>			F.A.P. RTE.	SECTION	COUNTY	TOTAL SHEETS	SHEET NO.
ca:\pwwork\pwwork\ceer-lockbn\d0243264\070892-shr-schedule.dgn	DRAWN BMC	REVISIONS			SCALE: N/A	SHEET NO. 11B OF 11 SHEETS	STA. - TO STA. -	*	**	MCLEAN	55	32B
PLOT SCALE = 40.0000' / 1" =	CHECKED	REVISIONS						CONTRACT NO. 70892				
PLOT DATE = 4/7/2011	DATE 12-20-2010	REVISIONS						FED. ROAD DIST. NO.: (ILLINOIS) FED. AID PROJECT				

## SCHEDULE OF QUANTITIES

### 78100100 - RAISED REFLECTIVE PAVEMENT MARKERS (CONT.)

#### 4" SKIP-DASH (WHITE) WITH DOUBLE RRPMS (FAP 704)

LOCATION		STATION	TO	STATION	LENGTH (FT.)	# OF LINES	ONE-WAY CRYSTAL (EACH)	TWO-WAY AMBER (EACH)	ONE-WAY AMBER (EACH)
FAP 704 (I-55 BUS)	N.B. & S.B.	230+65	-	279+25	4860.0	4.0	486	-	-
FAP 704 (I-55 BUS)	S.B.	232+89	-	236+19	330.0	1.0	9	-	-
FAP 704 (I-55 BUS)	N.B.	238+87	-	241+26	239.0	1.0	6	-	-
FAP 704 (I-55 BUS)	N.B.	242+81	-	246+46	365.0	1.0	10	-	-
FAP 704 (I-55 BUS)	S.B.	247+78	-	251+48	370.0	1.0	10	-	-
FAP 704 (I-55 BUS)	S.B.	253+02	-	256+48	346.0	1.0	9	-	-
FAP 704 (I-55 BUS) SUBTOTAL =							530	-	-

#### 4" SOLID (WHITE) WITH SINGLE RRPMS (FAP 704)

LOCATION		STATION	TO	STATION	LENGTH (FT.)	# OF LINES	ONE-WAY CRYSTAL (EACH)	TWO-WAY AMBER (EACH)	ONE-WAY AMBER (EACH)
FAP 704 (I-55 BUS)	S.B.	232+46	-	237+40	494.0	1.0	13	-	-
FAP 704 (I-55 BUS)	S.B.	232+46	-	238+02	556.0	1.0	14	-	-
FAP 704 (I-55 BUS)	N.B.	237+61	-	242+09	448.0	1.0	12	-	-
FAP 704 (I-55 BUS)	N.B.	237+86	-	241+91	405.0	1.0	11	-	-
FAP 704 (I-55 BUS)	N.B.	242+81	-	246+46	365.0	1.0	10	-	-
FAP 704 (I-55 BUS)	S.B.	247+78	-	251+48	370.0	1.0	10	-	-
FAP 704 (I-55 BUS)	S.B.	252+15	-	257+33	518.0	1.0	13	-	-
FAP 704 (I-55 BUS)	S.B.	252+36	-	257+06	470.0	1.0	12	-	-
FAP 704 (I-55 BUS)	N.B.	271+44	-	277+05	561.0	1.0	14	-	-
FAP 704 (I-55 BUS) SUBTOTAL =							109	-	-

FAP 704 (I-55 BUS) TOTAL = 639      -      -

PROJECT TOTAL = 1373      211      13

USE = 1373      211      13

▲ SHEET ADDED 4/13/11

• 693 & 704  
•• (129)I-2, (1,2)I, & (FAP 10)I

FILE NAME =	USER NAME = ceerlockbn	DESIGNED BMC	REVISED 4-5-2011	<b>STATE OF ILLINOIS DEPARTMENT OF TRANSPORTATION</b>	<b>SCHEDULE OF QUANTITIES</b>			F.A.P. RTE.	SECTION	COUNTY	TOTAL SHEETS	SHEET NO.	
en:\pwork\pwork\ceerlockbn\0243284\0278992-int-schedule.dgn	DRAWN BMC	REVISED -	REVISED -		SCALE: N/A	SHEET NO. 11C OF 11 SHEETS	STA. -	TO STA. -	*	**	MCLEAN	55	32C
PLOT SCALE = 48.0000' / in.	CHECKED -	REVISED -	REVISED -					CONTRACT NO. 70892					
PLOT DATE = 4/7/2011	DATE 12-20-2010	REVISED -	REVISED -		ILLINOIS FED. AID PROJECT								

## SCHEDULE OF QUANTITIES

### 78300100 PAVEMENT MARKING REMOVAL

### 78300100 PAVEMENT MARKING REMOVAL (CONT.)

#### 4" SKIP DASH LINES (WHITE)

#### 4" SKIP DASH LINES (WHITE) (CONT.)

LOCATION	RAMP OR DIRECTION	STATION	TO	STATION	# OF LINES	LENGTH (FT.)	AREA (SQ. FT.)
FAP 693 (IL 9)	E.B. & W.B.	889+23	-	907+58	2.0	917.5	305.5
FAP 693 (IL 9)	W.B.	906+79	-	907+58	1.0	19.8	6.6
FAP 693 (IL 9)	E.B. & W.B.	909+22	-	916+58	3.0	552.0	183.8
FAP 693 SECTION 1 SUBTOTAL =							495.9
FAP 693 (IL 9)	NW RAMP	10+62	-	16+24	1.0	140.5	46.8
FAP 693 (IL 9)	NW RAMP	11+16.5	-	16+85	1.0	142.1	47.3
FAP 693 (IL 9)	SE RAMP	10+78	-	16+58	1.0	145.0	48.3
FAP 693 (IL 9)	SE RAMP	10+88	-	16+58	1.0	142.5	47.5
FAP 693 (IL 9)	E.B.	152+86	-	163+12	1.0	256.5	85.4
FAP 693 (IL 9)	W.B.	153+00	-	157+06	1.0	101.5	33.8
FAP 693 (IL 9)	E.B.	155+79	-	157+87	1.0	52.0	17.3
FAP 693 (IL 9)	W.B.	159+21	-	163+12	1.0	97.8	32.6
FAP 693 (IL 9)	E.B./W.B.	173+55	-	183+54	2.0	499.5	166.3
FAP 693 (IL 9)	E.B./W.B.	185+19	-	190+24	2.0	252.5	84.1
FAP 693 (IL 9)	E.B./W.B.	191+08	-	193+07	2.0	99.5	33.1
FAP 693 SECTION 2 SUBTOTAL =							642.5
FAP 693 (IL 9)	E.B.	129+29	-	130+50	1.0	30.3	10.1
FAP 693 (IL 9)	E.B.	131+75	-	143+82	1.0	301.8	100.5
FAP 693 (IL 9)	E.B.	144+89	-	157+00	1.0	302.8	100.8
FAP 693 (IL 9)	E.B.	158+20	-	183+11	1.0	622.8	207.4
FAP 693 (IL 9)	E.B.	184+22	-	198+58	1.0	359.0	119.5
FAP 693 (IL 9)	W.B.	129+29	-	143+82	1.0	363.3	121.0
FAP 693 (IL 9)	W.B.	144+89	-	156+84	1.0	298.8	99.5
FAP 693 (IL 9)	W.B.	158+13	-	183+11	1.0	624.5	208.0
FAP 693 (IL 9)	W.B.	184+22	-	203+15	1.0	473.3	157.6
FAP 693 (IL 9)	W.B.	204+77	-	212+35	1.0	189.5	63.1
FAP 693 SECTION 3 SUBTOTAL =							1187.4

LOCATION	RAMP OR DIRECTION	STATION	TO	STATION	# OF LINES	LENGTH (FT.)	AREA (SQ. FT.)
FAP 704 (I-55 BUS)	N.B. & S.B.	230+65	-	231+00	4.0	35.0	11.7
FAP 704 (I-55 BUS)	S.B.	232+46	-	241+36	2.0	445.0	148.2
FAP 704 (I-55 BUS)	N.B.	232+81	-	241+91	2.0	455.0	151.5
FAP 704 (I-55 BUS)	S.B.	232+89	-	236+19	1.0	82.5	27.5
FAP 704 (I-55 BUS)	N.B.	238+87	-	241+26	1.0	59.8	19.9
FAP 704 (I-55 BUS)	S.B.	242+40	-	246+46	2.0	203.0	67.6
FAP 704 (I-55 BUS)	N.B.	242+81	-	246+46	2.0	182.5	60.8
FAP 704 (I-55 BUS)	S.B.	247+78	-	251+48	3.0	277.5	92.4
FAP 704 (I-55 BUS)	N.B.	247+78	-	251+87	2.0	204.5	68.1
FAP 704 (I-55 BUS)	S.B.	252+36	-	277+05	2.0	1234.5	411.1
FAP 704 (I-55 BUS)	N.B.	253+02	-	277+05	2.0	1201.5	400.1
FAP 704 (I-55 BUS)	S.B.	253+02	-	256+48	1.0	86.5	28.8
FAP 704 (I-55 BUS)	S.B.	278+37	-	279+25	2.0	44.0	14.7
FAP 704 (I-55 BUS)	N.B. & S.B.	278+67	-	279+25	2.0	29.0	9.7
FAP 704 (I-55 BUS) TOTAL =							1511.9
4" SKIP-DASH (WHITE) TOTAL =							3837.7

#### 4" SKIP-DASH (YELLOW)

LOCATION	RAMP OR DIRECTION	STATION	TO	STATION	# OF LINES	LENGTH (FT.)	AREA (SQ. FT.)
FAP 693 (IL 9)	E.B. & W.B.	889+23	-	905+84	2.0	830.5	276.6
FAP 693 (IL 9)	E.B. & W.B.	905+84	-	907+58	1.0	43.5	14.5
FAP 693 SECTION 1 SUBTOTAL =							291.0
FAP 704 (I-55 BUS)	-	-	-	-	-	-	-
4" SKIP-DASH (YELLOW) TOTAL =							291.0

▲ SHEET ADDED

4/13/11

• 693 & 704  
\*\* (129)I-2, (1,2)I, & (FAP 10)I

FILE NAME =	USER NAME = ceer-lockbn	DESIGNED BMC	REVISED 4-5-2011	<b>STATE OF ILLINOIS DEPARTMENT OF TRANSPORTATION</b>	<b>SCHEDULE OF QUANTITIES</b>		F.A.P. RTE.	SECTION	COUNTY	TOTAL SHEETS	SHEET NO.
ce:\p\work\p\dot\ceerlockbn\id243284\678992-sht-schedule.dgn	678992-sht-schedule.dgn	DRAWN BMC	REVISED -		SCALE: N/A	SHEET NO. 110 OF 11 SHEETS	STA. -	TO STA. -	MCLEAN	55	320
PLOT SCALE = 48.0000 / in.		CHECKED -	REVISED -						CONTRACT NO. 70892		
PLOT DATE = 4/7/2011		DATE 12-20-2010	REVISED -						ILLINOIS FED. AID PROJECT		



## SCHEDULE OF QUANTITIES

### 78300100 PAVEMENT MARKING REMOVAL (CONT.)

#### 4" LANE LINE EXTENSION (WHITE)

LOCATION	RAMP OR DIRECTION	STATION	TO	STATION	# OF LINES	LENGTH (FT.)	AREA (SQ. FT.)
FAP 693 (IL 9)	W.B.	910+77	-	912+54	1.0	59.0	19.6
FAP 693 (IL 9)	E.B.	913+08	-	915+38	1.0	76.7	25.5
FAP 693 SECTION 1 SUBTOTAL =							45.2
FAP 693 (IL 9)	E.B.	174+31	-	176+48	1.0	72.3	24.1
FAP 693 (IL 9)	E.B.	179+53	-	181+62	1.0	69.7	23.2
FAP 693 (IL 9)	E.B.	179+69	-	181+62	1.0	64.3	21.4
FAP 693 (IL 9)	E.B.	186+57	-	189+21	1.0	88.0	29.3
FAP 693 SECTION 2 SUBTOTAL =							98.0
FAP 693 (IL 9)	E.B.	151+27	-	153+04	1.0	59.0	19.6
FAP 693 (IL 9)	W.B.	160+00	-	162+16	1.0	72.0	24.0
FAP 693 (IL 9)	W.B.	186+24	-	188+67	1.0	81.0	27.0
FAP 693 SECTION 3 SUBTOTAL =							70.6

FAP 704 (I-55 BUS)

#### 4" LANE LINE EXTENSION (WHITE)

213.8

#### 4" SOLID (YELLOW-SINGLE)

LOCATION	RAMP OR DIRECTION	STATION	TO	STATION	# OF LINES	LENGTH (FT.)	AREA (SQ. FT.)
FAP 693 (IL 9)	E.B. & W.B.	889+23	-	907+58	2.0	3670.0	1222.1
FAP 693 SECTION 1 SUBTOTAL =							1222.1
FAP 704 (I-55 BUS)	S.B.	258+78	-	277+05	1.0	1827.0	608.4
FAP 704 (I-55 BUS)	N.B.	256+67	-	277+05	1.0	2038.0	678.7
FAP 704 (I-55 BUS) SUBTOTAL =							1287.0
4" SOLID (YELLOW-SINGLE) =							2509.2

#### 4" SOLID (YELLOW-DOUBLE)

LOCATION	RAMP OR DIRECTION	STATION	TO	STATION	# OF LINES	LENGTH (FT.)	AREA (SQ. FT.)
FAP 693 (IL 9)	E.B. & W.B.	909+22	-	913+08	1.0	772.0	257.1
FAP 693 (IL 9)	W.B.	912+54	-	916+58	1.0	808.0	269.1
FAP 693 SECTION 1 SUBTOTAL =							526.1

### 78300100 PAVEMENT MARKING REMOVAL (CONT.)

#### 4" SOLID (YELLOW-DOUBLE) (CONT.)

LOCATION	RAMP OR DIRECTION	STATION	TO	STATION	# OF LINES	LENGTH (FT.)	AREA (SQ. FT.)
FAP 693 (IL 9)	E.B. & W.B.	152+78	-	156+84	2.0	1624.0	540.8
FAP 693 (IL 9)	E.B. & W.B.	158+20	-	161+00	2.0	1120.0	373.0
FAP 693 (IL 9)	E.B. & W.B.	177+53	-	183+11	1.0	1116.0	371.6
FAP 693 (IL 9)	E.B. & W.B.	184+22	-	187+09	2.0	1148.0	382.3
FAP 693 (IL 9)	E.B. & W.B.	197+44	-	199+62	2.0	872.0	290.4
FAP 693 (IL 9)	E.B. & W.B.	199+62	-	203+15	1.0	706.0	235.1
FAP 693 (IL 9)	E.B. & W.B.	204+77	-	216+75	1.0	2396.0	797.9
FAP 693 SECTION 3 SUBTOTAL =							2991.0

FAP 704 (I-55 BUS)

#### 4" SOLID (YELLOW-DOUBLE)

3517.1

### 78300100 PAVEMENT MARKING REMOVAL (CONT.)

#### 4" SOLID (WHITE)

LOCATION	RAMP OR DIRECTION	STATION	TO	STATION	# OF LINES	LENGTH (FT.)	AREA (SQ. FT.)
FAP 693 (IL 9)	E.B.	906+48	-	907+58	1.0	110.0	36.6
FAP 693 (IL 9)	W.B.	909+22	-	910+77	1.0	155.0	51.6
FAP 693 (IL 9)	E.B.	915+38	-	916+52	1.0	114.0	38.0
FAP 693 SECTION 1 SUBTOTAL =							126.2
FAP 693 (IL 9)	NW RAMP	10+62	-	11+16.5	1.0	54.5	18.1
FAP 693 (IL 9)	W.B.	153+77	-	154+98	2.0	242.0	80.6
FAP 693 (IL 9)	E.B.	155+44	-	157+95	1.0	251.0	83.6
FAP 693 (IL 9)	W.B.	157+87	-	158+87	1.0	100.0	33.3
FAP 693 (IL 9)	E.B.	158+97	-	163+12	1.0	415.0	138.2
FAP 693 (IL 9)	W.B.	164+39	-	168+90	1.0	451.0	150.2
FAP 693 (IL 9)	W.B.	168+56	-	169+89	1.0	133.0	44.3
FAP 693 (IL 9)	W.B.	168+97	-	170+79	2.0	364.0	121.2
FAP 693 (IL 9)	E.B.	171+59	-	172+67	1.0	108.0	36.0

▲ SHEET ADDED 4/13/11

\* 693 & 704  
\*\* (1291I-2, (1,2)I, & (FAP 101

FILE NAME =	USER NAME = ceerlockbm	DESIGNED BMC	REVISED 4-5-2011	<b>STATE OF ILLINOIS DEPARTMENT OF TRANSPORTATION</b>	<b>SCHEDULE OF QUANTITIES</b>	F.A.P. RTE.	SECTION	COUNTY	TOTAL SHEETS	SHEET NO.
en:\ps\work\psdot\ceerlockbm\02432841\78300100-sht-schedule.dgn	DRAWN BMC	REVISED -				•	••	MCLEAN	55	32E
PLOT SCALE = 40.0000' / in.	CHECKED -	REVISED -				CONTRACT NO. 70892				
PLOT DATE = 4/7/2011	DATE 12-20-2010	REVISED -				FED. ROAD DIST. NO. ILLINOIS FED. AID PROJECT				

SCALE: N/A

SHEET NO. 11E OF 11 SHEETS

STA. - TO STA. -

## SCHEDULE OF QUANTITIES

### 78300100 PAVEMENT MARKING REMOVAL (CONT.)

#### 78300100 PAVEMENT MARKING REMOVAL (CONT.)

4" SOLID (WHITE) (CONT.)							
LOCATION	RAMP OR DIRECTION	STATION	TO	STATION	# OF LINES	LENGTH (FT.)	AREA (SQ. FT.)
FAP 693 (IL 9)	W.B.	173+55	-	183+90	1.0	1035.0	344.7
FAP 693 (IL 9)	W.B.	173+55	-	175+20	1.0	165.0	54.9
FAP 693 (IL 9)	E.B.	176+48	-	179+69	1.0	321.0	106.9
FAP 693 (IL 9)	E.B.	181+62	-	183+54	2.0	384.0	127.9
FAP 693 (IL 9)	E.B.	183+54	-	184+20	1.0	66.0	22.0
FAP 693 (IL 9)	W.B.	185+19	-	186+57	1.0	138.0	46.0
FAP 693 (IL 9)	W.B.	185+19	-	189+21	1.0	402.0	133.9
FAP 693 (IL 9)	E.B.	187+50	-	190+59	1.0	309.0	102.9
FAP 693 (IL 9)	E.B.	191+08	-	191+58	1.0	50.0	16.7
FAP 693 (IL 9)	W.B.	191+08	-	193+07	1.0	199.0	66.3
FAP 693 (IL 9)	W.B.	191+25	-	193+07	1.0	182.0	60.6
FAP 693 SECTION 2 SUBTOTAL =							1788.0
FAP 693 (IL 9)	E.B.	129+29	-	130+92	1.0	163.0	54.3
FAP 693 (IL 9)	E.B. SHOULDER	129+29	-	130+20	1.0	91.0	30.3
FAP 693 (IL 9)	E.B. SHOULDER	131+75	-	150+23	1.0	1848.0	615.4
FAP 693 (IL 9)	E.B.	139+31	-	143+82	1.0	451.0	150.2
FAP 693 (IL 9)	E.B.	152+49	-	157+00	1.0	451.0	150.2
FAP 693 (IL 9)	E.B.	153+04	-	156+84	1.0	380.0	126.5
FAP 693 (IL 9)	E.B. SHOULDER	158+20	-	182+02	1.0	2382.0	793.2
FAP 693 (IL 9)	E.B.	178+09	-	183+11	1.0	502.0	167.2
FAP 693 (IL 9)	E.B. SHOULDER	184+68	-	202+84	1.0	1816.0	604.7
FAP 693 (IL 9)	E.B.	198+58	-	203+54	1.0	496.0	165.2

#### 4" SOLID (WHITE) (CONT.)

LOCATION	RAMP OR DIRECTION	STATION	TO	STATION	# OF LINES	LENGTH (FT.)	AREA (SQ. FT.)
FAP 693 (IL 9)	E.B.	199+62	-	203+15	1.0	353.0	117.5
FAP 693 (IL 9)	E.B. SHOULDER	205+07	-	216+75	1.0	1168.0	388.9
FAP 693 (IL 9)	W.B. SHOULDER	129+29	-	143+82	1.0	1453.0	483.8
FAP 693 (IL 9)	W.B.	131+79	-	133+31	1.0	152.0	50.6
FAP 693 (IL 9)	W.B.	144+67	-	147+25	1.0	258.0	85.9
FAP 693 (IL 9)	W.B. SHOULDER	149+30	-	156+38	1.0	708.0	235.8
FAP 693 (IL 9)	W.B. SHOULDER	158+13	-	182+81	1.0	2468.0	821.8
FAP 693 (IL 9)	W.B.	158+20	-	160+00	1.0	180.0	59.9
FAP 693 (IL 9)	W.B.	184+22	-	186+24	1.0	202.0	67.3
FAP 693 (IL 9)	W.B.	184+22	-	186+33	1.0	211.0	70.3
FAP 693 (IL 9)	W.B. SHOULDER	188+60	-	202+45	1.0	1385.0	461.2
FAP 693 (IL 9)	W.B.	204+77	-	207+82	1.0	305.0	101.6
FAP 693 (IL 9)	W.B.	204+77	-	216+75	1.0	1198.0	398.9
FAP 693 SECTION 3 SUBTOTAL =							6200.8
FAP 704 (I-55 BUS)	N.B. & S.B.	230+65	-	231+00	2.0	70.0	23.3
FAP 704 (I-55 BUS)	S.B.	232+46	-	238+02	1.0	556.0	185.1
FAP 704 (I-55 BUS)	S.B.	232+46	-	237+40	1.0	494.0	164.5
FAP 704 (I-55 BUS)	N.B.	237+61	-	242+09	1.0	448.0	149.2
FAP 704 (I-55 BUS)	N.B.	237+86	-	241+91	1.0	405.0	134.9
FAP 704 (I-55 BUS)	N.B.	242+81	-	246+46	1.0	365.0	121.5
FAP 704 (I-55 BUS)	S.B.	247+78	-	251+48	1.0	370.0	123.2
FAP 704 (I-55 BUS)	S.B.	252+15	-	257+33	1.0	518.0	172.5
FAP 704 (I-55 BUS)	S.B.	252+36	-	257+06	1.0	470.0	156.5
FAP 704 (I-55 BUS)	N.B.	271+44	-	277+05	1.0	561.0	186.8
FAP 704 (I-55 BUS)	S.B.	278+37	-	279+25	1.0	88.0	29.3
FAP 704 (I-55 BUS) SUBTOTAL =							1446.9
4" SOLID (WHITE) TOTAL =							9561.9
PROJECT TOTAL =							19930.8
USE =							19931.0

▲ SHEET ADDED 4/13/11

\* 693 & 704  
\*\* (129)I-2, (1,2)I, & (FAP 10)I

FILE NAME =	USER NAME = oscarlockm	DESIGNED BMC	REVISED 4-5-2011	<b>STATE OF ILLINOIS DEPARTMENT OF TRANSPORTATION</b>	<b>SCHEDULE OF QUANTITIES</b>	F.A.P. RTE.	SECTION	COUNTY	TOTAL SHEETS	SHEET NO.	
cr:\pwwork\pwwork\oscarlockm\0243284\0278992-sht=schedule.dgn	DRAWN BMC	REVISED -	REVISED -			*	**	MCLEAN	55	32F	
PLOT SCALE = 48.0000' / in.	CHECKED -	REVISED -	REVISED -			CONTRACT NO. 70892					
PLOT DATE = 4/11/2011	DATE 12-20-2010	REVISED -	REVISED -			ILLINOIS FED. AID PROJECT					

SCALE: N/A    SHEET NO. 11F OF 11 SHEETS    STA. - TO STA. -    FED. ROAD DIST. NO.    ILLINOIS FED. AID PROJECT

## SCHEDULE OF QUANTITIES

78300200 - RAISED REFLECTIVE PAVEMENT MARKERS REMOVAL (CONT.)

### 78300200 - RAISED REFLECTIVE PAVEMENT MARKERS REMOVAL

#### 4" SKIP-DASH (WHITE) WITH SINGLE RRPMS (FAP 693)

LOCATION	RAMP OR DIRECTION	STATION	TO	STATION	LENGTH (FT.)	# OF LINES	ONE-WAY CRYSTAL (EACH)	TWO-WAY AMBER (EACH)	ONE-WAY AMBER (EACH)
FAP 693 (IL 9)	E.B. & W.B.	889+23	-	907+58	3670.0	2.0	46	-	-
FAP 693 (IL 9)	E.B. & W.B.	909+22	-	916+58	2208.0	3.0	28	-	-
FAP 693 SECTION 1 SUBTOTAL =							74	-	-
FAP 693 (IL 9)	NW RAMP	10+62	-	16+24	562.0	1.0	16	-	-
FAP 693 (IL 9)	NW RAMP	11+16.5	-	16+85	568.5	1.0	16	-	-
FAP 693 (IL 9)	SE RAMP	10+78	-	16+58	580.0	1.0	16	-	-
FAP 693 (IL 9)	SE RAMP	10+88	-	16+58	570.0	1.0	16	-	-
FAP 693 (IL 9)	E.B.	152+86	-	163+12	1026.0	1.0	26	-	-
FAP 693 (IL 9)	W.B.	153+00	-	157+06	406.0	1.0	10	-	-
FAP 693 (IL 9)	E.B.	155+79	-	157+87	208.0	1.0	6	-	-
FAP 693 (IL 9)	W.B.	159+21	-	163+12	391.0	1.0	10	-	-
FAP 693 (IL 9)	W.B.	164+39	-	172+67	828.0	1.0	22	-	-
FAP 693 (IL 9)	E.B.	164+24	-	168+04	380.0	1.0	10	-	-
FAP 693 (IL 9)	E.B.	169+35	-	172+67	332.0	1.0	10	-	-
FAP 693 (IL 9)	W.B.	169+89	-	171+48	159.0	1.0	4	-	-
FAP 693 (IL 9)	E.B./W.B.	173+55	-	183+54	999.0	2.0	50	-	-
FAP 693 (IL 9)	E.B./W.B.	185+19	-	190+24	505.0	2.0	26	-	-
FAP 693 (IL 9)	E.B./W.B.	191+08	-	193+07	199.0	2.0	10	-	-
FAP 693 SECTION 2 SUBTOTAL =							248	-	-
FAP 693 (IL 9)	E.B.	129+29	-	130+50	121.0	1.0	2	-	-
FAP 693 (IL 9)	E.B.	131+75	-	143+82	1207.0	1.0	16	-	-
FAP 693 (IL 9)	E.B.	144+89	-	157+00	1211.0	1.0	16	-	-
FAP 693 (IL 9)	E.B.	158+20	-	183+11	2491.0	1.0	32	-	-
FAP 693 (IL 9)	E.B.	184+22	-	198+58	1436.0	1.0	18	-	-
FAP 693 (IL 9)	W.B.	129+29	-	143+82	1453.0	1.0	19	-	-
FAP 693 (IL 9)	W.B.	144+89	-	156+84	1195.0	1.0	15	-	-

#### 4" SKIP-DASH (WHITE) WITH SINGLE RRPMS (FAP 693) (CONT.)

LOCATION	RAMP OR DIRECTION	STATION	TO	STATION	LENGTH (FT.)	# OF LINES	ONE-WAY CRYSTAL (EACH)	TWO-WAY AMBER (EACH)	ONE-WAY AMBER (EACH)
FAP 693 (IL 9)	W.B.	158+13	-	183+11	2498.0	1.0	32	-	-
FAP 693 (IL 9)	W.B.	184+22	-	203+15	1893.0	1.0	24	-	-
FAP 693 (IL 9)	W.B.	204+77	-	212+35	758.0	1.0	10	-	-
FAP 693 SECTION 3 SUBTOTAL =							184	-	-

#### 4" SOLID/SKIP-DASH (YELLOW) WITH SINGLE RRPMS (FAP 693)

LOCATION	RAMP OR DIRECTION	STATION	TO	STATION	LENGTH (FT.)	# OF LINES	ONE-WAY CRYSTAL (EACH)	TWO-WAY AMBER (EACH)	ONE-WAY AMBER (EACH)
FAP 693 (IL 9)	E.B. & W.B.	889+23	-	905+84	3322.0	2.0	-	84	-
FAP 693 (IL 9)	W.B.	905+84	-	907+58	174.0	1.0	-	5	-
FAP 693 SECTION 1 SUBTOTAL =							-	89	-

#### 4" SOLID (WHITE) WITH SINGLE RRPMS (FAP 693)

LOCATION	RAMP OR DIRECTION	STATION	TO	STATION	LENGTH (FT.)	# OF LINES	ONE-WAY CRYSTAL (EACH)	TWO-WAY AMBER (EACH)	ONE-WAY AMBER (EACH)
FAP 693 (IL 9)	E.B.	906+48	-	907+58	110.0	1.0	3	-	-
FAP 693 (IL 9)	W.B.	909+22	-	910+77	155.0	1.0	4	-	-
FAP 693 SECTION 1 SUBTOTAL =							7	-	-
FAP 693 (IL 9)	NW RAMP	10+62	-	11+16.5	54.5	1.0	2	-	-
FAP 693 (IL 9)	W.B.	153+77	-	154+98	121.0	1.0	3	-	-
FAP 693 (IL 9)	E.B.	155+44	-	157+95	251.0	1.0	7	-	-
FAP 693 (IL 9)	E.B.	156+76	-	157+75	99.0	1.0	3	-	-
FAP 693 (IL 9)	E.B.	157+87	-	158+87	100.0	1.0	3	-	-
FAP 693 (IL 9)	E.B.	158+97	-	163+12	415.0	1.0	11	-	-
FAP 693 (IL 9)	W.B.	164+39	-	168+90	451.0	1.0	12	-	-
FAP 693 (IL 9)	W.B.	168+56	-	169+89	133.0	1.0	4	-	-
FAP 693 (IL 9)	W.B.	168+97	-	170+79	182.0	1.0	5	-	-
FAP 693 (IL 9)	E.B.	171+59	-	172+67	108.0	1.0	3	-	-
FAP 693 (IL 9)	W.B.	173+55	-	175+20	165.0	1.0	5	-	-
FAP 693 (IL 9)	E.B.	176+48	-	179+69	321.0	2.0	17	-	-

▲ SHEET ADDED 4/13/11

• 693 & 704  
•• (1291)-2, (1,2), & (FAP 101)

FILE NAME =	USER NAME = ceerlockbm	DESIGNED BMC	REVISED 4-5-2011	<b>STATE OF ILLINOIS DEPARTMENT OF TRANSPORTATION</b>	<b>SCHEDULE OF QUANTITIES</b>			F.A.P. RTE.	SECTION	COUNTY	TOTAL SHEETS	SHEET NO.
as:\pwwork\pwwork\ceerlockbm\d243284\78300200-sht-schedule.dgn	DRAWN BMC	REVISION			•	••	MCLEAN	55	326			
PLOT SCALE = 40.0000' / 1" =	CHECKED	REVISION			CONTRACT NO. 70892			FED. ROAD DIST. NO.	ILLINOIS	FED. AID PROJECT		
PLOT DATE = 4/7/2011	DATE 12-20-2010	REVISION			SCALE: N/A	SHEET NO. 116 OF 11 SHEETS	STA. - TO STA. -					

## SCHEDULE OF QUANTITIES

### 78300200 - RAISED REFLECTIVE PAVEMENT MARKERS REMOVAL (CONT.)

### 78300200 - RAISED REFLECTIVE PAVEMENT MARKERS REMOVAL (CONT.)

#### 4" SOLID (WHITE) WITH SINGLE RRPMS (FAP 693) (CONT.)

#### 4" DOUBLE SOLID (YELLOW) WITH SINGLE RRPMS (FAP 693) (CONT.)

LOCATION	RAMP OR DIRECTION	STATION	TO	STATION	LENGTH (FT.)	# OF LINES	ONE-WAY CRYSTAL (EACH)	TWO-WAY AMBER (EACH)	ONE-WAY AMBER (EACH)	LOCATION	RAMP OR DIRECTION	STATION	TO	STATION	LENGTH (FT.)	# OF LINES	ONE-WAY CRYSTAL (EACH)	TWO-WAY AMBER (EACH)	ONE-WAY AMBER (EACH)
FAP 693 (IL 9)	E.B.	181+62	-	183+54	192.0	2.0	10	-	-	FAP 693 (IL 9)	E.B. & W.B.	177+53	-	183+11	558.0	1.0	-	14	-
FAP 693 (IL 9)	W.B.	185+19	-	186+57	138.0	1.0	4	-	-	FAP 693 (IL 9)	E.B. & W.B.	184+22	-	187+09	287.0	2.0	-	15	-
FAP 693 (IL 9)	E.B.	187+50	-	190+24	274.0	1.0	7	-	-	FAP 693 (IL 9)	E.B. & W.B.	197+44	-	199+62	218.0	2.0	-	11	-
FAP 693 (IL 9)	E.B.	188+52	-	190+24	172.0	1.0	5	-	-	FAP 693 (IL 9)	E.B. & W.B.	199+62	-	203+15	353.0	1.0	-	9	-
FAP 693 (IL 9)	W.B.	191+25	-	193+07	182.0	2.0	10	-	-	FAP 693 (IL 9)	E.B. & W.B.	204+77	-	216+75	1198.0	1.0	-	30	-
FAP 693 SECTION 2 SUBTOTAL =							111	-	-	FAP 693 SECTION 3 SUBTOTAL =							-	114	-

#### 4" SKIP-DASH (WHITE) WITH DOUBLE RRPMS (FAP 704)

LOCATION	RAMP OR DIRECTION	STATION	TO	STATION	LENGTH (FT.)	# OF LINES	ONE-WAY CRYSTAL (EACH)	TWO-WAY AMBER (EACH)	ONE-WAY AMBER (EACH)	LOCATION	RAMP OR DIRECTION	STATION	TO	STATION	LENGTH (FT.)	# OF LINES	ONE-WAY CRYSTAL (EACH)	TWO-WAY AMBER (EACH)	ONE-WAY AMBER (EACH)
FAP 693 (IL 9)	E.B.	129+29	-	130+92	163.0	1.0	5	-	-	FAP 704 (I-55 BUS)	N.B. & S.B.	230+65	-	279+25	4860.0	4.0	486	-	-
FAP 693 (IL 9)	E.B.	139+31	-	143+82	451.0	1.0	12	-	-	FAP 704 (I-55 BUS)	S.B.	232+89	-	236+19	330.0	1.0	9	-	-
FAP 693 (IL 9)	E.B.	152+49	-	156+38	389.0	1.0	10	-	-	FAP 704 (I-55 BUS)	N.B.	238+87	-	241+26	239.0	1.0	6	-	-
FAP 693 (IL 9)	E.B.	153+04	-	156+84	380.0	1.0	10	-	-	FAP 704 (I-55 BUS)	N.B.	242+81	-	246+46	365.0	1.0	10	-	-
FAP 693 (IL 9)	E.B.	178+09	-	183+11	502.0	1.0	13	-	-	FAP 704 (I-55 BUS)	S.B.	247+78	-	251+48	370.0	1.0	10	-	-
FAP 693 (IL 9)	E.B.	198+58	-	203+54	496.0	1.0	13	-	-	FAP 704 (I-55 BUS)	S.B.	253+02	-	256+48	346.0	1.0	9	-	-
FAP 693 (IL 9)	W.B.	131+79	-	133+31	152.0	1.0	4	-	-	FAP 704 (I-55 BUS) SUBTOTAL =							530	-	-
FAP 693 (IL 9)	W.B.	144+67	-	147+25	258.0	1.0	7	-	-										
FAP 693 (IL 9)	W.B.	158+20	-	160+00	180.0	1.0	5	-	-										
FAP 693 (IL 9)	W.B.	184+22	-	186+24	202.0	1.0	6	-	-										
FAP 693 (IL 9)	W.B.	184+22	-	186+33	211.0	1.0	6	-	-										
FAP 693 (IL 9)	W.B.	204+77	-	207+82	305.0	1.0	8	-	-	FAP 693 SECTION 3 SUBTOTAL =							108	-	-

#### 4" DOUBLE SOLID (YELLOW) WITH SINGLE RRPMS (FAP 693)

LOCATION	RAMP OR DIRECTION	STATION	TO	STATION	LENGTH (FT.)	# OF LINES	ONE-WAY CRYSTAL (EACH)	TWO-WAY AMBER (EACH)	ONE-WAY AMBER (EACH)
FAP 693 (IL 9)	W.B.	912+54	-	915+00	404.0	1.0	-	-	7
FAP 693 (IL 9)	E.B. & W.B.	915+00	-	916+58	168.0	1.0	-	4	-
FAP 693 SECTION 1 SUBTOTAL =							-	4	7
FAP 693 (IL 9)	E.B. & W.B.	152+78	-	156+84	406.0	2.0	-	21	-
FAP 693 (IL 9)	E.B. & W.B.	158+20	-	161+00	280.0	2.0	-	14	-

▲ SHEET ADDED

4/13/11

• 693 & 704  
\*\* (129)I-2, (1,2)I, & (FAP 10)I

FILE NAME =	USER NAME = ceer-lockbn	DESIGNED BMC	REVISED 4-5-2011	<b>STATE OF ILLINOIS DEPARTMENT OF TRANSPORTATION</b>	<b>SCHEDULE OF QUANTITIES</b>			F.A.P. RTE.	SECTION	COUNTY	TOTAL SHEETS	SHEET NO.	
cr:\pwwork\pwwork\ceerlockbn\0243284\578952-sht-scheduls.dgn		DRAWN BMC	REVISED -		SCALE: N/A	SHEET NO. 11H OF 11 SHEETS	STA. -	TO STA. -	•	••	MCLEAN	55	32H
		CHECKED -	REVISED -					CONTRACT NO. 70892					
		DATE 12-20-2010	REVISED -		ILLINOIS FED. AID PROJECT								

## SCHEDULE OF QUANTITIES

### 78300200 - RAISED REFLECTIVE PAVEMENT MARKERS REMOVAL (CONT.)

### 70004005 - FIBER ASPHALT

#### 4" SOLID (WHITE) WITH SINGLE BRPMS (FAP 704)

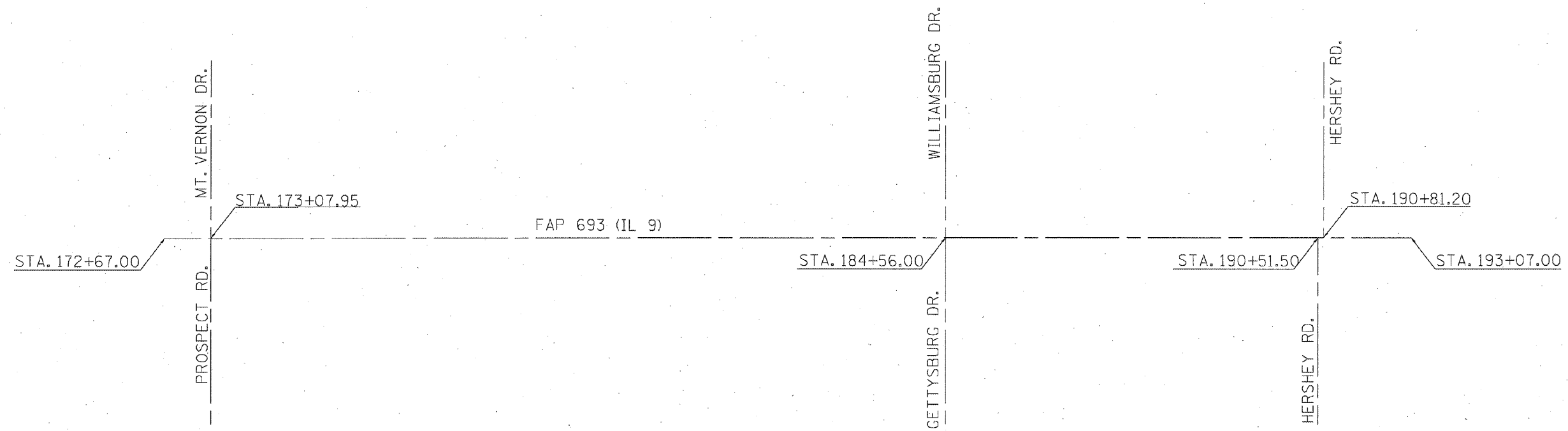
LOCATION	RAMP OR DIRECTION	STATION	TO	STATION	LENGTH (FT.)	# OF LINES	ONE-WAY CRYSTAL (EACH)	TWO-WAY AMBER (EACH)	ONE-WAY AMBER (EACH)
FAP 704 (I-55 BUS)	S.B.	232+46	-	237+40	494.0	1.0	13	-	-
FAP 704 (I-55 BUS)	S.B.	232+46	-	238+02	556.0	1.0	14	-	-
FAP 704 (I-55 BUS)	N.B.	237+61	-	242+09	448.0	1.0	12	-	-
FAP 704 (I-55 BUS)	N.B.	237+86	-	241+91	405.0	1.0	11	-	-
FAP 704 (I-55 BUS)	N.B.	242+81	-	246+46	365.0	1.0	10	-	-
FAP 704 (I-55 BUS)	S.B.	247+78	-	251+48	370.0	1.0	10	-	-
FAP 704 (I-55 BUS)	S.B.	252+15	-	257+33	518.0	1.0	13	-	-
FAP 704 (I-55 BUS)	S.B.	252+36	-	257+06	470.0	1.0	12	-	-
FAP 704 (I-55 BUS)	N.B.	271+44	-	277+05	561.0	1.0	14	-	-
FAP 704 (I-55 BUS) SUBTOTAL =							109	-	-
FAP 704 (I-55 BUS) TOTAL =							639	-	-
PROJECT TOTAL =							1371	207	7
USE =							1371	207	7

LOCATION	STATION	TO	STATION	# OF LINES	LENGTH (FT.)	% THAT REQUIRES FIBER	FIBER ASPHALT (LBS)
FAP 693 (IL 9)	889+23	-	897+31	4.0	3232.0	25.0%	331.3
FAP 693 (IL 9)	897+31	-	908+42	4.0	4444.0	50.0%	911.0
FAP 693 (IL 9)	900+78	-	908+42	1.0	764.0	50.0%	156.6
FAP 693 (IL 9)	908+42	-	916+58	5.0	4080.0	25.0%	418.2
FAP 693 SECTION 1 SUBTOTAL =							1817.1
FAP 704 (I-55 BUS)	248+31	-	251+97	2.0	732.0	50.0%	150.1
FAP 704 (I-55 BUS) SUBTOTAL =							150.1
PROJECT TOTAL =							1967.2
USE =							1968.0

▲ SHEET ADDED 4/13/11

• 693 & 704  
•• (129)I-2, (1,2)I, & (FAP 10)I

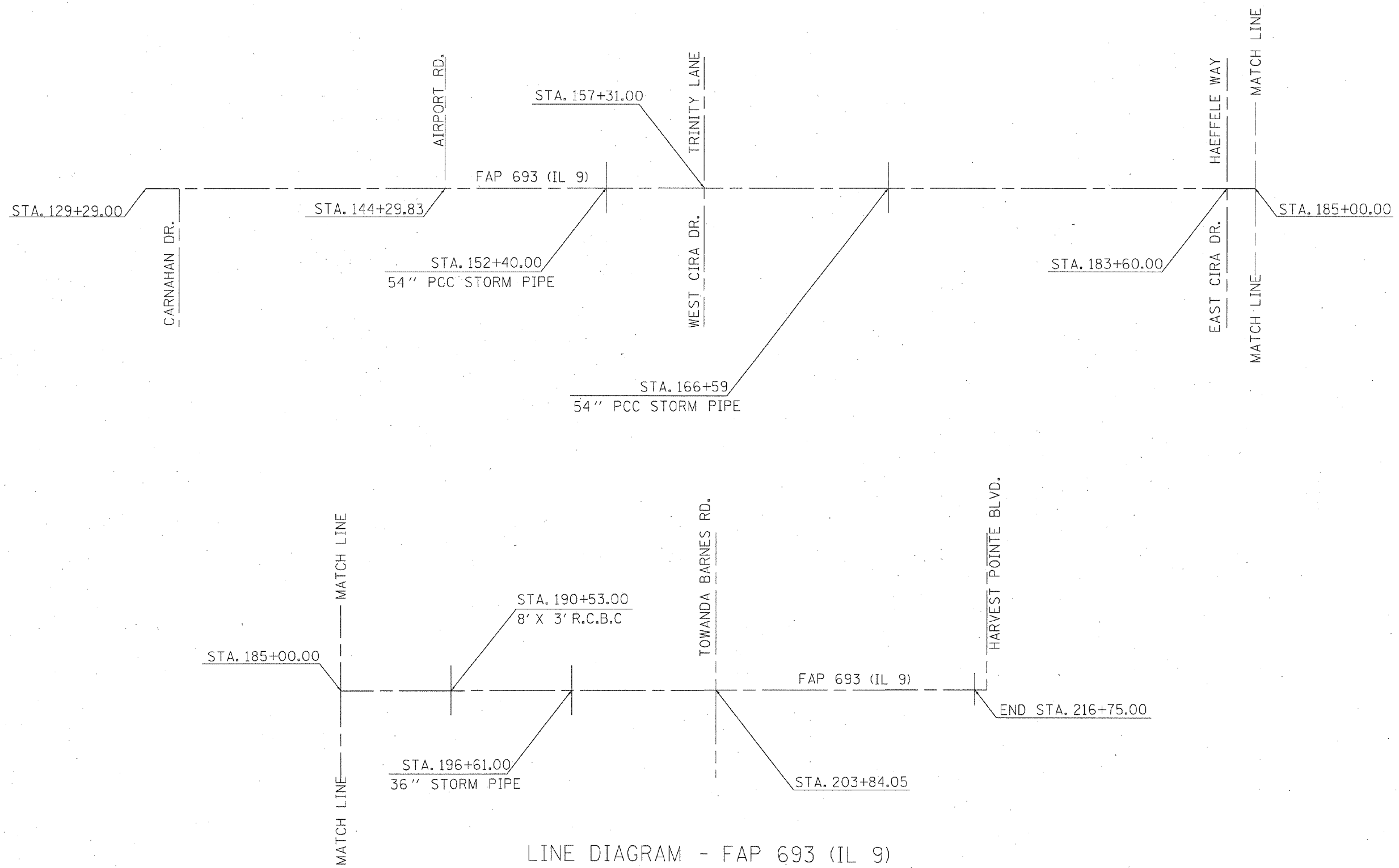
FILE NAME =	USER NAME = ceerlookbm	DESIGNED BMC	REVISED 4-5-2011	<b>STATE OF ILLINOIS DEPARTMENT OF TRANSPORTATION</b>	<b>SCHEDULE OF QUANTITIES</b>			F.A.P. RTE.	SECTION	COUNTY	TOTAL SHEETS	SHEET NO.
cr:\pw\work\pwidot\ceerlookbm\j8243284\570892-sht-schedule.dgn		DRAWN BMC	REVISED -		SCALE: N/A	SHEET NO. 111 OF 11 SHEETS	STA. - TO STA. -	*	**	MCLEAN	55	321
		CHECKED -	REVISED -					CONTRACT NO. 70892				
		DATE 12-20-2010	REVISED -		FED. ROAD DIST. NO. ILLINOIS FED. AID PROJECT							



LINE DIAGRAM - FAP 693 (IL 9)  
 STA. 172+67.00 TO STA. 193+07.00

⚠ SHEET ADDED 4/13/11

FILE NAME =	USER NAME = ceerjacob	DESIGNED BMC	REVISED -	<b>STATE OF ILLINOIS DEPARTMENT OF TRANSPORTATION</b>	<b>MICRO-SURFACING &amp; PAVEMENT MARKING DETAILS</b>	F.A.P. RTE.	SECTION	COUNTY	TOTAL SHEETS	SHEET NO.
c:\pwork\pwork\ceerjacob\0243284\157892-sht-plan.dgn	DRAWN BMC	REVISED -	*			**	MCLEAN	55	50A	
PLOT SCALE = 40.0000' / 1" =	CHECKED -	REVISED -	CONTRACT NO. 70892			ILLINOIS FED. AID PROJECT				
PLOT DATE = 4/7/2011	DATE 12-22-2010	REVISED -	SCALE: N/A			SHEET NO. 1 OF 2 SHEETS	STA. 172+67.00 TO STA. 193+07.00			



LINE DIAGRAM - FAP 693 (IL 9)  
 STA. 129+29.00 TO STA. 216+75.00

⚠ SHEET ADDED 4/13/11

FILE NAME =	USER NAME = ceerlockbm	DESIGNED BMC	REVISED -	<b>STATE OF ILLINOIS DEPARTMENT OF TRANSPORTATION</b>	<b>MICRO-SURFACING &amp; PAVEMENT MARKING DETAILS</b>			F.A.P. RTE.	SECTION	COUNTY	TOTAL SHEETS	SHEET NO.
at:\pwork\pwork\ceerlockbm\48243284\0378912-shr-plen.dgn		DRAWN BMC	REVISED -		SCALE: N/A	SHEET NO. 2 OF 2 SHEETS	STA. 129+29.00 TO STA. 216+75.00	.	**	MCLEAN	55	50B
	PLOT SCALE = 40.0000' / in.	CHECKED -	REVISED -					CONTRACT NO. 70892				
	PLOT DATE = 4/7/2011	DATE 12-22-2010	REVISED -					ILLINOIS FED. AID PROJECT				