

F.A.I. RTE.	SECTION	COUNTY	TOTAL SHEETS	SHEET NO.
74	10(5-1-RS-1,14-1,6)I	CHAMPAIGN	15	1
		ILLINOIS	CONTRACT NO. 70916	

STATE OF ILLINOIS  
DEPARTMENT OF TRANSPORTATION  
DIVISION OF HIGHWAYS

# PROPOSED HIGHWAY PLANS

FAI ROUTE 57 & 74  
SECTION 10(5-1-RS-1,14-1,6)I

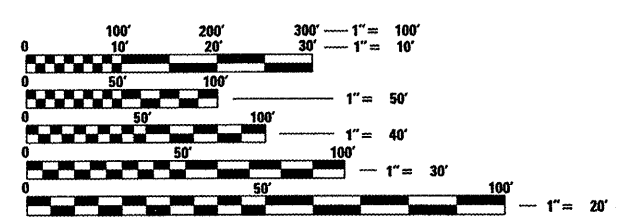
## CHAMPAIGN COUNTY

C-95-013-11

PATCHING ON THE RAMPS AT THE I-57 & I-74 INTERCHANGE

FOR INDEX OF SHEETS, SEE SHEET NO. 2  
FOR SUMMARY OF QUANTITIES, SEE SHEETS NO. 3

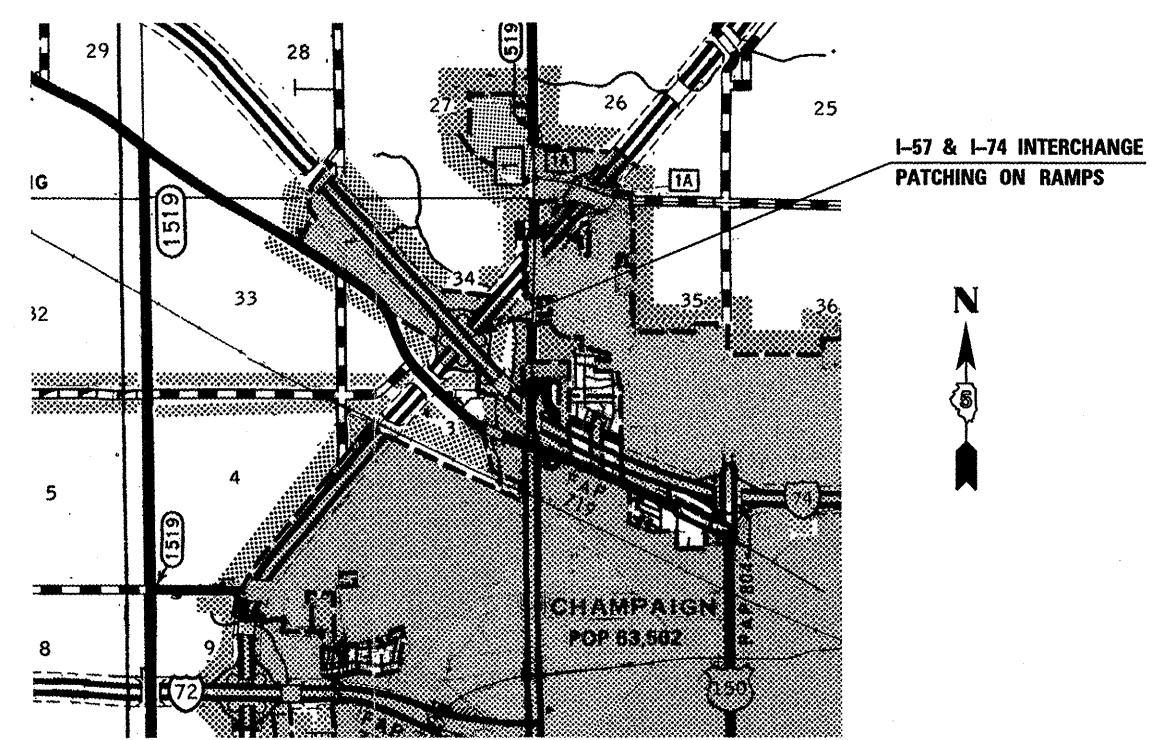
CURRENT ADT (2010)	
RAMP I-AC	= 2,150
RAMP I-DB	= 2,000
RAMP I-CB	= 550
RAMP I-AD	= 5,200
RAMP I-CA	= 2,850
RAMP I-BD	= 1,750
RAMP I-DA	= 4,600
RAMP I-BC	= 650



FULL SIZE PLANS HAVE BEEN PREPARED USING STANDARD ENGINEERING SCALES. REDUCED SIZED PLANS WILL NOT CONFORM TO STANDARD SCALES. IN MAKING MEASUREMENTS ON REDUCED PLANS, THE ABOVE SCALES MAY BE USED.

J.U.L.I.E.  
JOINT UTILITY LOCATION INFORMATION FOR EXCAVATION  
1-800-892-0123  
OR 811

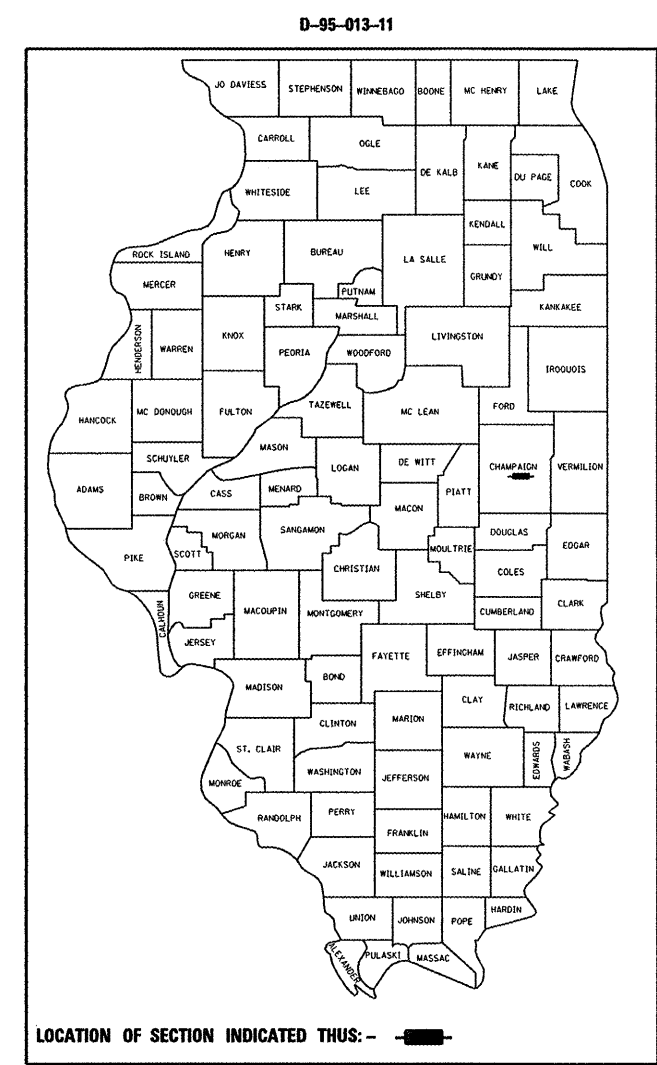
PROJECT ENGINEER KEVIN TRAPP  
PROJECT MANAGER JEFF SHERER  
PROJECT DESIGNER RANDY AUSTIN  
PHONE: 217-465-4181  
CONTRACT NO. 70916



I-57 & I-74 INTERCHANGE  
PATCHING ON RAMPS



R. 8 E.  
GROSS & NET LENGTH = 12,681.52 FT. = 2.402 MILE



STATE OF ILLINOIS  
DEPARTMENT OF TRANSPORTATION  
DIVISION OF HIGHWAYS

SUBMITTED 1/26 2011

*Joseph E. Lowe Jr.*  
DEPUTY DIRECTOR OF HIGHWAYS, REGION ENGINEER

March 25 2011  
*Scott E. Stitt P.E.*  
ACTING ENGINEER OF DESIGN AND ENVIRONMENT

March 25 2011  
*Christina M. Reed*  
DIRECTOR OF HIGHWAYS, CHIEF ENGINEER

PRINTED BY THE AUTHORITY  
OF THE STATE OF ILLINOIS