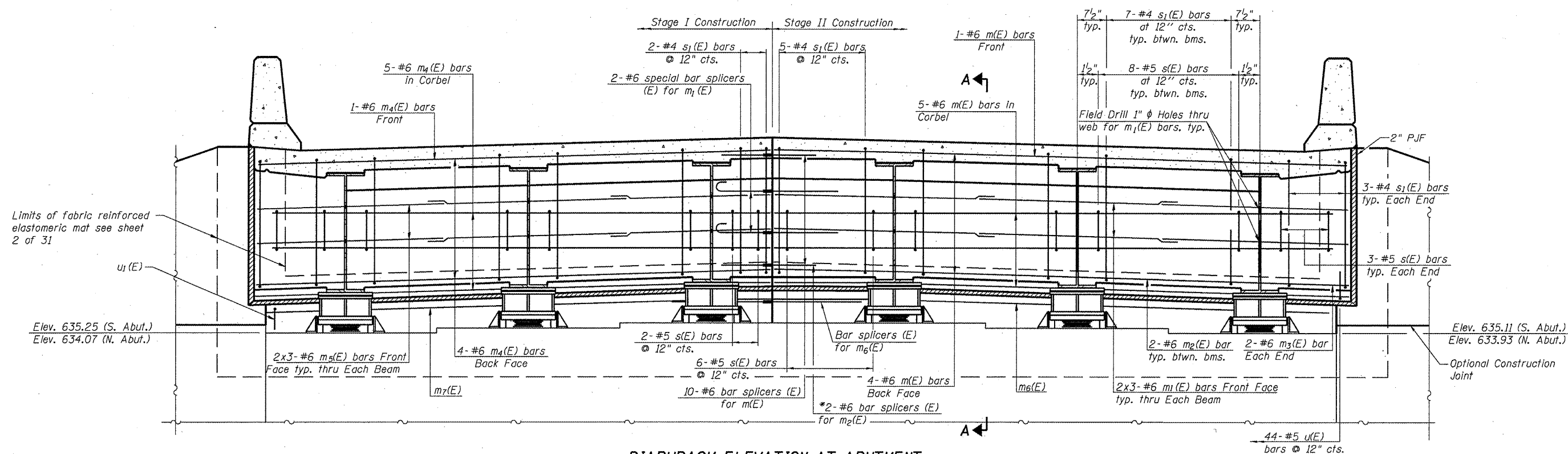


STATE OF ILLINOIS
DEPARTMENT OF TRANSPORTATION



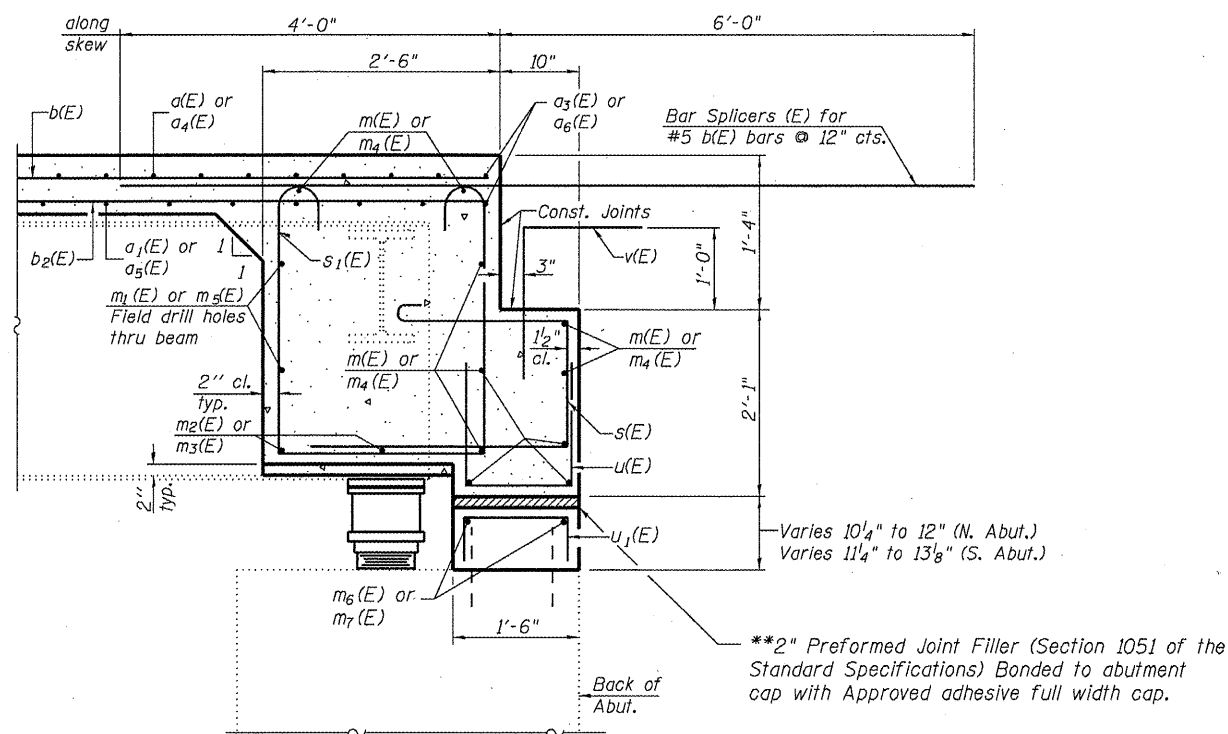
DIAPHRAGM ELEVATION AT ABUTMENT

(Looking South at South Abutment)
(North Abutment Similar)

Notes:

- Reinforcement bars in diaphragm are billed with superstructure on sheet 11 of 31.
- Concrete in diaphragm is included with Concrete Superstructure on sheet 11 of 31.
- Concrete in backwall is included with Concrete Structures on sheet 11 of 31.
- For details of bars s(E), s₁(E), v(E), u(E) & u₁(E) see sheet 11 of 31.
- For layout of u₁(E), m₆(E) & m₇(E) bars see sheet 28 of 31.
- The s(E) and s₁(E) bars shall be placed parallel to the beams. Spacing for these bars shall be at right angles to the beams.
- The cost of field drilling holes in webs for m₁(E) & m₅(E) is included in the cost of Reinforcement Bars (Epoxy Coated).

MIN. BAR LAP
#6 bar = 3'-4" (Diaphragm)



SECTION A-A

Dimensions at right angles to abutment, except as shown.

* Cut to fit at Stage line.

**Cost included with Concrete Superstructure.

**SEMI-INTEGRAL
DIAPHRAGM DETAILS
STRUCTURE NO. 059-0040 (S.B.)**

SHEET NO. 12 31 SHEETS	F.A.I. RTE.	SECTION	COUNTY	TOTAL SHEETS	SHEET NO.
	55	(59, 68)RS-3, BR	Macoupin	137	118
			CONTRACT NO. 72921		
FED. ROAD DIST. NO. 6 [ILLINOIS] FED. AID PROJECT					

REVISIED SHEET 4/20/11