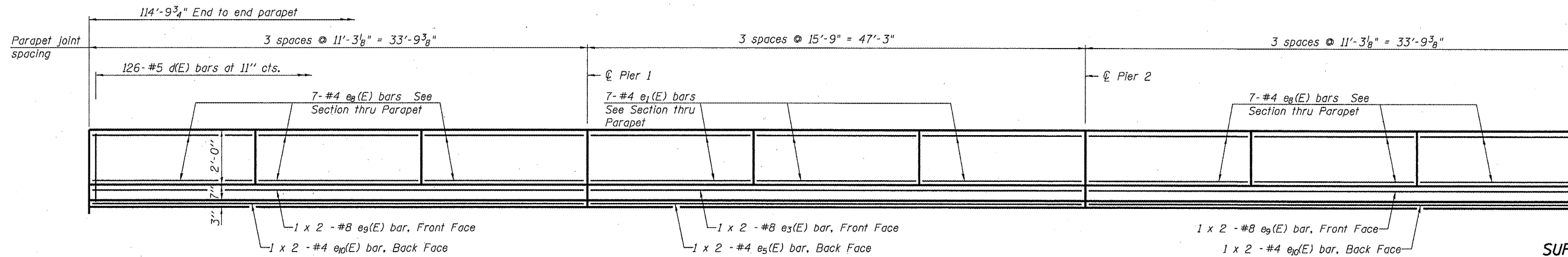


STATE OF ILLINOIS  
DEPARTMENT OF TRANSPORTATION

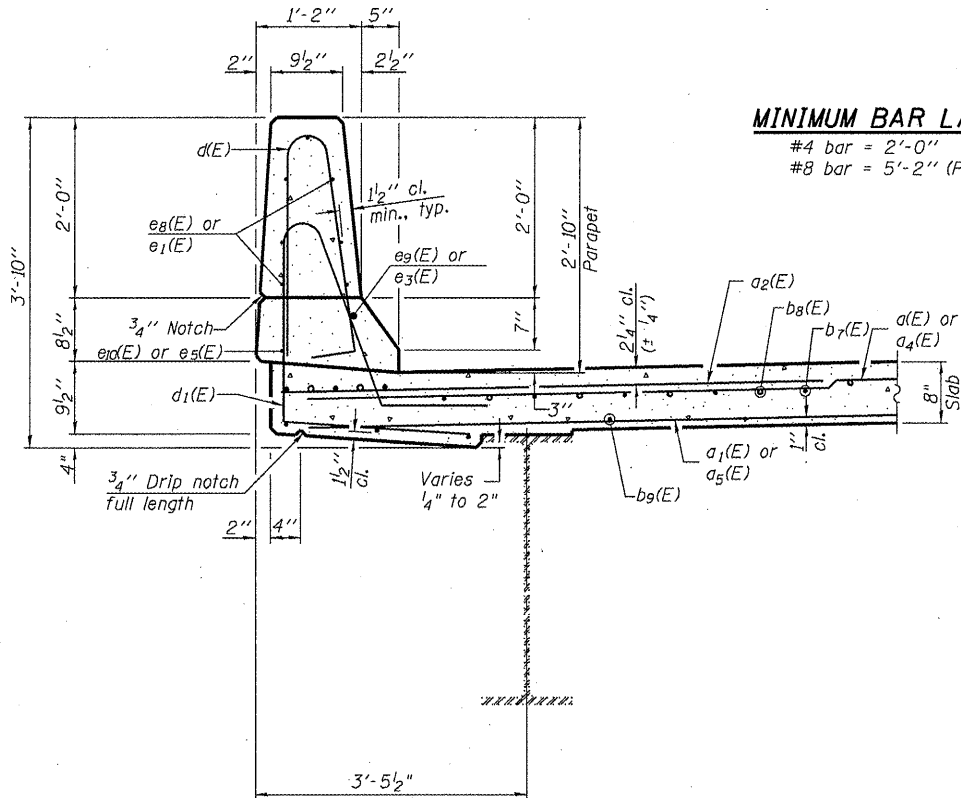


**SUPERSTRUCTURE  
BILL OF MATERIAL**

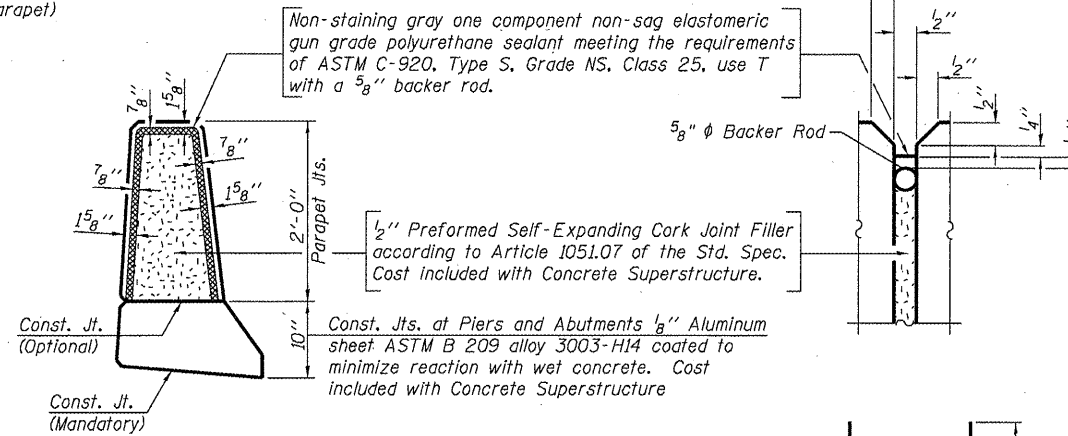
Bar	No.	Size	Length	Shape
a(E)	198	#5	22'-11"	—
a1(E)	154	#5	22'-9"	—
a2(E)	198	#6	6'-6"	—
a3(E)	4	#5	23'-7"	—
a4(E)	198	#5	18'-11"	—
a5(E)	154	#5	18'-9"	—
a6(E)	4	#5	19'-6"	—
b7(E)	230	#5	24'-11"	—
b8(E)	86	#6	28'-8"	—
b9(E)	168	#5	30'-7"	—
d(E)	252	#5	5'-7"	⌋
d1(E)	252	#5	8'-3"	⌋
e1(E)	42	#4	15'-5"	—
e3(E)	4	#8	26'-1"	—
e5(E)	4	#4	24'-6"	—
ea(E)	84	#4	11'-0"	—
eg(E)	8	#8	19'-4"	—
ed(E)	8	#4	17'-9"	—
m(E)	20	#6	23'-6"	—
m1(E)	12	#6	10'-1"	—
m2(E)	20	#6	7'-0"	—
m3(E)	8	#6	3'-0"	—
m4(E)	20	#6	19'-5"	—
m5(E)	12	#6	8'-9"	—
s(E)	92	#5	6'-9"	⌋
s1(E)	82	#4	8'-7"	⌋
u(E)	88	#5	3'-3"	U
v(E)	88	#5	3'-4"	┌
Reinforcement Bars, Epoxy Coated			Pound	41,600
Concrete Superstructure			Cu. Yds.	186.3
Bar Splicers			Each	472

Bars indicated thus 1 x 2 - #8 etc. indicates 1 line of bars with 2 lengths per line.

**INSIDE ELEVATION OF PARAPET**

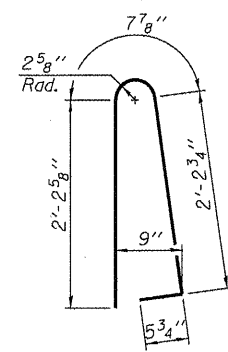


**MINIMUM BAR LAP**  
#4 bar = 2'-0"  
#8 bar = 5'-2" (Parapet)

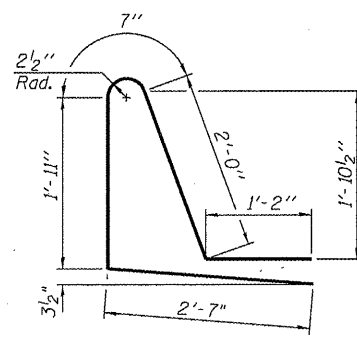


**PARAPET JOINT DETAILS**

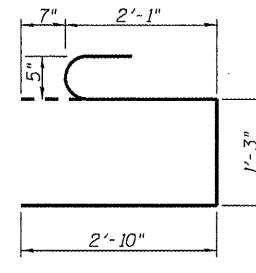
**SECTION THRU PARAPET**



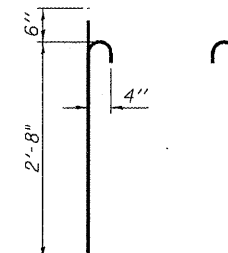
BAR d(E)



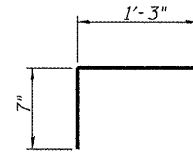
BAR d1(E)



BAR s(E)

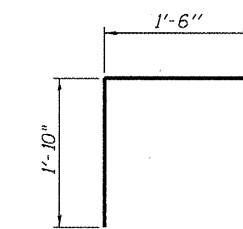


BAR s1(E)



BAR u(E)

BAR u1(E)



BAR v(E)

**SUPERSTRUCTURE DETAILS  
STRUCTURE NO. 059-0041 (N.B.)**

SHEET NO. 16	F.A.I. RTE.	SECTION	COUNTY	TOTAL SHEETS	SHEET NO.
	55	(59, 68)RS-3, BR	Macoupin	137	122
31 SHEETS	CONTRACT NO. 72921				
FED. ROAD DIST. NO. 6 ILLINOIS FED. AID PROJECT					

REVISOR'S MARK: **REVISOR'S MARK** 4/20/11