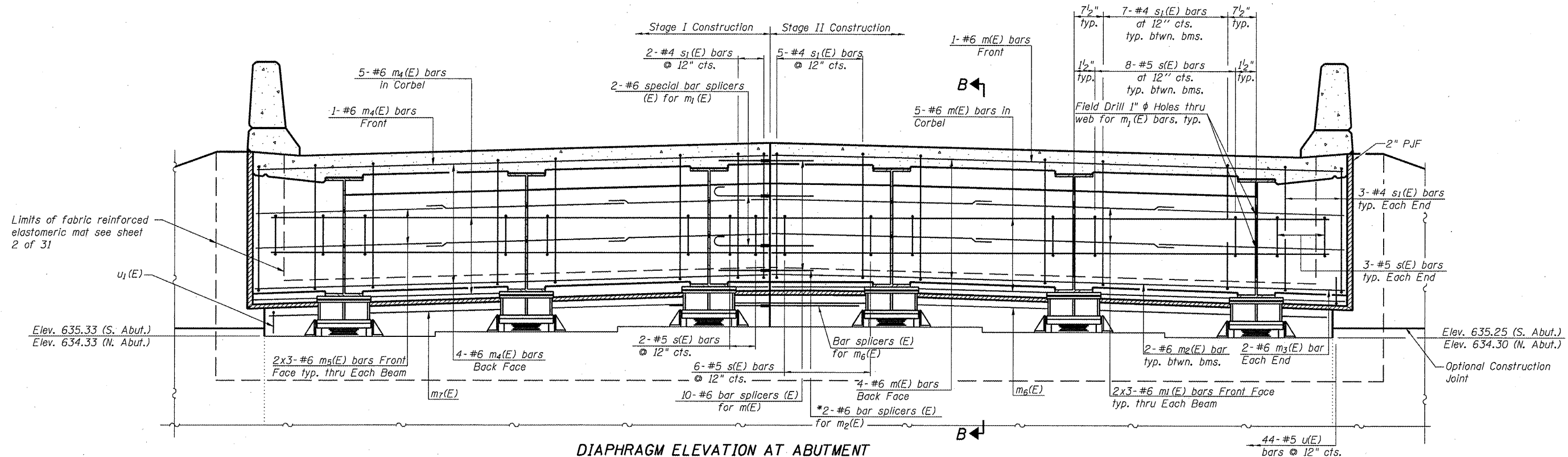


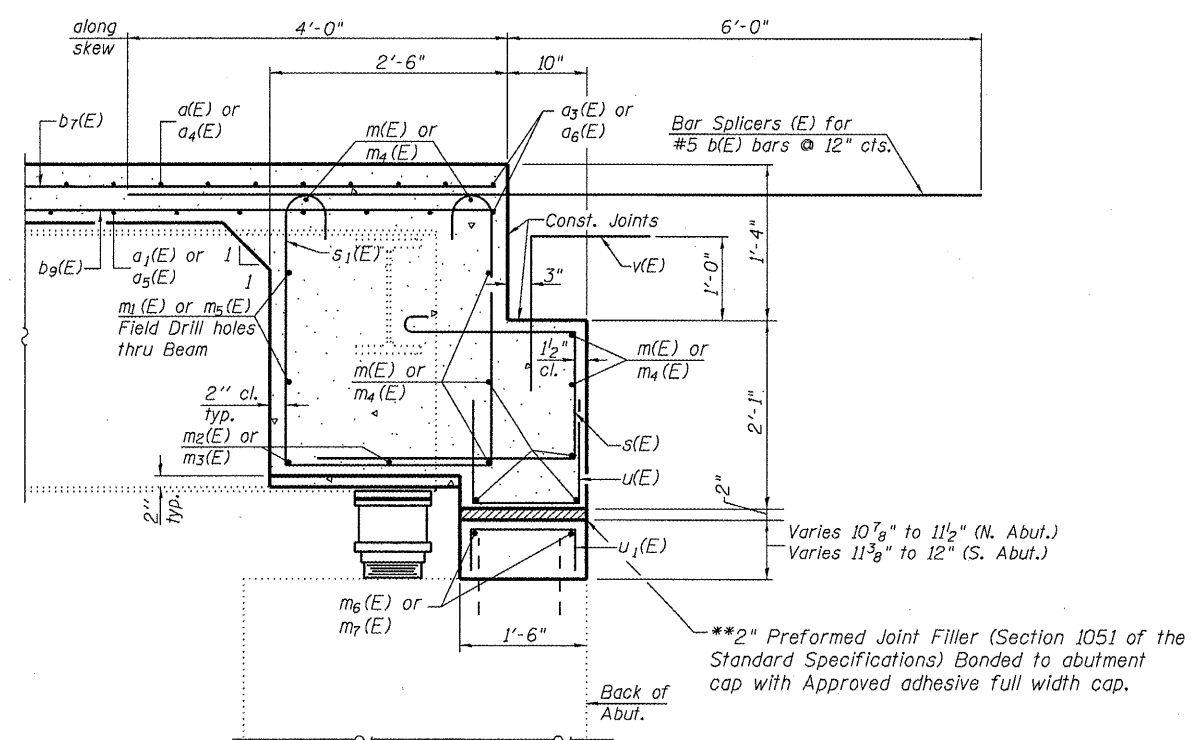
STATE OF ILLINOIS
DEPARTMENT OF TRANSPORTATION



DIAPHRAGM ELEVATION AT ABUTMENT
(Looking North at North Abutment)
(South Abutment Similar)

Notes:
Reinforcement bars in diaphragm are billed with superstructure on sheet 16 of 31.
Concrete in diaphragm is included with Concrete Superstructure on sheet 16 of 31.
For details of bars s(E), s₁(E), v(E), u(E) & u₁(E) see sheet 16 of 31.
For layout of m₆(E), m₇(E) & u₁(E) bars see sheet 29 of 31.
Concrete in back wall is included with Concrete Structures on sheet 16 of 31.
The s(E) and s₁(E) bars shall be placed parallel to the beams. Spacing for these bars shall be at right angles to the beams.
Cost of field drilling holes in webs for m₁(E) and m₅(E) bars is included in the cost of Reinforcement Bars (Epoxy coated).

MIN. BAR LAP
#6 bar = 3'-4" (Diaphragm)



SECTION B-B

Dimensions at right angles to abutment, except as shown.
REVISIED SHEET 4/20/11

**SEMI-INTEGRAL
DIAPHRAGM DETAILS
STRUCTURE NO. 059-0041 (N.B.)**

SHEET NO. 17 31 SHEETS	F.A.I. RTE.	SECTION	COUNTY	TOTAL SHEETS	SHEET NO.
	55	(59, 68)RS-3, BR	Macoupin	137	123
			CONTRACT NO. 72921		
FED. ROAD DIST. NO. 6 ILLINOIS FED. AID PROJECT					