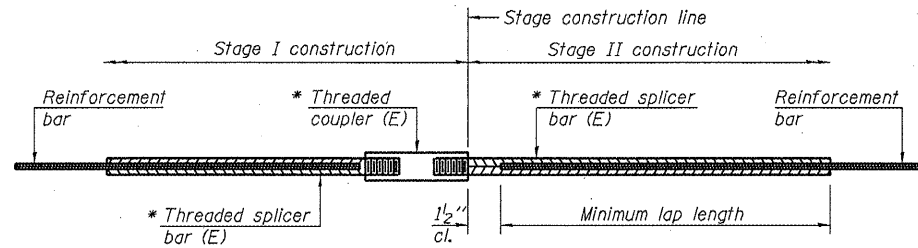


STATE OF ILLINOIS  
DEPARTMENT OF TRANSPORTATION



**STANDARD BAR SPLICER ASSEMBLY**

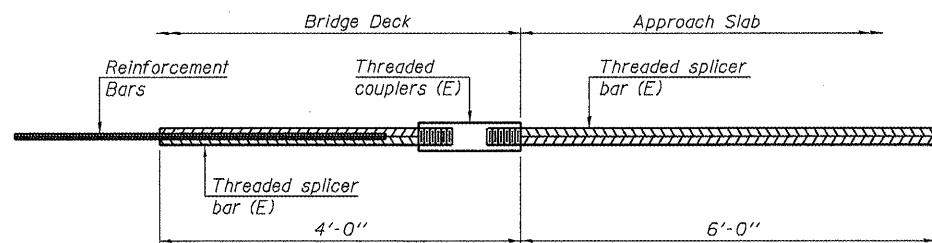
Minimum Lap Lengths					
Bar size to be spliced	Table 1	Table 2	Table 3	Table 4	Table 5
3, 4	1'-5"	1'-11"	2'-1"	2'-4"	2'-3"
5	1'-9"	2'-5"	2'-7"	2'-11"	2'-10"
6	2'-1"	2'-11"	3'-1"	3'-6"	3'-4"
7	2'-9"	3'-10"	4'-2"	4'-8"	4'-6"
8	3'-8"	5'-1"	5'-5"	6'-2"	5'-10"
9	4'-7"	6'-5"	6'-10"	7'-9"	7'-5"

- Table 1: Black bar, 0.8 Class C
- Table 2: Black bar, Top bar lap, 0.8 Class C
- Table 3: Epoxy bar, 0.8 Class C
- Table 4: Epoxy bar, Top bar lap, 0.8 Class C
- Table 5: Epoxy bar, Top bar lap, Class B

Threaded splicer bar length = min. lap length + 1/2" + thread length

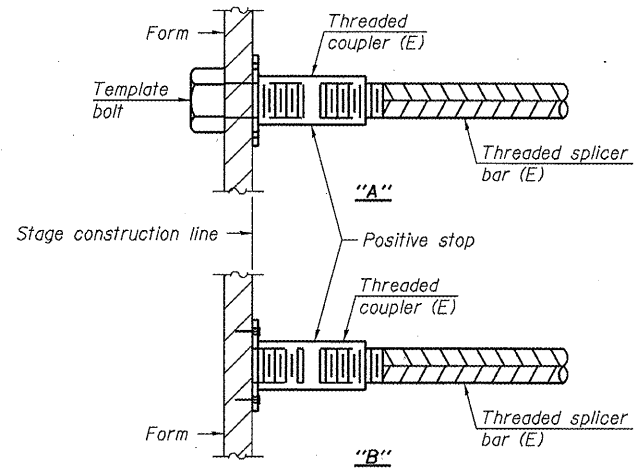
\*Epoxy not required on Bar Splicer Assembly components used in conjunction with black bars.

Location	Structure Number	Bar size	No. assemblies required	Table for minimum lap length
Deck, Top	059-0040	#5	227	4
Deck, Bottom	059-0040	#5	177	3
Approach, Top	059-0040	#4	50	4
Approach, Bottom	059-0040	#5	92	3
Appr. Footing	059-0040	#5	80	3
Abutment	059-0040	#6	24	3
Abut. Backwall	059-0040	#5	4	3
Deck, Top	059-0041	#5	200	4
Deck, Bottom	059-0041	#5	156	3
Approach, Top	059-0041	#4	50	4
Approach, Bottom	059-0041	#5	92	3
Appr. Footing	059-0041	#5	80	3
Abutment	059-0041	#6	24	3
Abut. Backwall	059-0041	#5	4	3



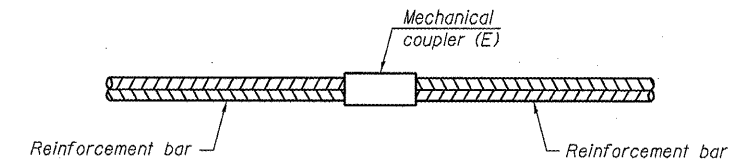
**BAR SPLICER ASSEMBLY FOR #5 BAR ON INTEGRAL OR SEMI-INTEGRAL ABUTMENTS**

059-0040	No. required = 88
059-0041	No. required = 88



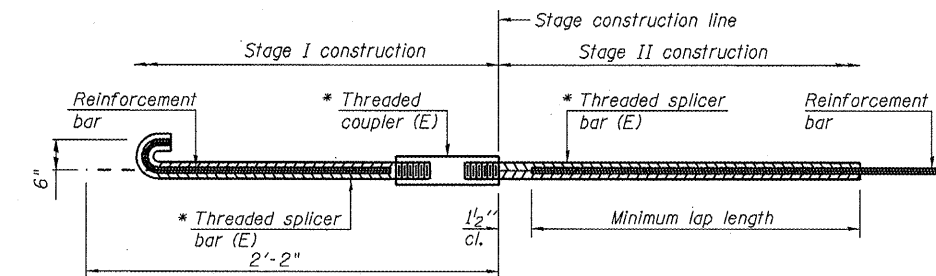
**INSTALLATION AND SETTING METHODS**

"A": Set bar splicer assembly by means of a template bolt.  
 "B": Set bar splicer assembly by nailing to wood forms or cementing to steel forms.  
 (E) : Indicates epoxy coating.



**STANDARD MECHANICAL SPLICER**

Location	Bar size	No. assemblies required

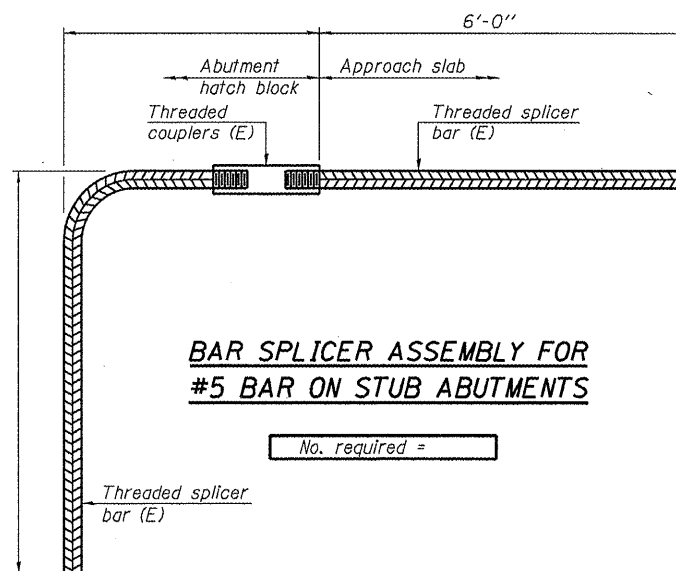


**SPECIAL BAR SPLICER ASSEMBLY**

Location	Structure Number	Bar size	No. assemblies required	Min. Lap Length
Diaphragm	059-0040	#6	4	3
Diaphragm	059-0041	#6	4	3

**NOTES**

Splicer bars shall be deformed with threaded ends and have a minimum 60 ksi yield strength.  
 All reinforcement shall be lapped and tied to the splicer bars.  
 Bar splicer assemblies shall be epoxy coated according to the requirements for reinforcement bars. See Section 508 of the Standard Specifications.  
 See special provision for Mechanical Splicers.  
 See approved list of bar splicer assemblies and mechanical splicers for alternatives.



**BAR SPLICER ASSEMBLY FOR #5 BAR ON STUB ABUTMENTS**

No. required =

**BAR SPLICER ASSEMBLY AND MECHANICAL SPLICER DETAILS  
STRUCTURE NO. 059-0040 (S.B.)  
STRUCTURE NO. 059-0041 (N.B.)**

SHEET NO. 30	F.A.I. RTE.	SECTION	COUNTY	TOTAL SHEETS	SHEET NO.
	55	(59, 68)RS-3, BR	Macoupin	137	136
31 SHEETS	CONTRACT NO. 72921				
FED. ROAD DIST. NO. 6 ILLINOIS FED. AID PROJECT					

REVISOR'S MARK: **REVISOR'S MARK** 4/20/11