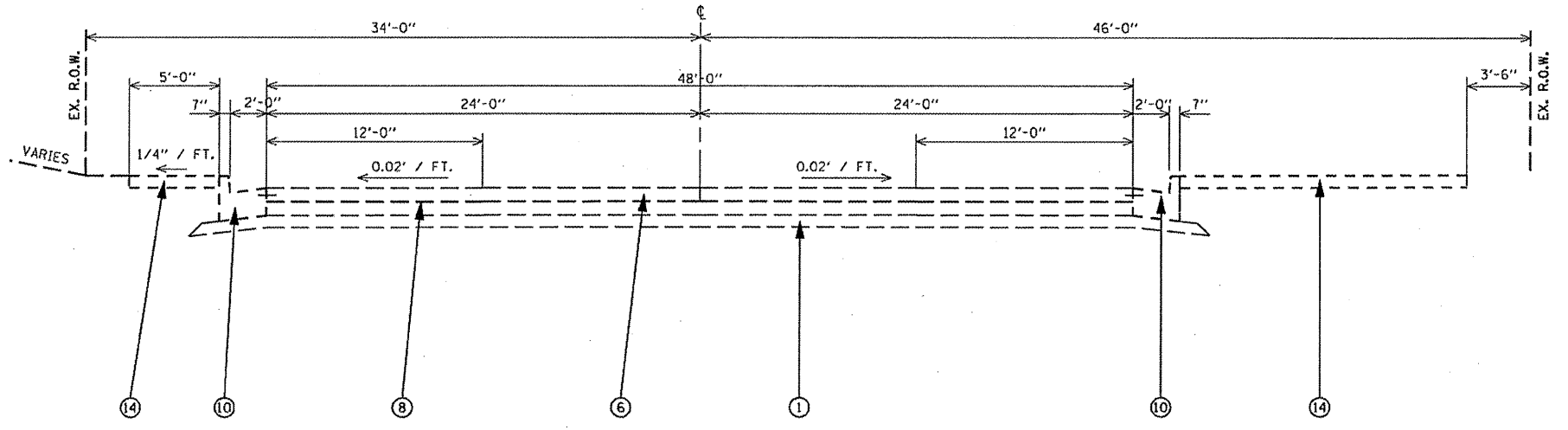


TYPICAL SECTION #3  
STA. 43+80 TO STA. 56+00



TYPICAL SECTION #4  
STA. 56+00 TO STA. 71+50

LEGEND

- ① EX. GRANULAR SUBBASE, TYPE A, 4"
- ② EX. STABILIZED SUBBASE, 4"
- ③ EX. HMA SHOULDER 8"
- ④ EX. HMA SHOULDER, 10"
- ⑤ EX C.R.P.C.C. PAVEMENT, 8"
- ⑥ EX. P.C.C. PAVEMENT, 9"
- ⑦ EX. P.C.C. PAVEMENT, 10"
- ⑧ EX. PAVEMENT FABRIC
- ⑨ EX. CONCRETE MEDIAN
- ⑩ EX. CC&G, TYPE B-6.24
- ⑪ EX. CC&G, TYPE M-6.12
- ⑫ EX. CC&G, TYPE M. 6.06
- ⑬ EX. CC&G, TYPE M. 4.18
- ⑭ EX. P.C.C SIDEWALK, 4"
- ⑮ EX. AGG. SHOULDER, TYPE B
- ⑯ EX. SUBGRADE REPLACEMENT, 3"
- ⑰ EX. LIME MODIFIED SUBGRADE, 12"
- ⑱ EX. TOPSOIL, 4"
- ⑲ EX. SUBSURFACE DRAIN

• (1072)-3, (SI)-5, (II)-3

FILE NAME *	USER NAME = hermandg	DESIGNED -	REVISED -	<b>STATE OF ILLINOIS DEPARTMENT OF TRANSPORTATION</b>	<b>TYPICAL SECTIONS</b>			F.A.P. RTE.	SECTION	COUNTY	TOTAL SHEETS	SHEET NO.	
cd:\work\pwt\dott\hermandg\1d2255692\06220798-shs-typical.dgn		DRAWN -	REVISED -		SCALE: NA	SHEET NO. 2 OF 4 SHEETS	STA.	TO STA.	67	.	SANGAMON	20	5
		CHECKED -	REVISED -										
		DATE -	REVISED -										
	PLOT DATE = Feb-28-2011 07:49:35AM												
											CONTRACT NO. 72D90		
											ILLINOIS FED. AID PROJECT		