

F.A.P. RTE.	SECTION	COUNTY	TOTAL SHEETS	SHEET NO.
562	(117) RS-7,1	MASON	8	1
FED. ROAD DIST. NO.	ILLINOIS	CONTRACT NO. 72D98		

STATE OF ILLINOIS  
DEPARTMENT OF TRANSPORTATION  
DIVISION OF HIGHWAYS

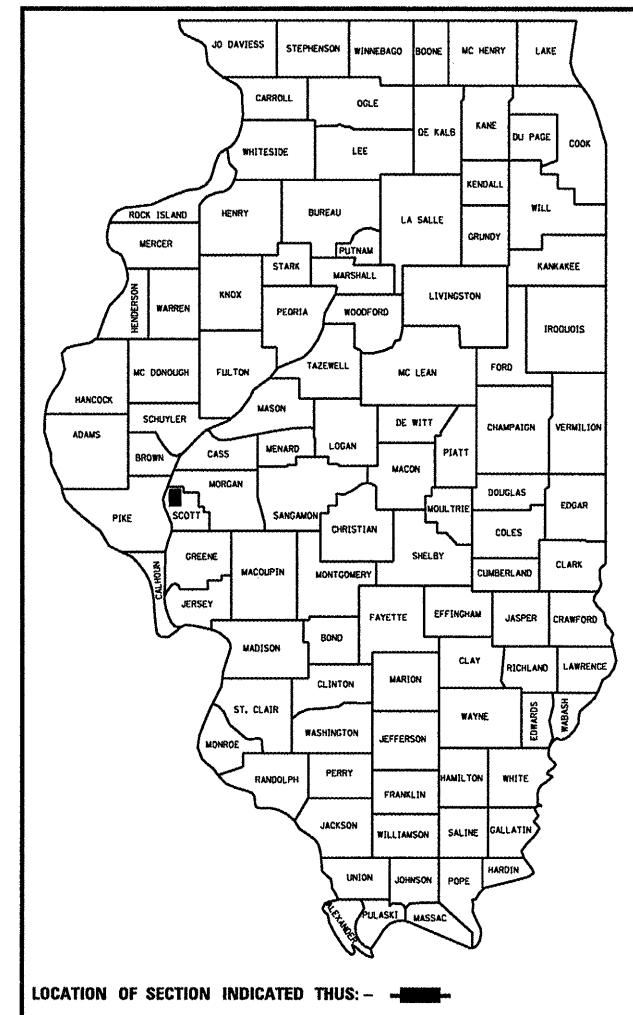
**PROPOSED  
CONTRACT MAINTENANCE**

FAP 562 (IL 100)  
SECTION (117) RS-7,1

SCOTT COUNTY

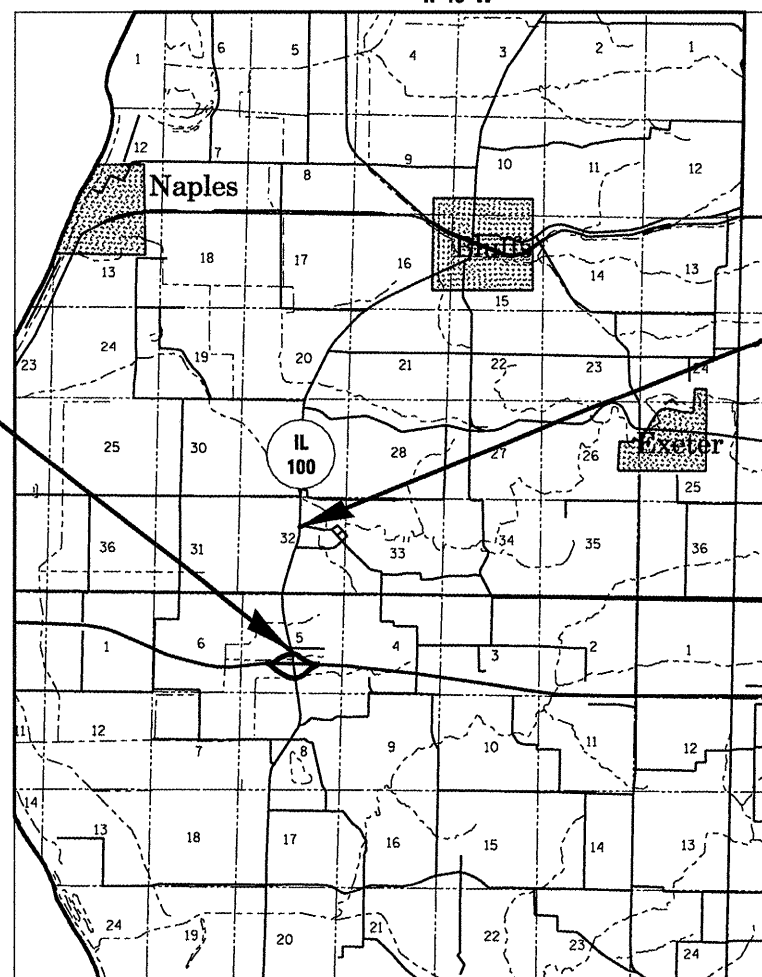
FOR INDEX OF SHEETS, SEE SHEET NO. 2

D-96-017-11



C-96-017-11

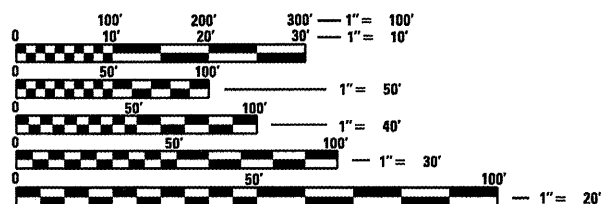
R 13 W



BEGIN PROJECT  
STA. 462 + 68

END PROJECT  
STA. 524 + 88

A.D.T. = 3,450 (375)



FULL SIZE PLANS HAVE BEEN PREPARED USING STANDARD ENGINEERING SCALES. REDUCED SIZED PLANS WILL NOT CONFORM TO STANDARD SCALES. IN MAKING MEASUREMENTS ON REDUCED PLANS, THE ABOVE SCALES MAY BE USED.

J.U.L.I.E.  
JOINT UTILITY LOCATION INFORMATION FOR EXCAVATION  
1-800-892-0123  
OR 811

PLAN AND CONTRACT TECHNICIAN  
TIMOTHY SHARP (217)782-7743

CONTRACT NO. 72D98

GROSS LENGTH = 6,220.00 FT. = 1.178 MILES

STATE OF ILLINOIS  
DEPARTMENT OF TRANSPORTATION  
DIVISION OF HIGHWAYS

SUBMITTED FEBRUARY 14 20 11  
Regan Z. Dinkell  
DEPUTY DIRECTOR OF HIGHWAYS, REGION ENGINEER  
March 25 20 11  
Scott E. Stitt P.E.  
ENGINEER OF DESIGN AND ENVIRONMENT  
March 25 20 11  
Christine M. Reed  
DIRECTOR OF HIGHWAYS, CHIEF ENGINEER

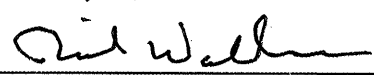
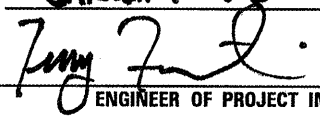
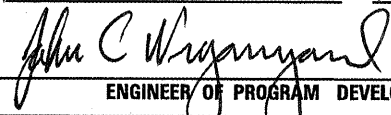
PRINTED BY THE AUTHORITY  
OF THE STATE OF ILLINOIS

**INDEX**

- 1 COVER
- 2 INDEX/STANDARDS/SIGNATURES
- 3-4 QUANTITIES
- 5 LOCATION MAP
- 6 TYPICAL SECTIONS
- 7 SCHEDULES
- 8 BUTT JOINT DETAILS

**STANDARDS**

- 701001-02
- 701006-03
- 701201-04
- 701301-04
- 701306-03
- 701311-03
- 701901-01
- 780001-02
- 781001-03

<b>STATE OF ILLINOIS DEPARTMENT OF TRANSPORTATION DIVISION OF HIGHWAYS DISTRICT 6</b>	
EXAMINED	2/7 20 11
 ENGINEER OF OPERATIONS	
EXAMINED	JANUARY 25 20 11
 ENGINEER OF PROJECT IMPLEMENTATION	
EXAMINED	JANUARY 27 20 11
 ENGINEER OF PROGRAM DEVELOPMENT	

INDEX/STANDARDS/SIGNATURES  
FAP 562 (IL 100)  
SECTION (117) RS-7,I  
SCOTT COUNTY

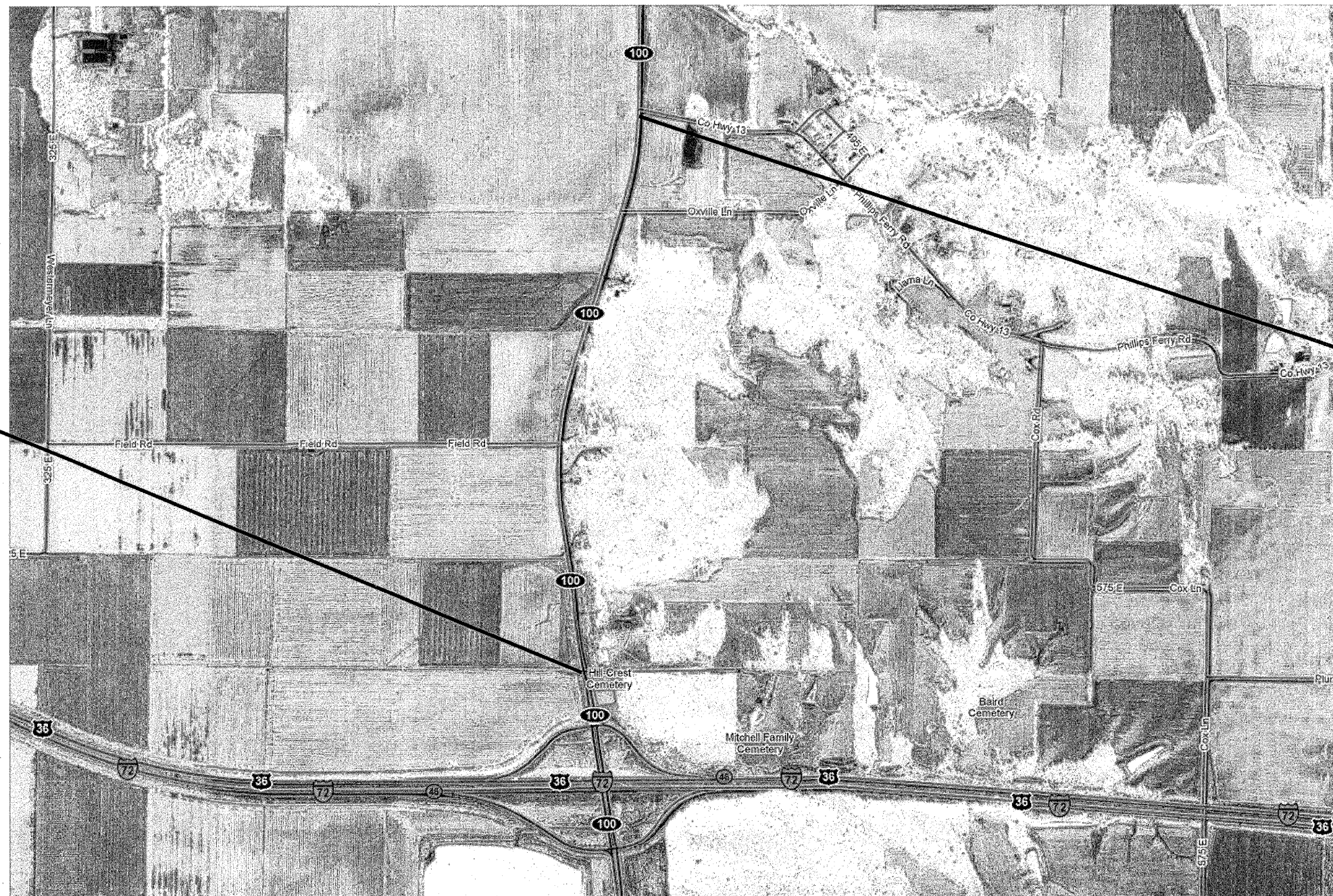
S U M M A R Y O F Q U A N T I T I E S

CODE NO.	ITEM	UNIT	100% STATE
			0005
			TOTAL QTY
40600200	BITUMINOUS MATERIALS (PRIME COAT)	TON	6.8
40600300	AGGREGATE (PRIME COAT)	TON	35.5
40600895	CONSTRUCTING TEST STRIP	EACH	1
40600990	TEMPORARY RAMP	SQ YD	31
40603315	HOT-MIX ASPHALT SURFACE COURSE, MIX "C", N70	TON	1,490
44000155	HOT-MIX ASPHALT SURFACE REMOVAL, 1 1/2"	SQ YD	17,735
44200144	PAVEMENT PATCHING, TYPE II, 12 INCH	SQ YD	160
44200148	PAVEMENT PATCHING, TYPE III, 12 INCH	SQ YD	50
48101200	AGGREGATE SHOULDERS, TYPE B	TON	237
67100100	MOBILIZATION	L SUM	1
70100450	TRAFFIC CONTROL AND PROTECTION, STANDARD 701201	L SUM	1
70100460	TRAFFIC CONTROL AND PROTECTION, STANDARD 701306	L SUM	1

QUANTITIES  
FAP 562 (IL 100)  
SECTION (117) RS-7,I  
SCOTT COUNTY



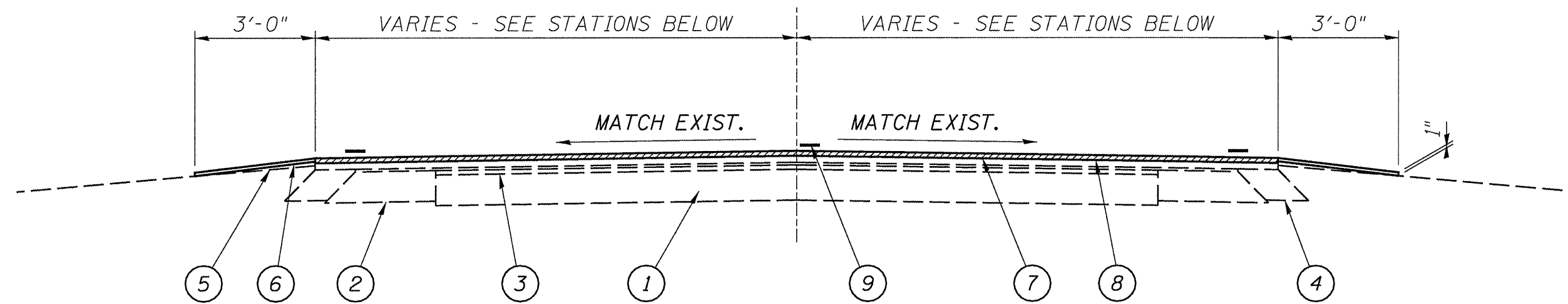
BEGIN PROJECT  
STA. 462+68



END PROJECT  
STA. 524+88

LOCATION MAP  
FAP 562 (IL 100)  
SECTION (117) RS-7,I  
SCOTT COUNTY





STA. 462+68 TO 470+00 - 30'-0" WIDE  
 STA. 470+00 TO 471+80 - TAPERS FROM 30'-0" TO 24'-0" WIDE  
 STA. 471+80 TO 524+88 - 24'-0" WIDE

LEGEND

- 1 - EXIST. P.C.C. PAVEMENT
- 2 - EXIST. P.C.C. BASE COURSE WIDENING 9"
- 3 - EXIST. HOT-MIX ASPHALT SURFACE
- 4 - EXIST. HOT-MIX ASPHALT BASE COURSE WIDENING 9"
- 5 - EXIST. AGGREGATE SHOULDERS
- 6 - PROP. AGGREGATE SHOULDERS, TYPE B
- 7 - PROP. HOT-MIX ASPHALT SURFACE REMOVAL 1 1/2"
- 8 - PROP. HOT-MIX ASPHALT SURFACE COURSE, MIX C, N70 1 1/2"
- 9 - PROP. PAINT PAVEMENT MARKING - LINE 5"

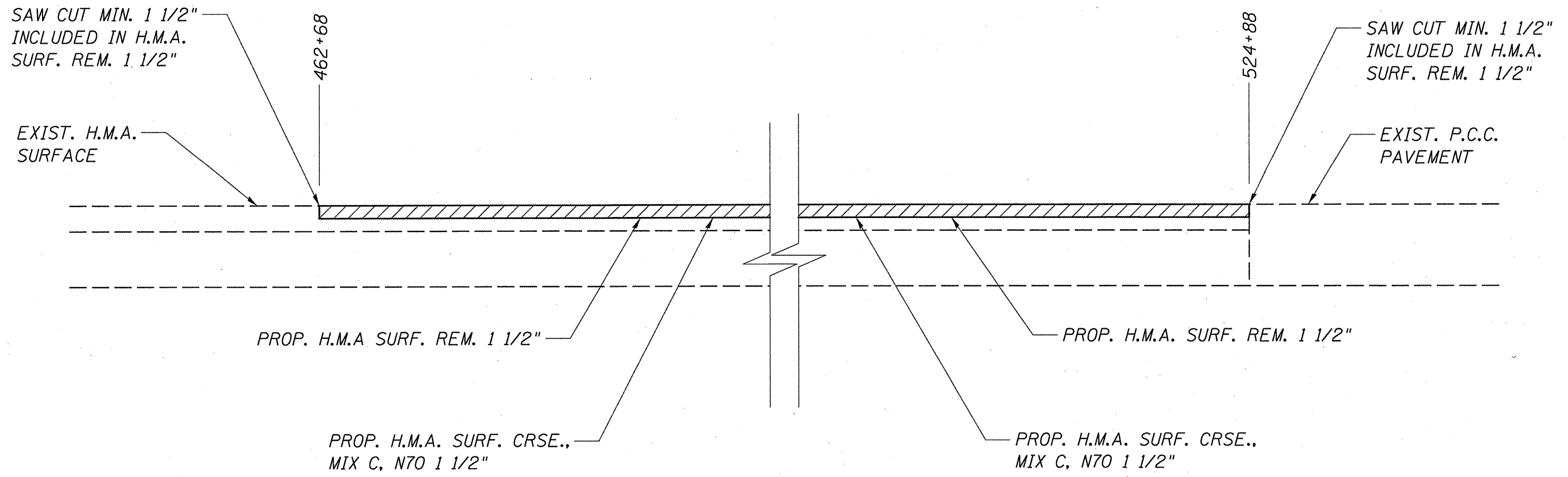
TYPICALS  
 FAP 562 (IL 100)  
 SECTION (117) RS-7,I  
 SCOTT COUNTY

PAVEMENT MARKING SCHEDULE			
STATION	TYPE	PAINT PVT MK LINE 5"	
		WHITE	YELLOW
LT & RT 573+00 TO 641+50	EDGE LINE	12,440 FT	
RT 462+68 TO 468+00	SKIP DASH		130 FT
LT 462+68 TO 468+00	NO PASS		532 FT
468+00 TO 494+40	SKIP DASH		660 FT
LT 494+40 TO 511+10	SKIP DASH		420 FT
RT 494+40 TO 511+10	NO PASS		1,670 FT
STA. 511+10 TO 524+88	SKIP DASH		345 FT
<hr/>			
<hr/>			
TOTALS		12,440 FT	3,757 FT

MIXTURE REQUIREMENTS		
THE FOLLOWING MIXTURE REQUIREMENTS ARE APPLICABLE FOR THIS PROJECT		
MIXTURE USE(S):	H.M.A. S.C., MIX C, N70	H.M.A. PATCHING
AC/PG	PG 64-22	PG 64-22
DESIGN AIR VOIDS:	4.0% @ N DESIGN = 70	4.0% @ N DESIGN = 70
MIXTURE COMP:	IL 9.5 OR 12.5	IL 19.0
FRICTION AGG:	MIX "C"	N/A

NOTES:  
STATIONS ARE APPROXIMATE.

SCHEDULES  
FAP 562 (IL 100)  
SECTION (117) RS-7,I  
SCOTT COUNTY



BUTT JOINT  
FAP 562 (IL 100)  
SECTION (117) RS-7,I  
SCOTT COUNTY