

F.A.P. RTE.	SECTION	COUNTY	TOTAL SHEETS	SHEET NO.
322	(26-2)RS-2	Fayette	11	1
		ILLINOIS	CONTRACT NO. 74459	

STATE OF ILLINOIS
DEPARTMENT OF TRANSPORTATION
DIVISION OF HIGHWAYS

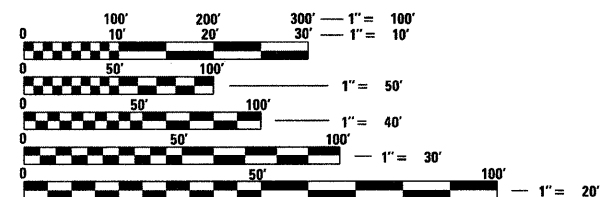
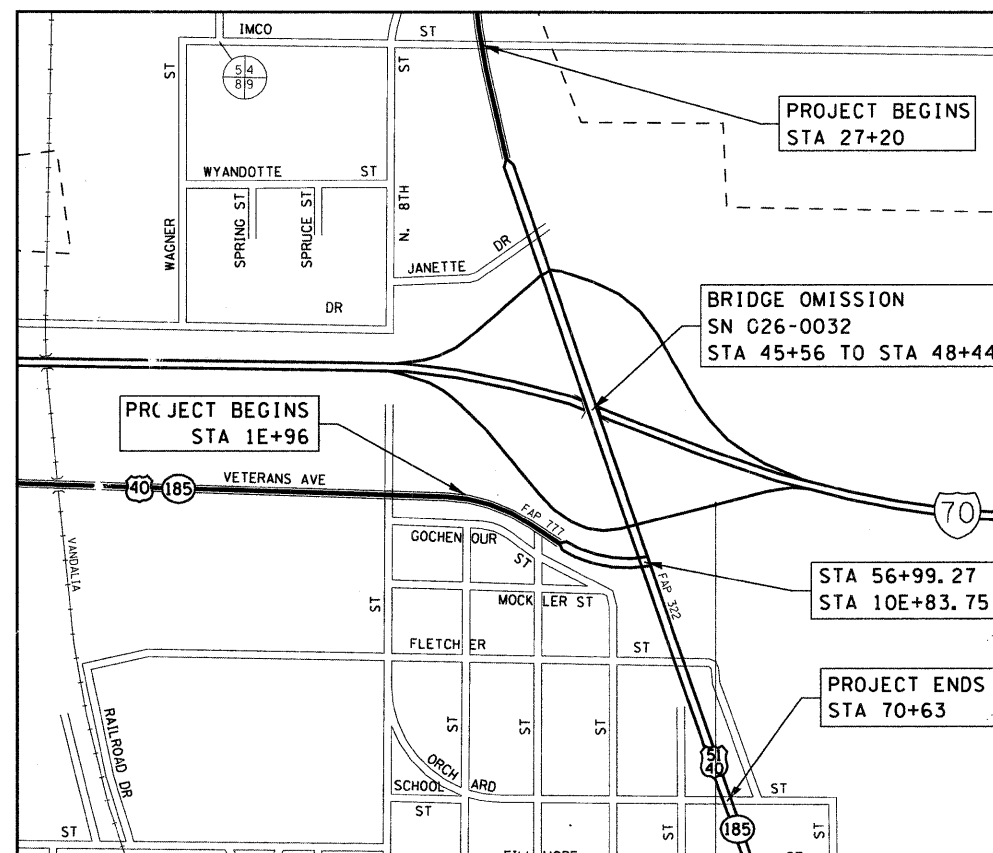
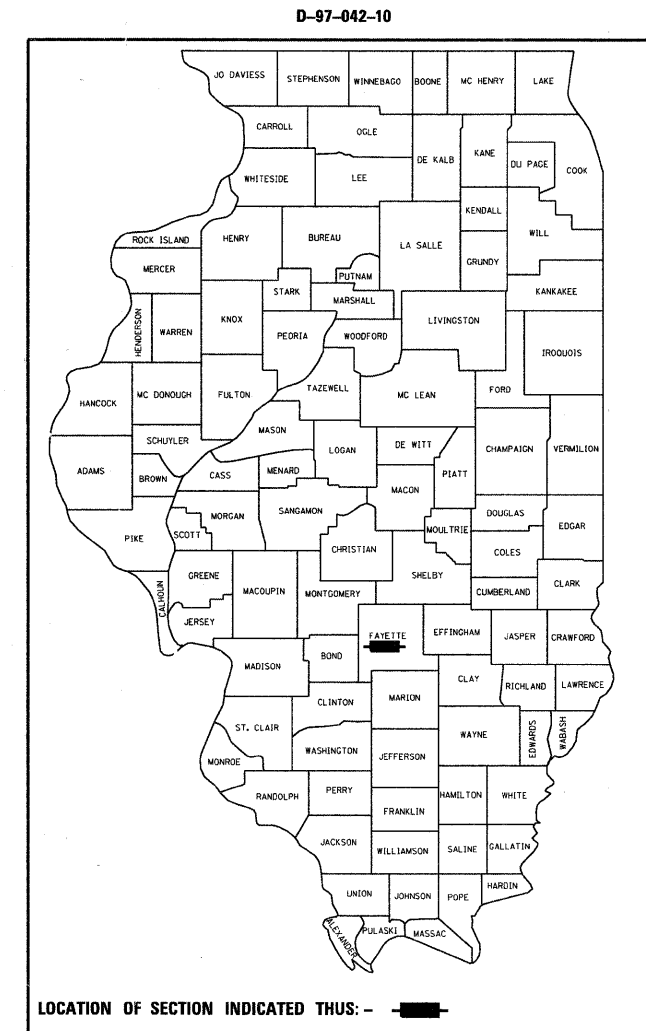
PROPOSED HIGHWAY PLANS

FAP ROUTE 322 (US 51)
SECTION (26-2)RS-2
PROJECT ACF-0322(094)
BITUMINOUS RESURFACING
FAYETTE COUNTY

C-97-010-10

FOR INDEX OF SHEETS, SEE SHEET NO. 2

ADT (2009) = 7,000



FULL SIZE PLANS HAVE BEEN PREPARED USING STANDARD ENGINEERING SCALES. REDUCED SIZED PLANS WILL NOT CONFORM TO STANDARD SCALES. IN MAKING MEASUREMENTS ON REDUCED PLANS, THE ABOVE SCALES MAY BE USED.

J.U.L.I.E.
JOINT UTILITY LOCATION INFORMATION FOR EXCAVATION
1-800-892-0123
OR 811

PROJECT ENGINEER: MARK DAUGHERTY
PROJECT MANAGER: BRIAN BIERMAN

CONTRACT NO. 74459

GROSS LENGTH = 5,231 FT. = 0.99 MILE
NET LENGTH = 4,943 FT. = 0.94 MILE

STATE OF ILLINOIS
DEPARTMENT OF TRANSPORTATION
DIVISION OF HIGHWAYS

SUBMITTED Feb 10 2011
Gregory J. Dunkel
DEPUTY DIRECTOR OF HIGHWAYS, REGION ENGINEER

March 05 2011
Scott E. Stitt, P.E.
ENGINEER OF DESIGN AND ENVIRONMENT

March 05 2011
Christine M. Reed
DIRECTOR OF HIGHWAYS, CHIEF ENGINEER

PRINTED BY THE AUTHORITY
OF THE STATE OF ILLINOIS

GENERAL NOTES

THE CONTRACTOR SHALL PROVIDE INTERNET ACCESS TO THE BITUMINOUS PLANT QUALITY CONTROL LAB SO THAT BITUMINOUS PLANT REPORTS CAN BE E-MAILED TO THE DISTRICT HEADQUARTERS. THIS WORK WILL NOT BE PAID FOR SEPARATELY BUT SHALL BE INCLUDED IN THE UNIT PRICES FOR OTHER ITEMS IN THE CONTRACT.

ANY BITUMINOUS MATERIAL (PRIME COAT) THE CONTRACTOR USES SHALL BE EITHER RC-70, SS-1H, OR SS-1HP APPLIED AT THE RATE DIRECTED BY THE ENGINEER. THE COST OF THIS MATERIAL SHALL BE INCLUDED IN THE COST OF THE ASSOCIATED HOT-MIX ASPHALT PAY ITEM.

EXISTING AGGREGATE SHOULDER WITHIN THE LIMITS OF HMA INLAY SECTIONS SHALL BE REMOVED AS NEEDED FOR PLACEMENT OF HMA RESURFACING AND REPLACED WITH AGGREGATE SHOULDERS, TYPE B AS DIRECTED BY THE ENGINEER. THE REMOVAL WILL NOT BE PAID FOR SEPARATELY BUT SHALL BE INCLUDED IN THE COST OF THE CONTRACT.

1,676 FEET OF DETECTOR LOOP, TYPE I HAS BEEN INCLUDED IN THE PLANS TO REPLACE ANY EXISTING DETECTOR LOOPS DAMAGED DURING THE MILLING PROCESS. DETECTOR LOOPS SHALL BE REPLACED IN THE SAME LOCATION AND CONFIGURATION.

THE COST OF REMOVAL OF THE TEMPORARY RAMP SHALL BE INCLUDED IN THE UNIT PRICE FOR TEMPORARY RAMP.

THE TOTAL QUANTITY OF THERMOPLASTIC PAVEMENT MARKING - LINE 4" CONSISTS OF 8,297 FEET OF YELLOW AND 10,082 FEET OF WHITE.

THE TOTAL QUANTITY OF THERMOPLASTIC PAVEMENT MARKING - LINE 6" CONSISTS OF 621 FEET OF WHITE.

THE TOTAL QUANTITY OF THERMOPLASTIC PAVEMENT MARKING - LINE 24" CONSISTS OF 217 FEET OF WHITE.

THE TOTAL QUANTITY OF THERMOPLASTIC PAVEMENT MARKING - LETTERS AND SYMBOLS CONSISTS OF 195 SQ FT OF WHITE.

THE TOTAL QUANTITY OF RAISED REFLECTIVE PAVEMENT MARKERS CONSISTS OF 14 TWO-WAY AMBER AND 108 ONE-WAY CRYSTAL.

THE ACTUAL LOCATIONS OF PAVEMENT PATCHING AND FINAL QUANTITIES SHALL BE DETERMINED BY THE ENGINEER IN THE FIELD.

THE MATERIAL USED FOR AGGREGATE SHOULDERS, TYPE B SHALL BE CRUSHED STONE, CRUSHED CONCRETE, OR RAP.

SHORT-TERM PAVEMENT MARKING ON THE MILLED SURFACE SHALL BE PAINT. ALL OTHER SHORT-TERM PAVEMENT MARKINGS SHALL BE TAPE.

THE LOCATIONS AND/OR DEPTHS OF UNDERGROUND UTILITIES SHOWN HAVE BEEN TAKEN FROM INFORMATION FURNISHED BY THE UTILITY OWNERS AND MUST BE CONSIDERED APPROXIMATE. FIELD MARKINGS OF FACILITIES IN CRITICAL AREAS MAY BE OBTAINED BY PROVIDING A MINIMUM OF 96 HOURS ADVANCE NOTICE THROUGH THE J.U.L.I.E. SYSTEM BY CALLING 800-892-0123.

QUANTITIES OF BITUMINOUS CONCRETE SURFACE COURSE WERE CALCULATED USING THE FACTOR 2.016 TON/CU YD. THE FOLLOWING MIXTURE REQUIREMENTS ARE APPLICABLE TO THIS PROJECT:

MIXTURE USE(S):	POLY. HMA SURF. CSE., MIX "D" N90	MIXTURE USE(S):	LEVELING BINDER (MACHINE METHOD) N90
AC/PG:	SBS PG 70-22	AC/PG:	PG 64-22
DESIGN AIR VOIDS:	4.0% @ NDESIGN = 90	DESIGN AIR VOIDS:	4.0% @ NDESIGN = 90
MIXTURE COMPOSITION:		MIXTURE COMPOSITION:	
(GRADATION MIXTURE)	IL-9.5	(GRADATION MIXTURE)	IL-9.5
FRICTION AGGREGATE:	MIXTURE D	FRICTION AGGREGATE:	N/A

MIXTURE USE(S): CLASS D PATCHING:
 HMA BINDER CSE., IL-19.0, N70
 AC/PG: PG 64-22
 DESIGN AIR VOIDS: 4.0% @ NDESIGN = 70
 MIXTURE COMPOSITION:
 (GRADATION MIXTURE) IL-19.0
 FRICTION AGGREGATE: N/A

INDEX OF SHEETS

SHEET NO	TITLE
1	COVER SHEET
2	GENERAL NOTES, INDEX OF SHEETS, LIST OF STANDARDS
3	SUMMARY OF QUANTITIES
4	LOCATION MAP
5	TYPICAL SECTIONS
6-7	SCHEDULES
8-11	PAVEMENT MARKING DETAILS

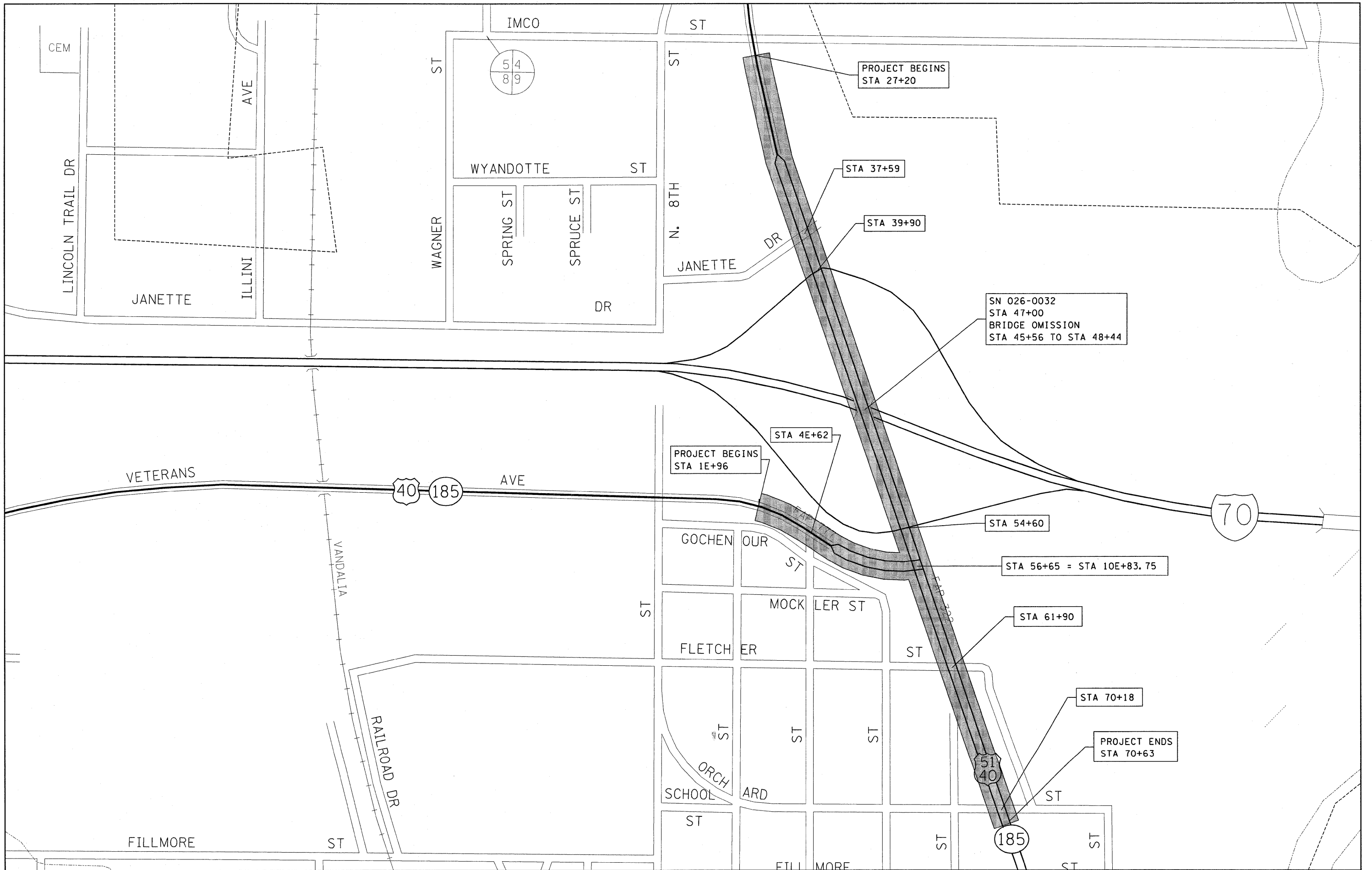
THE FOLLOWING STANDARDS ARE A PART OF THESE PLANS AND ARE INCLUDED FOLLOWING THE LAST NUMBERED SHEET OF THE PLANS.

STD. NO.	DESCRIPTION
000001-06	STANDARD SYMBOLS, ABBREVIATIONS AND PATTERNS
001006	DECIMAL OF AN INCH AND OF A FOOT
442201-03	CLASS C AND D PATCHES
667101-01	PERMANENT SURVEY MARKERS
701006-03	OFF-RD OPERATIONS, 2L, 2W, 15' TO 24" FROM PAVEMENT EDGE
701101-02	OFF-RD OPERATIONS, MULTILANE, 15' TO 24" FROM PAVEMENT EDGE
701306-03	LANE CLOSURE, 2L, 2W, SLOW MOVING OPERATIONS DAY ONLY, FOR SPEEDS >= 45 MPH
701426-04	LANE CLOSURE, MULTILANE, INTERMITTENT OR MOVING OPER., FOR SPEEDS >= 45 MPH
701601-07	URBAN LANE CLOSURE, MULTILANE, 1W OR 2W WITH NONTRAVERSABLE MEDIAN
701701-07	URBAN LANE CLOSURE, MULTILANE INTERSECTION
701901-01	TRAFFIC CONTROL DEVICES
780001-02	TYPICAL PAVEMENT MARKINGS
781001-03	TYPICAL APPLICATIONS RAISED REFLECTIVE PAVEMENT MARKERS
886001-01	DETECTOR LOOP INSTALLATIONS

FILE NAME *	USER NAME = #USER#	DESIGNED -	REVISED -	STATE OF ILLINOIS DEPARTMENT OF TRANSPORTATION	GENERAL NOTES & INDEX OF SHEETS				F.A.P. RTE.	SECTION	COUNTY	TOTAL SHEETS	SHEET NO.
#FILE#		DRAWN -	REVISED -		322	(26-2)RS-2	Fayette	11	2				
	PLOT SCALE = #SCALE#	CHECKED -	REVISED -		SCALE: SHEET NO. OF SHEETS STA. TO STA.				CONTRACT NO. 74459				
	PLOT DATE = #DATE#	DATE -	REVISED -		ILLINOIS FED. AID PROJECT								

SUMMARY OF QUANTITIES			TOTAL QUANTITIES	CONSTRUCTION TYPE CODE		
CODE NO	ITEM	UNIT		80% FEDERAL 20% STATE 0005 URBAN		
40600100	BITUMINOUS MATERIALS (PRIME COAT)	GALLON	5935	5935		
40600300	AGGREGATE (PRIME COAT)	TON	119	119		
40600645	LEVELING BINDER (MACHINE METHOD), N90	TON	1246	1246		
40600990	TEMPORARY RAMP	SQ YD	715	715		
40603545	POLYMERIZED HOT-MIX ASPHALT SURFACE COURSE, MIX "D", N90	TON	2493	2493		
44000158	HOT-MIX ASPHALT SURFACE REMOVAL, 2 1/4"	SQ YD	29673	29673		
44201803	CLASS D PATCHES, TYPE II, 13 INCH	SQ YD	98	98		
44201807	CLASS D PATCHES, TYPE III, 13 INCH	SQ YD	39	39		
44201811	CLASS D PATCHES, TYPE I, 14 INCH	SQ YD	12	12		
44201815	CLASS D PATCHES, TYPE II, 14 INCH	SQ YD	551	551		
44201819	CLASS D PATCHES, TYPE III, 14 INCH	SQ YD	188	188		
44201821	CLASS D PATCHES, TYPE IV, 14 INCH	SQ YD	153	153		
48101200	AGGREGATE SHOULDERS, TYPE B	TON	146	146		
66700205	PERMANENT SURVEY MARKERS, TYPE I	EACH	3	3		
67100100	MOBILIZATION	L SUM	1	1		
70100460	TRAFFIC CONTROL AND PROTECTION, STANDARD 701306	L SUM	1	1		
70102630	TRAFFIC CONTROL AND PROTECTION, STANDARD 701601	L SUM	1	1		
70102635	TRAFFIC CONTROL AND PROTECTION, STANDARD 701701	L SUM	1	1		
70300100	SHORT TERM PAVEMENT MARKING	FOOT	1155	1155		
70301000	WORK ZONE PAVEMENT MARKING REMOVAL	SQ FT	193	193		
*78000100	THERMOPLASTIC PAVEMENT MARKING LETTERS AND SYMBOLS	SQ FT	257	257		
*78000200	THERMOPLASTIC PAVEMENT MARKING - LINE 4"	FOOT	18379	18379		
*78000400	THERMOPLASTIC PAVEMENT MARKING - LINE 6"	FOOT	868	868		
*78000650	THERMOPLASTIC PAVEMENT MARKING - LINE 24"	FOOT	217	217		
*78100100	RAISED REFLECTIVE PAVEMENT MARKER	EACH	122	122		
*88600100	DETECTOR LOOP, TYPE I	FOOT	1676	1676		
X4060995	TEMPORARY RAMP, SPECIAL	SQ YD	512	512		
Z0012500	CONCRETE CURB REPAIR	FOOT	292	292		
*SPECIALTY ITEM						

FILE NAME =	USER NAME = #USER#	DESIGNED -	REVISED -	STATE OF ILLINOIS DEPARTMENT OF TRANSPORTATION	SUMMARY OF QUANTITIES	F.A.P. RTE.	SECTION	COUNTY	TOTAL SHEETS	SHEET NO.	
#FILE#		DRAWN -	REVISED -			322	(26-2)RS-2	Fayette	11	3	
PLOT SCALE = #SCALE#		CHECKED -	REVISED -			CONTRACT NO. 74459					
PLOT DATE = #DATE#		DATE -	REVISED -			SCALE:	SHEET NO. OF SHEETS	STA. TO STA.	ILLINOIS FED. AID PROJECT		

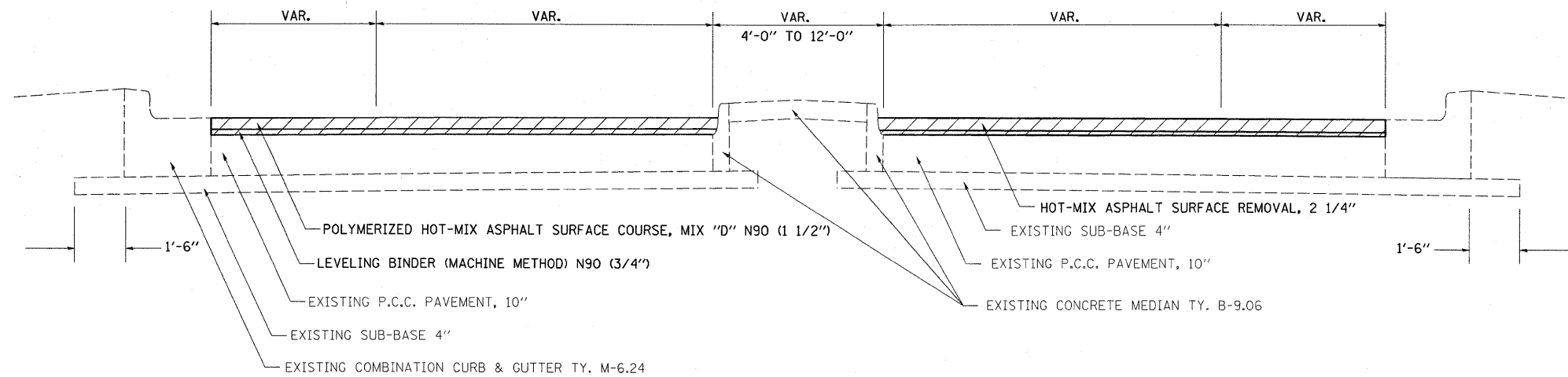


FILE NAME =	USER NAME = teasleyok	DESIGNED -	REVISED -
ci:\pw_work\pwidot\teasleyok\10186004\074459-shs-cover.dgn		DRAWN -	REVISED -
		CHECKED -	REVISED -
		DATE -	REVISED -

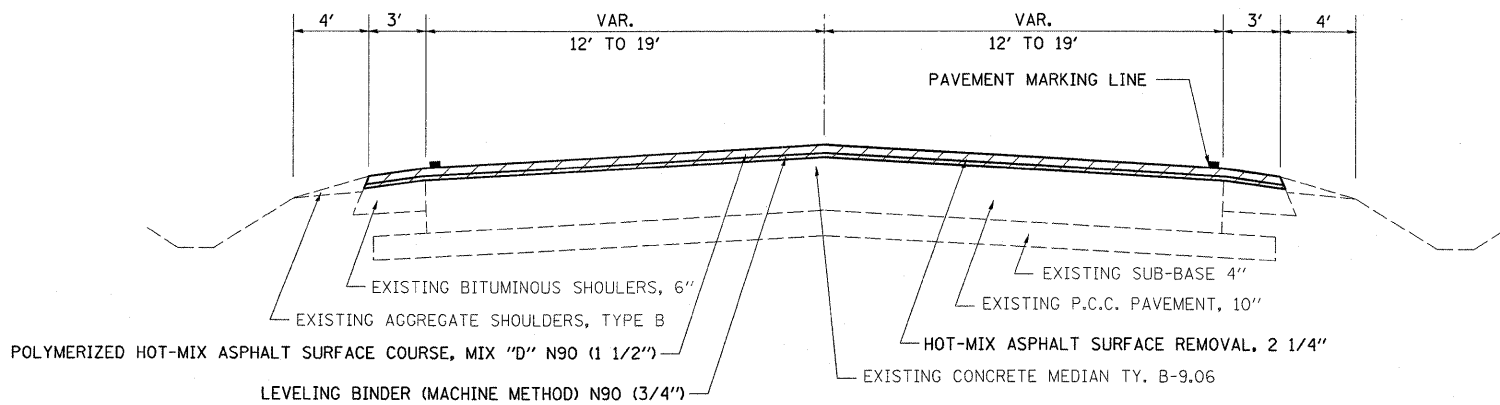
**STATE OF ILLINOIS
DEPARTMENT OF TRANSPORTATION**

LOCATION MAP			
SCALE:	SHEET NO.	OF SHEETS	STA. TO STA.

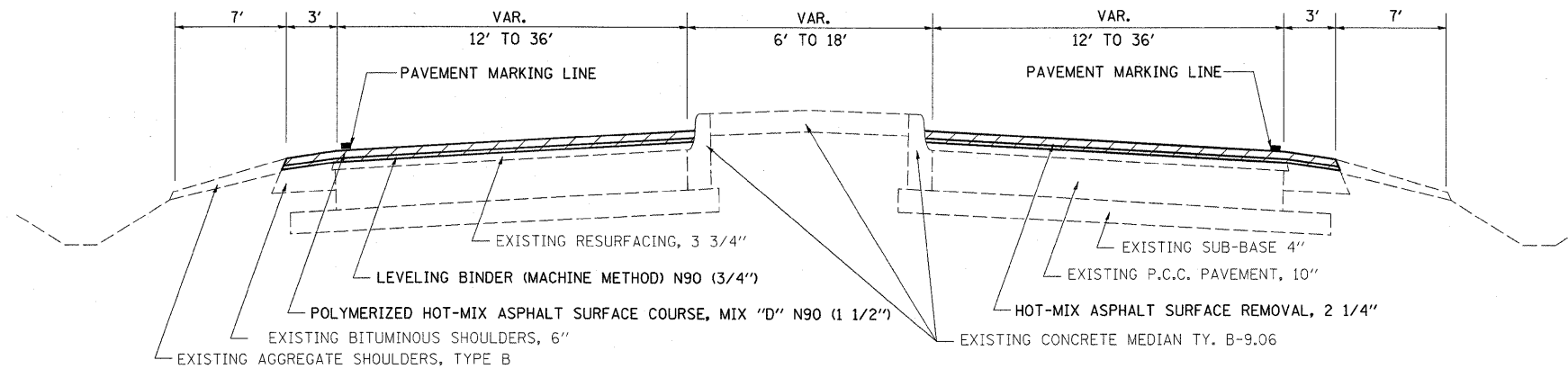
F.A.P. RTE. 322	SECTION (26-2)RS-2	COUNTY Fayette	TOTAL SHEETS 11	SHEET NO. 4
CONTRACT NO. 74459				
ILLINOIS FED. AID PROJECT				



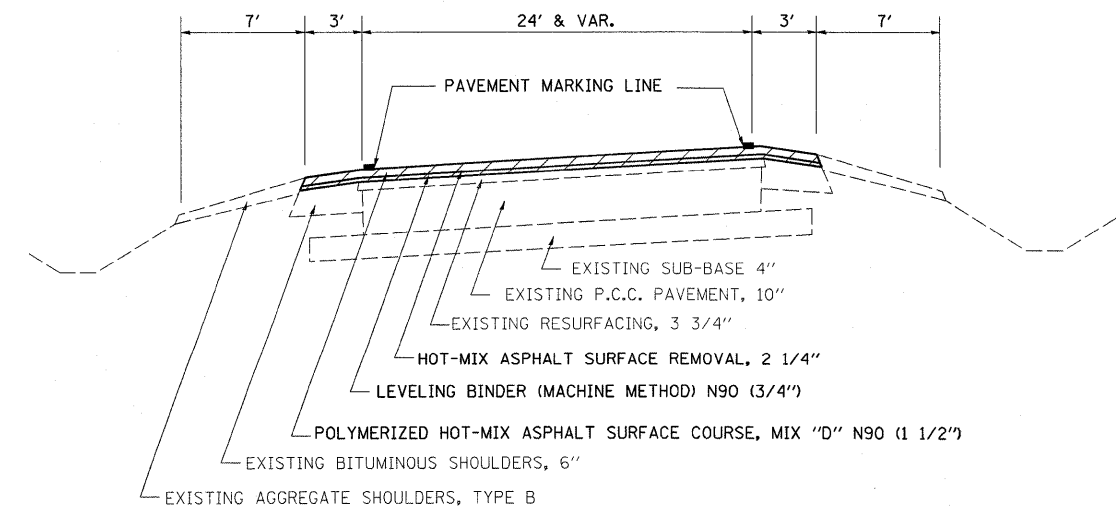
VETERANS AVE.
STA. 7E+25 TO STA 10E+48



VETERANS AVE.
STA. 1E+96 TO STA 7E+25



RTE 51
STA. 33+19 TO STA. 70+63



RTE 51
STA. 27+07 TO STA 33+19

FILE NAME =
c:\pw\work\p\dot\teeslejck\0186004\07

USER NAME = teeslejck
4459-shr-typicals.dgn
PLOT SCALE = 50.0000' / 1/4"
PLOT DATE = 2/10/2011

DESIGNED -
DRAWN -
CHECKED -
DATE -

REVISED -
REVISED -
REVISED -
REVISED -

**STATE OF ILLINOIS
DEPARTMENT OF TRANSPORTATION**

TYPICALS

SCALE: SHEET NO. OF SHEETS STA. TO STA.

F.A.P. RTE. 322	SECTION (26-2)RS-2	COUNTY Fayette	TOTAL SHEETS 11	SHEET NO. 5
CONTRACT NO. 74459				
ILLINOIS FED. AID PROJECT				

PAVEMENT SCHEDULE

STATION TO STATION			LANE	LENGTH	WIDTH	BITUMINOUS MATERIALS (PRIME COAT)	AGGREGATE (PRIME COAT)	TEMPORARY RAMP	TEMPORARY RAMP, SPECIAL	HOT-MIX ASPHALT SURFACE REMOVAL, 2 1/4"	POLYMERIZED HMA SURF. CSE. MIX "D" N90	LEVELING BINDER (MACHINE METHOD) N90	AGGREGATE SHOULDERS, TYPE B			
US 51			SB/NB	FEET	FEET	GAL	TON	SQ YD	SQ YD	SQ YD	TON	TON	TON			
27+20	TO	28+91	SB	171	15	57.0	1.1	20.8	-	285.0	23.9	12.0	2.7			
28+91	TO	33+19	SB	428	15-34	233.0	4.7	-	-	1165.1	97.9	48.9	6.6			
33+19	TO	34+21	SB	102	34-29	71.4	1.4	-	-	357.0	30.0	15.0	1.6			
34+21	TO	35+76	SB	155	29-27	96.4	1.9	-	-	482.2	40.5	20.3	2.4			
35+76	TO	36+90	SB	114	27	68.4	1.4	-	-	342.0	28.7	14.4	1.8			
36+90	TO	37+75	SB	85	36	68.0	1.4	-	62.7	340.0	28.6	14.3	1.3			
37+75	TO	39+85	SB	210	27	126.0	2.5	-	-	630.0	52.9	26.5	3.3			
39+85	TO	40+62	SB	77	36	61.6	1.2	-	60.0	308.0	25.9	12.9	1.2			
40+62	TO	45+56	SB	494	27	296.4	5.9	37.5	-	1482.0	124.5	62.2	7.7			
45+56	TO	48+44	SB	288	27	BRIDGE OMISSION										
48+44	TO	48+82	SB	38	27	22.8	0.5	37.5	-	114.0	9.6	4.8	0.7			
48+82	TO	51+03	SB	221	27-39	162.1	3.2	-	-	810.3	68.1	34.0	4.1			
51+03	TO	53+57	SB	254	39	220.1	4.4	-	-	1100.7	92.5	46.2	4.7			
53+57	TO	54+26	SB	69	36	55.2	1.1	-	-	276.0	23.2	11.6	-			
54+26	TO	56+50	SB	224	27	134.4	2.7	-	32.3	672.0	56.4	28.2	-			
56+50	TO	57+42	SB	92	36	73.6	1.5	-	95.7	368.0	30.9	15.5	-			
57+42	TO	61+62	SB	420	27	252.0	5.0	-	-	1260.0	105.8	52.9	7.2			
61+62	TO	62+28	SB	66	36	52.8	1.1	-	25.0	264.0	22.2	11.1	1.1			
62+28	TO	69+18	SB	690	27	414.0	8.3	-	-	2070.0	173.9	86.9	11.8			
69+18	TO	70+63	SB	145	30	96.7	1.9	41.7	30.0	483.3	40.6	20.3	2.5			
SB TOTALS:						2562	51	138	306	12810	1076	538	61			
27+20	TO	28+91	NB	171	15	57.0	1.1	20.8	-	285.0	23.9	12.0	2.7			
28+91	TO	33+19	NB	428	15-24	185.5	3.7	-	-	927.3	77.9	38.9	6.6			
33+19	TO	35+76	NB	257	24-27	145.6	2.9	-	-	728.2	61.2	30.6	4.0			
35+76	TO	36+90	NB	114	27	68.4	1.4	-	-	342.0	28.7	14.4	1.8			
36+90	TO	37+75	NB	85	36	68.0	1.4	-	41.7	340.0	28.6	14.3	1.3			
37+75	TO	39+85	NB	210	27	126.0	2.5	-	-	630.0	52.9	26.5	3.3			
39+85	TO	40+62	NB	77	36	61.6	1.2	-	55.0	308.0	25.9	12.9	1.2			
40+62	TO	43+09	NB	247	39	214.1	4.3	-	-	1070.3	89.9	45.0	3.8			
43+09	TO	45+56	NB	247	39-27	181.1	3.6	37.5	-	905.7	76.1	38.0	3.8			
45+56	TO	48+44	NB	288	27	BRIDGE OMISSION										
48+44	TO	53+57	NB	513	27	307.8	6.2	37.5	-	1539.0	129.3	64.6	9.5			
53+57	TO	54+26	NB	69	36	55.2	1.1	-	-	276.0	23.2	11.6	-			
54+26	TO	56+50	NB	224	27	134.4	2.7	-	46.7	672.0	56.4	28.2	-			
56+50	TO	57+42	NB	92	36	73.6	1.5	-	-	368.0	30.9	15.5	-			
57+42	TO	59+17	NB	175	39	151.7	3.0	-	-	758.3	63.7	31.9	3.0			
59+17	TO	61+21	NB	204	39-27	149.6	3.0	-	-	748.0	62.8	31.4	3.5			
61+21	TO	61+62	NB	41	27	24.6	0.5	-	-	123.0	10.3	5.2	0.7			
61+62	TO	62+28	NB	66	36	52.8	1.1	-	14.3	264.0	22.2	11.1	1.1			
62+28	TO	69+18	NB	690	27	414.0	8.3	-	-	2070.0	173.9	86.9	11.8			
69+18	TO	70+63	NB	145	30	96.7	1.9	41.7	23.3	483.3	40.6	20.3	2.5			
NB TOTALS:						2567.6	51.4	137.5	181.0	12838.2	1078.4	539.2	60.5			
US 51 TOTALS:						5130	103	275	487	25648	2154	1077	121			
VETERANS AVE.																
1E+96	TO	4E+24	N/A	228	30	152.0	3.0	41.7	-	760.0	63.8	31.9	8.2			
4E+24	TO	7E+25	N/A	301	30-44	247.5	4.9	-	25.3	1237.4	103.9	52.0	10.9			
7E+25	TO	10E+48	N/A	323	VAR.	405.5	8.1	398.6	-	2027.7	170.3	85.2	5.9			
VETERANS AVE. TOTALS:						805	16	440	25	4025	338	169	25			
PROJECT TOTALS:						5935	119	715	512	29673	2493	1246	146			

MAINLINE STRIPING SCHEDULE

STATION TO STATION			THERMOPLASTIC PAVEMENT MARKING - LINE 4"	SHORT-TERM PAVEMENT MARKING	WORK ZONE PAVEMENT MARKING REMOVAL	RAISED REFLECTIVE PAVEMENT MARKER
			FOOT	FOOT	SQ FT	EACH
US 51						
27+20	TO	33+19	1947	240	40	7
33+19	TO	36+90	1645	148	25	9
36+90	TO	37+75	49	34	6	2
37+75	TO	39+85	658	84	14	5
39+85	TO	40+62	39	31	5	2
40+62	TO	45+56	2195	247	41	18
45+56	TO	48+44	BRIDGE OMISSION			
48+44	TO	53+57	2309	205	34	18
53+57	TO	54+26	122	78	13	2
54+26	TO	56+50	693	1002	167	6
56+50	TO	57+42	138	829	138	2
57+42	TO	61+62	1814	203	34	15
61+62	TO	62+28	57	26	4	2
62+28	TO	69+18	3105	276	46	18
69+18	TO	70+63	203	58	10	4
US 51 TOTAL =			14971	3461	577	110
VETERANS AVE.						
1E+96	TO	10E+48	3408	1279	213	12
PROJECT TOTAL =			18379	4740	790	122

CONCRETE CURB REPAIR

LOCATION	FOOT
US 51:	
NORTHBOUND	88
SOUTHBOUND	190
TOTAL US 51:	278
VETERANS AVE.:	
EASTBOUND	4
WESTBOUND	10
TOTAL VETERANS AVE.:	14
PROJECT TOTAL:	292

PERMANENT SURVEY MARKERS, TYPE I

LOCATION	DESCRIPTION	EACH
P. C. STA 7+36.15	PK NAIL	1
P. I. STA 8+36.88	PK NAIL	1
P. I. STA 10+84.22	PK NAIL	1
TOTAL =		3

* FOR INFORMATION ONLY: P. T. STA 9+34.12
CHISELED "X" IN CONC. MEDIAN

PATCHING SCHEDULE

LOCATION	CLASS D PATCHES, TYPE I, 14 INCH	CLASS D PATCHES, TYPE II, 14 INCH	CLASS D PATCHES, TYPE III, 14 INCH	CLASS D PATCHES, TYPE IV, 14 INCH	CLASS D PATCHES, TYPE II, 13 INCH	CLASS D PATCHES, TYPE III, 13 INCH
	SQ YD	SQ YD	SQ YD	SQ YD	SQ YD	SQ YD
US 51:						
NBDL	4	204	76	93	-	-
NBPL	-	111	40	-	-	-
NBTL	-	29	-	-	-	-
SBDL	8	115	36	60	-	-
SBPL	-	71	36	-	-	-
SBTL	-	21	-	-	-	-
TOTAL US 51:	12	551	188	153	0	0
VETERANS AVE.:						
EB	-	-	-	-	38	-
WB	-	-	-	-	60	39
TOTAL VETERANS AVE.:	0	0	0	0	98	39
PROJECT TOTAL:	12	551	188	153	98	39

INTERSECTION STRIPING SCHEDULE

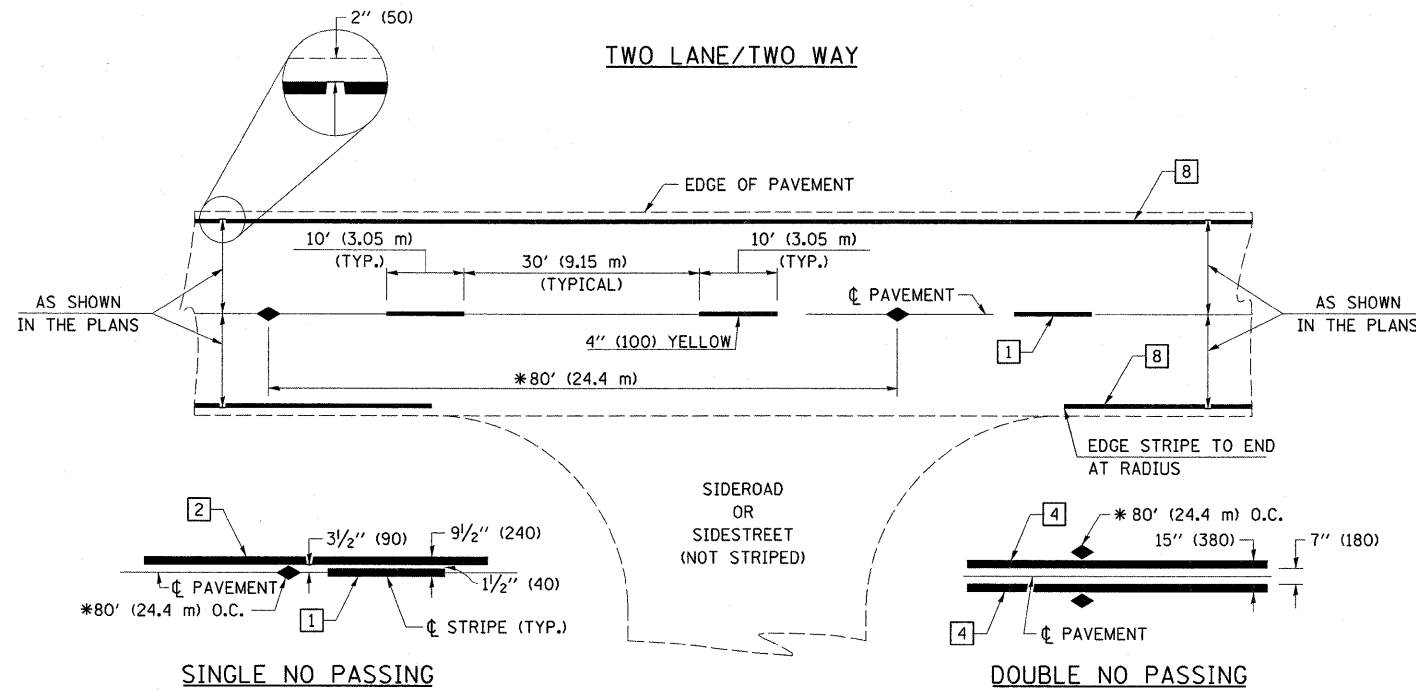
INTERSECTION	THERMOPLASTIC PAVEMENT MARKING - LINE 24"	THERMOPLASTIC PAVEMENT MARKING - LETTERS AND SYMBOLS	THERMOPLASTIC PAVEMENT MARKING - LINE 6"
	FOOT	SQ FT	FOOT
NORTH RAMPS & US 51	-	-	-
SOUTH LEG	-	62.4	247
SOUTH RAMPS & US 51	-	-	-
NORTH LEG	39	85.4	254
SOUTH LEG	37	-	-
VETERANS AVE. & US 51	-	-	-
NORTH LEG	27	-	-
SOUTH LEG	39	46.8	175
WEST LEG	75	62.4	192
TOTALS:	217	257	868

FILE NAME =	USER NAME = teasleyck	DESIGNED -	REVISED -
ca:\pw\work\p\idot\teasleyck\0186004\0724459-ah\tschedules.dgn		DRAWN -	REVISED -
PLOT SCALE = 50.0000' / IN.		CHECKED -	REVISED -
PLOT DATE = 2/10/2011		DATE -	REVISED -

STATE OF ILLINOIS
DEPARTMENT OF TRANSPORTATION

SCHEDULES

SCALE:	SHEET NO.	OF	SHEETS	STA.	TO STA.	F.A.P. RTE. 322	SECTION (26-2)RS-2	COUNTY Fayette	TOTAL SHEETS 11	SHEET NO. 7
ILLINOIS FED. AID PROJECT CONTRACT NO. 74459										



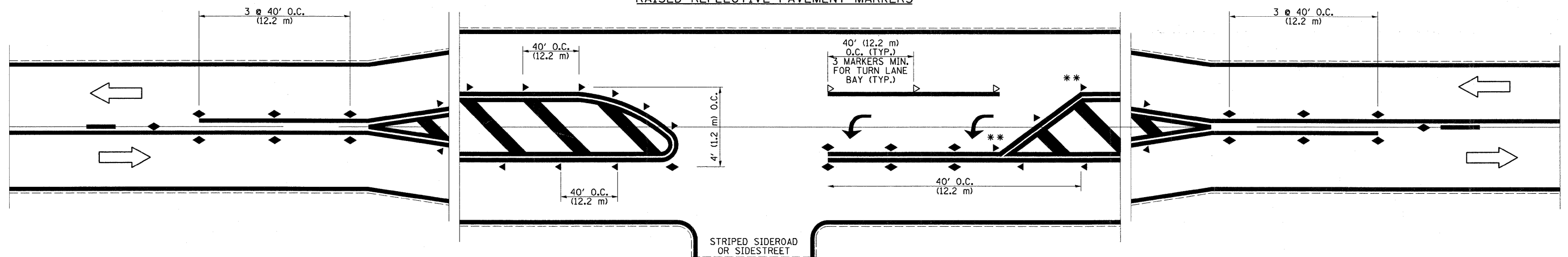
PAVEMENT MARKING LEGEND

- 1 4" (100) SKIP-DASH (YELLOW)
 - 2 4" (100) SOLID (YELLOW)
 - 3 12" (300) DIAGONAL (YELLOW)
 - 4 4" (100) DOUBLE YELLOW (NARROW)
 - 5 RESERVED
 - 6 RESERVED
 - 7 6" (150) SKIP-DASH (WHITE)
 - 8 4" (100) SOLID (WHITE)
 - 9 12" (300) DIAGONAL (WHITE)
 - 10 6" (150) SOLID (WHITE)
 - 11 24" (600) STOP BAR (WHITE)
 - 12 8" (200) SOLID (WHITE)
 - 13 4" (100) PARKING WHITE
-

TYPICAL PAVEMENT MARKERS LEGEND

- ◆ TWO-WAY AMBER MARKER
- ▶ ONE-WAY AMBER MARKER
- ▷ ONE-WAY CRYSTAL MARKER

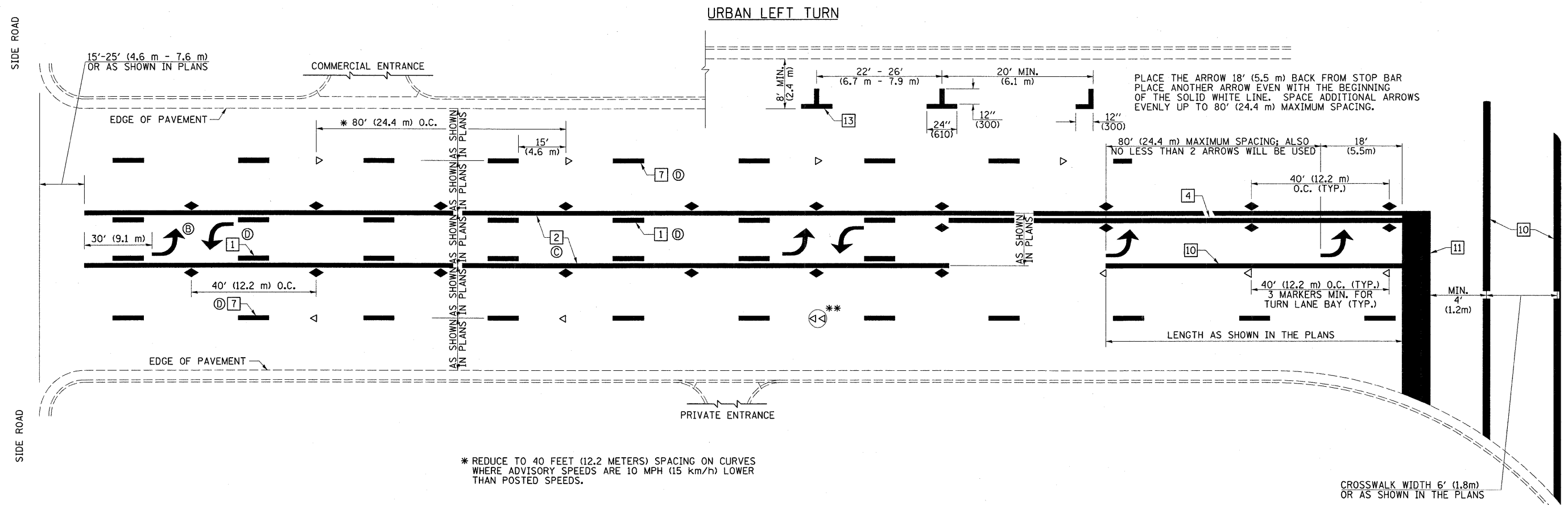
RAISED REFLECTIVE PAVEMENT MARKERS



NOT TO SCALE
 Note: All dimensions are in INCHES (millimeters) unless otherwise shown.

DISTRICT 7 DETAIL NO. 7800001

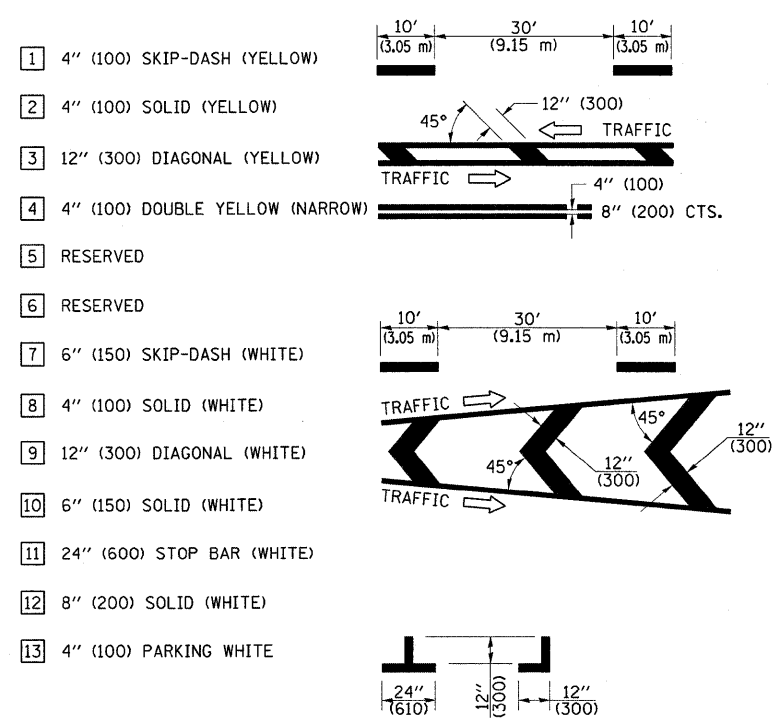
FILE NAME =	USER NAME = teasleyck	DESIGNED -	REVISED -	STATE OF ILLINOIS DEPARTMENT OF TRANSPORTATION	PAVEMENT MARKING AND RAISED REFLECTIVE PAVEMENT MARKERS (RURAL & URBAN APPLICATIONS)			F.A.P. RTE. 322	SECTION (26-2)RS-2	COUNTY Fayette	TOTAL SHEETS 11	SHEET NO. 8
cr:\pw_work\pwidot\teasleyck\08186204\0774459-sht-details.dgn	4459-sht-details.dgn	DRAWN -	REVISED -		SCALE:	SHEET NO. 1 OF 4 SHEETS	STA.	TO STA.	CONTRACT NO. 74459			
PLOT SCALE = 50.0000' / IN.		CHECKED -	REVISED -		ILLINOIS FED. AID PROJECT							
PLOT DATE = 2/10/2011		DATE -	REVISED -									



* REDUCE TO 40 FEET (12.2 METERS) SPACING ON CURVES WHERE ADVISORY SPEEDS ARE 10 MPH (15 km/h) LOWER THAN POSTED SPEEDS.

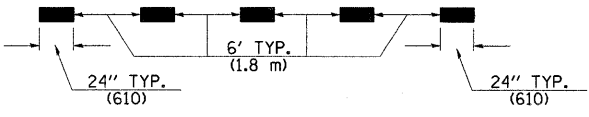
** DOUBLE LANE LINE MARKERS SHALL BE SPECIFIED AND SPACED AS SHOWN IN HIGHWAY STANDARD 781001 FOR MULTI-LANE DIVIDED AND UNDIVIDED HIGHWAYS.

PAVEMENT MARKING LEGEND

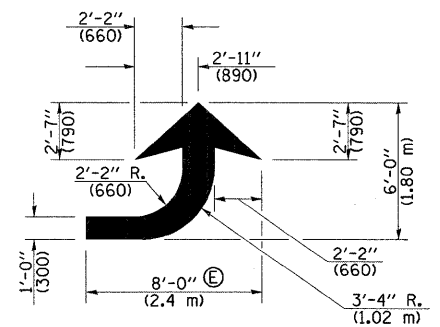


GENERAL NOTES

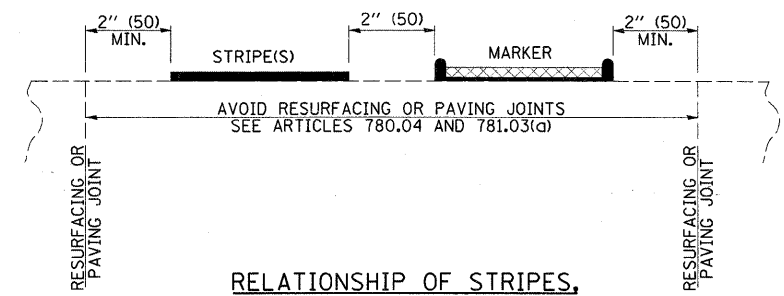
- TURN ARROW PAIRS SHALL BE PLACED AT 250' (75 m) INTERVALS AND SHALL BE EVENLY SPACED BETWEEN BOTH ENDS OF THE BIDIRECTIONAL LEFT TURN LANE. USE A MINIMUM OF TWO PAIRS PER BLOCK.
- THE SOLID YELLOW PAVEMENT MARKINGS [2] SHOULD GENERALLY START OR END NEAR THE RADIUS POINT OF EACH STREET RETURN EXCEPT WHERE ONE OR BOTH ENDS WOULD INCLUDE STOP BARS.
- THE SKIP-DASH PAVEMENT MARKINGS [1] OR [7] SHOULD BE CENTERED BETWEEN BOTH ENDS OF EACH CITY BLOCK AND SHALL BE PLACED SO THEY LINE UP ACROSS FROM EACH OTHER.
- USE LARGE ARROW SIZE FOR BOTH RURAL AND URBAN LOCATIONS. (SEE LAST PAGE OF SECTION 780X FOR SYMBOLS TABLE)
- LANE LINE EXTENSIONS SHALL BE THE SAME COLOR AND WIDTH AS THE LANE LINE BEING EXTENDED.



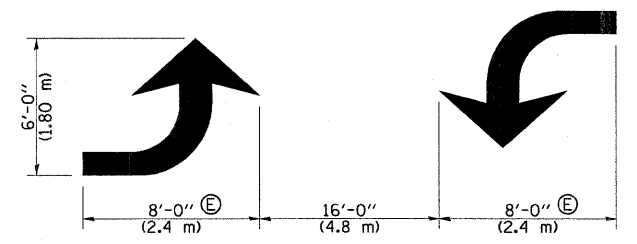
LANE LINE EXTENSIONS



LEFT ARROW
 REVERSE FOR RIGHT ARROW
 AREA = 15.6 SQ. FT. (1.47 m²)
 (WHITE)



RELATIONSHIP OF STRIPES, MARKERS AND JOINTS



TYPICAL DOUBLE TURN ARROWS (WHITE)

NOT TO SCALE

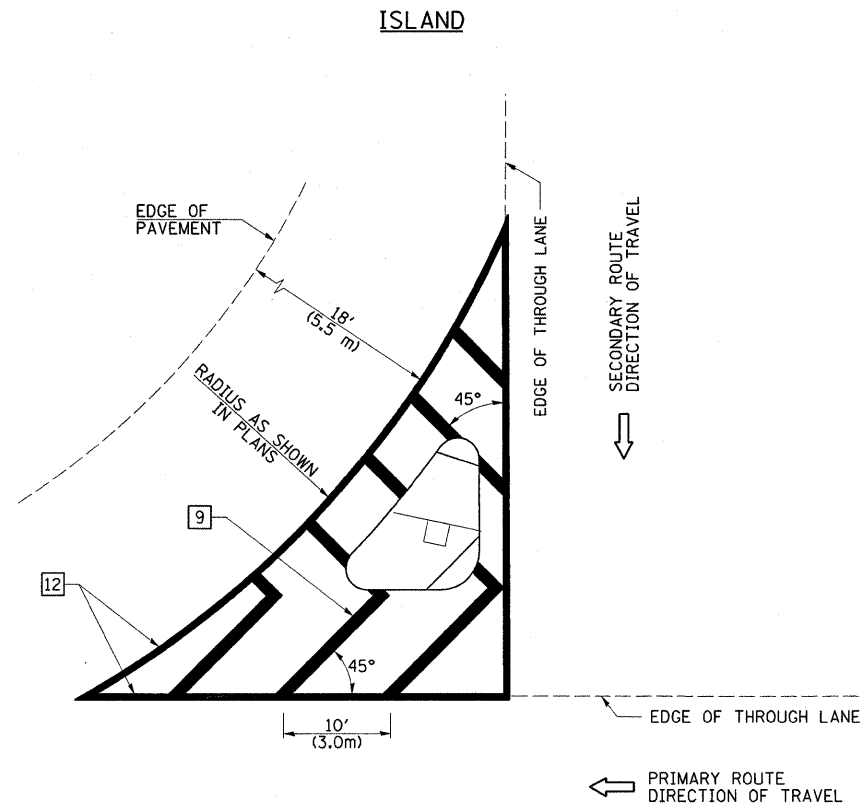
Note: All dimensions are in INCHES (millimeters) unless otherwise shown.

FILE NAME =	USER NAME = teasleyck	DESIGNED -	REVISED -
c:\pw_work\pvidot\teasleyck\d0189004\07	4459-sh-t-details.dgn	DRAWN -	REVISED -
	PLOT SCALE = 50.0000 / IN.	CHECKED -	REVISED -
	PLOT DATE = 2/18/2011	DATE -	REVISED -

STATE OF ILLINOIS DEPARTMENT OF TRANSPORTATION	
DESIGNED -	REVISED -
DRAWN -	REVISED -
CHECKED -	REVISED -
DATE -	REVISED -

PAVEMENT MARKING AND RAISED REFLECTIVE PAVEMENT MARKERS (RURAL & URBAN APPLICATIONS)			
SCALE:	SHEET NO. 2 OF 4 SHEETS	STA.	TO STA.

DISTRICT 7 DETAIL NO. 7800001				
F.A.P. RTE. 322	SECTION (26-2)RS-2	COUNTY Fayette	TOTAL SHEETS 11	SHEET NO. 9
CONTRACT NO. 74459			ILLINOIS FED. AID PROJECT	

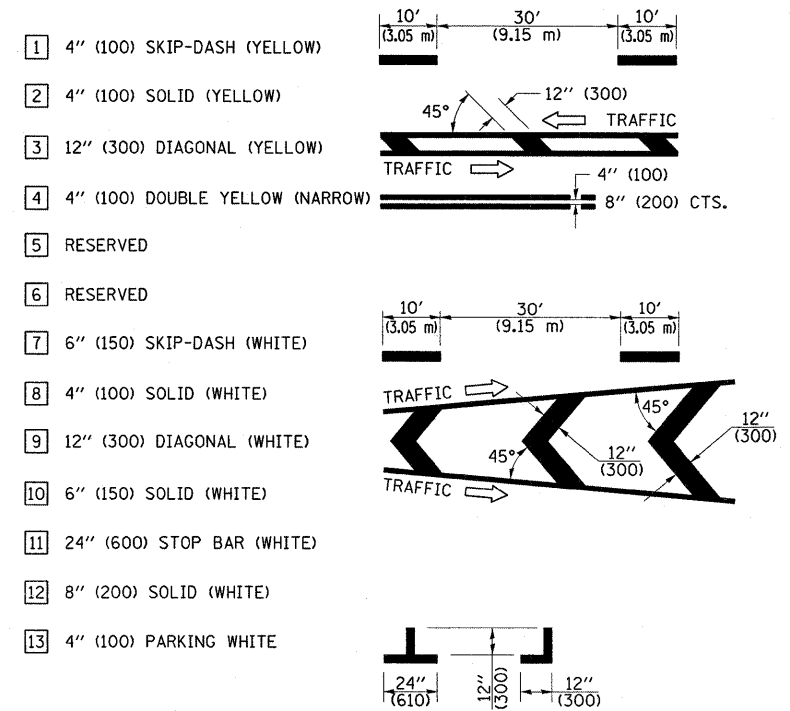


GENERAL NOTES

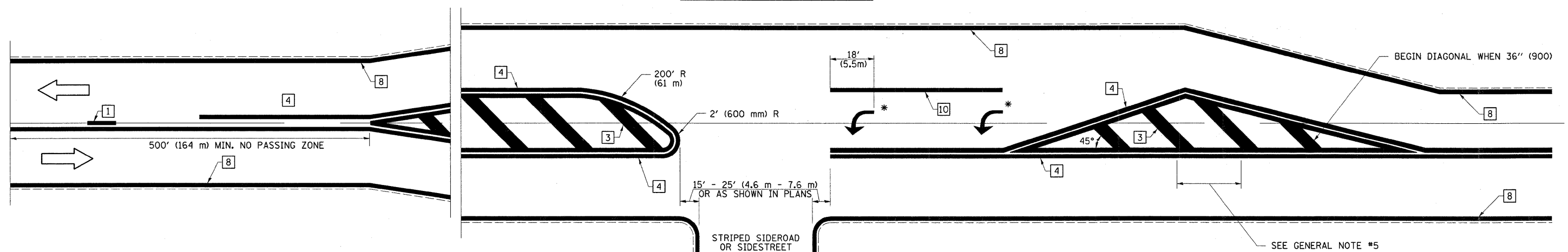
1. RAISED AND CORRUGATED MEDIANS SHALL BE OUTLINED WITH [2] IF PRESENT.
2. SOME OF THE INFORMATION INCLUDED WITH THIS DETAIL MAY NOT BE APPLICABLE TO THIS IMPROVEMENT.
3. PAVEMENT MARKINGS ARE TO BE EXTENDED THROUGH OMISSIONS WHEN APPLICABLE.
4. FINAL PAVEMENT MARKINGS SHALL BE IN PLACE PRIOR TO PLACING ANY RAISED REFLECTIVE PAVEMENT MARKERS.
5. THE FOLLOWING CRITERIA SHALL BE USED FOR SELECTING THE DIAGONAL PAVEMENT MARKING SPACING:

< 30 MPH (< 50 km/h)	15' (4.5 m)
30-45 MPH (50-75 km/h)	20' (6.0 m)
> 45 MPH (> 75 km/h)	30' (9.0 m)

PAVEMENT MARKING LEGEND



RURAL LEFT TURN STRIPING



* PLACE AN ARROW 18' (5.5 m) BACK FROM STOP BAR. PLACE ANOTHER ARROW EVEN WITH THE BEGINNING OF THE SOLID WHITE LINE. SPACE ADDITIONAL ARROWS EVENLY UP TO 80' (24.4 m) MAXIMUM SPACING. USE MINIMUM OF 2 ARROWS.

NOT TO SCALE
Note: All dimensions are in INCHES (millimeters) unless otherwise shown.

DISTRICT 7 DETAIL NO. 7800001

FILE NAME =	USER NAME = teasleyck	DESIGNED -	REVISED -
ca:\pw_work\p\idot\teasleyck\d0186004\07	4459-sh-t-details.dgn	DRAWN -	REVISED -
	PLOT SCALE = 50.0000' / IN.	CHECKED -	REVISED -
	PLOT DATE = 2/10/2011	DATE -	REVISED -

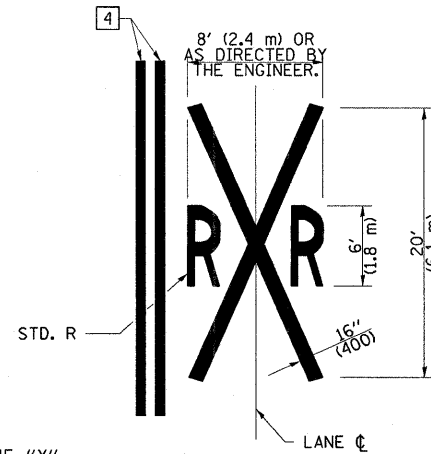
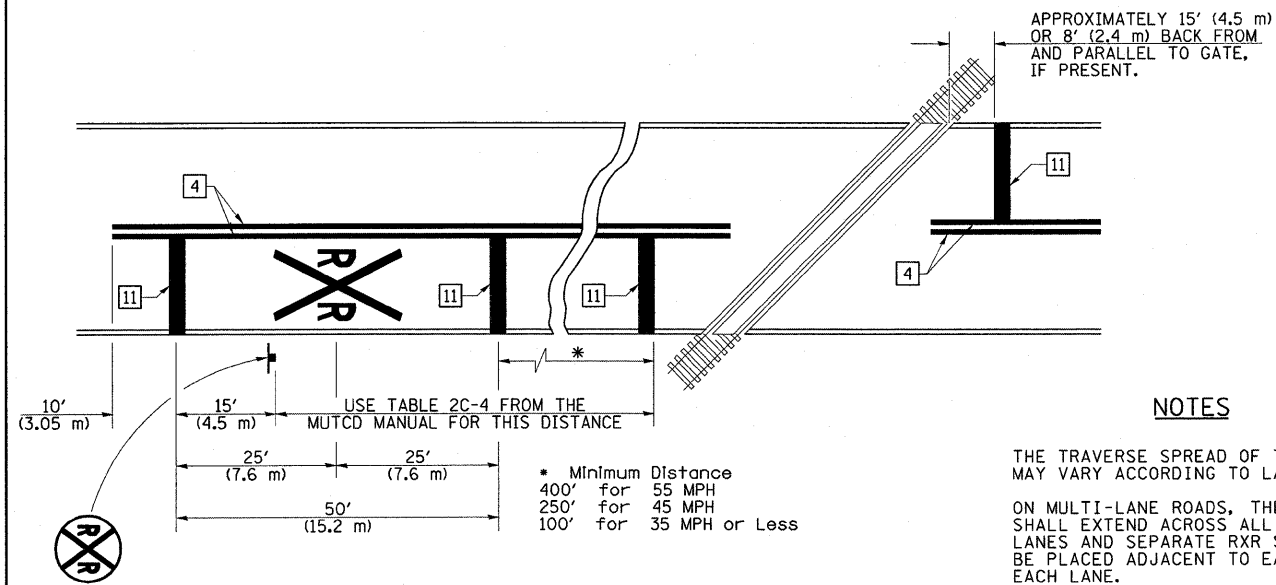
**STATE OF ILLINOIS
DEPARTMENT OF TRANSPORTATION**

**PAVEMENT MARKING AND RAISED REFLECTIVE PAVEMENT MARKERS
(RURAL & URBAN APPLICATIONS)**

SCALE: SHEET NO. 3 OF 4 SHEETS STA. TO STA.

F.A.P. RTE.	SECTION	COUNTY	TOTAL SHEETS	SHEET NO.
322	(26-2)RS-2	Fayette	11	10
CONTRACT NO. 74459				
ILLINOIS FED. AID PROJECT				

PAVEMENT MARKINGS AT RAILROAD-HIGHWAY GRADE CROSSING



NOTES

THE TRAVERSE SPREAD OF THE "X" MAY VARY ACCORDING TO LANE WIDTH.

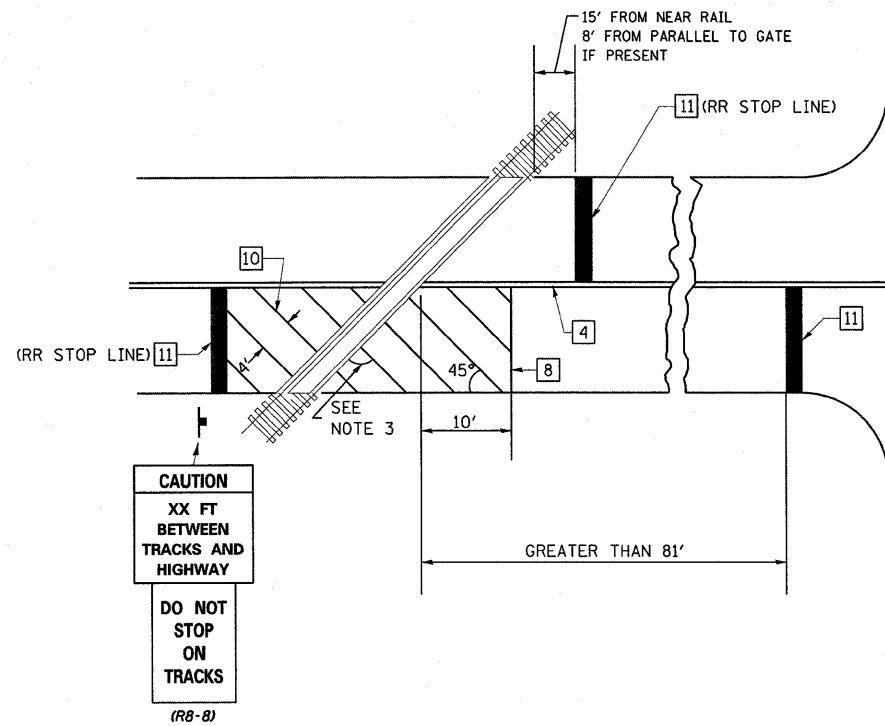
ON MULTI-LANE ROADS, THE STOP LINES SHALL EXTEND ACROSS ALL APPROACH LANES AND SEPARATE RXR SYMBOLS SHALL BE PLACED ADJACENT TO EACH OTHER IN EACH LANE.

WHEN THE PAVEMENT MARKING SYMBOL IS USED, A PORTION OF THE SYMBOL SHOULD BE LOCATED DIRECTLY ADJACENT TO THE ADVANCE WARNING SIGN (W10-1) AS PLACED BY TABLE II-1, CONDITION B OF THE MUTCD.

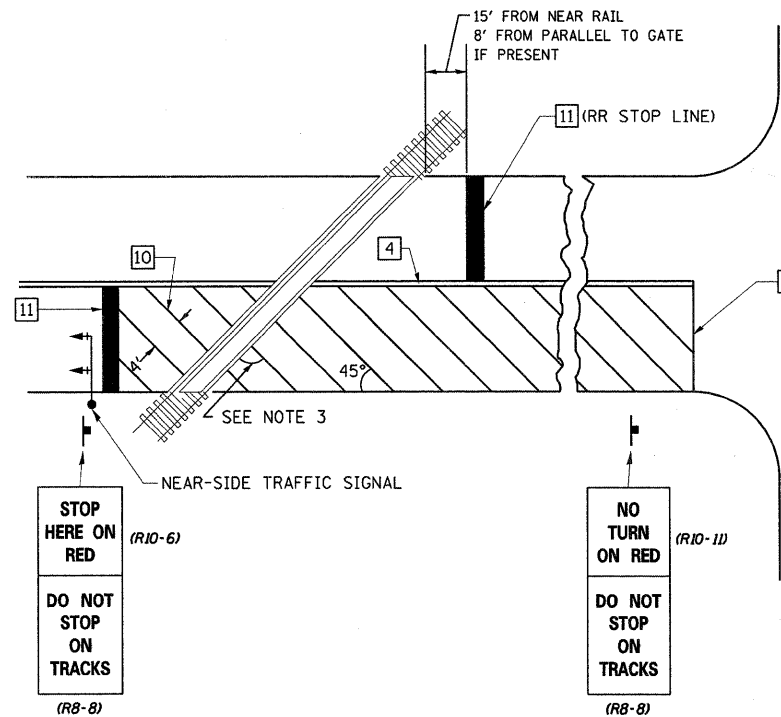
PAVEMENT MARKING LEGEND

- 1 4" (100) SKIP-DASH (YELLOW)
 - 2 4" (100) SOLID (YELLOW)
 - 3 12" (300) DIAGONAL (YELLOW)
 - 4 4" (100) DOUBLE YELLOW (NARROW)
 - 5 RESERVED
 - 6 RESERVED
 - 7 6" (150) SKIP-DASH (WHITE)
 - 8 4" (100) SOLID (WHITE)
 - 9 12" (300) DIAGONAL (WHITE)
 - 10 6" (150) SOLID (WHITE)
 - 11 24" (600) STOP BAR (WHITE)
 - 12 8" (200) SOLID (WHITE)
 - 13 4" (100) PARKING WHITE
-

RAILROAD CROSSING WITH INTERCONNECT ONLY



RAILROAD CROSSING WITH INTERCONNECT AND PRE-SIGNALS



GENERAL NOTES

1. SUPPLEMENTAL PAVEMENT MARKINGS TO BE INSTALLED ONLY ON APPROACHES TO INTERSECTIONS CONTROLLED BY TRAFFIC SIGNALS WHICH ARE INTERCONNECTED WITH THE RAILROAD WARNING SIGNALS.
2. EXTEND PAVEMENT MARKINGS TO THE INTERSECTION ONLY WHERE NEAR-SIDE TRAFFIC SIGNALS ARE USED.
3. WHERE THE ANGLE BETWEEN THE DIAGONAL PAVEMENT MARKINGS AND THE TRACK WOULD BE LESS THAN 20°, THE PAVEMENT MARKINGS SHOULD BE PLACED IN THE OPPOSITE DIRECTION FROM THAT SHOWN.

SUPPLEMENTAL PAVEMENT MARKING TREATMENT FOR RAILROAD-HIGHWAY GRADE CROSSING

NOT TO SCALE

Note: All dimensions are in INCHES (millimeters) unless otherwise shown.

DISTRICT 7 DETAIL NO. 7800001

FILE NAME =	USER NAME = teasleyck	DESIGNED -	REVISED -
ca:\pw\work\pwidot\teasleyck\d8186004\0724459-sht-details.dgn	4459-sht-details.dgn	DRAWN -	REVISED -
	PLOT SCALE = 50.0000" / IN.	CHECKED -	REVISED -
	PLOT DATE = 2/10/2011	DATE -	REVISED -

STATE OF ILLINOIS
DEPARTMENT OF TRANSPORTATION

PAVEMENT MARKING AND RAISED REFLECTIVE PAVEMENT MARKERS
(RURAL & URBAN APPLICATIONS)

SCALE: SHEET NO. 4 OF 4 SHEETS STA. TO STA.

F.A.P. RTE.	SECTION	COUNTY	TOTAL SHEETS	SHEET NO.
322	(26-2)RS-2	Fayette	11	11
CONTRACT NO. 74459			ILLINOIS FED. AID PROJECT	