

STATE OF ILLINOIS
DEPARTMENT OF TRANSPORTATION
DIVISION OF HIGHWAYS

**PROPOSED
HIGHWAY PLANS**

FAI ROUTE 70 (I-70)
SECTION (18-47)I
PROJECT IM-070-4(140)120
MEDIAN CROSSOVER
CUMBERLAND COUNTY
C-97-131-10

F.A.I. RTE.	SECTION	COUNTY	TOTAL SHEETS	SHEET NO.
70	(18-47)I	CUMBERLAND	47	1
ILLINOIS			CONTRACT NO. 74481	

FOR INDEX OF SHEETS, SEE SHEET NO. 2

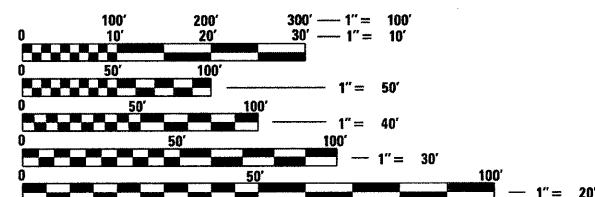
STATION EQUATIONS:

STA. 575 + 54.38 (BK) = STA. 80 + 00.00 (AH)

ADT = 19,400 (2010)

FAI ROUTE 70
SECTION (18-47)I
END STA. 181 + 50
CUMBERLAND COUNTY

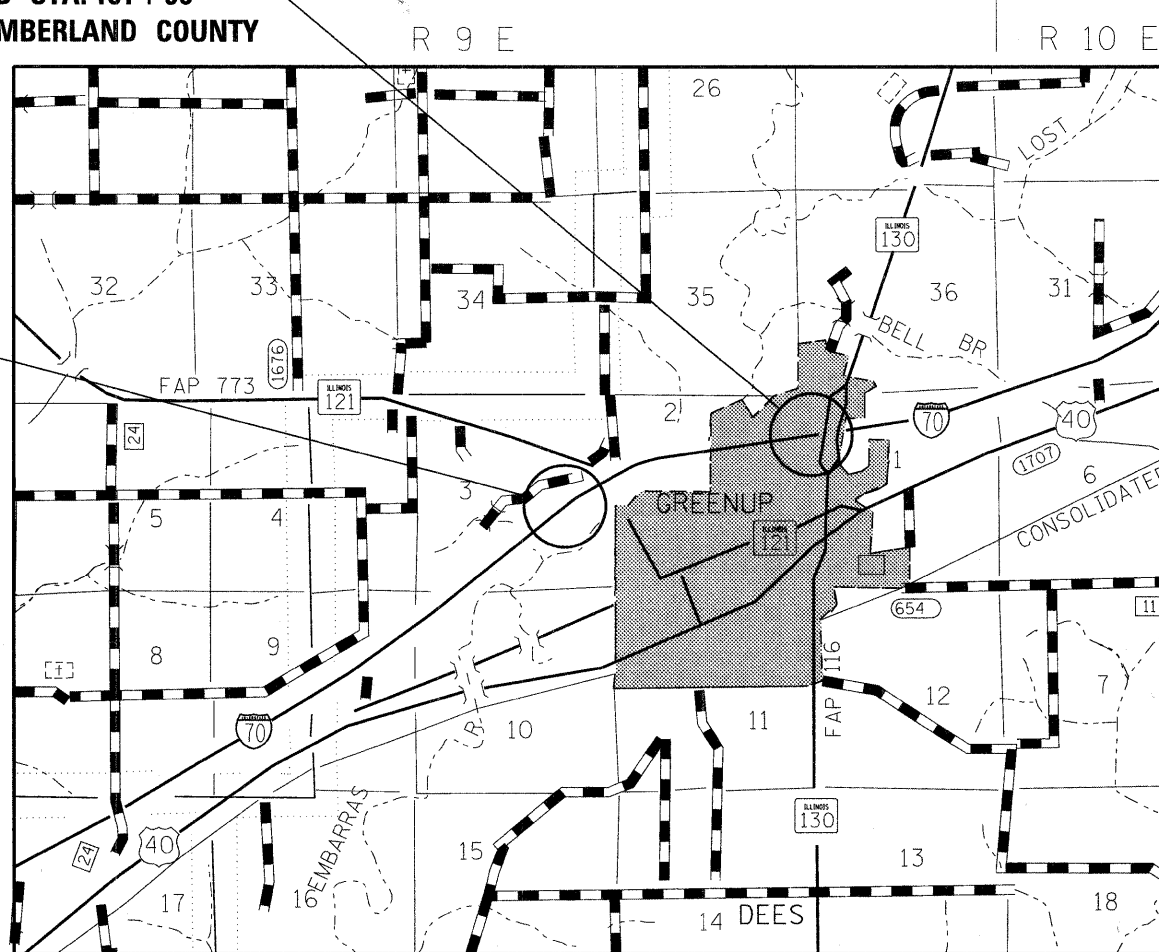
FAI ROUTE 70
SECTION (18-47)I
BEGIN STA. 573 + 00
CUMBERLAND COUNTY



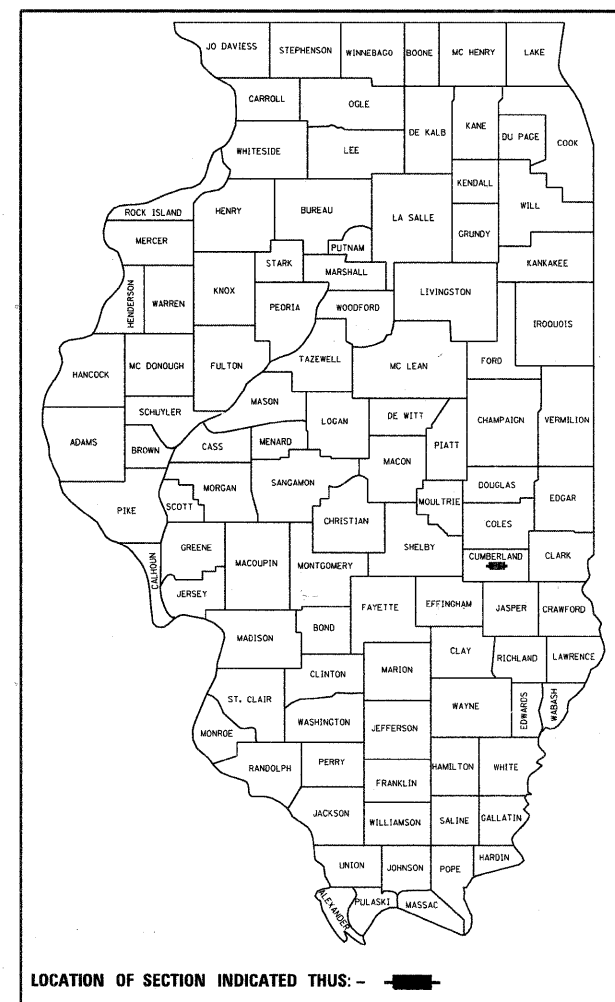
FULL SIZE PLANS HAVE BEEN PREPARED USING STANDARD ENGINEERING SCALES. REDUCED SIZED PLANS WILL NOT CONFORM TO STANDARD SCALES. IN MAKING MEASUREMENTS ON REDUCED PLANS, THE ABOVE SCALES MAY BE USED.

J.U.L.I.E.
JOINT UTILITY LOCATION INFORMATION FOR EXCAVATION
1-800-892-0123
OR 811

PROJECT ENGINEER: TOM RONAN
PROJECT MANAGER: JENNIFER WENTHE
PHONE: (217)-342-8361
CONTRACT NO. 74481



GROSS LENGTH = 10,404.4 FT. = 1.97 MILE
NET LENGTH = 2,579.4 FT. = 0.49 MILE



STATE OF ILLINOIS
DEPARTMENT OF TRANSPORTATION
DIVISION OF HIGHWAYS

SUBMITTED Jan 31 20 11
Ron I. Ronan
DEPUTY DIRECTOR OF HIGHWAYS, REGION ENGINEER

March 05 20 11
Scott E. Stitt, P.E.
Acting ENGINEER OF DESIGN AND ENVIRONMENT

March 05 20 11
Christine M. Reed
DIRECTOR OF HIGHWAYS, CHIEF ENGINEER

**PRINTED BY THE AUTHORITY
OF THE STATE OF ILLINOIS**