

STATE OF ILLINOIS
DEPARTMENT OF TRANSPORTATION
DIVISION OF HIGHWAYS

**PROPOSED
HIGHWAY PLANS**

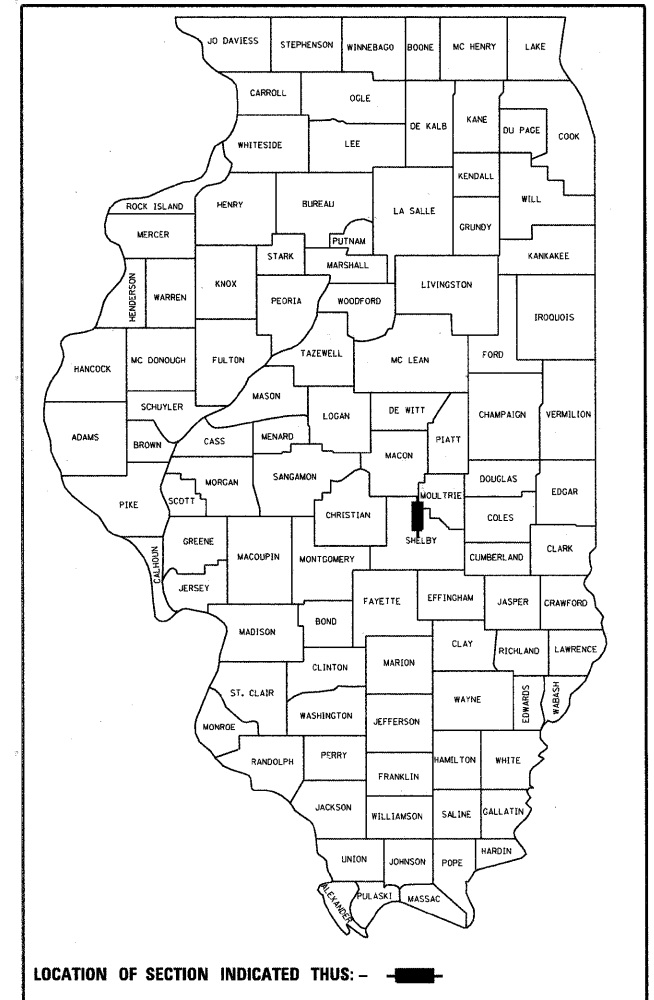
FAP ROUTE 770 (IL 128)
SECTION D7 HMA SAFETY SHLD 2011-1
PROJECT HSIP-0770(015)
SAFETY IMPROVEMENTS
SHELBY COUNTY

C-97-015-11

F.A.P. RTE.	SECTION	COUNTY	TOTAL SHEETS	SHEET NO.
770		Shelby	24	1
		ILLINOIS	CONTRACT NO. 74504	

D7 HMA SAFETY SHLD 2011-1

D-97-004-11

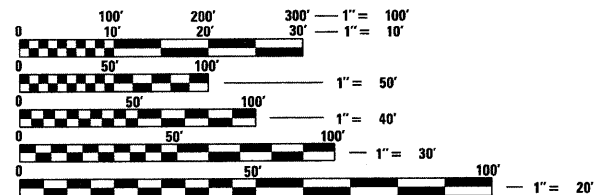


FOR INDEX OF SHEETS, SEE SHEET NO. 2

OMISSIONS

STR. NO. 087-9900
STA 305+97 TO STA 346+23
STR. NO. 087-0017
STA 405+60 TO STA 412+99

ADT (2009) = 3265

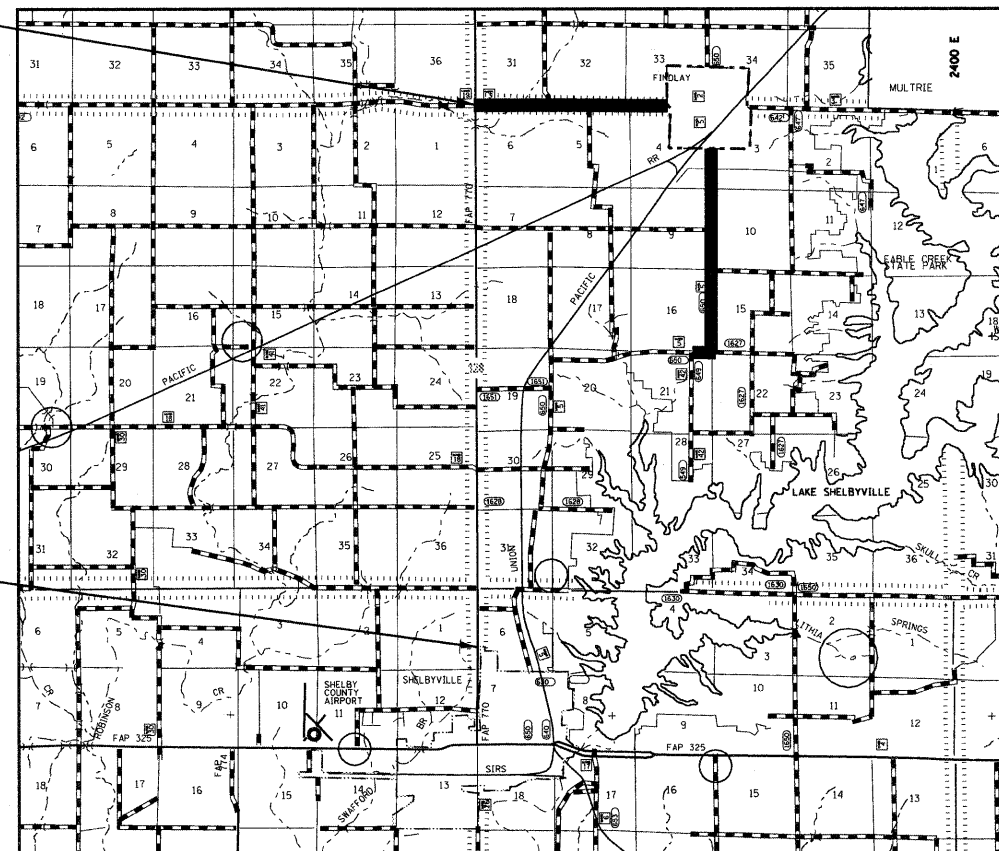


FULL SIZE PLANS HAVE BEEN PREPARED USING STANDARD ENGINEERING SCALES. REDUCED SIZED PLANS WILL NOT CONFORM TO STANDARD SCALES. IN MAKING MEASUREMENTS ON REDUCED PLANS, THE ABOVE SCALES MAY BE USED.

J.U.L.I.E.
JOINT UTILITY LOCATION INFORMATION FOR EXCAVATION
1-800-892-0123
OR 811

PROJECT ENDS
STA 420+08

PROJECT BEGINS
STA 48+29



GROSS LENGTH = 37,179 FT. = 7.04 MILE
NET LENGTH = 32,414 FT. = 6.14 MILE

PROJECT ENGINEER: MARK DAUGHERTY
PROJECT MANAGER: KALEB HIRTZEL

CONTRACT NO. 74504

STATE OF ILLINOIS
DEPARTMENT OF TRANSPORTATION
DIVISION OF HIGHWAYS

SUBMITTED DECEMBER 14 2010
Regan Z. Dinkel
DEPUTY DIRECTOR OF HIGHWAYS, REGION ENGINEER

February 4 2011
Scott E. Stitt, P.E.
acting ENGINEER OF DESIGN AND ENVIRONMENT

February 4 2011
Christine M. Reed
DIRECTOR OF HIGHWAYS, CHIEF ENGINEER

**PRINTED BY THE AUTHORITY
OF THE STATE OF ILLINOIS**

GENERAL NOTES

THIS SECTION SHALL BE CONSTRUCTED IN ACCORDANCE WITH THE PLANS; THE "STANDARD SPECIFICATIONS FOR ROAD AND BRIDGE CONSTRUCTION" ADOPTED JANUARY 1, 2007; THE SUPPLEMENTAL SPECIFICATIONS AND RECURRING SPECIAL PROVISIONS INDICATED ON THE CHECK SHEET, AND "THE SPECIAL PROVISIONS" INCLUDED IN THIS PROPOSAL.

THE PROPOSED PROJECT IS LOCATED ON ILL 128 IN SHELBY COUNTY. THE PROJECT BEGINS AT NORTH 12TH STREET IN SHELBYVILLE AND ENDS AT FINDLAY ROAD NORTH OF SHELBYVILLE. THE WORK INCLUDED IN SECTION D7 HMA SAFETY SHLD 2011-1 CONSISTS OF HOT-MIX ASPHALT SHOULDERS WITH RUMBLE STRIPS, AN AGGREGATE SHOULDER WEDGE AND PIPE CULVERT REMOVAL AND REPLACEMENT.

THE CONTRACTOR SHALL PROVIDE INTERNET ACCESS TO THE HOT-MIX ASPHALT PLANT QUALITY CONTROL LAB SO THAT HOT-MIX ASPHALT PLANT REPORTS CAN BE E-MAILED TO THE DISTRICT HEADQUARTERS. THIS WORK SHALL BE INCLUDED IN THE COST OF HOT-MIX ASPHALT ITEMS.

AGGREGATE SHOULDERS, TYPE B SHALL BE CRUSHED STONE, CRUSHED CONCRETE, OR RAP.

THE MILLINGS COLLECTED FROM THE EXCAVATION OF THE HMA SHOULDERS SHALL BE USED AS BACKFILL FOR THE PROPOSED PIPE CULVERTS. THE PIPE CULVERTS SHALL BE BACKFILLED PER ARTICLE 542.06 (D) OF THE STANDARD SPECIFICATIONS. THE COST OF USING THE MILLINGS AS BACKFILL MATERIAL SHALL BE INCLUDED IN THE CONTRACT UNIT PRICE PER UNIT FOR EXCAVATING AND GRADING EXISTING SHOULDER.

THE TOTAL QUANTITY OF PAINT PAVEMENT MARKING - LINE 4" CONSISTS OF 64,047 FEET OF WHITE AND 9,517 FEET OF YELLOW.

THE FOLLOWING MIXTURE REQUIREMENTS ARE APPLICABLE FOR THIS PROJECT:

HMA SHOULDER

MIXTURE USE: HMA SHOULDERS, 8"
 APPLICATION: HOT-MIX ASPHALT SHOULDERS
 PG GRADE: PG 58-22
 DESIGN AIR VOIDS: 4.0% @ NDESIGN = 30
 MIXTURE COMPOSITION: IL-19.0L
 FRICTION AGGREGATE: N/A

INCIDENTAL HMA SURFACING

MIXTURE USE: INCIDENTAL HMA SURFACING (DRIVEWAYS/SIDEROADS)
 APPLICATION: HOT-MIX ASPHALT SURFACE COURSE, MIX "C", N70
 PG GRADE: PG 64-22
 DESIGN AIR VOIDS: 4.0% @ NDESIGN = 70
 MIXTURE COMPOSITION: IL-9.5
 FRICTION AGGREGATE: MIXTURE C

INDEX OF SHEETS

SHEET NO.	ITEM
1	COVER SHEET
2	INDEX OF SHEETS & GENERAL NOTES
3	SUMMARY OF QUANTITIES
4	TYPICAL CROSS-SECTIONS
5	SCHEDULES
6	ENTRANCE SCHEDULE AND DETAILS
7-19	PLAN SHEETS
20	RUMBLE STRIP & HMA SHOULDER DETAIL
21-24	TYPICAL APPLICATIONS OF PAVEMENT MARKING

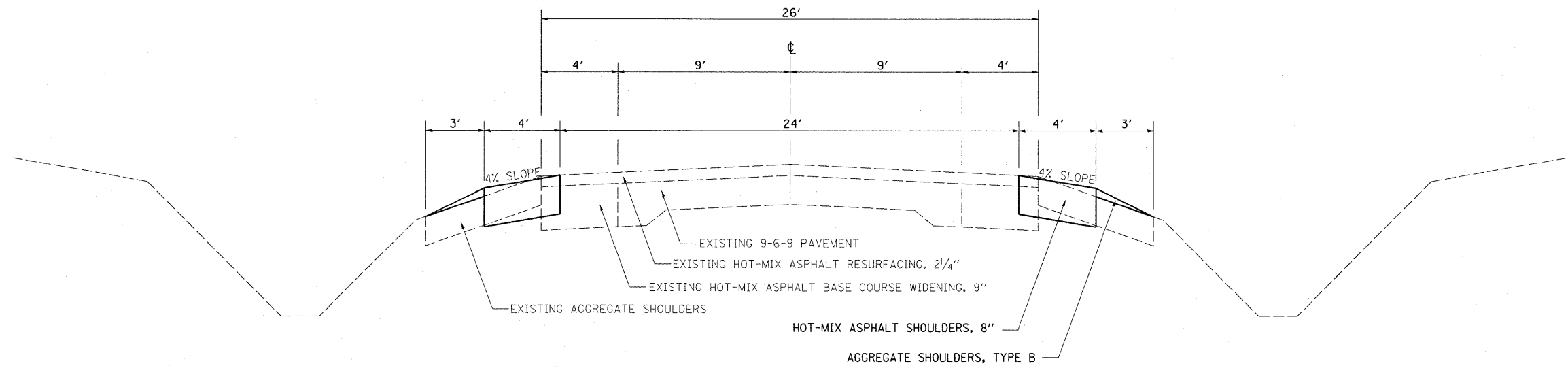
THE FOLLOWING STANDARDS ARE A PART OF THESE PLANS AND ARE INCLUDED AFTER SHEET NO. 24:

STD. NO.	DESCRIPTION
000001-06	STANDARD SYMBOLS, ABBREVIATIONS AND PATTERNS
001006	DECIMAL OF AN INCH AND OF A FOOT
482001-02	HMA SHOULDER ADJACENT TO FLEXIBLE PAVEMENT
701011-02	OFF-RD MOVING OPERATIONS, 2L, 2W, DAY ONLY
701201-04	LANE CLOSURE, 2L 2W, DAY ONLY, FOR SPEEDS ≥ 45 MPH
701311-03	LANE CLOSURE, 2L, 2W, MOVING OPERATIONS - DAY ONLY
701326-04	LANE CLOSURE, 2L, 2W, PAVEMENT WIDENING, FOR SPEEDS ≥ 45 MPH
701901-01	TRAFFIC CONTROL DEVICES

FILE NAME =	USER NAME = *USER*	DESIGNED -	REVISED -	STATE OF ILLINOIS DEPARTMENT OF TRANSPORTATION	GENERAL NOTES AND INDEX OF SHEETS		F.A.P. RTE.	SECTION	COUNTY	TOTAL SHEETS	SHEET NO.
FILEL		DRAWN -	REVISED -		770	*	Shelby	24	2		
	PLOT SCALE = *SCALE*	CHECKED -	REVISED -				CONTRACT NO. 74504				
	PLOT DATE = *DATE*	DATE -	REVISED -		SCALE:	SHEET NO. OF SHEETS	STA. TO STA.	ILLINOIS FED. AID PROJECT			

SUMMARY OF QUANTITIES			TOTAL QUANTITIES	CONSTRUCTION TYPE CODE		
CODE NO	ITEM	UNIT		0021 90% FEDERAL 10% STATE		
20200600	EXCAVATING AND GRADING EXISTING SHOULDER	UNIT	638	638		
35101400	AGGREGATE BASE COURSE, TYPE B	TON	7	7		
40200800	AGGREGATE SURFACE COURSE, TYPE B	TON	110	110		
40201000	AGGREGATE FOR TEMPORARY ACCESS	TON	4	4		
40800050	INCIDENTAL HOT-MIX ASPHALT SURFACING	TON	21	21		
48101200	AGGREGATE SHOULDERS, TYPE B	TON	3229	3229		
48203029	HOT-MIX ASPHALT SHOULDERS, 8"	SQ YD	28353	28353		
50105220	PIPE CULVERT REMOVAL	FOOT	783	783		
54213450	END SECTIONS 15"	EACH	62	62		
54213453	END SECTIONS 18"	EACH	10	10		
542D0220	PIPE CULVERTS, CLASS D, TYPE 1 15"	FOOT	839	839		
542D0223	PIPE CULVERTS, CLASS D, TYPE 1 18"	FOOT	162	162		
64200105	SHOULDER RUMBLE STRIPS	FOOT	62332	62332		
67000500	ENGINEER'S FIELD OFFICE, TYPE B	CAL MO	2	2		
67100100	MOBILIZATION	L SUM	1	1		
70100450	TRAFFIC CONTROL AND PROTECTION, STANDARD 701201	L SUM	1	1		
70100500	TRAFFIC CONTROL AND PROTECTION, STANDARD 701326	L SUM	1	1		
*78001110	PAINT PAVEMENT MARKING - LINE 4"	FOOT	73564	73564		
	*SPECIALTY ITEM					

FILE NAME =	USER NAME = #USER#	DESIGNED -	REVISED -	STATE OF ILLINOIS DEPARTMENT OF TRANSPORTATION	SUMMARY OF QUANTITIES			F.A.P. RTE.	SECTION	COUNTY	TOTAL SHEETS	SHEET NO.	
#FILE#		DRAWN -	REVISED -					770	.	Shelby	24	3	
	PLOT SCALE = #SCALE#	CHECKED -	REVISED -		SCALE:	SHEET NO.	OF	SHEETS	STA.	TO STA.	ILLINOIS FED. AID PROJECT		
	PLOT DATE = #DATE#	DATE -	REVISED -		CONTRACT NO. 74504								



STA 48+29 LT TO STA 305+97 LT
 STA 49+25 RT TO STA 305+97 RT
 STA 305+97 TO STA 346+23 BRIDGE OMISSION
 STA 346+23 TO STA 405+60
 STA 405+60 TO STA 412+99 BRIDGE OMISSION
 STA 412+99 TO STA 420+00

FILE NAME =	USER NAME = teasleyck	DESIGNED -	REVISED -
c:\pwork\pwork\teasleyck\d8239387\07	4504-shr-typico1s.dgn	DRAWN -	REVISED -
	PLOT SCALE = 50.0000' / IN.	CHECKED -	REVISED -
	PLOT DATE = 12/14/2010	DATE -	REVISED -

STATE OF ILLINOIS
DEPARTMENT OF TRANSPORTATION

TYPICALS			
SCALE:	SHEET NO.	OF SHEETS	STA. TO STA.

F.A.P. RTE.	SECTION	COUNTY	TOTAL SHEETS	SHEET NO.
770		Shelby	24	4
CONTRACT NO. 74504				
ILLINOIS FED. AID PROJECT				

PIPE CULVERT REMOVAL

STATION	SIDE	TYPE	SIZE (INCHES)	QUANTITY (FOOT)
50+42.81	LT	RCP	18	28.5
83+68.69	LT	VCP	15	17.7
103+56.10	RT	VCP	15	18.0
116+76.10	LT	VCP	15	17.8
125+68.02	LT	VCP	15	21.7
135+41.94	RT	VCP	12	17.7
139+65.39	LT	VCP	12	17.7
141+75.96	RT	VCP	12	17.6
148+55.77	LT	VCP	15	17.9
156+51.05	RT	VCP	15	17.9
185+53.01	RT	VCP	15	22.3
191+88.42	RT	VCP	15	18.0
193+44.18	LT	CMP	15	32.3
205+93.22	RT	VCP	15	34.0
210+05.79	LT	VCP	15	33.8
222+39.62	LT	VCP	12	31.6
222+46.38	RT	VCP	15	22.3
234+22.94	RT	VCP	18	31.8
235+66.40	LT	VCP	18	33.7
247+48.33	RT	VCP	18	18.0
260+23.82	LT	VCP	15	22.2
273+82.94	LT	VCP	18	18.2
278+90.45	RT	VCP	15	22.1
288+75.28	RT	VCP	12	18.2
301+18.25	LT	VCP	15	18.0
354+65.65	LT	VCP	15	18.1
377+69.84	RT	VCP	15	22.2
377+69.84	RT	CMP	15	22.3
383+07.16	LT	VCP	15	24.8
384+26.66	LR	VCP	15	17.8
393+66.91	RT	VCP	15	18.0
393+66.91	RT	CMP	15	18.4
401+29.48	LT	VCP	15	18.1
403+53.53	LT	VCP	15	17.7
413+34.98	LT	VCP	12	18.3
413+45.00	RT	VCP	15	18.0
TOTAL =				783

PIPE CULVERT SCHEDULE

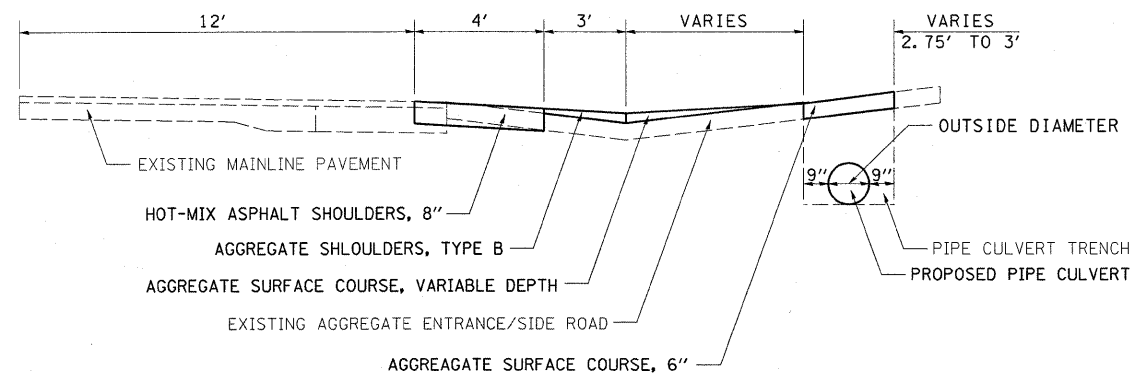
STATION	SIDE	PIPE CULVERT, CLASS D, TYPE I, 15"	PIPE CULVERT, CLASS D, TYPE I, 18"	END SECTIONS, 15"	END SECTIONS, 18"
-	-	FOOT	FOOT	EACH	EACH
50+42.81	LT	-	34.0	-	2
83+68.69	LT	24.0	-	2	-
103+56.10	RT	24.0	-	2	-
116+76.10	LT	24.0	-	2	-
125+68.02	LT	26.0	-	2	-
135+41.94	RT	24.0	-	2	-
139+65.39	LT	24.0	-	2	-
141+75.96	RT	24.0	-	2	-
148+55.77	LT	24.0	-	2	-
156+51.05	RT	24.0	-	2	-
185+53.01	RT	28.0	-	2	-
191+88.42	RT	24.0	-	2	-
193+44.18	LT	38.0	-	2	-
205+93.22	RT	40.0	-	2	-
210+05.79	LT	40.0	-	2	-
222+39.62	LT	38.0	-	2	-
222+46.38	RT	28.0	-	2	-
234+22.94	RT	-	38.0	-	2
235+66.40	LT	-	42.0	-	2
247+48.33	RT	-	24.0	-	2
260+23.82	LT	28.0	-	2	-
273+82.94	LT	-	24.0	-	2
278+90.45	RT	28.0	-	2	-
288+75.28	RT	24.0	-	2	-
301+18.25	LT	24.0	-	2	-
354+65.65	LT	24.0	-	2	-
377+69.84	RT	28.0	-	2	-
377+69.84	RT	28.0	-	2	-
383+07.16	LT	33.0	-	2	-
384+26.66	LR	24.0	-	2	-
393+66.91	RT	24.0	-	2	-
393+66.91	RT	24.0	-	2	-
401+29.48	LT	24.0	-	2	-
403+53.53	LT	24.0	-	2	-
413+34.98	LT	24.0	-	2	-
413+45.00	RT	24.0	-	2	-
TOTALS		839	162	62	10

SHOULDER SCHEDULE

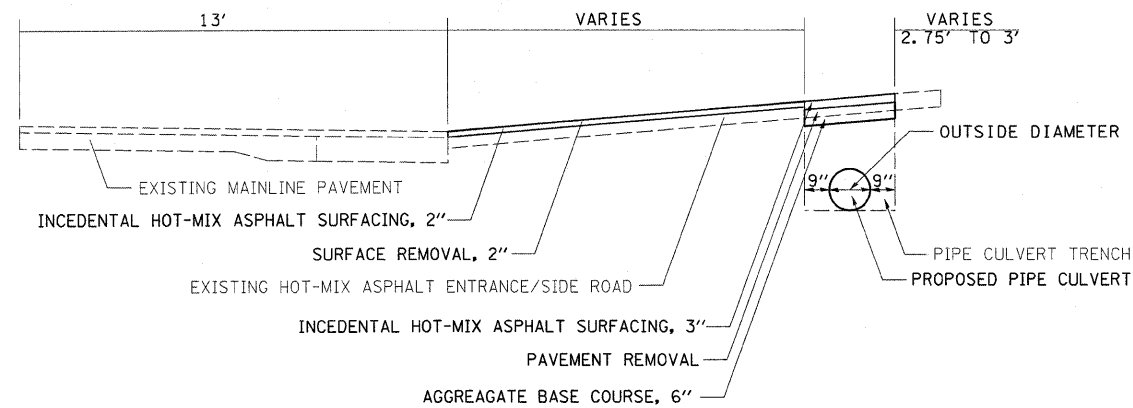
STATION TO STATION			SIDE	LENGTH	EXCAVATING AND GRADING EXISTING SHOULDERS	AGGREGATE SHOULDERS, TYPE B	HOT-MIX ASPHALT SHOULDERS, 8"	SHOULDER RUMBLE STRIPS
			-	FEET	UNIT	TON	SQ YD	FOOT
48+29	TO	305+97	LT	25768	252.6	1278.6	11226.3	24564.8
49+25	TO	305+97	RT	25672	252.4	1277.7	11219.2	24903.7
305+97	TO	346+23	LT/RT	4026	BRIDGE OMISSION			
346+23	TO	405+60	LT/RT	5937	118.7	601.0	5277.3	11445.7
405+60	TO	412+99	LT/RT	739	BRIDGE OMISSION			
412+99	TO	420+08	LT/RT	709	14.2	71.8	630.2	1418.0
TOTALS					638	3229	28353.0	62332.2

PAVEMENT MARKING SCHEDULE

STATION TO STATION			LENGTH	PAINT PAVEMENT MARKING - LINE 4"
			FEET	FOOT
48+29	TO	305+97	25768	58610.7
305+97	TO	346+23	4026	OMISSION
346+23	TO	405+60	5937	13358.3
405+60	TO	412+99	739	OMISSION
412+99	TO	420+00	701	1595.3
TOTALS				73564



AGGREGATE ENTRANCE AND SIDE ROAD DETAIL



HOT-MIX ASPHALT ENTRANCE AND SIDE ROAD DETAIL

1. THE COST OF THE SURFACE REMOVAL, 2" AND THE PAVEMENT REMOVAL FOR THE ENTRANCES AND PUBLIC ROAD APPROACHES SHALL BE INCLUDED IN THE PAY ITEM INCIDENTAL HOT-MIX ASPHALT SURFACING.
2. THE COST OF THE BITUMINOUS MATERIALS AND AGGREGATE (PRIME COAT) FOR THE ENTRANCES AND PUBLIC ROAD APPROACHES SHALL BE INCLUDED IN THE PAY ITEM INCIDENTAL HOT-MIX ASPHALT SURFACING.

ENTRANCE SCHEDULE

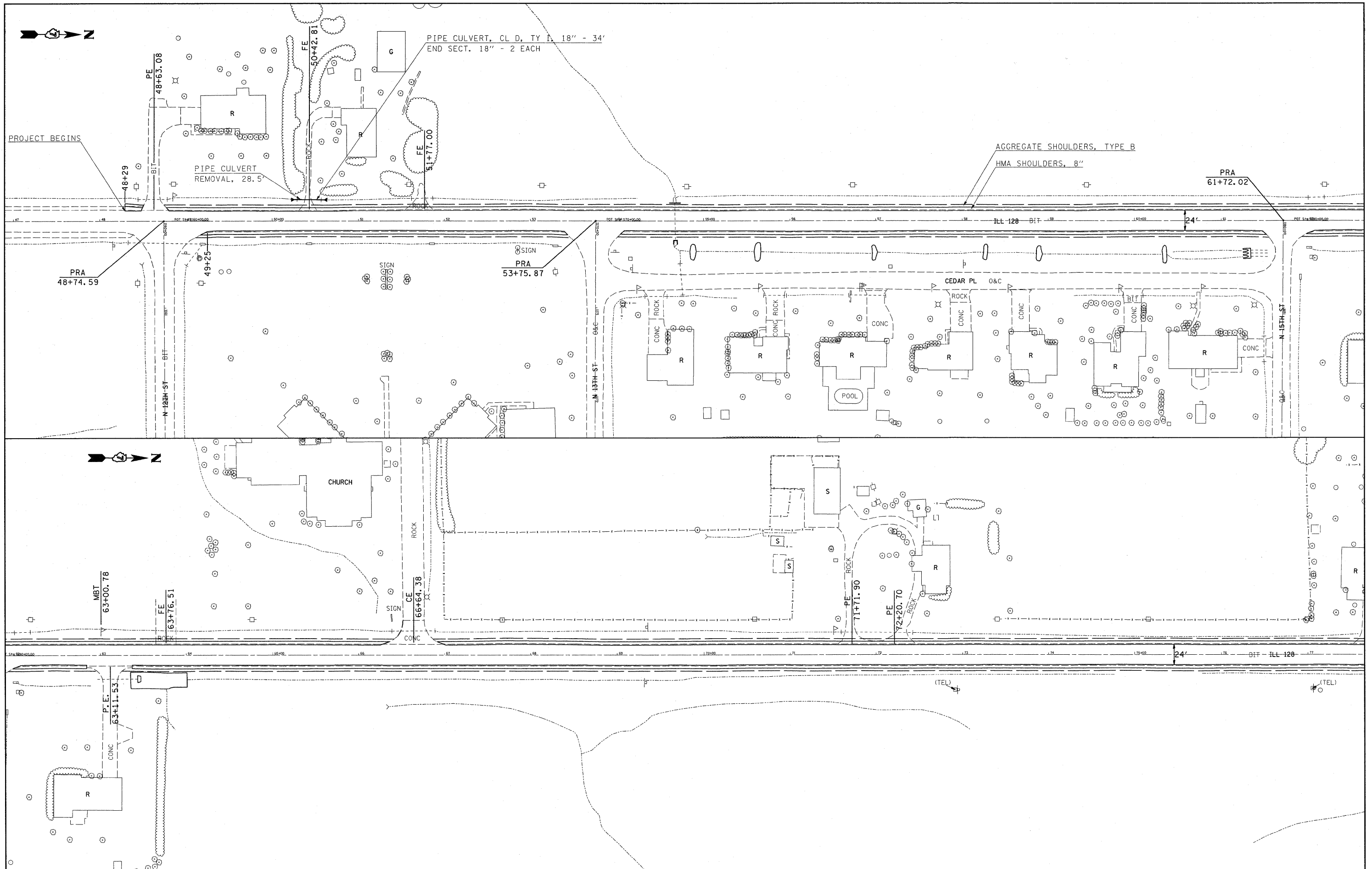
STATION	SIDE	TYPE	MATERIAL TYPE	AGGREGATE BASE COURSE	AGGREGATE SURFACE COURSE, TYPE B	AGGREGATE FOR TEMPORARY ACCESS	INCIDENTAL HOT-MIX ASPHALT SURFACING
				TON	TON	TON	TON
50+42.81	LT	PE	AGG	-	1.7	-	-
83+68.69	LT	FE	AGG	-	3.3	-	-
103+56.10	RT	FE	AGG	-	3.2	-	-
116+76.10	LT	FE	AGG	-	2.8	-	-
125+68.02	LT	PE	AGG	-	3.2	-	-
135+41.94	RT	FE	AGG	-	3.2	-	-
139+65.39	LT	FE	AGG	-	3.6	-	-
141+75.96	RT	FE	AGG	-	3.2	-	-
148+55.77	LT	FE	AGG	-	3.1	-	-
156+51.05	RT	FE	AGG	-	3.7	-	-
185+53.01	RT	FE	AGG	-	4.3	-	-
191+88.42	RT	FE	AGG	-	3.3	-	-
193+44.18	LT	PE	HMA	1.8	-	1.0	5
205+93.22	RT	FE	AGG	-	5.3	-	-
210+05.79	LT	FE	AGG	-	6.1	-	-
222+39.62	LT	PRA (1725 N)	HMA	2.3	-	1.2	7.3
222+46.38	RT	FE	AGG	-	3.5	-	-
234+22.94	RT	PRA (1750 N)	HMA	2.7	-	1.4	8.5
235+66.40	LT	PE	AGG	-	4.9	-	-
247+48.33	RT	FE	AGG	-	3.5	-	-
260+23.82	LT	FE	AGG	-	3.2	-	-
273+82.94	LT	FE	AGG	-	3.5	-	-
278+90.45	RT	FE	AGG	-	3.3	-	-
288+75.28	RT	FE	AGG	-	3	-	-
301+18.25	LT	FE	AGG	-	3.3	-	-
354+65.65	LT	FE	AGG	-	3.4	-	-
377+69.84	RT	PE	AGG	-	3.4	-	-
383+07.16	LT	PE	AGG	-	3.7	-	-
384+26.66	LT	FE	AGG	-	3.4	-	-
393+66.91	RT	FE	AGG	-	3.3	-	-
401+29.48	LT	FE	AGG	-	3.2	-	-
403+53.53	LT	FE	AGG	-	3.2	-	-
413+34.98	LT	FE	AGG	-	4.3	-	-
413+45.00	RT	FE	AGG	-	4.1	-	-
TOTALS				7	110	4	21

FILE NAME =	USER NAME = teasleyk	DESIGNED -	REVISED -
c:\pwork\pwork\teasleyk\d0239387\074504-shd-details.dgn		DRAWN -	REVISED -
PLOT SCALE = 50.0000 / 1 IN.		CHECKED -	REVISED -
PLOT DATE = 12/14/2010		DATE -	REVISED -

**STATE OF ILLINOIS
DEPARTMENT OF TRANSPORTATION**

ENTRANCE SCHEDULE AND DETAILS			
SCALE:	SHEET NO. OF SHEETS	STA. TO STA.	

F.A.P. RTE. 770	SECTION	COUNTY Shelby	TOTAL SHEETS 24	SHEET NO. 6
CONTRACT NO. 74504				
ILLINOIS FED. AID PROJECT				



FILE NAME = c:\pwork\pwork\teasleyck\d0239387\07

USER NAME = teasleyck
 4504-shr-plan.dgn
 PLOT SCALE = 50.0000 "/>

DESIGNED -
 DRAWN -
 CHECKED -
 DATE -

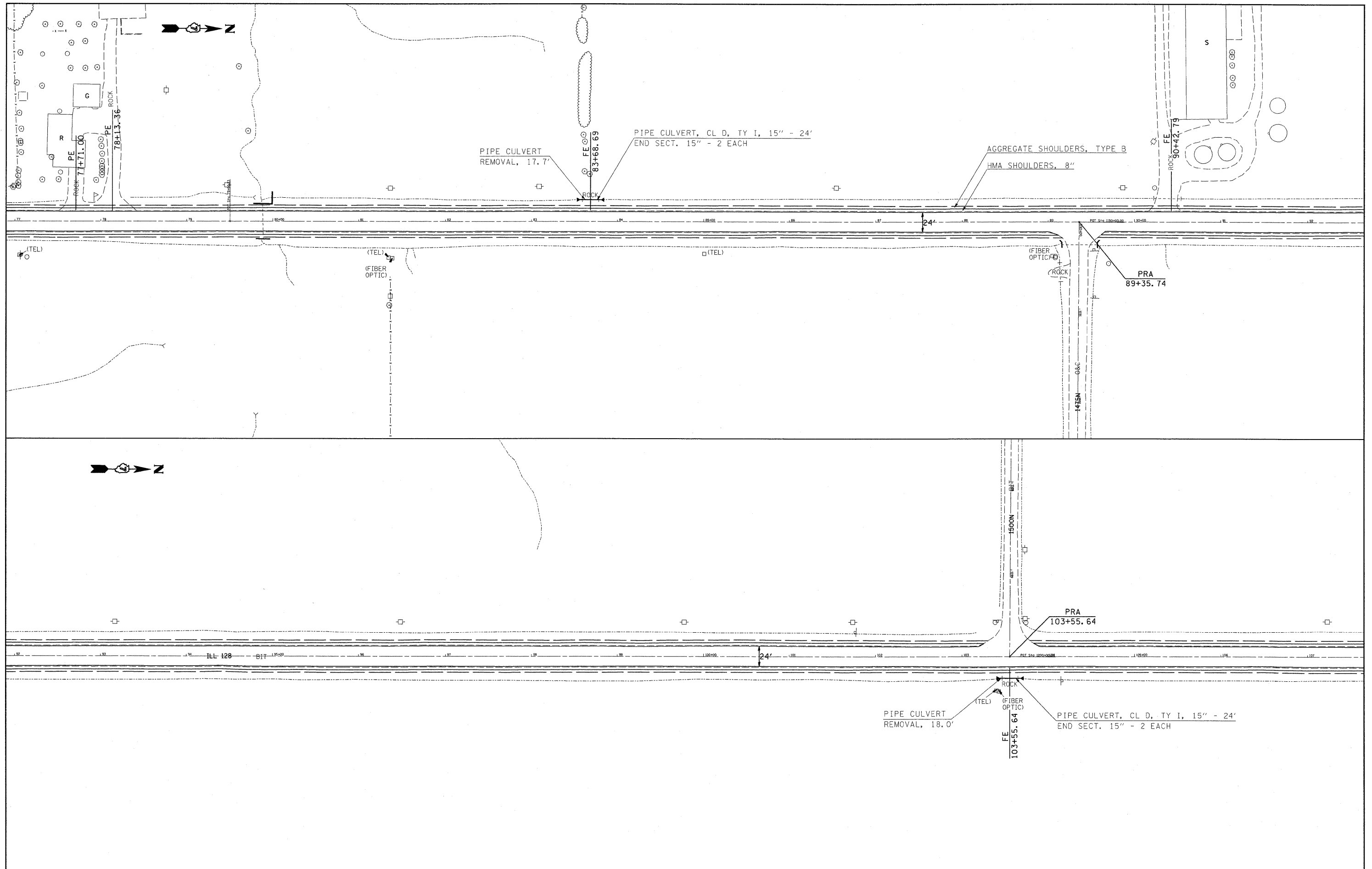
REVISED -
 REVISED -
 REVISED -
 REVISED -

**STATE OF ILLINOIS
 DEPARTMENT OF TRANSPORTATION**

**PLAN SHEET
 STA 47+00 TO 77+00**

SCALE: SHEET NO. OF SHEETS STA. TO STA.

F.A.P. RTE.	SECTION	COUNTY	TOTAL SHEETS	SHEET NO.
770		Shelby	24	7
CONTRACT NO. 74504				
ILLINOIS FED. AID PROJECT				



FILE NAME =
 c:\pwork\pwork\teasleyck\d0239387\074504-sht-plan.dgn

USER NAME = teasleyck
 DESIGNED -
 DRAWN -
 CHECKED -
 DATE -

DESIGNED -
 DRAWN -
 CHECKED -
 DATE -

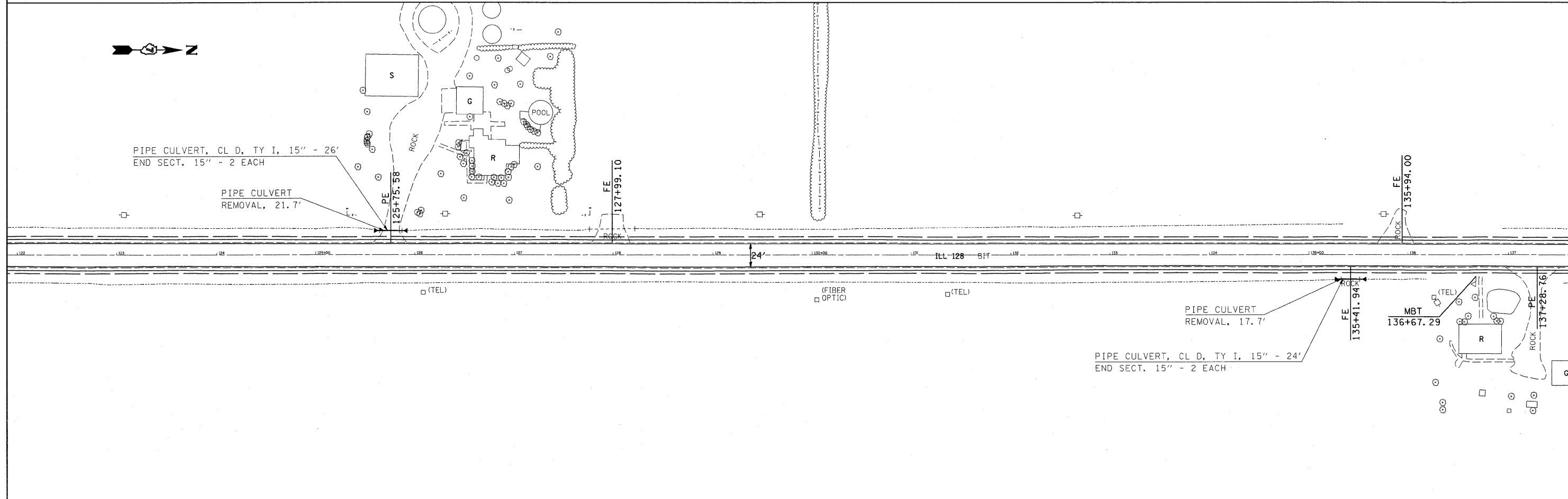
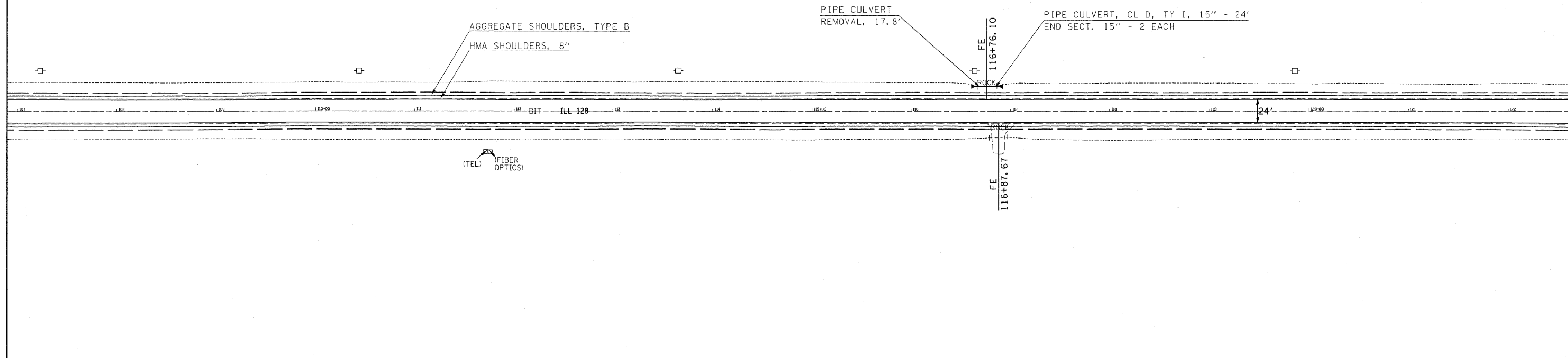
REVISED -
 REVISED -
 REVISED -
 REVISED -

**STATE OF ILLINOIS
 DEPARTMENT OF TRANSPORTATION**

**PLAN SHEET
 STA 77+00 TO 107+00**

SCALE: SHEET NO. OF SHEETS STA. TO STA.

F.A.P. RTE.	SECTION	COUNTY	TOTAL SHEETS	SHEET NO.
770		Shelby	24	8
CONTRACT NO. 74504				
ILLINOIS FED. AID PROJECT				

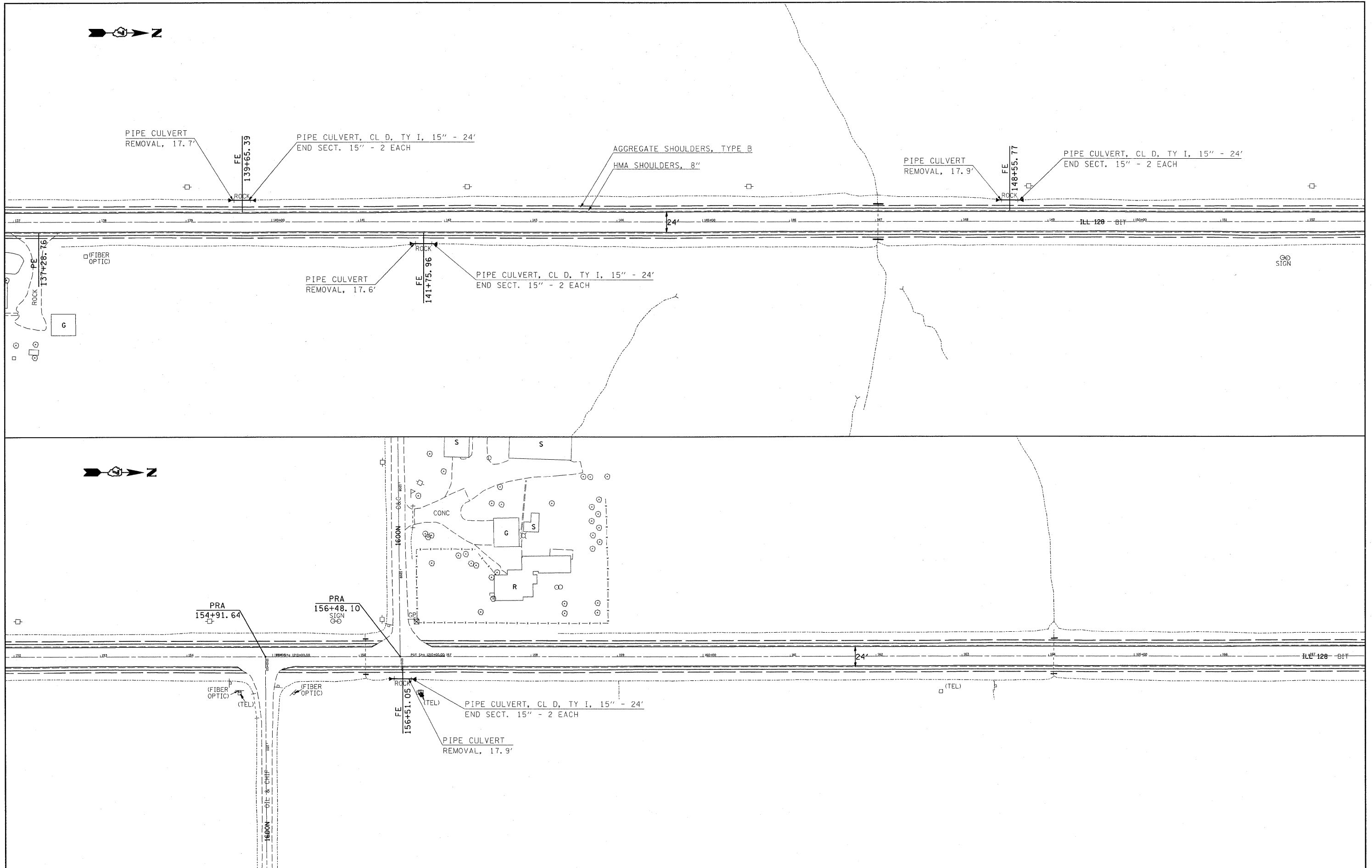


FILE NAME =	USER NAME = teasleyck	DESIGNED -	REVISED -
c:\pwork\pwidot\teasleyck\d8239387\07	4504-sh-t-plan.dgn	DRAWN -	REVISED -
	PLOT SCALE = 50.0000' / IN.	CHECKED -	REVISED -
	PLOT DATE = 12/14/2010	DATE -	REVISED -

**STATE OF ILLINOIS
DEPARTMENT OF TRANSPORTATION**

PLAN SHEET			
STA 107+00 TO STA 137+00			
SCALE:	SHEET NO.	OF SHEETS	STA. TO STA.

F.A.P. RTE.	SECTION	COUNTY	TOTAL SHEETS	SHEET NO.
770	.	Shelby	24	9
CONTRACT NO. 74504				
ILLINOIS FED. AID PROJECT				



FILE NAME =
 c:\pw_work\pwork\teasleyck\d0239387\07

USER NAME = teasleyck
 4504-sh-t-plandgn
 PLOT SCALE = 50.0000 "/>

DESIGNED -
 DRAWN -
 CHECKED -
 DATE -

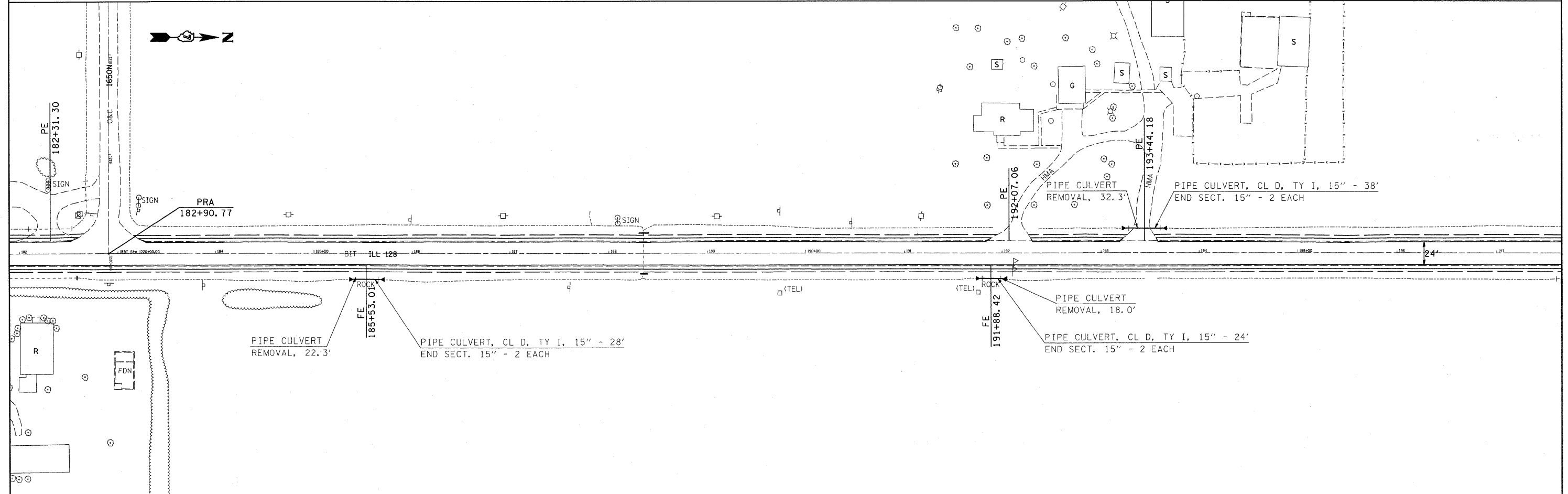
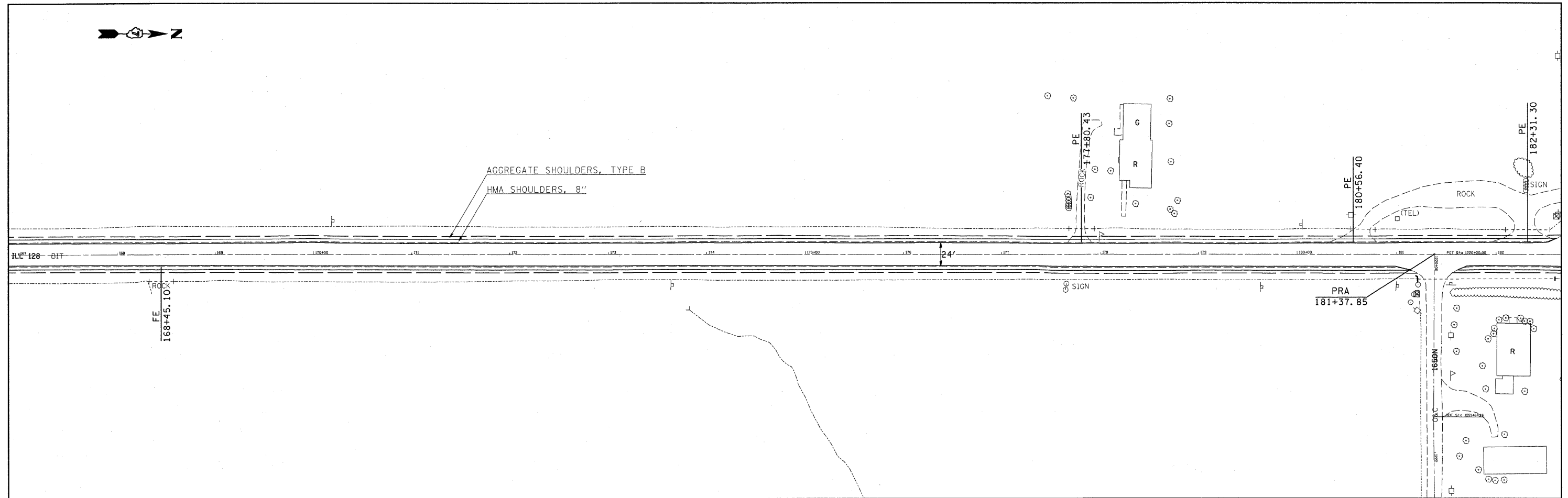
REVISED -
 REVISED -
 REVISED -
 REVISED -

**STATE OF ILLINOIS
 DEPARTMENT OF TRANSPORTATION**

**PLAN SHEET
 STA 137+00 TO 167+00**

SCALE: SHEET NO. OF SHEETS STA. TO STA.

F.A.P. RTE.	SECTION	COUNTY	TOTAL SHEETS	SHEET NO.
770		Shelby	24	10
CONTRACT NO. 74504				
ILLINOIS FED. AID PROJECT				



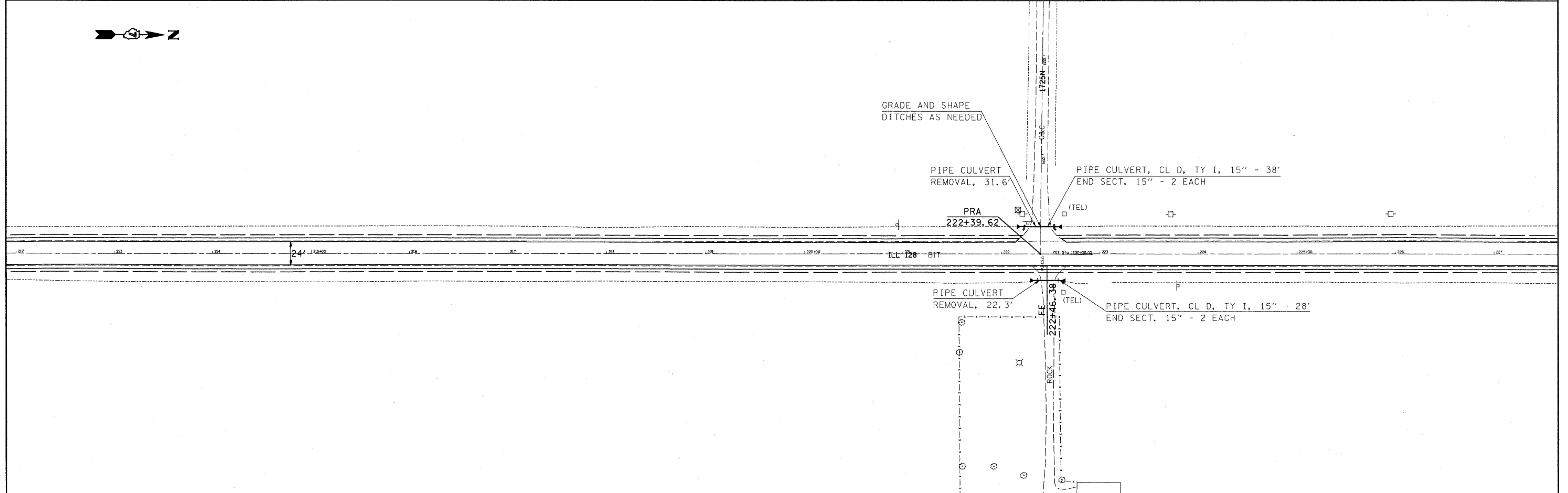
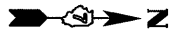
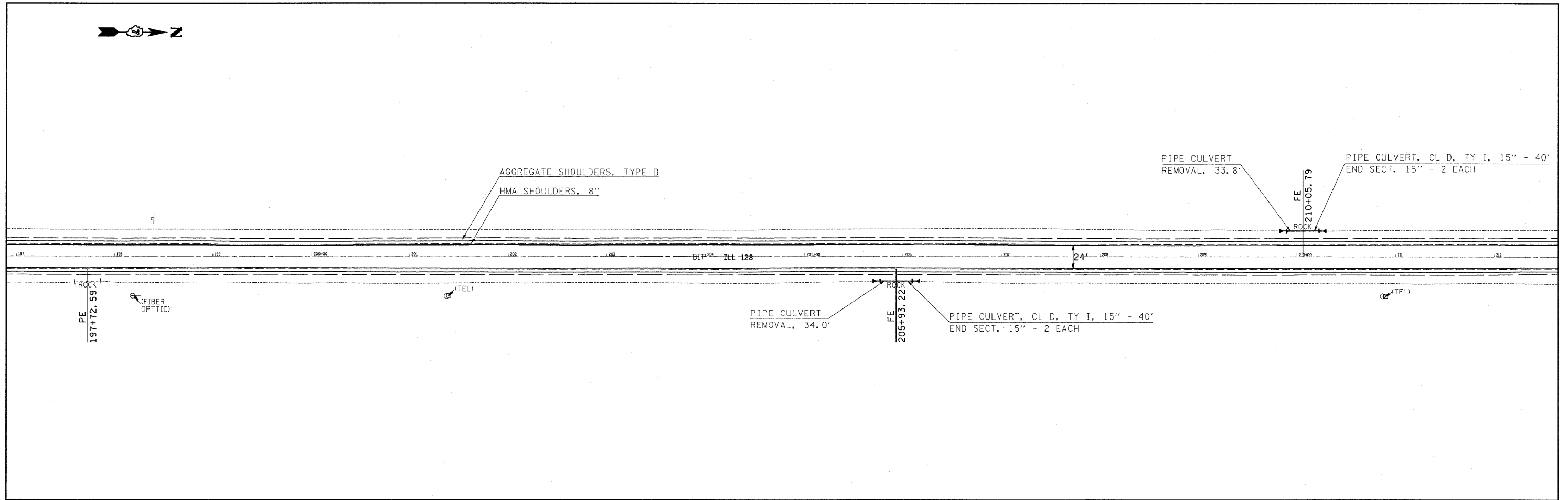
FILE NAME = c:\pwwork\pwwork\teasley\4584\4584-shr-plan.dgn
 USER NAME = teasleyck
 PLOT SCALE = 50.0000' / IN.
 PLOT DATE = 12/14/2010

DESIGNED -	REVISED -
DRAWN -	REVISED -
CHECKED -	REVISED -
DATE -	REVISED -

**STATE OF ILLINOIS
DEPARTMENT OF TRANSPORTATION**

PLAN SHEET			
STA 167+00 TO 197+00			
SCALE:	SHEET NO.	OF SHEETS	STA. TO STA.

F.A.P. RTE.	SECTION	COUNTY	TOTAL SHEETS	SHEET NO.
770		Shelby	24	11
CONTRACT NO. 74504				
ILLINOIS FED. AID PROJECT				

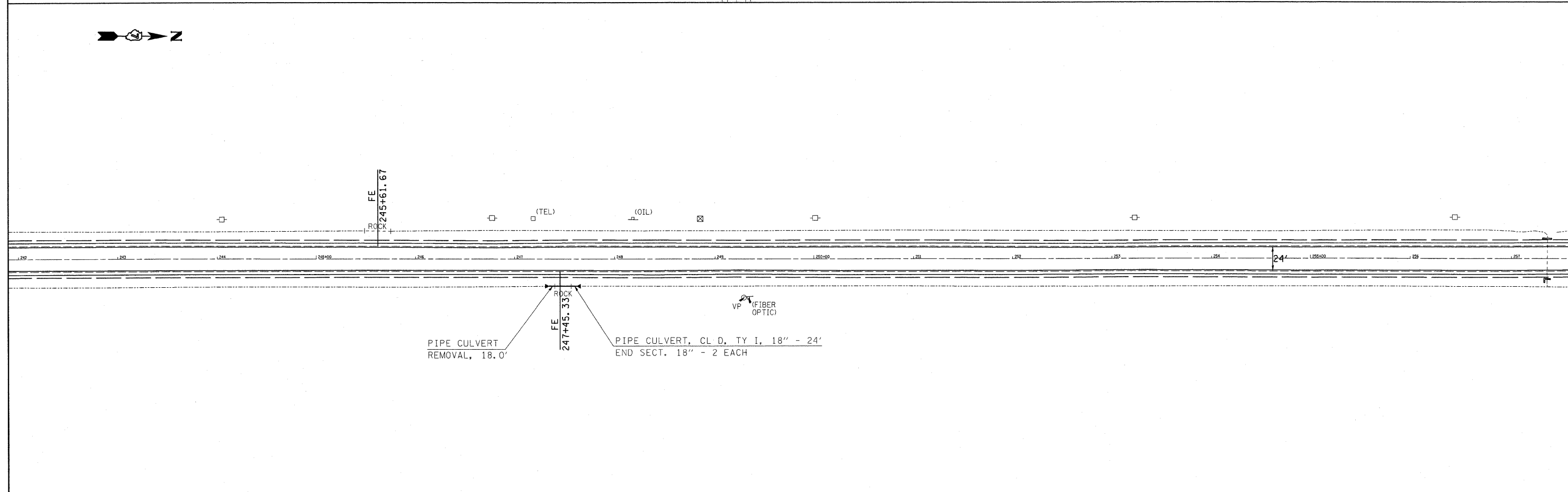
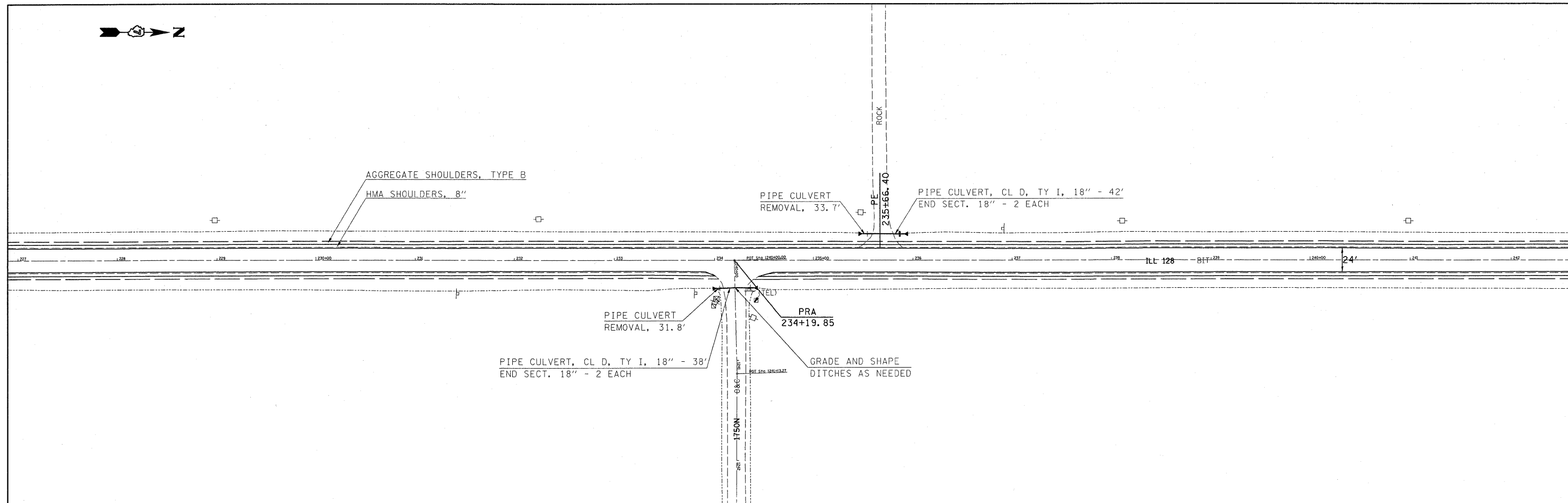


FILE NAME =	USER NAME = teaslegck	DESIGNED -	REVISED -
c:\pwork\pwork\teaslegck\d0239307\07	4504-sh1-p1en.dgn	DRAWN -	REVISED -
	PLOT SCALE = 50,000 / IN.	CHECKED -	REVISED -
	PLOT DATE = 12/14/2010	DATE -	REVISED -

**STATE OF ILLINOIS
DEPARTMENT OF TRANSPORTATION**

PLAN SHEET			
STA 197+00 TO 227+00			
SCALE:	SHEET NO.	OF SHEETS	STA. TO STA.

F.A.P. RTE.	SECTION	COUNTY	TOTAL SHEETS	SHEET NO.
770	.	Shelby	24	12
CONTRACT NO. 74504				
ILLINOIS FED. AID PROJECT				



FILE NAME = c:\pw_work\pwidot\teasleyck\d0239387\07

USER NAME = teasleyck
4504-sh-t-plan.dgn

DESIGNED -
DRAWN -

REVISED -
REVISED -
REVISED -
REVISED -

**STATE OF ILLINOIS
DEPARTMENT OF TRANSPORTATION**

**PLAN SHEET
STA 227+00 TO 257+00**

F.A.P. RTE. 770	SECTION .	COUNTY Shelby	TOTAL SHEETS 24	SHEET NO. 13
CONTRACT NO. 74504				



PIPE CULVERT, CL D, TY I, 15" - 28'
END SECT. 15" - 2 EACH

PIPE CULVERT
REMOVAL, 22.2'

FE
260+23.82

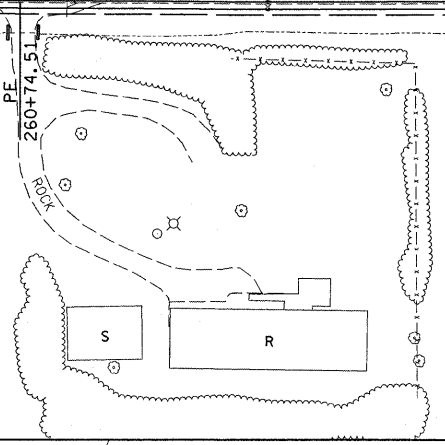
18000
0.6%

(TEL)
PRA
262+04.88

AGGREGATE SHOULDERS, TYPE B
HMA SHOULDERS, 8"

24'

ILL-120



PIPE CULVERT
REMOVAL, 18.2'

FE
273+82.94

PIPE CULVERT, CL D, TY I, 18" - 24'
END SECT. 18" - 2 EACH

CONC

PIPE CULVERT
REMOVAL, 22.1'

FE
278+90.45

PIPE CULVERT, CL D, TY I, 15" - 28'
END SECT. 15" - 2 EACH

24'

(TEL)

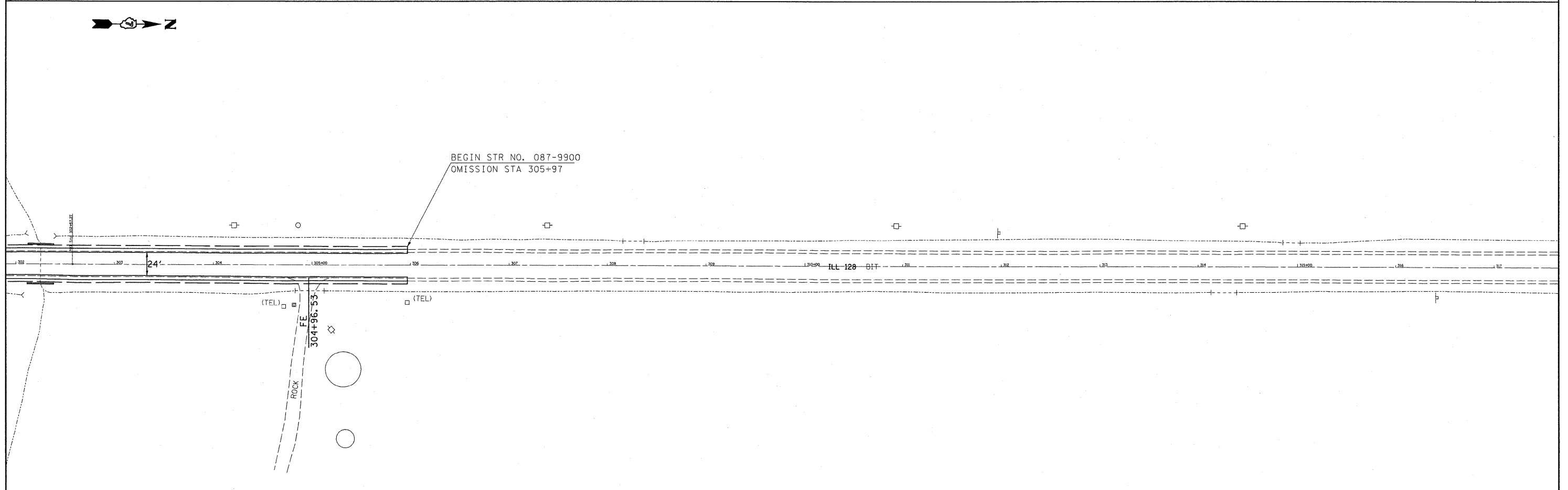
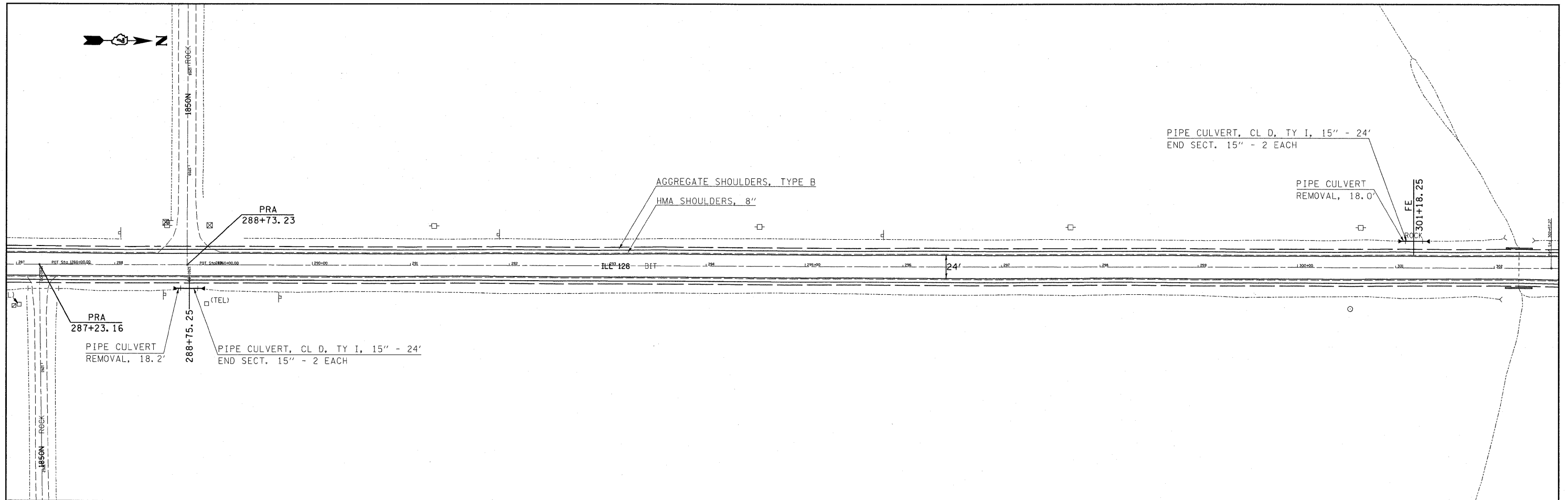
28

FILE NAME =	USER NAME = teasleyk	DESIGNED -	REVISED -
ca\pv_work\pvidot\teasleyk\d0239387\07	4504-sht-plan.dgn	DRAWN -	REVISED -
	PLOT SCALE = 50.0000 / / IN.	CHECKED -	REVISED -
	PLOT DATE = 12/14/2010	DATE -	REVISED -

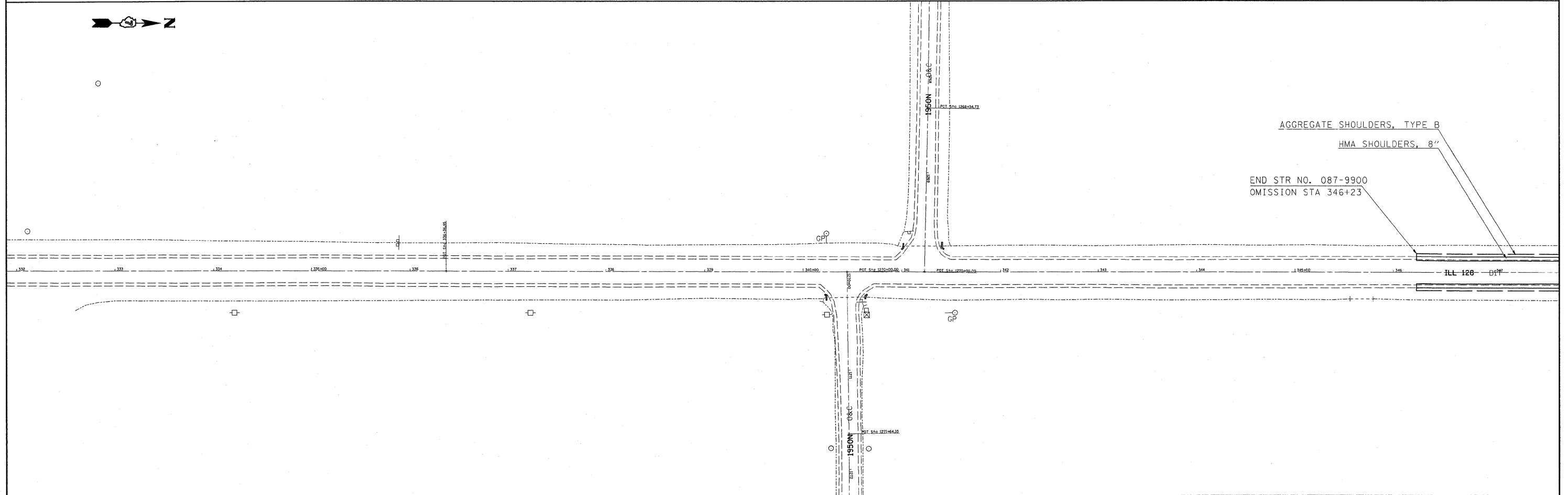
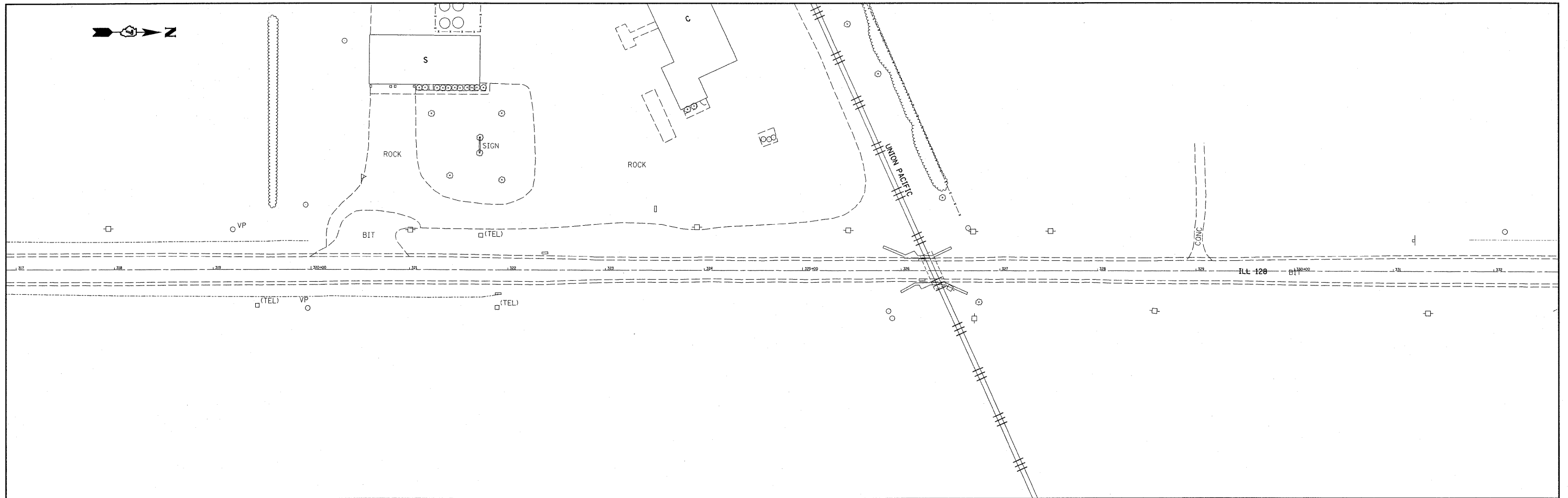
STATE OF ILLINOIS
DEPARTMENT OF TRANSPORTATION

PLAN SHEET			
STA 257+00 TO 287+00			
SCALE:	SHEET NO.	OF SHEETS	STA. TO STA.

F.A.P. RTE.	SECTION	COUNTY	TOTAL SHEETS	SHEET NO.
770	*	Shelby	24	14
CONTRACT NO. 74504				
ILLINOIS FED. AID PROJECT				



FILE NAME =	USER NAME = teasleyck	DESIGNED -	REVISED -	STATE OF ILLINOIS DEPARTMENT OF TRANSPORTATION	PLAN SHEET STA 287+00 TO 317+00				F.A.P. RTE.	SECTION	COUNTY	TOTAL SHEETS	SHEET NO.
c:\pwwork\pwwork\teasleyck\d8239387\07	4504-sh1-plan.dgn	DRAWN -	REVISED -		770		Shelby	24	15				
	PLOT SCALE = 50,0000 ' / IN.	CHECKED -	REVISED -		CONTRACT NO. 74504				ILLINOIS FED. AID PROJECT				
	PLOT DATE = 12/14/2010	DATE -	REVISED -		SCALE:	SHEET NO.	OF SHEETS	STA.	TO STA.				



FILE NAME = c:\pwork\pwork\dot\teasleyck\d8239387\07

USER NAME = teasleyck
 4504-sht-plan.dgn
 PLOT SCALE = 50.0000 ' / IN.
 PLOT DATE = 12/14/2010

DESIGNED -
 DRAWN -
 CHECKED -
 DATE -

REVISED -
 REVISED -
 REVISED -
 REVISED -

**STATE OF ILLINOIS
 DEPARTMENT OF TRANSPORTATION**

**PLAN SHEET
 STA 317+00 TO STA 347+00**

SCALE: SHEET NO. OF SHEETS STA. TO STA.

F.A.P. RTE.	SECTION	COUNTY	TOTAL SHEETS	SHEET NO.
770		Shelby	24	16
CONTRACT NO. 74504				
ILLINOIS FED. AID PROJECT				



PIPE CULVERT
REMOVAL, 18.1'

FE
ROCK
354+65.65

PIPE CULVERT, CL D, TY I, 15" - 24'
END SECT. 15" - 2' EACH

AGGREGATE SHOULDERS, TYPE B
HMA SHOULDERS, 8"

1348 1349 1350+00 1351 24' 1352 1353 1354 1355+00 1356 1357 1358 1359 1360+00 1361 1362



FE
ROCK
367+26.62

FE
ROCK
374+30.00

1362 1363 1364 ILL 128 00 BIT 1365 1366 1367 1368 1369 1370+00 1371 24' 1372 1373 1374 1375+00 1376 1377

FILE NAME =
c:\pw_work\pwidot\teasley\0239387\07

USER NAME = teasleyck
4504-sh-t-plan.dgn

DESIGNED -
DRAWN -
CHECKED -
DATE -

REVISED -
REVISED -
REVISED -
REVISED -

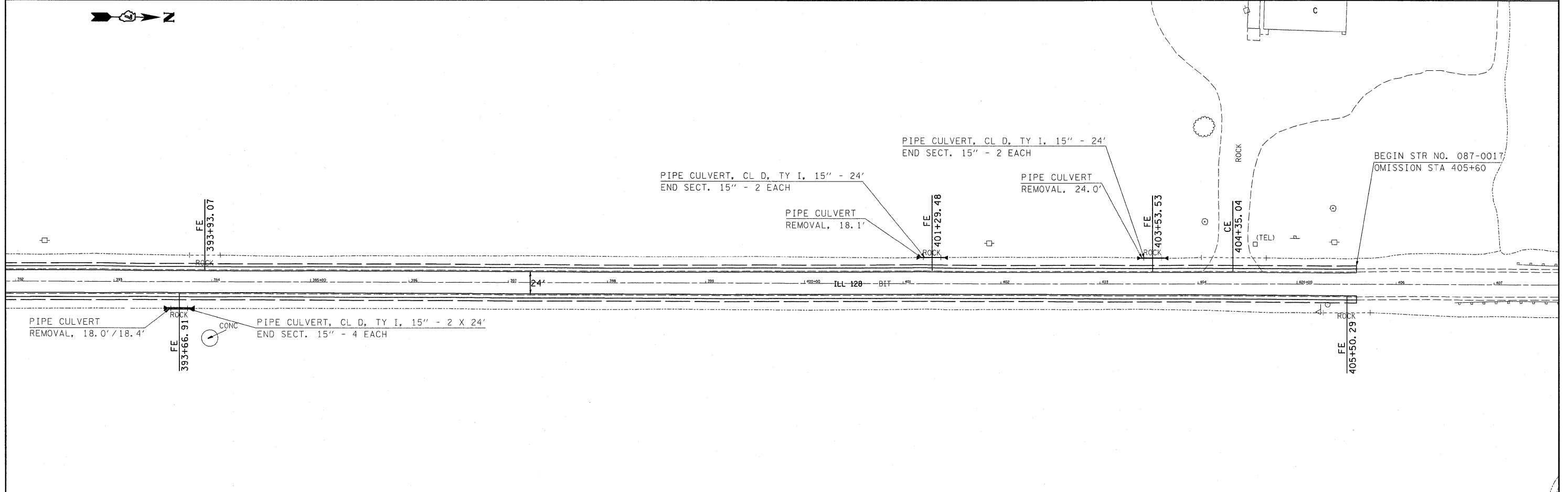
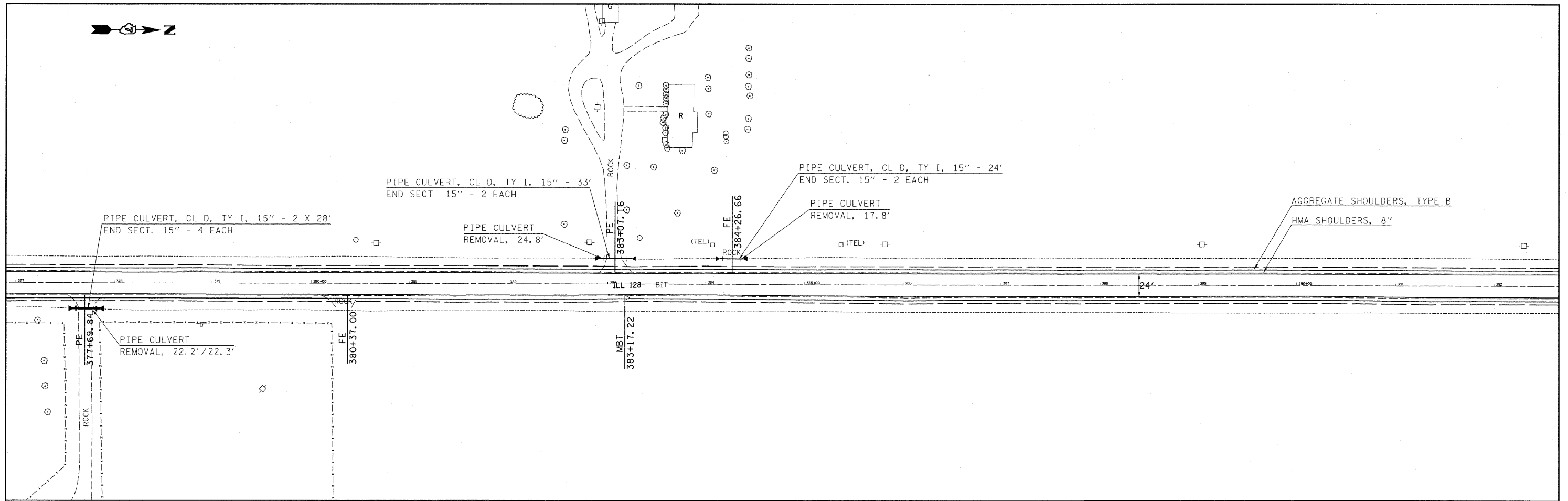
STATE OF ILLINOIS
DEPARTMENT OF TRANSPORTATION

PLAN SHEET
STA 347+00 TO STA 377+00

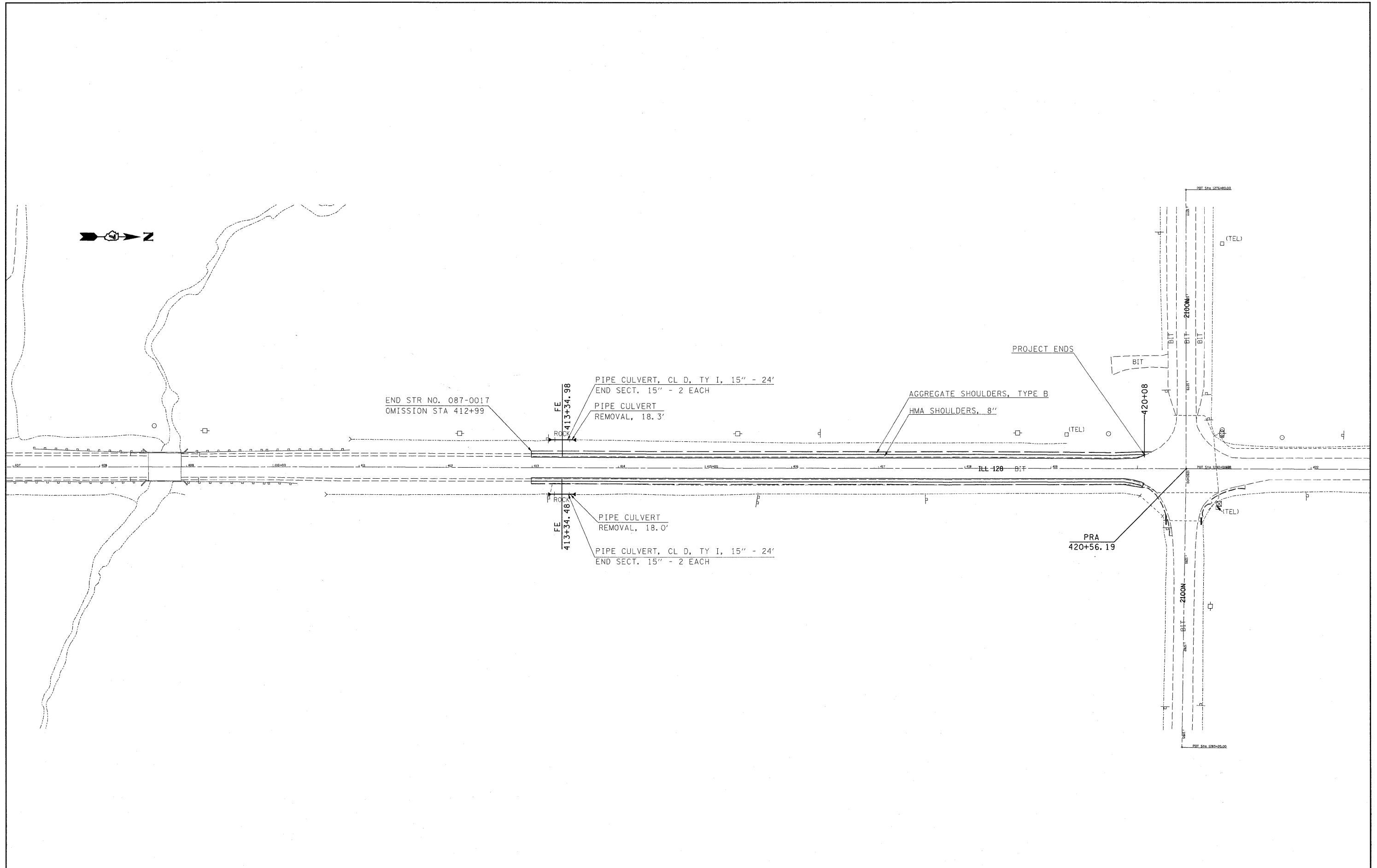
SCALE: SHEET NO. OF SHEETS STA. TO STA.

F.A.P. RTE. 770 SECTION COUNTY Shelby TOTAL SHEETS 24 SHEET NO. 17

ILLINOIS FED. AID PROJECT CONTRACT NO. 74504



FILE NAME = a:\pwork\pwork\pwork\teasleyck\8239387\07	USER NAME = teasleyck	DESIGNED -	REVISED -	STATE OF ILLINOIS DEPARTMENT OF TRANSPORTATION	PLAN SHEET STA 377+00 TO STA 407+00			F.A.P. RTE. 770	SECTION .	COUNTY Shelby	TOTAL SHEETS 24	SHEET NO. 18
	PLOT SCALE = 50,0000' / IN.	CHECKED -	REVISED -		SCALE:	SHEET NO.	OF SHEETS	STA. TO STA.	CONTRACT NO. 74504 ILLINOIS FED. AID PROJECT			
PLOT DATE = 12/14/2010	DATE -	REVISED -	REVISED -									



FILE NAME =
 c:\pwork\pwork\teasleyck\d0239387\07

USER NAME = teasleyck
 4504-shrplan.dgn
 PLOT SCALE = 50.0000' / IN.
 PLOT DATE = 12/14/2010

DESIGNED -
 DRAWN -
 CHECKED -
 DATE -

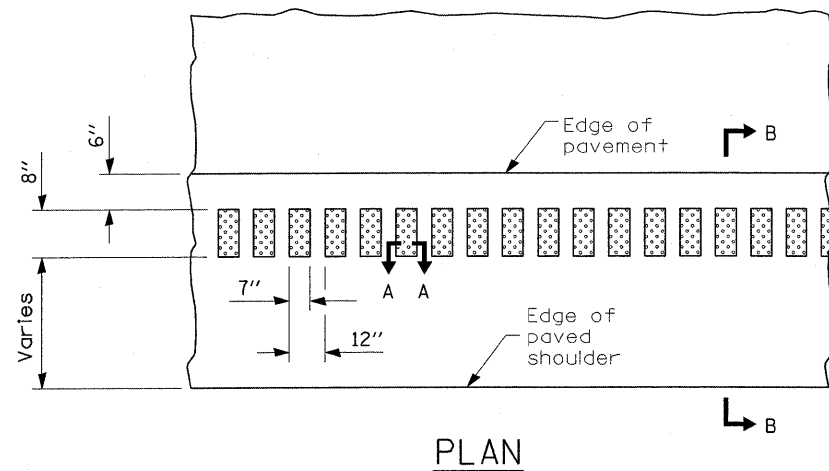
REVISED -
 REVISED -
 REVISED -
 REVISED -

**STATE OF ILLINOIS
 DEPARTMENT OF TRANSPORTATION**

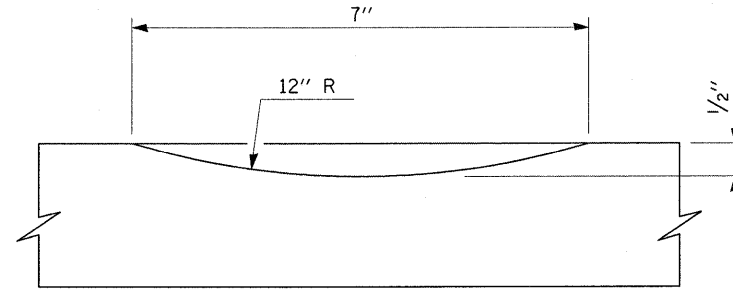
**PLAN SHEET
 407+00 TO STA 422+00**

SCALE: SHEET NO. OF SHEETS STA. TO STA.

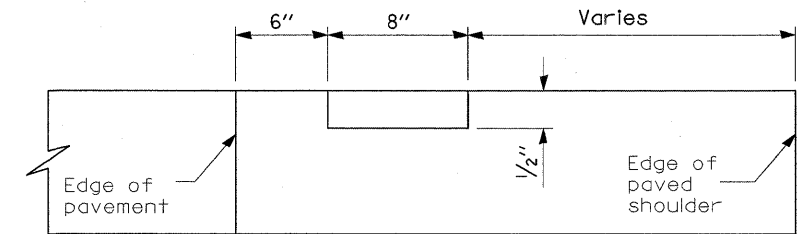
F.A.P. RTE.	SECTION	COUNTY	TOTAL SHEETS	SHEET NO.
770	•	Shelby	24	19
CONTRACT NO. 74504				
ILLINOIS FED. AID PROJECT				



PLAN



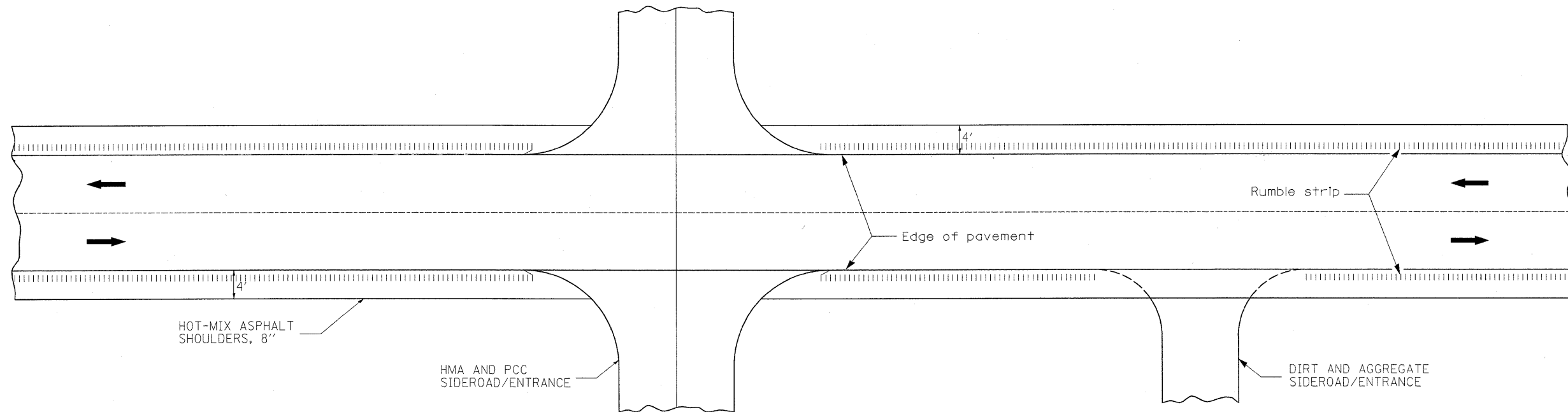
SECTION A-A



SECTION B-B

NOTE: OMIT RUMBLE STRIPS ON ALL SIDEROADS, PRIVATE AND COMMERCIAL ENTRANCES AT RADIUS RETURNS. OMIT RUMBLE STRIPS AT MAILBOX TURNOUTS 60' BOTH SIDES OF THE MAILBOX OR AS DETERMINED BY THE ENGINEER. RUMBLE STRIPS SHALL NOT BE OMITTED ON FIELD ENTRANCES.

OMIT HOT-MIX ASPHALT SHOULDERS, 8" ON ALL HMA AND PCC SIDEROADS, ENTRANCES, AND CONCRETE GUTTER LOCATIONS.



TYPICAL APPLICATION AT SIDEROADS AND ENTRANCES

FILE NAME =
c:\pw_work\pwidot\teasleyk\d2239387\07

USER NAME = teasleyk
4504-sht-details.dgn

DESIGNED -
DRAWN -

REVISED -
REVISED -

PLOT SCALE = 50.0000' / IN.
PLOT DATE = 12/14/2010

CHECKED -
DATE -

REVISED -
REVISED -

STATE OF ILLINOIS
DEPARTMENT OF TRANSPORTATION

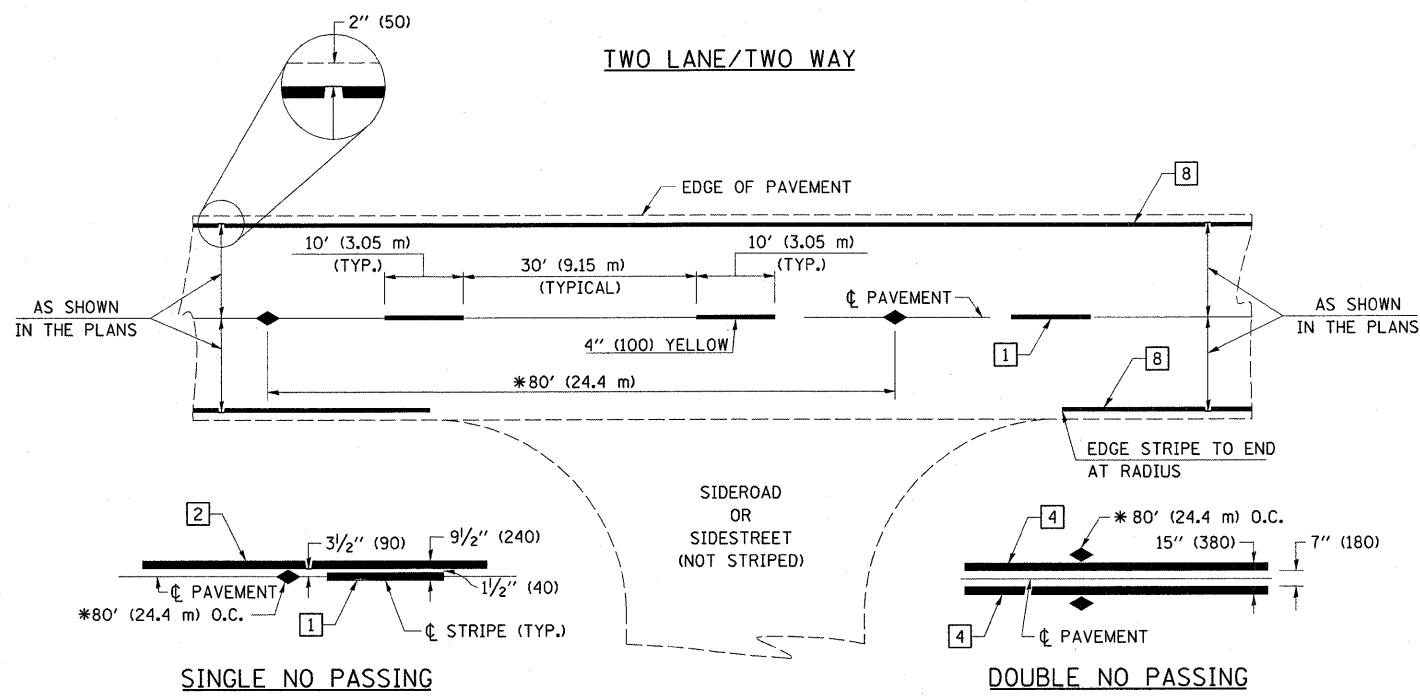
RUMBLE STRIP & HMA SHOULDER DETAIL

SCALE: SHEET NO. OF SHEETS STA. TO STA.

F.A.P. RTE.	SECTION	COUNTY	TOTAL SHEETS	SHEET NO.
770		Shelby	24	20

CONTRACT NO. 74504

ILLINOIS FED. AID PROJECT



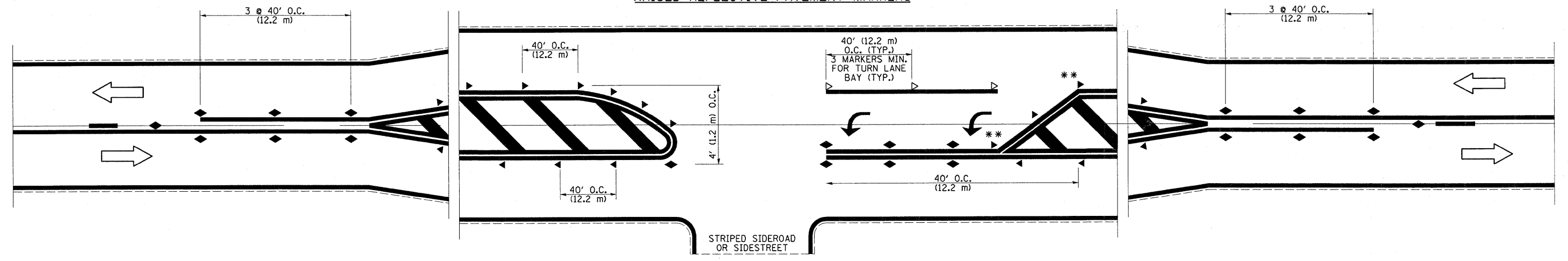
PAVEMENT MARKING LEGEND

- 1 4" (100) SKIP-DASH (YELLOW)
- 2 4" (100) SOLID (YELLOW)
- 3 12" (300) DIAGONAL (YELLOW)
- 4 4" (100) DOUBLE YELLOW (NARROW)
- 5 RESERVED
- 6 RESERVED
- 7 6" (150) SKIP-DASH (WHITE)
- 8 4" (100) SOLID (WHITE)
- 9 12" (300) DIAGONAL (WHITE)
- 10 6" (150) SOLID (WHITE)
- 11 24" (600) STOP BAR (WHITE)
- 12 8" (200) SOLID (WHITE)
- 13 6" (100) LANE LINE EXTENSIONS
- 14 4" (100) PARKING WHITE

TYPICAL PAVEMENT MARKERS LEGEND

- ◆ TWO-WAY AMBER MARKER
- ▶ ONE-WAY AMBER MARKER
- ▷ ONE-WAY CRYSTAL MARKER

RAISED REFLECTIVE PAVEMENT MARKERS



** REDUCE SPACING IF NECESSARY TO ASSURE MARKERS AT CORNER POINTS.

NOT TO SCALE
 Note: All dimensions are in INCHES (millimeters) unless otherwise shown.

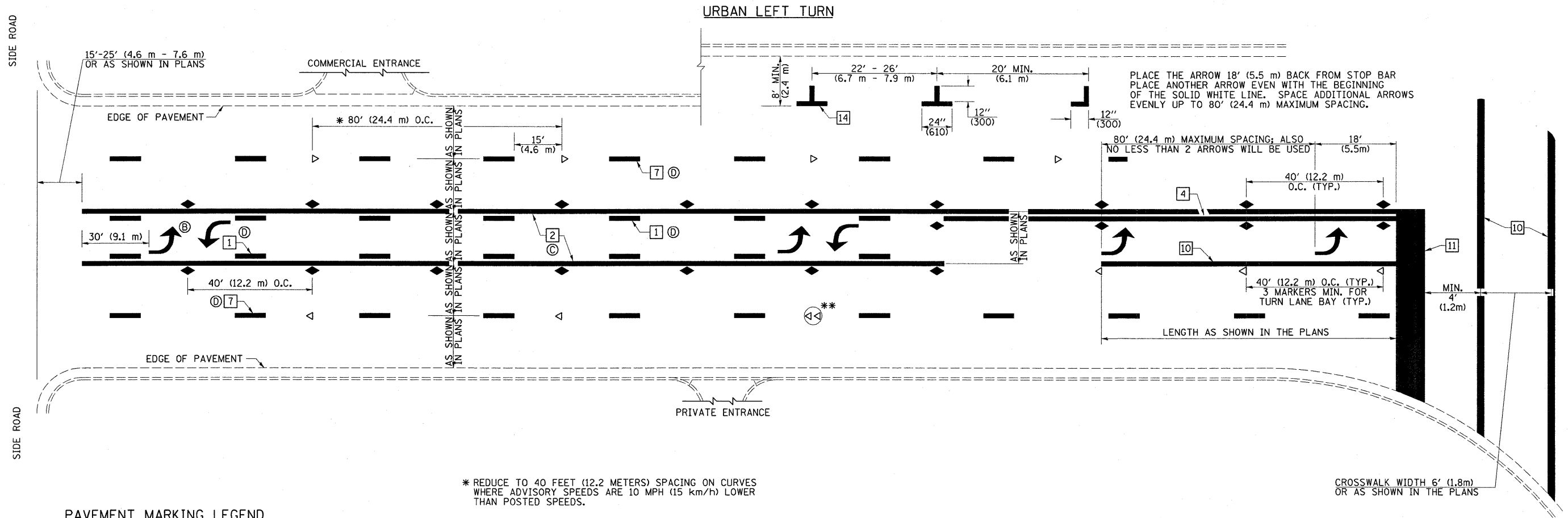
DISTRICT 7 DETAIL NO. 7800001

FILE NAME =	USER NAME = teasleyck	DESIGNED -	REVISED -
cr\pw_work\pwsdot\teasleyck\d0239387\07	4504-sh-t-detail.sldgn	DRAWN -	REVISED -
	PLOT SCALE = 50.0000 // IN.	CHECKED -	REVISED -
	PLOT DATE = 12/14/2010	DATE -	REVISED -

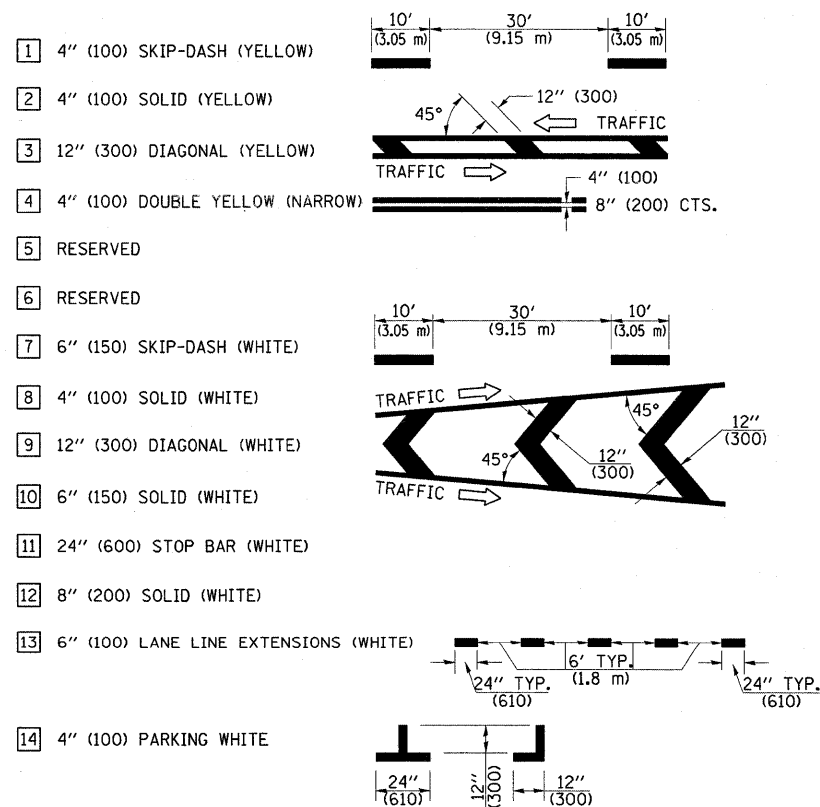
**STATE OF ILLINOIS
 DEPARTMENT OF TRANSPORTATION**

**PAVEMENT MARKING AND RAISED REFLECTIVE PAVEMENT MARKERS
 (RURAL & URBAN APPLICATIONS)**

F.A.P. RTE.	SECTION	COUNTY	TOTAL SHEETS	SHEET NO.
770	.	Shelby	24	21
CONTRACT NO. 74504				
ILLINOIS FED. AID PROJECT				



PAVEMENT MARKING LEGEND

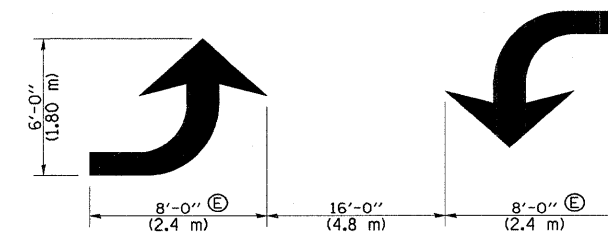
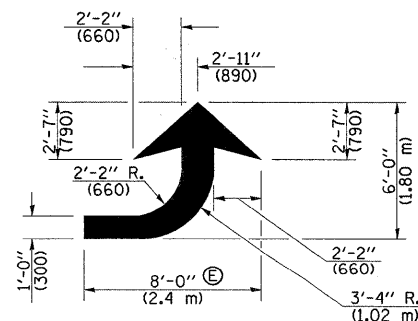
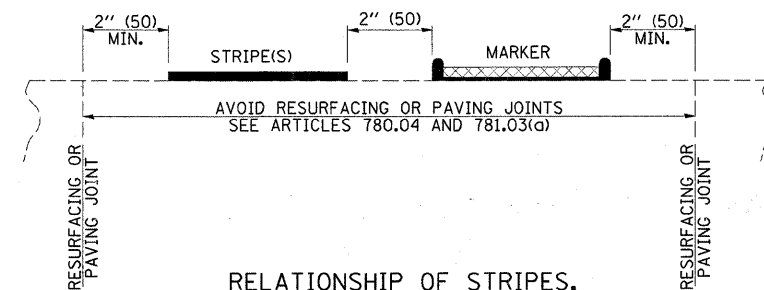


* REDUCE TO 40 FEET (12.2 METERS) SPACING ON CURVES WHERE ADVISORY SPEEDS ARE 10 MPH (15 km/h) LOWER THAN POSTED SPEEDS.

** DOUBLE LANE LINE MARKERS SHALL BE SPECIFIED AND SPACED AS SHOWN IN HIGHWAY STANDARD 781001 FOR MULTI-LANE DIVIDED AND UNDIVIDED HIGHWAYS.

GENERAL NOTES

- ⓑ TURN ARROW PAIRS SHALL BE PLACED AT 250' (75 m) INTERVALS AND SHALL BE EVENLY SPACED BETWEEN BOTH ENDS OF THE BIDIRECTIONAL LEFT TURN LANE. USE A MINIMUM OF TWO PAIRS PER BLOCK.
- ⓒ THE SOLID YELLOW PAVEMENT MARKINGS ② SHOULD GENERALLY START OR END NEAR THE RADIUS POINT OF EACH STREET RETURN EXCEPT WHERE ONE OR BOTH ENDS WOULD INCLUDE STOP BARS.
- ⓓ THE SKIP-DASH PAVEMENT MARKINGS ① OR ⑦ SHOULD BE CENTERED BETWEEN BOTH ENDS OF EACH CITY BLOCK AND SHALL BE PLACED SO THEY LINE UP ACROSS FROM EACH OTHER.
- ⓔ USE LARGE ARROW SIZE FOR BOTH RURAL AND URBAN LOCATIONS. (SEE LAST PAGE OF SECTION 780X FOR SYMBOLS TABLE)



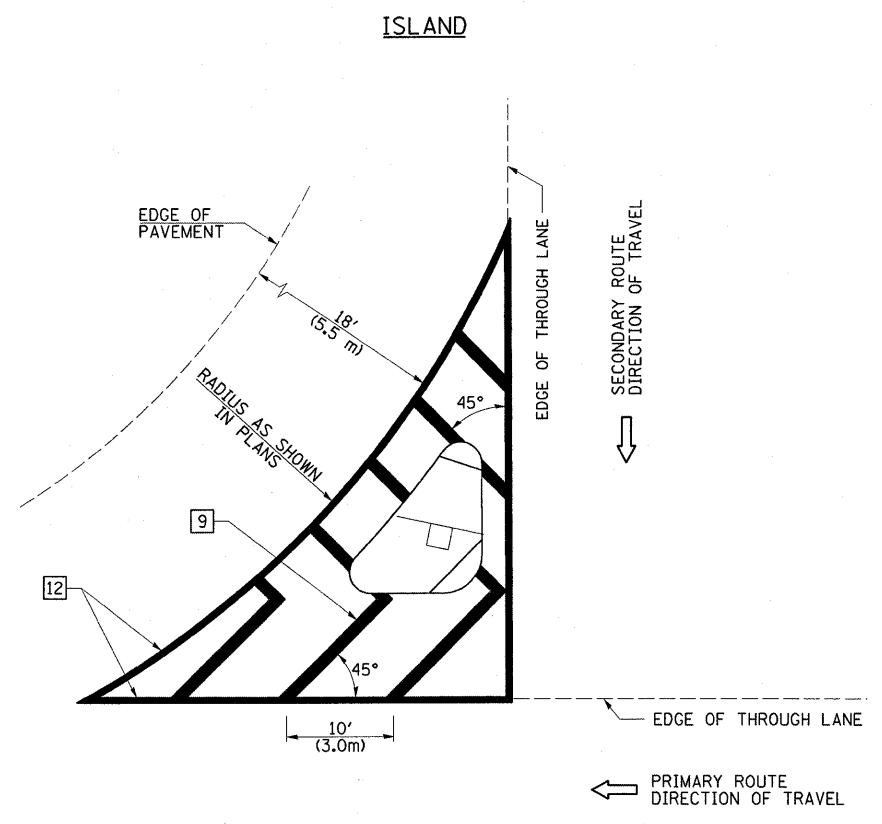
LEFT ARROW
REVERSE FOR RIGHT ARROW
AREA = 15.6 SQ. FT. (1.47 m²)
(WHITE)

TYPICAL DOUBLE TURN ARROWS (WHITE)

NOT TO SCALE

Note: All dimensions are in INCHES (millimeters) unless otherwise shown.

FILE NAME =	USER NAME = teasleyek	DESIGNED -	REVISED -	STATE OF ILLINOIS DEPARTMENT OF TRANSPORTATION	PAVEMENT MARKING AND RAISED REFLECTIVE PAVEMENT MARKERS (RURAL & URBAN APPLICATIONS)	F.A.P. RTE.	SECTION	COUNTY	TOTAL SHEETS	SHEET NO.	
c:\pw\work\pww\dot\teasleyek\d0239387\07	4504-sh1-details.dgn	DRAWN -	REVISED -			770	.	Shelby	24	22	
	PLOT SCALE = 50.0000 "/td> <td>CHECKED -</td> <td>REVISED -</td> <td colspan="6" style="text-align: center;">CONTRACT NO. 74504</td>	CHECKED -	REVISED -			CONTRACT NO. 74504					
	PLOT DATE = 12/14/2010	DATE -	REVISED -			ILLINOIS FED. AID PROJECT					

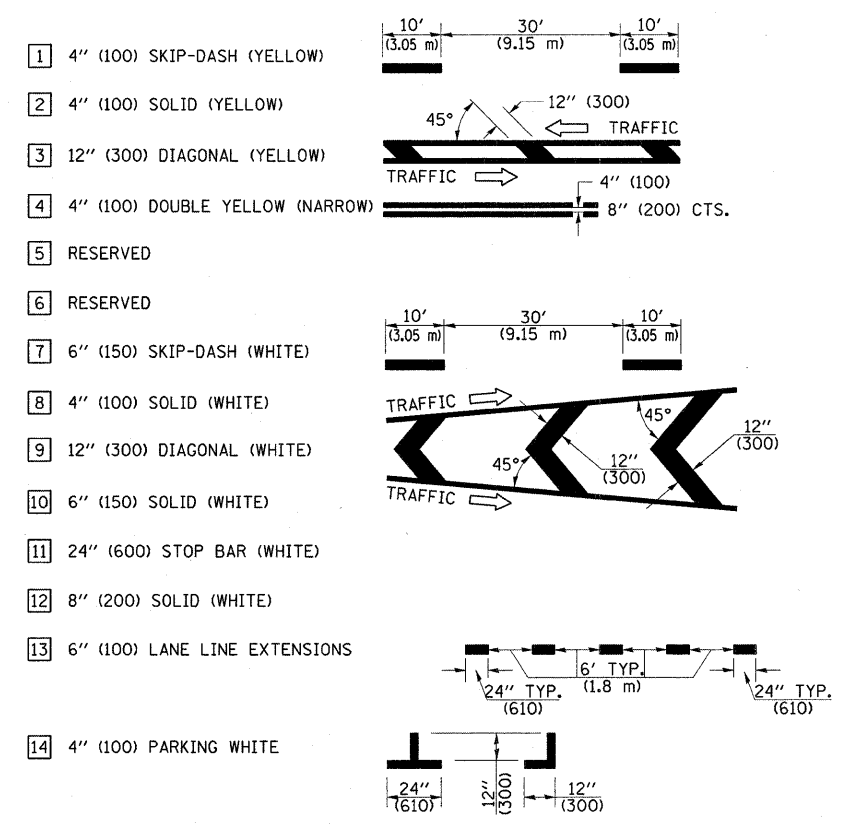


GENERAL NOTES

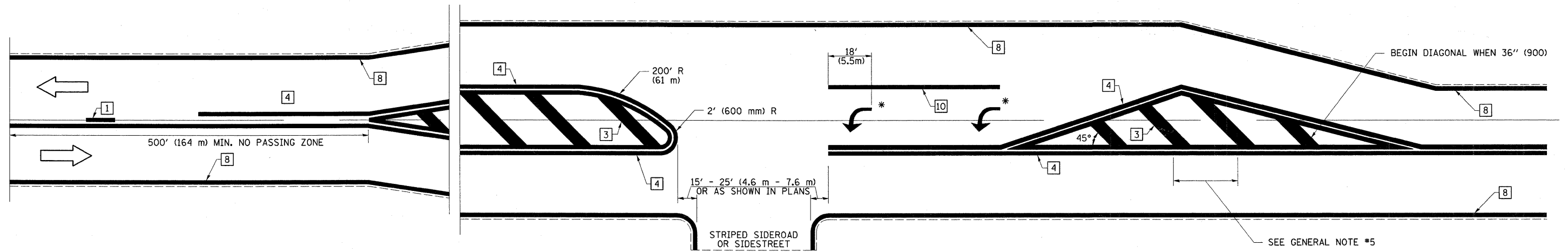
1. RAISED AND CORRUGATED MEDIANS SHALL BE OUTLINED WITH [2] IF PRESENT.
2. SOME OF THE INFORMATION INCLUDED WITH THIS DETAIL MAY NOT BE APPLICABLE TO THIS IMPROVEMENT.
3. PAVEMENT MARKINGS ARE TO BE EXTENDED THROUGH OMISSIONS WHEN APPLICABLE.
4. FINAL PAVEMENT MARKINGS SHALL BE IN PLACE PRIOR TO PLACING ANY RAISED REFLECTIVE PAVEMENT MARKERS.
5. THE FOLLOWING CRITERIA SHALL BE USED FOR SELECTING THE DIAGONAL PAVEMENT MARKING SPACING:

< 30 MPH (< 50 km/h)	15' (4.5 m)
30-45 MPH (50-75 km/h)	20' (6.0 m)
> 45 MPH (> 75 km/h)	30' (9.0 m)

PAVEMENT MARKING LEGEND



RURAL LEFT TURN STRIPING



* PLACE AN ARROW 18' (5.5 m) BACK FROM STOP BAR. PLACE ANOTHER ARROW EVEN WITH THE BEGINNING OF THE SOLID WHITE LINE. SPACE ADDITIONAL ARROWS EVENLY UP TO 80' (24.4 m) MAXIMUM SPACING. USE MINIMUM OF 2 ARROWS.

NOT TO SCALE
 Note: All dimensions are in INCHES (millimeters) unless otherwise shown.

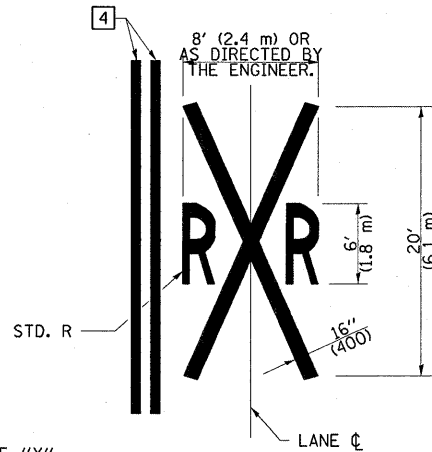
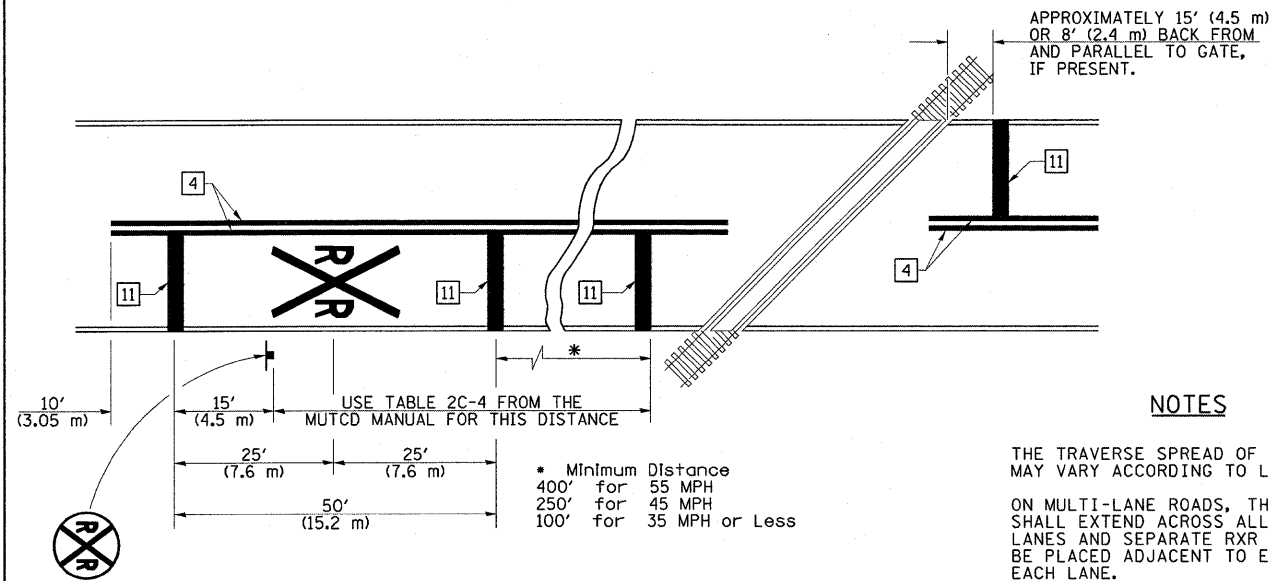
FILE NAME =	USER NAME = teasleyck	DESIGNED -	REVISED -
cr:\pv_work\p\dot\teasleyck\d0239387\07	4504-shd-deta:ls.dgn	DRAWN -	REVISED -
	PLOT SCALE = 50.0000 "/td> <td>CHECKED -</td> <td>REVISED -</td>	CHECKED -	REVISED -
	PLOT DATE = 12/14/2010	DATE -	REVISED -

**STATE OF ILLINOIS
 DEPARTMENT OF TRANSPORTATION**

**PAVEMENT MARKING AND RAISED REFLECTIVE PAVEMENT MARKERS
 (RURAL & URBAN APPLICATIONS)**

DISTRICT 7 DETAIL NO. 7800001				
F.A.P. RTE.	SECTION	COUNTY	TOTAL SHEETS	SHEET NO.
770	.	Shelby	24	23
CONTRACT NO. 74504				
ILLINOIS FED. AID PROJECT				

PAVEMENT MARKINGS AT RAILROAD-HIGHWAY GRADE CROSSING



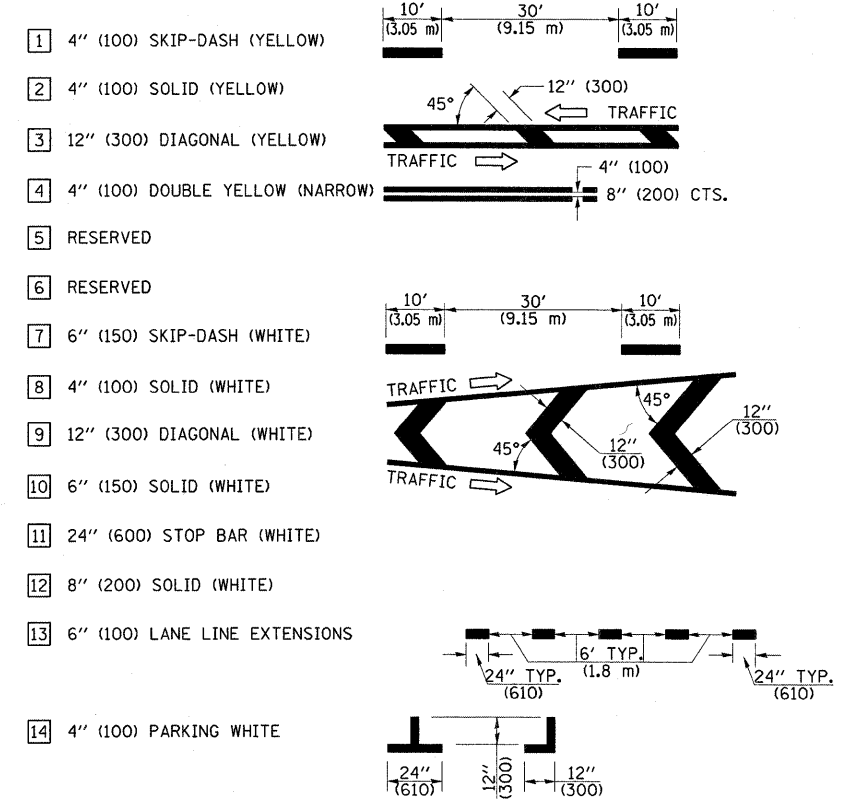
NOTES

THE TRAVERSE SPREAD OF THE "X" MAY VARY ACCORDING TO LANE WIDTH.

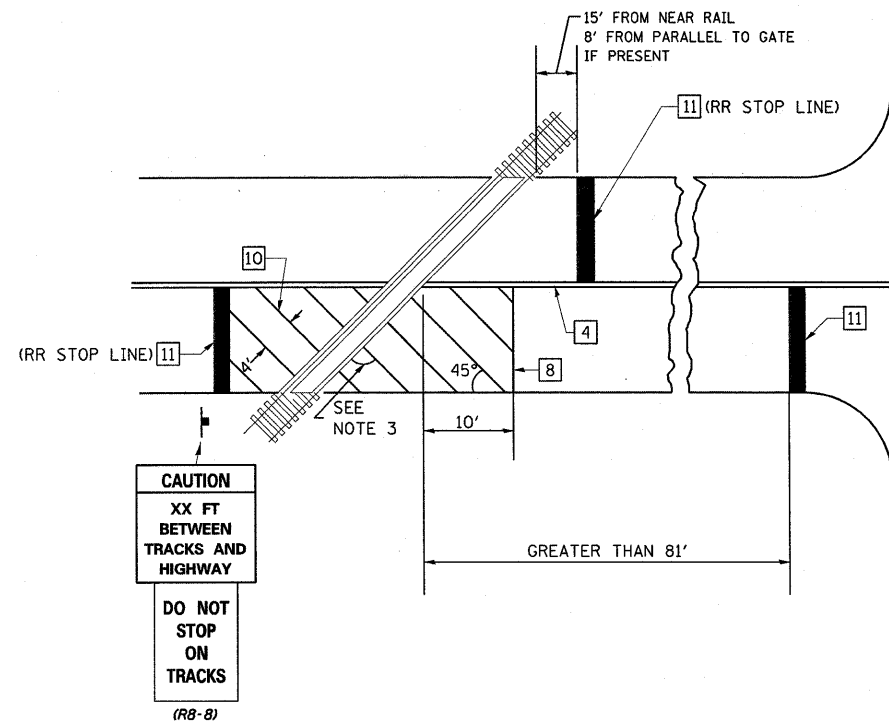
ON MULTI-LANE ROADS, THE STOP LINES SHALL EXTEND ACROSS ALL APPROACH LANES AND SEPARATE RXR SYMBOLS SHALL BE PLACED ADJACENT TO EACH OTHER IN EACH LANE.

WHEN THE PAVEMENT MARKING SYMBOL IS USED, A PORTION OF THE SYMBOL SHOULD BE LOCATED DIRECTLY ADJACENT TO THE ADVANCE WARNING SIGN (W10-1) AS PLACED BY TABLE II-1, CONDITION B OF THE MUTCD.

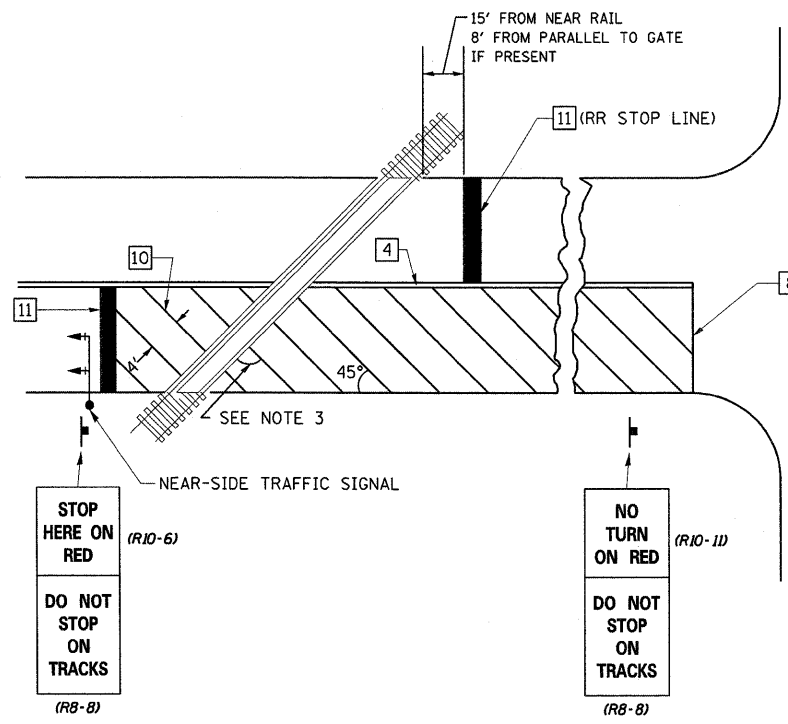
PAVEMENT MARKING LEGEND



RAILROAD CROSSING WITH INTERCONNECT ONLY



RAILROAD CROSSING WITH INTERCONNECT AND PRE-SIGNALS



GENERAL NOTES

1. SUPPLEMENTAL PAVEMENT MARKINGS TO BE INSTALLED ONLY ON APPROACHES TO INTERSECTIONS CONTROLLED BY TRAFFIC SIGNALS WHICH ARE INTERCONNECTED WITH THE RAILROAD WARNING SIGNALS.
2. EXTEND PAVEMENT MARKINGS TO THE INTERSECTION ONLY WHERE NEAR-SIDE TRAFFIC SIGNALS ARE USED.
3. WHERE THE ANGLE BETWEEN THE DIAGONAL PAVEMENT MARKINGS AND THE TRACK WOULD BE LESS THAN 20°, THE PAVEMENT MARKINGS SHOULD BE PLACED IN THE OPPOSITE DIRECTION FROM THAT SHOWN.

SUPPLEMENTAL PAVEMENT MARKING TREATMENT FOR RAILROAD-HIGHWAY GRADE CROSSING

NOT TO SCALE

Note: All dimensions are in INCHES (millimeters) unless otherwise shown.

FILE NAME =
c:\pw_work\pw\dot\teasleyk\d0239387\07

USER NAME = teasleyk
4524-sht-details.dgn

DESIGNED -
DRAWN -

REVISED -
REVISED -

CHECKED -
DATE -

REVISED -
REVISED -

STATE OF ILLINOIS
DEPARTMENT OF TRANSPORTATION

PAVEMENT MARKING AND RAISED REFLECTIVE PAVEMENT MARKERS
(RURAL & URBAN APPLICATIONS)

SCALE: SHEET NO. OF SHEETS STA. TO STA.

DISTRICT 7 DETAIL NO. 78000001

F.A.P. RTE.	SECTION	COUNTY	TOTAL SHEETS	SHEET NO.
770	*	Shelby	24	24
CONTRACT NO. 74504			ILLINOIS FED. AID PROJECT	