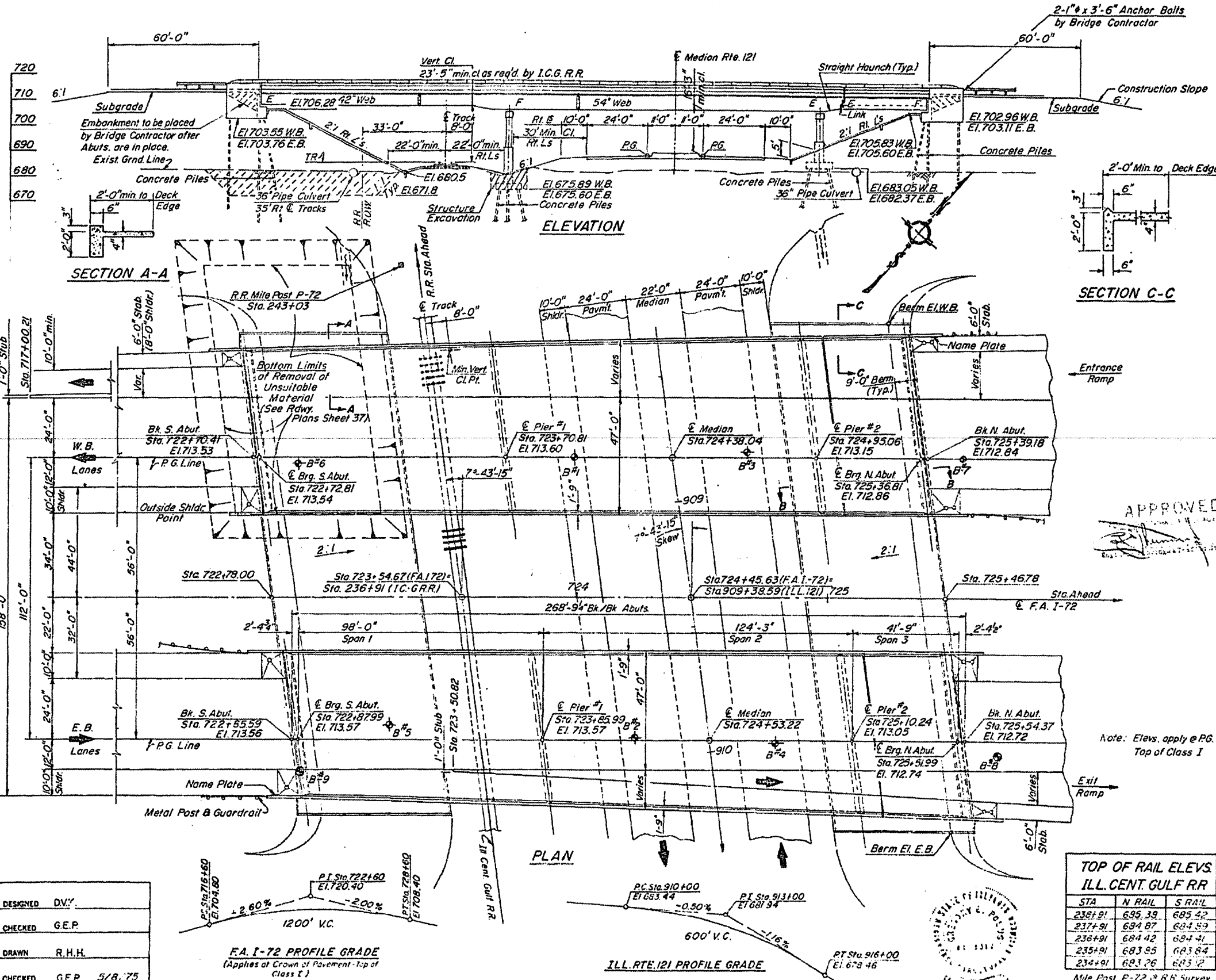


B.M. # 102 - 6" Boat Spike in 15" Hackberry
 698' Rl. Sta. 727+00 (Along State Rte. 121)
 Elev. 674.950

STATE OF ILLINOIS
 DEPARTMENT OF TRANSPORTATION

ROUTE NO.	SECTION	COUNTY	TOTAL SHEETS	SHEET NO.	SHEET NO. 1
F.A.I.-72	5B-63HVB	MACON	27	40	26 SHEETS
FED. ROAD DIST. NO. 3	ILLINOIS	FED. AID PROJECT			



GENERAL NOTES

All reinforcement bars shall be lapped 24 diameters unless otherwise shown.
 The Basic Lead Silico Chromate paint system shall be used for shop and field painting of structural steel.
 Field welding of construction accessories will not be permitted to the bottom flange of beams or girders, nor to the top flange for a distance equal to one-fourth the span length each way from the pier supports. Field welding in other areas will be permitted only when approved by the Engineer.
 Anchor bolts shall be set before bolting cross frames over supports. Fasteners shall be high strength bolts. Bolts 3/4", open holes 1/8" unless otherwise noted.
 The embankment configuration shown shall be the minimum embankment that must be constructed prior to construction of the abutments.
 The concrete wall section above the mandatory construction joint at the top of the slab shall be constructed of Class X Concrete, except the aggregates shall conform to the requirements of Handroit Concrete.
 Protective Coat shall not be applied to surfaces to which Waterproofing Membrane System is applied.
 Slope wall shall be reinforced with welded wire fabric 6"x6" mesh, weighing 58#/100 sq ft.
 Calculated weight of Structural Steel = 1,028,530 Lbs.
 Concrete Piles at Abutments shall be driven in holes precored through the embankment in accordance with Article 513.09 (c) of the Standard Specifications.

The main load carrying member components subject to the Supplemental Requirements for Notch Toughness are the flanges, as designated on the Grid: Elevation View along with Webs, Splice Plates, Link Plates and Pin Plates of the Steel Girders.
 The Contractor shall drive 4 test piles in permanent locations as directed by the Engineer before ordering the remainder of piles. Test piles shall be driven at the following locations: One test pile at the South Abut. West Bound Lanes, One test pile at Pier #1 East Bound Lanes, One test pile at Pier #2 West Bound Lanes, and One test pile at the North Abut. East Bound Lanes.
 See special provisions for Boring Data.

BILL OF MATERIALS

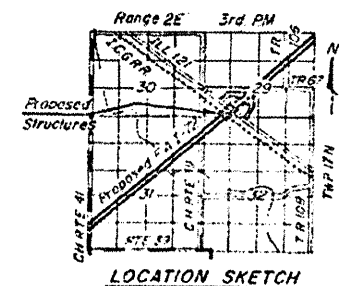
ITEM	UNIT	SUPER	SUB	TOTAL
Bit. Conc. Surface Course, Class I	Tons	300		300
Waterproofing Membrane System	Sq. Yds.	3686		3686
Structure Excavation	Cu. Yds.		225	225
Protective Coat	Sq. Yds.	429		429
Class X Concrete	Cu. Yds.	1023.0	780.5	1803.5
Structural Steel	L.S.	1		1
Aluminum Railing	Lin. Ft.	1164		1164
Reinforcement Bars	Lbs.	268,290	89,390	357,680
Name Plate	Each	2		2
Sloped Wall (4")	Sq. Yds.		2980	2980
Preformed Joint Sealer (2 1/2")	Lin. Ft.	126		126
Stud Shear Connectors	Each	9405		9405
Concrete Piles	Lin. Ft.		8978	8978
Test Piles (Concrete)	Each		4	4
Neoprene Expansion Joint (2 1/2")	Lin. Ft.	136		136

APPROVED

TOP OF RAIL ELEVS. ILL. CENT. GULF RR

STA.	N. RAIL	S. RAIL
2367+91	685.38	685.42
237+91	684.87	684.89
236+91	684.42	684.41
235+91	683.85	683.84
234+91	683.26	683.2

Mile Post P-72 & RR Survey
 Sta. 243+03, 10.5' S of Track



GENERAL PLAN & ELEV.
 F.A. I-72 OVER ILL. RTE 121
 & ILL. CENT. GULF RR.
 MACON COUNTY
 SEC. 5B-63HVB
 STA 724+45.63

DESIGNED	D.V.Y.
CHECKED	G.E.P.
DRAWN	R.H.H.
CHECKED	G.E.P. 5/8.75