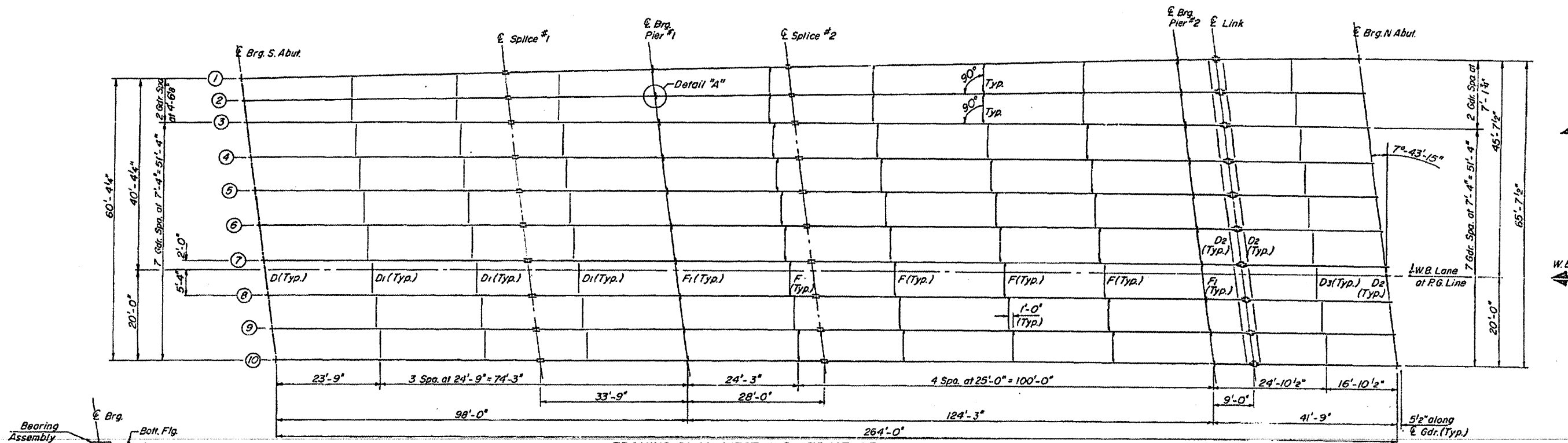


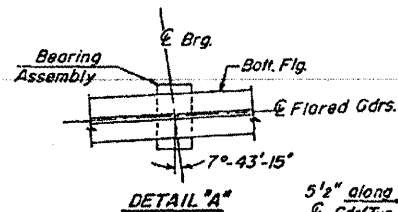
STATE OF ILLINOIS  
DEPARTMENT OF TRANSPORTATION

ROUTE NO.	SECTION	COUNTY	TOTAL SHEETS	SHEET NO.
P.A. I-72	58-63+VB	MACON	27	52
FED. ROAD DIST. NO. 7	ALPHABETIC	FED. AID PROJECT		

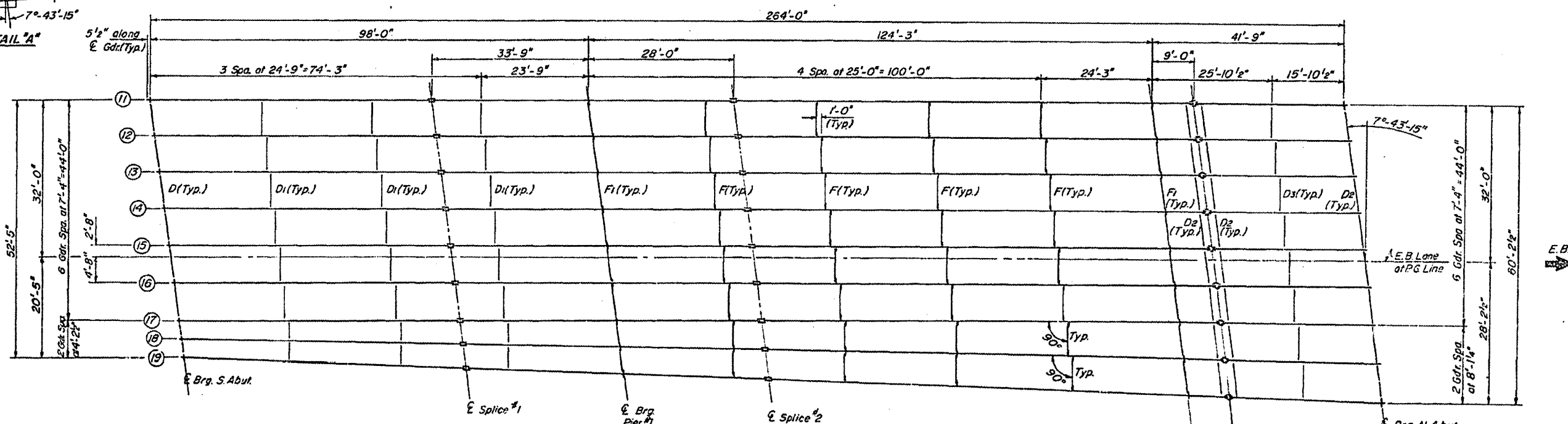
SHEET NO. 13  
26 SHEETS



FRAMING PLAN WEST BND. STRUCTURE



DETAIL "A"



FRAMING PLAN EAST BND. STRUCTURE

DESIGNED	D.V.K.
CHECKED	G.E.K.
DRAWN	J.T.
CHECKED	G.E.P.

FRAMING PLAN  
FAI 72 OVER ILL. RTE. 121  
& ILL. CENT. GULF RR.  
MACON COUNTY  
SEC. 58-63+VB  
STA. 724+45.63