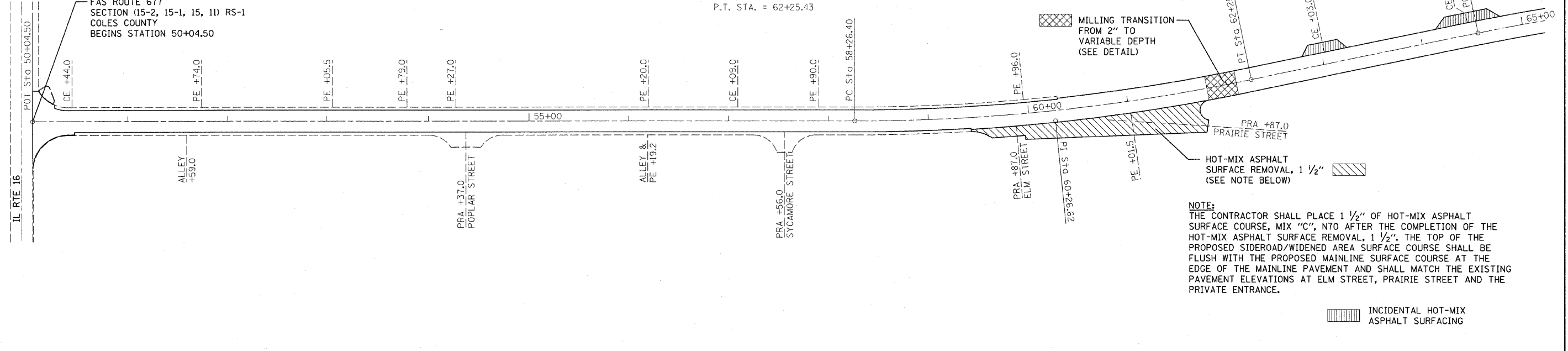


EXIST. CURVE CUR1  
 PI STA. = 60+26.62  
 $\Delta = 11^\circ 45' 31''$  (LT)  
 $D = 2^\circ 56' 48''$   
 $R = 1,944.36'$   
 $T = 200.22'$   
 $L = 399.03'$   
 $E = 10.28'$   
 $e =$  -----  
 $T.R. =$  -----  
 $S.E. RUN =$  -----  
 $P.C. STA. = 58+26.40$   
 $P.T. STA. = 62+25.43$

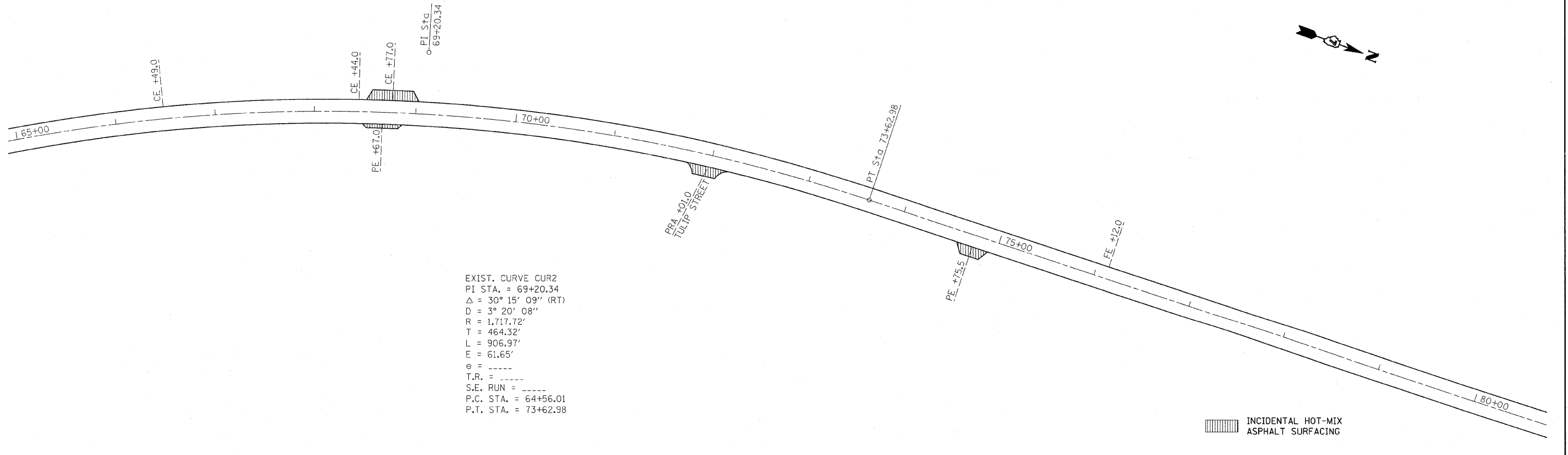
FAS ROUTE 677  
 SECTION (15-2, 15-1, 15, 11) RS-1  
 COLES COUNTY  
 BEGINS STATION 50+04.50



NOTE:  
 THE CONTRACTOR SHALL PLACE 1 1/2" OF HOT-MIX ASPHALT SURFACE COURSE, MIX "C", N70 AFTER THE COMPLETION OF THE HOT-MIX ASPHALT SURFACE REMOVAL, 1 1/2". THE TOP OF THE PROPOSED SIDEROAD/WIDENED AREA SURFACE COURSE SHALL BE FLUSH WITH THE PROPOSED MAINLINE SURFACE COURSE AT THE EDGE OF THE MAINLINE PAVEMENT AND SHALL MATCH THE EXISTING PAVEMENT ELEVATIONS AT ELM STREET, PRAIRIE STREET AND THE PRIVATE ENTRANCE.

INCIDENTAL HOT-MIX ASPHALT SURFACING

EXIST. CURVE CUR2  
 PI STA. = 69+20.34  
 $\Delta = 30^\circ 15' 09''$  (RT)  
 $D = 3^\circ 20' 08''$   
 $R = 1,717.72'$   
 $T = 464.32'$   
 $L = 906.97'$   
 $E = 61.65'$   
 $e =$  -----  
 $T.R. =$  -----  
 $S.E. RUN =$  -----  
 $P.C. STA. = 64+56.01$   
 $P.T. STA. = 73+62.98$



INCIDENTAL HOT-MIX ASPHALT SURFACING

FILE NAME =	USER NAME = swartzw	DESIGNED -	REVISED -	<b>STATE OF ILLINOIS DEPARTMENT OF TRANSPORTATION</b>	<b>PLAN SHEET</b>		F.A.S. RTE. 677	SECTION (15-2,15-1,15,11)RS-1	COUNTY COLES	TOTAL SHEETS 63	SHEET NO. 20	
c:\pw\work\p\dot\swartzw\d8242172\d77	607-shr-plan.dgn	DRAWN -	REVISED -		SCALE: 50	SHEET NO. 1 OF 15 SHEETS	STA. 50+04.50 TO STA. 80+00	CONTRACT NO. 74507				
	PLOT SCALE = 50.0000" / IN.	CHECKED -	REVISED -		ILLINOIS FED. AID PROJECT							
	PLOT DATE = 1/31/2011	DATE -	REVISED -									