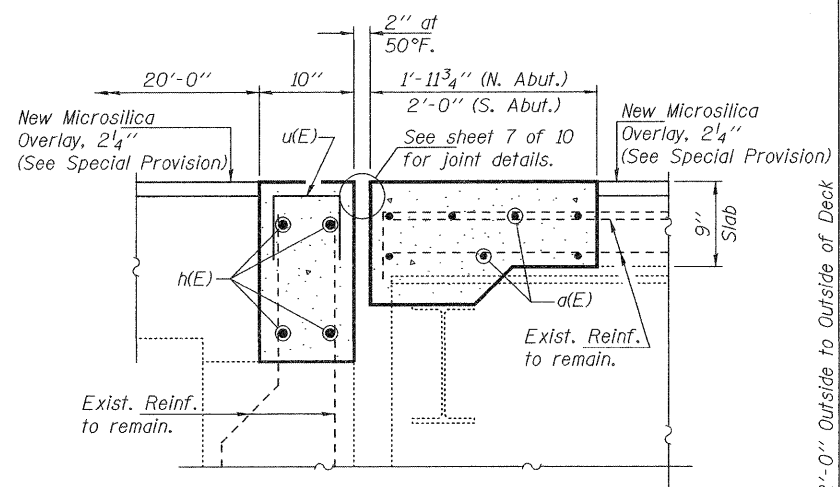
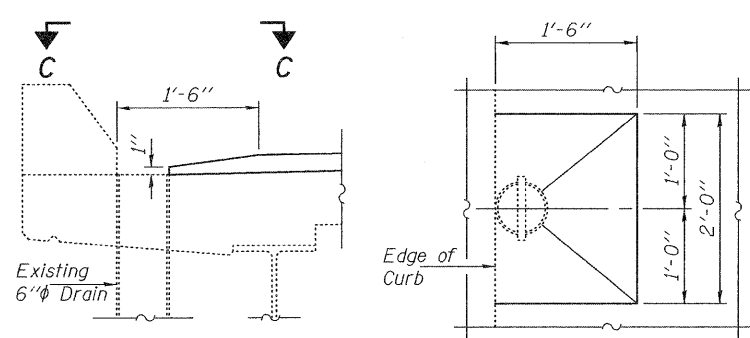


SECTION A-A

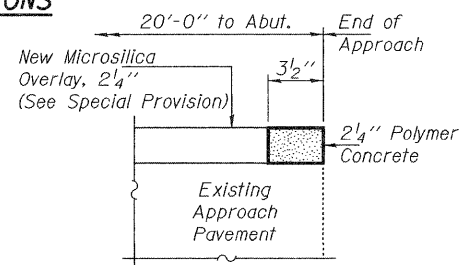


SECTION B-B

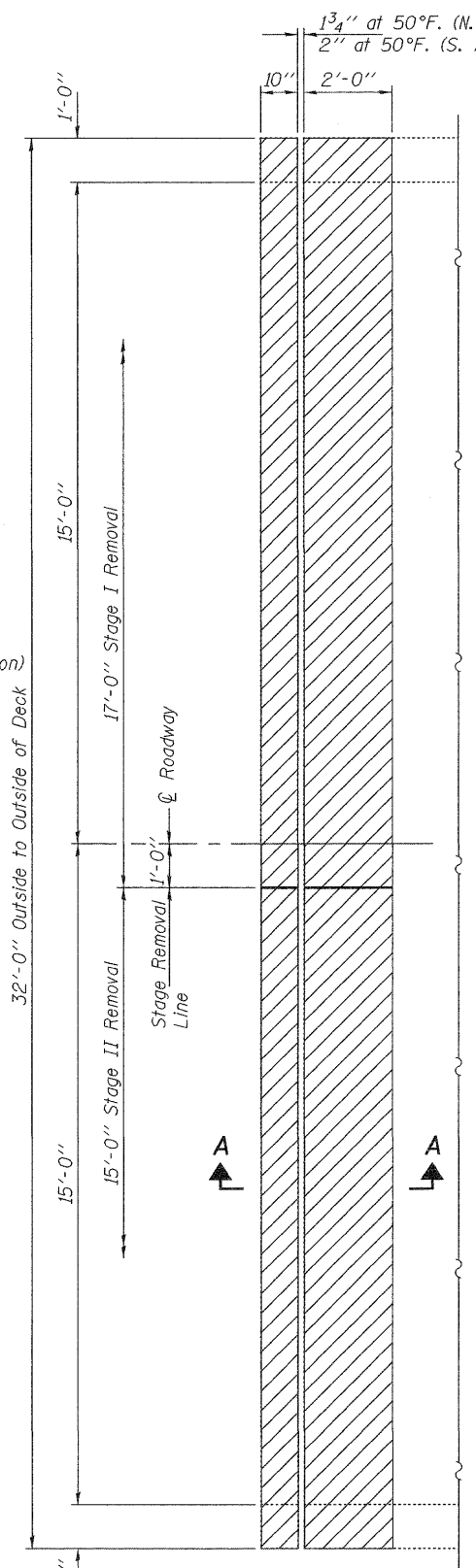


SECTION THRU CURB AT DRAIN EXTENSIONS

VIEW C-C

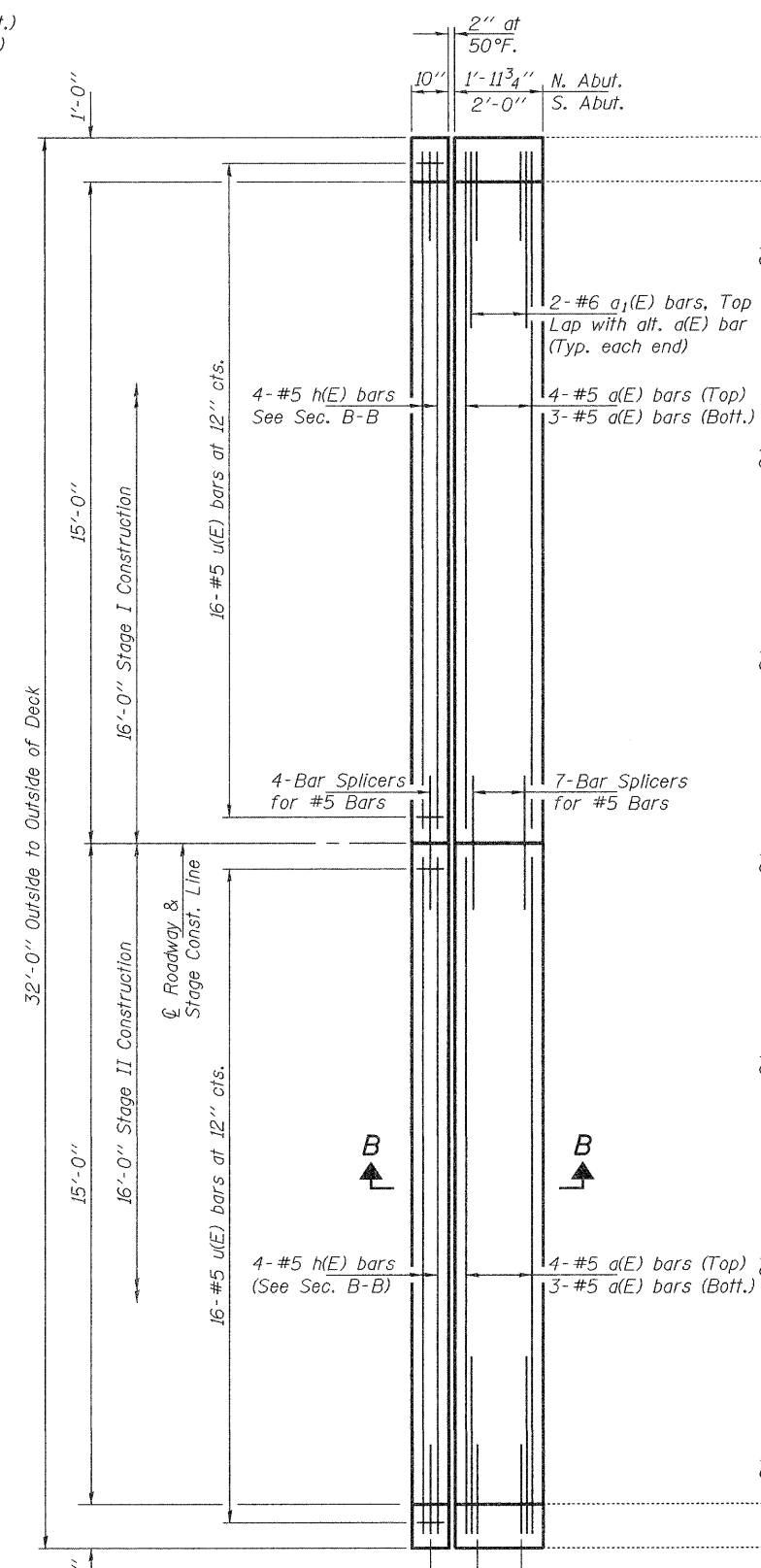


DETAIL "A"



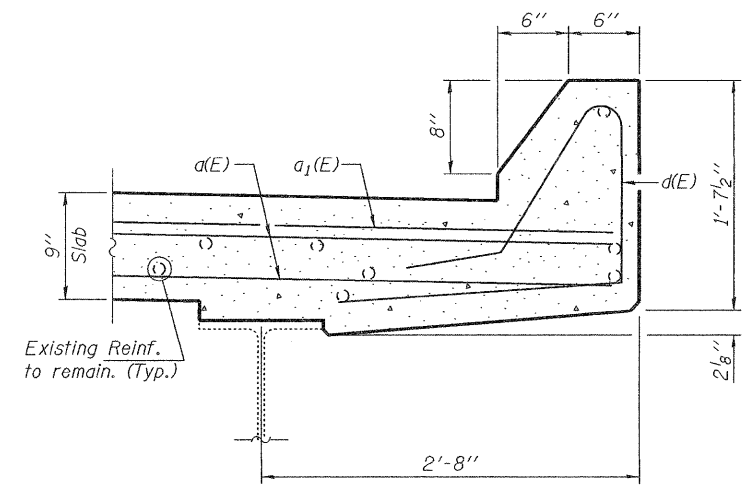
REMOVAL PLAN AT ABUTMENTS

North Abutment shown, South Abutment similar by 180° rotation except as noted.

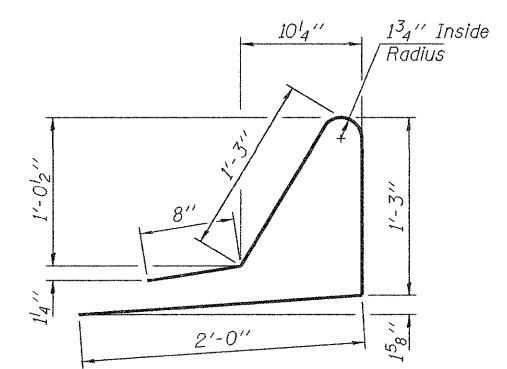


CONCRETE PLAN AT ABUTMENTS

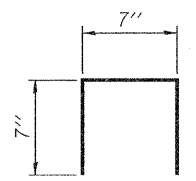
North Abutment shown, South Abutment similar by 180° rotation except as noted.



SECTION THRU CURB



d(E) BARS



u(E) BARS

BILL OF MATERIAL (PER ABUTMENT)

Bar	No.	Size	Length	Shape
a(E)	14	#5	15'-8"	—
a1(E)	4	#6	4'-0"	—
d(E)	8	#5	5'-2"	∟
h(E)	8	#5	15'-8"	—
u(E)	32	#5	1'-9"	□
Concrete Removal			Cu. Yd.	3.5
Concrete Superstructure			Cu. Yd.	3.9
Bar Splicers			Each	11
Reinforcement Bars, Epoxy Coated			Pound	490

DESIGNED - ADY
 CHECKED - IJL
 DRAWN - Kyle M. Steffen
 CHECKED - ADY IJL

EXAMINED
 PASSED
 ACTING ENGINEER OF STRUCTURAL SERVICES
 ACTING ENGINEER OF BRIDGES AND STRUCTURES

DATE - MARCH 4, 2011

**STATE OF ILLINOIS
 DEPARTMENT OF TRANSPORTATION**

**JOINT REMOVAL & REPLACEMENT DETAILS
 SN 015-0036**

SHEET NO. 3 OF 10 SHEETS

F.A.S. RTE.	SECTION	COUNTY	TOTAL SHEETS	SHEET NO.
677	(15-2, 15-1, 15, 11)RS-1	COLES	63	41
CONTRACT NO. 74507			ILLINOIS FED. AID PROJECT	