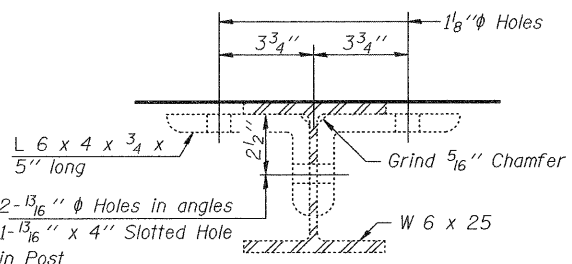
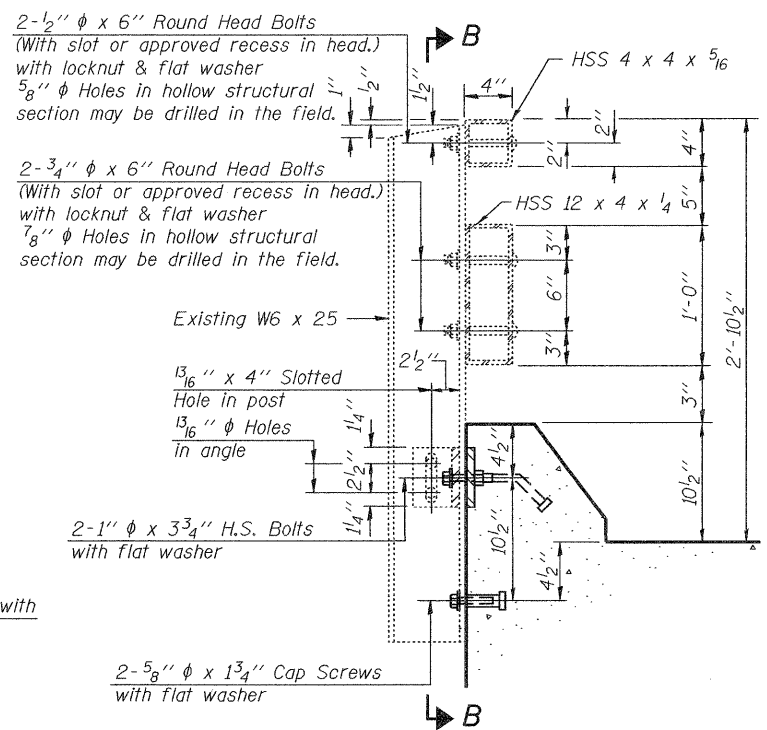


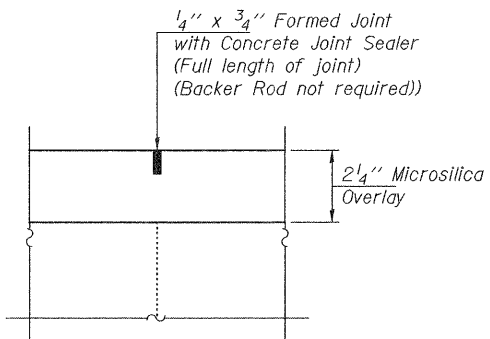
SECTION B-B



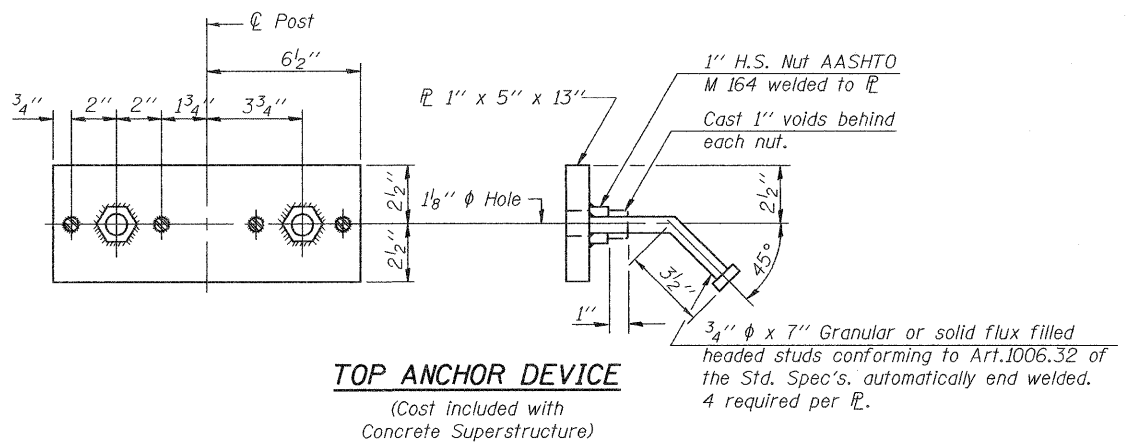
SECTION C-C



SECTION AT RAIL POST



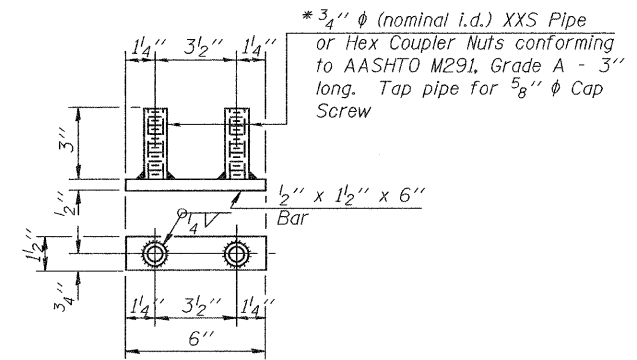
DETAIL "B"



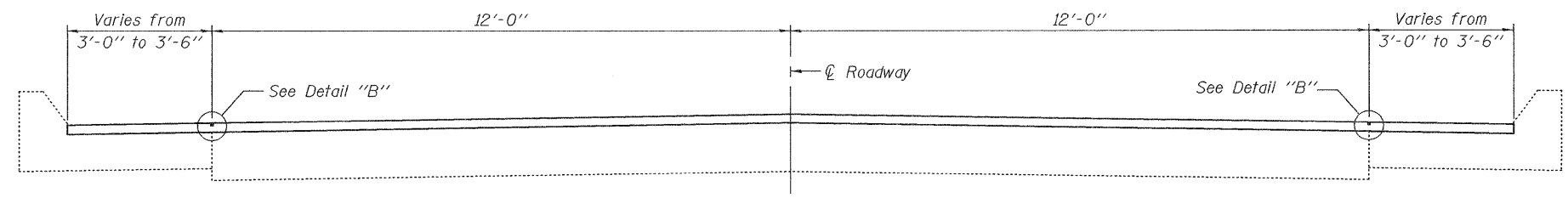
TOP ANCHOR DEVICE
(Cost included with Concrete Superstructure)

1" H.S. Nut AASHTO M 164 welded to PL
Cast 1" voids behind each nut.
3/4" x 7" Granular or solid flux filled headed studs conforming to Art.1006.32 of the Std. Spec's. automatically end welded. 4 required per PL.

* Threaded areas shall be plugged or blocked off during casting of beam.



BOTTOM ANCHOR DEVICE
(Cost included with Concrete Superstructure)



APPROACH CROSS-SECTION

DESIGNED - ADY	EXAMINED - <i>Joanne F. Jelliff</i>	DATE - MARCH 4, 2011	STATE OF ILLINOIS DEPARTMENT OF TRANSPORTATION		RAIL POST DETAILS & APPROACH CROSS-SECTION SN 015-0036		F.A.S. RTE. 677	SECTION (15-2, 15-1, 15, 11)RS-1	COUNTY COLES	TOTAL SHEETS 63	SHEET NO. 47
CHECKED - IJL	ACTING ENGINEER OF STRUCTURAL SERVICES						SHEET NO. 9 OF 10 SHEETS		ILLINOIS FED. AID PROJECT		CONTRACT NO. 74507
DRAWN - Kyle M. Steffen	PASSED - <i>Carl Boyer</i>										
CHECKED - ADY IJL	ACTING ENGINEER OF BRIDGES AND STRUCTURES										