

STATE OF ILLINOIS
 DEPARTMENT OF TRANSPORTATION
 DIVISION OF HIGHWAYS

**PROPOSED
 HIGHWAY PLANS**

FAP ROUTE 91 (IL RTE 16)
 SECTION D7 FLASHING BEACONS 2011-1

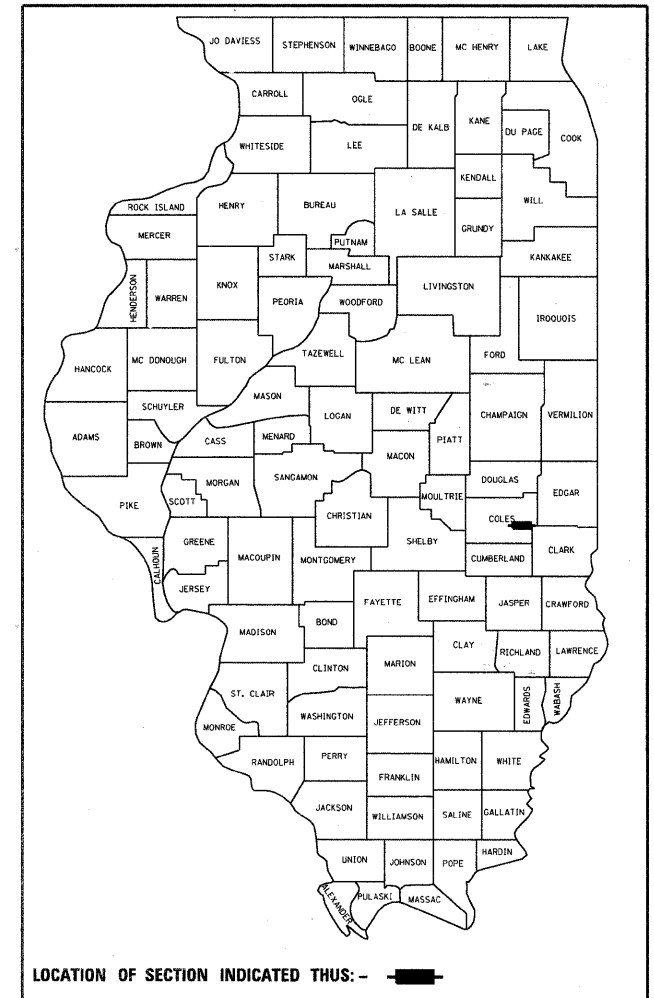
TYPE of IMPROVEMENT
 COLES COUNTY

C-97-045-11

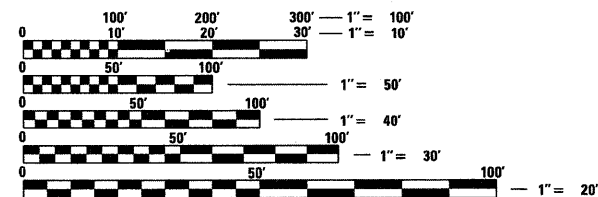
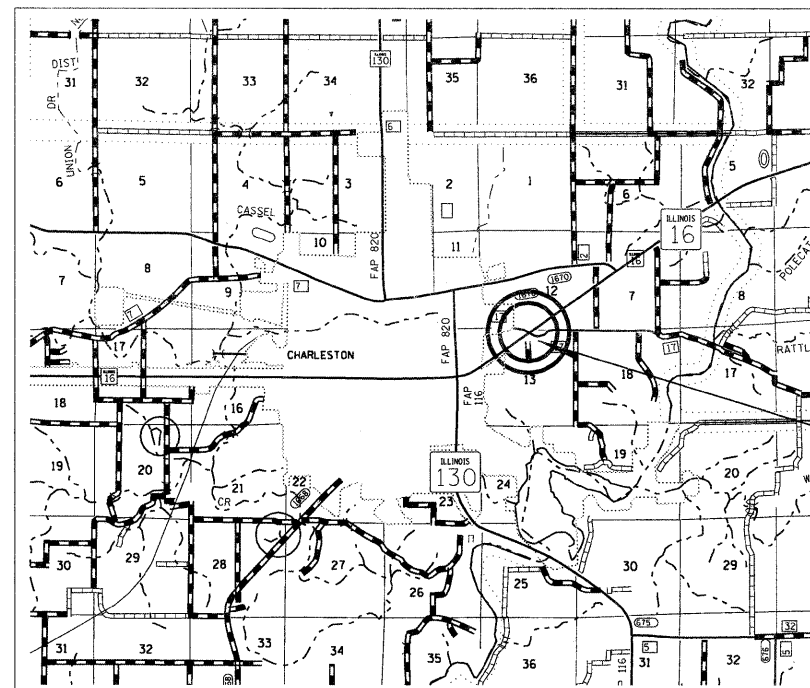
F.A.P. RTE.	SECTION	COUNTY	TOTAL SHEETS	SHEET NO.
91		COLES	5	1
		ILLINOIS	CONTRACT NO. 74516	

• D7 FLASHING BEACONS 2011-1

D-97-016-11



FOR INDEX OF SHEETS, SEE SHEET NO. 2



FULL SIZE PLANS HAVE BEEN PREPARED USING STANDARD ENGINEERING SCALES. REDUCED SIZED PLANS WILL NOT CONFORM TO STANDARD SCALES. IN MAKING MEASUREMENTS ON REDUCED PLANS, THE ABOVE SCALES MAY BE USED.

J.U.L.I.E.
 JOINT UTILITY LOCATION INFORMATION FOR EXCAVATION
 1-800-892-0123
 OR 811

PROJECT ENGINEER ROB MACKLIN
 PROJECT MANAGER LYNN McCLELLAN

GROSS LENGTH = 1500 FT. = 0.28 MILE
 NET LENGTH = 1500 FT. = 0.28 MILE

CONTRACT NO. 74516

STATE OF ILLINOIS
 DEPARTMENT OF TRANSPORTATION
 DIVISION OF HIGHWAYS

SUBMITTED Feb. 7 20 11
Rogert Drueckel
 DEPUTY DIRECTOR OF HIGHWAYS, REGION ENGINEER

March 25 20 11
Scott E. Stitt, P.E.
 acting ENGINEER OF DESIGN AND ENVIRONMENT

March 25 20 11
Christine M. Reed
 DIRECTOR OF HIGHWAYS, CHIEF ENGINEER

**PRINTED BY THE AUTHORITY
 OF THE STATE OF ILLINOIS**

GENERAL NOTES

THIS PROJECT IS LOCATED AT THE INTERSECTION OF FAP 91 (IL RTE 16) AND EAST HARRISON STREET, EAST OF THE CITY OF CHARLESTON, COUNTY OF COLES. THIS PROJECT CONSISTS OF THE INSTALLATION OF A NEW FLASHING BEACON SYSTEM AND LED STOP SIGNS AND ALL OTHER WORK NECESSARY TO COMPLETE THE SYSTEM.

THE LOCATIONS OF ALL FLASHING BEACON COMPONENTS AS SHOWN ON THE PLANS ARE APPROXIMATE ONLY. THE FINAL LOCATIONS SHALL BE DETERMINED BY THE ENGINEER IN THE FIELD.

THE EXISTING UTILITY LINES ARE SHOWN ON THE PLANS TO INDICATE THEIR PRESENCE AND APPROXIMATE LOCATION. THE CONTRACTOR SHALL VERIFY THE EXACT LOCATION OF ALL UNDERGROUND UTILITIES PRIOR TO BEGINNING CONSTRUCTION. CALL J.U.L.I.E. AT 1-800-892-0123.

THE TRAFFIC SIGNAL ENGINEER AT THE ILLINOIS DEPARTMENT OF TRANSPORTATION SHALL BE NOTIFIED AT 217-342-8382 AT LEAST 72 HOURS PRIOR TO TURNING ON ANY FLASHER OR CONTROLLER UNIT.

THE SIZE OF THE CABLE SUPPLIED SHALL BE EQUAL TO OR GREATER THAN THE SIZE OF THE CABLE REQUIRED TO CARRY THE LOAD BETWEEN THE CONTROLLER AND THE SERVICE INSTALLATION.

ALL HARDWARE SHALL BE TIGHTENED AND WELL SECURED. CABLES SHALL BE NEATLY WOUND IN HANDHOLES AND GULFBOXES. CABLES SHALL BE NEATLY TRAINED IN THE CONTROLLER CABINET.

NO ADDITIONAL COMPENSATION WILL BE ALLOWED FOR PLACING CONDUIT AT GREATER THAN 2 FOOT MINIMUM DEPTH TO AVOID OBSTACLES SUCH AS UNDERGROUND UTILITIES.

THE CONTRACTOR IS RESPONSIBLE FOR UNCOVERING OR HAND DIGGING AROUND UTILITIES AS NECESSARY. THE COST OF THIS WORK IS TO BE INCLUDED WITH THE TRENCH AND BACKFILL FOR ELECTRICAL WORK PAY ITEM.

THE NUMBER OF CONDUCTORS FOR ELECTRIC CABLES AS SHOWN ON THE PLANS SHALL BE THE MINIMUM NUMBER OF CONDUCTORS FURNISHED FOR EACH LOCATION. THE CONTRACTOR MAY SUBSTITUTE AN ELECTRIC CABLE WITH MORE CONDUCTORS THAN SPECIFIED BUT NO ADDITIONAL COMPENSATION WILL BE MADE FOR THE EXTRA CONDUCTORS.

THE EXISTING STOP SIGN PANELS AT LOCATIONS #2 & #3 SHALL BE SALVAGED AND DELIVERED TO THE MATTOON MAINTENANCE YARD. THE 2 EXISTING WOOD POSTS AT LOCATIONS #1 & #4 AND THE 2 EXISTING TELSPAR POSTS AT LOCATIONS # 2 & #3 ARE TO BE REMOVED AND SHALL BECOME THE PROPERTY OF THE CONTRACTOR AND SHALL BE DISPOSED OF ACCORDINGLY. THE EXISTING SIGN PANELS AT LOCATIONS #1 & #4 SHALL BE REMOVED AND RE-ERECTED ON THE PROPOSED WOOD SIGN SUPPORTS.

ALL NEW SIGNAL WIRING SHALL EXTEND FROM CONTROLLER TO SIGNAL. SPLICES IN HANDHOLES OR GULFBOXES WILL NOT BE ALLOWED.

COLES-MOULTRIE ELECTRIC CO-OP
GREG GILLESPIE
1-217-258-5803

INDEX OF SHEETS

<u>SHEET NO</u>	<u>TITLE</u>
1	COVER SHEET
2	INDEX OF SHEETS & GENERAL NOTES
3	SUMMARY OF QUANTITIES
4	DETAILS
5	PLAN SHEET

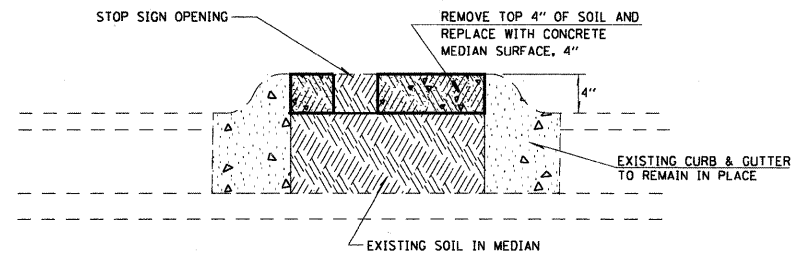
THE FOLLOWING STANDARDS ARE A PART OF THESE PLANS AND ARE INCLUDED FOLLOWING SHEET NO. 5 OF THE PLANS:

000001-06	STANDARD SYMBOLS, ABBREVIATIONS, AND PATTERNS
701001-02	OFF-ROAD OPERATION 2L, 2W, 15' (4.5 m) MIN. AWAY
701006-03	OFF-ROAD OPERATIONS 2L, 2W 15' (4.5 M) TO 24" FROM PAVEMENT EDGE
701011-02	OFF-ROAD MOVING OPERATIONS 2L, 2W DAY ONLY
701101-02	OFF-ROAD OPERATIONS, MULTILANE, 15' TO 24" FROM PAVEMENT EDGE
701301-04	LANE CLOSURE 2L, 2W SHORT TIME OPERATIONS
701701-07	URBAN LANE CLOSURE MULTILANE INTERSECTION
701901-01	TRAFFIC CONTROL DEVICES
720001-01	SIGN PANEL MOUNTING DETAILS
805001-01	ELECTRICAL SERVICE INSTALLATION DETAILS
814001-02	HANDHOLES
880001-01	SPAN WIRE MOUNTED SIGNALS AND FLASHING BEACON INSTALLATION

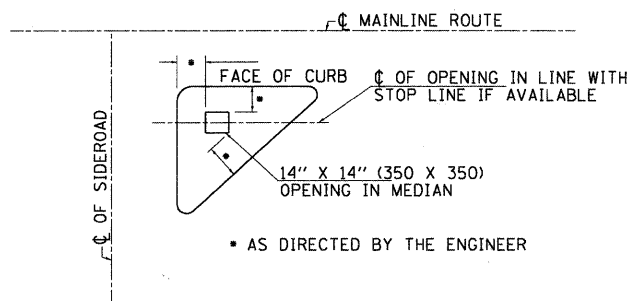
FILE NAME = #FILE#	USER NAME = #USER#	DESIGNED -	REVISED -	STATE OF ILLINOIS DEPARTMENT OF TRANSPORTATION	INDEX OF SHEETS & GENERAL NOTES		F.A.P. RTE.	SECTION	COUNTY	TOTAL SHEETS	SHEET NO.
	PLOT SCALE = #SCALE#	DRAWN -	REVISED -				91	.	COLES	5	2
PLOT DATE = #DATE#	CHECKED -	REVISED -	SCALE: SHEET NO. OF SHEETS STA. TO STA.		CONTRACT NO. 74516						
	DATE -	REVISED -			ILLINOIS FED. AID PROJECT						

SUMMARY OF QUANTITIES			TOTAL QUANTITIES	CONSTRUCTION TYPE CODE		
CODE NO	ITEM	UNIT		0021		
60618300	CONCRETE MEDIAN SURFACE, 4 INCH	SO FT	117	117		
67100100	MOBILIZATION	L SUM	1	1		
70102635	TRAFFIC CONTROL AND PROTECTION, STANDARD 701701	L SUM	1	1		
73000100	WOOD SIGN SUPPORT	FOOT	66	66		
81012500	CONDUIT IN TRENCH, 1 1/2" DIA., PVC	FOOT	1317	1317		
81012600	CONDUIT IN TRENCH, 2" DIA., PVC	FOOT	37	37		
81021320	CONDUIT PUSHED, 1 1/2" DIA., PVC	FOOT	232	232		
81021330	CONDUIT PUSHED, 2" DIA., PVC	FOOT	67	67		
81100500	CONDUIT ATTACHED TO STRUCTURE, 1 1/2" DIA., GALVANIZED STEEL	FOOT	46	46		
81400100	HANDHOLE	EACH	1	1		
81500100	GULFBOX JUNCTION	EACH	5	5		
81900200	TRENCH AND BACKFILL FOR ELECTRICAL WORK	FOOT	1348	1348		
85800100	FLASHER CONTROLLER	EACH	1	1		
87301225	ELECTRIC CABLE IN CONDUIT, SIGNAL NO. 14 3C	FOOT	1900	1900		
87301805	ELECTRIC CABLE IN CONDUIT, SERVICE, NO. 6 2C	FOOT	33	33		
88040030	SIGNAL HEAD, POLYCARBONATE, LED, 1-FACE, 1-SECTION, POST MOUNTED	EACH	2	2		
89100400	ILLUMINATED SIGN, LED	EACH	2	2		
X7270025	REMOVE EXISTING SIGN SUPPORT	EACH	4	4		
X7240600	REMOVE AND RE-ERECT EXISTING SIGN	EACH	4	4		
X8050115	SERVICE INSTALLATION, TYPE A (MODIFIED)	EACH	1	1		

FILE NAME :	USER NAME = #USER#	DESIGNED -	REVISED -	STATE OF ILLINOIS DEPARTMENT OF TRANSPORTATION	SUMMARY OF QUANTITIES			F.A.P. RTE.	SECTION	COUNTY	TOTAL SHEETS	SHEET NO.	
#FILE#		DRAWN -	REVISED -		91		COLES	5	3				
	PLOT SCALE = #SCALE#	CHECKED -	REVISED -		SCALE:	SHEET NO.	OF	SHEETS	STA.	TO STA.	CONTRACT NO. 74516		
	PLOT DATE = #DATE#	DATE -	REVISED -		ILLINOIS FED. AID PROJECT								



CONCRETE MEDIAN SURFACE, 4 INCH DETAIL

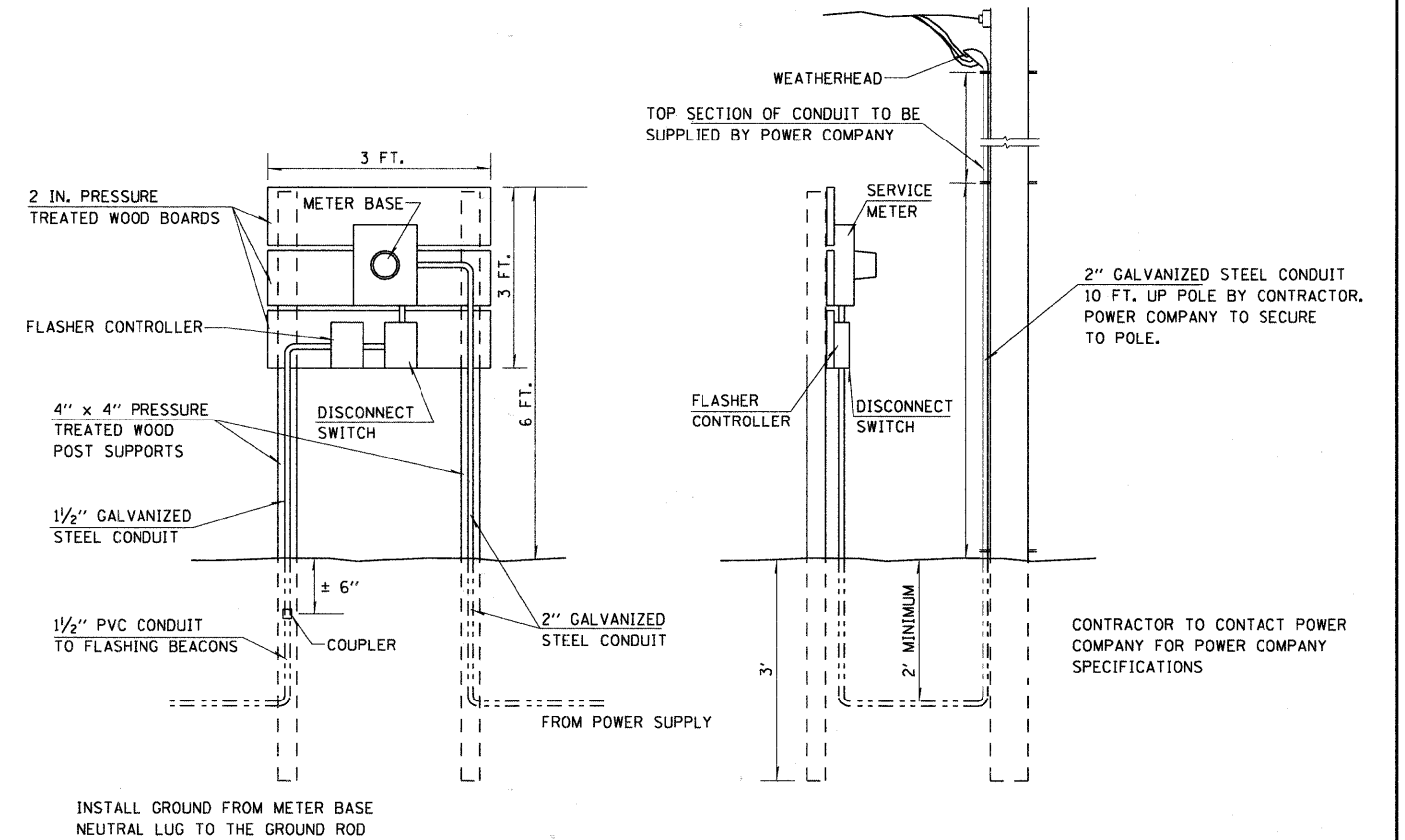


LOCATION OF STOP SIGN OPENINGS

GENERAL NOTES

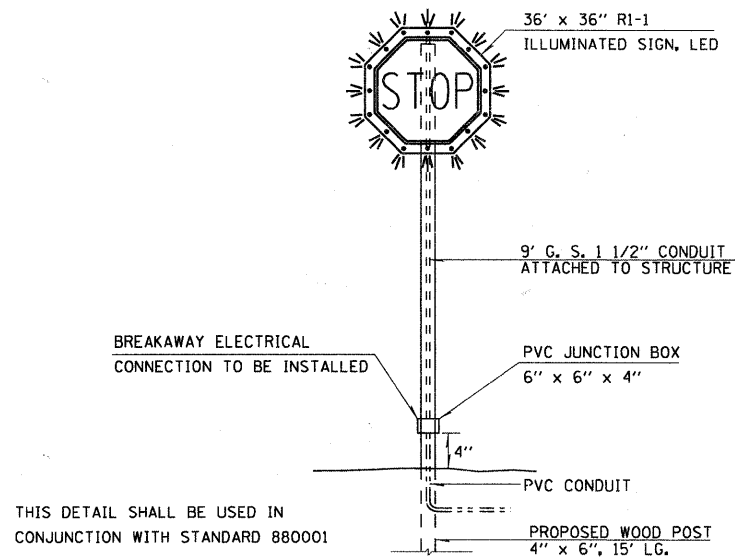
1. OPENINGS FOR SIGNS IN MEDIANS SHALL BE AS SHOWN OR AS DIRECTED BY THE ENGINEER.
2. THIS WORK WILL NOT BE PAID FOR SEPARATELY, BUT SHALL BE INCLUDED IN THE CONTRACT UNIT PRICE FOR CONCRETE MEDIAN SURFACE, 4 INCH AND NO ADDITIONAL COMPENSATION WILL BE ALLOWED.

* AS DIRECTED BY THE ENGINEER



THIS DETAIL SHALL BE USED IN CONJUNCTION WITH STANDARD 805001

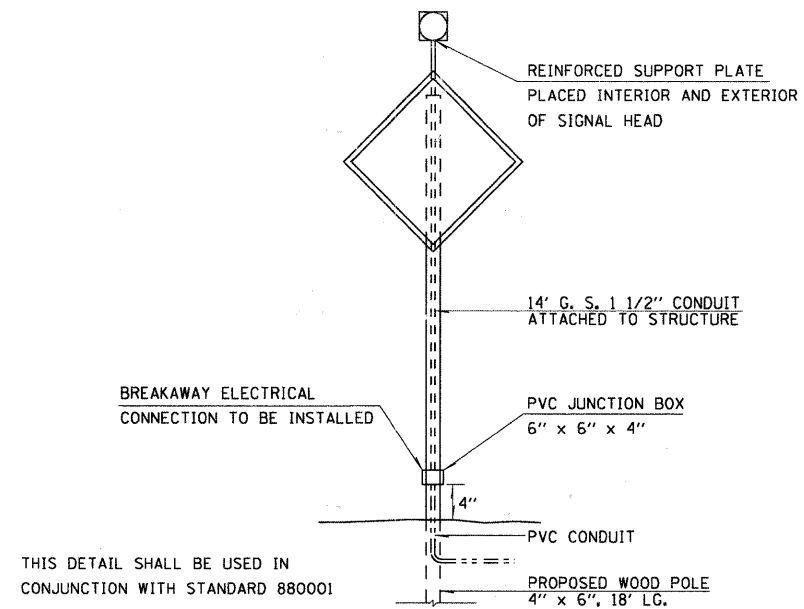
SERVICE INSTALLATION, TYPE A (MODIFIED)



THIS DETAIL SHALL BE USED IN CONJUNCTION WITH STANDARD 880001

POST MOUNTED ILLUMINATED SIGN, LED

LOCATION #2 AND LOCATION #3



THIS DETAIL SHALL BE USED IN CONJUNCTION WITH STANDARD 880001

POST MOUNTED FLASHING BEACON

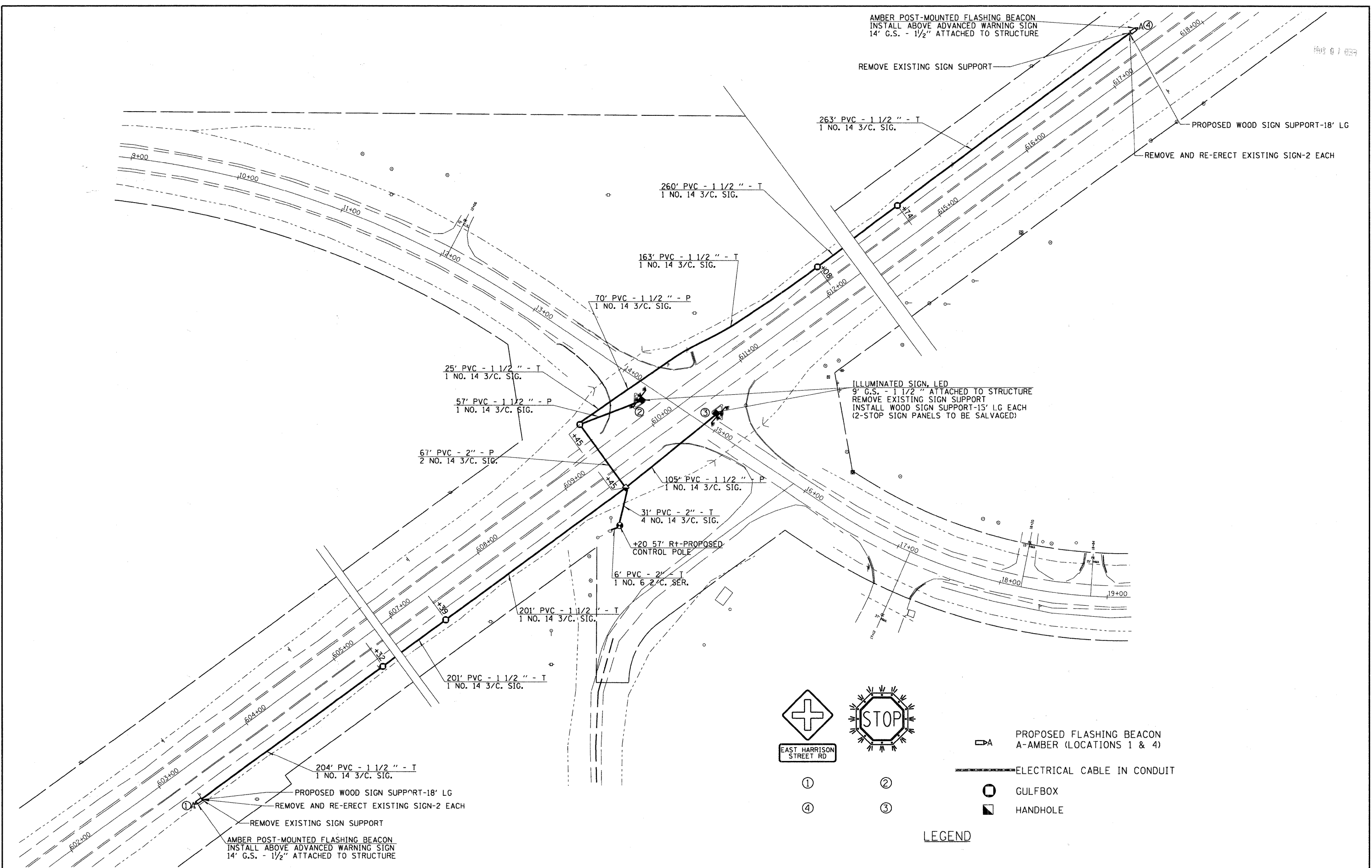
LOCATION #1 AND LOCATION #4

STATE OF ILLINOIS
DEPARTMENT OF TRANSPORTATION

DETAILS

F.A.P. RTE.	SECTION	COUNTY	TOTAL SHEETS	SHEET NO.
91	*	COLES	5	4
CONTRACT NO. 74516				
ILLINOIS FED. AID PROJECT				

SCALE: SHEET NO. OF SHEETS STA. TO STA.



- PROPOSED FLASHING BEACON A-AMBER (LOCATIONS 1 & 4)
- ELECTRICAL CABLE IN CONDUIT
- GULFBOX
- HANDHOLE

LEGEND

FILE NAME =	USER NAME = #USER#	DESIGNED -	REVISED -	STATE OF ILLINOIS DEPARTMENT OF TRANSPORTATION	INTERSECTION OF IL RTE 16 & EAST HARRISON STREET			F.A.P. RTE.	SECTION	COUNTY	TOTAL SHEETS	SHEET NO.
#FILE#		DRAWN -	REVISED -		91		COLES	5	5			
PLOT SCALE = #SCALE#		CHECKED -	REVISED -		SCALE: SHEET NO. OF SHEETS STA. TO STA.			CONTRACT NO. 74516				
PLOT DATE = #DATE#		DATE -	REVISED -		ILLINOIS FED. AID PROJECT							