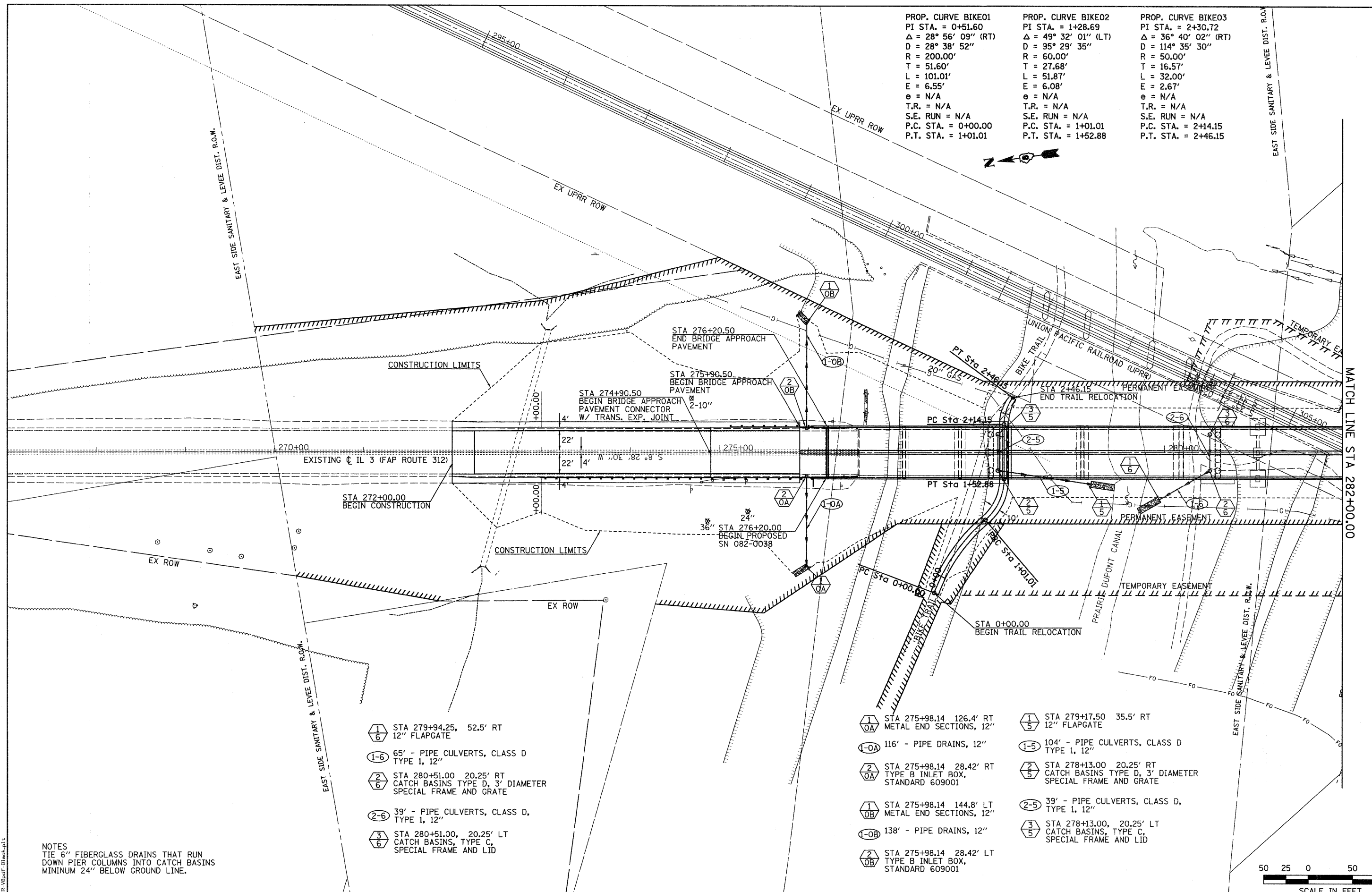


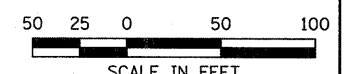
PROP. CURVE BIKE01 PI STA. = 0+51.60 $\Delta = 28^\circ 56' 09''$ (RT) $D = 28^\circ 38' 52''$ $R = 200.00'$ $T = 51.60'$ $L = 101.01'$ $E = 6.55'$ $\theta = N/A$ $T.R. = N/A$ $S.E. RUN = N/A$ $P.C. STA. = 0+00.00$ $P.T. STA. = 1+01.01$	PROP. CURVE BIKE02 PI STA. = 1+28.69 $\Delta = 49^\circ 32' 01''$ (LT) $D = 95^\circ 29' 35''$ $R = 60.00'$ $T = 27.68'$ $L = 51.87'$ $E = 6.08'$ $\theta = N/A$ $T.R. = N/A$ $S.E. RUN = N/A$ $P.C. STA. = 1+01.01$ $P.T. STA. = 1+52.88$	PROP. CURVE BIKE03 PI STA. = 2+30.72 $\Delta = 36^\circ 40' 02''$ (RT) $D = 114^\circ 35' 30''$ $R = 50.00'$ $T = 16.57'$ $L = 32.00'$ $E = 2.67'$ $\theta = N/A$ $T.R. = N/A$ $S.E. RUN = N/A$ $P.C. STA. = 2+14.15$ $P.T. STA. = 2+46.15$
--	--	---



- ①/⑥ STA 279+94.25, 52.5' RT 12" FLAPGATE
- ①-⑥ 65' - PIPE CULVERTS, CLASS D TYPE 1, 12"
- ②/⑥ STA 280+51.00 20.25' RT CATCH BASINS TYPE D, 3' DIAMETER SPECIAL FRAME AND GRATE
- ②-⑥ 39' - PIPE CULVERTS, CLASS D, TYPE 1, 12"
- ③/⑥ STA 280+51.00, 20.25' LT CATCH BASINS, TYPE C, SPECIAL FRAME AND LID

- ①/⑤ STA 275+98.14 126.4' RT METAL END SECTIONS, 12"
- ①-⑤ 116' - PIPE DRAINS, 12"
- ②/⑤ STA 275+98.14 28.42' RT TYPE B INLET BOX, STANDARD 609001
- ①/⑤ STA 275+98.14 144.8' LT METAL END SECTIONS, 12"
- ①-⑤ 138' - PIPE DRAINS, 12"
- ②/⑤ STA 275+98.14 28.42' LT TYPE B INLET BOX, STANDARD 609001
- ①/⑤ STA 279+17.50 35.5' RT 12" FLAPGATE
- ①-⑤ 104' - PIPE CULVERTS, CLASS D TYPE 1, 12"
- ②/⑤ STA 278+13.00 20.25' RT CATCH BASINS TYPE D, 3' DIAMETER SPECIAL FRAME AND GRATE
- ②-⑤ 39' - PIPE CULVERTS, CLASS D, TYPE 1, 12"
- ③/⑤ STA 278+13.00, 20.25' LT CATCH BASINS, TYPE C, SPECIAL FRAME AND LID

NOTES
TIE 6" FIBERGLASS DRAINS THAT RUN DOWN PIER COLUMNS INTO CATCH BASINS MINIMUM 24" BELOW GROUND LINE.



LAST SAVED = 8/3/2010 8:03 AM
 USER = TR-1094-f-Bjorkhult

FILE NAME =	USER NAME = bersteichmann	DESIGNED -	REVISED -	STATE OF ILLINOIS DEPARTMENT OF TRANSPORTATION		IL 3 PLAN	F.A.P. RTE. = 312	SECTION = 64-1VBR	COUNTY = ST. CLAIR	TOTAL SHEETS = 259	SHEET NO. = 18
DRAWN -	REVISED -	SCALE: 1" = 50'	SHEET NO. 1 OF 2 SHEETS				STA. 268+00.00 TO STA. 282+00.00	CONTRACT NO. 76882			
CHECKED -	REVISED -	FED. ROAD DIST. NO. [ILLINOIS] FED. AID PROJECT									
DATE -	REVISED -										