

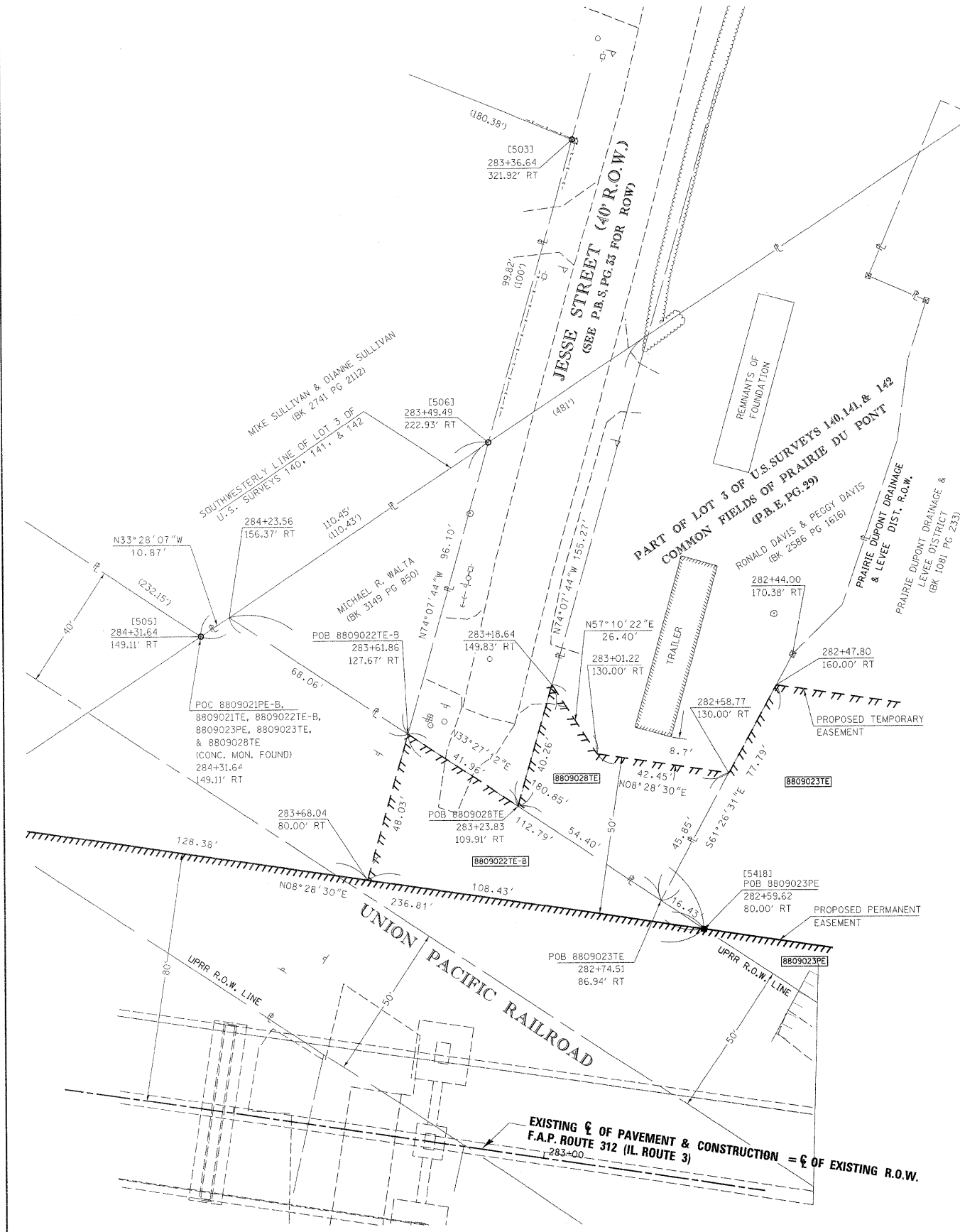
PART OF THE PRAIRIE DU PONT COMMONFIELDS AND PART OF THE SW 1/4 OF SECTION 10, T1N, R10W, OF THE 3RD PM, ST. CLAIR COUNTY, ILLINOIS

SEE BASIS OF COORDINATES AND BEARINGS STATEMENT ON SHEET 2

COORDINATES AND BEARINGS SHOWN HEREON ARE BASED ON SURVEY CONTROL DATA AS PROVIDED BY THE ILLINOIS DEPARTMENT OF TRANSPORTATION.

POINT# / DESC.	I.D.O.T. PROVIDED CONTROL & ALIGNMENT			NORTH	EAST
	STATION	OFFSET			
1				686,104.5563	286,513.0886
2				686,172.8147	287,451.5398
3	279+96.40	204.15' RT		685,053.9153	288,598.4841
4	278+50.43	55.15' LT		685,160.0815	288,876.4597
5	280+58.02	193.09' LT		684,934.4251	288,982.2965
6	279+04.12	263.24' LT		685,076.3062	289,074.3649
7				685,113.8403	290,014.5374
8	297+49.29	53.91' LT		683,282.1425	288,595.3871
9	285+78.93	32.97' RT		684,452.5203	288,681.9353
10	275+80.39	33.02' RT		685,440.1671	288,829.0526
11	263+02.50	37.16' LT		686,693.7607	289,086.8057
70	245+00			688,482.0525	289,315.6991
76	303+00			682,745.3883	288,460.8983

SPACE RESERVED FOR RECORDING OFFICER



(PNT #)/DESCRIPTION	STATION	OFFSET	NORTH	EAST
132 IRF-RR ROW	275+29.02	204.89' LT	685,455.9170	289,071.9340
133 IRF-ROW	265+88.87	74.44' LT	686,405.0190	289,081.4710
361 ROW MARKER	282+02.66	345.48' RT	684,870.7400	288,428.2970
362 ROW MARKER	282+17.67	287.41' RT	684,847.3410	288,483.5180
363 ROW MARKER	282+37.01	292.65' RT	684,828.9780	288,475.4810
364 ROW MARKER	282+44	170.38' RT	684,804.0440	288,595.3890
373 ROW MARKER	285+32.53	200.54' LT	684,463.9990	288,919.7410
375 IRF-BENT	283+89.47	184.12' LT	684,607.9170	288,924.5800
376 IRF-BENT	283+94.13	173.47' LT	684,604.8820	288,913.3620
377 IRF	284+10.14	462.24' LT	684,546.4870	289,196.6190
413 IRF	284+72.95	518.53' LT	684,476.0690	289,243.0340
416 IRF	276+57.97	165.27' RT	685,382.9300	288,666.8130
422 IRF W/ CAP NE CORNER SW 1/4, SECT 10			686,024.9160	289,813.7700
505 CONC. MON.	284+31.64	149.11' RT	684,615.3200	288,588.7790
506 CONC. MON.	283+49.49	222.93' RT	684,707.4520	288,527.8710
5186 IRF	287+59.74	199.43' LT	684,239.4361	288,885.1552
5216 EX. RR ROW	285+04.40	83.71' RT	684,533.7200	288,642.7349
5217 EX. ROW IL 3	265+85.78	75.00' RT	686,430.1009	288,934.1167
5219 EX. ROW IL 3	265+88.87	75.00' RT	686,404.9367	289,082.0232
5226 EX. ROW IL 3	273+21.25	547.72' RT	685,772.3327	288,358.1685
5229 EX. ROW IL 3	273+70.09	165.83' RT	685,667.7395	288,728.6887
5232 NE CORNER LOT 2 OF SW 1/4	270+33.77	192.20' RT	686,004.2779	288,752.1706
5233 SE CORNER LOT 14 OF SW 1/4	270+02.30	5.92' RT	686,007.9500	288,941.0600
5230 EX ROW/PE	271+85.58	166.91' RT	685,850.4006	288,754.8144

(PNT #)/DESCRIPTION	STATION	OFFSET	NORTH	EAST
5407 PE	269+77.65	140.00' LT	686,010.8264	289,089.0158
5408 PE	273+00	170.00' LT	685,687.5739	289,071.1803
5409 PE	275+00	218.71' LT	685,482.5796	289,089.8791
5410 PE	277+97.75	80.00' LT	685,208.5226	288,908.8048
5411 PE	278+51.91	80.00' LT	685,154.9554	288,900.8229
5412 PE	279+16.16	80.00' LT	685,091.4096	288,891.3542
5413 PE	281+52.97	80.00' LT	684,857.1835	288,856.4530
5414 PE	283+31.60	80.00' LT	684,680.5380	288,830.1316
5415 PE	285+75	190.00' LT	684,423.5493	288,903.0531
5416 PE	287+15	185.00' LT	684,285.8150	288,877.4745
5417 PE	284+96.43	80.00' RT	684,541.0549	288,647.5812
5418 PE	282+59.62	80.00' RT	684,775.2810	288,682.4825
5419 PE	281+11.28	80.00' RT	684,922.0011	288,704.3447
5420 PE	277+00	80.00' RT	685,328.7868	288,764.9585
5421 PE	275+50	180.00' RT	685,491.8867	288,688.1574
5422 PE	274+28.14	170.00' RT	685,610.9469	288,716.0085
5423 PE	270+24.84	139.33' RT	686,005.3202	288,805.7856
5424 PE	278+20	80.00' RT	685,210.0972	288,747.2729
5425 PE	277+60	170.00' RT	685,282.7061	288,667.0985
5426 PE	277+20	160.00' RT	685,320.7955	288,682.8845
5427 PE	277+50	80.00' RT	685,279.3328	288,757.5895
5428 PE	288+32.07	266.17' LT	684,158.0598	288,940.5023
5429 PE	288+60	235.30' LT	684,134.8971	288,906.4464
5178 PE	284+57.55	178.54' LT	684,541.4112	288,909.0278

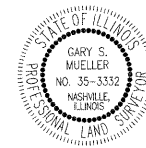
(PNT #)/DESCRIPTION	STATION	OFFSET	NORTH	EAST
5466 PE			686,897.9774	286,947.3960
5467 PE			686,871.9646	286,942.9095
5468 PE			686,879.2456	286,986.7854
5469 PE			686,863.0194	286,974.3366
5470 PE			686,829.9625	287,002.5129
5471 PE			686,842.9363	287,017.7340
5472 PE			686,692.4515	287,093.2955
5473 PE			686,701.3509	287,111.2064
5474 PE			686,512.7610	287,182.5783
5475 PE			686,523.3320	287,199.6587
5476 PE			686,334.8344	287,317.0733
5477 PE			686,347.1609	287,332.8267
5478 PE			686,206.0708	287,421.3379
5479 PE			686,219.0792	287,436.5391
5480 PE			686,042.8198	287,568.9095
5481 PE			686,056.5249	287,583.4810
5482 PE			685,848.9156	287,786.6289
5483 PE			685,834.9279	287,772.3340
5484 PE			685,734.9645	287,949.1846
5485 PE			685,716.7564	287,940.9103
5486 PE			685,570.3739	288,263.0337
5487 PE			685,588.5820	288,271.3080
5488 PE			685,526.2818	288,338.7376
5489 PE			685,542.4628	288,350.4925
5490 PE			685,401.6684	288,544.3009
5491 PE			685,385.2396	288,532.8871
5492 PE	277+29.17	162.29' RT	685,312.0612	288,679.2646
5493 PE	277+48.94	167.24' RT	685,293.2348	288,671.4621
5514 PE			686,672.4144	287,125.5841
5515 PE			686,631.0575	287,123.8003
5516 PE			686,852.6018	236,983.2161
5517 PE			686,880.3734	286,984.4139

STATE OF ILLINOIS)
) SS
 COUNTY OF WASHINGTON)

I, GARY S. MUELLER, AN ILLINOIS PROFESSIONAL LAND SURVEYOR, CERTIFY THAT I HAVE SURVEYED THE PLAT OF HIGHWAY SHOWN HEREON AND THAT THIS PROFESSIONAL SERVICE CONFORMS TO THE CURRENT ILLINOIS MINIMUM STANDARDS FOR A BOUNDARY SURVEY FOR THE PROPOSED PARCEL(S) AND EASEMENTS TO BE ACQUIRED BY THE STATE OF ILLINOIS, DEPARTMENT OF TRANSPORTATION, SHOWN HEREON.

DATED 5/25/2010

GARY S. MUELLER, PLS NO. 3332
 LICENSE EXPIRATION DATE: 11/30/2010



ASSOCIATED PROFESSIONALS, INC.

17625 Mockingbird Road, P.O. Box 311
 Nashville, Illinois 62263
 Ph. 618-478-9000 Fax 618-478-9001
 web: www.apisurvey.com
 IDPR Design Firm License No. 184-001303

ILLINOIS DEPARTMENT OF TRANSPORTATION
PLAT OF HIGHWAYS
 FAP ROUTE 312 (IL RTE 3)
 SECTION 64-1VBR
 ST. CLAIR COUNTY
 JOB NO. R-98-009-08

DETAIL SHEET

SCALE: 1" = 20'

SHEET 5 OF

ILLINOIS DEPARTMENT OF TRANSPORTATION
 DIVISION OF HIGHWAYS/REGION 5/DISTRICT 8
 1102 EASTPORT PLAZA DRIVE
 COLLINGSVILLE, ILLINOIS 62231-6198

F.A.P. RTE.	SECTION	COUNTY	TOTAL SHEETS	SHEET NO.
312	64-1VBR	ST. CLAIR	259	40

CONTRACT NO. 76882

FED. ROAD DIST. NO. 8 | ILLINOIS FED. AID PROJECT