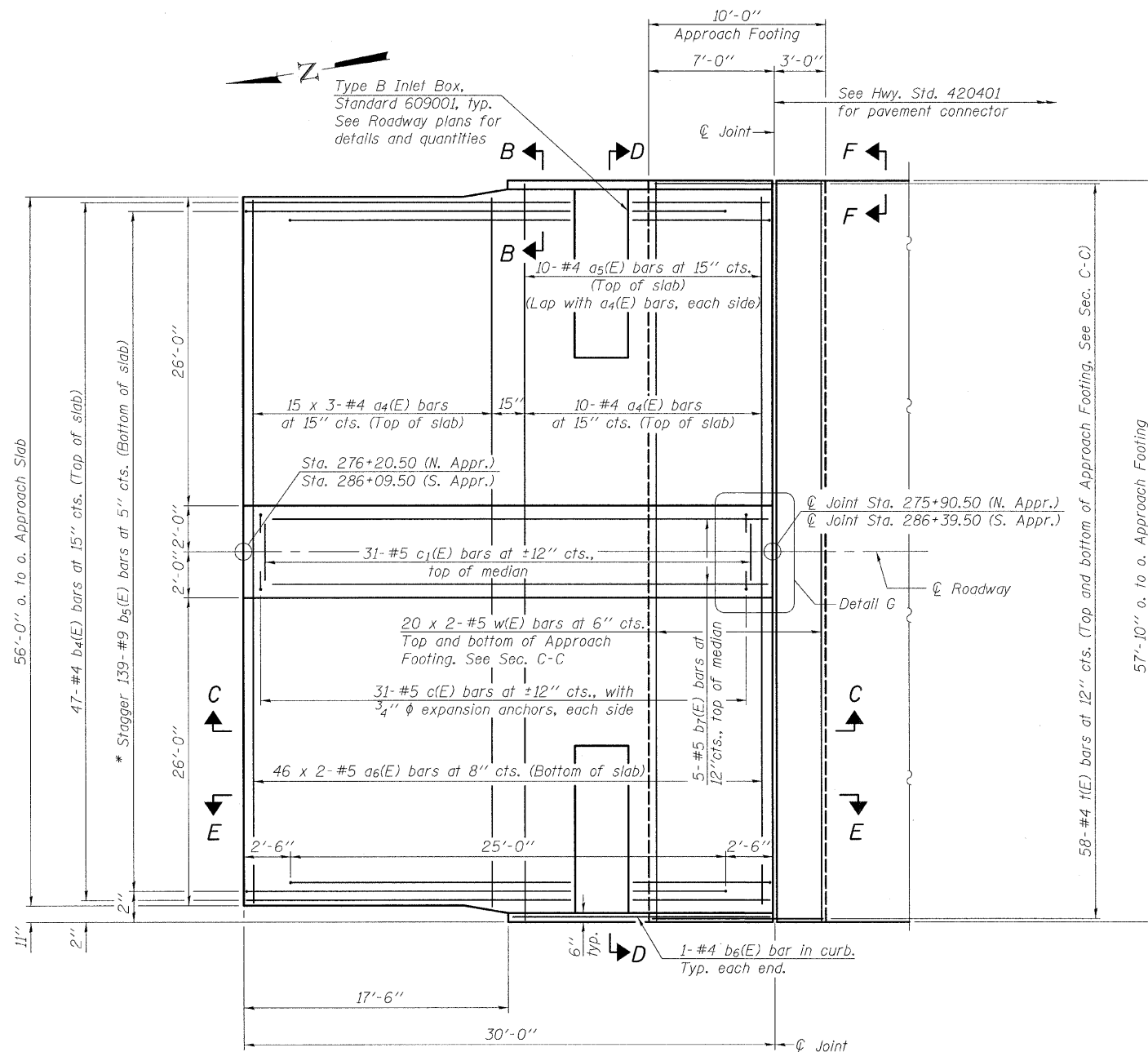


STATE OF ILLINOIS
DEPARTMENT OF TRANSPORTATION

Notes:
See sheet 20 of 48 for Sections C-C & D-D and View E-E.
a₄(E) and a₅(E) bar spacings measured along \varnothing Rdwy.
Bars indicated thus 15 x 3-#4 etc. indicates
15 lines of bars with 3 lengths per line.



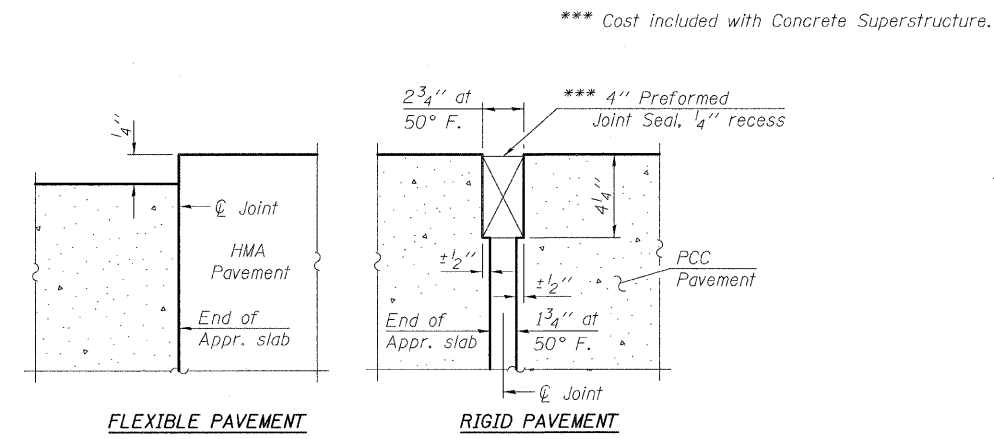
PLAN

*Tilt #9 b₅(E) bars as required to maintain clearance.

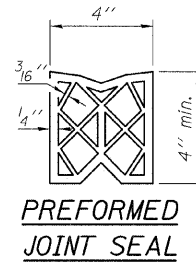
South Approach shown, North Approach similar, except as shown.

MINIMUM BAR LAP

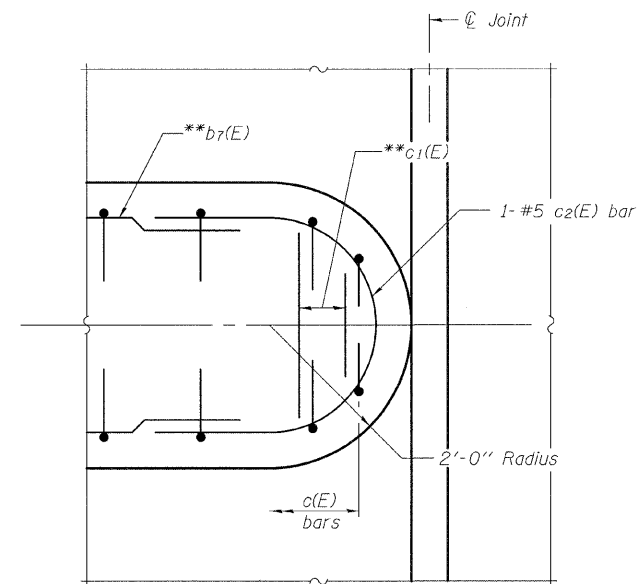
#4 bar = 2'-11"
#5 bar = 3'-3"



DETAIL A

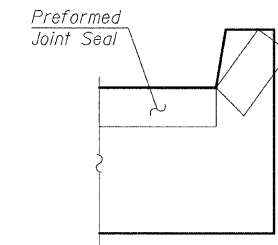


PREFORMED JOINT SEAL



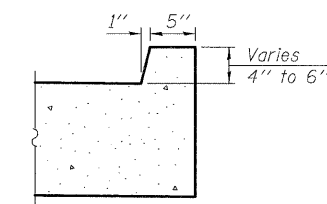
DETAIL G

(N. Appr. only)
**Cut bars in field to fit.

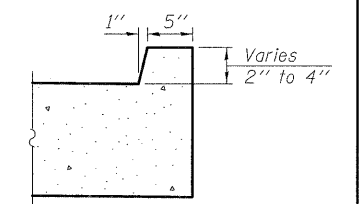


VIEW F-F

Angle Preformed Joint Seal at 45° at curbs when req'd for drainage.



VIEW B-B
(S. Appr.)



VIEW B-B
(N. Appr.)

| | |
|----------|-----|
| DESIGNED | JJD |
| CHECKED | EML |
| DRAWN | AJF |
| CHECKED | JJD |

BRIDGE APPROACH SLAB
STRUCTURE NO. 082-0038

| | | | | | |
|---------------------------|--------------------|--------------------|---------------------|---------------------------|-----------------|
| SHEET NO. 19 48 SHEETS | F.A.P. RTE. 312 | SECTION 64-1VBR | COUNTY ST. CLAIR | TOTAL SHEETS 259 | SHEET NO. 71 |
| | CONTRACT NO. 76882 | | | ILLINOIS FED. AID PROJECT | |

HORNER & SHIFRIN, INC.
ENGINEERS