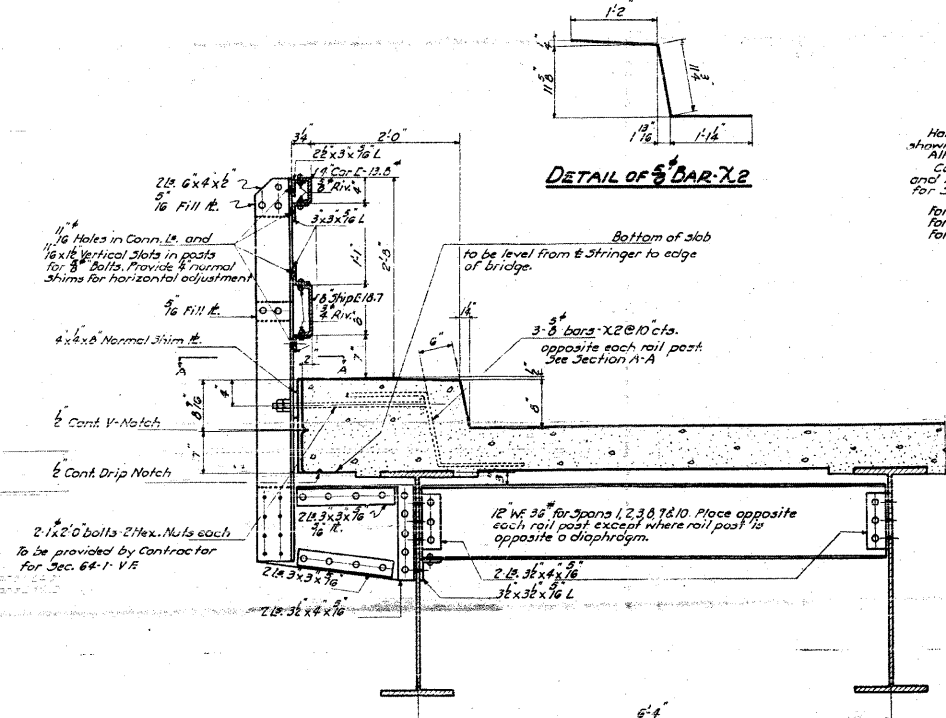


STATE OF ILLINOIS
DEPARTMENT OF PUBLIC WORKS & BUILDINGS
DIVISION OF HIGHWAYS

SECTION	NO.	TOTAL SHEETS	SHEET NO.	SHEET NO.
64-1VBR	16	16	16	16
ST. CLAIR	16	16	16	16

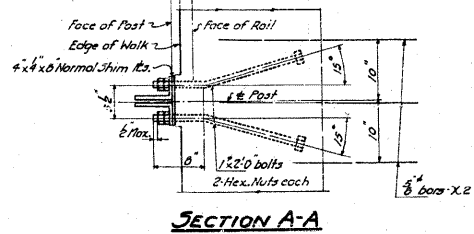
SHEET NO. 14
30 SHEETS



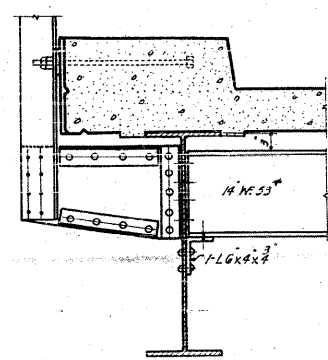
TYPICAL HANDRAIL POST AND CONNECTION FOR SPANS 1, 2, 3, 8, 9 & 10

For Spans 4, 5 & 6 Handrail Post the same. See Sheet 6 for details of connection.

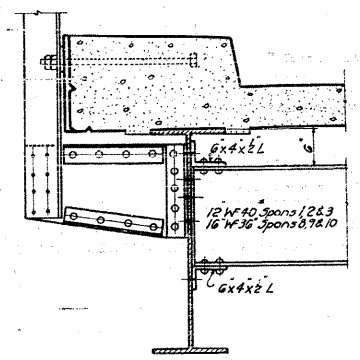
NOTE
Handrail Posts shall be fabricated so that the rail dimensions shown can be maintained at all posts.
All Posts shall be truly vertical.
Contractor for Sec. 64-1V.E. shall align, assemble and rivet Handrail Posts and brackets. Contractor for Sec. 64-1V.D. shall secure posts to anchor bolts.
For location and spacing of Handrail Posts, see Sheets 3 & 2.12.
For detail of end diaphragm of Pier 7, see Sheet 16.
For detail of end diaphragm of Pier 3, see Sheet 15.



SECTION A-A

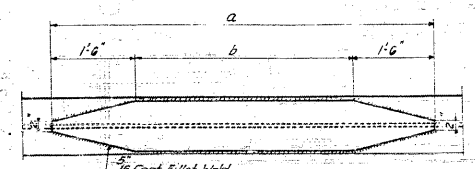


CONNECTION AT END DIAPHRAGMS SPAN 3 AT PIER 3 AND SPAN 8 AT PIER 7



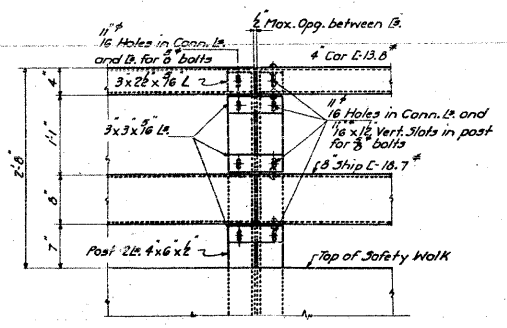
DETAIL A CONNECTION AT INTERMEDIATE DIAPHRAGMS

All Points noted Detail A on Plans For Spans 1, 2, 3, 8, 9 & 10

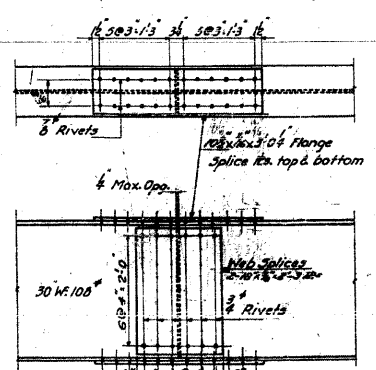


Pier No.	Width	Thickness	a	b
1, 2, 3	7'6"	3/8"	13'9"	10'9"
8, 9, 10	11'	3/8"	17'6"	14'6"

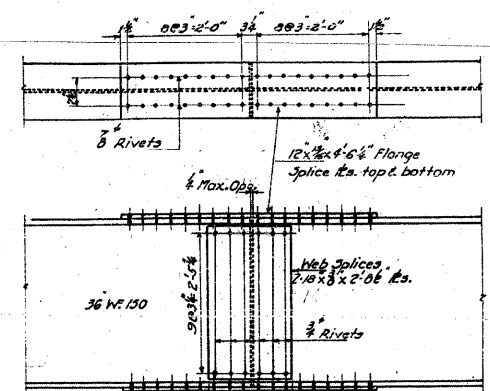
DETAIL OF COVER PLATES
Spans 1, 2, 3, 8, 9 & 10



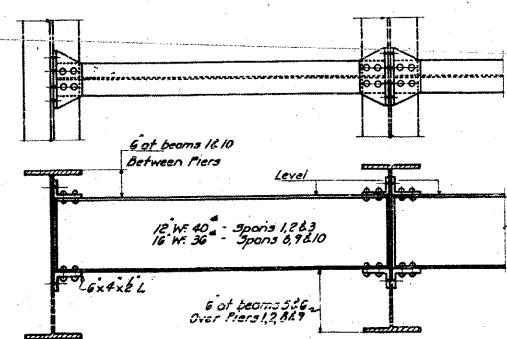
ROADWAY FACE ELEVATION OF RAIL SHOWING SPlicing OF CHANNELS



BEAM SPLICES FOR SPANS 2 & 3



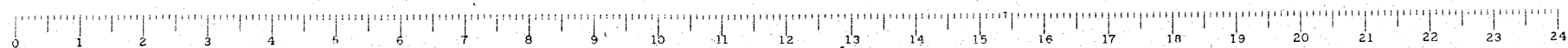
BEAM SPLICES FOR SPANS 8, 9 & 10



DETAILS OF INTERMEDIATE DIAPHRAGMS
For I-beam Spans

STANDARD	COMPUTED <i>W. J. Wiley</i>	EXAMINED <i>8-10 1954</i>
	CHECKED <i>W. V. Sommer</i>	ENGINEER OF BRIDGE AND HIGHWAY STRUCTURES
	DRAWN <i>W. J. Wiley</i>	PASSED <i>[Signature]</i>
	CHECKED <i>W. V. Sommer</i>	APPROVED <i>[Signature]</i>
SPECIAL	ASSEMBLED	
	CHECKED	

DECK DETAILS
GRADE SEPARATION
MISSOURI PACIFIC R.R.
NORTH OF DUPO
E.A. ROUTE 4 - SEC. 64-1V.D.E.1
ST. CLAIR COUNTY



FOR INFORMATION ONLY

FILE NAME = ...\\114-0876882-01st-bridge-plans-14.dgn	USER NAME = CFC...	DESIGNED -	REVISED -	STATE OF ILLINOIS DEPARTMENT OF TRANSPORTATION	SN 082-0030 PLANS (ORIGINAL PLANS)	F.A.P. RTE. 312	SECTION 64-1VBR	COUNTY ST. CLAIR	TOTAL SHEETS 259	SHEET NO. 114	CONTRACT NO. 76882
PLOT SCALE = 40.000000' / IN.	PLOT DATE = 8/5/2010	DRAWN -	REVISED -	SCALE:	SHEET NO. OF SHEETS STA. TO STA.	ILLINOIS FED. AID PROJECT					

Coombe-Bloxdorf P.C.
- CIVIL ENGINEERS -
- STRUCTURAL ENGINEERS -
- LAND SURVEYERS -
Design Firm License No. 184-002703