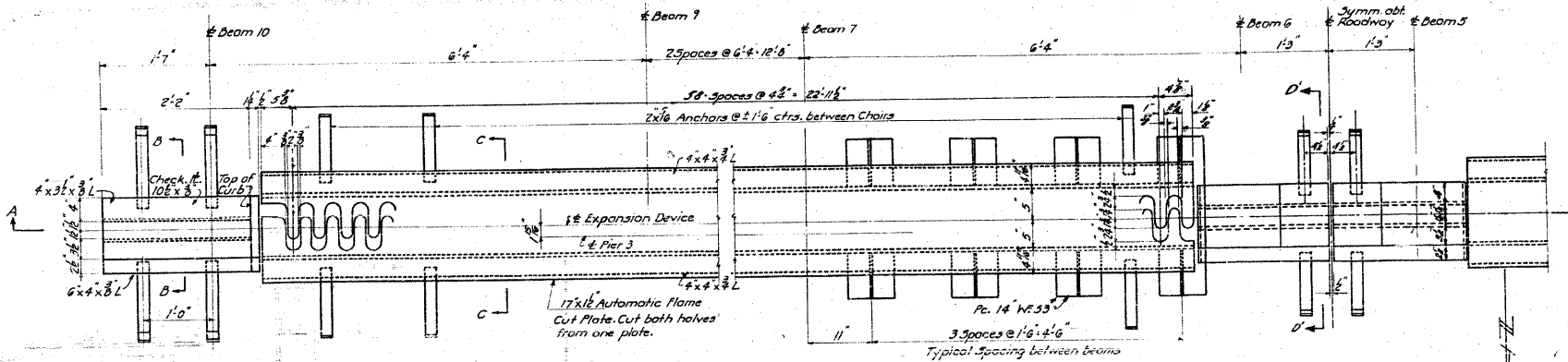
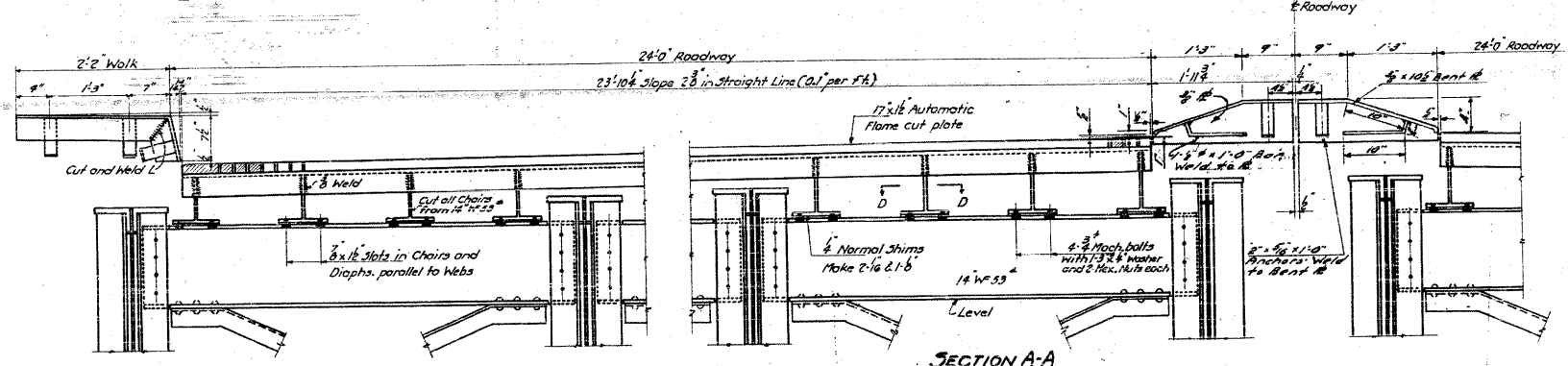


STATE OF ILLINOIS
DEPARTMENT OF PUBLIC WORKS & BUILDINGS
DIVISION OF HIGHWAYS

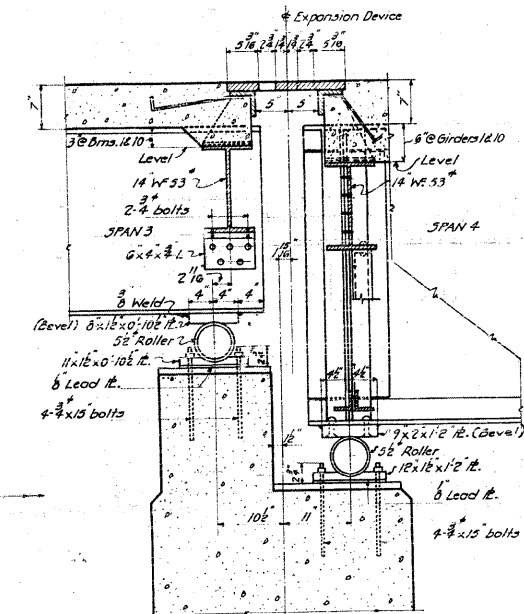
ROAD DIST. NO.	SECTION	COUNTY	TOTAL SHEETS	SHEET NO.
64-IVBR	St. Clair	St. Clair	259	115
30 SHEETS				



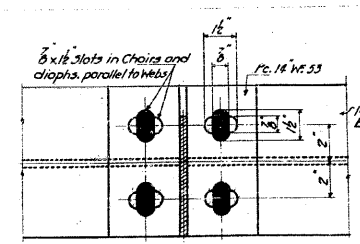
PLAN OF EXPANSION DEVICE-PIER 3
Openings between expansion plates are shown for a normal temperature of 50°F.



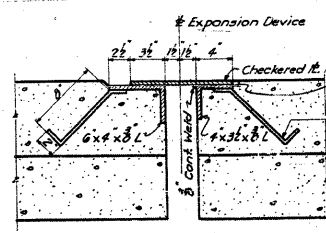
SECTION A-A



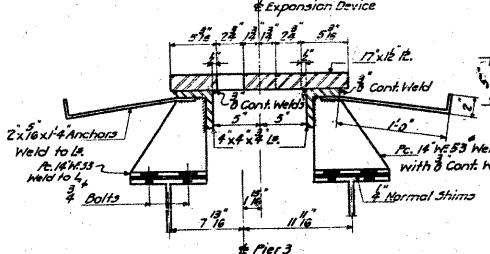
SECTION AT PIER 3



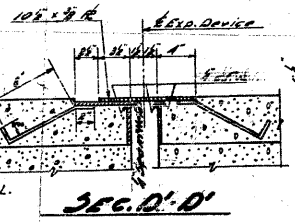
SECTION D-D



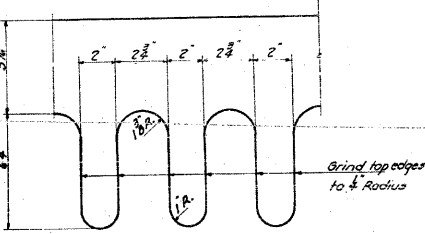
SECTION B-B



SECTION C-C



SEC. D'-D'

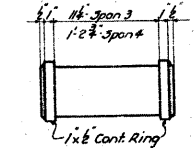


DETAIL OF EXPANSION PLATE

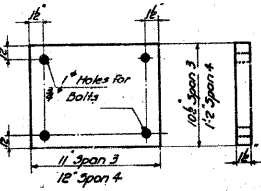
Expansion devices shall be inspected in the shop in their assembled position before painting. Estimated weight of expansion device of Pier 3 included in Bill of Material on Sheet 2 as Structural Steel Carbon 4940 lbs.

COMPUTED	W. F. Wible
CHECKED	W. M. Ziemer
DRAWN	W. J. W.
CHECKED	W. M. Z.
ASSEMBLED	
CHECKED	

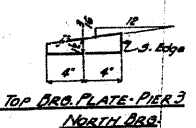
EXAMINED	8-10 1954
DRAWN	W. E. Hanson
PASSED	
APPROVED	R. R. B...



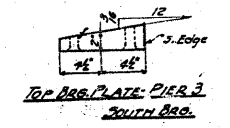
DETAILS OF ROLLERS-PIER 3



BOTTOM BRG. PLATES-PIER 3



TOP BRG. PLATE-PIER 3 NORTH BRG.



TOP BRG. PLATE-PIER 3 SOUTH BRG.

EXPANSION DEVICE-PIER 3
GRADE SEPARATION
MISSOURI PACIFIC R.R.
NORTH OF DUPO
E.A. ROUTE 4 - SEC. 64 - N.W.E. 1/4
ST. CLAIR COUNTY



FOR INFORMATION ONLY

FILE NAME =	USER NAME = CFC...	DESIGNED -	REVISED -
...\\115-0876882-exist-bridge-plans-15.dgn		DRAWN -	REVISED -
		CHECKED -	REVISED -
		DATE - / /	REVISED -

STATE OF ILLINOIS
DEPARTMENT OF TRANSPORTATION

SN 082-0030 PLANS
(ORIGINAL PLANS)

SCALE:	SHEET NO.	OF SHEETS	STA.	TO STA.
--------	-----------	-----------	------	---------

CB Coombe-Bloxdorf P.C.
- CIVIL ENGINEERS -
- STRUCTURAL ENGINEERS -
- LAND SURVEYORS -
Design Firm License No. 184-002703

F.A.P. RTE.	SECTION	COUNTY	TOTAL SHEETS	SHEET NO.
312	64-IVBR	ST. CLAIR	259	115
				CONTRACT NO. 76882
ILLINOIS FED. AID PROJECT				